

Plat Name: Wheaton Forest
Plat #: 220130790

Location: Located on the east side of Georgia Avenue (MD 97), 350 feet south of Reddie Drive.

Master Plan: Wheaton CBD Sector Plan

Plat Details: CR zone; 1 lot
Community Water, Community Sewer

Owner: ML Wheaton LLC

The subdivision plat has been reviewed by M-NCPPC staff as documented on the attached Plat Review Checklist. Staff has determined that the plat complies with Preliminary Plan No. 120120230 (MCPB Resolution No. 12-105) and with Site Plan No. 820120170 (Certified Site Plan dated January 8, 2013), as approved by the Board, and that any minor modifications reflected on the plat do not alter the intent of the Board's previous approval of the aforesaid plans.

RECORD PLAT REVIEW SHEET

Plat Name: Wheaton Forest Plat Number: 220130790
 Plan Name: 11141 Georgia Avenue Plan Number: 120120230
 Plat Submission Date: 11-7-2012
 DRD Plat Reviewer: S. Smith Checked: SSS Date 2/5/13
 DRD Prelim Plan Reviewer: P. Butler

Background Review:

Signed Preliminary Plan - Date 10/31/12 Checked: Initial SSS Date 1-7-2013
 Planning Board Resolution No. 12-165 Resolution Mailing Date 9-26-2012
 Site Plan Required? Yes No Verified By: SSS (initial)
 Site Plan Name: 11141 Georgia Ave Site Plan Number: 820120170
 Site Plan Signature Set - Date 1-8-2013 Checked: Initial SSS Date 2-5-2013
 Planning Board Resolution No. 12-106
 Site Plan Reviewer Check: Initial SSS Date 2-5-2013

Review Items: Lot # & Layout Lot Area Zoning Bearings & Distances
 Coordinates Plan # Road/Alley Widths OK Easements N/A Open Space N/A
 Non-standard BRLs N/A Adjoining Land Vicinity Map Septic/Wells N/A
 TDR note Child Lot notes N/A Surveyor Cert Owner Cert Tax Map

Agency Reviews	Reviewer	Date Sent	Due Date	Date Rec'd	Comments
Environment	Evelyn Gibson	1-9-12	11-23-12	11-26-2012	NO REVISIONS
Research	Bobby Fleury			11-16-2012	OK
SHA	Corren Giles				
PEPCO					
Parks	Doug Powell				
DRD	Keiona Clark				

Final DRD Review:

Consultant Notified (Final Mark-up): Initial SSS Date 2/5/13
 Final Mylar & DXF/DWG Received: Initial SSS Date 2-7-2013
 Final Mylar Review Complete: Initial SSS Date 2-12-2013

Board Approval of Plat:

Plat Agenda: Initial SSS Date 2-21-2013

Planning Board Approval: _____

Chairman's Signature: _____

MCDPS Approval of Plat:

Consultant Pick-up for DPS Signature: _____

Final Mylar for Reproduction Rec'd: _____

Plat Reproduction:

Addressing: _____

File Card Update: _____

Final Zoning Book Check: _____

Update Address Books with Plat #: _____

Update Plat Books for Rest Division: _____

Complete Reproduction: _____

Notify Consultant to Seal Plats: _____

Surveyor's Seal Complete: _____

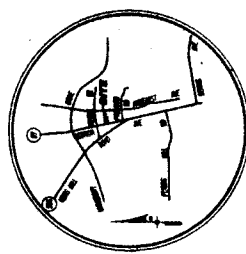
Sent to Courthouse for Recordation: _____

Recordation Info Entered into Hansen: _____

No. _____

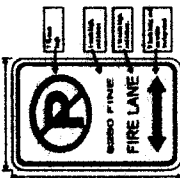
LEGEND

- PROPERTY LINE
- ADJOINING BOUNDARY
- PREVIOUS LOT LINES
- REVISION LINE
- EXISTING BUILDING
- BUILDING TO BE MODIFIED
- BUILDING OVERLAP



PROPERTY MAP
SCALE 1" = 200'

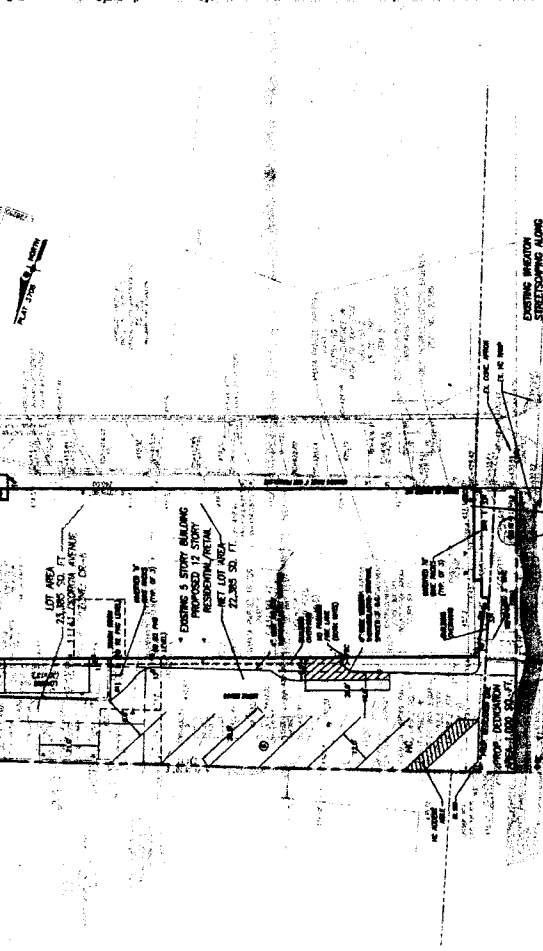
1. TO BE DEMOLISHED
2. TO BE DEMOLISHED
3. TO BE DEMOLISHED
4. TO BE DEMOLISHED
5. TO BE DEMOLISHED
6. TO BE DEMOLISHED
7. TO BE DEMOLISHED
8. TO BE DEMOLISHED
9. TO BE DEMOLISHED
10. TO BE DEMOLISHED
11. TO BE DEMOLISHED
12. TO BE DEMOLISHED
13. TO BE DEMOLISHED
14. TO BE DEMOLISHED
15. TO BE DEMOLISHED
16. TO BE DEMOLISHED
17. TO BE DEMOLISHED
18. TO BE DEMOLISHED
19. TO BE DEMOLISHED
20. TO BE DEMOLISHED



RECREATION AMENITY ANALYSIS

11141 Georgia Avenue
Montgomery County, Maryland

Category	Value	Weight	Points
DEMAND POINTS			
1. Population (2010 Census)	24	0.5	12
2. Distance to Nearest Public Facility	1.5	1.0	1.5
3. Distance to Nearest Public Facility	1.5	1.0	1.5
4. Distance to Nearest Public Facility	1.5	1.0	1.5
5. Distance to Nearest Public Facility	1.5	1.0	1.5
6. Distance to Nearest Public Facility	1.5	1.0	1.5
7. Distance to Nearest Public Facility	1.5	1.0	1.5
8. Distance to Nearest Public Facility	1.5	1.0	1.5
9. Distance to Nearest Public Facility	1.5	1.0	1.5
10. Distance to Nearest Public Facility	1.5	1.0	1.5
11. Distance to Nearest Public Facility	1.5	1.0	1.5
12. Distance to Nearest Public Facility	1.5	1.0	1.5
13. Distance to Nearest Public Facility	1.5	1.0	1.5
14. Distance to Nearest Public Facility	1.5	1.0	1.5
15. Distance to Nearest Public Facility	1.5	1.0	1.5
16. Distance to Nearest Public Facility	1.5	1.0	1.5
17. Distance to Nearest Public Facility	1.5	1.0	1.5
18. Distance to Nearest Public Facility	1.5	1.0	1.5
19. Distance to Nearest Public Facility	1.5	1.0	1.5
20. Distance to Nearest Public Facility	1.5	1.0	1.5
TOTAL DEMAND POINTS			108.0
SUPPLY POINTS			
1. Open Space (Minimum Volume: 5000 Sq Ft)	10	1.0	10
2. Open Space (Minimum Volume: 5000 Sq Ft)	10	1.0	10
3. Open Space (Minimum Volume: 5000 Sq Ft)	10	1.0	10
4. Open Space (Minimum Volume: 5000 Sq Ft)	10	1.0	10
5. Open Space (Minimum Volume: 5000 Sq Ft)	10	1.0	10
6. Open Space (Minimum Volume: 5000 Sq Ft)	10	1.0	10
7. Open Space (Minimum Volume: 5000 Sq Ft)	10	1.0	10
8. Open Space (Minimum Volume: 5000 Sq Ft)	10	1.0	10
9. Open Space (Minimum Volume: 5000 Sq Ft)	10	1.0	10
10. Open Space (Minimum Volume: 5000 Sq Ft)	10	1.0	10
11. Open Space (Minimum Volume: 5000 Sq Ft)	10	1.0	10
12. Open Space (Minimum Volume: 5000 Sq Ft)	10	1.0	10
13. Open Space (Minimum Volume: 5000 Sq Ft)	10	1.0	10
14. Open Space (Minimum Volume: 5000 Sq Ft)	10	1.0	10
15. Open Space (Minimum Volume: 5000 Sq Ft)	10	1.0	10
16. Open Space (Minimum Volume: 5000 Sq Ft)	10	1.0	10
17. Open Space (Minimum Volume: 5000 Sq Ft)	10	1.0	10
18. Open Space (Minimum Volume: 5000 Sq Ft)	10	1.0	10
19. Open Space (Minimum Volume: 5000 Sq Ft)	10	1.0	10
20. Open Space (Minimum Volume: 5000 Sq Ft)	10	1.0	10
TOTAL SUPPLY POINTS			200.0



11141 GEORGIA AVENUE
WHEATON, MD 20922

2011-1-20
MONTGOMERY COUNTY
DEPARTMENT OF PERMITS



SCALE 1"=20'

PROJECT INFORMATION
Client: Mr. [Name]
Address: 11141 Georgia Avenue
Project Name: [Name]

DESIGNER INFORMATION
Designer: [Name]
Firm: [Firm Name]

Ronstro Hedges

Montgomery County Planning Department
11141 Georgia Avenue, MD 20922