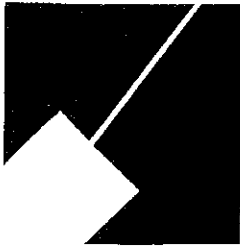


Item #11

M-NCPPC



MONTGOMERY COUNTY DEPARTMENT OF PARK AND PLANNING

THE MARYLAND-NATIONAL CAPITAL
PARK AND PLANNING COMMISSION

8787 Georgia Avenue
Silver Spring, Maryland 20910-3760

M E M O R A N D U M

DATE: October 19, 2001
TO: Montgomery County Planning Board
FROM: A. Malcolm Shaneman
Planning Department
(301) 495-4587
SUBJECT: Informational Maps for Subdivision Items on the
Planning Board's Agenda for October 26, 2001.

Attached are copies of plan drawings for Items #08, #09, #10, #11. These subdivision items are scheduled for Planning Board consideration on October 26, 2001. The items are further identified as follows:

Agenda Item #08 - Preliminary Plan 1-01048
Academy Child Development Center, Inc.

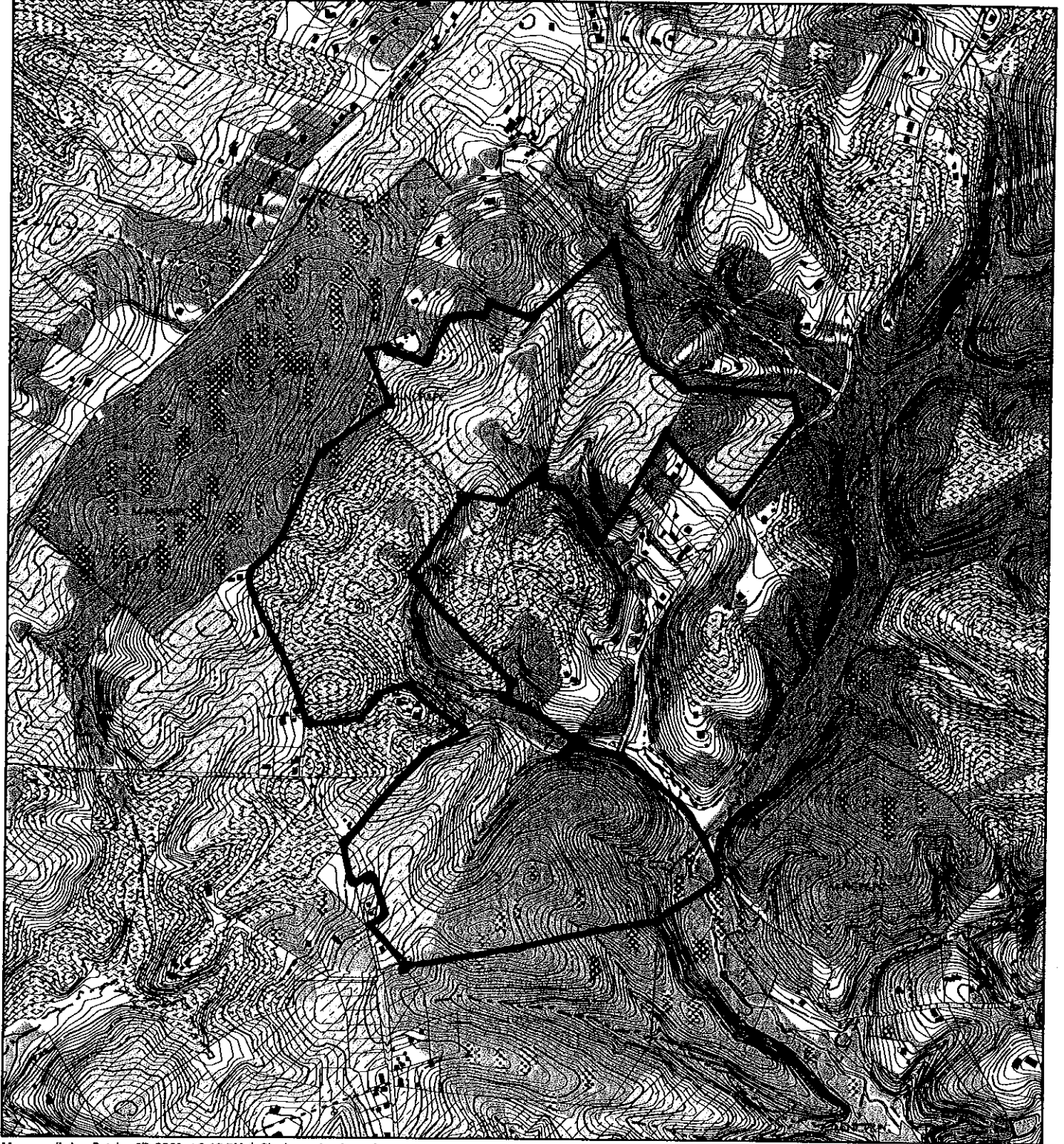
Agenda Item #09 - Preliminary Plan 1-01037
Frazier Property

Agenda Item #10 - Preliminary Plan 1-97044A
New Covenant Fellowship Church

Agenda Item #11 - Preliminary Plan 1-97098A
Thompson Farm

Attachment

VICINITY MAP FOR
THOMPSON FARM (1-97089)



Map compiled on October 17, 2001 at 9:43 PM | Site located on base sheet no - 231NW16

NOTICE

The planimetric, property, and topographic information shown on this map is based on copyrighted Map Products from the Montgomery County Department of Park and Planning of the Maryland-National Capital Park and Planning Commission, and may not be copied or reproduced without written permission from M-NCPPC.

Property lines are compiled by adjusting the property lines to topography created from aerial photography and should not be interpreted as actual field surveys. Planimetric features were compiled from 1:14400 scale aerial photography using stereo photogrammetric methods.

This map is created from a variety of data sources, and may not reflect the most current conditions in any one location and may not be completely accurate or up to date. All map features are approximately within five feet of their true location. This map may not be the same as a map of the same area plotted at an earlier time as the data is continuously updated. Use of this map, other than for general planning purposes is not recommended. - Copyright 1988

Key Map



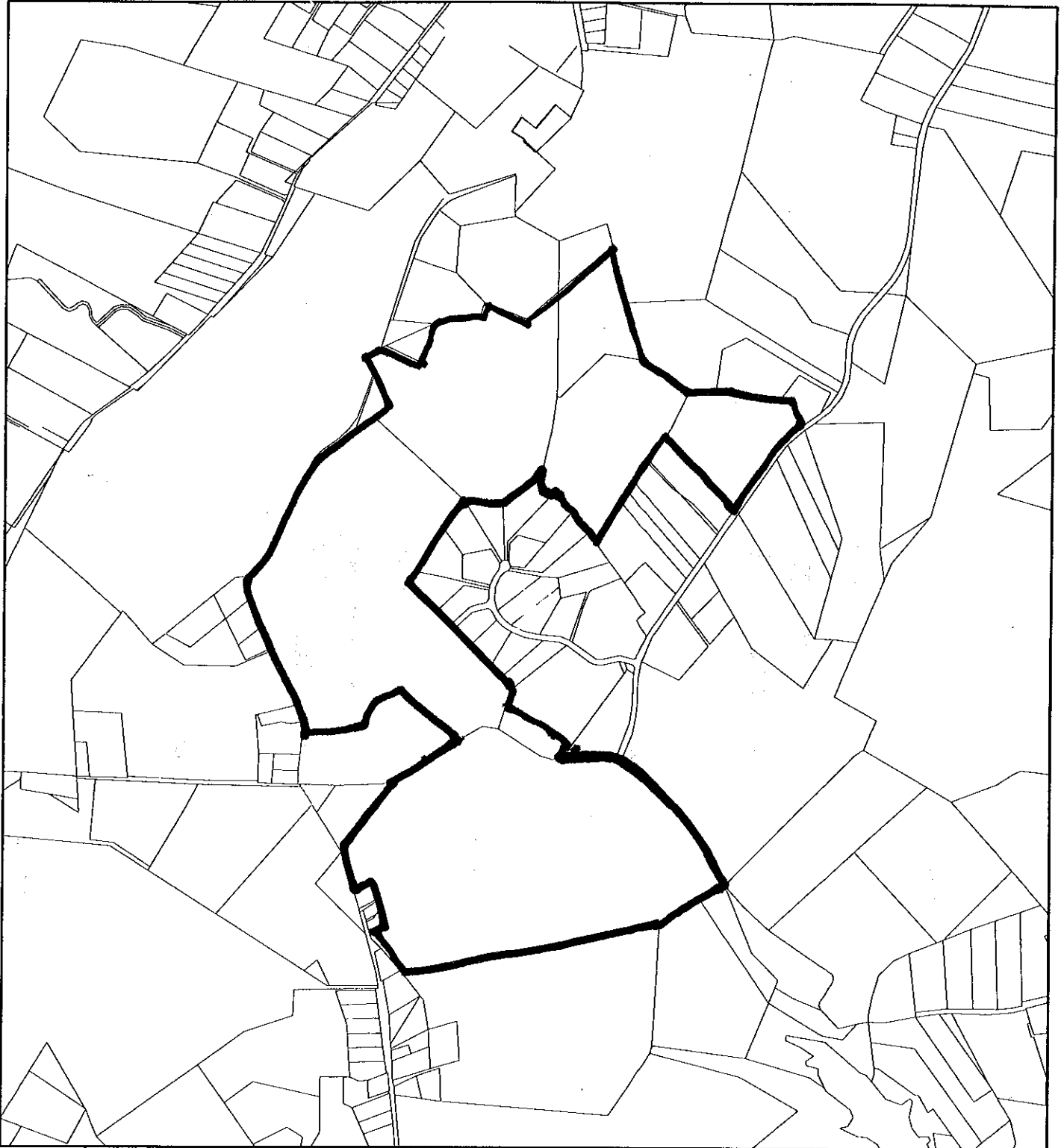
Research & Technology Center



1 : 18000

VICINITY MAP FOR

THOMPSON FARM (1-97089)



Map compiled on October 17, 2001 at 9:13 PM | Site located on base sheet no - 231NW15

NOTICE

The planimetric, property, and topographic information shown on this map is based on copyrighted Map Products from the Montgomery County Department of Park and Planning of the Maryland-National Capital Park and Planning Commission, and may not be copied or reproduced without written permission from M-NCPPC.

Property lines are compiled by adjusting the property lines to topography created from aerial photography and should not be interpreted as actual field surveys. Planimetric features were compiled from 1:14400 scale aerial photography using stereo photogrammetric methods.

This map is created from a variety of data sources, and may not reflect the most current conditions in any one location and may not be completely accurate or up to date. All map features are approximately within five feet of their true location. This map may not be the same as a map of the same area plotted at an earlier time as the data is continuously updated. Use of this map, other than for general planning purposes is not recommended. - Copyright 1998

Key Map



N



Research & Technology Center



1:18000

