



Item #14

M E M O R A N D U M

**DATE:** October 26, 2001  
**TO:** Montgomery County Planning Board  
**FROM:** A. Malcolm Shaneman  
Planning Department  
(301) 495-4587  
**SUBJECT:** Informational Maps for Subdivision Items on the  
Planning Board's Agenda for November 01, 2001.

---

Attached are copies of plan drawings for Items #12, #13, #14, #15. These subdivision items are scheduled for Planning Board consideration on November 01, 2001. The items are further identified as follows:

Agenda Item #12 - Preliminary Plan 1-02004  
Cabin John

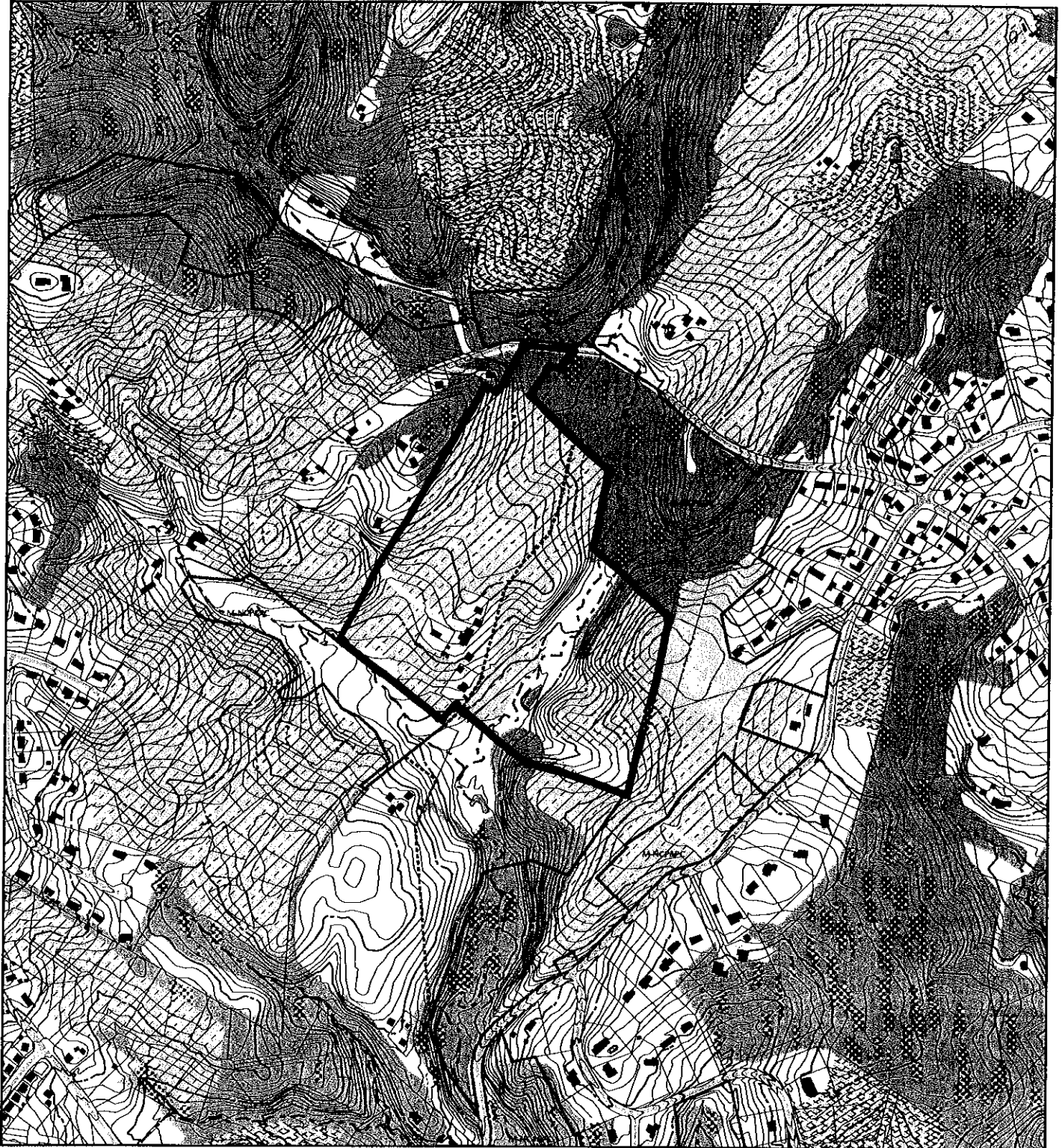
Agenda Item #13 - Preliminary Plan 1-02014  
Camp Property

Agenda Item #14 - Preliminary Plan 1-01082  
Johnson Property

Agenda Item #15 - Preliminary Plan 1-01090  
Burnt Mills

Attachment

VICINITY MAP FOR  
**JOHNSON PROPERTY (1-01082)**



Map compiled on July 06, 2001 at 10:32 AM | Site located on base sheet no - 236NW08

**NOTICE**

The planimetric, property, and topographic information shown on this map is based on copyrighted Map Products from the Montgomery County Department of Park and Planning of the Maryland-National Capital Park and Planning Commission, and may not be copied or reproduced without written permission from M-NCPPC.

Property lines are compiled by adjusting the property lines to topography created from aerial photography and should not be interpreted as actual field surveys. Planimetric features were compiled from 1:14400 scale aerial photography using stereo photogrammetric methods.

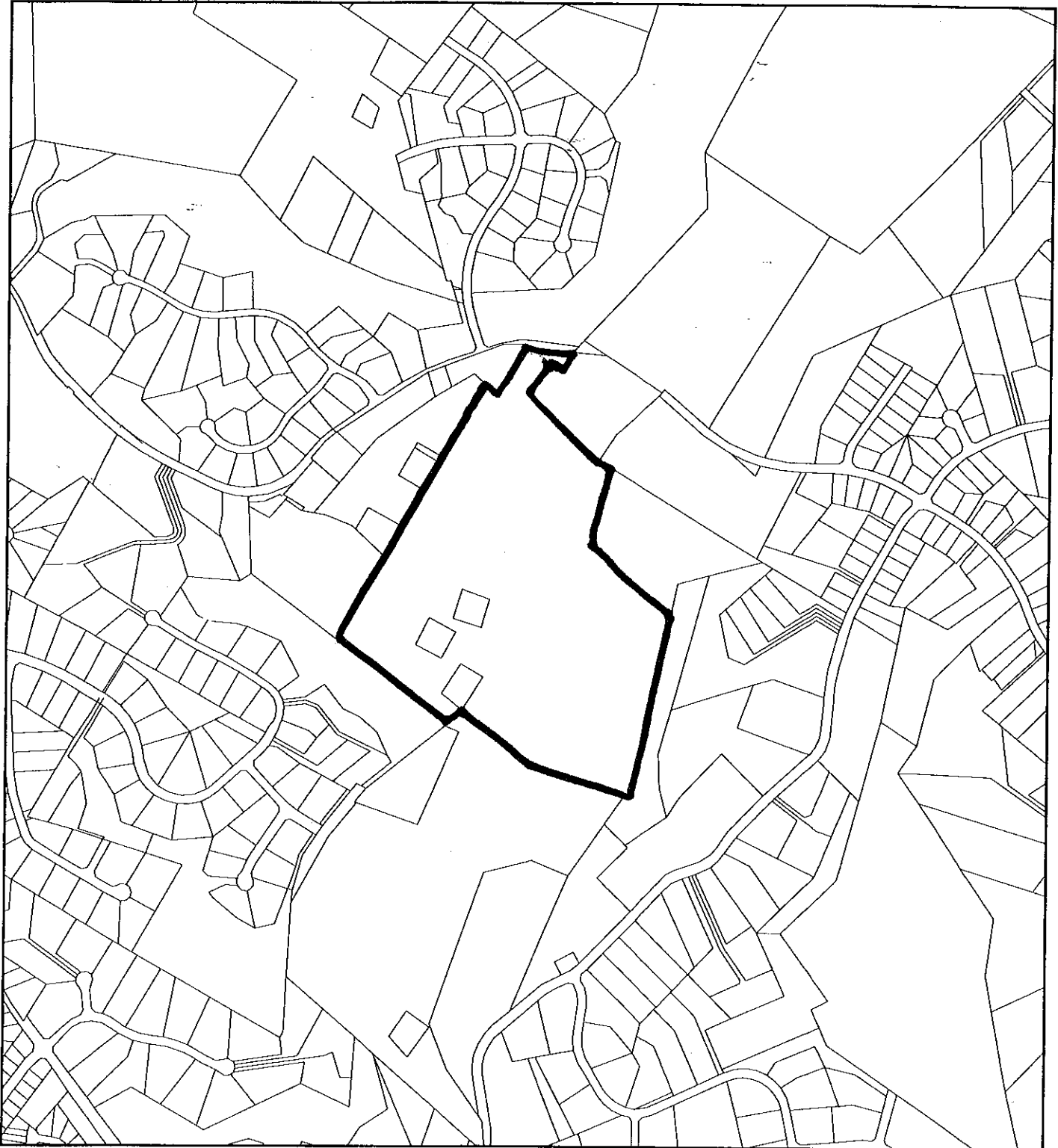
This map is created from a variety of data sources, and may not reflect the most current conditions in any one location and may not be completely accurate or up to date. All map features are approximately within five feet of their true location. This map may not be the same as a map of the same area plotted at an earlier time as the data is continuously updated. Use of this map, other than for general planning purposes is not recommended. - Copyright 1998

Key Map



1 : 12000

VICINITY MAP FOR  
**JOHNSON PROPERTY (1-01082)**



Map compiled on July 06, 2001 at 10:18 AM | Site located on base sheet no - 235NW09

**NOTICE**

The planimetric, property, and topographic information shown on this map is based on copyrighted Map Products from the Montgomery County Department of Park and Planning of the Maryland-National Capital Park and Planning Commission, and may not be copied or reproduced without written permission from M-NCPPC.

Property lines are compiled by adjusting the property lines to topography created from aerial photography and should not be interpreted as actual field surveys. Planimetric features were compiled from 1:14400 scale aerial photography using stereo photogrammetric methods.

This map is created from a variety of data sources, and may not reflect the most current conditions in any one location and may not be completely accurate or up to date. All map features are approximately within five feet of their true location. This map may not be the same as a map of the same area plotted at an earlier time as the data is continuously updated. Use of this map, other than for general planning purposes is not recommended. - Copyright 1998

Key Map



STRAVE DISPOSAL SYSTEM - DESIGN DATE: \_\_\_\_\_

NO.	DESCRIPTION	DATE	BY
1	PRELIMINARY PLAN	5/31/2001	...
2	...	...	...
3	...	...	...
4	...	...	...
5	...	...	...
6	...	...	...
7	...	...	...
8	...	...	...
9	...	...	...
10	...	...	...
11	...	...	...
12	...	...	...
13	...	...	...
14	...	...	...
15	...	...	...
16	...	...	...
17	...	...	...
18	...	...	...
19	...	...	...
20	...	...	...
21	...	...	...
22	...	...	...
23	...	...	...
24	...	...	...
25	...	...	...
26	...	...	...
27	...	...	...
28	...	...	...
29	...	...	...
30	...	...	...
31	...	...	...
32	...	...	...
33	...	...	...
34	...	...	...
35	...	...	...
36	...	...	...
37	...	...	...
38	...	...	...
39	...	...	...
40	...	...	...
41	...	...	...
42	...	...	...
43	...	...	...
44	...	...	...
45	...	...	...
46	...	...	...
47	...	...	...
48	...	...	...
49	...	...	...
50	...	...	...

P480  
M.N.C.P. & P.C.  
3365/526

P606  
M.N.C.P. & P.C.

PARCEL "A"

WOODFIELD  
ESTATES

OPEN  
SPACE  
AREA

WATER LOTS  
ON  
LOT 10

NOTE: IF PARCELS ARE  
NOT USED IN SUBDIVISION  
THEY SHALL BE CONSIDERED  
AS DENSITY PURCHASES 0.18 A/C



- NOTES:**
1. AREA OF PROPERTY - 26.7 ACRES.
  2. EXISTING STREETS - MONTGOMERY CREEK ROAD & JACOBSON ROAD.
  3. 1.9 AC FROM MONTGOMERY CREEK ROAD.
  4. 1.9 AC FROM JACOBSON ROAD - 26.7 AC.
  5. 1.9 AC FROM JACOBSON ROAD - 26.7 AC.
  6. 1.9 AC FROM JACOBSON ROAD - 26.7 AC.
  7. 1.9 AC FROM JACOBSON ROAD - 26.7 AC.
  8. 1.9 AC FROM JACOBSON ROAD - 26.7 AC.
  9. 1.9 AC FROM JACOBSON ROAD - 26.7 AC.
  10. 1.9 AC FROM JACOBSON ROAD - 26.7 AC.
  11. 1.9 AC FROM JACOBSON ROAD - 26.7 AC.
  12. 1.9 AC FROM JACOBSON ROAD - 26.7 AC.
  13. 1.9 AC FROM JACOBSON ROAD - 26.7 AC.
  14. 1.9 AC FROM JACOBSON ROAD - 26.7 AC.
  15. 1.9 AC FROM JACOBSON ROAD - 26.7 AC.
  16. 1.9 AC FROM JACOBSON ROAD - 26.7 AC.
  17. 1.9 AC FROM JACOBSON ROAD - 26.7 AC.
  18. 1.9 AC FROM JACOBSON ROAD - 26.7 AC.
  19. 1.9 AC FROM JACOBSON ROAD - 26.7 AC.
  20. 1.9 AC FROM JACOBSON ROAD - 26.7 AC.
  21. 1.9 AC FROM JACOBSON ROAD - 26.7 AC.
  22. 1.9 AC FROM JACOBSON ROAD - 26.7 AC.
  23. 1.9 AC FROM JACOBSON ROAD - 26.7 AC.
  24. 1.9 AC FROM JACOBSON ROAD - 26.7 AC.
  25. 1.9 AC FROM JACOBSON ROAD - 26.7 AC.
  26. 1.9 AC FROM JACOBSON ROAD - 26.7 AC.
  27. 1.9 AC FROM JACOBSON ROAD - 26.7 AC.
  28. 1.9 AC FROM JACOBSON ROAD - 26.7 AC.
  29. 1.9 AC FROM JACOBSON ROAD - 26.7 AC.
  30. 1.9 AC FROM JACOBSON ROAD - 26.7 AC.
  31. 1.9 AC FROM JACOBSON ROAD - 26.7 AC.
  32. 1.9 AC FROM JACOBSON ROAD - 26.7 AC.
  33. 1.9 AC FROM JACOBSON ROAD - 26.7 AC.
  34. 1.9 AC FROM JACOBSON ROAD - 26.7 AC.
  35. 1.9 AC FROM JACOBSON ROAD - 26.7 AC.
  36. 1.9 AC FROM JACOBSON ROAD - 26.7 AC.
  37. 1.9 AC FROM JACOBSON ROAD - 26.7 AC.
  38. 1.9 AC FROM JACOBSON ROAD - 26.7 AC.
  39. 1.9 AC FROM JACOBSON ROAD - 26.7 AC.
  40. 1.9 AC FROM JACOBSON ROAD - 26.7 AC.
  41. 1.9 AC FROM JACOBSON ROAD - 26.7 AC.
  42. 1.9 AC FROM JACOBSON ROAD - 26.7 AC.
  43. 1.9 AC FROM JACOBSON ROAD - 26.7 AC.
  44. 1.9 AC FROM JACOBSON ROAD - 26.7 AC.
  45. 1.9 AC FROM JACOBSON ROAD - 26.7 AC.
  46. 1.9 AC FROM JACOBSON ROAD - 26.7 AC.
  47. 1.9 AC FROM JACOBSON ROAD - 26.7 AC.
  48. 1.9 AC FROM JACOBSON ROAD - 26.7 AC.
  49. 1.9 AC FROM JACOBSON ROAD - 26.7 AC.
  50. 1.9 AC FROM JACOBSON ROAD - 26.7 AC.

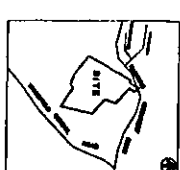


Surveyor's Name  
Professional Seal

Scale: 1" = 100'

COUNTY VIEW

Proposed Site  
Montgomery County  
Department of Planning  
and Zoning



VICINITY MAP  
Scale: 1" = 100'

**PRELIMINARY PLAN  
JOHNSON PROPERTY  
Montgomery County, Maryland**

**B&A**  
Bearing & Associates, Inc.  
Land Planning Consultants  
112 Maple Grove Court  
Columbia, MD 21047  
(410) 746-0400

date: MAY 31, 2001  
scale: 1" = 100'



Sheet 1 of 1