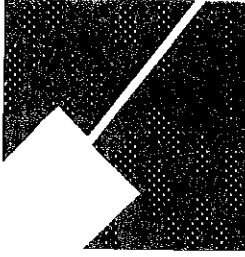


Item # 11

M-NCPPC



MONTGOMERY COUNTY DEPARTMENT OF PARK & PLANNING

THE MARYLAND-NATIONAL CAPITAL  
PARK AND PLANNING COMMISSION

8787 Georgia Avenue  
Silver Spring, Maryland 20910-3760

M E M O R A N D U M

**DATE:** January 04, 2002  
**TO:** Montgomery County Planning Board  
**FROM:** A. Malcolm Shaneman  
Development Review Division  
(301) 495-4587  
**SUBJECT:** Informational Maps for Subdivision Items on the  
Planning Board's Agenda for January 10, 2002.

---

Attached are copies of plan drawings for Items #05, #11, #12. These subdivision items are scheduled for Planning Board consideration on January 10, 2002. The items are further identified as follows:

Agenda Item #05 - Preliminary Plan 1-02040  
North Germantown-Parcel H

Agenda Item #11 - Pre-Preliminary Plan 7-99050  
Brooks Property

Agenda Item #12 - Preliminary Plan 1-02019  
Payne Farm

Attachment

VICINITY MAP FOR  
**BROOK'S PROPERTY (7-99050)**



Map compiled on January 03, 2002 at 3:55 PM | Site located on base sheet no - 223NE03

**NOTICE**

The planimetric, property, and topographic information shown on this map is based on copyrighted Map Products from the Montgomery County Department of Park and Planning of the Maryland-National Capital Park and Planning Commission, and may not be copied or reproduced without written permission from M-NCPPC.

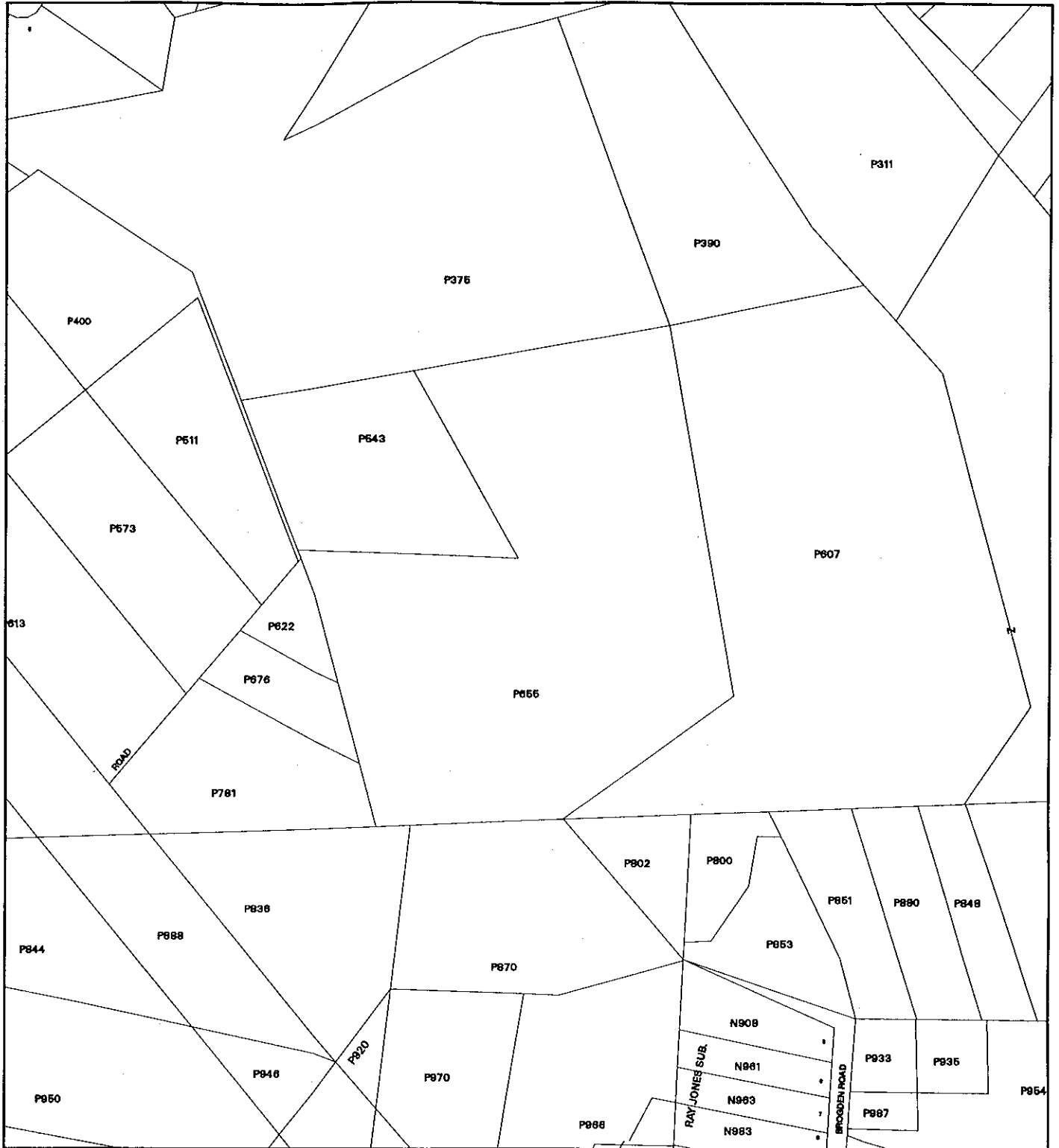
Property lines are compiled by adjusting the property lines to topography created from aerial photography and should not be interpreted as actual field surveys. Planimetric features were compiled from 1:14400 scale aerial photography using stereo photogrammetric methods.

This map is created from a variety of data sources, and may not reflect the most current conditions in any one location and may not be completely accurate or up to date. All map features are approximately within five feet of their true location. This map may not be the same as a map of the same area plotted at an earlier time as the data is continuously updated. Use of this map, other than for general planning purposes is not recommended. - Copyright 1998



1 : 4800

VICINITY MAP FOR  
**BROOK'S PROPERTY (7-99050)**



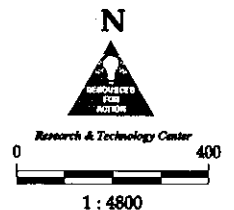
Map compiled on January 03, 2002 at 3:45 PM | Site located on base sheet no - 223NE03

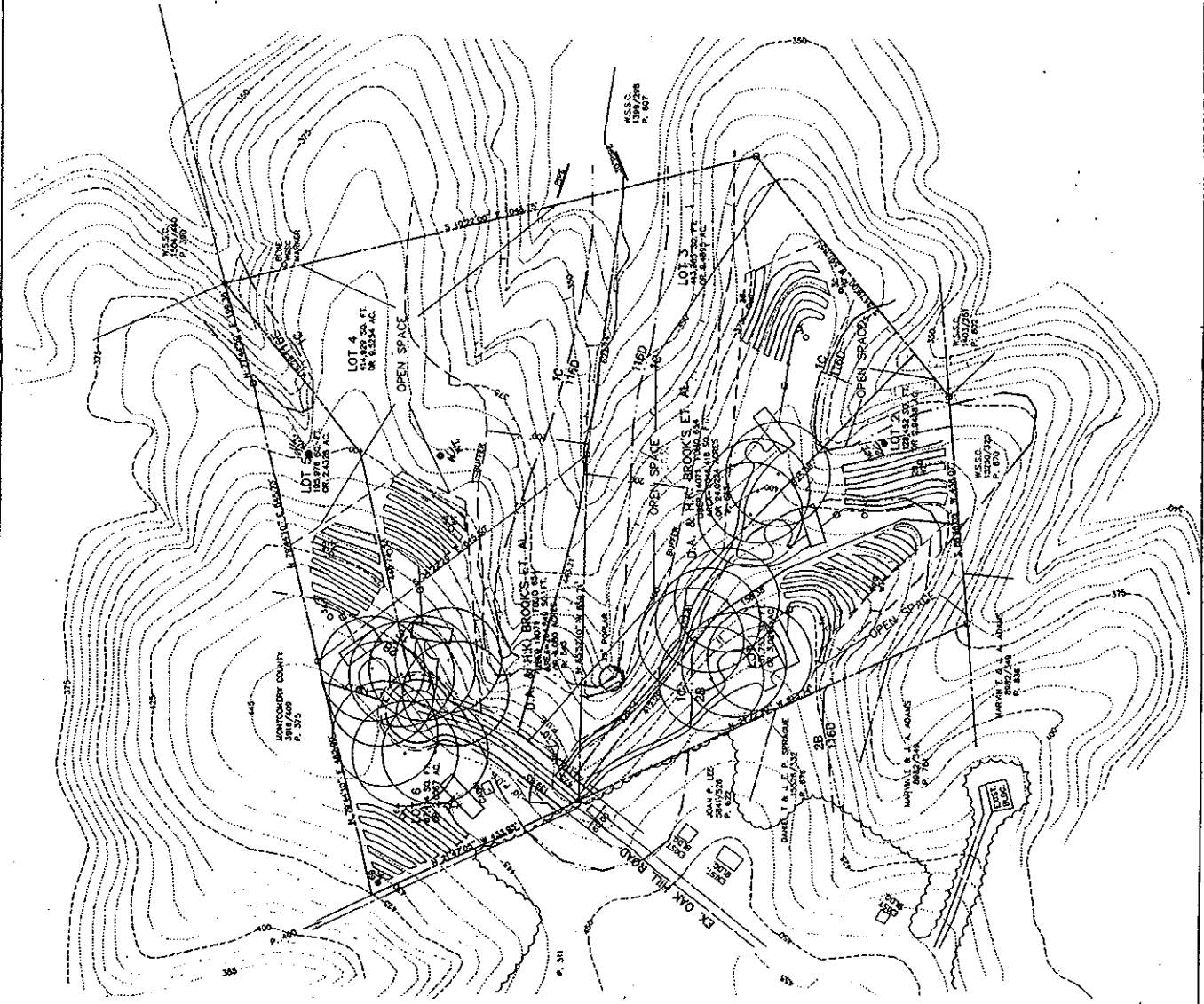
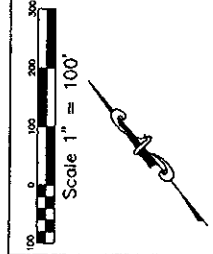
**NOTICE**

The planimetric, property, and topographic information shown on this map is based on copyrighted Map Products from the Montgomery County Department of Park and Planning of the Maryland-National Capital Park and Planning Commission, and may not be copied or reproduced without written permission from M-NCPPC.

Property lines are compiled by adjusting the property lines to topography created from aerial photography and should not be interpreted as actual field surveys. Planimetric features were compiled from 1:14400 scale aerial photography using stereo photogrammetric methods.

This map is created from a variety of data sources, and may not reflect the most current conditions in any one location and may not be completely accurate or up to date. All map features are approximately within five feet of their true location. This map may not be the same as a map of the same area plotted at an earlier time as the data is continuously updated. Use of this map, other than for general planning purposes is not recommended. - Copyright 1998





- NOTES:**
1. PROPERTY ZONE: R-C
  2. D.U.A. NO. 1
  3. TOTAL PROPERTY: 3.31 ACRES
  4. D.A. & B.L. BROOKS P-1833 24.02 ACRES
  5. LEGAL DESCRIPTION: P-1843 L 14071 F. 654 P-1833 24.02 ACRES
  6. TAX MAP: AT 241
  7. METERS: 328.08 FT.
  8. FRONT: 50 FT.
  9. REAR: 50 FT.
  10. SIDE: 50 FT.
  11. MIN. OUTSIDE: 50 FT. FROM BOUNDARY
  12. FRONT BUILDING LINE: 15 FT
  13. MIN. SIDE: 5 FT. CONTIGUOUS INTERNAL
  14. LOTS THIS PLAN: 4
  15. PROPOSED:
    - 1. WATER: 8'-0"
    - 2. WALKWAY: 4'-0"
    - 3. CONC. DRIVEWAY: 10'-0"
    - 4. CONC. DRIVEWAY: 10'-0"
    - 5. CONC. DRIVEWAY: 10'-0"
    - 6. CONC. DRIVEWAY: 10'-0"
    - 7. CONC. DRIVEWAY: 10'-0"
    - 8. CONC. DRIVEWAY: 10'-0"
    - 9. CONC. DRIVEWAY: 10'-0"
    - 10. CONC. DRIVEWAY: 10'-0"
    - 11. CONC. DRIVEWAY: 10'-0"
    - 12. CONC. DRIVEWAY: 10'-0"
    - 13. CONC. DRIVEWAY: 10'-0"
    - 14. CONC. DRIVEWAY: 10'-0"
    - 15. CONC. DRIVEWAY: 10'-0"
    - 16. CONC. DRIVEWAY: 10'-0"
    - 17. CONC. DRIVEWAY: 10'-0"
    - 18. CONC. DRIVEWAY: 10'-0"
    - 19. CONC. DRIVEWAY: 10'-0"
    - 20. CONC. DRIVEWAY: 10'-0"
  16. W.S.S.C. 1587/296 P. 607
  17. W.S.S.C. 1607/291 P. 607
  18. W.S.S.C. 1587/290 P. 607
  19. W.S.S.C. 1587/291 P. 607
  20. W.S.S.C. 1587/291 P. 607
  21. W.S.S.C. 1587/291 P. 607
  22. W.S.S.C. 1587/291 P. 607
  23. W.S.S.C. 1587/291 P. 607
  24. W.S.S.C. 1587/291 P. 607
  25. W.S.S.C. 1587/291 P. 607
  26. W.S.S.C. 1587/291 P. 607
  27. W.S.S.C. 1587/291 P. 607
  28. W.S.S.C. 1587/291 P. 607
  29. W.S.S.C. 1587/291 P. 607
  30. W.S.S.C. 1587/291 P. 607
  31. W.S.S.C. 1587/291 P. 607
  32. W.S.S.C. 1587/291 P. 607
  33. W.S.S.C. 1587/291 P. 607
  34. W.S.S.C. 1587/291 P. 607
  35. W.S.S.C. 1587/291 P. 607
  36. W.S.S.C. 1587/291 P. 607
  37. W.S.S.C. 1587/291 P. 607
  38. W.S.S.C. 1587/291 P. 607
  39. W.S.S.C. 1587/291 P. 607
  40. W.S.S.C. 1587/291 P. 607
  41. W.S.S.C. 1587/291 P. 607
  42. W.S.S.C. 1587/291 P. 607
  43. W.S.S.C. 1587/291 P. 607
  44. W.S.S.C. 1587/291 P. 607
  45. W.S.S.C. 1587/291 P. 607
  46. W.S.S.C. 1587/291 P. 607
  47. W.S.S.C. 1587/291 P. 607
  48. W.S.S.C. 1587/291 P. 607
  49. W.S.S.C. 1587/291 P. 607
  50. W.S.S.C. 1587/291 P. 607
  51. W.S.S.C. 1587/291 P. 607
  52. W.S.S.C. 1587/291 P. 607
  53. W.S.S.C. 1587/291 P. 607
  54. W.S.S.C. 1587/291 P. 607
  55. W.S.S.C. 1587/291 P. 607
  56. W.S.S.C. 1587/291 P. 607
  57. W.S.S.C. 1587/291 P. 607
  58. W.S.S.C. 1587/291 P. 607
  59. W.S.S.C. 1587/291 P. 607
  60. W.S.S.C. 1587/291 P. 607
  61. W.S.S.C. 1587/291 P. 607
  62. W.S.S.C. 1587/291 P. 607
  63. W.S.S.C. 1587/291 P. 607
  64. W.S.S.C. 1587/291 P. 607
  65. W.S.S.C. 1587/291 P. 607
  66. W.S.S.C. 1587/291 P. 607
  67. W.S.S.C. 1587/291 P. 607
  68. W.S.S.C. 1587/291 P. 607
  69. W.S.S.C. 1587/291 P. 607
  70. W.S.S.C. 1587/291 P. 607
  71. W.S.S.C. 1587/291 P. 607
  72. W.S.S.C. 1587/291 P. 607
  73. W.S.S.C. 1587/291 P. 607
  74. W.S.S.C. 1587/291 P. 607
  75. W.S.S.C. 1587/291 P. 607
  76. W.S.S.C. 1587/291 P. 607
  77. W.S.S.C. 1587/291 P. 607
  78. W.S.S.C. 1587/291 P. 607
  79. W.S.S.C. 1587/291 P. 607
  80. W.S.S.C. 1587/291 P. 607
  81. W.S.S.C. 1587/291 P. 607
  82. W.S.S.C. 1587/291 P. 607
  83. W.S.S.C. 1587/291 P. 607
  84. W.S.S.C. 1587/291 P. 607
  85. W.S.S.C. 1587/291 P. 607
  86. W.S.S.C. 1587/291 P. 607
  87. W.S.S.C. 1587/291 P. 607
  88. W.S.S.C. 1587/291 P. 607
  89. W.S.S.C. 1587/291 P. 607
  90. W.S.S.C. 1587/291 P. 607
  91. W.S.S.C. 1587/291 P. 607
  92. W.S.S.C. 1587/291 P. 607
  93. W.S.S.C. 1587/291 P. 607
  94. W.S.S.C. 1587/291 P. 607
  95. W.S.S.C. 1587/291 P. 607
  96. W.S.S.C. 1587/291 P. 607
  97. W.S.S.C. 1587/291 P. 607
  98. W.S.S.C. 1587/291 P. 607
  99. W.S.S.C. 1587/291 P. 607
  100. W.S.S.C. 1587/291 P. 607
  101. W.S.S.C. 1587/291 P. 607
  102. W.S.S.C. 1587/291 P. 607
  103. W.S.S.C. 1587/291 P. 607
  104. W.S.S.C. 1587/291 P. 607
  105. W.S.S.C. 1587/291 P. 607
  106. W.S.S.C. 1587/291 P. 607
  107. W.S.S.C. 1587/291 P. 607
  108. W.S.S.C. 1587/291 P. 607
  109. W.S.S.C. 1587/291 P. 607
  110. W.S.S.C. 1587/291 P. 607
  111. W.S.S.C. 1587/291 P. 607
  112. W.S.S.C. 1587/291 P. 607
  113. W.S.S.C. 1587/291 P. 607
  114. W.S.S.C. 1587/291 P. 607
  115. W.S.S.C. 1587/291 P. 607
  116. W.S.S.C. 1587/291 P. 607
  117. W.S.S.C. 1587/291 P. 607
  118. W.S.S.C. 1587/291 P. 607
  119. W.S.S.C. 1587/291 P. 607
  120. W.S.S.C. 1587/291 P. 607
  121. W.S.S.C. 1587/291 P. 607
  122. W.S.S.C. 1587/291 P. 607
  123. W.S.S.C. 1587/291 P. 607
  124. W.S.S.C. 1587/291 P. 607
  125. W.S.S.C. 1587/291 P. 607
  126. W.S.S.C. 1587/291 P. 607
  127. W.S.S.C. 1587/291 P. 607
  128. W.S.S.C. 1587/291 P. 607
  129. W.S.S.C. 1587/291 P. 607
  130. W.S.S.C. 1587/291 P. 607
  131. W.S.S.C. 1587/291 P. 607
  132. W.S.S.C. 1587/291 P. 607
  133. W.S.S.C. 1587/291 P. 607
  134. W.S.S.C. 1587/291 P. 607
  135. W.S.S.C. 1587/291 P. 607
  136. W.S.S.C. 1587/291 P. 607
  137. W.S.S.C. 1587/291 P. 607
  138. W.S.S.C. 1587/291 P. 607
  139. W.S.S.C. 1587/291 P. 607
  140. W.S.S.C. 1587/291 P. 607
  141. W.S.S.C. 1587/291 P. 607
  142. W.S.S.C. 1587/291 P. 607
  143. W.S.S.C. 1587/291 P. 607
  144. W.S.S.C. 1587/291 P. 607
  145. W.S.S.C. 1587/291 P. 607
  146. W.S.S.C. 1587/291 P. 607
  147. W.S.S.C. 1587/291 P. 607
  148. W.S.S.C. 1587/291 P. 607
  149. W.S.S.C. 1587/291 P. 607
  150. W.S.S.C. 1587/291 P. 607
  151. W.S.S.C. 1587/291 P. 607
  152. W.S.S.C. 1587/291 P. 607
  153. W.S.S.C. 1587/291 P. 607
  154. W.S.S.C. 1587/291 P. 607
  155. W.S.S.C. 1587/291 P. 607
  156. W.S.S.C. 1587/291 P. 607
  157. W.S.S.C. 1587/291 P. 607
  158. W.S.S.C. 1587/291 P. 607
  159. W.S.S.C. 1587/291 P. 607
  160. W.S.S.C. 1587/291 P. 607
  161. W.S.S.C. 1587/291 P. 607
  162. W.S.S.C. 1587/291 P. 607
  163. W.S.S.C. 1587/291 P. 607
  164. W.S.S.C. 1587/291 P. 607
  165. W.S.S.C. 1587/291 P. 607
  166. W.S.S.C. 1587/291 P. 607
  167. W.S.S.C. 1587/291 P. 607
  168. W.S.S.C. 1587/291 P. 607
  169. W.S.S.C. 1587/291 P. 607
  170. W.S.S.C. 1587/291 P. 607
  171. W.S.S.C. 1587/291 P. 607
  172. W.S.S.C. 1587/291 P. 607
  173. W.S.S.C. 1587/291 P. 607
  174. W.S.S.C. 1587/291 P. 607
  175. W.S.S.C. 1587/291 P. 607
  176. W.S.S.C. 1587/291 P. 607
  177. W.S.S.C. 1587/291 P. 607
  178. W.S.S.C. 1587/291 P. 607
  179. W.S.S.C. 1587/291 P. 607
  180. W.S.S.C. 1587/291 P. 607
  181. W.S.S.C. 1587/291 P. 607
  182. W.S.S.C. 1587/291 P. 607
  183. W.S.S.C. 1587/291 P. 607
  184. W.S.S.C. 1587/291 P. 607
  185. W.S.S.C. 1587/291 P. 607
  186. W.S.S.C. 1587/291 P. 607
  187. W.S.S.C. 1587/291 P. 607
  188. W.S.S.C. 1587/291 P. 607
  189. W.S.S.C. 1587/291 P. 607
  190. W.S.S.C. 1587/291 P. 607
  191. W.S.S.C. 1587/291 P. 607
  192. W.S.S.C. 1587/291 P. 607
  193. W.S.S.C. 1587/291 P. 607
  194. W.S.S.C. 1587/291 P. 607
  195. W.S.S.C. 1587/291 P. 607
  196. W.S.S.C. 1587/291 P. 607
  197. W.S.S.C. 1587/291 P. 607
  198. W.S.S.C. 1587/291 P. 607
  199. W.S.S.C. 1587/291 P. 607
  200. W.S.S.C. 1587/291 P. 607

- LEGEND:**
- 1:00 SLOPES
  - 2:00 SLOPES
  - 3:00 SLOPES
  - SAMPLE POINTS
  - 5' TO 10' GRADE
  - DEMS. CONTOUR
  - WALKWAY
  - BUFFER
  - OPEN SPACE
  - PROPERTY LINE



THIS PLAN IS PREPARED USING CONVENTIONAL SURVEYING METHODS AND FIELD SURVEY DATA.

*John C. [Signature]* 9/16/19

LAND SURVEYOR, MARYLAND

CAPITAL DEVELOPMENT DESIGN, INC.  
 ENGINEERS - PLANNERS - SURVEYORS  
 3946 BARNHARTT AVENUE - SUITE 200 - MESSYVALES, MD 20715  
 PHONE (301) 988-1781 FAX (301) 982-1994

BROOKS' PROPERTY  
 OAK HILL ROAD  
 MONTGOMERY COUNTY, MARYLAND  
 ( U ) ELECTRON DISTRICT

PRE-PRELIMINARY PLAN  
 # 7-1990

REVISIONS	
DATE	DESCRIPTION

DATE: MARCH 1992  
 DRAWN: SFP  
 CHECKED: DB  
 SCALE: 1"=100'  
 PROJECT/FIELD NO.: 86-008  
 SHEET NO. 1 OF 1