

THE MARYLAND-NATIONAL CAPITAL PARK AND PLANNING COMMISSION

8787 Georgia Avenue • Silver Spring, Maryland 20910-3760

(301) 495-4605

MEMORANDUM

DATE: March 8, 2002
TO: Montgomery County Planning Board
FROM: A. Malcolm Shaneman
Development Review
(301) 495-4587
SUBJECT: Informational Maps for Subdivision Items on the Planning Board's Agenda for March 14, 2002.

Attached are copies of plan drawings for Items #4, #5, #6 and #7. These subdivision items are scheduled for Planning Board consideration on March 14, 2002. The items are further identified as follows:

Agenda Item #4 – Preliminary Plan 1-97007E
Olney Church of Christ

Agenda Item #5 – Preliminary Plan 1-02035
Grandview Townhomes

Agenda Item #6 – Preliminary Plan 1-02059
Daniels Property of Muncaster Mill

Agenda Item #7 – Preliminary Plan 1-02025
North Potomac Senior Housing

4

WALLACE R. AMOS & ASSOCIATES LTD.
Land Surveyors
P.O.Box 4093
Silver Spring, Maryland 20914-4093
(301) 879-1481

Maryland National Capitol Park & Planning commission
Development Review Division
8787 Georgia Avenue
Silver Spring, Maryland 20910

January 12, 2002

Dear Sir ;

This letter is to request an extension of six months on the validity period for preliminary plan for The Olney Church of Christ (Preliminary Plan No. 1-97007).

Due to certain circumstances I have been unable to complete this plat on time, it is now however almost complete and will be so within the requested time frame.

At the preliminary plan stage WSSC requested that we not use the sewer connection that we had planed, (a long outfall through adjacent property owned by the Church). But rather use a connection to the North of the property where a connection was to be provided for the house next door who was having septic problems. I was to be advised of the plan and progress by WSSC. But apparently some one forget me and the first I heard of the sewer connection was when I was told that the sewer lateral was installed. I knew that they were having trouble obtaining a right of way, however I was not informed of their progress.

The storm water management plan seemed to take an inordinate time. I now know that the engineer working on this for me was not well and that may explain some of the delay in obtaining approval,

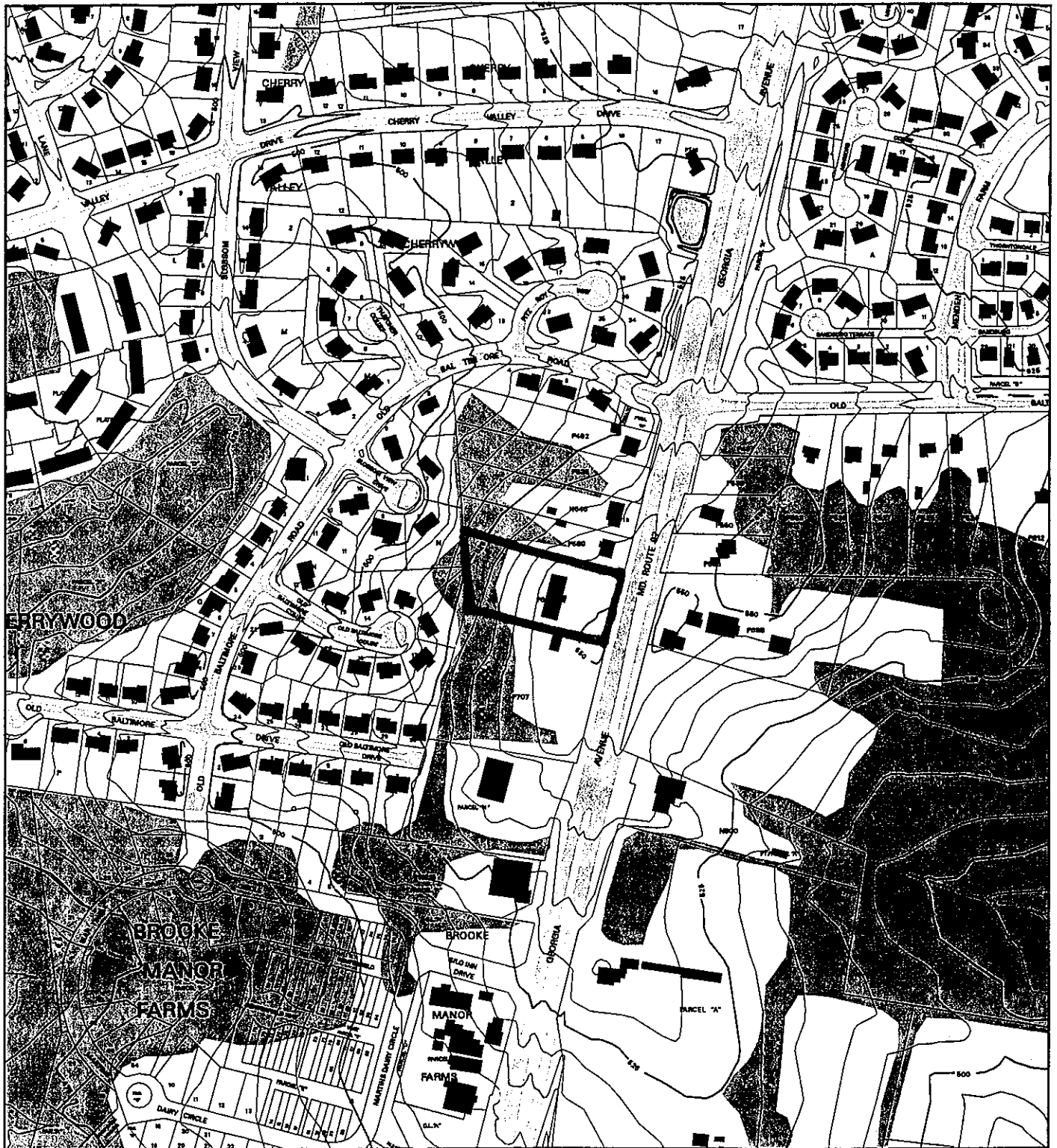
The plat is now completed except for minor adjustments requested by MNC&PC and is now at the Park Commission for final approval

I thank you in advance for your help in this matter.


Billy D. Mizell

VICINITY MAP FOR

OLNEY CHURCH OF CHRIST (1-97007)



Map compiled on August 31, 1989 at 11:26 AM

NOTICE

The planimetric, property, and topographic information shown on this map is based on copyrighted Map Products from the Montgomery County Department of Park and Planning of the Maryland-National Capital Park and Planning Commission, and may not be copied or reproduced without written permission from M-NCPPC.

Property lines are compiled by adjusting the property lines to topography created from aerial photography and should not be interpreted as actual field surveys. Planimetric features were compiled from 1:14400 scale aerial photography using stereo photogrammetric methods.

This map is created from a variety of data sources, and may not reflect the most current conditions in any one location and may not be completely accurate or up to date. All map features are approximately within five feet of their true location. This map may not be the same as a map of the same area plotted at an earlier time as the data is continuously updated. Use of this map, other than for general planning purposes is not recommended. - Copyright 1988

Key Map



Research & Technology Center

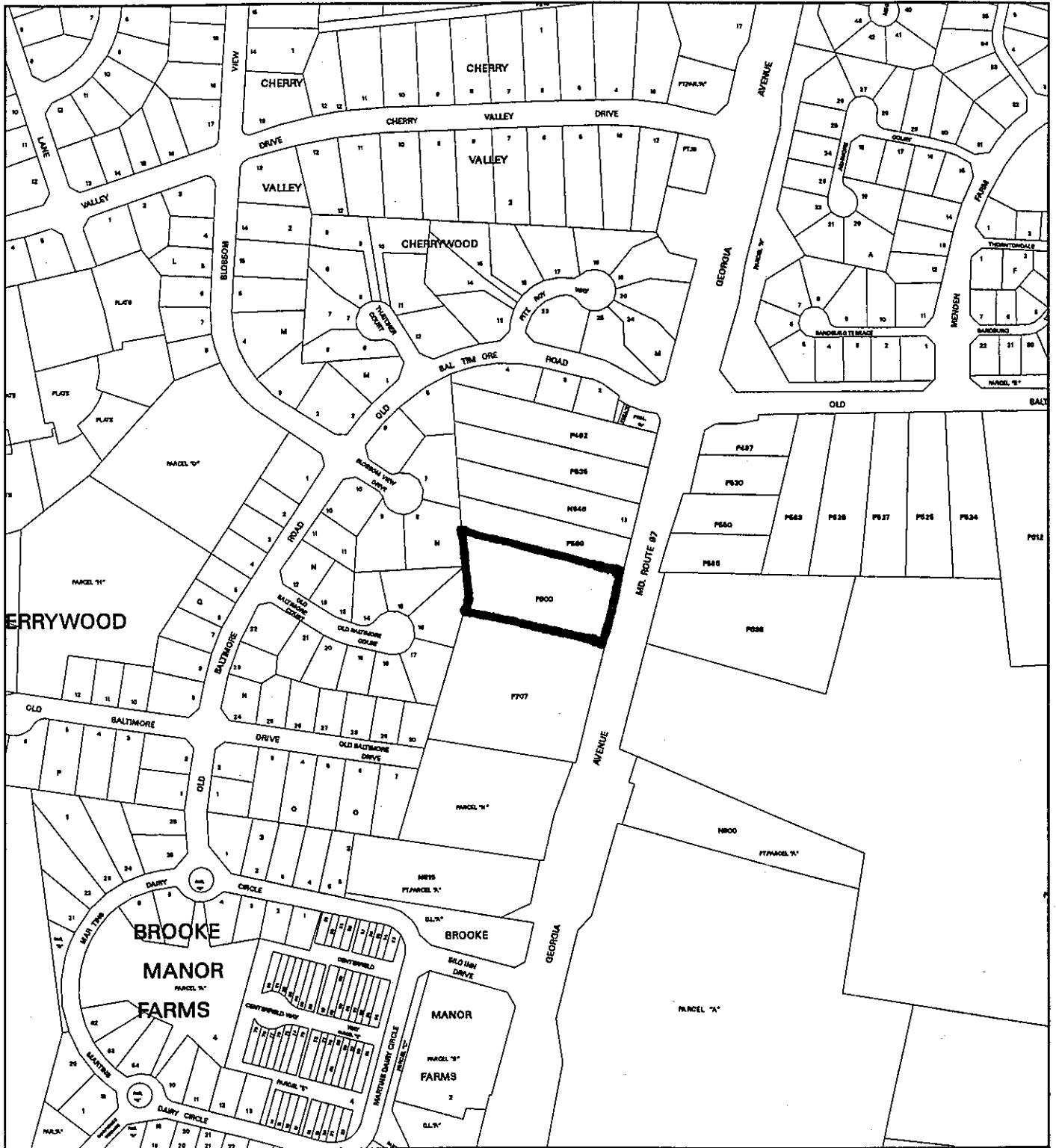


1:4800

MONTGOMERY COUNTY DEPARTMENT OF PARK AND PLANNING
THE MARYLAND-NATIONAL CAPITAL PARK AND PLANNING COMMISSION
8787 Georgia Avenue - Silver Spring, Maryland 20910-3750

VICINITY MAP FOR

OLNEY CHURCH OF CHRIST (1-97007)



Map compiled on August 31, 1989 at 12:05 PM

NOTICE

The planimetric, property, and topographic information shown on this map is based on copyrighted Map Products from the Montgomery County Department of Park and Planning of the Maryland - National Capital Park and Planning Commission, and may not be copied or reproduced without written permission from M-NCPPC.

Property lines are compiled by adjusting the property lines to topography created from aerial photography and should not be interpreted as actual field surveys. Planimetric features were compiled from 1:14400 scale aerial photography using stereo photogrammetric methods.

This map is created from a variety of data sources, and may not reflect the most current conditions in any one location and may not be completely accurate or up to date. All map features are approximately within five feet of their true location. This map may not be the same as a map of the same area plotted at an earlier time as the data is continuously updated. Use of this map, other than for general planning purposes is not recommended. - Copyright 1988

Key Map



N



Research & Technology Center



1 : 4800

