

Item # 5



THE MARYLAND-NATIONAL CAPITAL PARK AND PLANNING COMMISSION

MEMORANDUM

DATE: June 07, 2002
TO: Montgomery County Planning Board
FROM: A. Malcolm Shaneman
Development Review Division
(301) 495-4587
SUBJECT: Informational Maps for Subdivision Items on the
Planning Board's Agenda for June 13, 2002.

Attached are copies of plan drawings for Items #05, #07, #08, #09. These subdivision items are scheduled for Planning Board consideration on June 13, 2002. The items are further identified as follows:

Agenda Item #05 - Preliminary Plan 1-02068
Fairfield at Germantown

Agenda Item #07 - Preliminary Plan 1-02098
Goshen Estates

Agenda Item #08 - Preliminary Plan 1-02071
B.F. Leighton's Addition to Woodside

Agenda Item #09 - Preliminary Plan 1-02101
Hoover Property

Attachment

VICINITY MAP FOR

FAIRFIELD AT GERMANTOWN (1-02068)



Map compiled on June 06, 2002 at 6:49 PM | Site located on base sheet no - 227NW13

NOTICE

The planimetric, property, and topographic information shown on this map is based on copyrighted Map Products from the Montgomery County Department of Park and Planning of the Maryland-National Capital Park and Planning Commission, and may not be copied or reproduced without written permission from M-NCPPC.

Property lines are compiled by adjusting the property lines to topography created from aerial photography and should not be interpreted as actual field surveys. Planimetric features were compiled from 1:14400 scale aerial photography using stereo photogrammetric methods.

This map is created from a variety of data sources, and may not reflect the most current conditions in any one location and may not be completely accurate or up to date. All map features are approximately within five feet of their true location. This map may not be the same as a map of the same area plotted at an earlier time as the data is continuously updated. Use of this map, other than for general planning purposes is not recommended. - Copyright 1998

Key Map



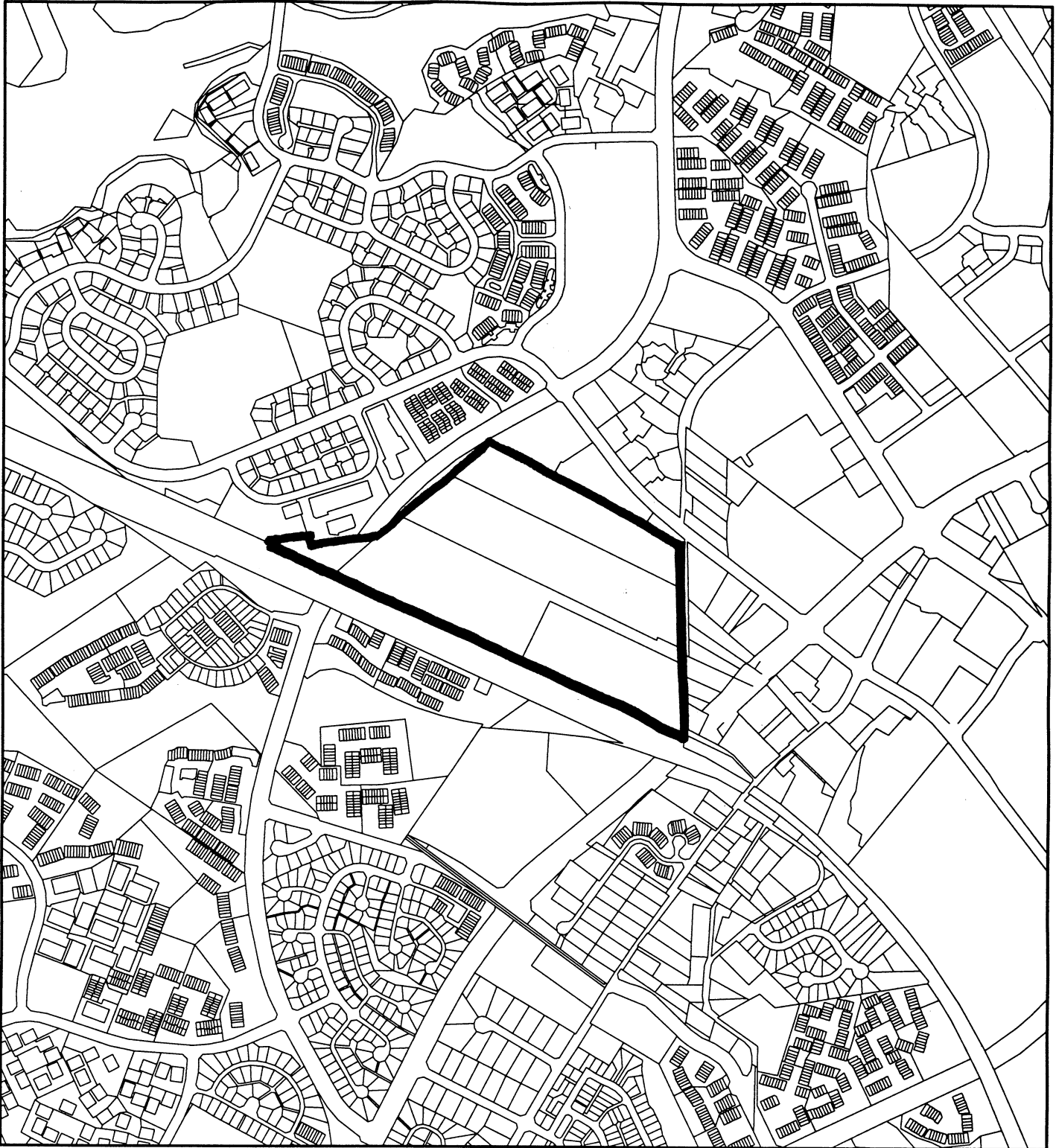
N



1 : 12000

VICINITY MAP FOR

FAIRFIELD AT GERMANTOWN (1-02068)



Map compiled on June 06, 2002 at 7:00 PM | Site located on base sheet no - 227NW13

NOTICE

The planimetric, property, and topographic information shown on this map is based on copyrighted Map Products from the Montgomery County Department of Park and Planning of the Maryland-National Capital Park and Planning Commission, and may not be copied or reproduced without written permission from M-NCPPC.

Property lines are compiled by adjusting the property lines to topography created from aerial photography and should not be interpreted as actual field surveys. Planimetric features were compiled from 1:14400 scale aerial photography using stereo photogrammetric methods.

This map is created from a variety of data sources, and may not reflect the most current conditions in any one location and may not be completely accurate or up to date. All map features are approximately within five feet of their true location. This map may not be the same as a map of the same area plotted at an earlier time as the data is continuously updated. Use of this map, other than for general planning purposes is not recommended. - Copyright 1998

Key Map



