

Item #14



THE MARYLAND-NATIONAL CAPITAL PARK AND PLANNING COMMISSION

MEMORANDUM

DATE: July 26, 2002

TO: Montgomery County Planning Board

FROM: A. Malcolm Shaneman
Development Review Division
(301) 495-4587

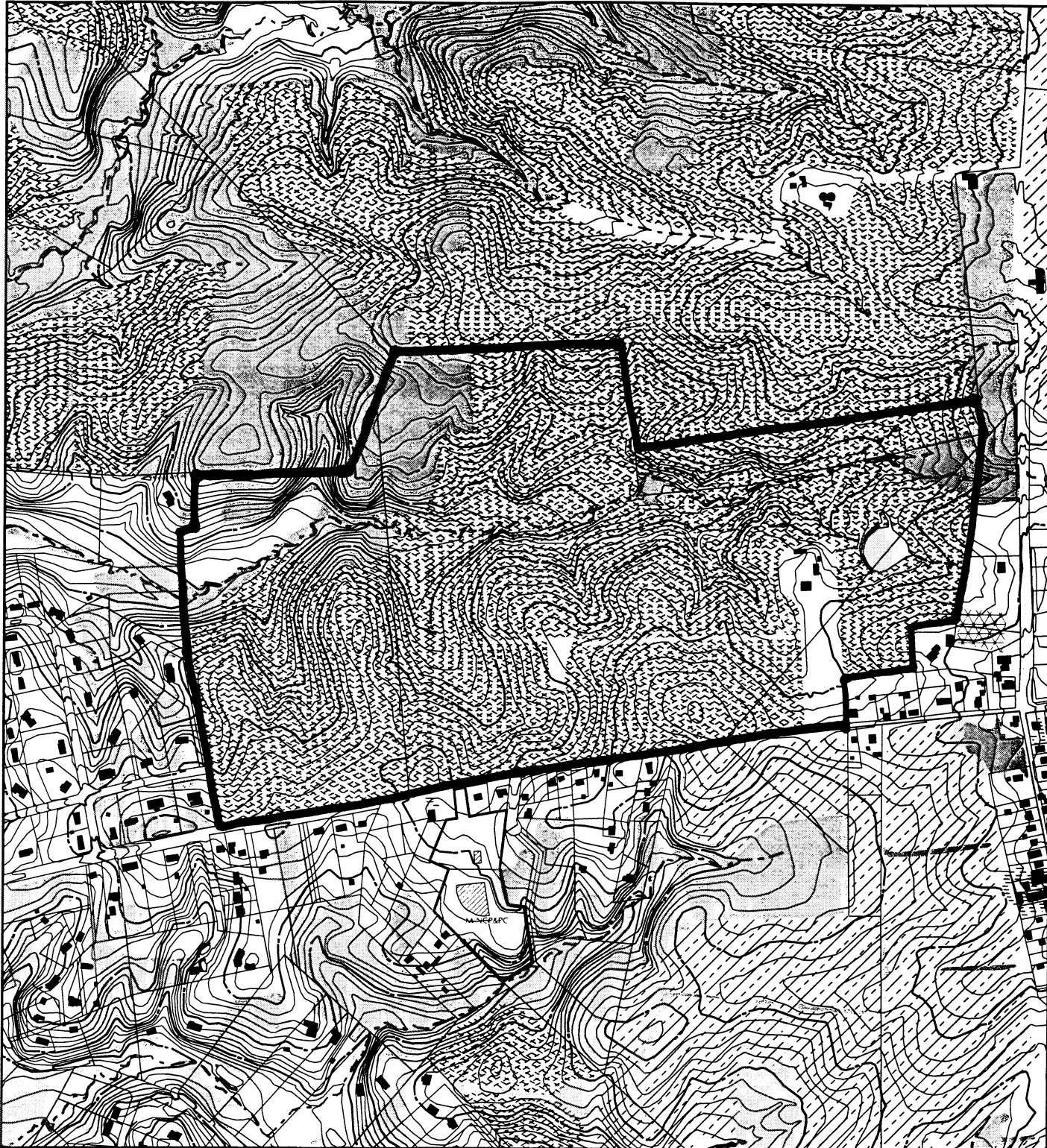
SUBJECT: Informational Maps for Subdivision Items on the
Planning Board's Agenda for August 1, 2002.

Attached are copies of plan drawings for Items #09, #11, #13, #14, #15, #16. These subdivision items are scheduled for Planning Board consideration on August 1, 2002. The items are further identified as follows:

- Agenda Item #09 - Preliminary Plan 1-02086
Layhill Village
- Agenda Item #11 - Preliminary Plan 1-02109
Plyers Mill Estates
- Agenda Item #13 - Preliminary Plan 1-02106
Chestnut Hills-Johnson's Addition
- Agenda Item #14 - Preliminary Plan 1-02032
Jones Property
- Agenda Item #15 - Preliminary Plan 1-02110
Selborne House at Saint Mark's
- Agenda Item #16 - Preliminary Plan 1-02075
Inverness Forest

Attachment

VICINITY MAP FOR
JONES PROPERTY (1-02032)



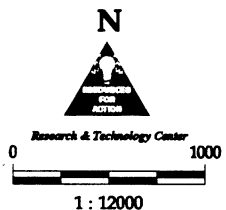
Map compiled on October 11, 2001 at 12:23 PM | Site located on base sheet no - 230NW07

NOTICE

The planimetric, property, and topographic information shown on this map is based on copyrighted Map Products from the Montgomery County Department of Park and Planning of the Maryland-National Capital Park and Planning Commission, and may not be copied or reproduced without written permission from M-NCPPC.

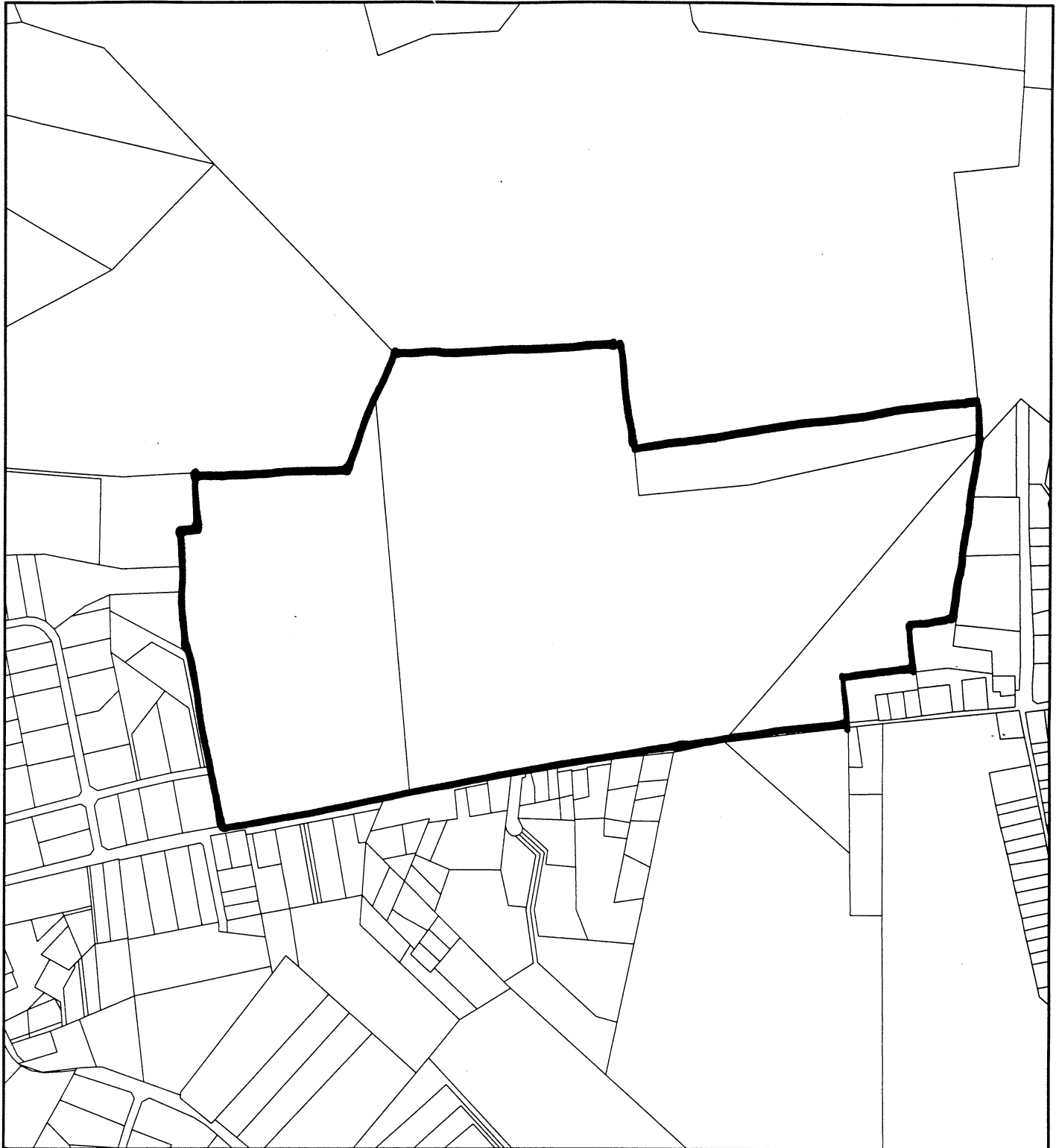
Property lines are compiled by adjusting the property lines to topography created from aerial photography and should not be interpreted as actual field surveys. Planimetric features were compiled from 1:14400 scale aerial photography using stereo photogrammetric methods.

This map is created from a variety of data sources, and may not reflect the most current conditions in any one location and may not be completely accurate or up to date. All map features are approximately within five feet of their true location. This map may not be the same as a map of the same area plotted at an earlier time as the data is continuously updated. Use of this map, other than for general planning purposes is not recommended. - Copyright 1998



VICINITY MAP FOR

JONES PROPERTY (1-02032)



Map compiled on October 11, 2001 at 1:22 PM | Site located on base sheet no - 230NW07

NOTICE

The planimetric, property, and topographic information shown on this map is based on copyrighted Map Products from the Montgomery County Department of Park and Planning of the Maryland-National Capital Park and Planning Commission, and may not be copied or reproduced without written permission from M-NCPPC.

Property lines are compiled by adjusting the property lines to topography created from aerial photography and should not be interpreted as actual field surveys. Planimetric features were compiled from 1:14400 scale aerial photography using stereo photogrammetric methods.

This map is created from a variety of data sources, and may not reflect the most current conditions in any one location and may not be completely accurate or up to date. All map features are approximately within five feet of their true location. This map may not be the same as a map of the same area plotted at an earlier time as the data is continuously updated. Use of this map, other than for general planning purposes is not recommended. - Copyright 1998

Key Map



N



1 : 12000

M-NCPPC



MONTGOMERY COUNTY DEPARTMENT OF PARK AND PLANNING
THE MARYLAND-NATIONAL CAPITAL PARK AND PLANNING COMMISSION

8787 Georgia Avenue - Silver Spring, Maryland 20910-3760

