

Item #8



THE MARYLAND-NATIONAL CAPITAL PARK AND PLANNING COMMISSION

MEMORANDUM

DATE: September 20, 2002

TO: Montgomery County Planning Board

FROM: A. Malcolm Shaneman
Development Review Division
(301) 495-4587

SUBJECT: Informational Maps for Subdivision Items on the
Planning Board's Agenda for September 26, 2002.

Attached are copies of plan drawings for Items #01, #05, #08, #10, #11, #12. These subdivision items are scheduled for Planning Board consideration on September 26, 2002. The items are further identified as follows:

- Agenda Item #01 - Preliminary Plan 1-99088
Arlington East
- Agenda Item #05 - Preliminary Plan 1-02099
Silver Spring Square
- Agenda Item #08 - Preliminary Plan 1-02094
Green Hills Subdivision
- Agenda Item #10 - Preliminary Plan 1-03002
Manor Spring West
- Agenda Item #11 - Subdivision Regulation Waiver SRW-03000
Arcola
- Agenda Item #12 - Preliminary Plan 1-00009
Armenian Youth Center

Attachment

VICINITY MAP FOR
GREEN HILLS SUBDIVISION (1-02094)



Map compiled on April 08, 2002 at 10:48 AM | Site located on base sheet no - 235NW10

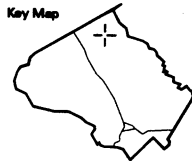
NOTICE

The planimetric, property, and topographic information shown on this map is based on copyrighted Map Products from the Montgomery County Department of Park and Planning of the Maryland-National Capital Park and Planning Commission, and may not be copied or reproduced without written permission from M-NCPPC.

Property lines are compiled by adjusting the property lines to topography created from aerial photography and should not be interpreted as actual field surveys. Planimetric features were compiled from 1:14400 scale aerial photography using stereo photogrammetric methods.

This map is created from a variety of data sources, and may not reflect the most current conditions in any one location and may not be completely accurate or up to date. All map features are approximately within five feet of their true location. This map may not be the same as a map of the same area plotted at an earlier time as the data is continuously updated. Use of this map, other than for general planning purposes is not recommended. ; Copyright 1998

Key Map



N

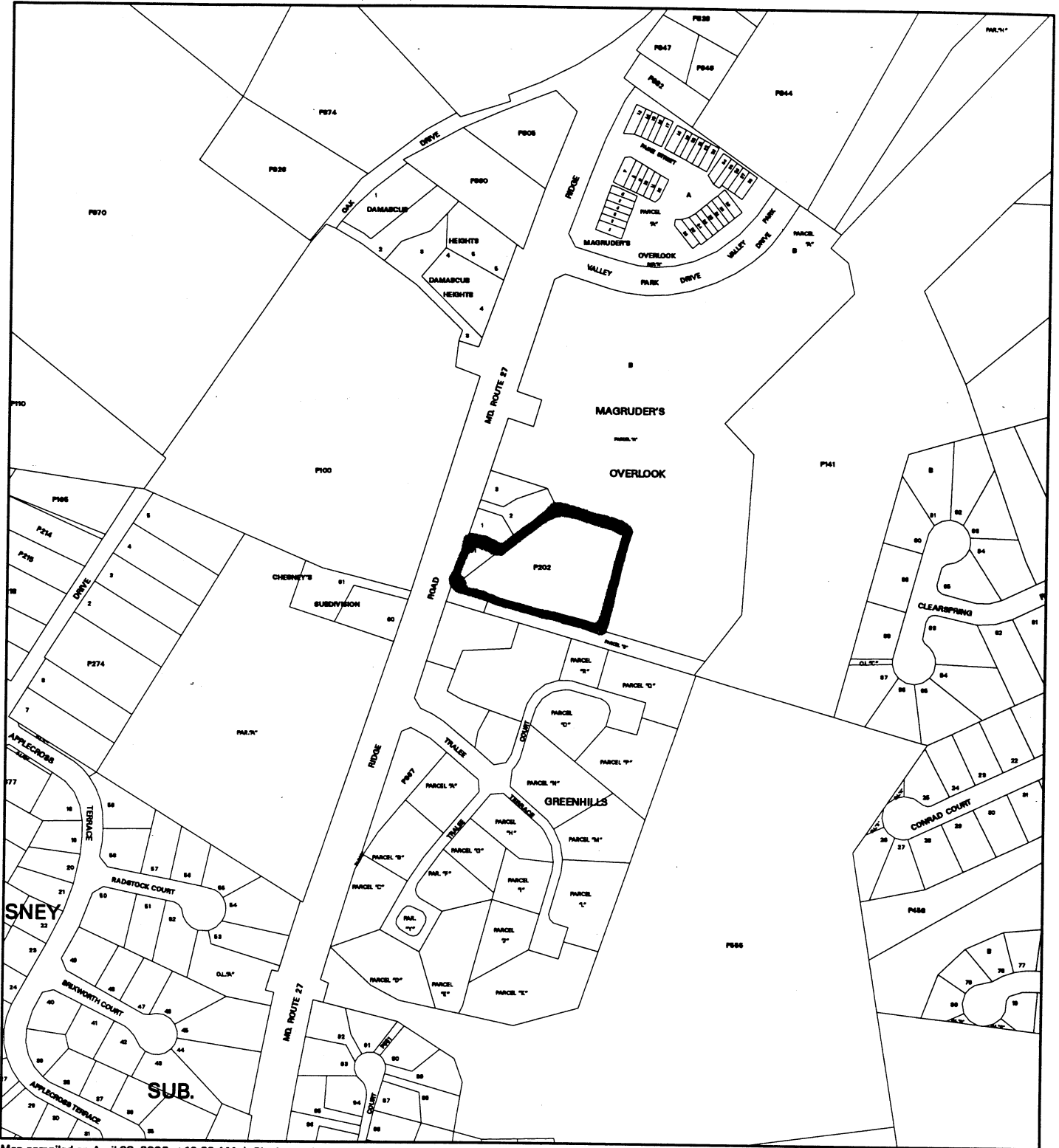


Research & Technology Center



1:4800

VICINITY MAP FOR
GREEN HILLS SUBDIVISION (1-02094)



Map compiled on April 08, 2002 at 10:23 AM | Site located on base sheet no - 235NW10

NOTICE

The planimetric, property, and topographic information shown on this map is based on copyrighted Map Products from the Montgomery County Department of Park and Planning of the Maryland-National Capital Park and Planning Commission, and may not be copied or reproduced without written permission from M-NCPPC.

Property lines are compiled by adjusting the property lines to topography created from aerial photography and should not be interpreted as actual field surveys. Planimetric features were compiled from 1:14400 scale aerial photography using stereo photogrammetric methods.

This map is created from a variety of data sources, and may not reflect the most current conditions in any one location and may not be completely accurate or up to date. All map features are approximately within five feet of their true location. This map may not be the same as a map of the same area plotted at an earlier time as the data is continuously updated. Use of this map, other than for general planning purposes is not recommended. Copyright 1998

Key Map



1 : 4800

GENERAL NOTES

1. General Notes: 2.31 Ac (see sheet)
2. Lot 101: 2.00 Ac
3. Lot 102: 0.31 Ac (see sheet)
4. Lot 103: 0.31 Ac (see sheet)
5. Lot 104: 0.31 Ac (see sheet)
6. Lot 105: 0.31 Ac (see sheet)
7. Lot 106: 0.31 Ac (see sheet)
8. Lot 107: 0.31 Ac (see sheet)
9. Lot 108: 0.31 Ac (see sheet)
10. Lot 109: 0.31 Ac (see sheet)
11. Lot 110: 0.31 Ac (see sheet)
12. Lot 111: 0.31 Ac (see sheet)
13. Lot 112: 0.31 Ac (see sheet)
14. Lot 113: 0.31 Ac (see sheet)
15. Lot 114: 0.31 Ac (see sheet)
16. Lot 115: 0.31 Ac (see sheet)
17. Lot 116: 0.31 Ac (see sheet)
18. Lot 117: 0.31 Ac (see sheet)
19. Lot 118: 0.31 Ac (see sheet)
20. Lot 119: 0.31 Ac (see sheet)
21. Lot 120: 0.31 Ac (see sheet)
22. Lot 121: 0.31 Ac (see sheet)
23. Lot 122: 0.31 Ac (see sheet)
24. Lot 123: 0.31 Ac (see sheet)
25. Lot 124: 0.31 Ac (see sheet)
26. Lot 125: 0.31 Ac (see sheet)
27. Lot 126: 0.31 Ac (see sheet)
28. Lot 127: 0.31 Ac (see sheet)
29. Lot 128: 0.31 Ac (see sheet)
30. Lot 129: 0.31 Ac (see sheet)
31. Lot 130: 0.31 Ac (see sheet)
32. Lot 131: 0.31 Ac (see sheet)
33. Lot 132: 0.31 Ac (see sheet)
34. Lot 133: 0.31 Ac (see sheet)
35. Lot 134: 0.31 Ac (see sheet)
36. Lot 135: 0.31 Ac (see sheet)
37. Lot 136: 0.31 Ac (see sheet)
38. Lot 137: 0.31 Ac (see sheet)
39. Lot 138: 0.31 Ac (see sheet)
40. Lot 139: 0.31 Ac (see sheet)
41. Lot 140: 0.31 Ac (see sheet)
42. Lot 141: 0.31 Ac (see sheet)
43. Lot 142: 0.31 Ac (see sheet)
44. Lot 143: 0.31 Ac (see sheet)
45. Lot 144: 0.31 Ac (see sheet)
46. Lot 145: 0.31 Ac (see sheet)
47. Lot 146: 0.31 Ac (see sheet)
48. Lot 147: 0.31 Ac (see sheet)
49. Lot 148: 0.31 Ac (see sheet)
50. Lot 149: 0.31 Ac (see sheet)
51. Lot 150: 0.31 Ac (see sheet)
52. Lot 151: 0.31 Ac (see sheet)
53. Lot 152: 0.31 Ac (see sheet)
54. Lot 153: 0.31 Ac (see sheet)
55. Lot 154: 0.31 Ac (see sheet)
56. Lot 155: 0.31 Ac (see sheet)
57. Lot 156: 0.31 Ac (see sheet)
58. Lot 157: 0.31 Ac (see sheet)
59. Lot 158: 0.31 Ac (see sheet)
60. Lot 159: 0.31 Ac (see sheet)
61. Lot 160: 0.31 Ac (see sheet)
62. Lot 161: 0.31 Ac (see sheet)
63. Lot 162: 0.31 Ac (see sheet)
64. Lot 163: 0.31 Ac (see sheet)
65. Lot 164: 0.31 Ac (see sheet)
66. Lot 165: 0.31 Ac (see sheet)
67. Lot 166: 0.31 Ac (see sheet)
68. Lot 167: 0.31 Ac (see sheet)
69. Lot 168: 0.31 Ac (see sheet)
70. Lot 169: 0.31 Ac (see sheet)
71. Lot 170: 0.31 Ac (see sheet)
72. Lot 171: 0.31 Ac (see sheet)
73. Lot 172: 0.31 Ac (see sheet)
74. Lot 173: 0.31 Ac (see sheet)
75. Lot 174: 0.31 Ac (see sheet)
76. Lot 175: 0.31 Ac (see sheet)
77. Lot 176: 0.31 Ac (see sheet)
78. Lot 177: 0.31 Ac (see sheet)
79. Lot 178: 0.31 Ac (see sheet)
80. Lot 179: 0.31 Ac (see sheet)
81. Lot 180: 0.31 Ac (see sheet)
82. Lot 181: 0.31 Ac (see sheet)
83. Lot 182: 0.31 Ac (see sheet)
84. Lot 183: 0.31 Ac (see sheet)
85. Lot 184: 0.31 Ac (see sheet)
86. Lot 185: 0.31 Ac (see sheet)
87. Lot 186: 0.31 Ac (see sheet)
88. Lot 187: 0.31 Ac (see sheet)
89. Lot 188: 0.31 Ac (see sheet)
90. Lot 189: 0.31 Ac (see sheet)
91. Lot 190: 0.31 Ac (see sheet)
92. Lot 191: 0.31 Ac (see sheet)
93. Lot 192: 0.31 Ac (see sheet)
94. Lot 193: 0.31 Ac (see sheet)
95. Lot 194: 0.31 Ac (see sheet)
96. Lot 195: 0.31 Ac (see sheet)
97. Lot 196: 0.31 Ac (see sheet)
98. Lot 197: 0.31 Ac (see sheet)
99. Lot 198: 0.31 Ac (see sheet)
100. Lot 199: 0.31 Ac (see sheet)
101. Lot 200: 0.31 Ac (see sheet)

PERMITS REQUIRED

1. Building and Fire Department
2. Health Department
3. Planning and Zoning Commission
4. Public Works Department
5. Police Department
6. Fire Department
7. Environmental Health Department
8. Department of Public Safety
9. Department of Transportation
10. Department of Public Works
11. Department of Public Safety
12. Department of Public Works
13. Department of Public Safety
14. Department of Public Works
15. Department of Public Safety
16. Department of Public Works
17. Department of Public Safety
18. Department of Public Works
19. Department of Public Safety
20. Department of Public Works
21. Department of Public Safety
22. Department of Public Works
23. Department of Public Safety
24. Department of Public Works
25. Department of Public Safety
26. Department of Public Works
27. Department of Public Safety
28. Department of Public Works
29. Department of Public Safety
30. Department of Public Works
31. Department of Public Safety
32. Department of Public Works
33. Department of Public Safety
34. Department of Public Works
35. Department of Public Safety
36. Department of Public Works
37. Department of Public Safety
38. Department of Public Works
39. Department of Public Safety
40. Department of Public Works
41. Department of Public Safety
42. Department of Public Works
43. Department of Public Safety
44. Department of Public Works
45. Department of Public Safety
46. Department of Public Works
47. Department of Public Safety
48. Department of Public Works
49. Department of Public Safety
50. Department of Public Works
51. Department of Public Safety
52. Department of Public Works
53. Department of Public Safety
54. Department of Public Works
55. Department of Public Safety
56. Department of Public Works
57. Department of Public Safety
58. Department of Public Works
59. Department of Public Safety
60. Department of Public Works
61. Department of Public Safety
62. Department of Public Works
63. Department of Public Safety
64. Department of Public Works
65. Department of Public Safety
66. Department of Public Works
67. Department of Public Safety
68. Department of Public Works
69. Department of Public Safety
70. Department of Public Works
71. Department of Public Safety
72. Department of Public Works
73. Department of Public Safety
74. Department of Public Works
75. Department of Public Safety
76. Department of Public Works
77. Department of Public Safety
78. Department of Public Works
79. Department of Public Safety
80. Department of Public Works
81. Department of Public Safety
82. Department of Public Works
83. Department of Public Safety
84. Department of Public Works
85. Department of Public Safety
86. Department of Public Works
87. Department of Public Safety
88. Department of Public Works
89. Department of Public Safety
90. Department of Public Works
91. Department of Public Safety
92. Department of Public Works
93. Department of Public Safety
94. Department of Public Works
95. Department of Public Safety
96. Department of Public Works
97. Department of Public Safety
98. Department of Public Works
99. Department of Public Safety
100. Department of Public Works

PERMITS REQUIRED

1. Building and Fire Department

2. Health Department

3. Planning and Zoning Commission

4. Public Works Department

5. Police Department

6. Fire Department

7. Environmental Health Department

8. Department of Public Safety

9. Department of Transportation

10. Department of Public Works

11. Department of Public Safety

12. Department of Public Works

13. Department of Public Safety

14. Department of Public Works

15. Department of Public Safety

16. Department of Public Works

17. Department of Public Safety

18. Department of Public Works

19. Department of Public Safety

20. Department of Public Works

21. Department of Public Safety

22. Department of Public Works

23. Department of Public Safety

24. Department of Public Works

25. Department of Public Safety

26. Department of Public Works

27. Department of Public Safety

28. Department of Public Works

29. Department of Public Safety

30. Department of Public Works

31. Department of Public Safety

32. Department of Public Works

33. Department of Public Safety

34. Department of Public Works

35. Department of Public Safety

36. Department of Public Works

37. Department of Public Safety

38. Department of Public Works

39. Department of Public Safety

40. Department of Public Works

41. Department of Public Safety

42. Department of Public Works

43. Department of Public Safety

44. Department of Public Works

45. Department of Public Safety

46. Department of Public Works

47. Department of Public Safety

48. Department of Public Works

49. Department of Public Safety

50. Department of Public Works

51. Department of Public Safety

52. Department of Public Works

53. Department of Public Safety

54. Department of Public Works

55. Department of Public Safety

56. Department of Public Works

57. Department of Public Safety

58. Department of Public Works

59. Department of Public Safety

60. Department of Public Works

61. Department of Public Safety

62. Department of Public Works

63. Department of Public Safety

64. Department of Public Works

65. Department of Public Safety

66. Department of Public Works

67. Department of Public Safety

68. Department of Public Works

69. Department of Public Safety

70. Department of Public Works

71. Department of Public Safety

72. Department of Public Works

73. Department of Public Safety

74. Department of Public Works

75. Department of Public Safety

76. Department of Public Works

77. Department of Public Safety

78. Department of Public Works

79. Department of Public Safety

80. Department of Public Works

81. Department of Public Safety

82. Department of Public Works

83. Department of Public Safety

84. Department of Public Works

85. Department of Public Safety

86. Department of Public Works

87. Department of Public Safety

88. Department of Public Works

89. Department of Public Safety

90. Department of Public Works

91. Department of Public Safety

92. Department of Public Works

93. Department of Public Safety

94. Department of Public Works

95. Department of Public Safety

96. Department of Public Works

97. Department of Public Safety

98. Department of Public Works

99. Department of Public Safety

100. Department of Public Works

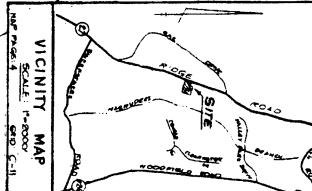
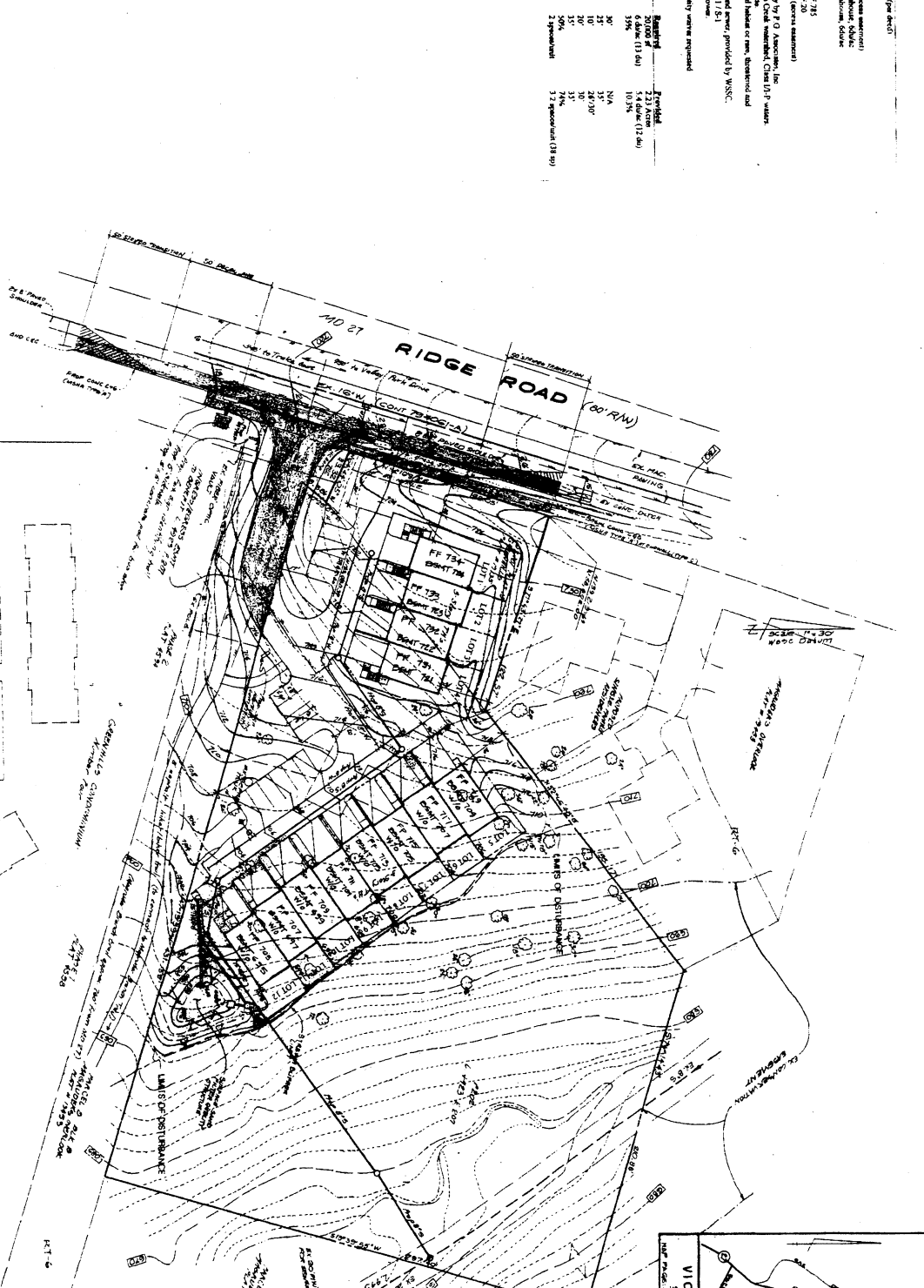
PREPARED FOR:

Mr. [Name]

1234 Main Street

Rockville, MD 20850

(301) 916-9542



ENGINEER'S CERTIFICATE

I hereby certify that the boundary and topographic information shown herein is correct, based upon the source noted herein.

[Signature]

DATE: [Date]

[Signature]

DATE: [Date]

BOUNDARY & TOPOGRAPHIC INFORMATION BY FIELD SURVEY: P.G. ASSOCIATES, INC.

PRELIMINARY PLAN / SITE PLAN

LOT 101 PLAT 13 GREEN HILLS PARCEL 202 21 LOOKOUT

8 PARCEL 8 BLOCK B MAGRUDER'S OVERLOOK

GREEN HILLS

DAMASCUS ELECTON DISTRICT 12

MONTGOMERY COUNTY, MARYLAND

P.G. ASSOCIATES, INC.

CIVIL ENGINEERS * SURVEYORS * LAND PLANNERS

354-A HUNGERFORD DRIVE

ROCKVILLE, MARYLAND 20850

PHONE (301) 309-1361

NO.	DATE	DESCRIPTION	BY