

Item # 7



THE MARYLAND-NATIONAL CAPITAL PARK AND PLANNING COMMISSION

M E M O R A N D U M

DATE: January 03, 2003
TO: Montgomery County Planning Board
FROM: A. Malcolm Shaneman
Development Review Division
(301) 495-4587
SUBJECT: Informational Maps for Subdivision Items on the
Planning Board's Agenda for January 09, 2003.

Attached are copies of plan drawings for Items #07, #08, #09, #10. These subdivision items are scheduled for Planning Board consideration on January 09, 2003. The items are further identified as follows:

Agenda Item #07 - Preliminary Plan 1-01030, Clarksburg
Village & 1-93007, Nanna Property

Agenda Item #08 - Preliminary Plan 1-02119
Potomac Crest

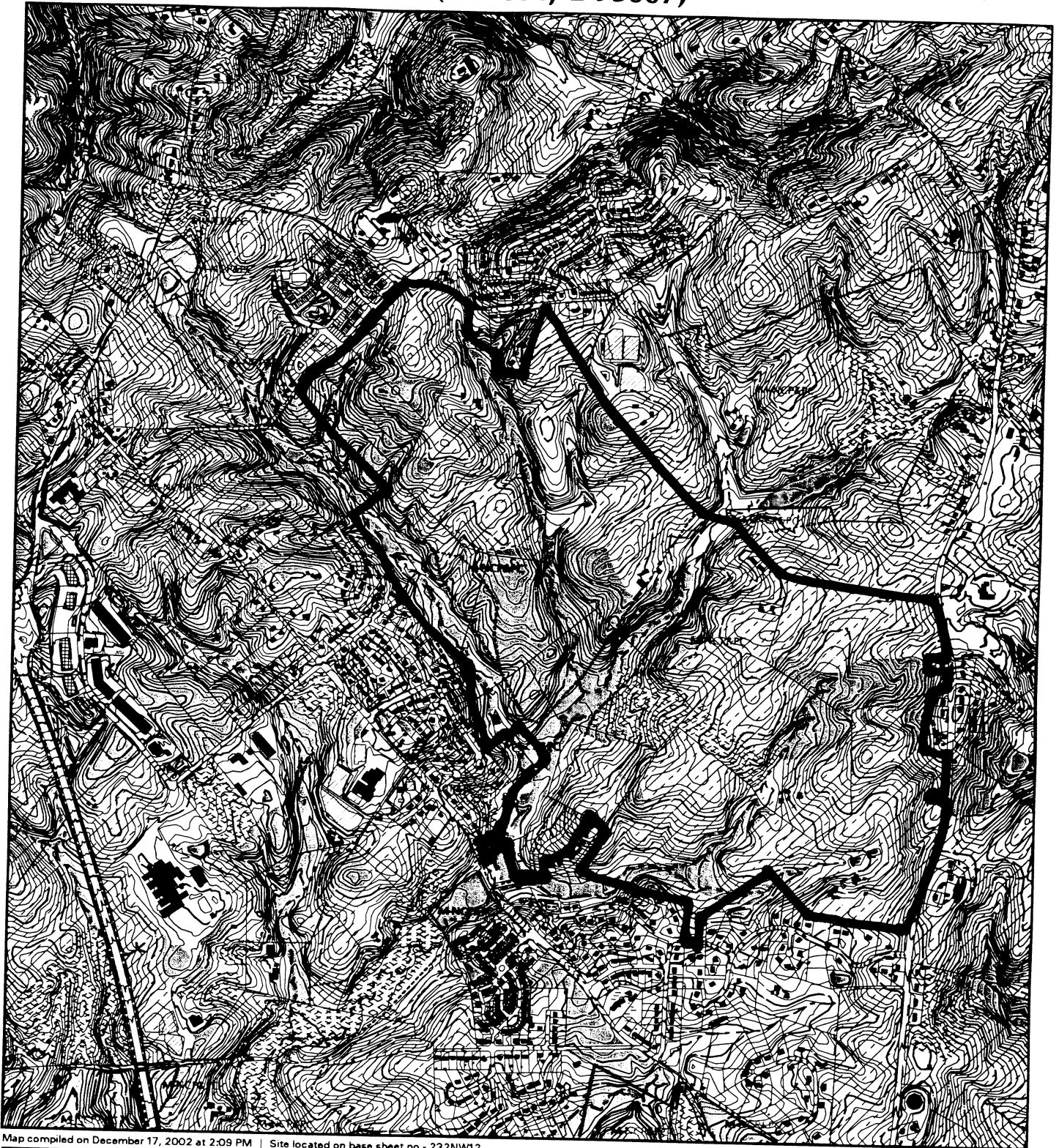
Agenda Item #09 - Preliminary Plan 1-03023
Germantown Station

Agenda Item #10 - Preliminary Plan 1-02081
Brooks Property

Attachment

VICINITY MAP FOR

CLARKSBURG VILLAGE (1-01030, 1-93007)



Map compiled on December 17, 2002 at 2:09 PM | Site located on base sheet no - 232NW12

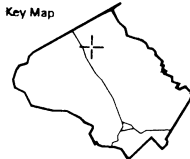
NOTICE

The planimetric, property, and topographic information shown on this map is based on copyrighted Map Products from the Montgomery County Department of Park and Planning of the Maryland -National Capital Park and Planning Commission, and may not be copied or reproduced without written permission from M-NCPPC.

Property lines are compiled by adjusting the property lines to topography created from aerial photography and should not be interpreted as actual field surveys. Planimetric features were compiled from 1:14400 scale aerial photography using stereo photogrammetric methods.

This map is created from a variety of data sources, and may not reflect the most current conditions in any one location and may not be completely accurate or up to date. All map features are approximately within five feet of their true location. This map may not be the same as a map of the same area plotted at an earlier time as the data is continuously updated. Use of this map, other than for general planning purposes is not recommended. - Copyright 1998

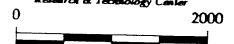
Key Map



N



Research & Technology Center



1 : 24000

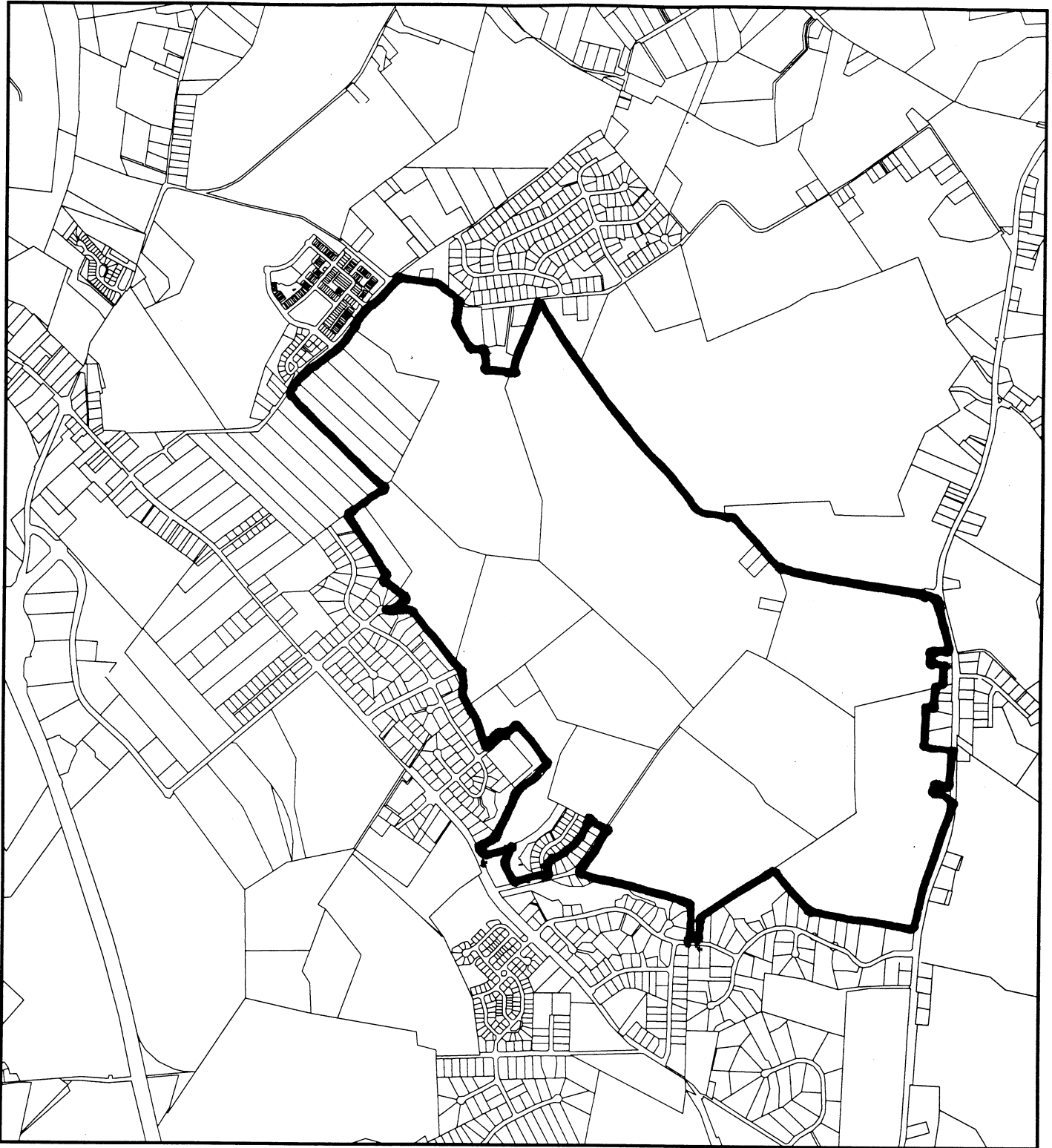
M-NCPPC

MONTGOMERY COUNTY DEPARTMENT OF PARK AND PLANNING
THE MARYLAND-NATIONAL CAPITAL PARK AND PLANNING COMMISSION

8787 Georgia Avenue - Silver Spring, Maryland 20910-3760

VICINITY MAP FOR

CLARKSBURG VILLAGE (1-01030, 1-93007)



Map compiled on December 17, 2002 at 1:45 PM | Site located on base sheet no - 232NW12

NOTICE

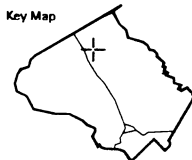
The planimetric, property, and topographic information shown on this map is based on copyrighted Map Products from the Montgomery County Department of Park and Planning of the Maryland - National Capital Park and Planning Commission, and may not be copied or reproduced without written permission from M-NCPPC.

Property lines are compiled by adjusting the property lines to topography created from aerial photography and should not be interpreted as actual field surveys. Planimetric features were compiled from 1:14400 scale aerial photography using stereo photogrammetric methods.

This map is created from a variety of data sources, and may not reflect the most current conditions in any one location and may not be completely accurate or up to date. All map features are approximately within five feet of their true location. This map may not be the same as a map of the same area plotted at an earlier time as the data is continuously updated. Use of this map, other than for general planning purposes is not recommended. - Copyright 1998

MONTGOMERY COUNTY DEPARTMENT OF PARK AND PLANNING
THE MARYLAND-NATIONAL CAPITAL PARK AND PLANNING COMMISSION
8787 Georgia Avenue - Silver Spring, Maryland 20910-3760

Key Map



N



Research & Technology Center



1 : 24000

