



THE MARYLAND-NATIONAL CAPITAL PARK AND PLANNING COMMISSION

M E M O R A N D U M

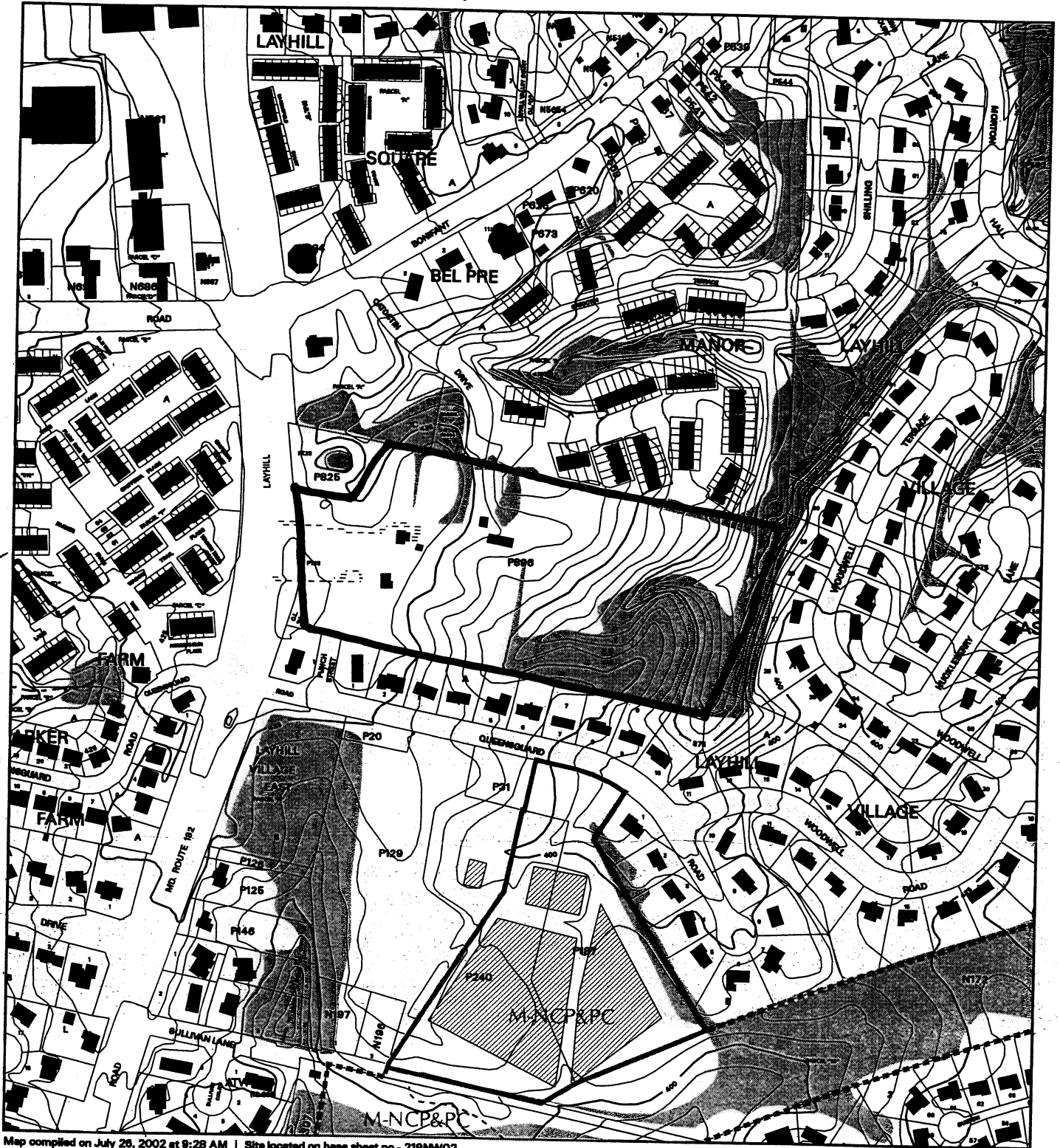
DATE: March 21, 2003
TO: Montgomery County Planning Board
FROM: A. Malcolm Shaneman
Development Review Division
(301) 495-4587
SUBJECT: Informational Maps for Subdivision Items on the
Planning Board's Agenda for March 28, 2003.

Attached are copies of plan drawings for Items #04, #06, #08 and #09. These subdivision items are scheduled for Planning Board consideration on March 28, 2003. The items are further identified as follows:

- Agenda Item #04 - Preliminary Plan 1-03022
Norwood Overlook
- Agenda Item #06 - Preliminary Plan 1-02086
Layhill Village
- Agenda Item #08 - Preliminary Plan 1-03031
Cabin John Park
- Agenda Item #09 - Preliminary Plan 1-91099A
White Oak Property

Attachment

VICINITY MAP FOR
LAYHILL VILLAGE (1-02086)



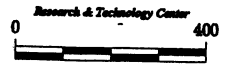
Map compiled on July 26, 2002 at 9:28 AM | Site located on base sheet no - 219NW02

NOTICE

The planimetric, property, and topographic information shown on this map is based on copyrighted Map Products from the Montgomery County Department of Park and Planning of the Maryland-National Capital Park and Planning Commission, and may not be copied or reproduced without written permission from M-NCP&PC.

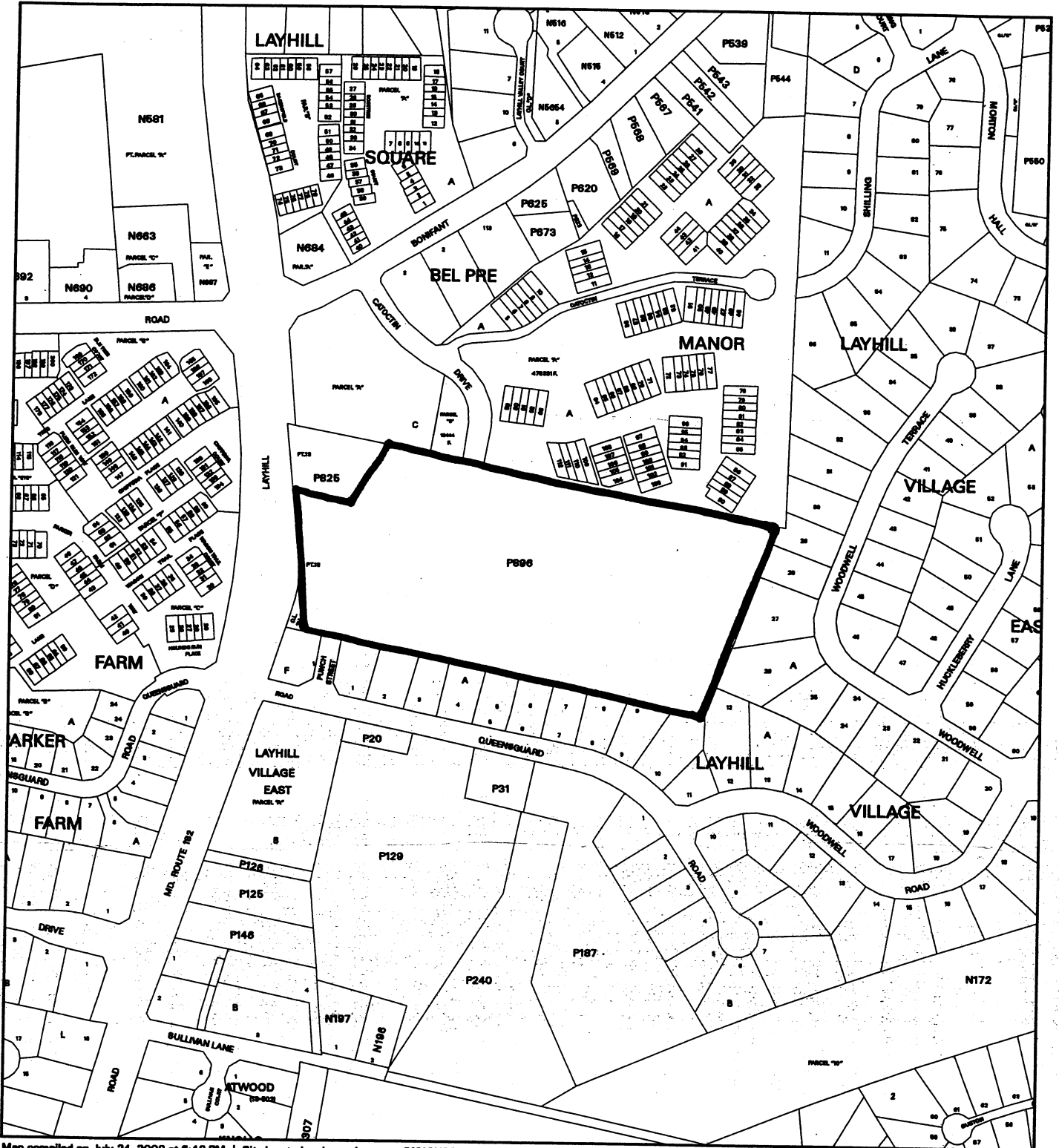
Property lines are compiled by adjusting the property lines to topography created from aerial photography and should not be interpreted as actual field surveys. Planimetric features were compiled from 1:14400 scale aerial photography using stereo photogrammetric methods.

This map is created from a variety of data sources, and may not reflect the most current conditions in any one location and may not be completely accurate or up to date. All map features are approximately within five feet of their true location. This map may not be the same as a map of the same area plotted at an earlier time as the data is continuously updated. Use of this map, other than for general planning purposes is not recommended. - Copyright 1998



1 : 4800

VICINITY MAP FOR
LAYHILL VILLAGE (1-02086)



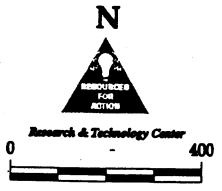
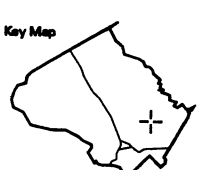
Map compiled on July 24, 2002 at 6:42 PM | Site located on base sheet no - 219NW02

NOTICE

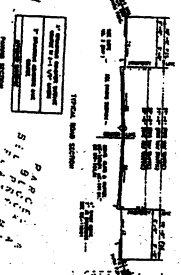
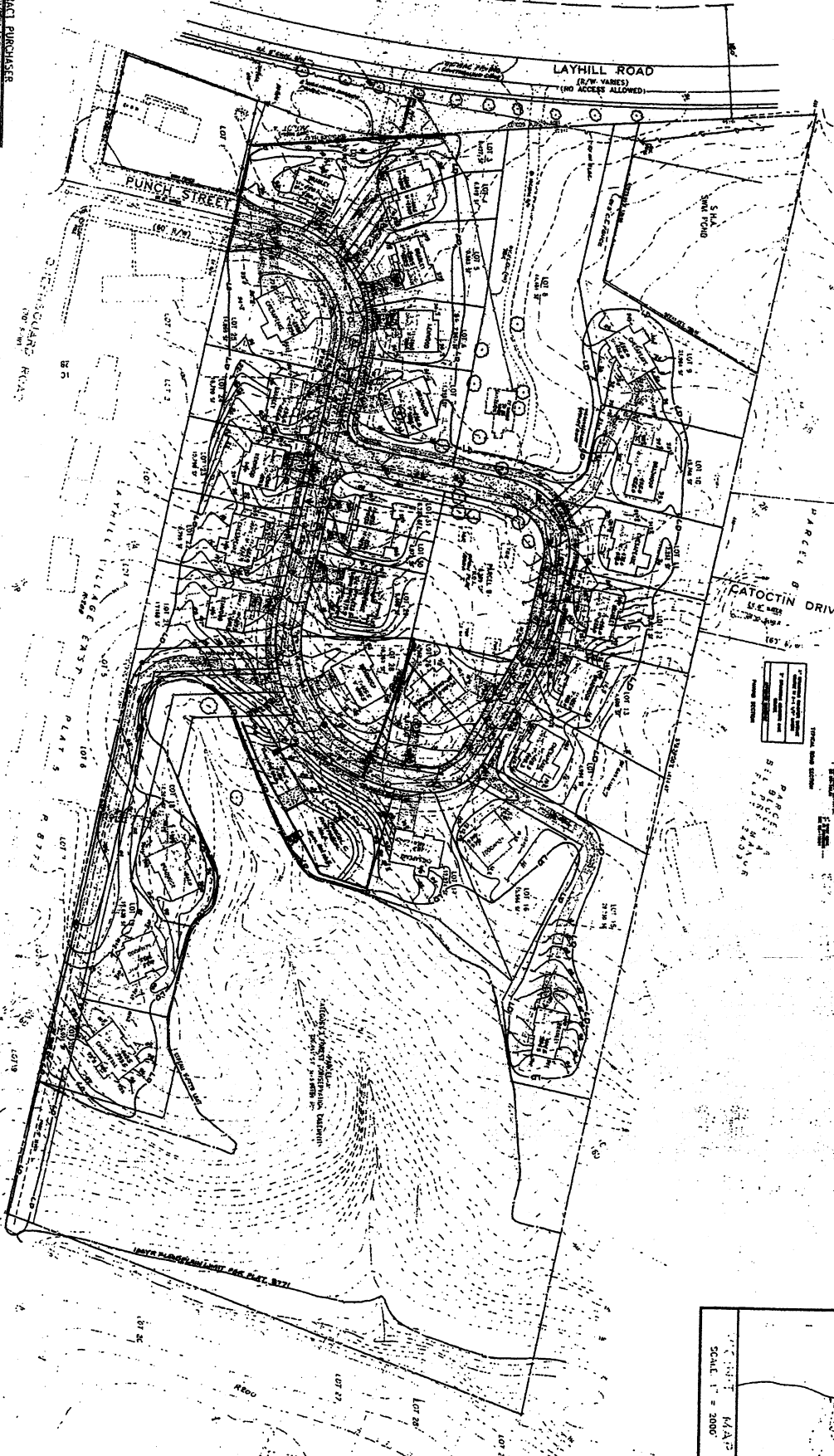
The planimetric, property, and topographic information shown on this map is based on copyrighted Map Products from the Montgomery County Department of Park and Planning of the Maryland-National Capital Park and Planning Commission, and may not be copied or reproduced without written permission from M-NCPPC.

Property lines are compiled by adjusting the property lines to topography created from aerial photography and should not be interpreted as actual field surveys. Planimetric features were compiled from 1:14400 scale aerial photography using stereo photogrammetric methods.

This map is created from a variety of data sources, and may not reflect the most current conditions in any one location and may not be completely accurate or up to date. All map features are approximately within five feet of their true location. This map may not be the same as a map of the same area plotted at an earlier time as the data is continuously updated. Use of this map, other than for general planning purposes is not recommended. - Copyright 1998



CONTRACT PURCHASER
 THE HOME DEPOT STORES, INC.
 2000 W. WASHINGTON AVENUE
 ANN ARBOR, MI 48106



ENGINEER'S CERTIFICATE
 I, the undersigned, being a duly Licensed Professional Engineer in the State of Michigan, do hereby certify that the above is a true and correct copy of the original as shown to me by the contractor.

2/12/20
 [Signature]

PRELIMINARY SITE PLAN
 LOTS 2 THRU 31 - BLOCK F
 LAYHILL VILLAGE EAST
 RECORDED IN LIBER 692 AT FOLIO 257

4000 W. WASHINGTON AVENUE, ANN ARBOR, MI 48106
 4000 W. WASHINGTON AVENUE, ANN ARBOR, MI 48106

P.G. ASSOCIATES, INC.
 CIVIL ENGINEERS * SURVEYORS * LAND PLANNERS

