



Item #7

THE MARYLAND-NATIONAL CAPITAL PARK AND PLANNING COMMISSION

M E M O R A N D U M

DATE: June 20, 2003
TO: Montgomery County Planning Board
FROM: A. Malcolm Shaneman
Development Review Division
(301) 495-4587
SUBJECT: Informational Maps for Subdivision Items on the
Planning Board's Agenda for June 26, 2003.

Attached are copies of plan drawings for Item #06, #07, and #08. These subdivision items are scheduled for Planning Board consideration on June 26, 2003. The items are further identified as follows:

Agenda Item #06 - Preliminary Plan 1-03063
Tregoning/Dameron Properties

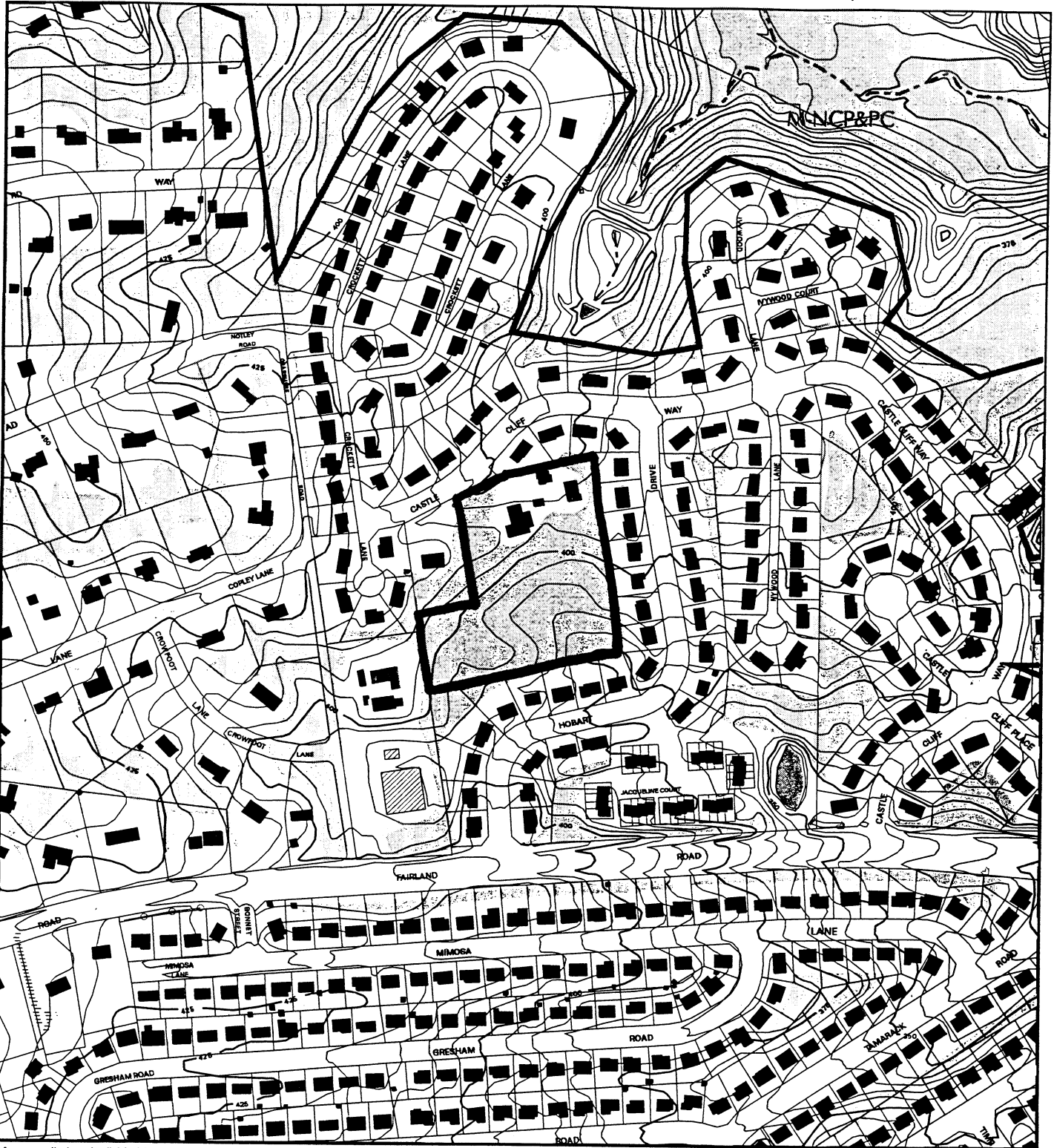
Agenda Item #07 - Preliminary Plan 1-03074
Landfare

Agenda Item #08 - Preliminary Plan 1-03087
Homecrest

Attachment

VICINITY MAP FOR

LANDFARE, PROPOSED LOTS 22-25, BLK. A (1-03074)



Map compiled on April 28, 2003 at 11:19 AM | Site located on base sheet no - 218NE02

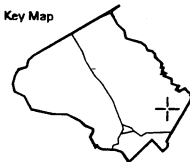
NOTICE

The planimetric, property, and topographic information shown on this map is based on copyrighted Map Products from the Montgomery County Department of Park and Planning of the Maryland -National Capital Park and Planning Commission, and may not be copied or reproduced without written permission from M-NCPPC.

Property lines are compiled by adjusting the property lines to topography created from aerial photography and should not be interpreted as actual field surveys. Planimetric features were compiled from 1:14400 scale aerial photography using stereo photogrammetric methods.

This map is created from a variety of data sources, and may not reflect the most current conditions in any one location and may not be completely accurate or up to date. All map features are approximately within five feet of their true location. This map may not be the same as a map of the same area plotted at an earlier time as the data is continuously updated. Use of this map, other than for general planning purposes is not recommended. - Copyright 1998

Key Map



1 : 4800

