



THE MARYLAND-NATIONAL CAPITAL PARK AND PLANNING COMMISSION

MEMORANDUM

DATE: July 25, 2003
TO: Montgomery County Planning Board
FROM: A. Malcolm Shaneman
Development Review Division
(301) 495-4587
SUBJECT: Informational Maps for Subdivision Items on the
Planning Board's Agenda for July 31, 2003.

Attached are copies of plan drawings for Items #10, #11, #12, #13, and #14. These subdivision items are scheduled for Planning Board consideration on July 31, 2003. The items are further identified as follows:

Agenda Item #10 - Preliminary Plan 1-03107
Becker Property

Agenda Item #11 - Preliminary Plan 1-03099
American Plant Food

Agenda Item #12 - Pre-Preliminary Plan 7-03057
Ridgewood Village

Agenda Item #13 - Preliminary Plan 1-03073
Smith Village

Agenda Item #14 - Preliminary Plan 1-03093
Gray Estates

Attachment

VICINITY MAP FOR
BECKER PROPERTY (1-03107)



Map compiled on July 02, 2003 at 9:45 AM | Site located on base sheet no - 226NW11

NOTICE

The planimetric, property, and topographic information shown on this map is based on copyrighted Map Products from the Montgomery County Department of Park and Planning of the Maryland-National Capital Park and Planning Commission, and may not be copied or reproduced without written permission from M-NCPPC.

Property lines are compiled by adjusting the property lines to topography created from aerial photography and should not be interpreted as actual field surveys. Planimetric features were compiled from 1:14400 scale aerial photography using stereo photogrammetric methods.

This map is created from a variety of data sources, and may not reflect the most current conditions in any one location and may not be completely accurate or up to date. All map features are approximately within five feet of their true location. This map may not be the same as a map of the same area plotted at an earlier time as the data is continuously updated. Use of this map, other than for general planning purposes is not recommended. - Copyright 1998

Key Map

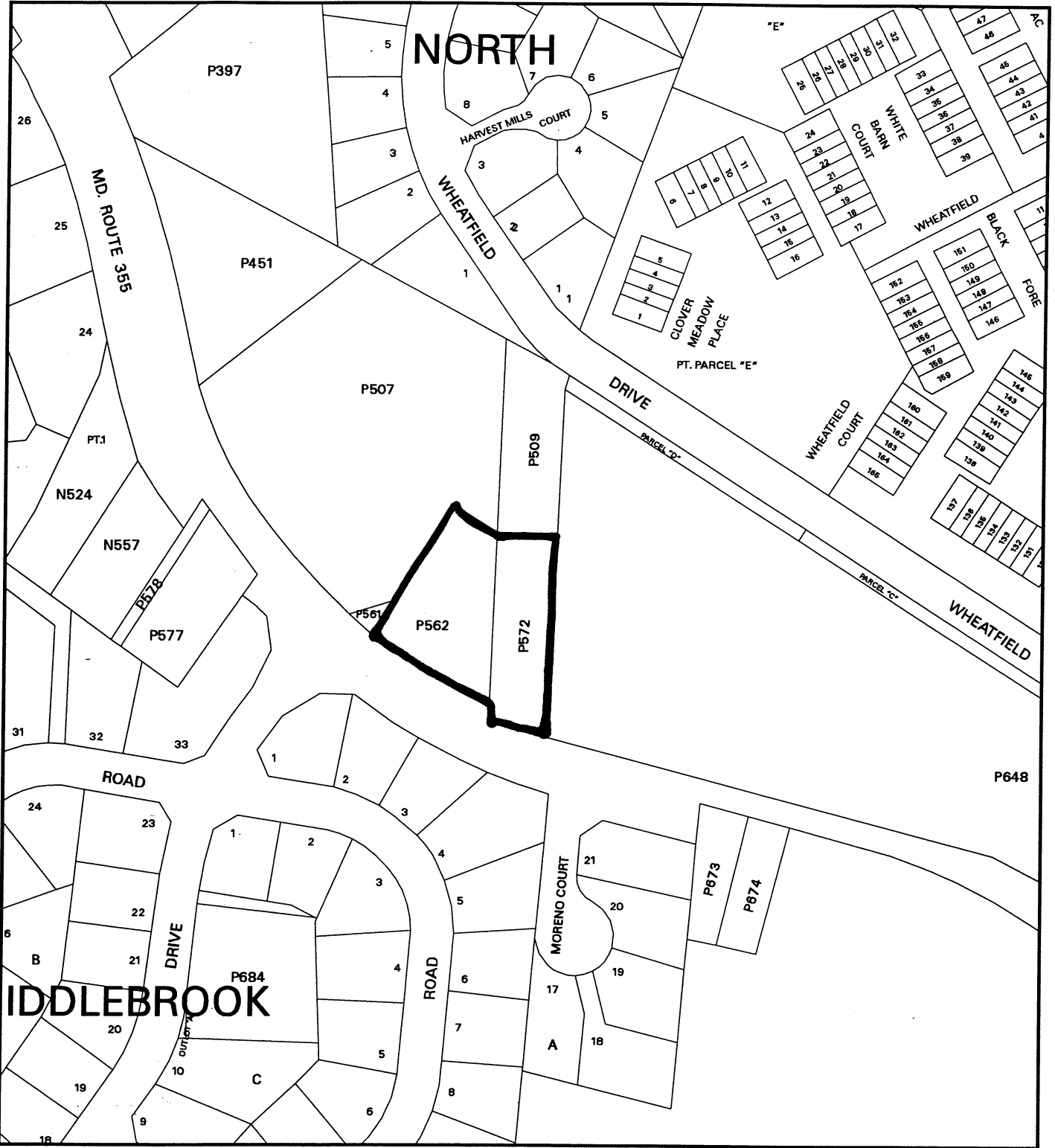


Research & Technology Center



1 : 2400

BECKER PROPERTY (1-03107)



Map compiled on February 25, 2000 at 6:50 AM | Site located on base sheet no - 226NW11

NOTICE

The planimetric, property, and topographic information shown on this map is based on copyrighted Map Products from the Montgomery County Department of Park and Planning of the Maryland -National Capital Park and Planning Commission, and may not be copied or reproduced without written permission from M-NCPPC.

Property lines are compiled by adjusting the property lines to topography created from aerial photography and should not be interpreted as actual field surveys. Planimetric features were compiled from 1:14400 scale aerial photography using stereo photogrammetric methods.

This map is created from a variety of data sources, and may not reflect the most current conditions in any one location and may not be completely accurate or up to date. All map features are approximately within five feet of their true location. This map may not be the same as a map of the same area plotted at an earlier time as the data is continuously updated. Use of this map, other than for general planning purposes is not recommended. - Copyright 1998

Key Map



1 : 2400

