

# 9

10-23-03



MONTGOMERY COUNTY DEPARTMENT OF PARK & PLANNING

THE MARYLAND-NATIONAL CAPITAL  
PARK AND PLANNING COMMISSION

8787 Georgia Avenue  
Silver Spring, Maryland 20910-3760

October 17, 2003

MEMORANDUM

TO: Malcolm Shaneman, Supervisor  
Development Review Division

VIA: Ronald C. Welke, Supervisor  
Transportation Planning Division

FROM: Cherian Eapen, Planner/Coordinator  
Transportation Planning Division

SUBJECT: Preliminary Plan no. 1-04006  
John Deere Acres, Lot 1  
John Deere Landscapes, Inc.  
28400 Ridge Road, Damascus  
Goshen (Rural) Policy Area

---

This memorandum presents Transportation Planning staff's Adequate Public Facilities (APF) Ordinance review of the above Preliminary Plan for the addition of a 4,000-square-foot storage building at an existing retail horticulture nursery and landscaping business located at 28400 Ridge Road (MD 27) in Damascus. The property is currently zoned RDT.

**RECOMMENDATIONS**

Transportation Planning staff recommends the following conditions as part of the transportation-related requirements to approve this Preliminary Plan:

1. Limit the size of the proposed storage building to 4,000 square-feet.
2. Dedicate adequate right-of-way along Ridge Road (MD 27) to provide 40 feet of right-of-way from its centerline.

Item #9



THE MARYLAND-NATIONAL CAPITAL PARK AND PLANNING COMMISSION

M E M O R A N D U M

**DATE:** October 17, 2003  
**TO:** Montgomery County Planning Board  
**FROM:** A. Malcolm Shaneman  
Development Review Division  
(301) 495-4587  
**SUBJECT:** Informational Maps for Subdivision Items on the  
Planning Board's Agenda for October 23, 2003.

---

Attached are copies of plan drawings for Item #07, #08, and #09. These subdivision items are scheduled for Planning Board consideration on October 23, 2003. The items are further identified as follows:

Agenda Item #07 -Preliminary Plan 1-04013  
B.F. Leighton's Add. To Woodside

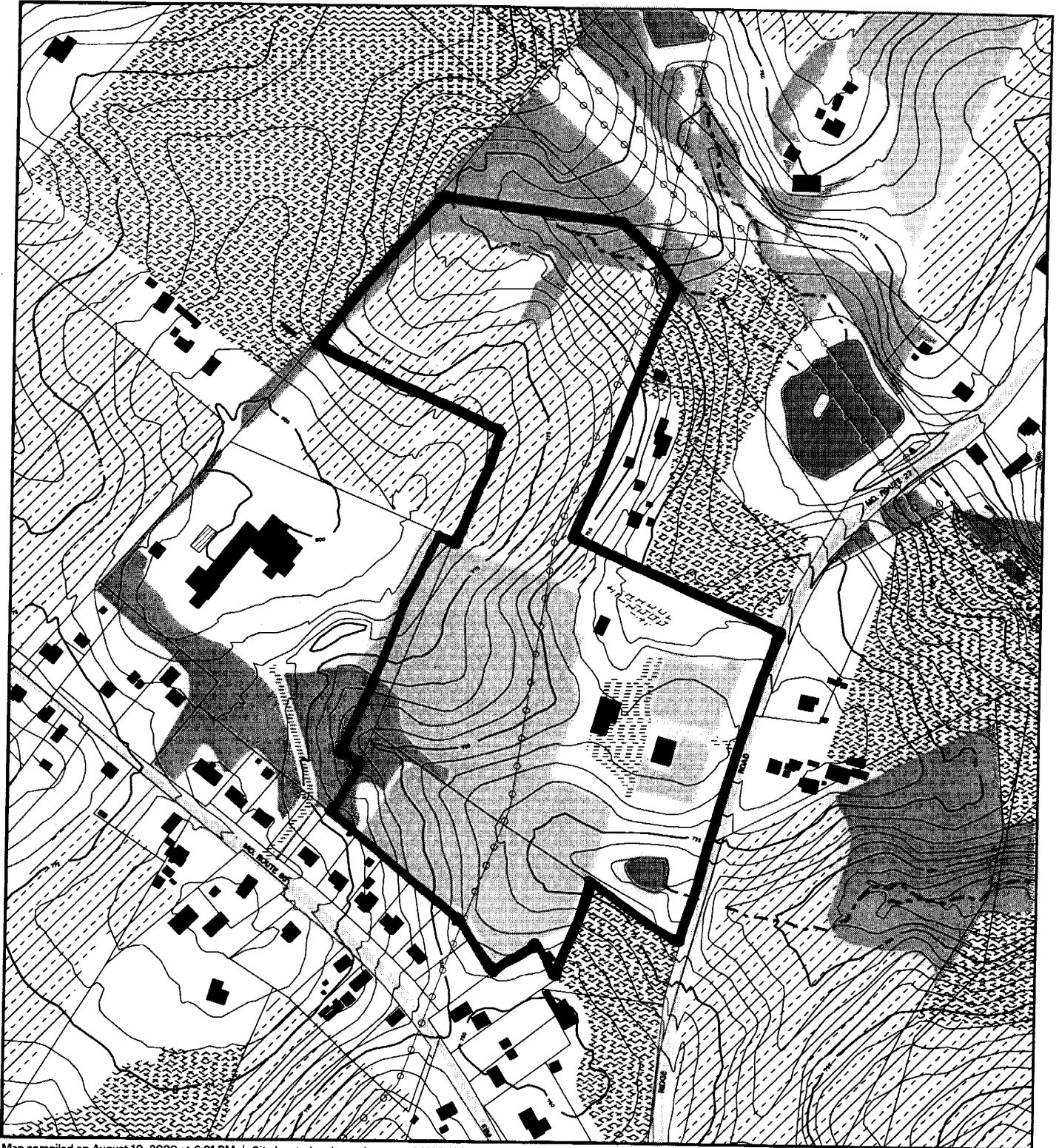
Agenda Item #08 -Preliminary Plan 1-01066  
North Glen Hills

Agenda Item #09 -Preliminary Plan 1-04006  
John Deere Acres

Attachment

VICINITY MAP FOR

# LOT 1, JOHN DEERE ACRES (1-04006)



Map compiled on August 10, 2000 at 6:01 PM | Site located on base sheet no. -240NW09

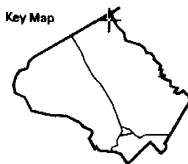
## NOTICE

The planimetric, property, and topographic information shown on this map is based on copyrighted Map Products from the Montgomery County Department of Park and Planning of the Maryland-National Capital Park and Planning Commission, and may not be copied or reproduced without written permission from M-NCPPC.

Property lines are compiled by adjusting the property lines to topography created from aerial photography and should not be interpreted as actual field surveys. Planimetric features were compiled from 1:14400 scale aerial photography using stereo photogrammetric methods.

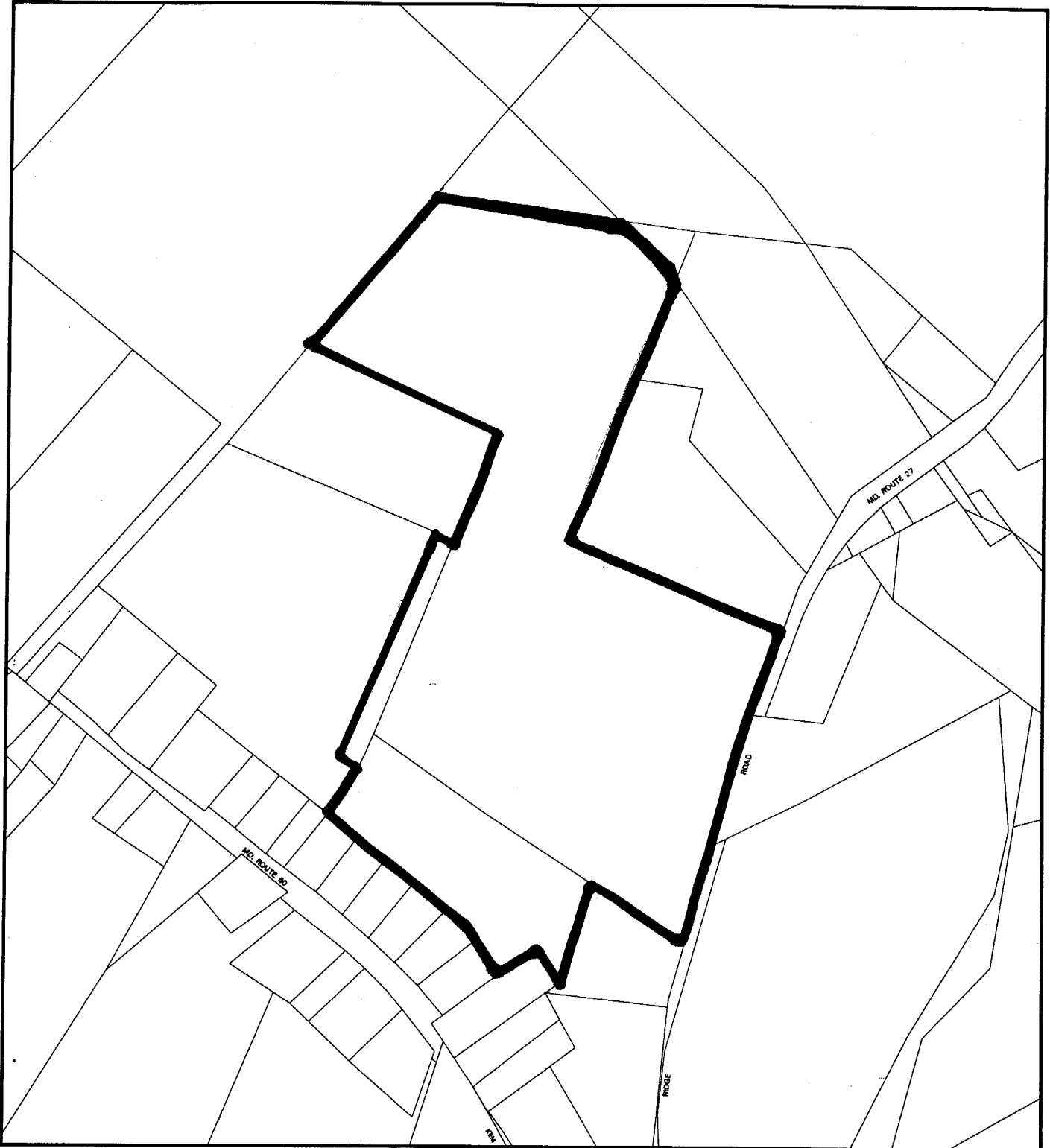
This map is created from a variety of data sources, and may not reflect the most current conditions in any one location and may not be completely accurate or up to date. All map features are approximately within five feet of their true location. This map may not be the same as a map of the same area plotted at an earlier time as the data is continuously updated. Use of this map, other than for general planning purposes is not recommended. - Copyright 1998

Key Map



VICINITY MAP FOR

# LOT 1, JOHN DEERE ACRES (1-04006)



Map compiled on August 10, 2000 at 5:54 PM | Site located on base sheet no - 240NW09

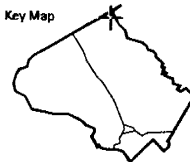
### NOTICE

The planimetric, property, and topographic information shown on this map is based on copyrighted Map Products from the Montgomery County Department of Park and Planning of the Maryland -National Capital Park and Planning Commission, and may not be copied or reproduced without written permission from M-NCPPC.

Property lines are compiled by adjusting the property lines to topography created from aerial photography and should not be interpreted as actual field surveys. Planimetric features were compiled from 1:14400 scale aerial photography using stereo photogrammetric methods.

This map is created from a variety of data sources, and may not reflect the most current conditions in any one location and may not be completely accurate or up to date. All map features are approximately within five feet of their true location. This map may not be the same as a map of the same area plotted at an earlier time as the data is continuously updated. Use of this map, other than for general planning purposes is not recommended. - Copyright 1998

Key Map



1 : 4800

