MEMORANDUM

DATE: January 16, 2004

TO: Montgomery County Planning Board

FROM: A. Malcolm Shaneman, Supervisor  
Development Review Division  
(301) 495-4587

SUBJECT: Informational Maps for Subdivision Items on the Planning Board's  
Agenda for January 22, 2004

---

Attached are copies of plan drawings for items # 1, #2, #3, #4, #5, and #6. These subdivision items are scheduled for Planning Board consideration on January 22, 2004. The items are further identified as follows:

Agenda Item #1 – Preliminary 1-85077R  
Rusty Acres

Agenda Item #2 – Preliminary Plan No. 1-99059  
Callithea Ridge

Agenda Item #3 – Preliminary Plan No. 1-04023  
Schmeisser Property

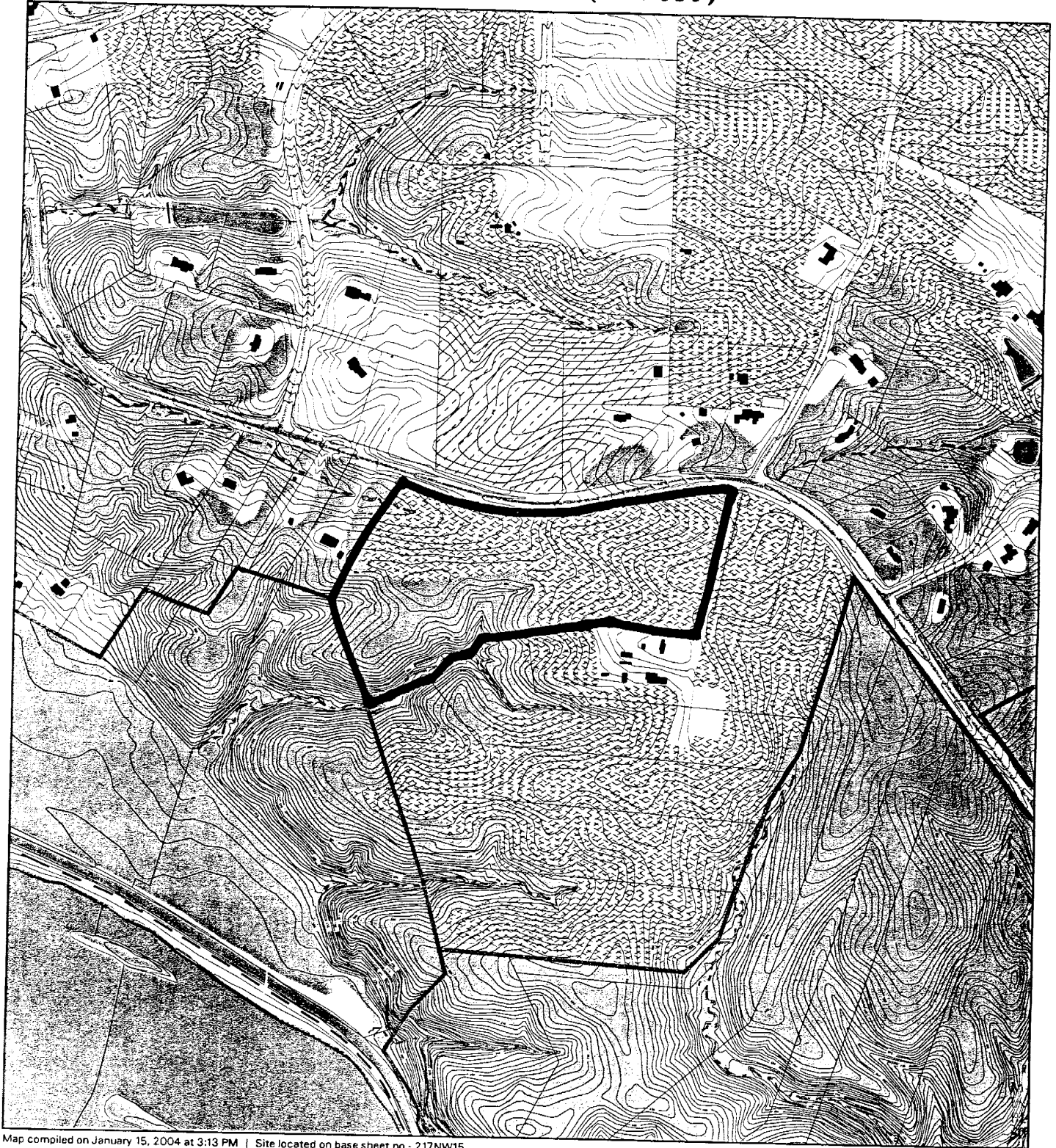
Agenda Item #4 – Preliminary Plan No. 1-03092  
Sandy Spring Friends School

Agenda Item #5 – Preliminary Plan No. 1-04001  
Edwards Property

Agenda Item #6 – Preliminary Plan No. 1-04005  
Greenacres

Attachment

# CALLITHEA RIDGE RIVER ROAD (1-99059)



Map compiled on January 15, 2004 at 3:13 PM | Site located on base sheet no - 217NW15

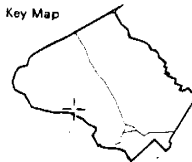
## NOTICE

The planimetric, property, and topographic information shown on this map is based on copyrighted Map Products from the Montgomery County Department of Park and Planning of the Maryland-National Capital Park and Planning Commission, and may not be copied or reproduced without written permission from M-NCPPC.

Property lines are compiled by adjusting the property lines to topography created from aerial photography and should not be interpreted as actual field surveys. Planimetric features were compiled from 1:14400 scale aerial photography using stereo photogrammetric methods.

This map is created from a variety of data sources, and may not reflect the most current conditions in any one location and may not be completely accurate or up to date. All map features are approximately within five feet of their true location. This map may not be the same as a map of the same area plotted at an earlier time as the data is continuously updated. Use of this map, other than for general planning purposes is not recommended. - Copyright 1998

Key Map



N

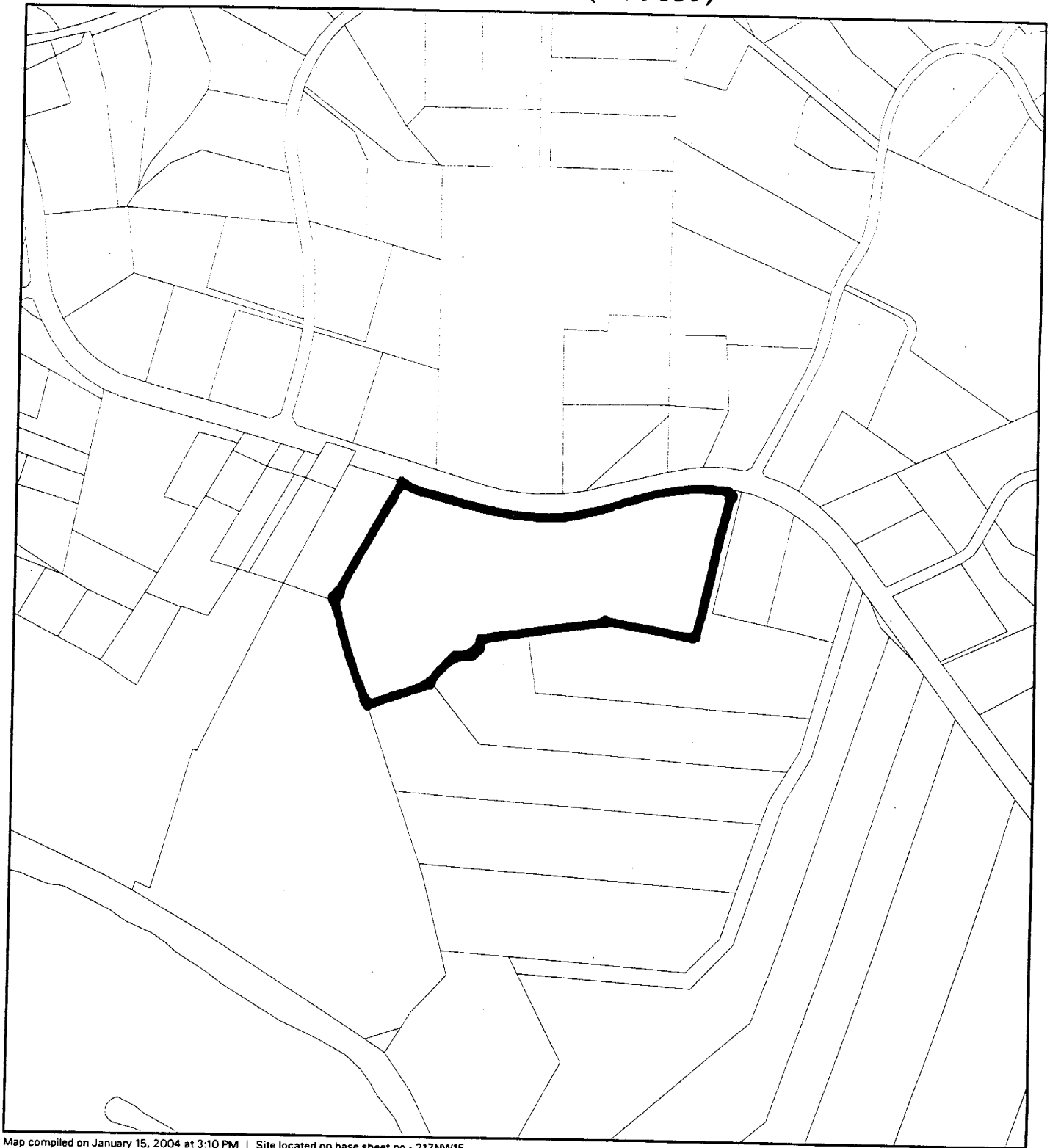


Research & Technology Center



1 : 9600

# CALLITHEA RIDGE RIVER ROAD (1-99059)



Map compiled on January 15, 2004 at 3:10 PM | Site located on base sheet no - 217NW15

## NOTICE

The planimetric, property, and topographic information shown on this map is based on copyrighted Map Products from the Montgomery County Department of Park and Planning of the Maryland -National Capital Park and Planning Commission, and may not be copied or reproduced without written permission from M-NCPPC.

Property lines are compiled by adjusting the property lines to topography created from aerial photography and should not be interpreted as actual field surveys. Planimetric features were compiled from 1:14400 scale aerial photography using stereo photogrammetric methods.

This map is created from a variety of data sources, and may not reflect the most current conditions in any one location and may not be completely accurate or up to date. All map features are approximately within five feet of their true location. This map may not be the same as a map of the same area plotted at an earlier time as the data is continuously updated. Use of this map, other than for general planning purposes is not recommended. - Copyright 1998



1 : 9600

