

Item # 8

M-NCPPC



MONTGOMERY COUNTY DEPARTMENT OF PARK AND PLANNING

THE MARYLAND-NATIONAL CAPITAL
PARK AND PLANNING COMMISSION

8787 Georgia Avenue
Silver Spring, Maryland 20910-3760
301-495-4500, www.mncppc.org

M E M O R A N D U M

DATE: February 6, 2004
TO: Montgomery County Planning Board
FROM: A. Malcolm Shaneman
Development Review Division
(301) 495-4587
SUBJECT: Informational Maps for Subdivision Items on the
Planning Board's Agenda for February 12, 2004.

Attached are copies of plan drawings for Item #08, #09 and #10. These subdivision items are scheduled for Planning Board consideration on February 12, 2004. The items are further identified as follows:

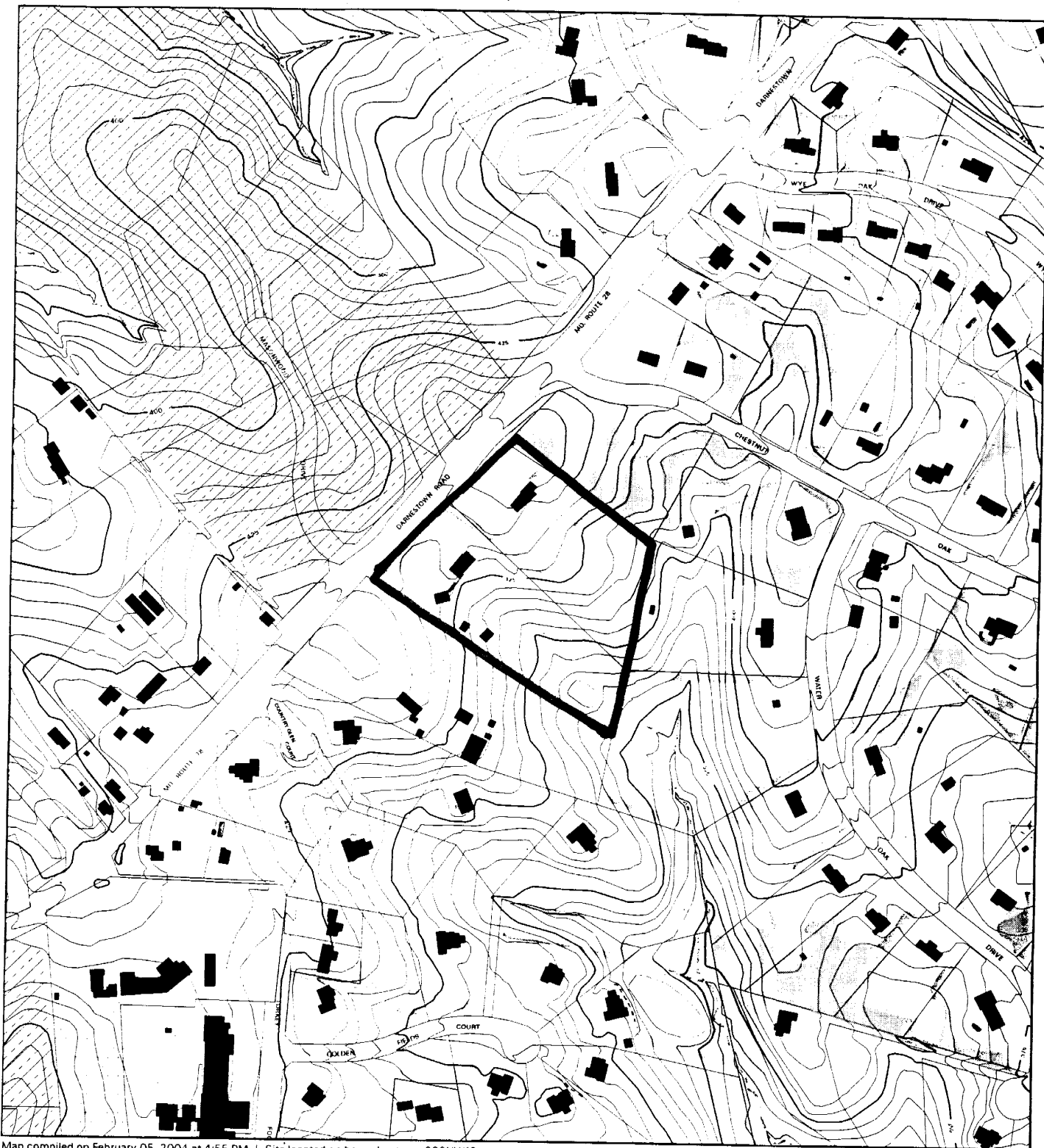
Agenda Item #08 -Preliminary Plan 1-03080
Ancient Oak West

Agenda Item #09 -Preliminary Plan 1-03085
Kingsview Knolls

Agenda Item #10 -Preliminary Plan 1-03047
Wilton Oaks

Attachment

ANCIENT OAK WEST (1-03080)



Map compiled on February 05, 2004 at 4:55 PM | Site located on base sheet no - 220NW13

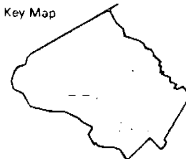
NOTICE

The planimetric, property, and topographic information shown on this map is based on copyrighted Map Products from the Montgomery County Department of Park and Planning of the Maryland - National Capital Park and Planning Commission, and may not be copied or reproduced without written permission from M-NCPPC.

Property lines are compiled by adjusting the property lines to topography created from aerial photography and should not be interpreted as actual field surveys. Planimetric features were compiled from 1:14400 scale aerial photography using stereo photogrammetric methods.

This map is created from a variety of data sources, and may not reflect the most current conditions in any one location and may not be completely accurate or up to date. All map features are approximately within five feet of their true location. This map may not be the same as a map of the same area plotted at an earlier time as the data is continuously updated. Use of this map, other than for general planning purposes is not recommended. - Copyright 1998

Key Map



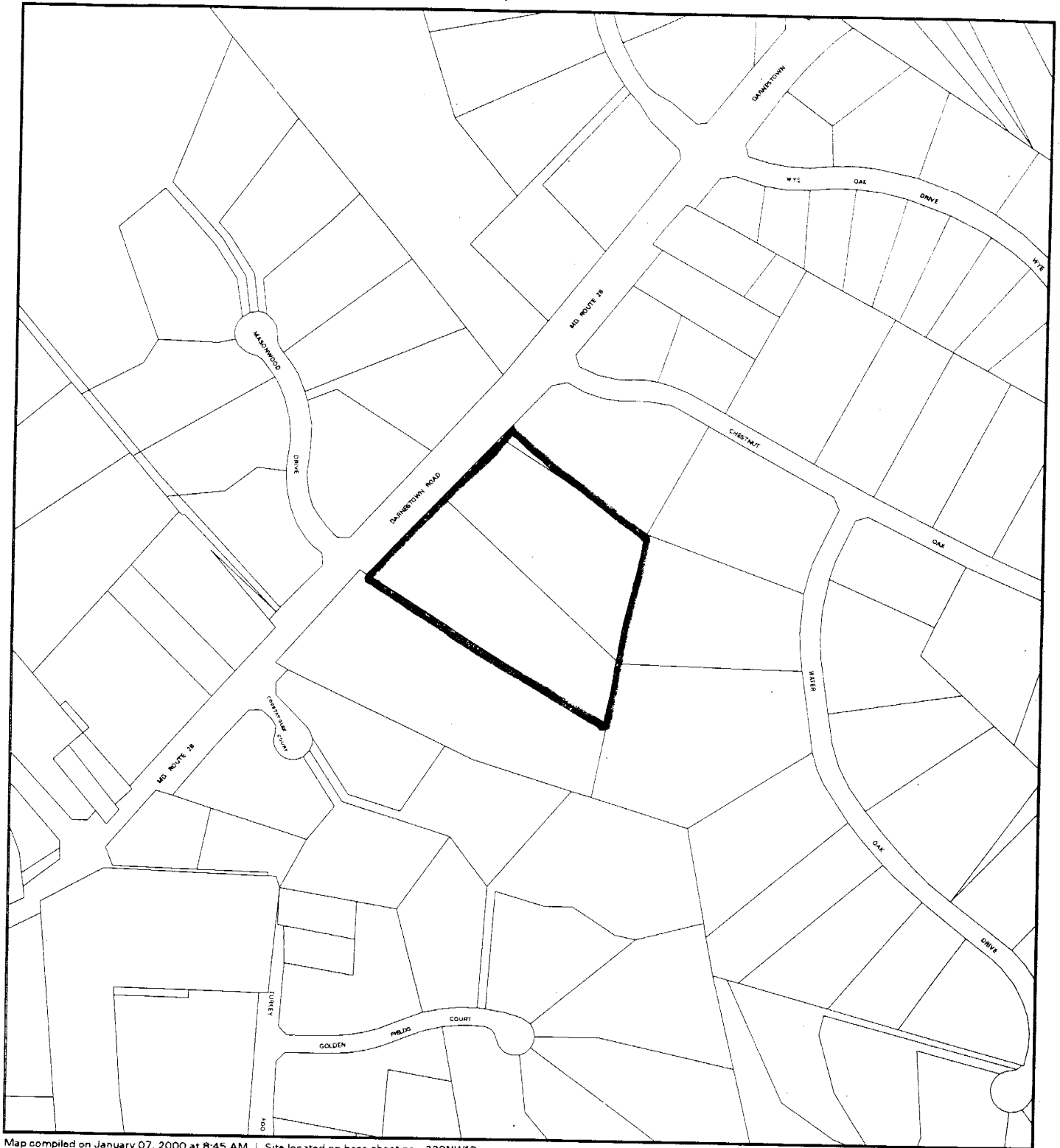
Research & Technology Center



1 : 4800

VICINITY MAP FOR

ANCIENT OAK WEST (1-03080)



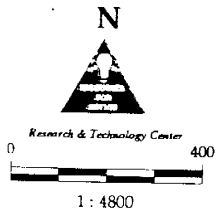
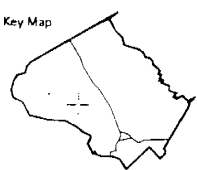
Map compiled on January 07, 2000 at 8:45 AM | Site located on base sheet no - 220NW13

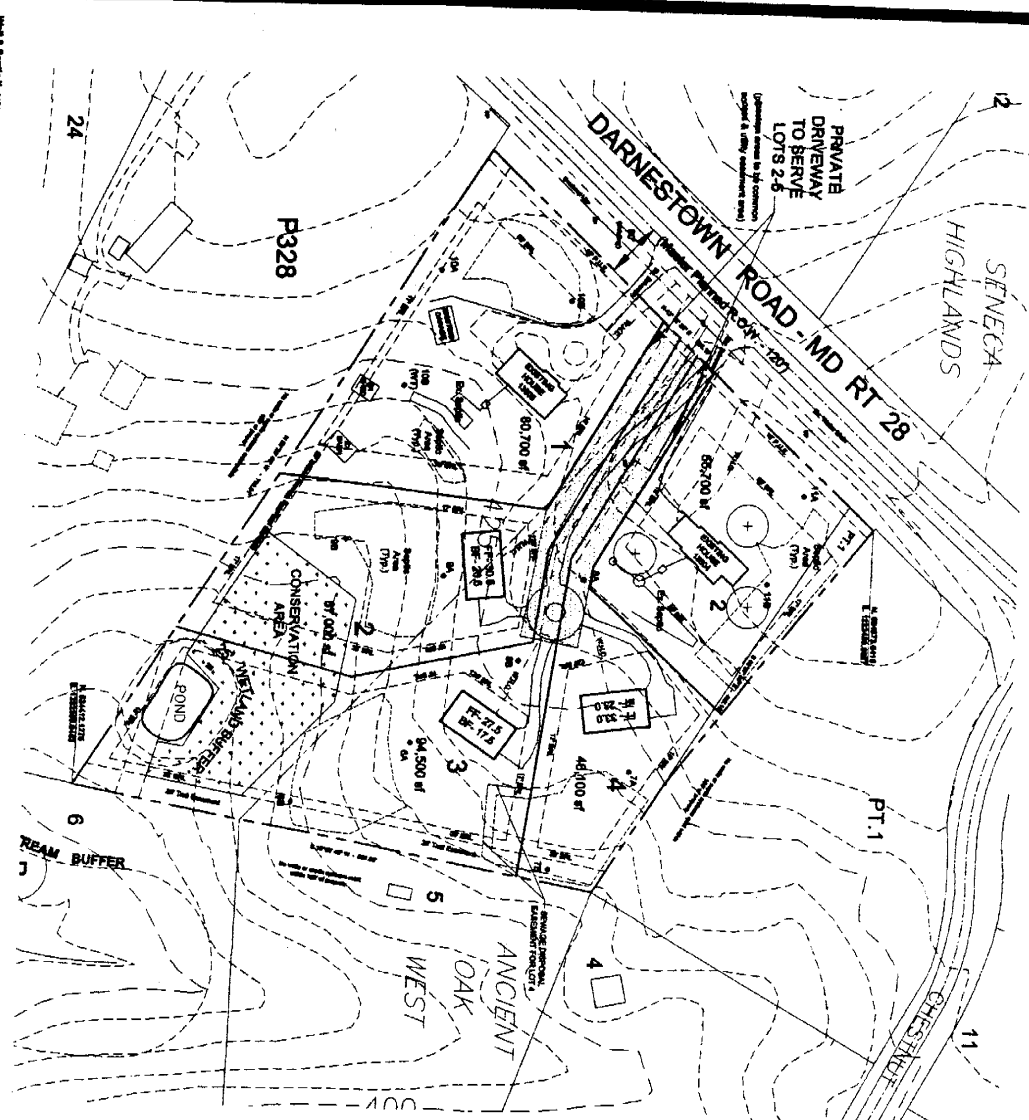
NOTICE

The planimetric, property, and topographic information shown on this map is based on copyrighted Map Products from the Montgomery County Department of Park and Planning of the Maryland-National Capital Park and Planning Commission, and may not be copied or reproduced without written permission from M-NCPPC.

Property lines are compiled by adjusting the property lines to topography created from aerial photography and should not be interpreted as actual field surveys. Planimetric features were compiled from 1:14400 scale aerial photography using stereo photogrammetric methods.

This map is created from a variety of data sources, and may not reflect the most current conditions in any one location and may not be completely accurate or up to date. All map features are approximately within five feet of their true location. This map may not be the same as a map of the same area plotted at an earlier time as the data is continuously updated. Use of this map, other than for general planning purposes is not recommended. - Copyright 1998



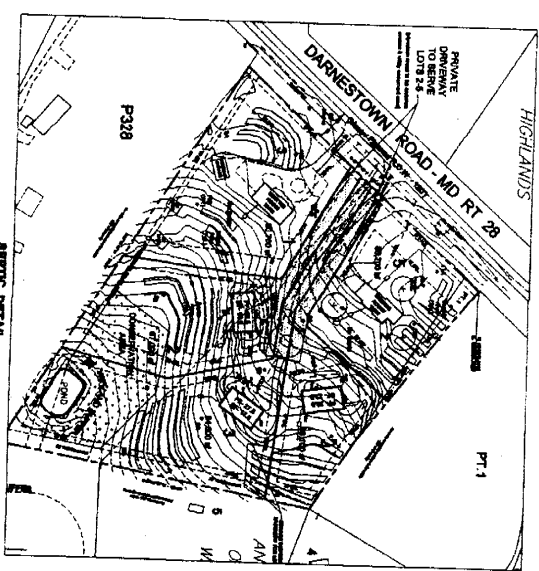


Notes:
 1. Existing water systems on plan have been indicated.
 2. Existing utility lines are indicated by dashed lines.
 3. Existing structures are indicated by solid lines.
 4. Existing trees are indicated by solid circles.
 5. Existing easements are indicated by dashed lines.
 6. Existing wetlands are indicated by wavy lines.
 7. Existing stream channels are indicated by double lines.
 8. Existing stream buffers are indicated by dashed lines.

Legend:
 - Dashed line: Utility lines
 - Solid line: Structures
 - Solid circle: Trees
 - Wavy line: Wetlands
 - Double line: Stream channels
 - Dashed line: Stream buffers

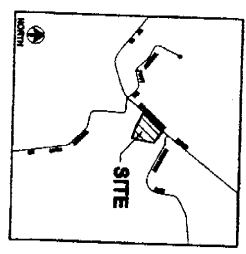
SEWAGE DISPOSAL SYSTEM - DESIGN DATA:

LOT	Area (sq ft)	Volume (cu ft)	Depth of Sewer (ft)	Flow (gpd)	Flow (mgd)	Flow (cfs)	Flow (ft³/s)	Flow (ft³/min)	Flow (ft³/hr)	Flow (ft³/day)	Flow (ft³/yr)	Flow (ft³/decade)	Flow (ft³/century)
1	100	100	10	100	0.0001	0.0001	0.0001	0.0001	0.0001	0.0001	0.0001	0.0001	0.0001
2	100	100	10	100	0.0001	0.0001	0.0001	0.0001	0.0001	0.0001	0.0001	0.0001	0.0001
3	100	100	10	100	0.0001	0.0001	0.0001	0.0001	0.0001	0.0001	0.0001	0.0001	0.0001
4	100	100	10	100	0.0001	0.0001	0.0001	0.0001	0.0001	0.0001	0.0001	0.0001	0.0001
5	100	100	10	100	0.0001	0.0001	0.0001	0.0001	0.0001	0.0001	0.0001	0.0001	0.0001
6	100	100	10	100	0.0001	0.0001	0.0001	0.0001	0.0001	0.0001	0.0001	0.0001	0.0001
7	100	100	10	100	0.0001	0.0001	0.0001	0.0001	0.0001	0.0001	0.0001	0.0001	0.0001
8	100	100	10	100	0.0001	0.0001	0.0001	0.0001	0.0001	0.0001	0.0001	0.0001	0.0001



- NOTES:**
1. AREA OF PROPERTY - 7.28 ac
 2. EXISTING ZONING - R-200
 3. MINIMUM LOT SIZE PERMITTED - 30,000 sq ft
 4. MINIMUM LOT SIZE SHOWN - 48,100 sq ft (1.0 ac)
 5. NUMBER OF LOTS SHOWN ON PLAN - 8
 6. LOTS TO BE SERVED BY PRIVATE WATER & ON-SITE SEWAGE SYSTEMS
 7. EXISTING UTILITIES TO BE MAINTAINED OR REPLACED
 8. DEVELOPMENT STANDARDS - W-1, 8-8

CONTACT:
 MONTGOMERY COUNTY
 PLANNING AND ZONING DEPARTMENT
 20015 MONTGOMERY ROAD
 GAITHERSBURG, MD 20878
 (301) 948-8170



PRELIMINARY PLAN
ANCIENT OAK WEST
 Montgomery County, Maryland

B&A Benning & Associates, Inc.
 Land Planning Consultants
 6000 Study Grove Court
 Gaithersburg, MD 20877
 301-948-0100

date: February 2003
 scale: 1" = 60'



SHEET 1 OF 1

NO.	DATE
1	2/20/03