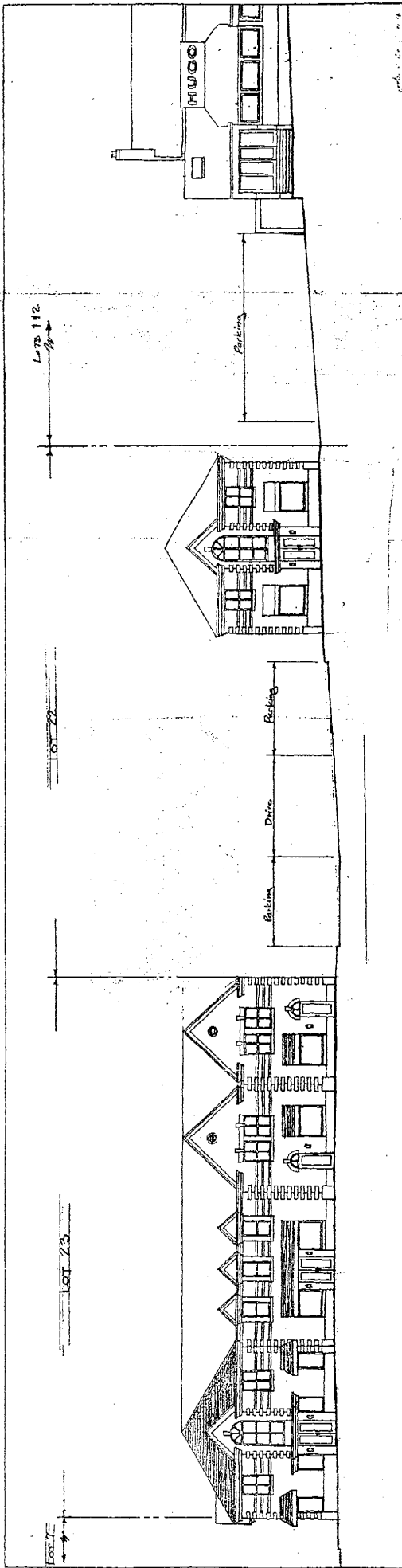


PLANT LIST

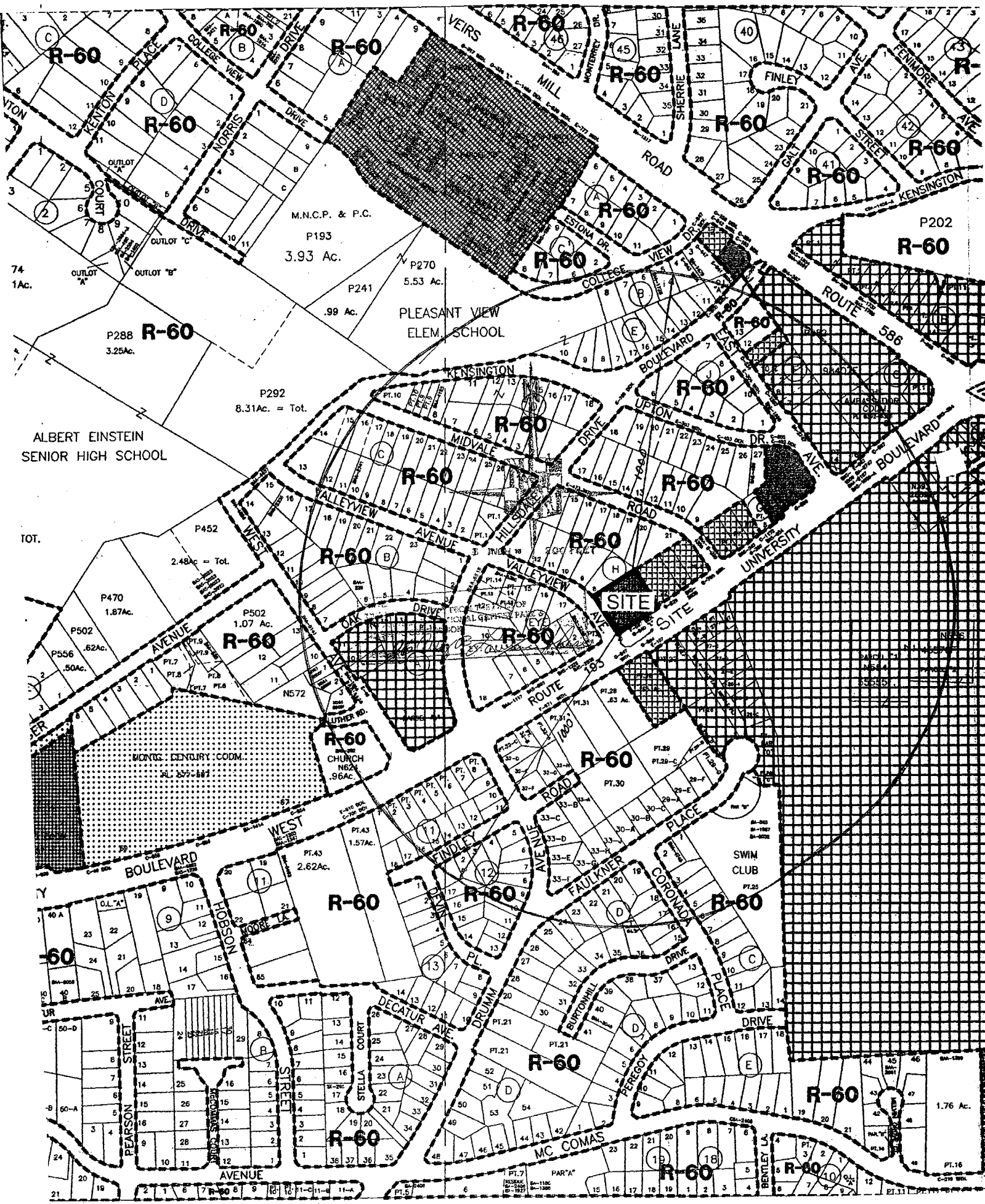
<u>SYMBOL</u>	<u>DESCRIPTION</u>	<u>NUMBER</u>	<u>REMARKS</u>
	RED MAPLE (<i>Acer rubrum</i>)	4 each	2 1/2" cal. b.t.b.
	WILLOW OAK (<i>Quercus phellos</i>)	9 each	2 1/2" cal. b.t.b.
	REDBUD (<i>Cercis canadensis</i>)	3 each	1 1/2" cal. b.t.b.
	LEGLAND CYPRESS (<i>Cupressus parlati leylandii</i>)	10 each	6" tall min. b.t.b.
	VIRGINIA PINE (<i>Pinus virginiana</i>)	10 each	6" tall min. b.t.b.
	SKYROCKET JUNIPER (<i>Juniperus virginiana skyrocket</i>)	0	3 gal. cont.
	DELAWARE AZALEA (mixed red & white)	41 each	2 gal. cont.
	CRANBERRY COTONEASTER (<i>Cotoneaster apiculata</i>)	97 each	2 gal. cont.
	MIDWAY PINE (<i>Pinus murrayana</i>)	54 each	2 gal. cont.
	BLUE RUG JUNIPER (<i>Juniperus horizontalis Wiltonii</i>)	8 each	2 gal. cont.
	SHREDDED MULCH WITH EDGE (metal or plastic)	1,795 S.F.	2" thick mat.
	GRASS	4,025 S.F.	Seed or seed & mulch

<u>SITE LIGHTING</u>			
<u>SYMBOL</u>	<u>DESCRIPTION</u>	<u>LOCATION</u>	<u>REMARKS</u>
	SOFFIT OR WALL MOUNTED FIXTURE AIMED AT BUILDING AND / OR DOWNWARD.	15' TO 20' o/c AROUND BUILDING - ADJUST TO DOOR LOCATIONS. LIGHTS AT REAR OF BUILDING TO HAVE SHIELDS TO MINIMIZE OFFSITE LIGHT GLARE.	150 watt
	FREE STANDING 42" HIGH BOLLARD FIXTURES WITH 360 DEGREE DOWNWARD FACING REFLECTORS. USE SHIELDS TO PROTECT ADJACENT PROPERTIES FROM GLARE - SEE PLAN FOR SHIELD LOCATION AND SCOPE OF BLOCKAGE.	TO BE INSTALLED A MINIMUM OF 2' BEHIND FACE OF CURB OR 1' OFF EDGE OF WALK.	250 WATT MAX.

LANDSCAPE AND LIGHTING INFORMATION



FRONT ELEVATION



M.N.C.P. & P.C.
P193
3.93 Ac.

P288 **R-60**
3.25Ac.

P292
8.31Ac. = Tot.

ALBERT EINSTEIN
SENIOR HIGH SCHOOL

TOT.

P502
1.07 Ac.
R-60

CHURCH
N62
.96Ac.
R-60

WEST
BOULEVARD
PT.43
2.62Ac.

R-60

R-60

R-60

SWIM CLUB
PT.23
R-60

R-60

R-60

R-60

1.76 Ac.
PT.16

R-60

R-60

R-60

PT.11

PT.7
1.25Ac.
PAR "A"
PT.5

PT.11