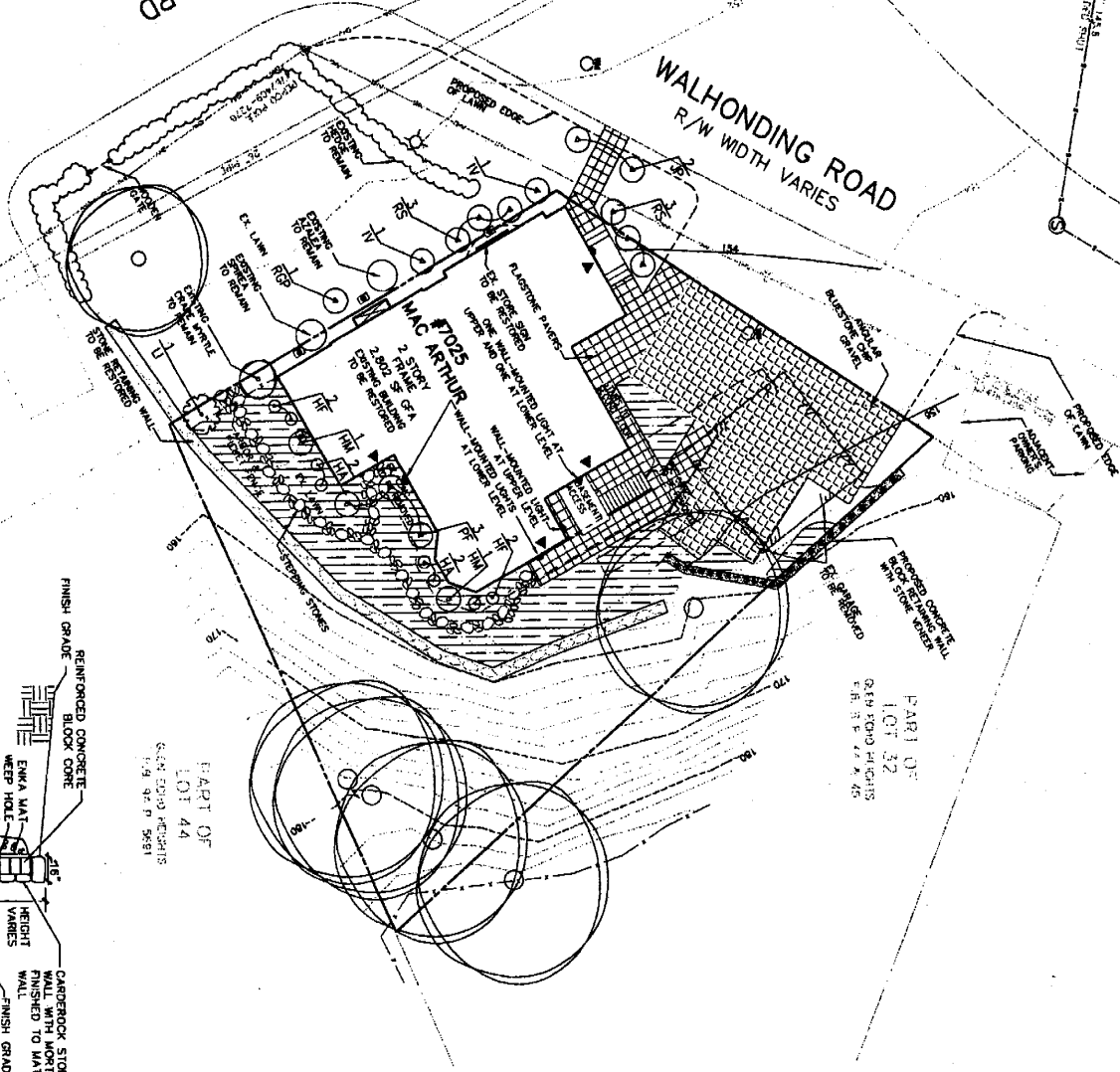


TON PATH
PLAYING
PARKING LOT 32A

PART OF LOT 32
L. 158E L. 39D
(R/W WIDTH VARIES)

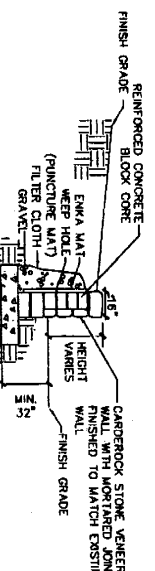
MAC ARTHUR BOULEVARD
(CONDUIT ROAD)
R/W WIDTH VARIES

WALHONDING ROAD
R/W WIDTH VARIES



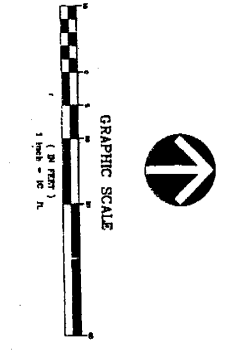
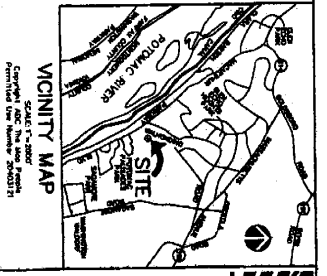
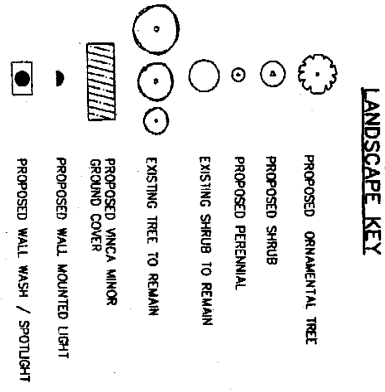
PART OF
LOT 32
GLEN ECHO HEIGHTS
R/W WIDTH VARIES

PART OF
LOT 44
GLEN ECHO HEIGHTS
R/W WIDTH VARIES



CONCRETE BLOCK RETAINING WALL WITH STONE VENEER
NOT TO SCALE

RECEIVED
OCT 07 2005
DEVELOPMENT REVIEW DIVISION



DATE: MAY 2005	SCALE: 1"=10'
DRAWN: [Name]	PROJECT/REV NO: 1133
CHECKED: [Name]	SHEET NO: 1 OF 2
DATE: [Date]	

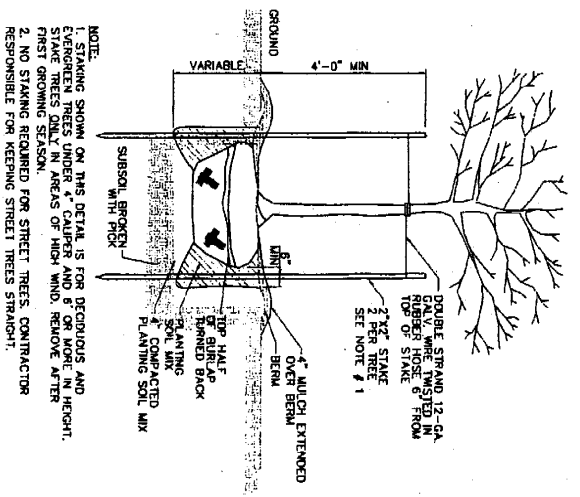
SPECIAL EXCEPTION
LANDSCAPE PLAN

SYCAMORE STORE
7025 MAC ARTHUR BLVD.
PART OF LOT 32, BLOCK "B-2"
GLEN ECHO HEIGHTS
BETHESDA (7TH) ELECTION DISTRICT
MONTGOMERY COUNTY, MARYLAND

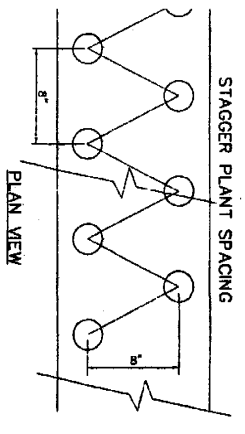
VIA
ENGINEERS & PLANNERS & LANDSCAPE ARCHITECTS & SURVEYORS & GPS SERVICES
VIA INCORPORATED
20231 CENTURY BOULEVARD SUITE 400 # McLEAN, VIRGINIA 22102
(703) 798-4100 IN FAX (501) 916-2282
C/O BALTIMORE, MD McLEAN, VA LEE SPRING, VA

PLANT SCHEDULE

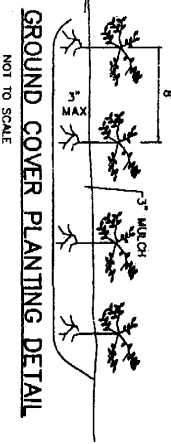
NO.	SYMBOL	QUANTITY	SPOTTING/PLANT NAME	COMMON NAME	SIZE	SOIL BALL DIMENSIONS
1		1	Lightgreen Birch 1 1/2" Leader "Normal"	Common Green Birch	6"-8"	12" x 12" x 12"
2		1	Hydrangea macrophylla "Long Blue"	Common Hydrangea	30" - 36" H.	36" x 36" x 36"
3		1	Ulm alpicola "New York Dwarf"	Common Elm	30" - 36" H.	36" x 36" x 36"
4		1	Hydrangea macrophylla "White Glimmer"	Common Hydrangea	30" - 36" H.	36" x 36" x 36"
5		1	Hydrangea macrophylla "White Glimmer"	Common Hydrangea	30" - 36" H.	36" x 36" x 36"
6		1	Hydrangea macrophylla "White Glimmer"	Common Hydrangea	30" - 36" H.	36" x 36" x 36"
7		1	Hydrangea macrophylla "White Glimmer"	Common Hydrangea	30" - 36" H.	36" x 36" x 36"
8		1	Hydrangea macrophylla "White Glimmer"	Common Hydrangea	30" - 36" H.	36" x 36" x 36"
9		1	Hydrangea macrophylla "White Glimmer"	Common Hydrangea	30" - 36" H.	36" x 36" x 36"
10		1	Hydrangea macrophylla "White Glimmer"	Common Hydrangea	30" - 36" H.	36" x 36" x 36"
11		1	Hydrangea macrophylla "White Glimmer"	Common Hydrangea	30" - 36" H.	36" x 36" x 36"
12		1	Hydrangea macrophylla "White Glimmer"	Common Hydrangea	30" - 36" H.	36" x 36" x 36"
13		1	Hydrangea macrophylla "White Glimmer"	Common Hydrangea	30" - 36" H.	36" x 36" x 36"
14		1	Hydrangea macrophylla "White Glimmer"	Common Hydrangea	30" - 36" H.	36" x 36" x 36"
15		1	Hydrangea macrophylla "White Glimmer"	Common Hydrangea	30" - 36" H.	36" x 36" x 36"
16		1	Hydrangea macrophylla "White Glimmer"	Common Hydrangea	30" - 36" H.	36" x 36" x 36"
17		1	Hydrangea macrophylla "White Glimmer"	Common Hydrangea	30" - 36" H.	36" x 36" x 36"
18		1	Hydrangea macrophylla "White Glimmer"	Common Hydrangea	30" - 36" H.	36" x 36" x 36"
19		1	Hydrangea macrophylla "White Glimmer"	Common Hydrangea	30" - 36" H.	36" x 36" x 36"
20		1	Hydrangea macrophylla "White Glimmer"	Common Hydrangea	30" - 36" H.	36" x 36" x 36"



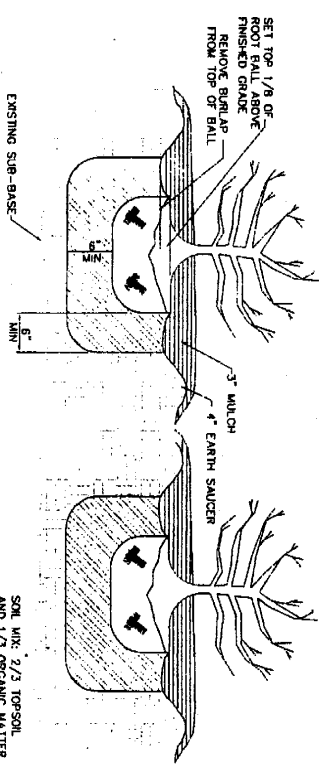
PLANTING DETAIL
NOT TO SCALE



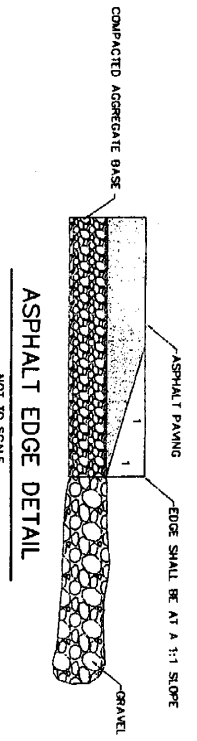
PLAN VIEW



NOT TO SCALE



SHRUB PLANTING DETAIL
NOT TO SCALE



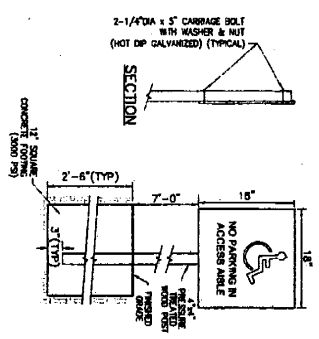
NOT TO SCALE

- ### QUALITY ASSURANCE NOTES
1. ALL PLANT MATERIAL SHALL BE IN ACCORDANCE WITH THE AMERICAN STANDARD FOR NURSERY STOCK NO. Z601-1986, BY THE AMERICAN ASSOCIATION OF NURSERYMEN, INC.
 2. ALL PLANTS SHALL BE WHOLESALE HEALTHY, VIGOROUS, FREE FROM PLANT DISEASES, INSECT PESTS AND THEIR EGGS AND SHALL HAVE HEALTHY NORMAL TOP AND ROOT SYSTEMS. PLANTS SHALL BE NURSERY-GROWN STOCK AND FRESHLY DUG.
 3. NO SHADE TREES OR EVERGREENS WILL BE ACCEPTED.
 4. SUBSTITUTIONS ARE NOT PERMITTED WITHOUT PERMISSION FROM THE LANDSCAPE ARCHITECT.

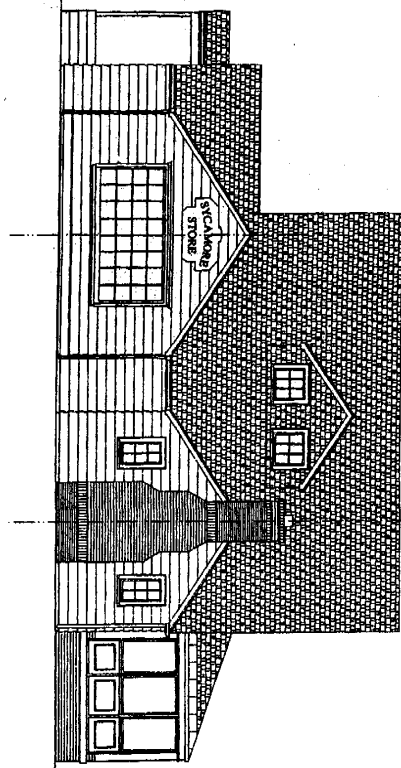
RECEIVED

OCT 07 2005

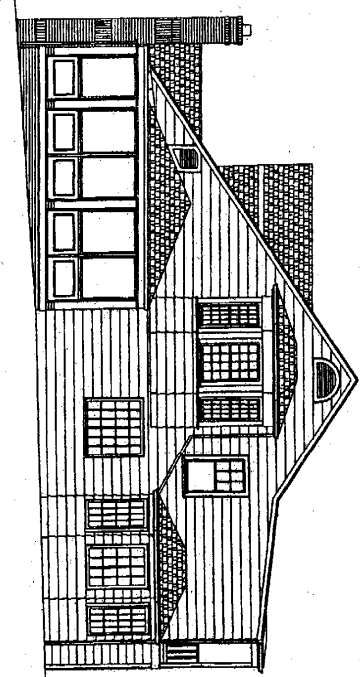
DEVELOPMENT REVIEW DIVISION



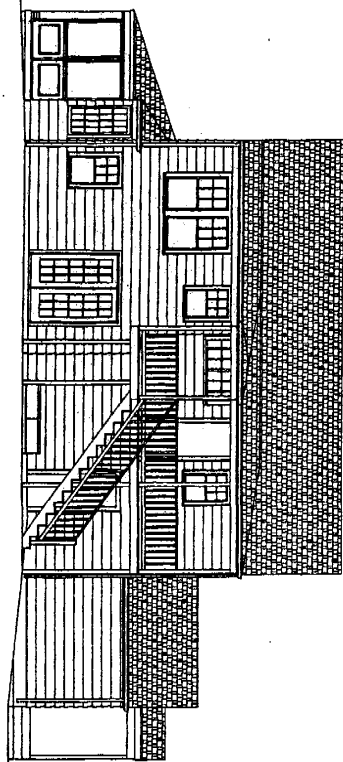
HANDICAP PARKING SIGN DETAIL
NOT TO SCALE



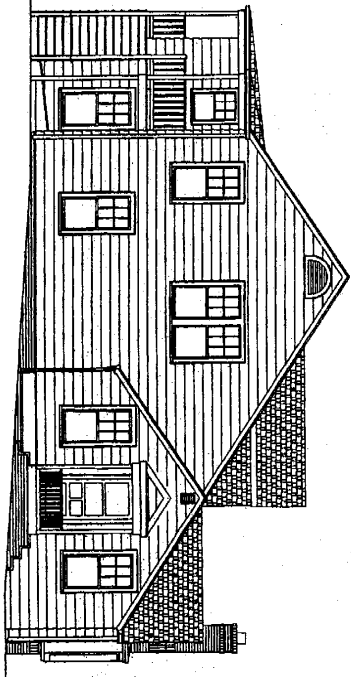
B1
A-3
FRONT ELEVATION
1/8" = 1'-0"



B4
A-3
RIGHT SIDE ELEVATION
1/8" = 1'-0"



D1
A-3
REAR ELEVATION
1/8" = 1'-0"



D4
A-3
LEFT SIDE ELEVATION
1/8" = 1'-0"

THREE ELEVATIONS
A-3

ELEVATIONS	
PRINTED 5.3.06	

SYCAMORE STORE
7025 MACARTHUR BLVD
BETHESDA, MD 20816

BRENNEMAN & CO.
1201-933-3286 Voice Fax 1201-933-3286
WWW.BRENNEMAN.COM

APPROVED WHEN
SEALED & SIGNED
BRENNEMAN & CO., INC.