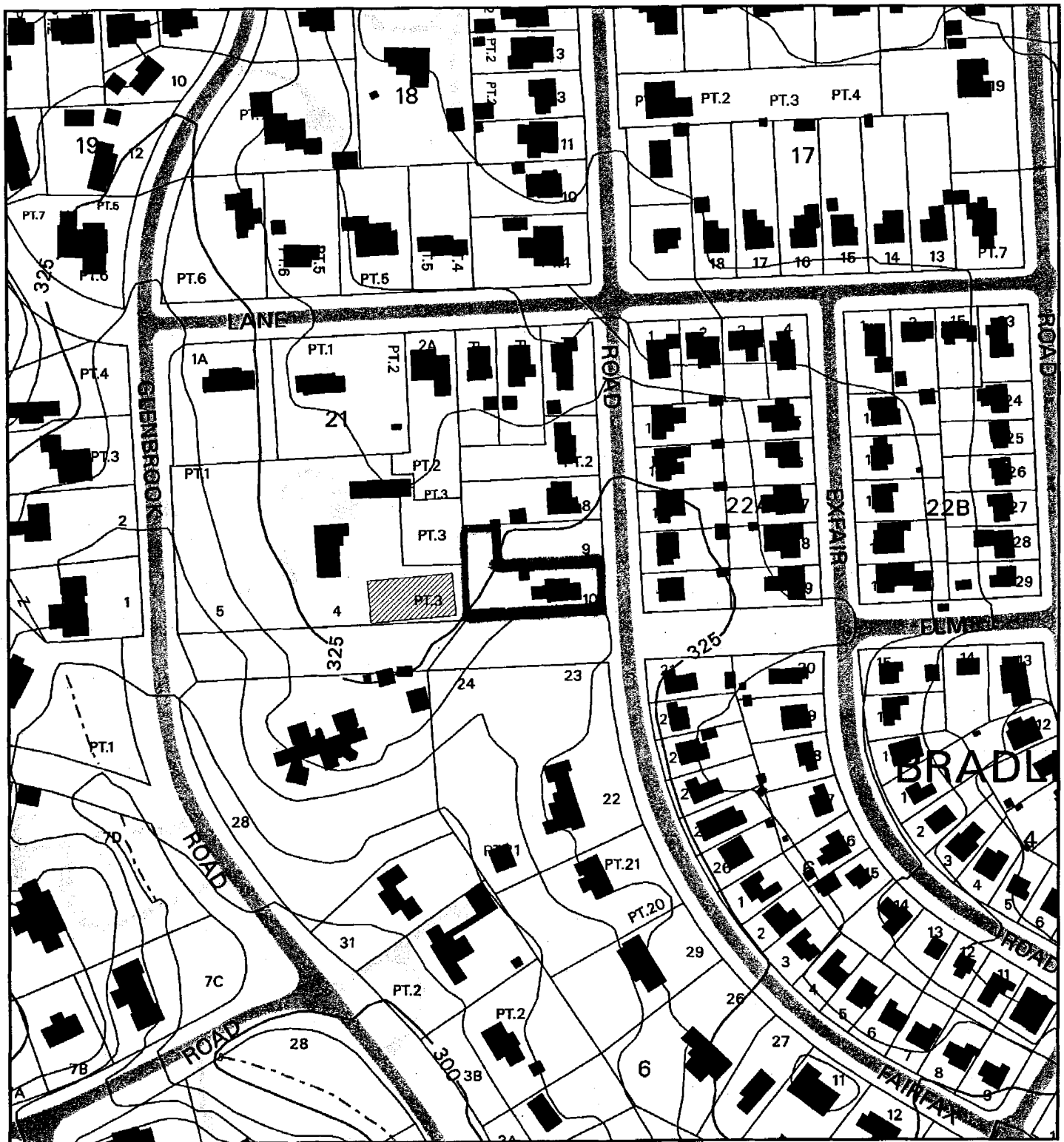


EDGEMOOR (1-06015)



Map compiled on September 01, 2005 at 11:52 AM | Site located on base sheet no - 209NW05

NOTICE

The planimetric, property, and topographic information shown on this map is based on copyrighted Map Products from the Montgomery County Department of Park and Planning of the Maryland-National Capital Park and Planning Commission, and may not be copied or reproduced without written permission from M-NCPPC.

Property lines are compiled by adjusting the property lines to topography created from aerial photography and should not be interpreted as actual field surveys. Planimetric features were compiled from 1:14400 scale aerial photography using stereo photogrammetric methods.

This map is created from a variety of data sources, and may not reflect the most current conditions in any one location and may not be completely accurate or up to date. All map features are approximately within five feet of their true location. This map may not be the same as a map of the same area plotted at an earlier time as the data is continuously updated. Use of this map, other than for general planning purposes is not recommended. - Copyright 1998

Key Map



N



Research & Technology Center

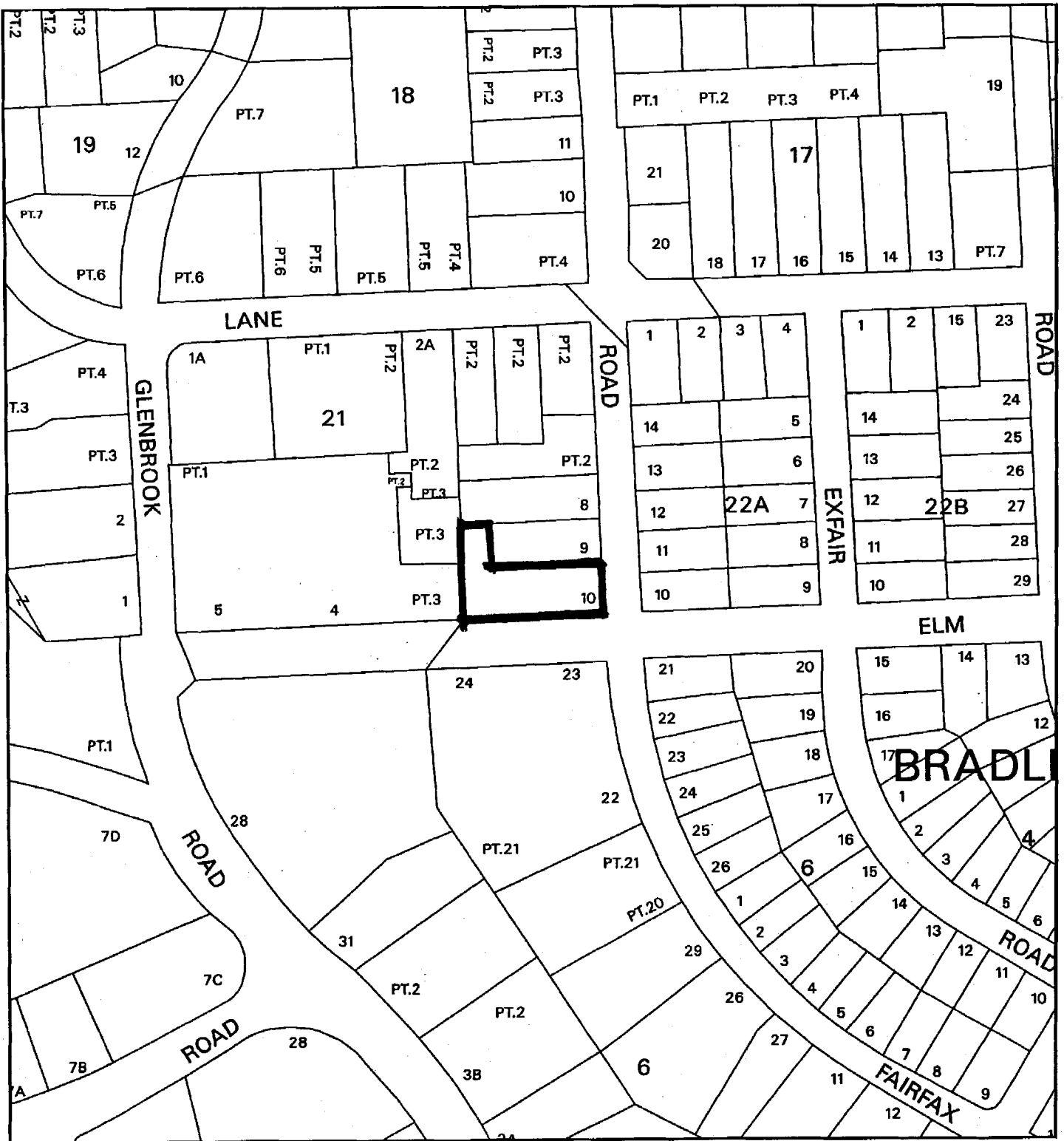


1 inch = 200 feet
1 : 2400

MONTGOMERY COUNTY DEPARTMENT OF PARK AND PLANNING
 THE MARYLAND-NATIONAL CAPITAL PARK AND PLANNING COMMISSION
 8787 Georgia Avenue - Silver Spring, Maryland 20910-3760

M-NCPPC

EDGEMOOR (1-06015)



Map compiled on September 01, 2005 at 11:55 AM | Site located on base sheet no. - 209NW05

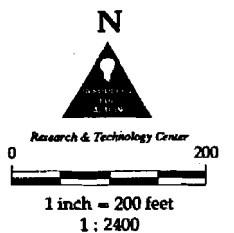
NOTICE

The planimetric, property, and topographic information shown on this map is based on copyrighted Map Products from the Montgomery County Department of Park and Planning of the Maryland-National Capital Park and Planning Commission, and may not be copied or reproduced without written permission from M-NCPPC.

Property lines are compiled by adjusting the property lines to topography created from aerial photography and should not be interpreted as actual field surveys. Planimetric features were compiled from 1:14400 scale aerial photography using stereo photogrammetric methods.

This map is created from a variety of data sources, and may not reflect the most current conditions in any one location and may not be completely accurate or up to date. All map features are approximately within five feet of their true location. This map may not be the same as a map of the same area plotted at an earlier time as the data is continuously updated. Use of this map, other than for general planning purposes is not recommended. - Copyright 1998

MONTGOMERY COUNTY DEPARTMENT OF PARK AND PLANNING
 THE MARYLAND-NATIONAL CAPITAL PARK AND PLANNING COMMISSION
 8787 Georgia Avenue - Silver Spring, Maryland 20910-3760



Edgemoor Resubdivision							
Lot	Block	Frontage	Alignment	Size	Shape	Width	Area
23	6	150	Corner	24,090	Irregular	155	11,850
1-A	21	170	Corner	24,604	Irregular	170	12,305
28	6	360	Corner	97,264	Irregular	275	68,527
21	6	65	Corner	7,343	Irregular	58	2,839
20	17	111	Corner	9,250	Irregular	111	3,710
10	22A	60	Corner	7,506	Rectangular	60	2,960
1	22A	117	Corner	8,199	Rectangular	117	2,664
5	21	197	Corner	29,025	Square	196	16,787
22	6	57	Perpendicular	6,473	Irregular	52	2,696
24	6	100	Perpendicular	18,075	Irregular	100	9,366
11	22A	60	Perpendicular	7,500	Rectangular	60	3,359
12	22A	60	Perpendicular	7,500	Rectangular	60	3,359
13	22A	60	Perpendicular	7,500	Rectangular	60	3,359
14	22A	60	Perpendicular	7,500	Rectangular	60	3,359
11	18	60	Perpendicular	9,100	Rectangular	60	3,430
8	21	63	Perpendicular	12,285	Rectangular	63	6,837
2-A	21	70	Perpendicular	11,900	Rectangular	70	5,175
10	18	77	Perpendicular	12,634	Rectangular	76	5,672
21	17	109	Perpendicular	10,011	Rectangular	109	4,106
4	21	140	Perpendicular	30,000	Square	140	16,246
Proposed Lot							
12	21	194	Corner	14,412	Rectangular	194	7,128
*Existing Lot 9	21	74	Perpendicular	11,699	Rectangular	74	6,439
* Included for informational purposes							