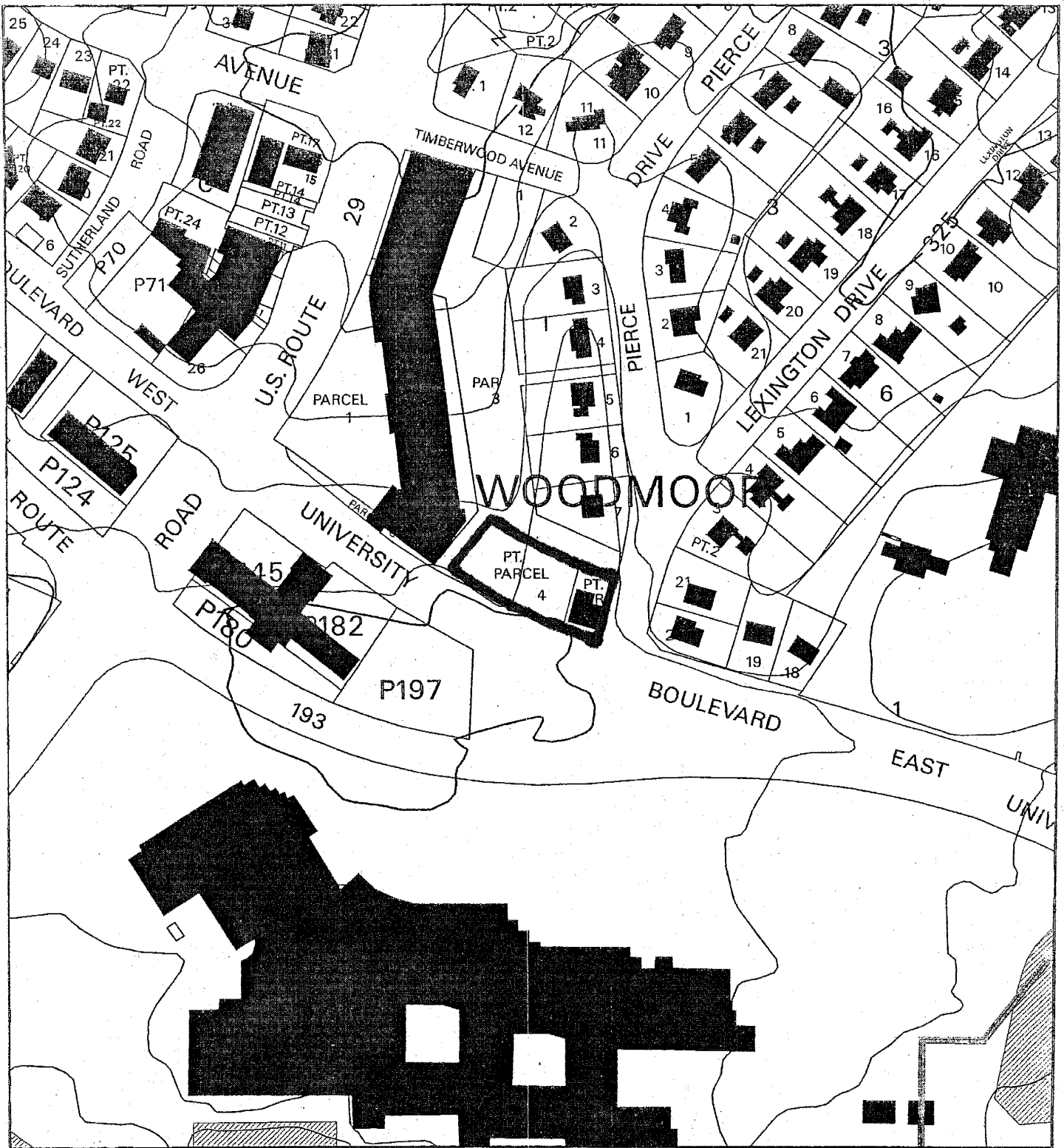


BANK OF AMERICA - WOODMOOR (1-20060460)



Map compiled on October 27, 2005 at 10:48 AM | Site located on base sheet no - 212NW01

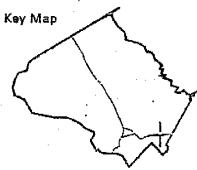
NOTICE

The planimetric, property, and topographic information shown on this map is based on copyrighted Map Products from the Montgomery County Department of Park and Planning of the Maryland-National Capital Park and Planning Commission, and may not be copied or reproduced without written permission from M-NCPPC.

Property lines are compiled by adjusting the property lines to topography created from aerial photography and should not be interpreted as actual field surveys. Planimetric features were compiled from 1:14400 scale aerial photography using stereo photogrammetric methods.

This map is created from a variety of data sources, and may not reflect the most current conditions in any one location and may not be completely accurate or up to date. All map features are approximately within five feet of their true location. This map may not be the same as a map of the same area plotted at an earlier time as the data is continuously updated. Use of this map, other than for general planning purposes is not recommended. - Copyright 1998

Key Map

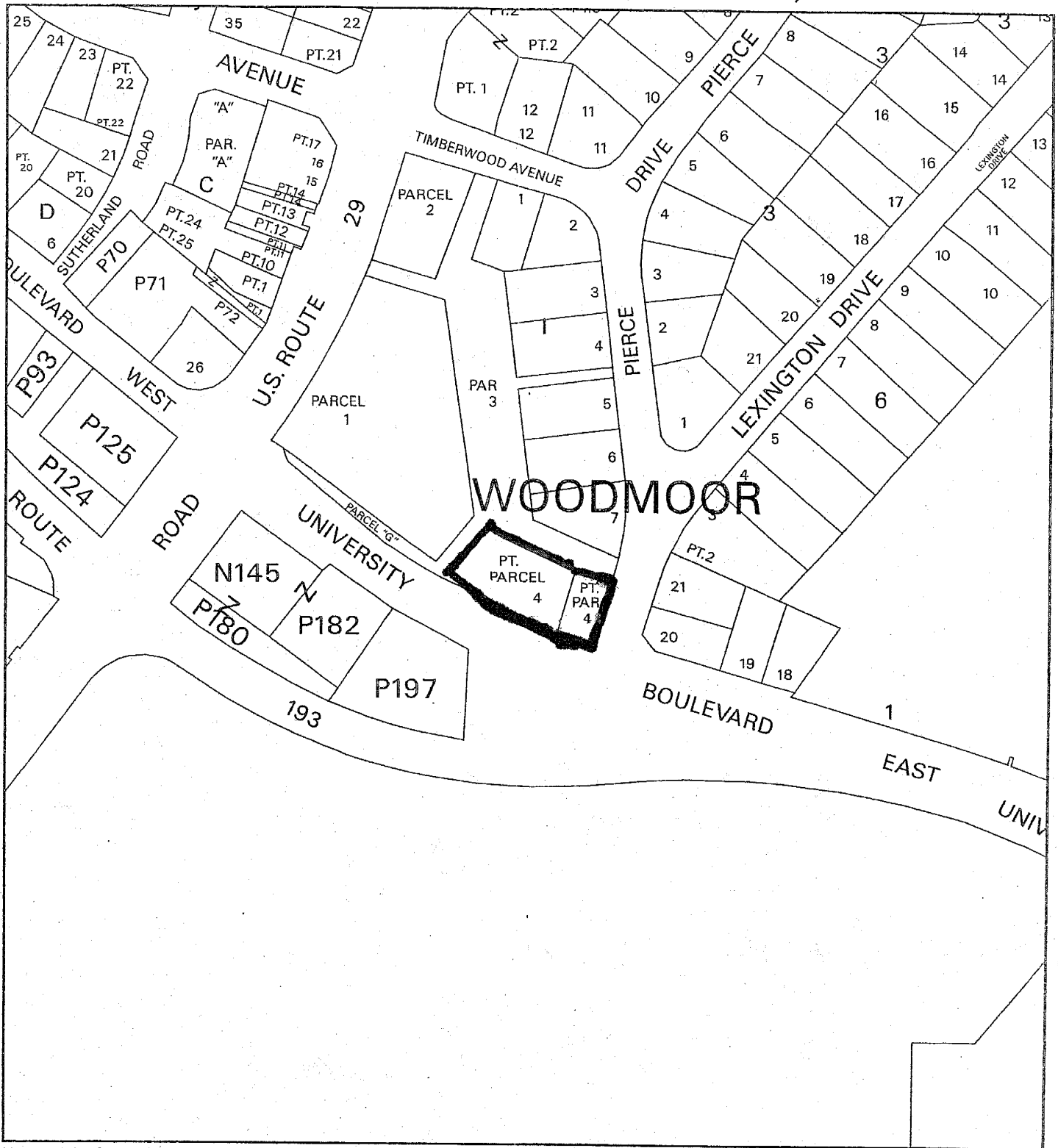


Research & Technology Center

0 200

1 inch = 200 feet
1: 2400

BANK OF AMERICA - WOODMOOR (1-20060460)



Map compiled on October 27, 2005 at 10:51 AM | Site located on base sheet no - 212NW01

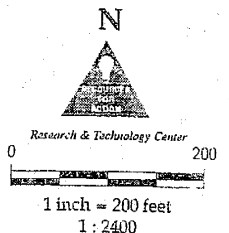
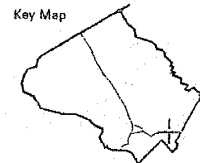
NOTICE

The planimetric, property, and topographic information shown on this map is based on copyrighted Map Products from the Montgomery County Department of Park and Planning of the Maryland-National Capital Park and Planning Commission, and may not be copied or reproduced without written permission from M-NCPPC.

Property lines are compiled by adjusting the property lines to topography created from aerial photography and should not be interpreted as actual field surveys. Planimetric features were compiled from 1:14400 scale aerial photography using stereo photogrammetric methods.

This map is created from a variety of data sources, and may not reflect the most current conditions in any one location and may not be completely accurate or up to date. All map features are approximately within five feet of their true location. This map may not be the same as a map of the same area plotted at an earlier time as the data is continuously updated. Use of this map, other than for general planning purposes is not recommended. - Copyright 1998

MONTGOMERY COUNTY DEPARTMENT OF PARK AND PLANNING
 THE MARYLAND-NATIONAL CAPITAL PARK AND PLANNING COMMISSION
 8787 Georgia Avenue • Silver Spring, Maryland 20910-3760





A.J. VOLANTH

BOHLER ENGINEERING, P.C.

BANK OF AMERICA PRELIMINARY PLAN

SILVER SPRING, MONTGOMERY COUNTY, MARYLAND

Table with columns: SHEET NUMBER, DRAWN BY, CHECKED BY, DATE, SCALE, and other project details.



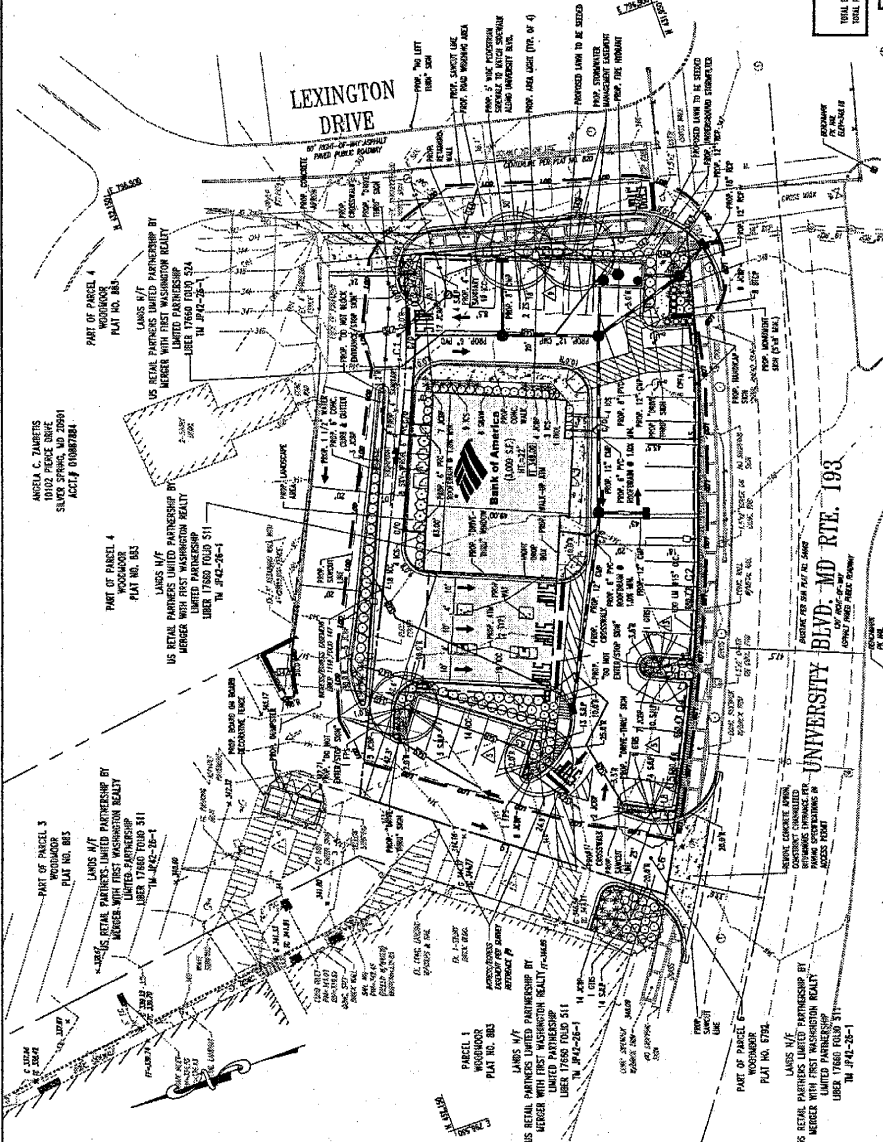
LOCATION MAP
FROM THE WASHINGTON METRO AREA
MONTGOMERY COUNTY, MD MAP 27, 080 P-3
SCALE 1"=1/4"

PLANNING NOTES
1. THIS PLAN IS A PRELIMINARY PLAN...
2. SITE SPECIFIC...
3. ALL CONSTRUCTION...
4. THE PROPOSED...
5. THE PROPOSED...
6. THE PROPOSED...
7. THE PROPOSED...

COMPLIANCE CHECK
REVISOR: [Name]
SECTION: [Name]
DATE: [Date]
APPROVED: [Name]

Table with columns: REVISION, SECTION, and COMMENTS. Lists various changes and approvals.

MISS UTILITY logo and text: MISS UTILITY, MISSISSIPPI VALLEY WATER SUPPLY DISTRICT, INC.



GREEN SPACE
TOTAL GREEN SPACE = 2,100 SQ. FT. OR 10% A.C. - 10%
TOTAL PROPOSED GREEN SPACE = 2,200 SQ. FT. OR 10% A.C. - 10%

OVERALL WOODWORK SHOPPING CENTER
TOTAL PROPOSED BUILDING AREA = 100,000 SQ. FT.

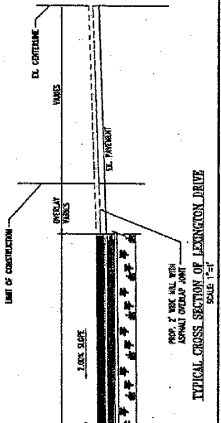
LANDSCAPE SCHEDULE
ITEM NO. 1: [Description]
ITEM NO. 2: [Description]
ITEM NO. 3: [Description]

Table with columns: ITEM NO., DESCRIPTION, QUANTITY, and UNIT. Lists materials and quantities for the project.

Table with columns: LINE, LENGTH, BEARING. Lists line data for the site plan.

Table with columns: ITEM NO., DESCRIPTION, QUANTITY, and UNIT. Lists materials and quantities for the project.

UTILITY CONTACTS
WATER: [Contact Info]
SEWER: [Contact Info]
GAS: [Contact Info]
ELECTRIC: [Contact Info]



TYPICAL CROSS SECTION OF LEXINGTON DRIVE
SCALE 1"=1'

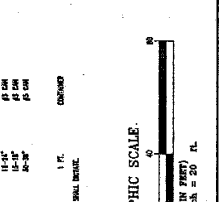


Table with columns: ITEM NO., DESCRIPTION, QUANTITY, and UNIT. Lists materials and quantities for the project.

Table with columns: ITEM NO., DESCRIPTION, QUANTITY, and UNIT. Lists materials and quantities for the project.

GENERAL NOTES
1. THE CONTRACTOR SHALL BE RESPONSIBLE FOR OBTAINING ALL NECESSARY PERMITS...
2. THE CONTRACTOR SHALL BE RESPONSIBLE FOR OBTAINING ALL NECESSARY PERMITS...

GENERAL NOTES
3. THE CONTRACTOR SHALL BE RESPONSIBLE FOR OBTAINING ALL NECESSARY PERMITS...
4. THE CONTRACTOR SHALL BE RESPONSIBLE FOR OBTAINING ALL NECESSARY PERMITS...

Preliminary Plan Data Table and Checklist

Plan Name: Bank of America – Woodmoor				
Plan Number: 120060460 (Formerly 1-060460)				
Zoning: C-4				
# of Lots: 1				
# of Outlots: 0				
Dev. Type: 3,000 square foot bank				
PLAN DATA	Zoning Ordinance Development Standard	Proposed for Approval on the Preliminary Plan	Verified	Date
Minimum Lot Area	N/A	22,477 sq.ft. is minimum proposed	<i>Done</i>	March 6, 2006
Lot Width	N/A	Must meet minimum	<i>Done</i>	March 6, 2006
Lot Frontage	100 ft. on an arterial or major road	Must meet minimum	<i>Done</i>	March 6, 2006
Setbacks				
Front	10 ft. Min.	Must meet minimum	<i>Done</i>	March 6, 2006
Side	0 ft. Min.	Must meet minimum	<i>Done</i>	March 6, 2006
Rear	0 ft. Min.	Must meet minimum	<i>Done</i>	March 6, 2006
F.A.R.	0.25 Max	0.13	<i>Done</i>	
Height	30 ft. Max.	May not exceed maximum	<i>Done</i>	March 6, 2006
Max Resid'l d.u. or Comm'l s.f. per Zoning	N/A	3,000 sq. ft.	<i>Done</i>	March 6, 2006
Site Plan Req'd?	No	No	<i>Done</i>	March 6, 2006
FINDINGS				
SUBDIVISION				
Lot frontage on Public Street	Yes	Yes	<i>Done</i>	March 6, 2006
Road frontage improvements	Yes	Yes	DPWT memo/ SHA memo	February 6, 2006/ January 27, 2006
Environmental Guidelines	Yes	Yes	Environmental Planning memo	Dec. 13, 2005
Forest Conservation	Yes	Exempted	Environmental Planning memo	Dec. 13, 2005
Master Plan Compliance	Yes	Yes	Community Based Planning memo	January 30, 2006
ADEQUATE PUBLIC FACILITIES				
Stormwater Management	Yes	Yes	DPS memo	March 25, 2005
Water and Sewer (WSSC)	Yes	Yes	WSSC memo	November 7, 2005
Local Area Traffic Review	Yes	Yes	Transportation Planning memo	March 3, 2006
Fire and Rescue	Yes	Yes	MCFRS	January 24, 2006