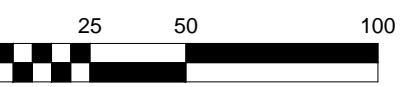


**CAPITAL CRESCENT  
SURFACE TRAIL**  
WOODMONT AVENUE TO 47TH STREET  
BETHESDA, MD



PREPARED: KW

CHECKED: LB

DATE  
3/23/18

REV. 1 -  
REV. 2 -  
REV. 3 -

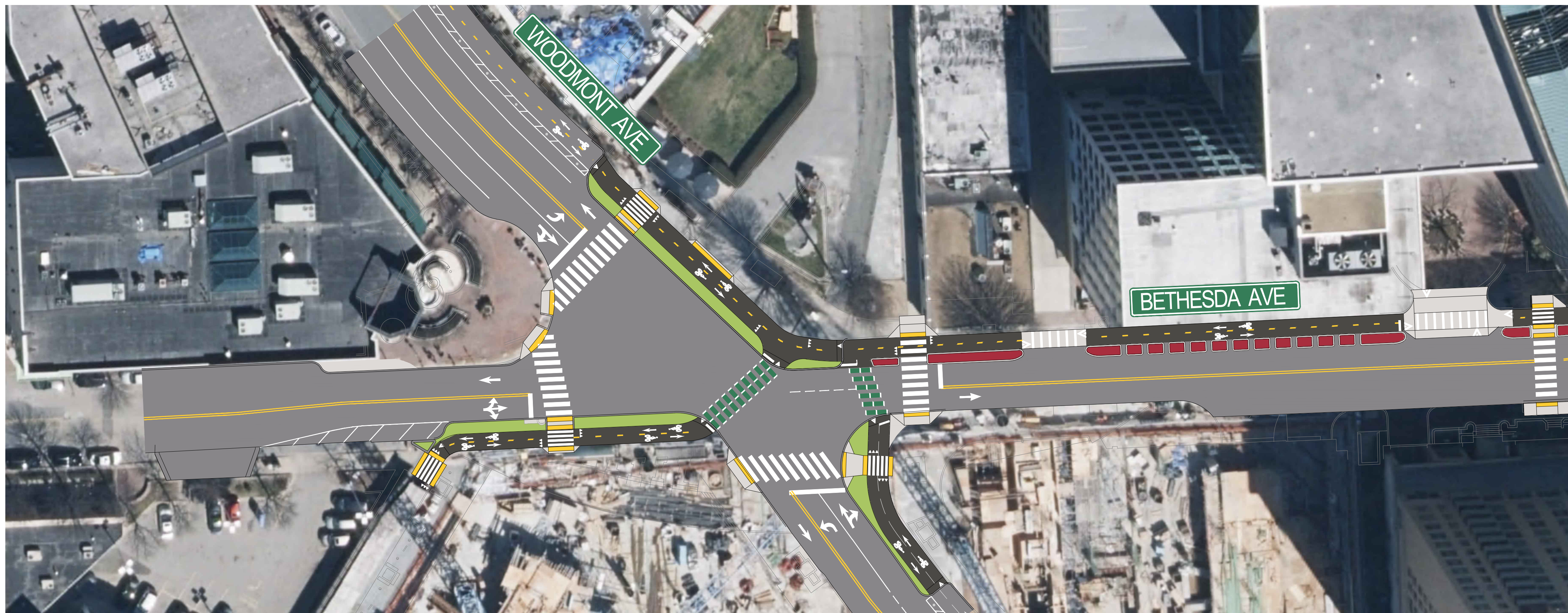
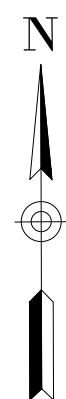
SHEET NAME  
COLOR BLOCK  
CONCEPT - 50 SCALE

DRAWING NUMBER

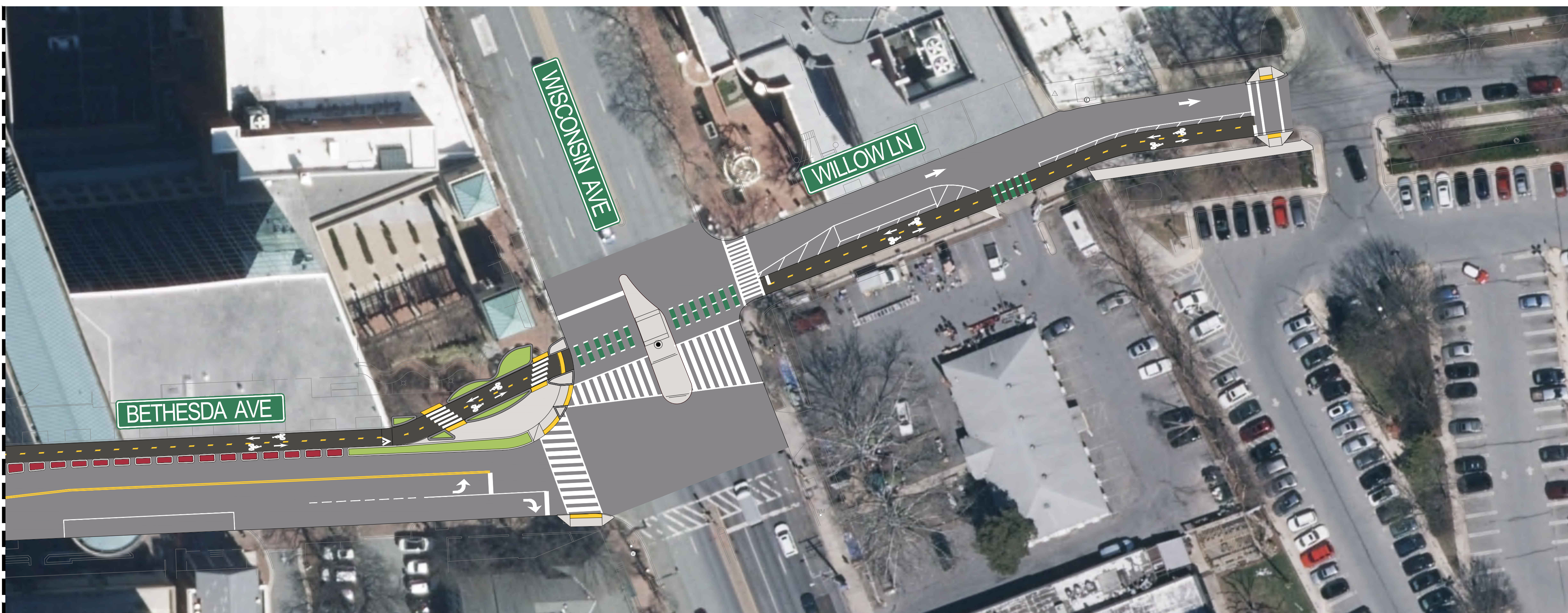
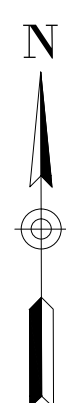
SHEET NUMBER

**1** OF **1**

NOT FOR CONSTRUCTION



MATCHLINE - SEE BELOW



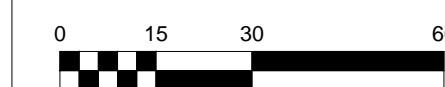
MATCHLINE - SEE ABOVE



8484 GEORGIA AVENUE, SUITE 600, SILVER SPRING, MD 20910  
PHONE: (301) 927-1900 FAX: (301) 927-2800  
www.tooledesign.com

### CAPITAL CRESCENT SURFACE TRAIL

WOODMONT AVENUE TO 47TH STREET  
BETHESDA, MD



PREPARED: KW  
CHECKED: LB  
DATE  
3/23/18  
REV. 1 -  
REV. 2 -  
REV. 3 -  
SHEET NAME  
COLOR BLOCK  
CONCEPT - 30 SCALE  
DRAWING NUMBER

SHEET NUMBER  
**1** OF **1**

NOT FOR CONSTRUCTION

Capital Crescent Surface Trail  
NW Corner of Bethesda Ave and Wisconsin Ave (Rt 355)

