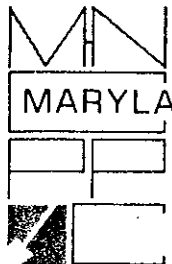


#8



THE MARYLAND-NATIONAL CAPITAL PARK AND PLANNING COMMISSION  
8787 Georgia Avenue • Silver Spring, Maryland 20910-3760

M E M O R A N D U M

DATE: February 8, 2002  
TO: Montgomery County Planning Board  
FROM: A. Malcolm Shaneman  
Development Review  
(301)495-4587  
SUBJECT: Informational Maps for Subdivision Items on the  
Planning Board's Agenda for February 14, 2002.

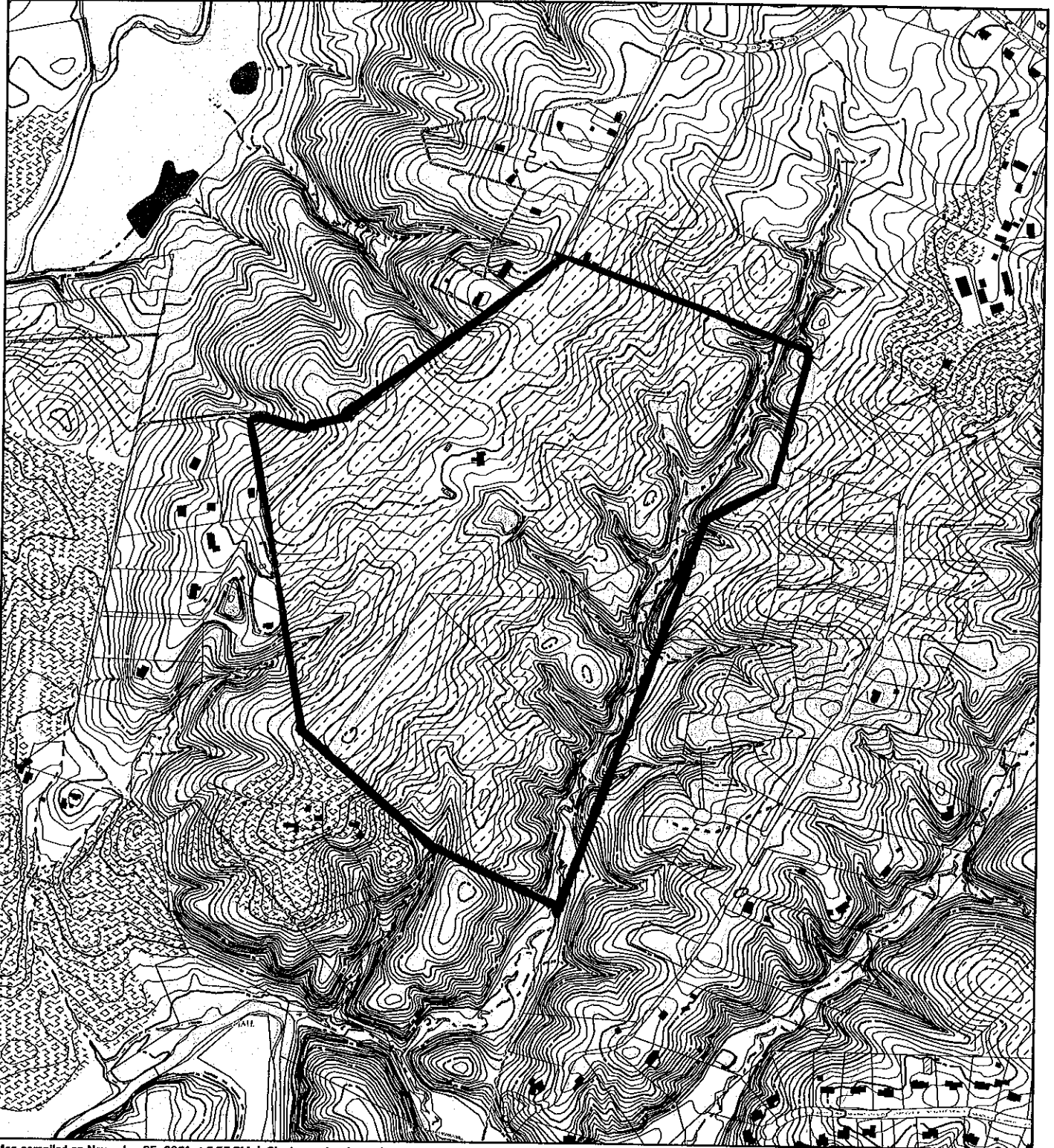
---

Attached are copies of plan drawings for Items #6, #7, and #8. These subdivision items are scheduled for Planning Board consideration on February 14, 2002. The items are further identified as follows:

- Agenda Item #6 - Preliminary Plan 1-00069  
Easter Seals-Silver Spring
- Agenda Item #7 - Preliminary Plan 1-02018  
Evangelical Formosan Church of  
Washington
- Agenda Item #8 - Preliminary Plan 1-02043  
Finnegan Farm

VICINITY MAP FOR

# FINNEGAN FARM (1-02043)



Map compiled on November 06, 2001 at 2:57 PM | Site located on base sheet no - 218NW15

## NOTICE

The planimetric, property, and topographic information shown on this map is based on copyrighted Map Products from the Montgomery County Department of Park and Planning of the Maryland-National Capital Park and Planning Commission, and may not be copied or reproduced without written permission from M-NCPPC.

Property lines are compiled by adjusting the property lines to topography created from aerial photography and should not be interpreted as actual field surveys. Planimetric features were compiled from 1:14400 scale aerial photography using stereo photogrammetric methods.

This map is created from a variety of data sources, and may not reflect the most current conditions in any one location and may not be completely accurate or up to date. All map features are approximately within five feet of their true location. This map may not be the same as a map of the same area plotted at an earlier time as the data is continuously updated. Use of this map, other than for general planning purposes is not recommended. - Copyright 1988

Key Map

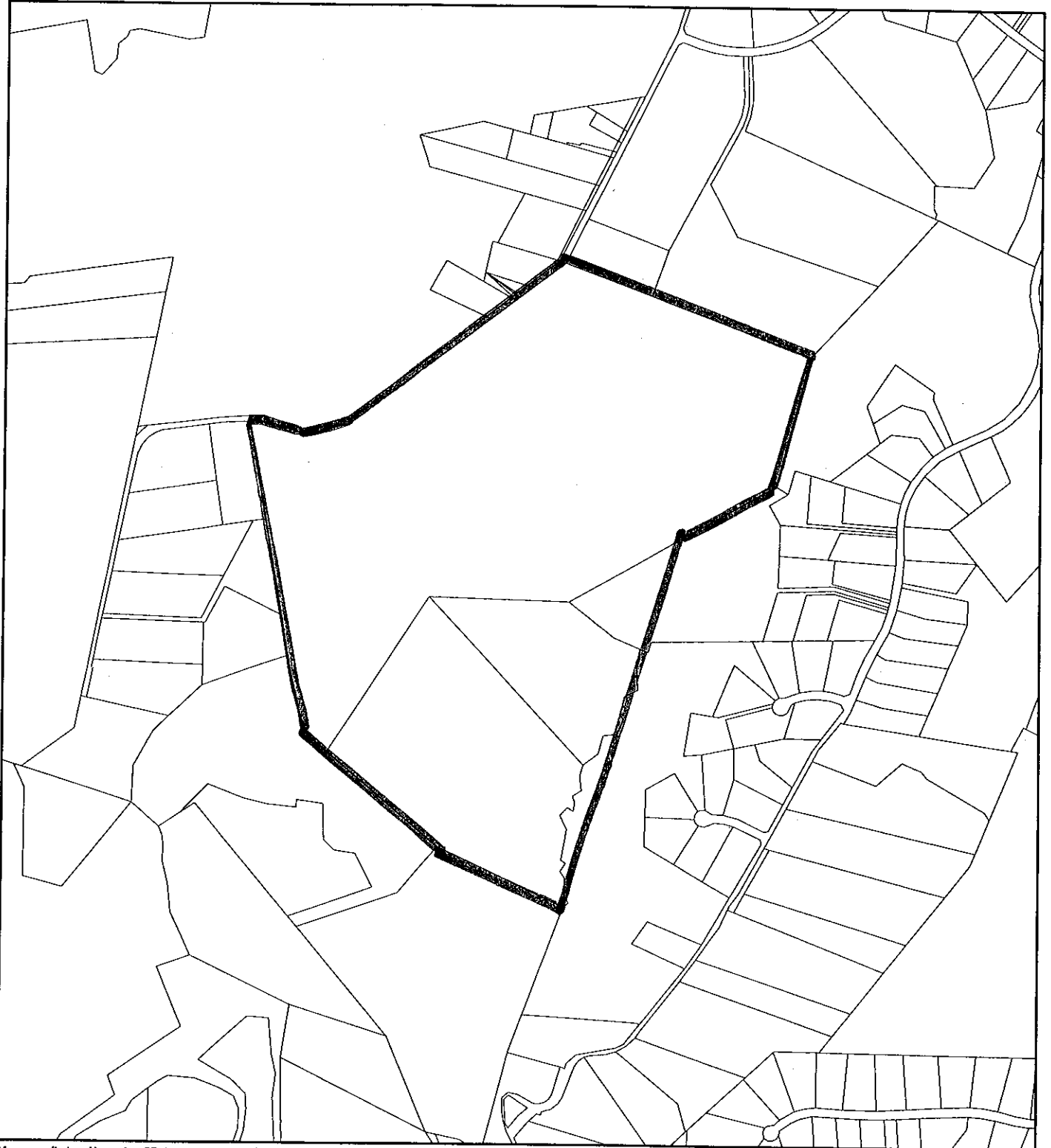


N



1 : 12000

VICINITY MAP FOR  
**FINNEGAN FARM (1-02043)**



Map compiled on November 05, 2001 at 4:01 PM | Site located on base sheet no - 218NW15

**NOTICE**

The planimetric, property, and topographic information shown on this map is based on copyrighted Map Products from the Montgomery County Department of Park and Planning of the Maryland - National Capital Park and Planning Commission, and may not be copied or reproduced without written permission from M-NCPPC.

Property lines are compiled by adjusting the property lines to topography created from aerial photography and should not be interpreted as actual field surveys. Planimetric features were compiled from 1:14400 scale aerial photography using stereo photogrammetric methods.

This map is created from a variety of data sources, and may not reflect the most current conditions in any one location and may not be completely accurate or up to date. All map features are approximately within five feet of their true location. This map may not be the same as a map of the same area plotted at an earlier time as the data is continuously updated. Use of this map, other than for general planning purposes is not recommended. - Copyright 1998

