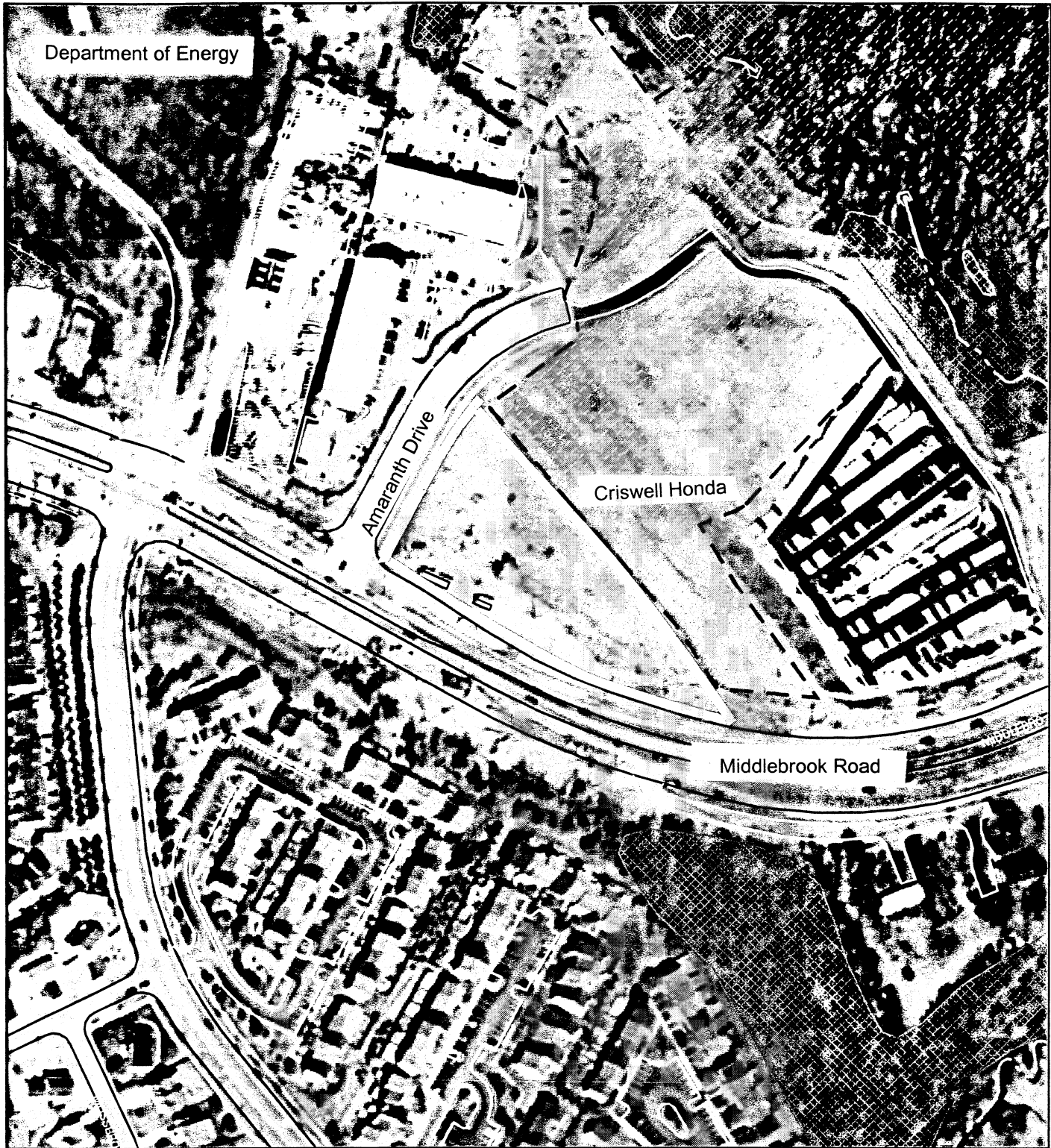


TRANSIT STATION (226NW12)



Map compiled on March 13, 2003 at 1:37 PM | Site located on base sheet no - 227NW12 | Date of Orthophotos - March 1998 | Orthophoto Images Licensed from VARGIS LLC.

NOTICE

The planimetric, property, and topographic information shown on this map is based on copyrighted Map Products from the Montgomery County Department of Park and Planning of the Maryland -National Capital Park and Planning Commission, and may not be copied or reproduced without written permission from M-NCPPC.

Property lines are compiled by adjusting the property lines to topography created from aerial photography and should not be interpreted as actual field surveys. Planimetric features were compiled from 1:14400 scale aerial photography using stereo photogrammetric methods.

This map is created from a variety of data sources, and may not reflect the most current conditions in any one location and may not be completely accurate or up to date. All map features are approximately within five feet of their true location. This map may not be the same as a map of the same area plotted at an earlier time as the data is continuously updated. Use of this map, other than for general planning purposes is not recommended. - Copyright 1998

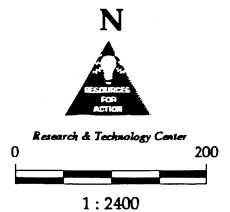
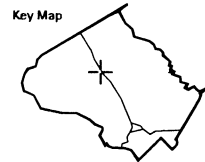
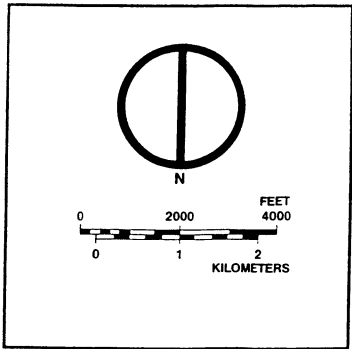
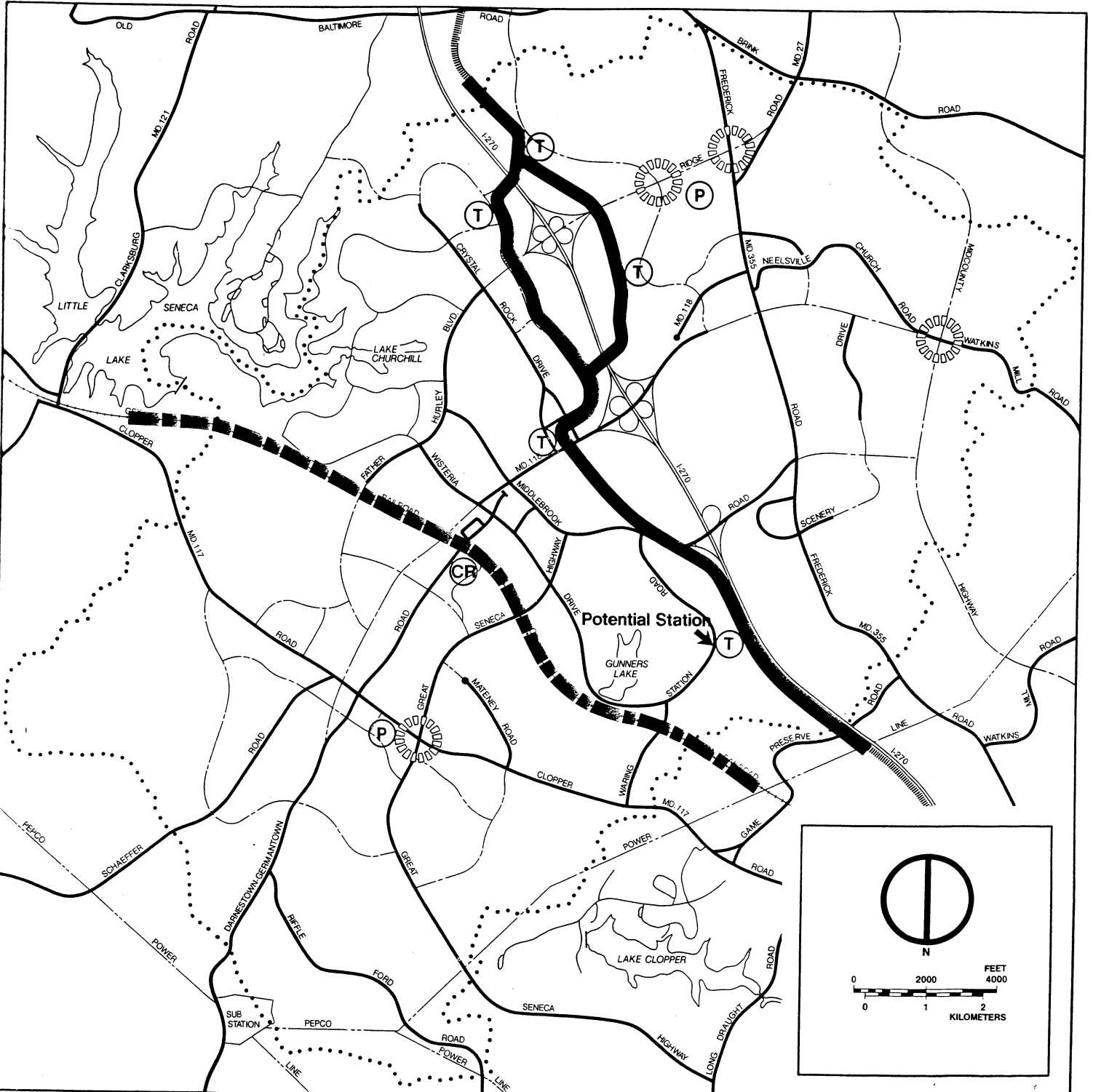


Figure 2

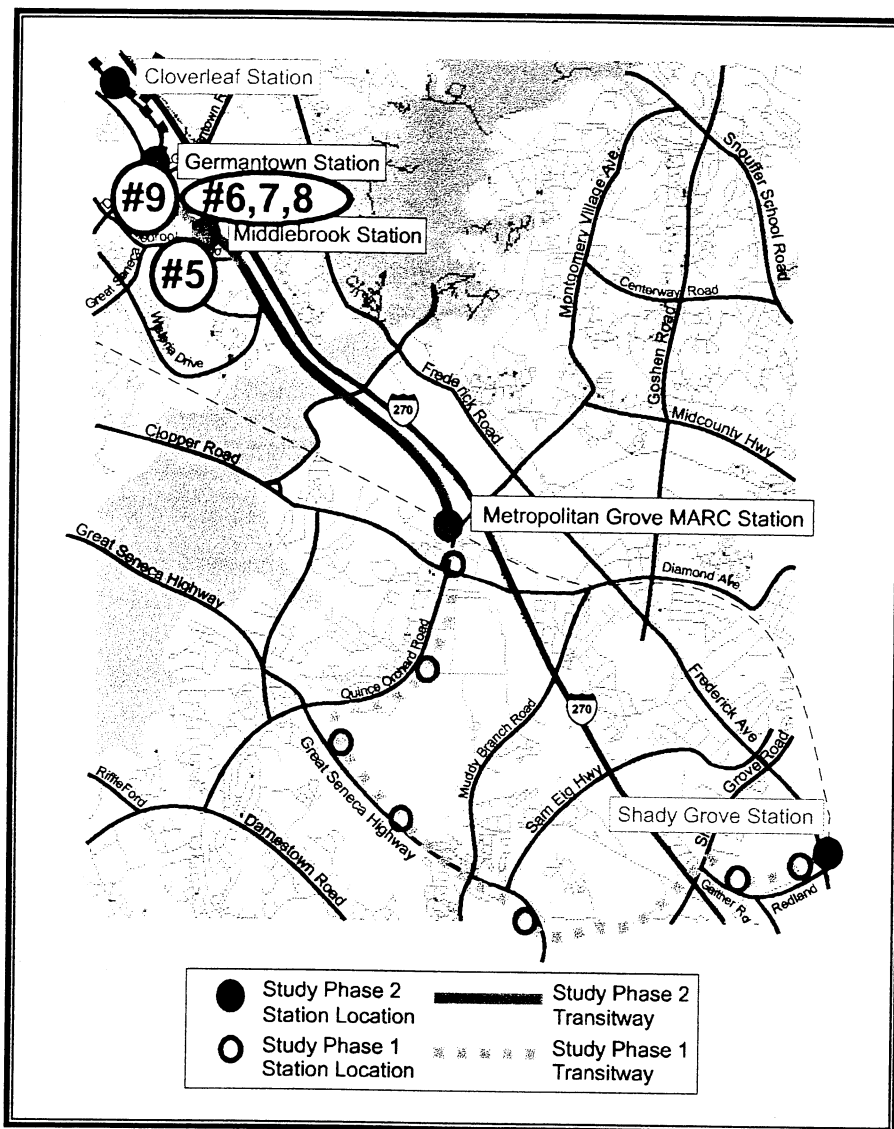


Existing and Proposed Transit Facilities

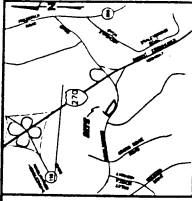
- Commuter Rail
- * Corridor City Transit Easement Alignment
- Commuter Rail Station
- Park-N-Ride Location
- Proposed Transit Stations

* These and other alternative Alignments are being studied as part of the Corridor Cities Transit Easement Study-See Master Plan and Figure 39.

**Map 3: Study Issues - Locations #5, #6, #7, #8, and #9,
Metropolitan Grove MARC Station to Germantown Town Center**



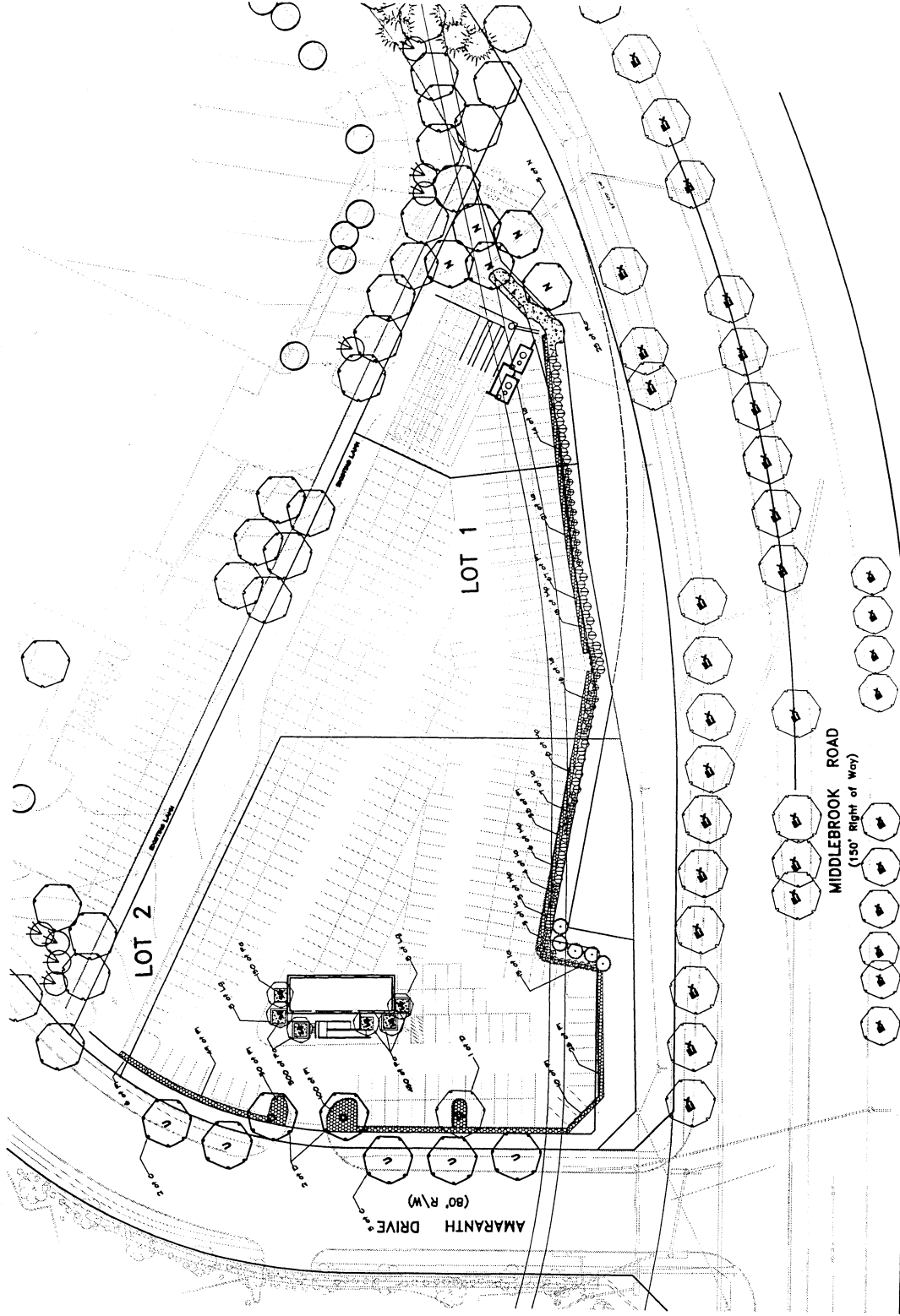
20.1



VICINITY MAP
SCALE 1" = 8,000'

LEGEND

	Existing Tree
	Proposed Shade Tree
	Proposed Ornamental Tree
	Proposed Shrub
	Proposed Hedge
	Proposed Ground Cover

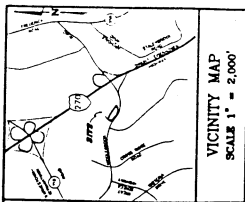


LANDSCAPE PLAN
LOTS 1 and 2, BLOCK "A"
MIDDLEBROOK INDUSTRIAL PARK
PHASE ONE - Temporary Auto Sales Trailer
8TH ELECTRON DISTRICT - MIDDLEBROOK COUNTY - MARYLAND

Macris, Hendricks & Glascock, P.A.
Engineers • Planners • Surveyors
1001 E. Main Street, Suite 100
Middlebrook, Maryland 21771
www.mhga.com

Project	Phase	Date	Scale
04/16/03	Final	11/11/03	1" = 8,000'

NO.	DATE	DESCRIPTION	BY



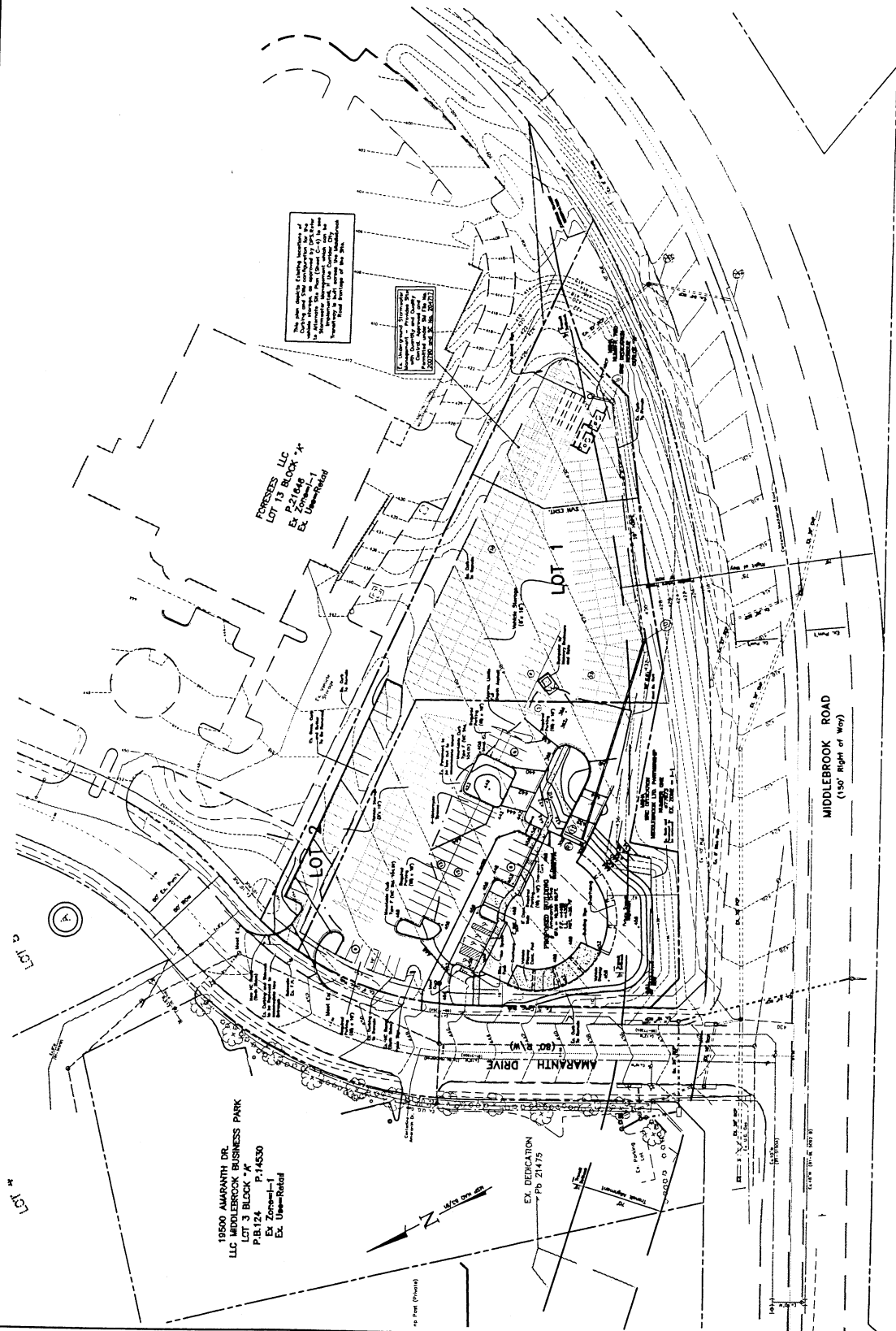
VICINITY MAP
SCALE 1" = 2,000'

C-2

SITE DEVELOPMENT PLAN
LOTS 1 and 2, BLOCK "A"
MIDDLEBROOK INDUSTRIAL PARK
 AUTOMOBILE SHOWROOM - Phase Two
 9TH ELECTION DISTRICT - MONTGOMERY COUNTY - MARYLAND

Designed by: **Macris, Hendricks & Glascock, P.A.**
 2200 South 19th Street
 Suite 100
 Rockville, MD 20850
 (301) 978-8888
 Fax: (301) 978-8888
 www.mhgl.com

Engineers: **Suncofs**
 12/7/02 13-20
 14-100-71 2, 3, 4, 5

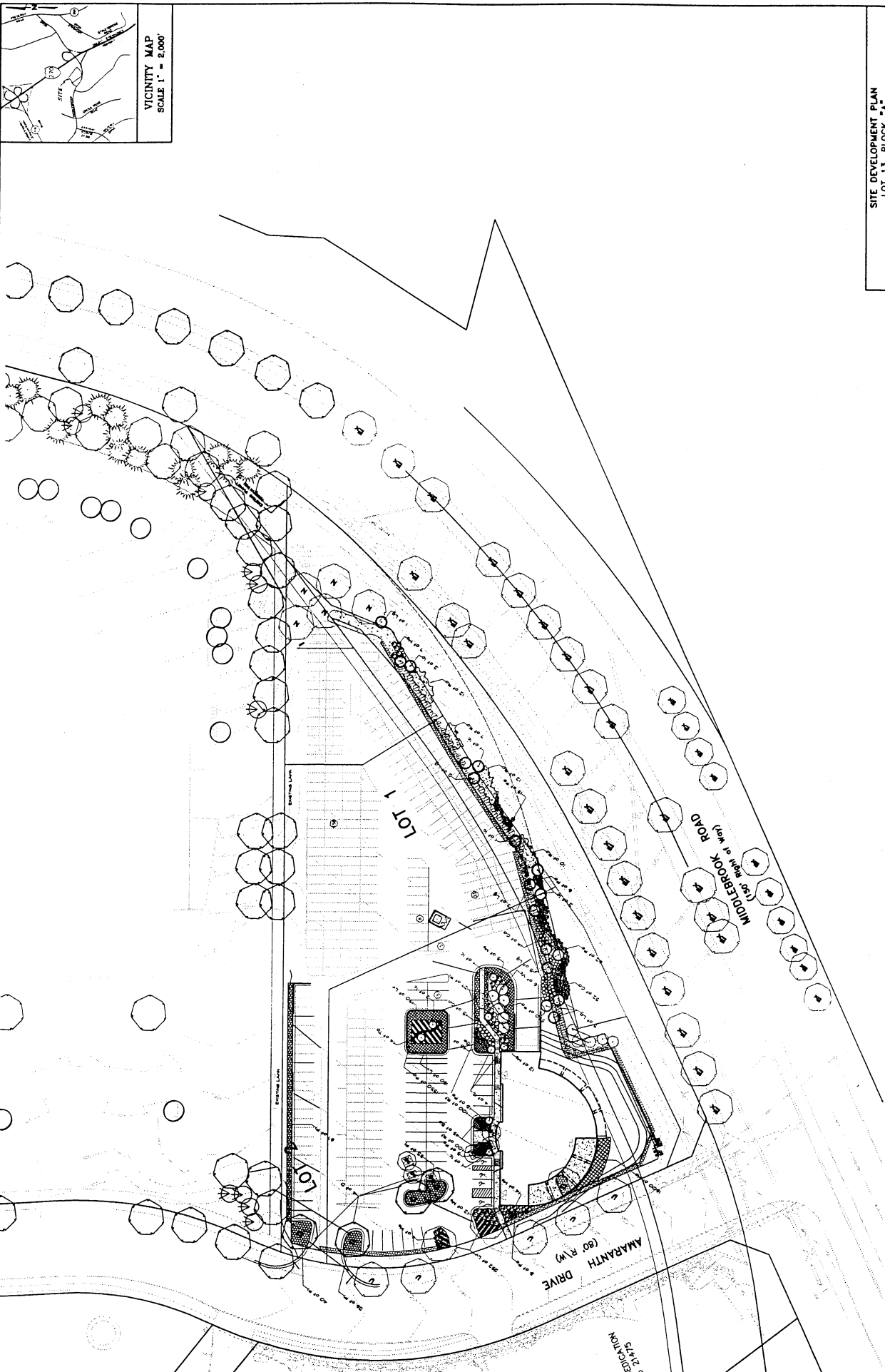


15500 AMARANTH DR.
 LLC MIDDLEBROOK BUSINESS PARK
 P.B. 13, BLOCK "A"
 P. 14530
 Ex. Zones - P, U
 Ex. Use - Retail

FOUNTER'S LLC
 LOT 13 & 14
 P. 217646
 Ex. Zones - P, U
 Ex. Use - Retail

EX. DEDICATION
 Pp. 21475

Call "Miss Utility" at 1-800-257-7777, 48 hours in advance of any excavation work. The contractor shall be responsible for obtaining the necessary permits and for the safety of the public. The contractor shall be responsible for the safety of the workers and for the safety of the public. The contractor shall be responsible for the safety of the workers and for the safety of the public.



SITE DEVELOPMENT PLAN
LOT 13, BLOCK "A"
MIDDLEBROOK INDUSTRIAL PARK
 HONDA DEALERSHIP
 9TH ELECTION DISTRICT - MONTGOMERY COUNTY - MARYLAND

Project No.	15-00-003
Client	Honda of America, Inc.
Site	13150 Middlebrook Road
City	Beltsville, MD
County	Montgomery County
State	Maryland
Scale	1" = 200'
Date	04/16/03

Macris, Hendricks & Glascock, P.A.
 Engineers • Planners • Surveyors
 13150 Middlebrook Road
 Beltsville, MD 20814
 (301) 344-0033
 www.mhga.com

Call "Miss Utility" at 1-800-257-7777, 48 hours prior to the start of work. In the event of an emergency, call 911. This drawing is the property of Macris, Hendricks & Glascock, P.A. and is not to be reproduced or used in any manner without the written consent of Macris, Hendricks & Glascock, P.A.

