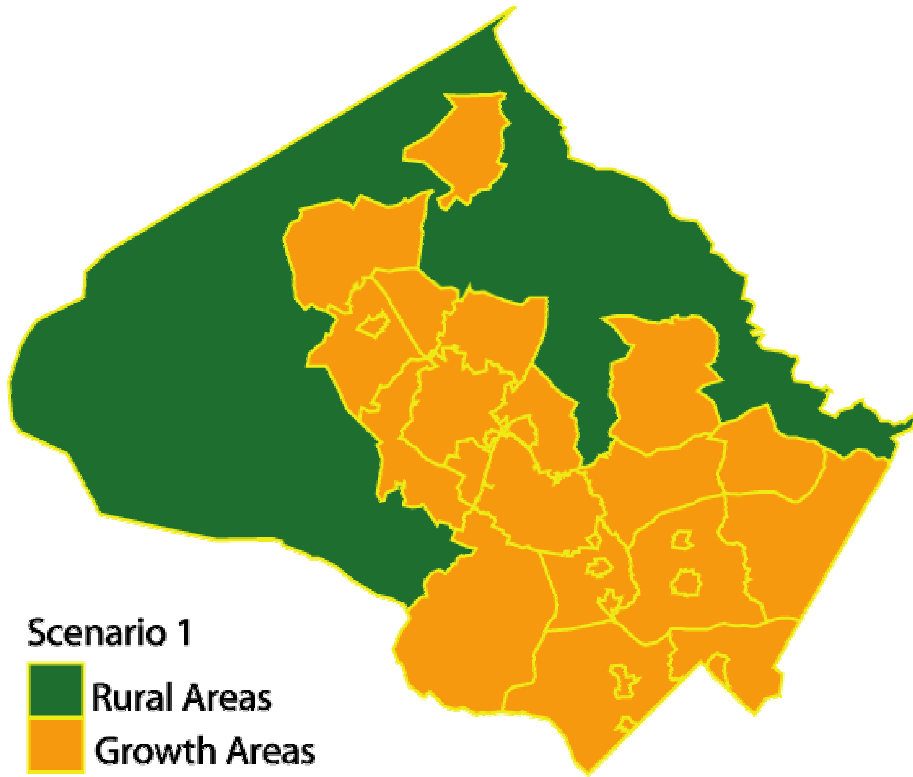


Geography 1

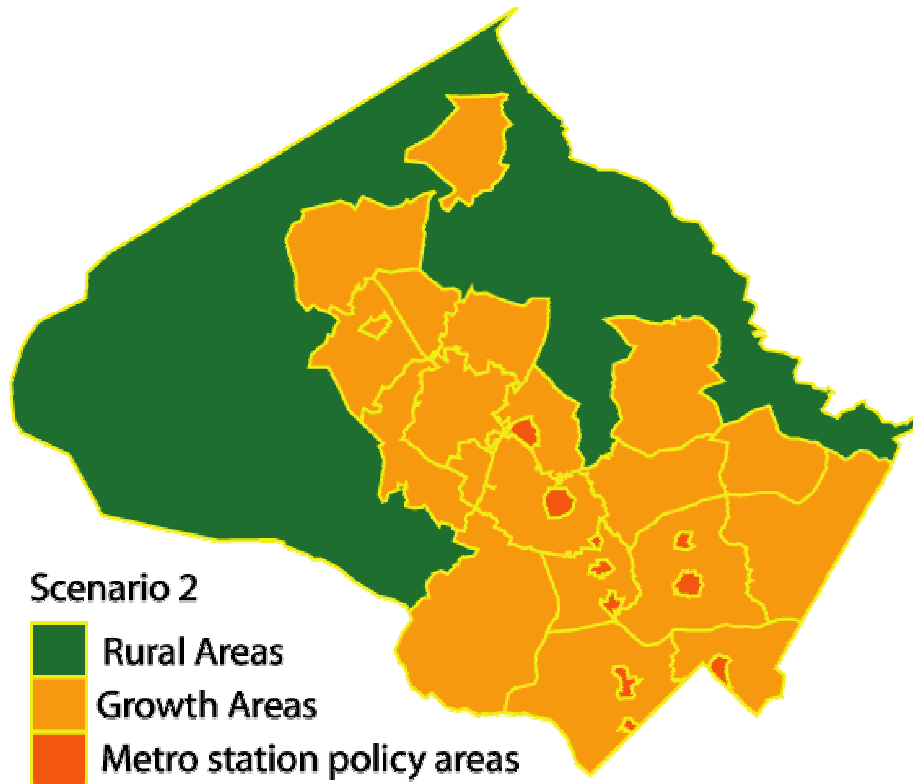
2 Subareas: “Growth Areas” and Rural Areas



| Households | | | | | | | |
|-------------------------|-----------------------|------------------------------|-----------------------|------------------------------|-----------------------------------|-----------------------|----------------------|
| Area | 1990 Total Households | Avg. Annual Growth 1990-2003 | 2000 Total Households | Avg. Annual Growth 2003-2030 | Avg. Annual Growth Rate | 2030 Total Households | Residential Pipeline |
| Growth Areas | 269,272 | 3,809 | 318,788 | 2,890 | 0.9% | 396,805 | 30,208 |
| Rural | 12,728 | 309 | 16,745 | 239 | 1.4% | 23,195 | 1,995 |
| Montgomery County Total | 282,000 | 4,118 | 335,533 | 3,128 | 0.9% | 420,000 | 32,203 |
| Jobs | | | | | | | |
| Area | 1990 Total | Avg. Annual Growth 1990-2003 | 2003 Total Jobs | Avg. Annual Growth 2003-2030 | Avg. Annual Growth Rate 2003-2030 | 2030 Total Jobs | Jobs Pipeline |
| Growth Areas | 458,751 | 7,409 | 555,067 | 5,150 | 0.9% | 694,106 | 114,583 |
| Rural | 7,219 | 209 | 9,933 | 36 | 0.4% | 10,894 | 734 |
| Montgomery County Total | 465,970 | 7,618 | 565,000 | 5,185 | 0.9% | 705,000 | 115,317 |

Geography 2

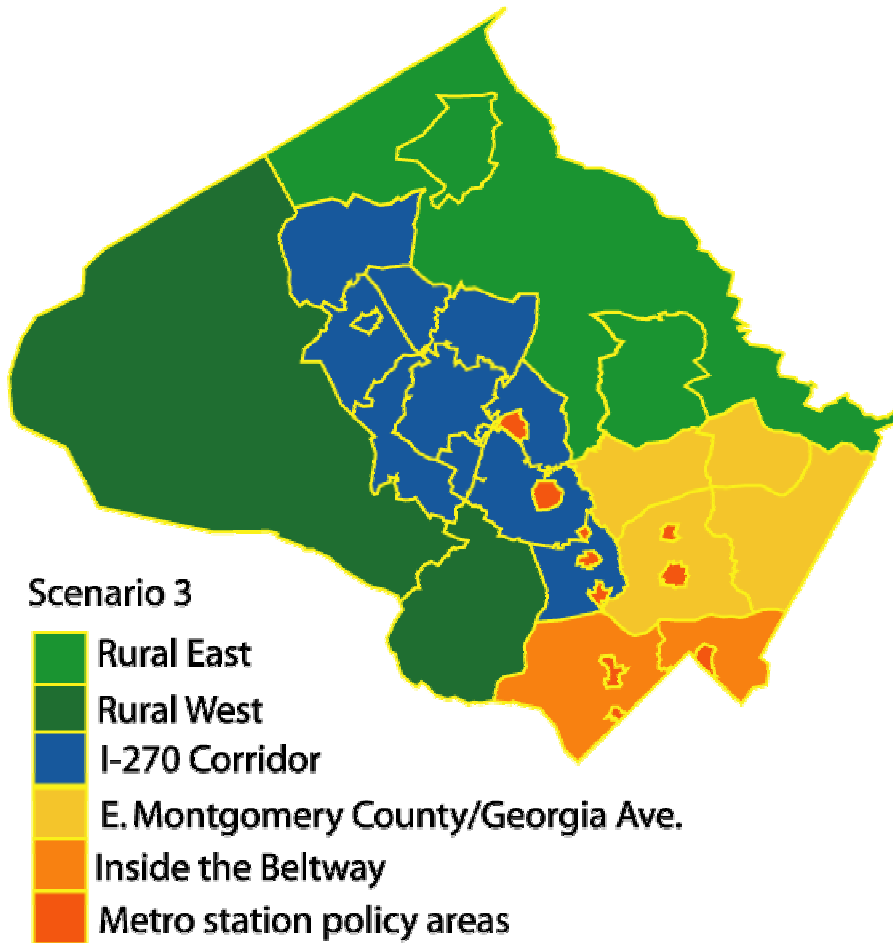
3 Subareas: Metro Station Areas, Growth Areas, and Rural Areas



| HOUSEHOLDS | | | | | | | |
|----------------------------|-----------------------|--------------------|-----------------------|--------------------|-------------------------|-----------------------|----------------------|
| Area | 1990 Total Households | Avg. Annual Growth | 2000 Total Households | Avg. Annual Growth | Avg. Annual Growth Rate | 2030 Total Households | Residential Pipeline |
| Metro Station Policy Areas | 18,343 | 346 | 22,842 | 747 | 3.3% | 43,015 | 5,076 |
| Growth Areas | 250,929 | 3,463 | 295,946 | 2,142 | 0.7% | 353,790 | 25,132 |
| Rural | 12,728 | 309 | 16,745 | 239 | 1.4% | 23,195 | 1,995 |
| Montgomery County Total | 282,000 | 4,118 | 335,533 | 3,128 | 0.9% | 420,000 | 27,127 |
| JOBS | | | | | | | |
| Area | 1990 Total | Avg. Annual Growth | 2003 Total Jobs | Avg. Annual Growth | Avg. Annual Growth Rate | 2030 Total Jobs | Jobs Pipeline |
| Metro Station Policy Areas | 114,234 | 547 | 121,346 | 804 | 0.7% | 143,063 | 12,265 |
| Growth Areas | 344,517 | 6,862 | 433,721 | 4,345 | 1.0% | 551,043 | 102,318 |
| Rural | 7,219 | 209 | 9,933 | 36 | 0.4% | 10,894 | 734 |
| Montgomery County Total | 465,970 | 7,618 | 565,000 | 5,185 | 0.9% | 705,000 | 103,052 |

Geography 3

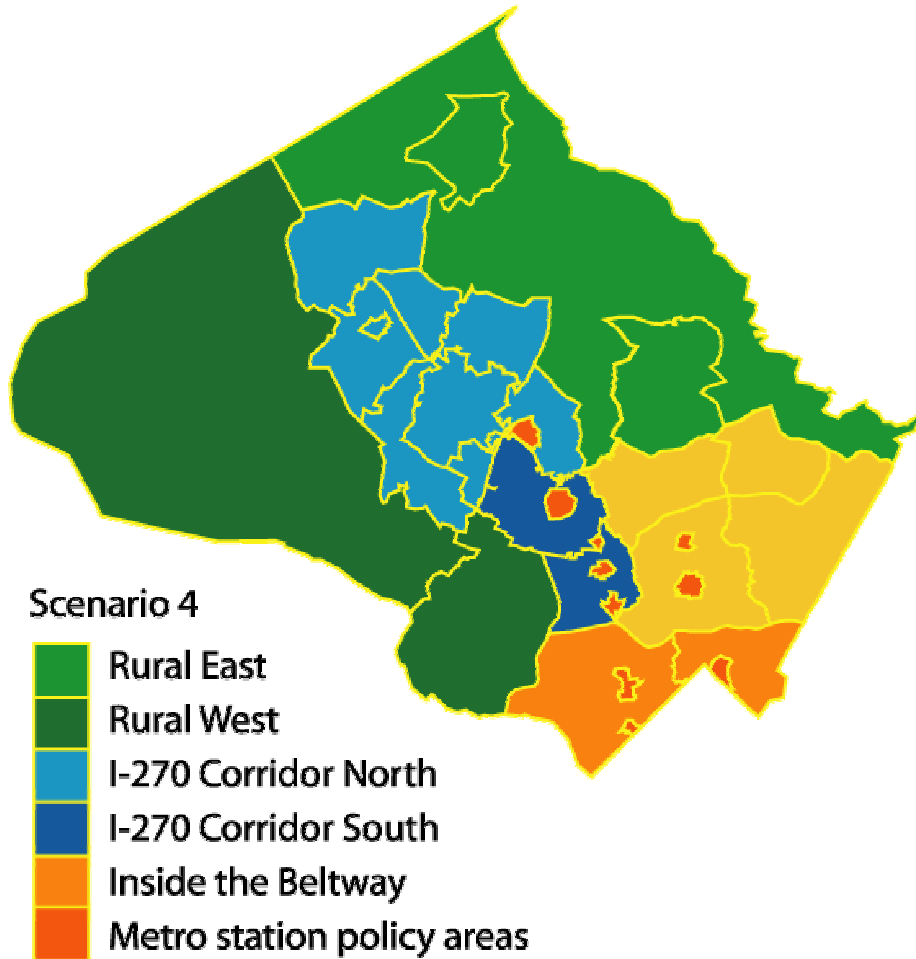
Modified TRPII Areas, with Metro Station Areas Broken Out



| HOUSEHOLDS | | | | | | | |
|-------------------------------|-----------------------|--------------------|-----------------------|--------------------|-------------------------|-----------------------|----------------------|
| Areas | 1990 Total Households | Avg. Annual Growth | 2000 Total Households | Avg. Annual Growth | Avg. Annual Growth Rate | 2030 Total Households | Residential Pipeline |
| Metro Station Policy Areas | 18,343 | 346 | 22,842 | 747 | 3.3% | 43,015 | 5,076 |
| Inside the Beltway | 52,481 | 369 | 57,279 | 130 | 0.2% | 60,796 | 657 |
| E. Montgomery Co./Georgia Ave | 81,306 | 557 | 88,541 | 272 | 0.3% | 95,883 | 3,767 |
| I-270 Corridor | 91,324 | 2,132 | 119,043 | 1,564 | 1.3% | 161,283 | 19,035 |
| Rural West | 12,728 | 309 | 16,745 | 239 | 1.4% | 23,195 | 1,995 |
| Rural East | 17,664 | 378 | 22,579 | 203 | 0.9% | 28,071 | |
| Montgomery County Total | 282,000 | 4,118 | 335,533 | 3,128 | 0.9% | 420,000 | 32,203 |
| JOBS | | | | | | | |
| Areas | 1990 Total | Avg. Annual Growth | 2003 Total Jobs | Avg. Annual Growth | Avg. Annual Growth Rate | 2030 Total Jobs | Jobs Pipeline |
| Metro Station Policy Areas | 114,234 | 547 | 121,346 | 804 | 0.7% | 143,063 | 12,265 |
| Inside the Beltway | 59,781 | 862 | 70,981 | 196 | 0.3% | 76,273 | 1,377 |
| E. Montgomery Co./Georgia Ave | 53,401 | 488 | 59,745 | 388 | 0.6% | 70,230 | 4,061 |
| I-270 Corridor | 212,644 | 5,245 | 280,825 | 3,722 | 1.3% | 381,312 | 96,153 |
| Rural West | 7,219 | 209 | 9,933 | 36 | 0.4% | 10,894 | 734 |
| Rural East | 11,596 | 193 | 14,099 | 30 | 0.2% | 14,905 | |
| Montgomery County Total | 465,970 | 7,618 | 565,000 | 5,185 | 0.9% | 705,000 | 115,317 |

Geography 4

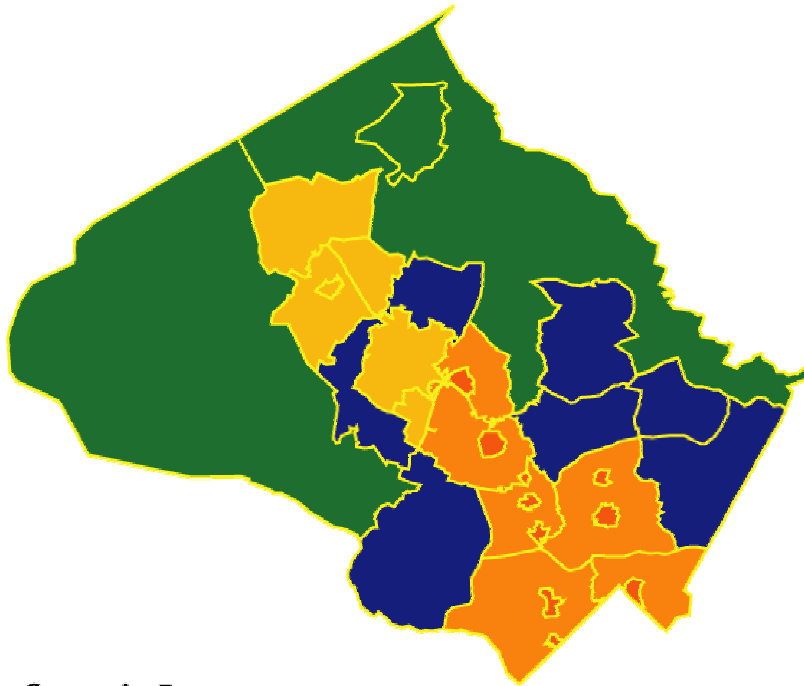
Modified TRPII Areas, I-270 North and South, and Metro Station Areas Broken Out



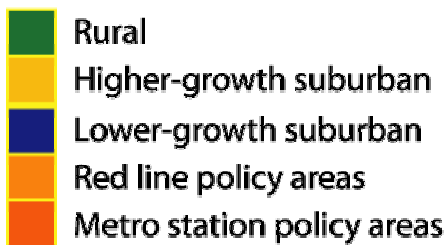
| HOUSEHOLDS | | | | | | | |
|-------------------------------|-----------------------|--------------------|-----------------------|--------------------|-------------------------|-----------------------|----------------------|
| Areas | 1990 Total Households | Avg. Annual Growth | 2000 Total Households | Avg. Annual Growth | Avg. Annual Growth Rate | 2030 Total Households | Residential Pipeline |
| Metro Station Policy Areas | 18,343 | 346 | 22,842 | 747 | 3.3% | 43,015 | 5,076 |
| Inside the Beltway | 52,481 | 369 | 57,279 | 130 | 0.2% | 60,796 | 657 |
| E. Montgomery Co./Georgia Ave | 81,306 | 557 | 88,541 | 272 | 0.3% | 95,883 | 3,767 |
| I-270 Corridor South | 28,471 | 322 | 32,652 | 316 | 1.0% | 41,177 | 5,675 |
| I-270 Corridor North | 62,853 | 1,811 | 86,392 | 1,249 | 1.4% | 120,106 | 13,360 |
| Rural West | 12,728 | 309 | 16,745 | 239 | 1.4% | 23,195 | |
| Rural East | 17,664 | 378 | 22,579 | 203 | 0.9% | 28,071 | 3,668 |
| Montgomery County Total | 282,000 | 4,118 | 335,533 | 3,128 | 0.9% | 420,000 | 32,203 |
| JOBS | | | | | | | |
| Areas | 1990 Total | Avg. Annual Growth | 2003 Total Jobs | Avg. Annual Growth | Avg. Annual Growth Rate | 2030 Total Jobs | Jobs Pipeline |
| Metro Station Policy Areas | 114,234 | 547 | 121,346 | 804 | 0.7% | 143,063 | 12,265 |
| Inside the Beltway | 59,781 | 862 | 70,981 | 196 | 0.3% | 76,273 | 1,377 |
| E. Montgomery Co./Georgia Ave | 53,401 | 488 | 59,745 | 388 | 0.6% | 70,230 | 4,061 |
| I-270 Corridor South | 117,748 | 2,215 | 146,548 | 1,451 | 1.0% | 185,721 | 37,620 |
| I-270 Corridor North | 94,896 | 3,029 | 134,277 | 2,271 | 1.7% | 195,590 | 58,533 |
| Rural West | 7,219 | 209 | 9,933 | 36 | 0.4% | 10,894 | |
| Rural East | 11,596 | 193 | 14,099 | 30 | 0.2% | 14,905 | 1,461 |
| Montgomery County Total | 465,970 | 7,618 | 565,000 | 5,185 | 0.9% | 705,000 | 115,317 |

Geography 5

Metro Station Areas, Red Line Area, Lower and High-Growth Suburban, and Rural



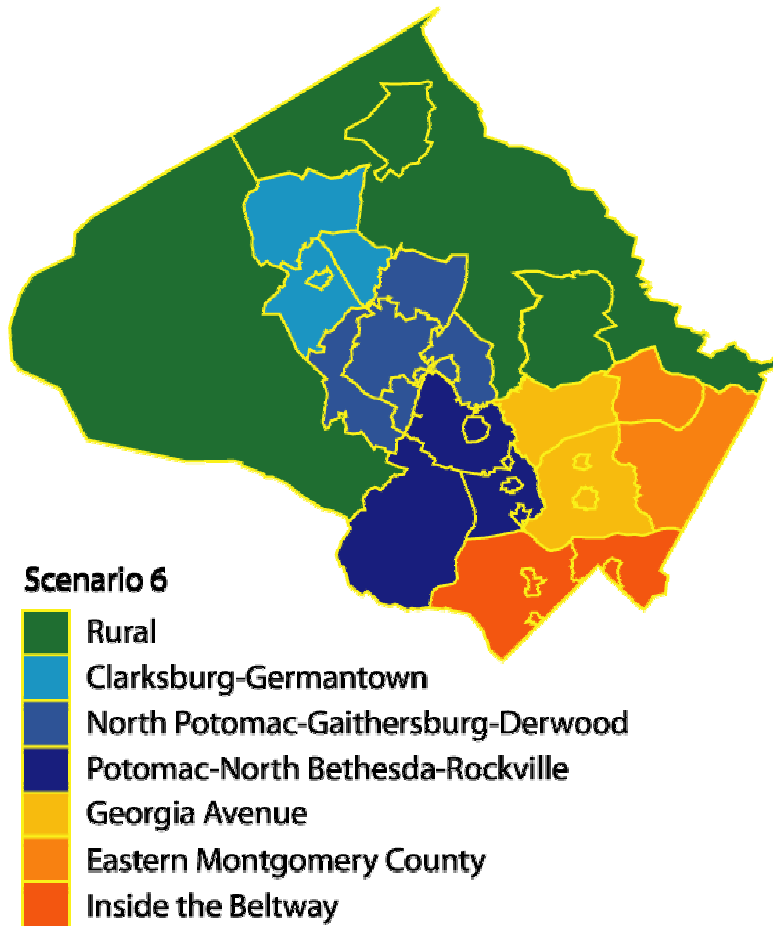
Scenario 5



| HOUSEHOLDS | | | | | | | |
|----------------------------|-----------------------|--------------------|-----------------------|--------------------|-------------------------|-----------------------|----------------------|
| Areas | 1990 Total Households | Avg. Annual Growth | 2000 Total Households | Avg. Annual Growth | Avg. Annual Growth Rate | 2030 Total Households | Residential Pipeline |
| Metro Station Policy Areas | 18,343 | 346 | 22,842 | 747 | 3.3% | 43,015 | 5,076 |
| Red Line Policy Areas | 52,481 | 369 | 57,279 | 130 | 0.2% | 60,796 | 6,649 |
| Lower-Growth Suburban | 95,646 | 1,188 | 111,088 | 412 | 0.4% | 122,205 | 5,346 |
| Higher-Growth Suburban | 35,047 | 1,433 | 53,679 | 1,110 | 2.1% | 83,648 | 12,799 |
| Rural | 15,671 | 342 | 20,116 | 272 | 1.4% | 27,456 | 2,745 |
| Montgomery County Total | 282,000 | 4,118 | 335,533 | 3,128 | 0.9% | 420,000 | 32,203 |
| JOBS | | | | | | | |
| Areas | 1990 Total | Avg. Annual Growth | 2003 Total Jobs | Avg. Annual Growth | Avg. Annual Growth Rate | 2030 Total Jobs | Jobs Pipeline |
| Metro Station Policy Areas | 114,234 | 547 | 121,346 | 804 | 0.7% | 143,063 | 12,265 |
| Red Line Policy Areas | 59,781 | 862 | 70,981 | 196 | 0.3% | 76,273 | 40,900 |
| Lower-Growth Suburban | 67,641 | 819 | 78,287 | 451 | 0.6% | 90,461 | 5,090 |
| Higher-Growth Suburban | 63,293 | 2,544 | 96,368 | 2,008 | 2.1% | 150,584 | 56,188 |
| Rural | 8,959 | 281 | 12,606 | 39 | 0.3% | 13,666 | 1,123 |
| Montgomery County Total | 465,970 | 7,618 | 565,000 | 5,185 | 0.9% | 705,000 | 115,317 |

Geography 6

Modified TRPII Districts



| HOUSEHOLDS | | | | | | | |
|-------------------------------|-----------------------|--------------------|-----------------------|--------------------|-------------------------|-----------------------|----------------------|
| Areas | 1990 Total Households | Avg. Annual Growth | 2000 Total Households | Avg. Annual Growth | Avg. Annual Growth Rate | 2030 Total Households | Residential Pipeline |
| Inside the Beltway | 65,002 | 5,778 | 440,252 | 4,663 | 1.1% | 566,141 | 48,645 |
| Georgia Avenue | 55,233 | 314 | 59,318 | 289 | 0.5% | 67,117 | 2,439 |
| Eastern Montgomery Co. | 28,935 | 261 | 32,323 | 113 | 0.4% | 35,385 | 1,886 |
| Clarksburg - Germantown | 17,627 | 891 | 29,206 | 675 | 2.3% | 47,436 | 9,374 |
| N. Potomac/Derwood/G'burg | 45,561 | 921 | 57,533 | 648 | 1.1% | 75,017 | 3,986 |
| Potomac/N. Bethesda/Rockville | 45,849 | 606 | 53,726 | 648 | 1.2% | 71,234 | 7,427 |
| Rural | 15,671 | 342 | 20,116 | 272 | 1.4% | 27,456 | 2,745 |
| Montgomery County Total | 302,813 | 9,372 | 724,795 | 7,421 | 0.9% | 925,171 | 78,388 |
| JOBS | | | | | | | |
| Areas | 1990 Total | Avg. Annual Growth | 2003 Total Jobs | Avg. Annual Growth | Avg. Annual Growth Rate | 2030 Total Jobs | Jobs Pipeline |
| Inside the Beltway | 612,943 | 11,910 | 771,470 | 8,600 | 1.1% | 1,003,671 | 207,099 |
| Georgia Avenue | 36,278 | 225 | 39,208 | 74 | 0.2% | 41,197 | 478 |
| Eastern Montgomery Co. | 28,791 | 319 | 32,934 | 332 | 1.0% | 41,911 | 3,669 |
| Clarksburg - Germantown | 16,026 | 857 | 27,164 | 1,066 | 3.9% | 55,955 | 25,255 |
| N. Potomac/Derwood/G'burg | 82,656 | 1,928 | 111,414 | 1,224 | 1.1% | 144,459 | 33,491 |
| Potomac/N. Bethesda/Rockville | 146,429 | 2,516 | 179,135 | 1,610 | 0 | 222,594 | 40,716 |
| Rural | 8,959 | 281 | 12,606 | 39 | 0.3% | 13,666 | 1,123 |
| Montgomery County Total | 960,873 | 18,355 | 1,206,868 | 13,278 | 0.9% | 1,565,366 | 315,500 |