

Item #5



THE MARYLAND-NATIONAL CAPITAL PARK AND PLANNING COMMISSION

M E M O R A N D U M

DATE: June 6, 2003
TO: Montgomery County Planning Board
FROM: A. Malcolm Shaneman
Development Review Division
(301) 495-4587
SUBJECT: Informational Maps for Subdivision Items on the
Planning Board's Agenda for June 12, 2003.

-

Attached are copies of plan drawings for Item #05. This subdivision item is scheduled for Planning Board consideration on June 12, 2003. The item is further identified as follows:

Agenda Item #05 - Preliminary Plan 1-92072A
Georgetown Preparatory School

Attachment

VICINITY MAP FOR

GEORGETOWN PREPARATORY SCHOOL (1-92072A)



Map compiled on January 07, 2003 at 9:51 AM | Site located on base sheet no - 213NW05

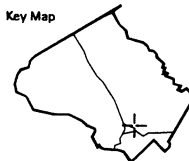
NOTICE

The planimetric, property, and topographic information shown on this map is based on copyrighted Map Products from the Montgomery County Department of Park and Planning of the Maryland-National Capital Park and Planning Commission, and may not be copied or reproduced without written permission from M-NCPPC.

Property lines are compiled by adjusting the property lines to topography created from aerial photography and should not be interpreted as actual field surveys. Planimetric features were compiled from 1:14400 scale aerial photography using stereo photogrammetric methods.

This map is created from a variety of data sources, and may not reflect the most current conditions in any one location and may not be completely accurate or up to date. All map features are approximately within five feet of their true location. This map may not be the same as a map of the same area plotted at an earlier time as the data is continuously updated. Use of this map, other than for general planning purposes is not recommended. - Copyright 1998

Key Map



N



Research & Technology Center



1 : 7200

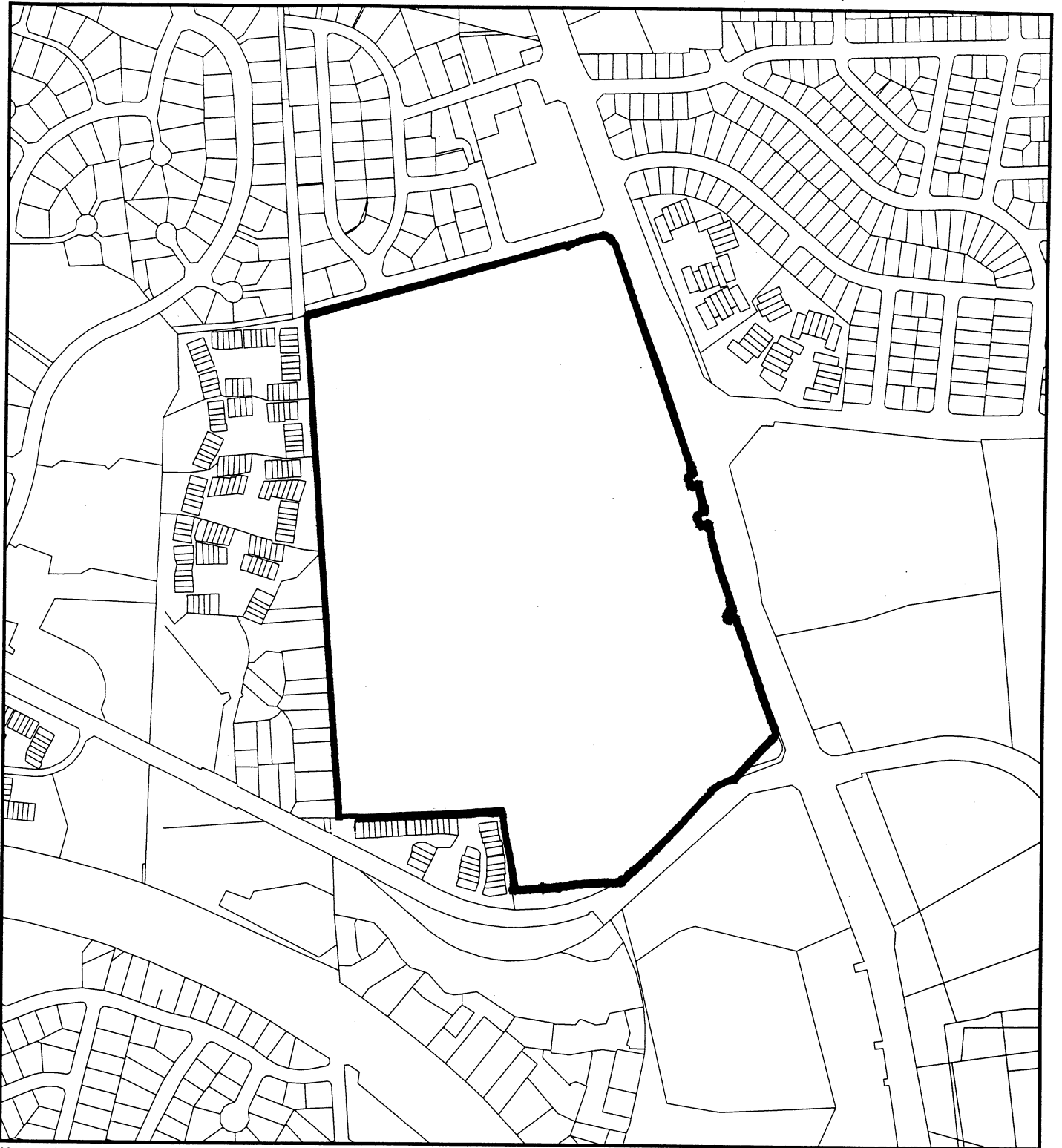
M-NCPPC

MONTGOMERY COUNTY DEPARTMENT OF PARK AND PLANNING
THE MARYLAND-NATIONAL CAPITAL PARK AND PLANNING COMMISSION

8787 Georgia Avenue - Silver Spring, Maryland 20910-3760

VICINITY MAP FOR

GEORGETOWN PREPARATORY SCHOOL (1-92072A)



Map compiled on September 11, 1999 at 0:55 AM | Site located on base sheet no - 213NW05

NOTICE

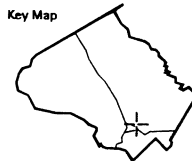
The planimetric, property, and topographic information shown on this map is based on copyrighted Map Products from the Montgomery County Department of Park and Planning of the Maryland - National Capital Park and Planning Commission, and may not be copied or reproduced without written permission from M-NCPPC.

Property lines are compiled by adjusting the property lines to topography created from aerial photography and should not be interpreted as actual field surveys. Planimetric features were compiled from 1:14400 scale aerial photography using stereo photogrammetric methods.

This map is created from a variety of data sources, and may not reflect the most current conditions in any one location and may not be completely accurate or up to date. All map features are approximately within five feet of their true location. This map may not be the same as a map of the same area plotted at an earlier time as the data is continuously updated. Use of this map, other than for general planning purposes is not recommended. - Copyright 1998

MONTGOMERY COUNTY DEPARTMENT OF PARK AND PLANNING
THE MARYLAND-NATIONAL CAPITAL PARK AND PLANNING COMMISSION
8787 Georgia Avenue - Silver Spring, Maryland 20910-3760

Key Map



1 : 7200

OWNER'S DEDICATION

WE, GEORGETOWN PREPARATORY SCHOOL, INCORPORATED, A MARYLAND CORPORATION, OWNERS FOR THE PROPERTY SHOWN HEREON AND DESCRIBED IN THE SURVEYOR'S CERTIFICATE, HEREBY ADOP THIS PLAN OF SUBDIVISION, ESTABLISHING THE MINIMUM BUILDING RESTRICTION LINES.

THERE ARE NO SUITS, ACTIONS OF LAW, LEASES, LISTS, MORTGAGES OR TRUSTS AFFECTING THE PROPERTY SHOWN HEREON.

DATE: JANUARY 26, 1993

GEORGETOWN PREPARATORY SCHOOL, INC.

Raymond H. Kille *Rev. Thomas E. Roach, S.J.*
 ATTEST REV. THOMAS E. ROACH, S.J.

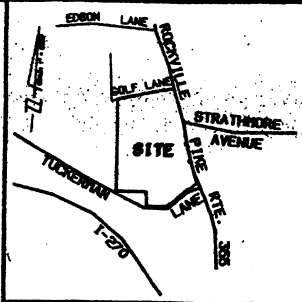
SURVEYOR'S CERTIFICATE

I HEREBY CERTIFY TO THE BEST OF MY KNOWLEDGE AND BELIEF THE PLAT SHOWN HEREON IS CORRECT, THAT IT IS A SUBDIVISION OF THE PROPERTIES ACQUIRED BY GEORGETOWN PREPARATORY SCHOOL, INCORPORATED, A MARYLAND CORPORATION FROM THE PRESIDENT AND DIRECTORS OF GEORGETOWN COLLEGE, A BODY CORPORATE BY DEED DATED AUGUST 21, 1928 AND RECORDED IN LIBER 366 AT FOLIO 32 AND FROM HARRY C. HARBETT AND DAVID F. HARBETT, HARRY J. T. KRAFT AND WINNER E. DRAFT BY DEED RECORDED JANUARY 12, 1932 IN LIBER 728 AT FOLIO 21 AMONG THE LAND RECORDS OF MONTGOMERY COUNTY, MARYLAND; AND THAT ALL PROPERTY CORNER MARKERS HAVE BEEN SET IN ACCORDANCE WITH CHAPTER 80, SECTION 24 & 25 OF THE MONTGOMERY COUNTY CODE.

THERE IS NO STREET DEDICATION BY THIS PLAT AND THE TOTAL AREA OF THE SUBDIVISION IS 3,933,657 SQ. FT. OR 90.30434 ACRES OF LAND.

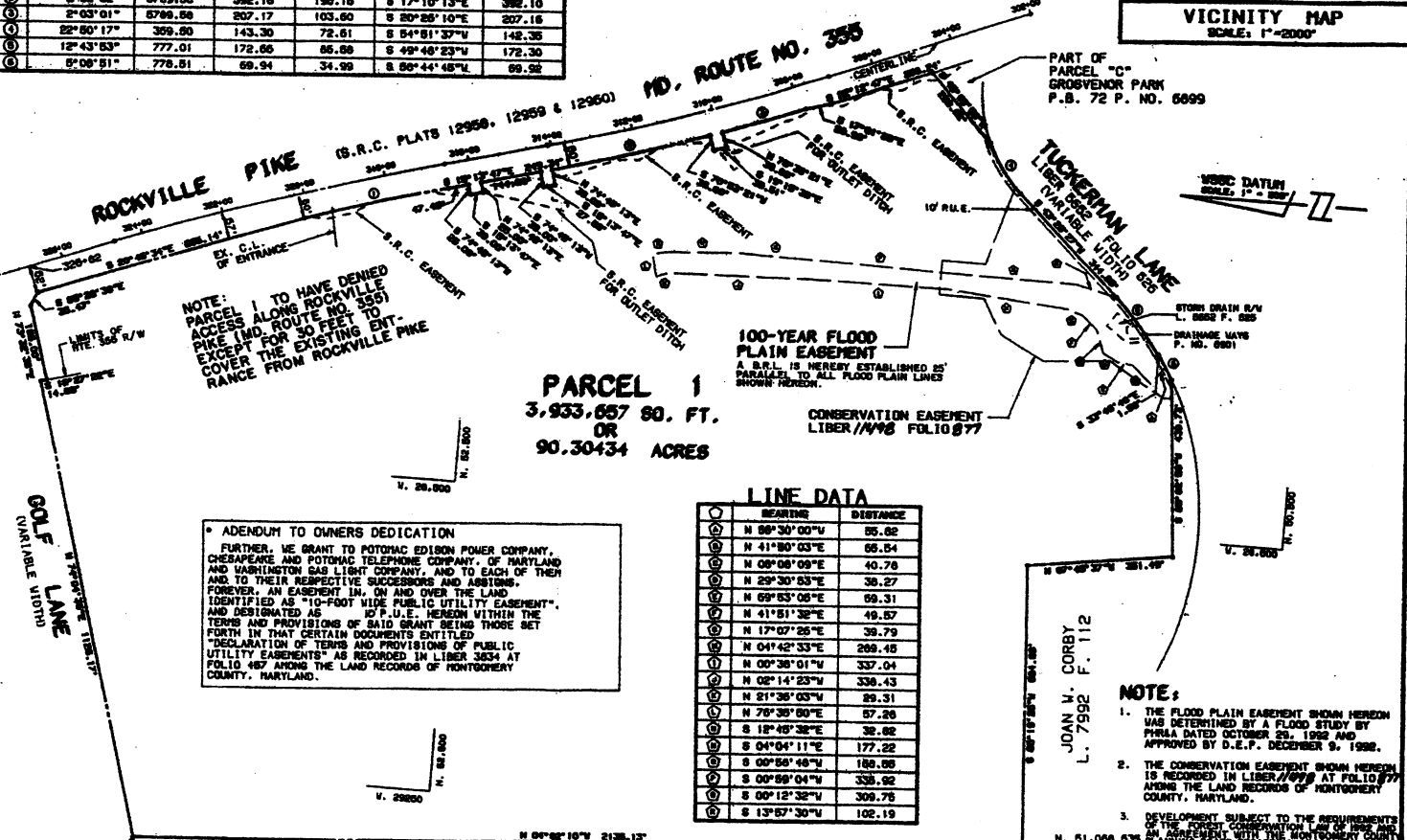
DATE: FEBRUARY 24, 1993

Raymond H. Kille *Richard E. Travers*
 RAYMOND H. KILLE RICHARD E. TRAVERS
 PROPERTY LINE SURVEYOR CIVIL ENGINEER
 NO. REGISTRATION NO. 370 NO. REGISTRATION NO. 15138



CURVE DATA

CHORD BEARINGS	CHORD DIST.	ANGLE	LENGTH	TANGENT	CHORD BEARINGS	CHORD DIST.
1 2°40'00"	7879.44	352.76	176.41	S 16°33'47"E	382.73	
2 2°52'02"	8769.58	392.18	196.16	S 17°10'13"E	392.10	
3 2°53'01"	8798.58	397.17	193.80	S 20°28'10"E	207.16	
4 2°50'17"	399.80	143.30	72.61	S 54°51'37"W	142.36	
5 12°43'53"	777.01	172.66	86.88	S 49°46'23"W	172.30	
6 6°08'51"	778.51	69.94	34.99	S 86°44'48"W	69.92	



NOTE: TO HAVE DENIED ACCESS ALONG ROCKVILLE PIKE AND ROUTE NO. 355 EXCEPT FOR 50 FEET TO COVER THE EXISTING ENTRANCE FROM ROCKVILLE PIKE

PARCEL 1
 3,933,657 SQ. FT.
 OR
 90.30434 ACRES

LINE DATA

BEARING	DISTANCE
1 N 89°30'00"W	65.82
2 N 41°50'03"E	66.54
3 N 09°08'09"E	40.78
4 N 29°30'53"E	36.27
5 N 69°53'08"E	68.31
6 N 41°51'32"E	49.57
7 N 17°07'26"E	39.79
8 N 04°42'33"E	209.45
9 N 00°36'01"W	337.04
10 N 02°14'23"W	336.43
11 N 21°36'03"W	89.31
12 N 76°36'00"E	57.28
13 S 18°48'32"E	38.62
14 S 04°04'11"E	177.22
15 S 00°50'48"W	188.08
16 S 00°58'04"W	338.92
17 S 00°12'32"W	309.78
18 S 13°57'30"W	102.19

ADDENDUM TO OWNERS DEDICATION
 FURTHER, WE GRANT TO POTOMAC EDISON POWER COMPANY, CHESAPEAKE AND POTOMAC TELEPHONE COMPANY, OF MARYLAND AND WASHINGTON GAS LIGHT COMPANY, AND TO EACH OF THEM AND TO THEIR RESPECTIVE SUCCESSORS AND ASSIGNS, FOREVER, AN EASEMENT IN, ON AND OVER THE LAND IDENTIFIED AS "10-FOOT WIDE PUBLIC UTILITY EASEMENT", AND DESIGNATED AS "P.U.E. HEREON WITHIN THE TERMS AND PROVISIONS OF SAID GRANT BEING THOSE SET FORTH IN THAT CERTAIN DOCUMENTS ENTITLED "DECLARATION OF TERMS AND PROVISIONS OF PUBLIC UTILITY EASEMENTS" AS RECORDED IN LIBER 3534 AT FOLIO 467 AMONG THE LAND RECORDS OF MONTGOMERY COUNTY, MARYLAND.

NOTE:
 1. THE FLOOD PLAIN EASEMENT SHOWN HEREON WAS DETERMINED BY A FLOOD STUDY BY PHRA DATED OCTOBER 29, 1982 AND APPROVED BY D.E.P. DECEMBER 9, 1982.
 2. THE CONSERVATION EASEMENT SHOWN HEREON IS RECORDED IN LIBER 4498 AT FOLIO 877 AMONG THE LAND RECORDS OF MONTGOMERY COUNTY, MARYLAND.
 3. DEVELOPMENT SUBJECT TO THE REQUIREMENTS OF THE FOREST CONSERVATION LAW OF 1982 AND AN AGREEMENT WITH THE MONTGOMERY COUNTY PLANNING BOARD REGARDING ADEQUATE PUBLIC FACILITIES.



TUCKERMAN STATION
 ALL TERMS, CONDITIONS, AGREEMENTS, LIMITATIONS, AND REQUIREMENTS ASSOCIATED WITH ANY PRELIMINARY PLAN, SITE PLAN, PROJECT PLAN OR OTHER PLAN, ALONG WITH DEVELOPMENT OF THIS PROPERTY, APPROVED BY THE MONTGOMERY COUNTY PLANNING BOARD ARE INTENDED TO SURVIVE AND NOT BE EXTINGUISHED BY THE RECORDATION OF THIS PLAT, UNLESS EXPRESSLY CONTINGENT UPON THE PLAN AS APPROVED. THE OFFICIAL PUBLIC UTILITIES FOR ANY SUCH PLAN ARE MAINTAINED BY THE PLANNING BOARD AND AVAILABLE FOR PUBLIC REVIEW DURING NORMAL BUSINESS HOURS.
 202-221-2372 / 202-941-0002 / 709-5402

MARYLAND NATIONAL CAPITAL PARK AND PLANNING COMMISSION MONTGOMERY COUNTY PLANNING BOARD
 APPROVED: *February 11, 1993*
 CHAIRMAN: *Raymond E. Travers* ASSESSOR: *Raymond E. Travers*
 H.N.C.P. & P.C. RECORD FILE NO. 532-23

MONTGOMERY COUNTY MARYLAND DEPARTMENT OF TRANSPORTATION
 APPROVED: *MAY 28, 1993*
 PVE DIRECTOR: *John J. Morgan*

MONTGOMERY COUNTY, MARYLAND DEPARTMENT OF ENVIRONMENTAL PROTECTION
 APPROVED: *JUNE 8, 1993*
 PVE DIRECTOR: *John J. Morgan*

RECORDED: 7-13-93
 PLAT BOOK: 170
 PLAT NO.: 19090

PHRA
 Potomac Hydrograph & Associates, Inc.
 7000 Woodloch Place
 Bethesda, Maryland 20814
 301-768-6600 / 301-768-7044
 Facsimile: 301-768-6646

SUBDIVISION RECORD PLAT
PARCEL 1
GEORGETOWN PREPARATORY SCHOOL, INC.
 FOURTH ELECTION DISTRICT
 MONTGOMERY COUNTY, MARYLAND
 SCALE: 1"=200'
 JANUARY 1993