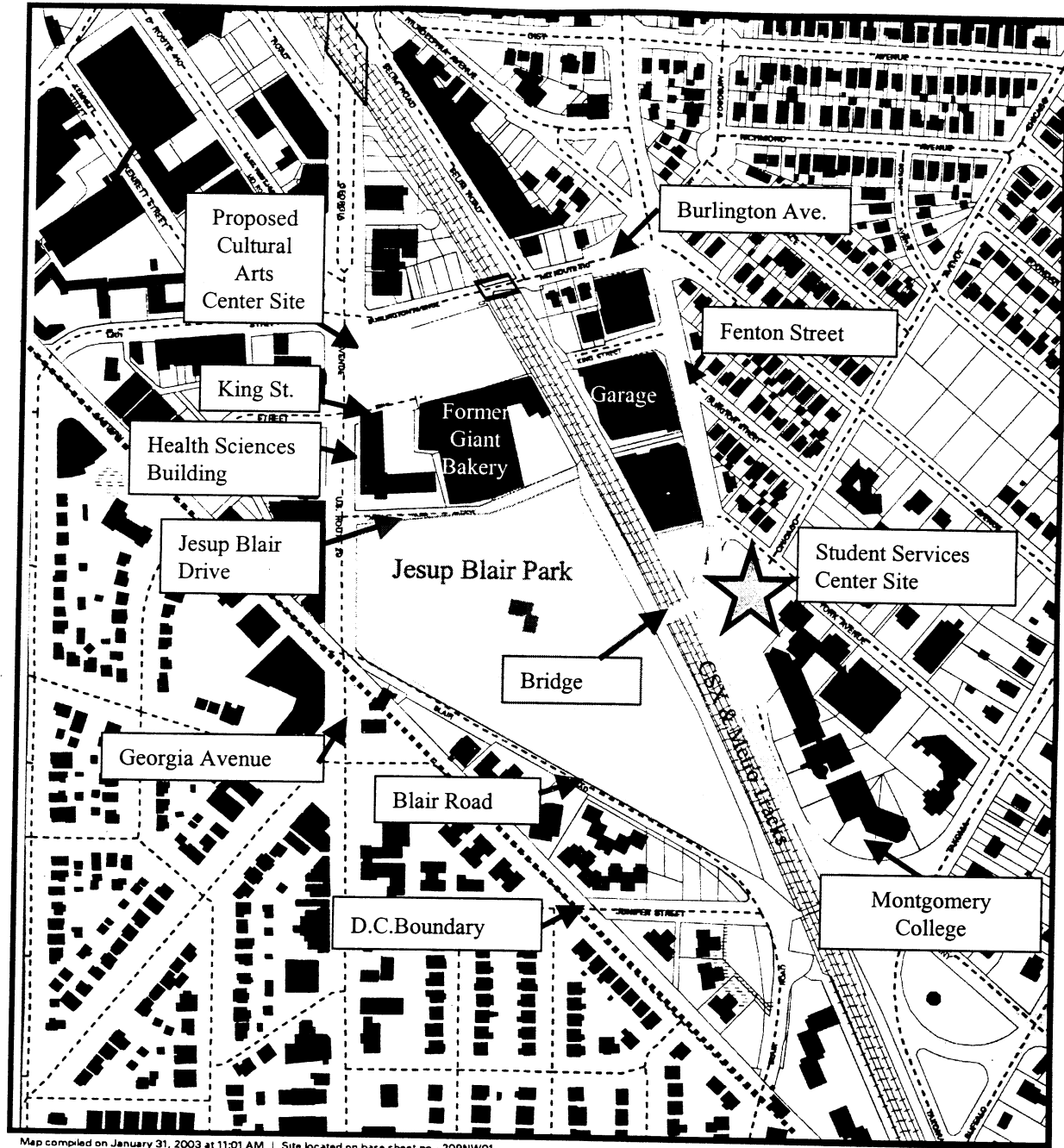
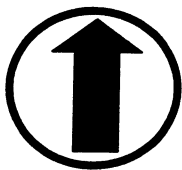


Location Map



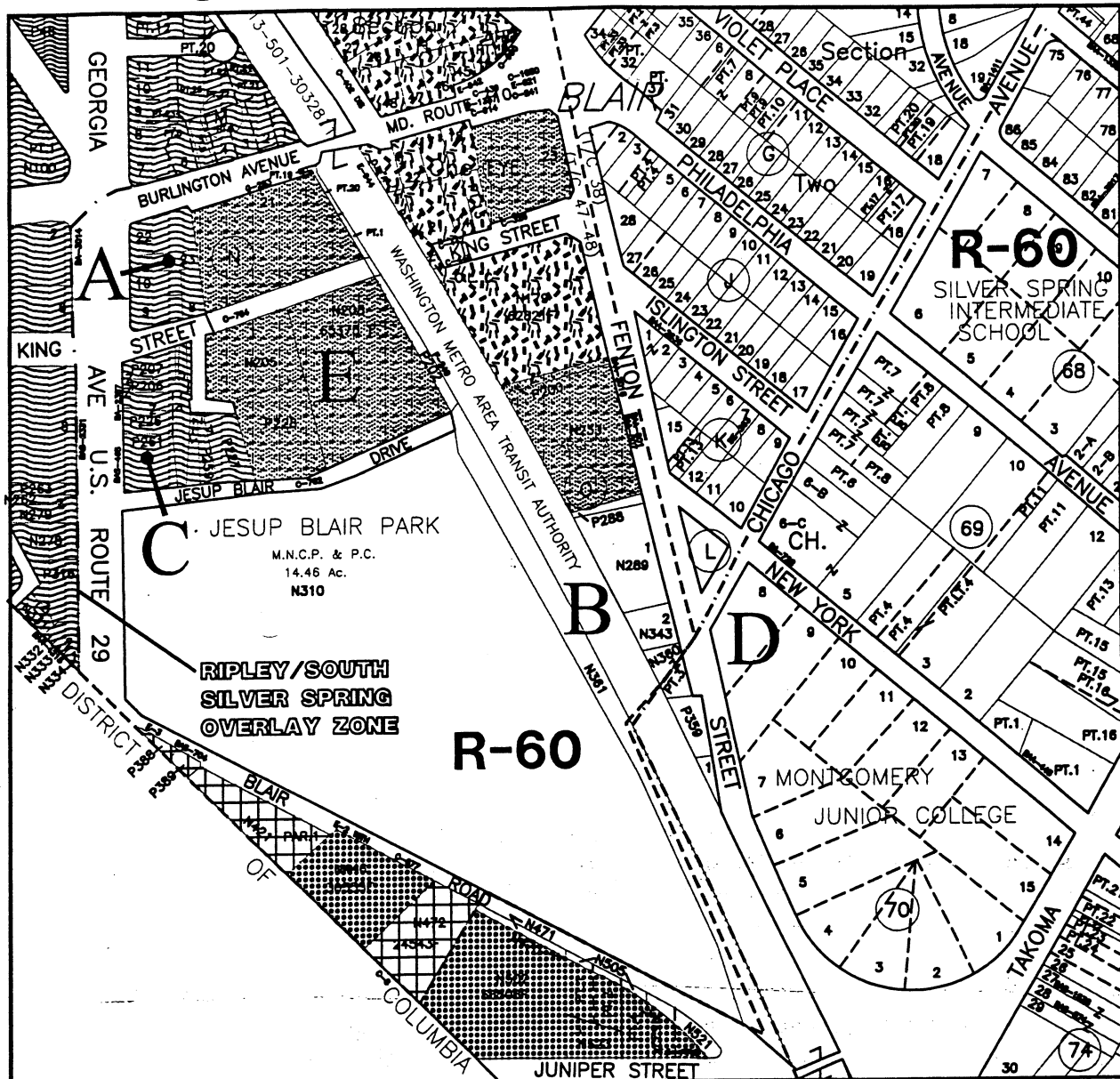
Map compiled on January 31, 2003 at 11:01 AM | Site located on base sheet no - 209NW01



North
not to scale

M-NCPPC June 30, 2003
Montgomery College Expansion Staff Report

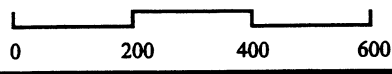
Existing Zoning



R10
C2
CBD1
CBD2
I1
I4

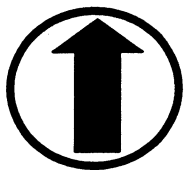
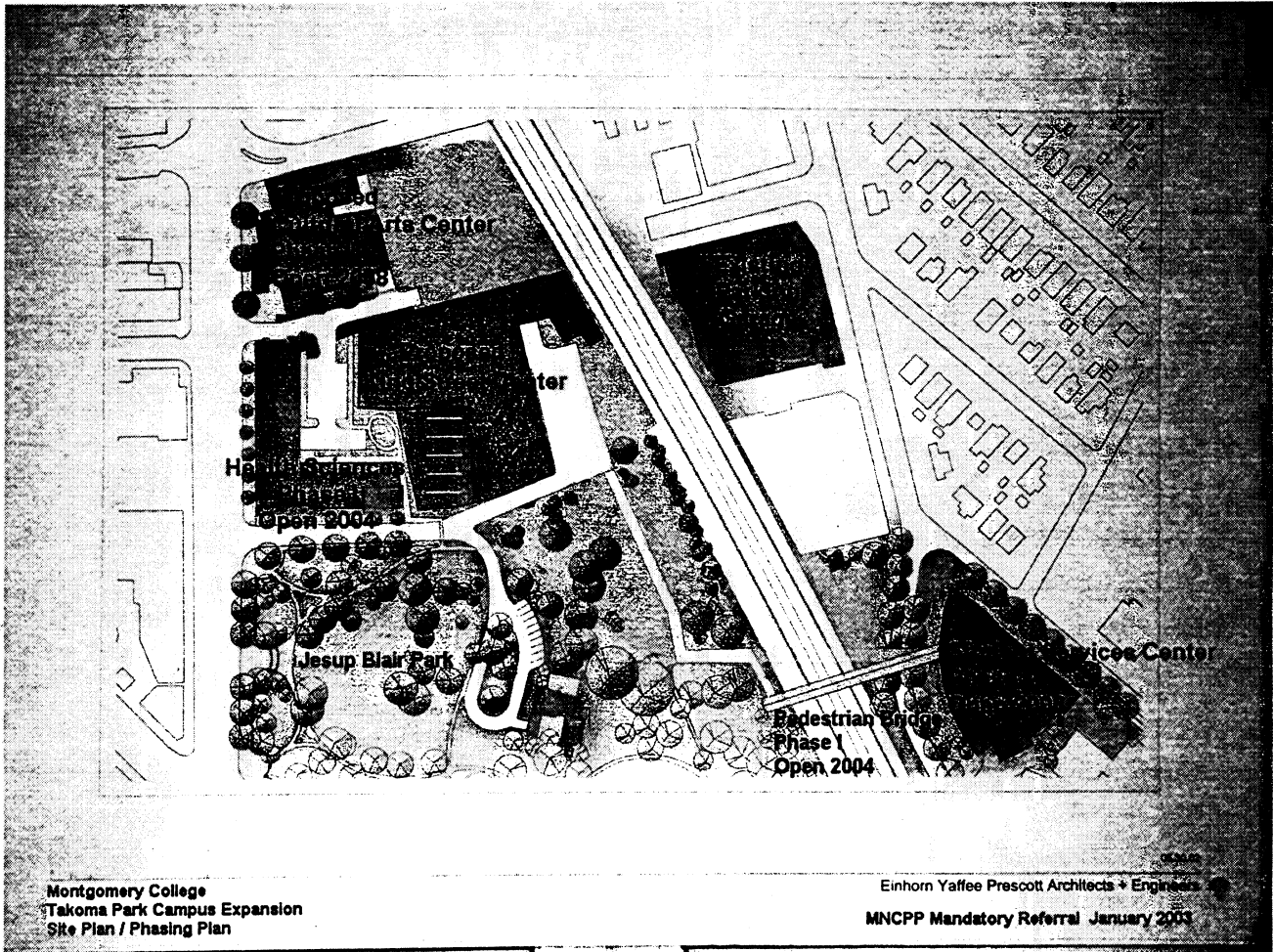
TAKOMA PARK BOUNDARY
RIPLEY/SOUTH SILVER SPRING OVERLAY ZONE
CENTRAL BUSINESS DISTRICT BOUNDARY
A CULTURAL ARTS CENTER
B BRIDGE
C HEALTH SCIENCES BUILDING

D STUDENT SERVICES CENTER
E FORMER GIANT BAKERY SITE



mgmap4/mplans/silverpr/cbd-final/jap-zoning2.dwg

Site Plan for Entire Expansion Area



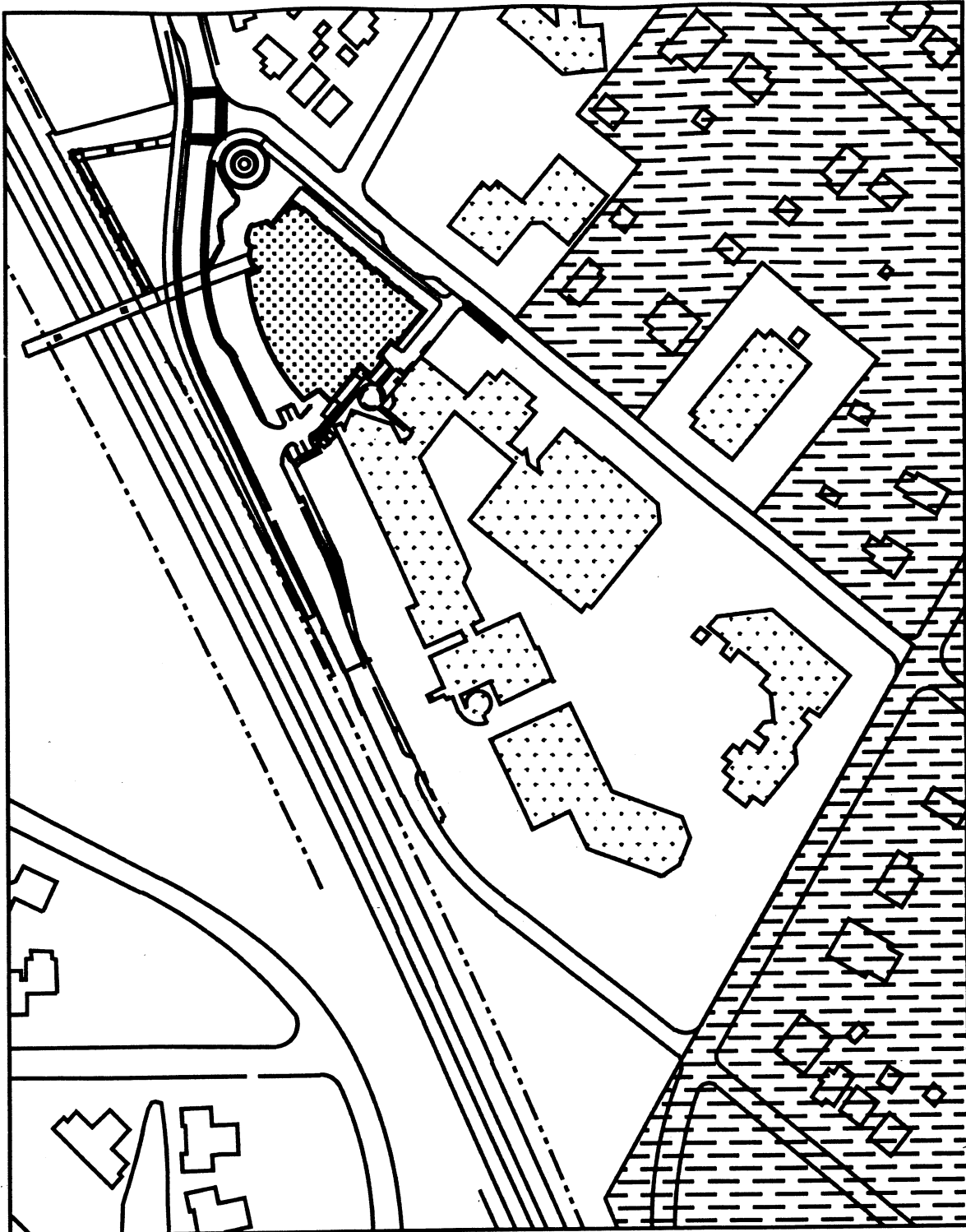
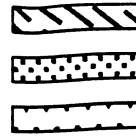
North
not to scale

M-NCPPC June 30, 2003

Montgomery College Expansion Staff Report

Historic District Analysis

TAKOMA PARK HISTORIC DISTRICT
PROPOSED STUDENT SERVICES CENTER
EXISTING COLLEGE BUILDINGS



HISTORIC DISTRICT ANALYSIS

MONTGOMERY COLLEGE STUDENT SERVICES CENTER

EYP/ 061203

Site Plan/Landscape Plan

| NO. | DESCRIPTION | DATE | BY | CHECKED | APPROVED |
|-----|--------------------|----------|------|---------|----------|
| 1 | PRELIMINARY LAYOUT | 10/10/02 | J.P. | J.P. | J.P. |
| 2 | REVISIONS | 11/15/02 | J.P. | J.P. | J.P. |
| 3 | REVISIONS | 12/10/02 | J.P. | J.P. | J.P. |
| 4 | REVISIONS | 1/15/03 | J.P. | J.P. | J.P. |
| 5 | REVISIONS | 2/10/03 | J.P. | J.P. | J.P. |
| 6 | REVISIONS | 3/10/03 | J.P. | J.P. | J.P. |
| 7 | REVISIONS | 4/10/03 | J.P. | J.P. | J.P. |
| 8 | REVISIONS | 5/10/03 | J.P. | J.P. | J.P. |
| 9 | REVISIONS | 6/10/03 | J.P. | J.P. | J.P. |
| 10 | REVISIONS | 7/10/03 | J.P. | J.P. | J.P. |
| 11 | REVISIONS | 8/10/03 | J.P. | J.P. | J.P. |
| 12 | REVISIONS | 9/10/03 | J.P. | J.P. | J.P. |
| 13 | REVISIONS | 10/10/03 | J.P. | J.P. | J.P. |
| 14 | REVISIONS | 11/10/03 | J.P. | J.P. | J.P. |
| 15 | REVISIONS | 12/10/03 | J.P. | J.P. | J.P. |
| 16 | REVISIONS | 1/10/04 | J.P. | J.P. | J.P. |
| 17 | REVISIONS | 2/10/04 | J.P. | J.P. | J.P. |
| 18 | REVISIONS | 3/10/04 | J.P. | J.P. | J.P. |
| 19 | REVISIONS | 4/10/04 | J.P. | J.P. | J.P. |
| 20 | REVISIONS | 5/10/04 | J.P. | J.P. | J.P. |
| 21 | REVISIONS | 6/10/04 | J.P. | J.P. | J.P. |
| 22 | REVISIONS | 7/10/04 | J.P. | J.P. | J.P. |
| 23 | REVISIONS | 8/10/04 | J.P. | J.P. | J.P. |
| 24 | REVISIONS | 9/10/04 | J.P. | J.P. | J.P. |
| 25 | REVISIONS | 10/10/04 | J.P. | J.P. | J.P. |
| 26 | REVISIONS | 11/10/04 | J.P. | J.P. | J.P. |
| 27 | REVISIONS | 12/10/04 | J.P. | J.P. | J.P. |
| 28 | REVISIONS | 1/10/05 | J.P. | J.P. | J.P. |
| 29 | REVISIONS | 2/10/05 | J.P. | J.P. | J.P. |
| 30 | REVISIONS | 3/10/05 | J.P. | J.P. | J.P. |
| 31 | REVISIONS | 4/10/05 | J.P. | J.P. | J.P. |
| 32 | REVISIONS | 5/10/05 | J.P. | J.P. | J.P. |
| 33 | REVISIONS | 6/10/05 | J.P. | J.P. | J.P. |
| 34 | REVISIONS | 7/10/05 | J.P. | J.P. | J.P. |
| 35 | REVISIONS | 8/10/05 | J.P. | J.P. | J.P. |
| 36 | REVISIONS | 9/10/05 | J.P. | J.P. | J.P. |
| 37 | REVISIONS | 10/10/05 | J.P. | J.P. | J.P. |
| 38 | REVISIONS | 11/10/05 | J.P. | J.P. | J.P. |
| 39 | REVISIONS | 12/10/05 | J.P. | J.P. | J.P. |
| 40 | REVISIONS | 1/10/06 | J.P. | J.P. | J.P. |
| 41 | REVISIONS | 2/10/06 | J.P. | J.P. | J.P. |
| 42 | REVISIONS | 3/10/06 | J.P. | J.P. | J.P. |
| 43 | REVISIONS | 4/10/06 | J.P. | J.P. | J.P. |
| 44 | REVISIONS | 5/10/06 | J.P. | J.P. | J.P. |
| 45 | REVISIONS | 6/10/06 | J.P. | J.P. | J.P. |
| 46 | REVISIONS | 7/10/06 | J.P. | J.P. | J.P. |
| 47 | REVISIONS | 8/10/06 | J.P. | J.P. | J.P. |
| 48 | REVISIONS | 9/10/06 | J.P. | J.P. | J.P. |
| 49 | REVISIONS | 10/10/06 | J.P. | J.P. | J.P. |
| 50 | REVISIONS | 11/10/06 | J.P. | J.P. | J.P. |
| 51 | REVISIONS | 12/10/06 | J.P. | J.P. | J.P. |
| 52 | REVISIONS | 1/10/07 | J.P. | J.P. | J.P. |
| 53 | REVISIONS | 2/10/07 | J.P. | J.P. | J.P. |
| 54 | REVISIONS | 3/10/07 | J.P. | J.P. | J.P. |
| 55 | REVISIONS | 4/10/07 | J.P. | J.P. | J.P. |
| 56 | REVISIONS | 5/10/07 | J.P. | J.P. | J.P. |
| 57 | REVISIONS | 6/10/07 | J.P. | J.P. | J.P. |
| 58 | REVISIONS | 7/10/07 | J.P. | J.P. | J.P. |
| 59 | REVISIONS | 8/10/07 | J.P. | J.P. | J.P. |
| 60 | REVISIONS | 9/10/07 | J.P. | J.P. | J.P. |
| 61 | REVISIONS | 10/10/07 | J.P. | J.P. | J.P. |
| 62 | REVISIONS | 11/10/07 | J.P. | J.P. | J.P. |
| 63 | REVISIONS | 12/10/07 | J.P. | J.P. | J.P. |
| 64 | REVISIONS | 1/10/08 | J.P. | J.P. | J.P. |
| 65 | REVISIONS | 2/10/08 | J.P. | J.P. | J.P. |
| 66 | REVISIONS | 3/10/08 | J.P. | J.P. | J.P. |
| 67 | REVISIONS | 4/10/08 | J.P. | J.P. | J.P. |
| 68 | REVISIONS | 5/10/08 | J.P. | J.P. | J.P. |
| 69 | REVISIONS | 6/10/08 | J.P. | J.P. | J.P. |
| 70 | REVISIONS | 7/10/08 | J.P. | J.P. | J.P. |
| 71 | REVISIONS | 8/10/08 | J.P. | J.P. | J.P. |
| 72 | REVISIONS | 9/10/08 | J.P. | J.P. | J.P. |
| 73 | REVISIONS | 10/10/08 | J.P. | J.P. | J.P. |
| 74 | REVISIONS | 11/10/08 | J.P. | J.P. | J.P. |
| 75 | REVISIONS | 12/10/08 | J.P. | J.P. | J.P. |
| 76 | REVISIONS | 1/10/09 | J.P. | J.P. | J.P. |
| 77 | REVISIONS | 2/10/09 | J.P. | J.P. | J.P. |
| 78 | REVISIONS | 3/10/09 | J.P. | J.P. | J.P. |
| 79 | REVISIONS | 4/10/09 | J.P. | J.P. | J.P. |
| 80 | REVISIONS | 5/10/09 | J.P. | J.P. | J.P. |
| 81 | REVISIONS | 6/10/09 | J.P. | J.P. | J.P. |
| 82 | REVISIONS | 7/10/09 | J.P. | J.P. | J.P. |
| 83 | REVISIONS | 8/10/09 | J.P. | J.P. | J.P. |
| 84 | REVISIONS | 9/10/09 | J.P. | J.P. | J.P. |
| 85 | REVISIONS | 10/10/09 | J.P. | J.P. | J.P. |
| 86 | REVISIONS | 11/10/09 | J.P. | J.P. | J.P. |
| 87 | REVISIONS | 12/10/09 | J.P. | J.P. | J.P. |
| 88 | REVISIONS | 1/10/10 | J.P. | J.P. | J.P. |
| 89 | REVISIONS | 2/10/10 | J.P. | J.P. | J.P. |
| 90 | REVISIONS | 3/10/10 | J.P. | J.P. | J.P. |
| 91 | REVISIONS | 4/10/10 | J.P. | J.P. | J.P. |
| 92 | REVISIONS | 5/10/10 | J.P. | J.P. | J.P. |
| 93 | REVISIONS | 6/10/10 | J.P. | J.P. | J.P. |
| 94 | REVISIONS | 7/10/10 | J.P. | J.P. | J.P. |
| 95 | REVISIONS | 8/10/10 | J.P. | J.P. | J.P. |
| 96 | REVISIONS | 9/10/10 | J.P. | J.P. | J.P. |
| 97 | REVISIONS | 10/10/10 | J.P. | J.P. | J.P. |
| 98 | REVISIONS | 11/10/10 | J.P. | J.P. | J.P. |
| 99 | REVISIONS | 12/10/10 | J.P. | J.P. | J.P. |
| 100 | REVISIONS | 1/10/11 | J.P. | J.P. | J.P. |

Avoid tempting pedestrians to cross mid-block – change this area from an inviting arrival/gathering space to a smaller passage space for transit users. Expand the landscaped green area to do this as shown.

Coordinate with DPWT to shift bus stops closer to crosswalk & north entrance. Avoid transit users crossing Fenton mid-block or maintenance drive to southern entrance.

Maintenance drive

Metropolitan Branch Trail

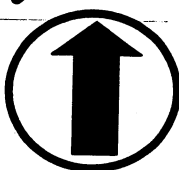
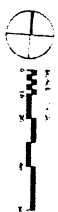
Fenton Street

Unify planting design at gateway

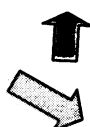
Chicago Avenue

Coordinate New York Avenue streetscape

New York Avenue



North not to scale



Entrance street level



Existing Bus Stop Locations

Entrance second level

M-NCPPC June 30, 2003

Montgomery College Expansion Staff Report

STUDENT SERVICES CENTER
MONTGOMERY COLLEGE
SILVER SPRING, MARYLAND

Landscape Plan
MONTGOMERY COLLEGE
Towers Park, Campus Expansion
13th Election District

DEPARTMENT OF GENERAL SERVICES
APPROVAL:
PROJECT MANAGER DATE

MONTGOMERY COLLEGE
APPROVAL:

Engham
York
Prescott

GREENHORNE & O'MARA
EDAW
CAGLEY & ASSOCIATES
Civil Engineering
Landscape Architecture
Structural Engineering

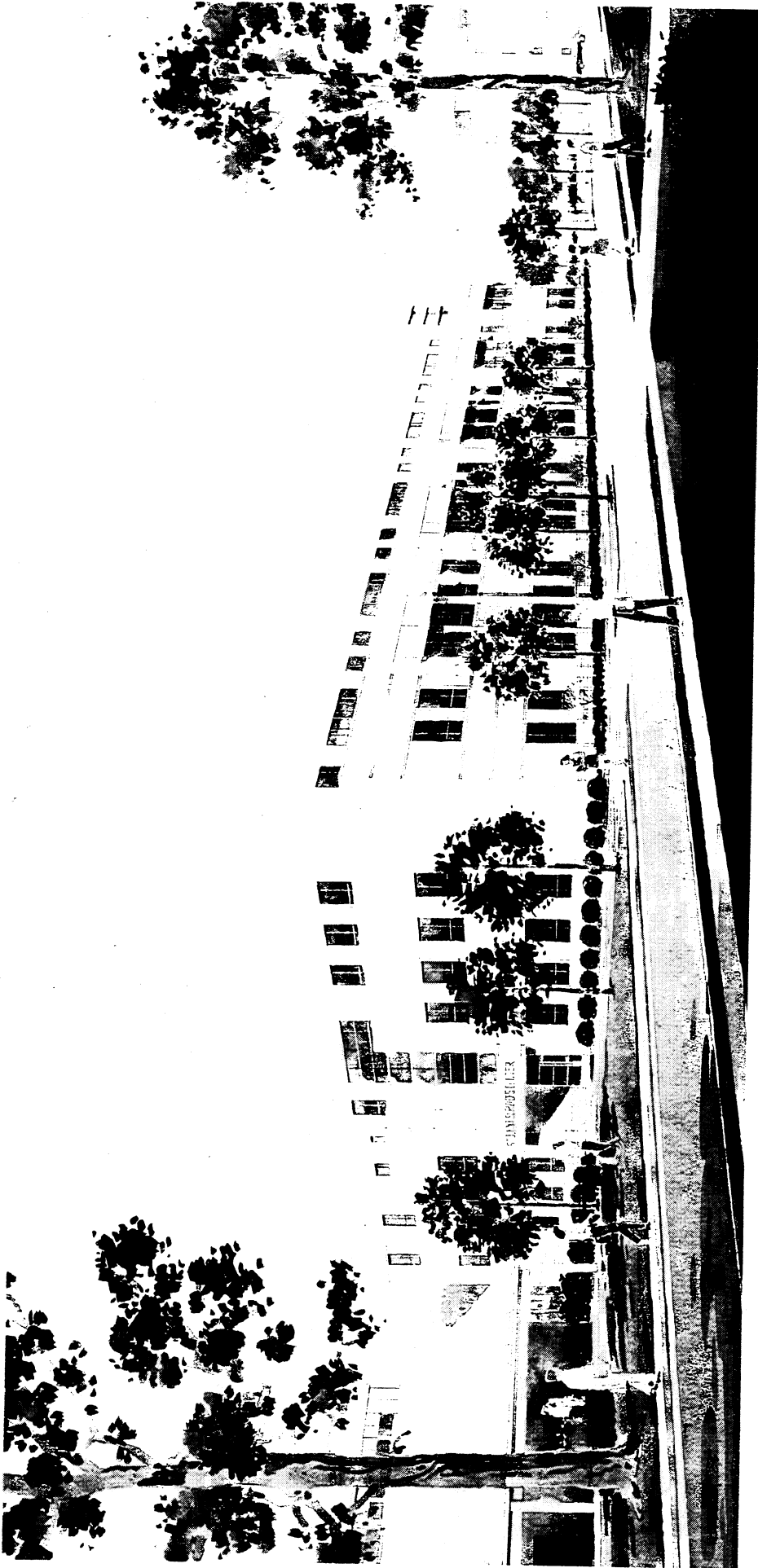


Aerial Perspective Looking South

MONTGOMERY COLLEGE **STUDENT SERVICES CENTER**

Einhorn Yaffee Prescott Architects + Engineers

05.19.03



Perspective - New York Avenue