

Item #8



THE MARYLAND-NATIONAL CAPITAL PARK AND PLANNING COMMISSION

M E M O R A N D U M

DATE: July 7, 2003
TO: Montgomery County Planning Board
FROM: A. Malcolm Shaneman
Development Review Division
(301) 495-4587
SUBJECT: Informational Maps for Subdivision Items on the
Planning Board's Agenda for July 10, 2003.

-

Attached are copies of plan drawings for Item #06, #07, #08 and #09. These subdivision items are scheduled for Planning Board consideration on July 10, 2003. The items are further identified as follows:

Agenda Item #06 - Preliminary Plan 1-03067
Mary Boland Subdivision

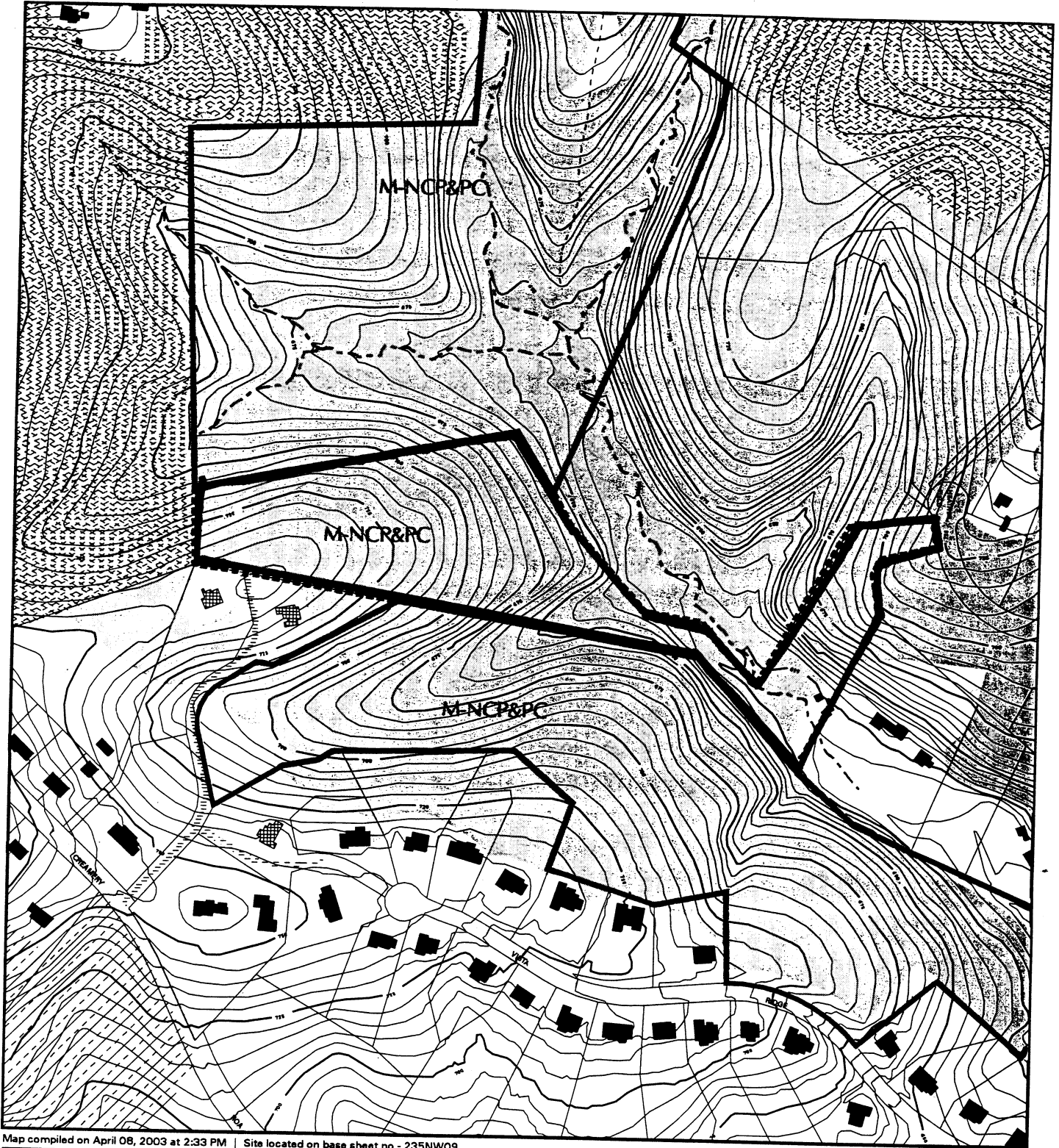
Agenda Item #07 - Preliminary Plan 1-03081
Bannockburn

Agenda Item #08 - Preliminary Plan 1-03069
Seneca Springs

Agenda Item #09 - Preliminary Plan 1-03079
Watkins Property

Attachment

VICINITY MAP FOR
SENECA SPRINGS (1-03069)



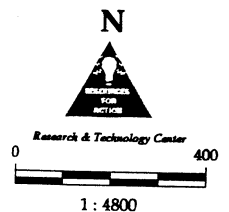
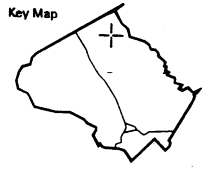
Map compiled on April 08, 2003 at 2:33 PM | Site located on base sheet no - 235NW09

NOTICE

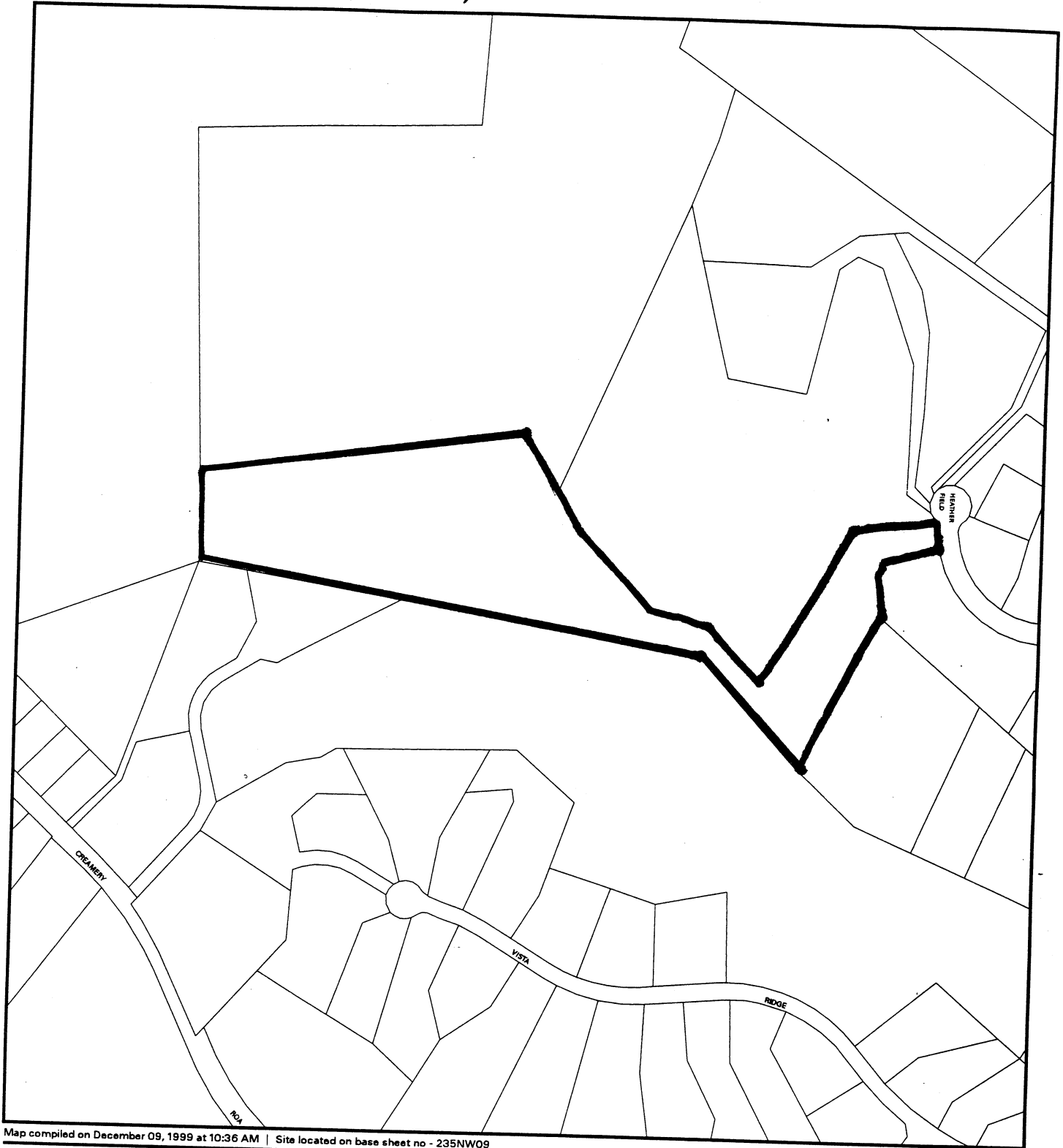
The planimetric, property, and topographic information shown on this map is based on copyrighted Map Products from the Montgomery County Department of Park and Planning of the Maryland-National Capital Park and Planning Commission, and may not be copied or reproduced without written permission from M-NCPPC.

Property lines are compiled by adjusting the property lines to topography created from aerial photography and should not be interpreted as actual field surveys. Planimetric features were compiled from 1:14400 scale aerial photography using stereo photogrammetric methods.

This map is created from a variety of data sources, and may not reflect the most current conditions in any one location and may not be completely accurate or up to date. All map features are approximately within five feet of their true location. This map may not be the same as a map of the same area plotted at an earlier time as the data is continuously updated. Use of this map, other than for general planning purposes is not recommended. - Copyright 1998



VICINITY MAP FOR
SENECA SPRINGS (1-03069)



Map compiled on December 09, 1999 at 10:36 AM | Site located on base sheet no - 235NW09

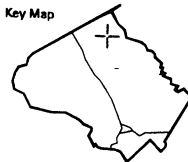
NOTICE

The planimetric, property, and topographic information shown on this map is based on copyrighted Map Products from the Montgomery County Department of Park and Planning of the Maryland -National Capital Park and Planning Commission, and may not be copied or reproduced without written permission from M-NCPPC.

Property lines are compiled by adjusting the property lines to topography created from aerial photography and should not be interpreted as actual field surveys. Planimetric features were compiled from 1:14400 scale aerial photography using stereo photogrammetric methods.

This map is created from a variety of data sources, and may not reflect the most current conditions in any one location and may not be completely accurate or up to date. All map features are approximately within five feet of their true location. This map may not be the same as a map of the same area plotted at an earlier time as the data is continuously updated. Use of this map, other than for general planning purposes is not recommended. - Copyright 1998

Key Map



N



1 : 4800

