

Item #9



THE MARYLAND-NATIONAL CAPITAL PARK AND PLANNING COMMISSION

MEMORANDUM

**DATE:** July 7, 2003  
**TO:** Montgomery County Planning Board  
**FROM:** A. Malcolm Shaneman  
Development Review Division  
(301) 495-4587  
**SUBJECT:** Informational Maps for Subdivision Items on the  
Planning Board's Agenda for July 10, 2003.

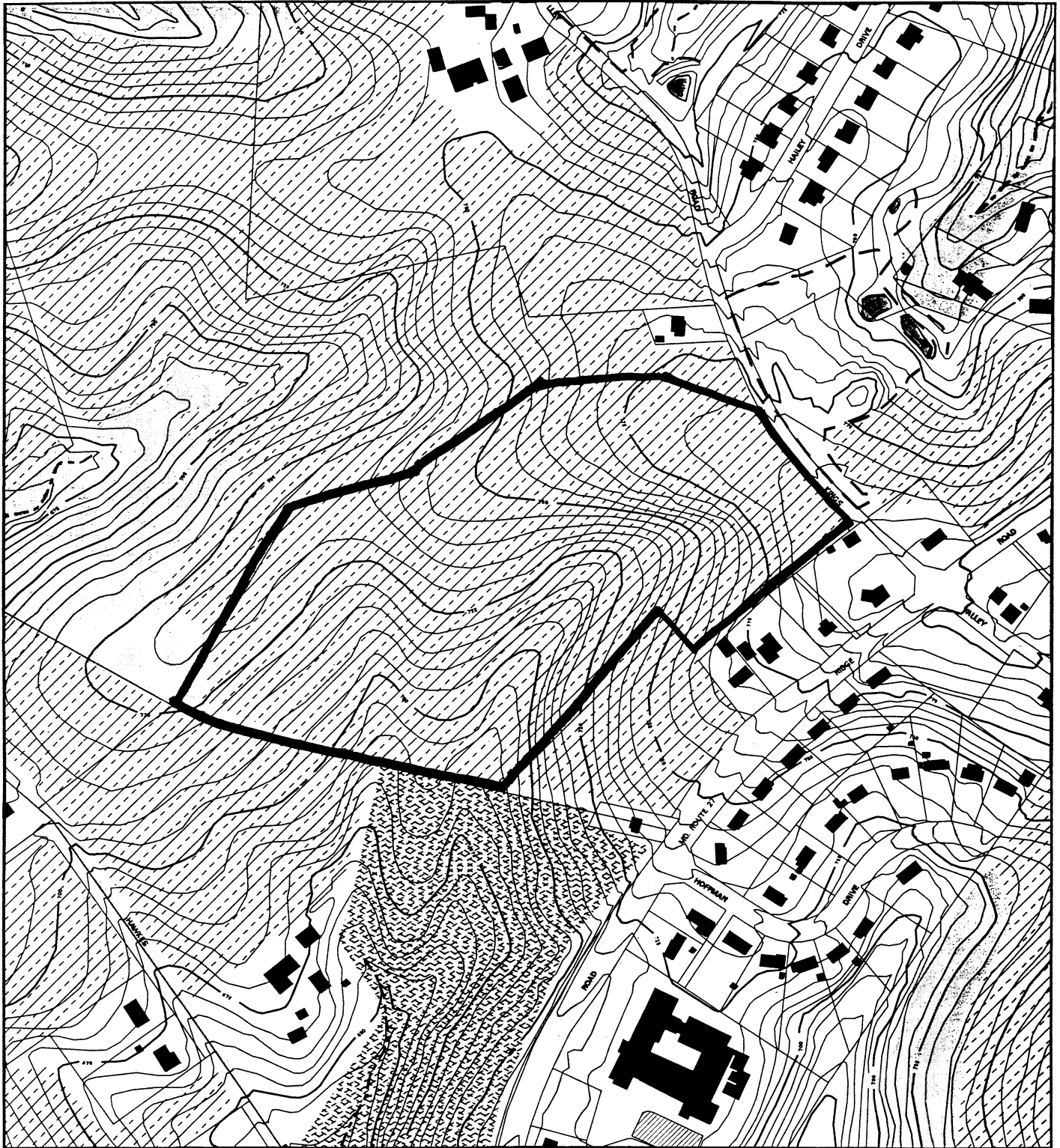
-----

Attached are copies of plan drawings for Item #06, #07, #08 and #09. These subdivision items are scheduled for Planning Board consideration on July 10, 2003. The items are further identified as follows:

- Agenda Item #06 - Preliminary Plan 1-03067  
Mary Boland Subdivision
- Agenda Item #07 - Preliminary Plan 1-03081  
Bannockburn
- Agenda Item #08 - Preliminary Plan 1-03069  
Seneca Springs
- Agenda Item #09 - Preliminary Plan 1-03079  
Watkins Property

Attachment

VICINITY MAP FOR  
**WATKINS PROPERTY (1-03079)**



Map compiled on January 07, 2000 at 9:50 AM | Site located on base sheet no - 234NW11

**NOTICE**

The planimetric, property, and topographic information shown on this map is based on copyrighted Map Products from the Montgomery County Department of Park and Planning of the Maryland-National Capital Park and Planning Commission, and may not be copied or reproduced without written permission from M-NCPPC.

Property lines are compiled by adjusting the property lines to topography created from aerial photography and should not be interpreted as actual field surveys. Planimetric features were compiled from 1:14400 scale aerial photography using stereo photogrammetric methods.

This map is created from a variety of data sources, and may not reflect the most current conditions in any one location and may not be completely accurate or up to date. All map features are approximately within five feet of their true location. This map may not be the same as a map of the same area plotted at an earlier time as the data is continuously updated. Use of this map, other than for general planning purposes is not recommended. - Copyright 1998

Key Map



N

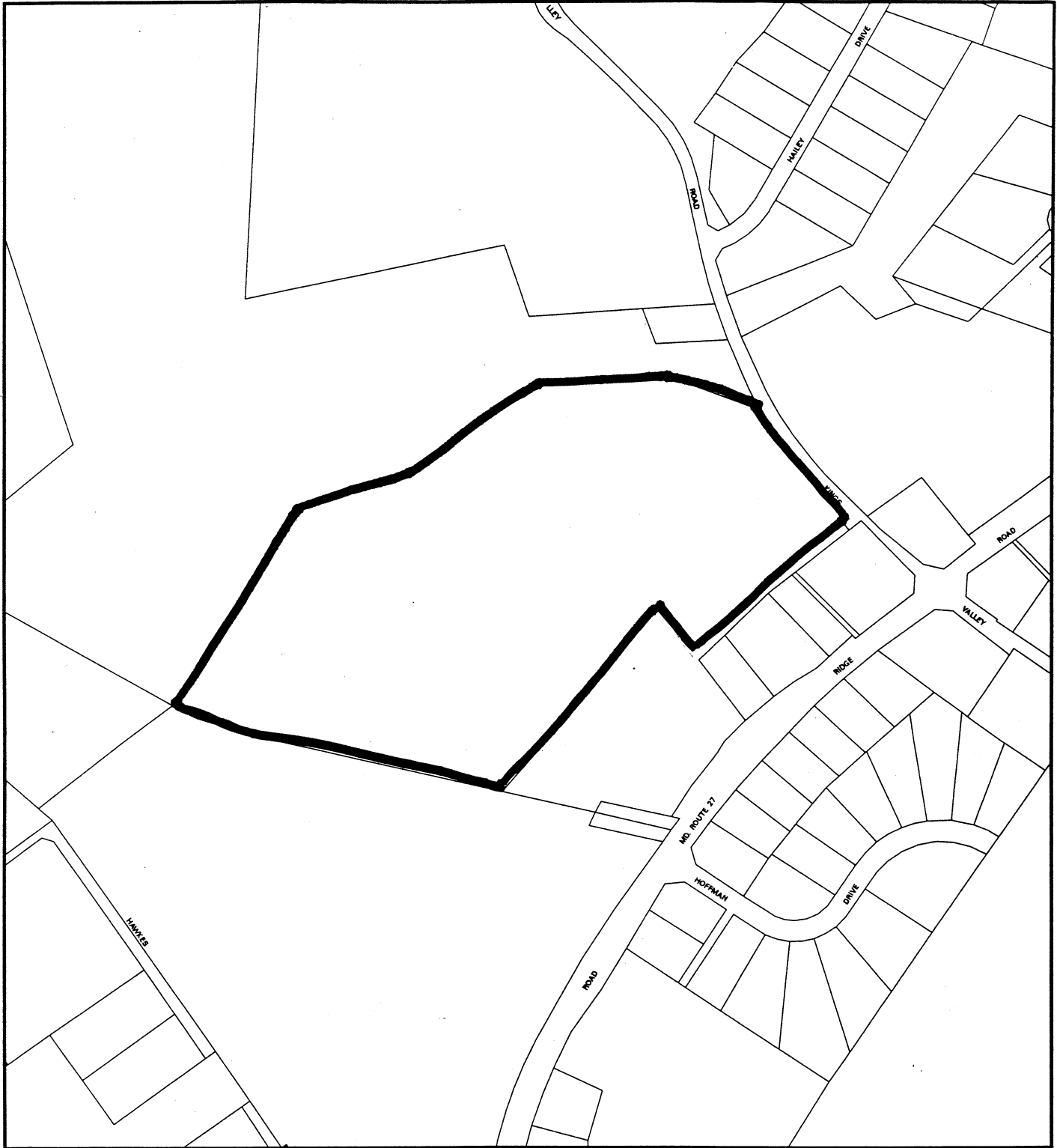


Research & Technology Center



1 : 4800

# WATKINS PROPERTY (1-03079)



Map compiled on January 07, 2000 at 9:26 AM | Site located on base sheet no - 234NW11

### NOTICE

The planimetric, property, and topographic information shown on this map is based on copyrighted Map Products from the Montgomery County Department of Park and Planning of the Maryland - National Capital Park and Planning Commission, and may not be copied or reproduced without written permission from M-NCPPC.

Property lines are compiled by adjusting the property lines to topography created from aerial photography and should not be interpreted as actual field surveys. Planimetric features were compiled from 1:14400 scale aerial photography using stereo photogrammetric methods.

This map is created from a variety of data sources, and may not reflect the most current conditions in any one location and may not be completely accurate or up to date. All map features are approximately within five feet of their true location. This map may not be the same as a map of the same area plotted at an earlier time as the data is continuously updated. Use of this map, other than for general planning purposes is not recommended. - Copyright 1998

