

Item #10



THE MARYLAND-NATIONAL CAPITAL PARK AND PLANNING COMMISSION

M E M O R A N D U M

**DATE:** December 12, 2003  
**TO:** Montgomery County Planning Board  
**FROM:** A. Malcolm Shaneman  
Development Review Division  
(301) 495-4587  
**SUBJECT:** Informational Maps for Subdivision Items on the  
Planning Board's Agenda for December 18, 2003.

---

Attached are copies of plan drawings for Item #07, #08, #10, #12 and #13. These subdivision items are scheduled for Planning Board consideration on December 18, 2003. The items are further identified as follows:

Agenda Item #07 -Preliminary Plan 1-04034  
Ridgewood Village

Agenda Item #08 -Preliminary Plan 1-04020  
Day Property

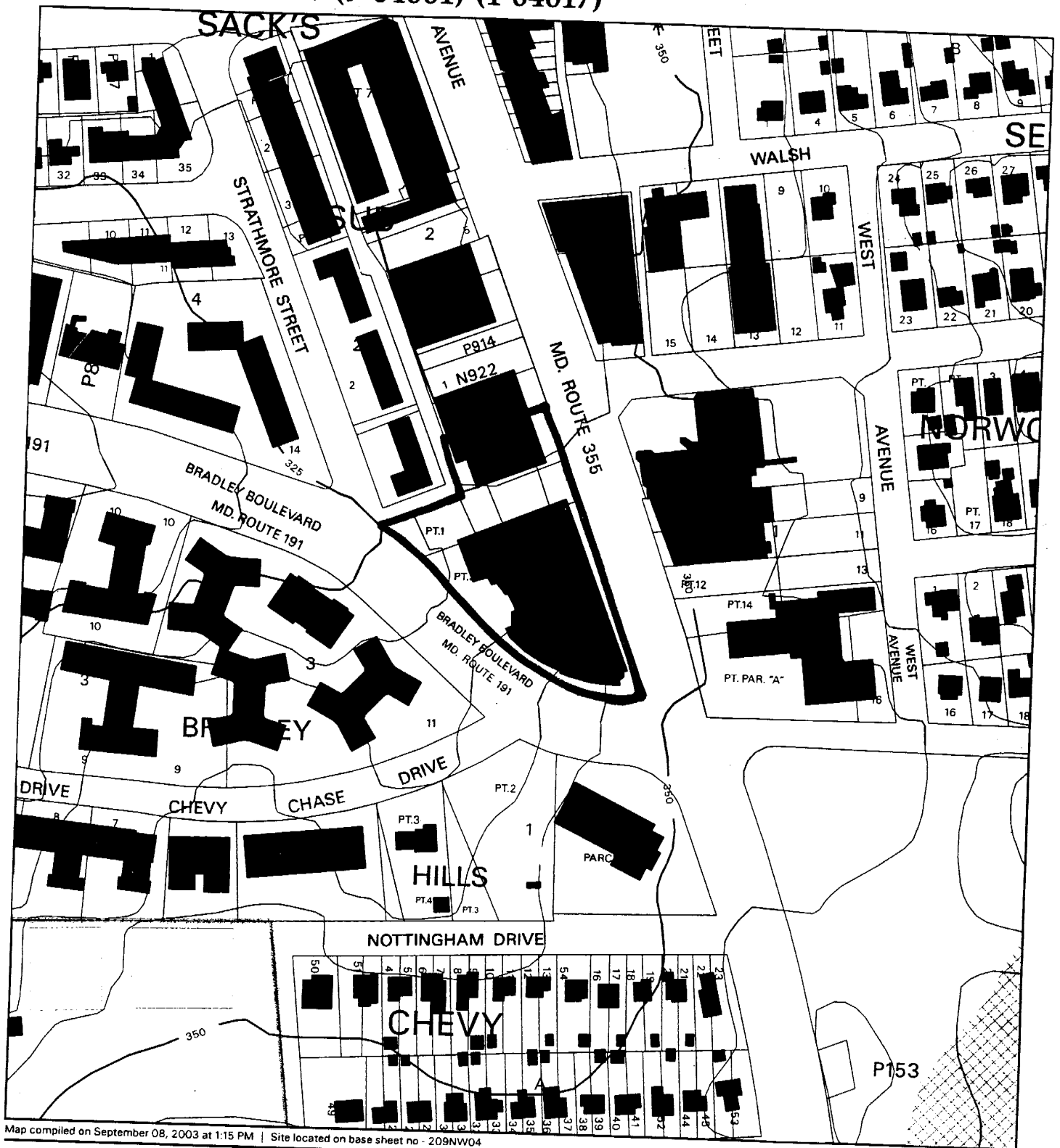
Agenda Item #10 -Preliminary Plan 1-04017  
Bethesda View

Agenda Item #12 -Preliminary Plan 1-03097  
Hill Property

Agenda Item #13 -Preliminary Plan 1-03059  
Baker Property

Attachment

# BETHESDA VIEW (9-04001) (1-04017)



Map compiled on September 08, 2003 at 1:15 PM | Site located on base sheet no - 209NW04

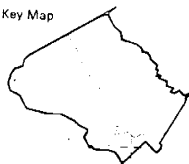
## NOTICE

The planimetric, property, and topographic information shown on this map is based on copyrighted Map Products from the Montgomery County Department of Park and Planning of the Maryland-National Capital Park and Planning Commission, and may not be copied or reproduced without written permission from M-NCPPC.

Property lines are compiled by adjusting the property lines to topography created from aerial photography and should not be interpreted as actual field surveys. Planimetric features were compiled from 1:14400 scale aerial photography using stereo photogrammetric methods.

This map is created from a variety of data sources, and may not reflect the most current conditions in any one location and may not be completely accurate or up to date. All map features are approximately within five feet of their true location. This map may not be the same as a map of the same area plotted at an earlier time as the data is continuously updated. Use of this map, other than for general planning purposes is not recommended. - Copyright 1998

Key Map

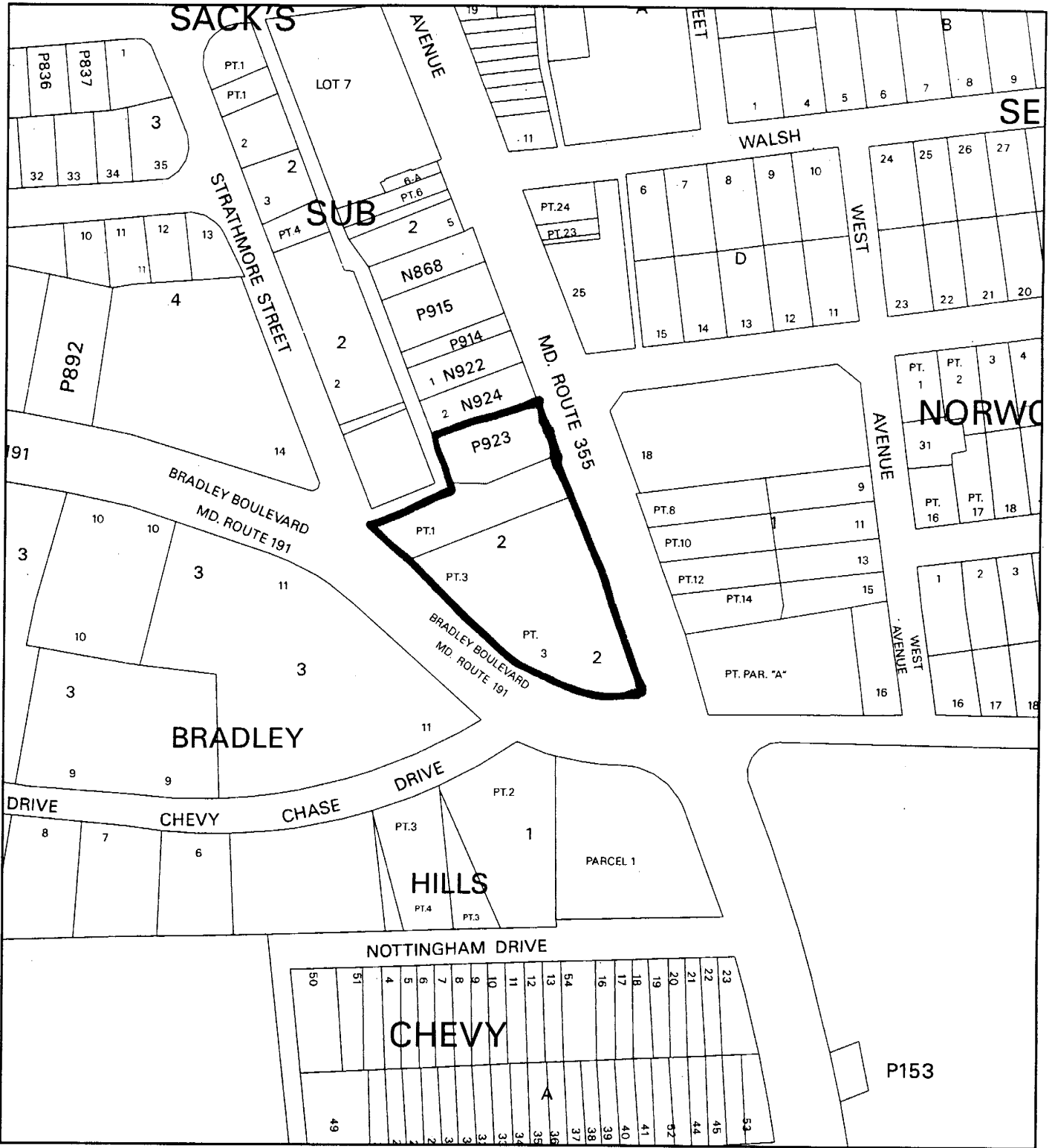


Research & Technology Center



1 : 2400

# BETHESDA VIEW (9-04001) (1-04017)



Map compiled on September 08, 2003 at 1:25 PM | Site located on base sheet no - 209NW04

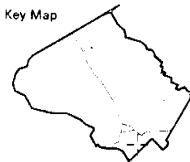
## NOTICE

The planimetric, property, and topographic information shown on this map is based on copyrighted Map Products from the Montgomery County Department of Park and Planning of the Maryland-National Capital Park and Planning Commission, and may not be copied or reproduced without written permission from M-NCPPC.

Property lines are compiled by adjusting the property lines to topography created from aerial photography and should not be interpreted as actual field surveys. Planimetric features were compiled from 1:14400 scale aerial photography using stereo photogrammetric methods.

This map is created from a variety of data sources, and may not reflect the most current conditions in any one location and may not be completely accurate or up to date. All map features are approximately within five feet of their true location. This map may not be the same as a map of the same area plotted at an earlier time as the data is continuously updated. Use of this map, other than for general planning purposes is not recommended. - Copyright 1998

Key Map

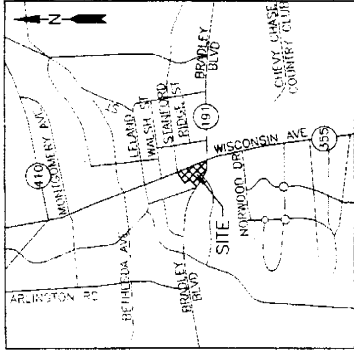


Research & Technology Center

0 200



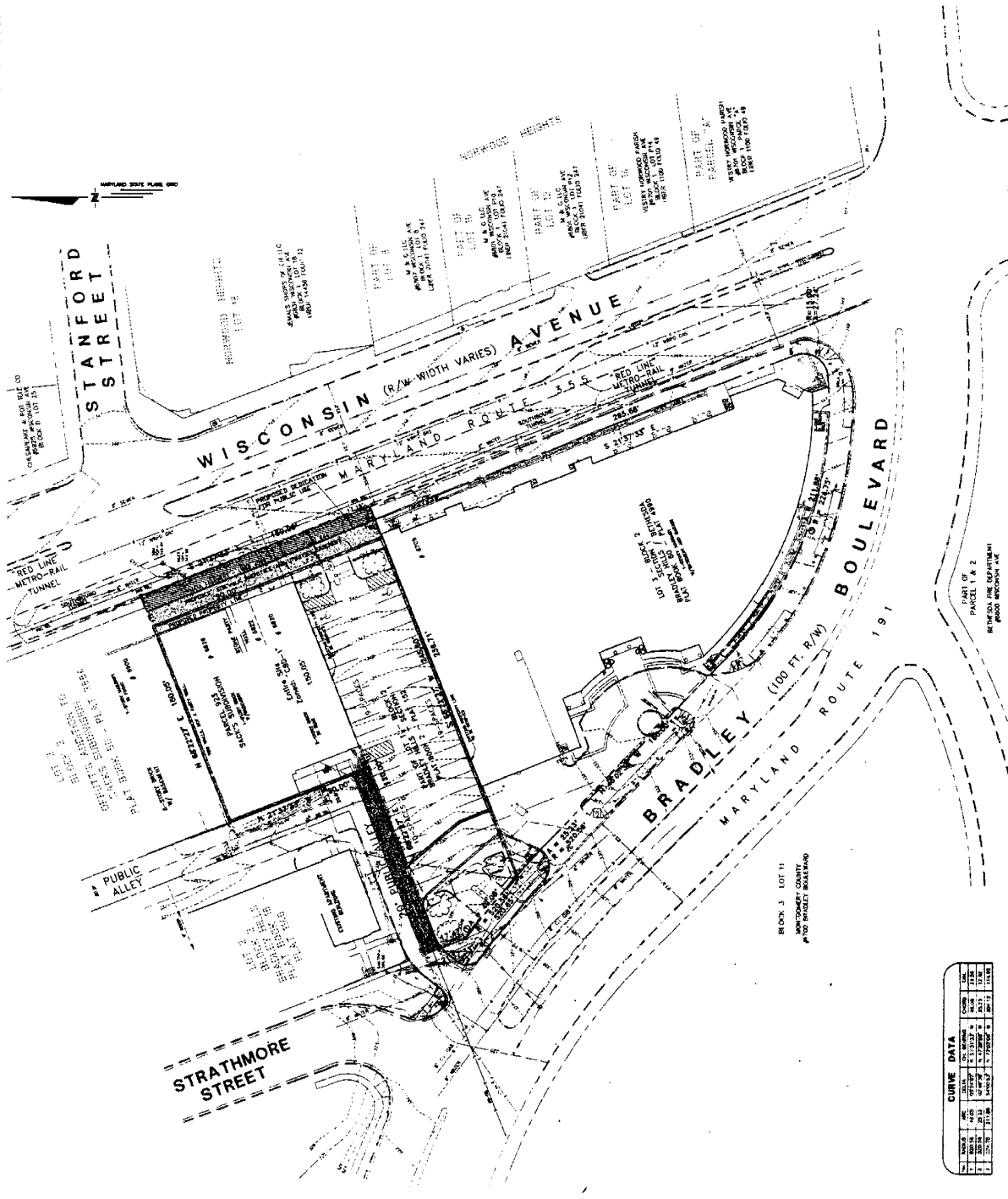
1 : 2400



VICINITY MAP  
1" = 1,000'

LEGEND

- MATA EASEMENT
- FRANCHISE AGREEMENT FOR WATER SPACE
- PROPOSED BUILDING LINE



SITE SURVEY PLAN  
 RE THECIDA, IN W  
 LIBER 22832 - 1443, 453  
 #1820 - BRADLEY WISCONSIN AVENUE  
 MONTICOUNTRY DR. INT., 9674, AND  
 PARCELS 51 & 523

DATE: 08/29/61  
 BY: H.H. 12  
 CHECKED BY: H.H. 12  
 DRAWN BY: H.H. 12

7th ELECTION DISTRICT  
 1 CF

CURVE DATA

NO.	ARC	ANGLE	CHORD	AREA
1	100.00	90.00	141.42	7853.98
2	100.00	90.00	141.42	7853.98

NO.	DATE	DESCRIPTION	BY	DATE

**AMT**  
 CONSULTING ENGINEERS AND ARCHITECTS, INC.  
 1700 BROADWAY, NEW YORK, N.Y. 10014  
 1940 BROADWAY, NEW YORK, N.Y. 10014