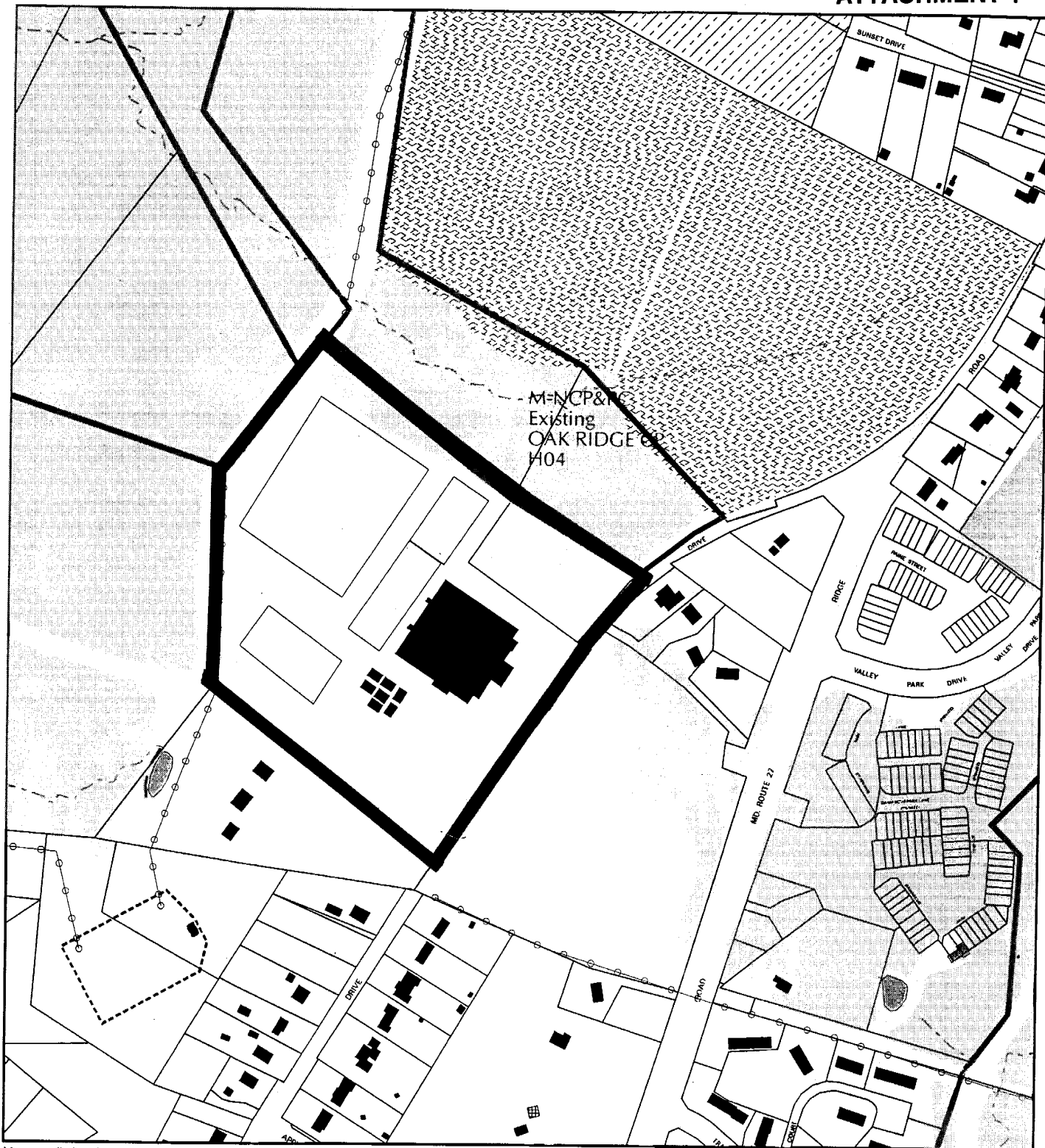


JOHN T. BAKER MIDDLE SCHOOL

ATTACHMENT 1



Map compiled on October 27, 2003 at 1:34 PM | Site located on base sheet no - 236NW10

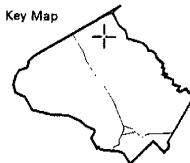
NOTICE

The planimetric, property, and topographic information shown on this map is based on copyrighted Map Products from the Montgomery County Department of Park and Planning of the Maryland - National Capital Park and Planning Commission, and may not be copied or reproduced without written permission from M-NCPPC.

Property lines are compiled by adjusting the property lines to topography created from aerial photography and should not be interpreted as actual field surveys. Planimetric features were compiled from 1:14400 scale aerial photography using stereo photogrammetric methods.

This map is created from a variety of data sources, and may not reflect the most current conditions in any one location and may not be completely accurate or up to date. All map features are approximately within five feet of their true location. This map may not be the same as a map of the same area plotted at an earlier time as the data is continuously updated. Use of this map, other than for general planning purposes is not recommended. - Copyright 1998

Key Map



N



Research & Technology Center



1 : 4800



Map compiled on October 27, 2003 at 11:59 AM | Site located on base sheet no - 236NW10 | Date of Orthophotos - March 2002 | Orthophoto Images Licensed from VARGIS LLC.

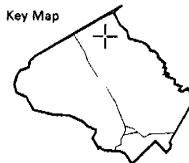
NOTICE

The planimetric, property, and topographic information shown on this map is based on copyrighted Map Products from the Montgomery County Department of Park and Planning of the Maryland -National Capital Park and Planning Commission, and may not be copied or reproduced without written permission from M-NCPPC.

Property lines are compiled by adjusting the property lines to topography created from aerial photography and should not be interpreted as actual field surveys. Planimetric features were compiled from 1:14400 scale aerial photography using stereo photogrammetric methods.

This map is created from a variety of data sources, and may not reflect the most current conditions in any one location and may not be completely accurate or up to date. All map features are approximately within five feet of their true location. This map may not be the same as a map of the same area plotted at an earlier time as the data is continuously updated. Use of this map, other than for general planning purposes is not recommended. - Copyright 1998

Key Map



1 : 4800

EXISTING CONDITIONS PLAN



VICINITY MAP
SCALE: 1" = 1/2 MILE

LEGENDS

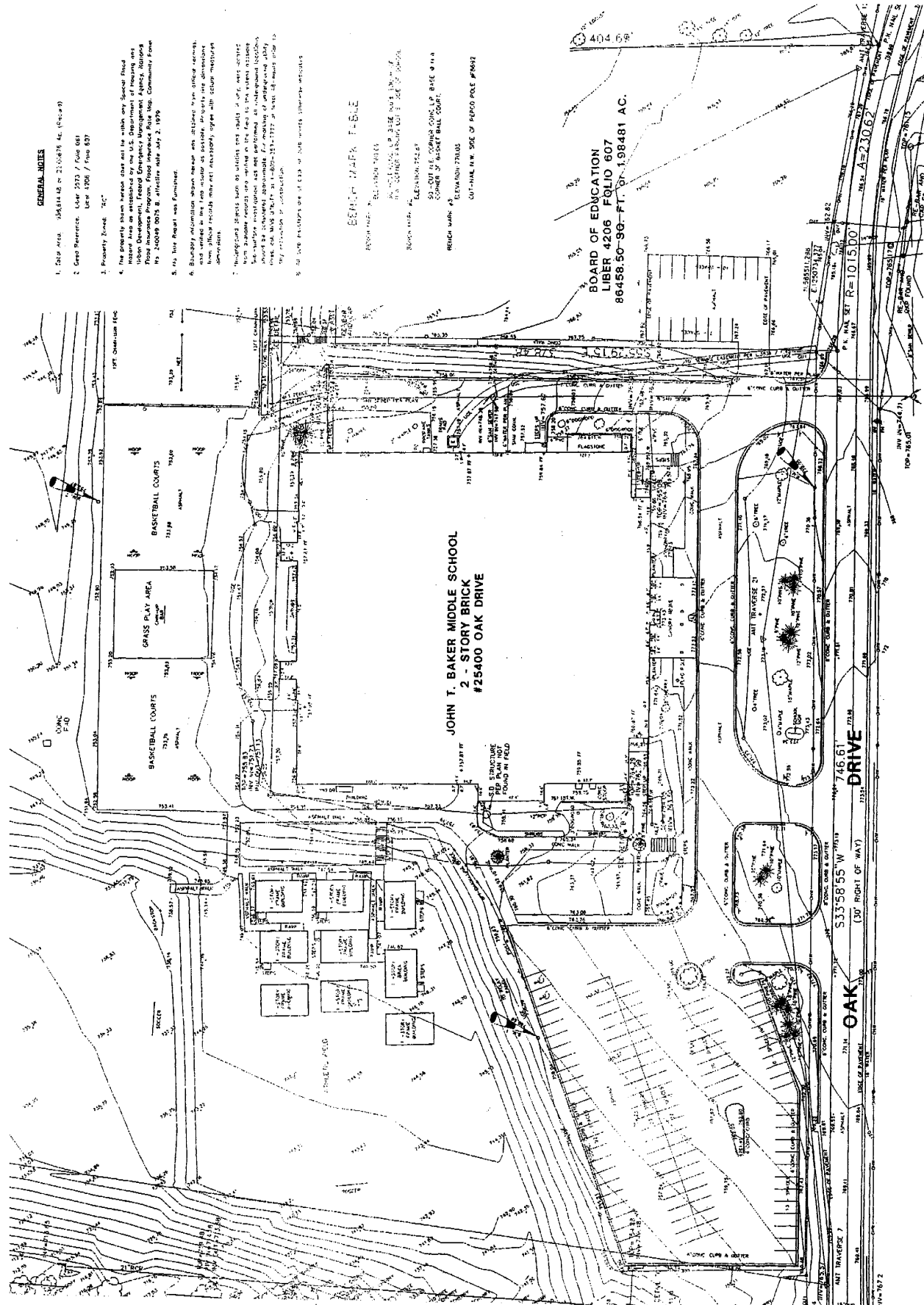
- 1. PROPERTY BOUNDARY
- 2. EXISTING BUILDING
- 3. EXISTING DRIVE
- 4. EXISTING SIDEWALK
- 5. EXISTING CURB
- 6. EXISTING DRIVEWAY
- 7. EXISTING DRIVEWAY
- 8. EXISTING DRIVEWAY
- 9. EXISTING DRIVEWAY
- 10. EXISTING DRIVEWAY
- 11. EXISTING DRIVEWAY
- 12. EXISTING DRIVEWAY
- 13. EXISTING DRIVEWAY
- 14. EXISTING DRIVEWAY
- 15. EXISTING DRIVEWAY
- 16. EXISTING DRIVEWAY
- 17. EXISTING DRIVEWAY
- 18. EXISTING DRIVEWAY
- 19. EXISTING DRIVEWAY
- 20. EXISTING DRIVEWAY
- 21. EXISTING DRIVEWAY
- 22. EXISTING DRIVEWAY
- 23. EXISTING DRIVEWAY
- 24. EXISTING DRIVEWAY
- 25. EXISTING DRIVEWAY
- 26. EXISTING DRIVEWAY
- 27. EXISTING DRIVEWAY
- 28. EXISTING DRIVEWAY
- 29. EXISTING DRIVEWAY
- 30. EXISTING DRIVEWAY
- 31. EXISTING DRIVEWAY
- 32. EXISTING DRIVEWAY
- 33. EXISTING DRIVEWAY
- 34. EXISTING DRIVEWAY
- 35. EXISTING DRIVEWAY
- 36. EXISTING DRIVEWAY
- 37. EXISTING DRIVEWAY
- 38. EXISTING DRIVEWAY
- 39. EXISTING DRIVEWAY
- 40. EXISTING DRIVEWAY
- 41. EXISTING DRIVEWAY
- 42. EXISTING DRIVEWAY
- 43. EXISTING DRIVEWAY
- 44. EXISTING DRIVEWAY
- 45. EXISTING DRIVEWAY
- 46. EXISTING DRIVEWAY
- 47. EXISTING DRIVEWAY
- 48. EXISTING DRIVEWAY
- 49. EXISTING DRIVEWAY
- 50. EXISTING DRIVEWAY
- 51. EXISTING DRIVEWAY
- 52. EXISTING DRIVEWAY
- 53. EXISTING DRIVEWAY
- 54. EXISTING DRIVEWAY
- 55. EXISTING DRIVEWAY
- 56. EXISTING DRIVEWAY
- 57. EXISTING DRIVEWAY
- 58. EXISTING DRIVEWAY
- 59. EXISTING DRIVEWAY
- 60. EXISTING DRIVEWAY
- 61. EXISTING DRIVEWAY
- 62. EXISTING DRIVEWAY
- 63. EXISTING DRIVEWAY
- 64. EXISTING DRIVEWAY
- 65. EXISTING DRIVEWAY
- 66. EXISTING DRIVEWAY
- 67. EXISTING DRIVEWAY
- 68. EXISTING DRIVEWAY
- 69. EXISTING DRIVEWAY
- 70. EXISTING DRIVEWAY
- 71. EXISTING DRIVEWAY
- 72. EXISTING DRIVEWAY
- 73. EXISTING DRIVEWAY
- 74. EXISTING DRIVEWAY
- 75. EXISTING DRIVEWAY
- 76. EXISTING DRIVEWAY
- 77. EXISTING DRIVEWAY
- 78. EXISTING DRIVEWAY
- 79. EXISTING DRIVEWAY
- 80. EXISTING DRIVEWAY
- 81. EXISTING DRIVEWAY
- 82. EXISTING DRIVEWAY
- 83. EXISTING DRIVEWAY
- 84. EXISTING DRIVEWAY
- 85. EXISTING DRIVEWAY
- 86. EXISTING DRIVEWAY
- 87. EXISTING DRIVEWAY
- 88. EXISTING DRIVEWAY
- 89. EXISTING DRIVEWAY
- 90. EXISTING DRIVEWAY
- 91. EXISTING DRIVEWAY
- 92. EXISTING DRIVEWAY
- 93. EXISTING DRIVEWAY
- 94. EXISTING DRIVEWAY
- 95. EXISTING DRIVEWAY
- 96. EXISTING DRIVEWAY
- 97. EXISTING DRIVEWAY
- 98. EXISTING DRIVEWAY
- 99. EXISTING DRIVEWAY
- 100. EXISTING DRIVEWAY

GENERAL NOTES

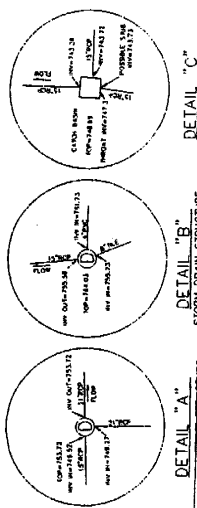
1. TRIP AREA: 198414 AC ± 2150878 AC (540.49)
2. CADD Reference: User 1993 / File 001
User 1998 / File 001
3. Property Bound: "R"
4. The property shown herein shall not be used for Federal Road project area as established by the U.S. Department of Housing and Urban Development, Federal Emergency Management Agency, National Flood Insurance Program, Flood Insurance Rate Map, Community Plan No. 44000-020 B, effective date July 3, 1979.
5. The site report was furnished.
6. Boundary information shown herein was obtained from official records and verified in the field under the direction of the engineer. It is understood that the engineer is not responsible for any errors or omissions in the field data furnished by the owner or other persons.
7. The proposed project shall be subject to all applicable laws, codes, ordinances, rules, regulations, orders, and decrees of the local, state, and federal government. The engineer is not responsible for any errors or omissions in the field data furnished by the owner or other persons.
8. The site report was furnished.

EXISTING MARK TABLE

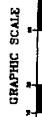
MARK NO.	DESCRIPTION	ELEVATION
1	REMARKS: SEE PLAN	78.12
2	REMARKS: SEE PLAN	78.12
3	REMARKS: SEE PLAN	78.12
4	REMARKS: SEE PLAN	78.12
5	REMARKS: SEE PLAN	78.12
6	REMARKS: SEE PLAN	78.12
7	REMARKS: SEE PLAN	78.12
8	REMARKS: SEE PLAN	78.12
9	REMARKS: SEE PLAN	78.12
10	REMARKS: SEE PLAN	78.12
11	REMARKS: SEE PLAN	78.12
12	REMARKS: SEE PLAN	78.12
13	REMARKS: SEE PLAN	78.12
14	REMARKS: SEE PLAN	78.12
15	REMARKS: SEE PLAN	78.12
16	REMARKS: SEE PLAN	78.12
17	REMARKS: SEE PLAN	78.12
18	REMARKS: SEE PLAN	78.12
19	REMARKS: SEE PLAN	78.12
20	REMARKS: SEE PLAN	78.12
21	REMARKS: SEE PLAN	78.12
22	REMARKS: SEE PLAN	78.12
23	REMARKS: SEE PLAN	78.12
24	REMARKS: SEE PLAN	78.12
25	REMARKS: SEE PLAN	78.12
26	REMARKS: SEE PLAN	78.12
27	REMARKS: SEE PLAN	78.12
28	REMARKS: SEE PLAN	78.12
29	REMARKS: SEE PLAN	78.12
30	REMARKS: SEE PLAN	78.12
31	REMARKS: SEE PLAN	78.12
32	REMARKS: SEE PLAN	78.12
33	REMARKS: SEE PLAN	78.12
34	REMARKS: SEE PLAN	78.12
35	REMARKS: SEE PLAN	78.12
36	REMARKS: SEE PLAN	78.12
37	REMARKS: SEE PLAN	78.12
38	REMARKS: SEE PLAN	78.12
39	REMARKS: SEE PLAN	78.12
40	REMARKS: SEE PLAN	78.12
41	REMARKS: SEE PLAN	78.12
42	REMARKS: SEE PLAN	78.12
43	REMARKS: SEE PLAN	78.12
44	REMARKS: SEE PLAN	78.12
45	REMARKS: SEE PLAN	78.12
46	REMARKS: SEE PLAN	78.12
47	REMARKS: SEE PLAN	78.12
48	REMARKS: SEE PLAN	78.12
49	REMARKS: SEE PLAN	78.12
50	REMARKS: SEE PLAN	78.12
51	REMARKS: SEE PLAN	78.12
52	REMARKS: SEE PLAN	78.12
53	REMARKS: SEE PLAN	78.12
54	REMARKS: SEE PLAN	78.12
55	REMARKS: SEE PLAN	78.12
56	REMARKS: SEE PLAN	78.12
57	REMARKS: SEE PLAN	78.12
58	REMARKS: SEE PLAN	78.12
59	REMARKS: SEE PLAN	78.12
60	REMARKS: SEE PLAN	78.12
61	REMARKS: SEE PLAN	78.12
62	REMARKS: SEE PLAN	78.12
63	REMARKS: SEE PLAN	78.12
64	REMARKS: SEE PLAN	78.12
65	REMARKS: SEE PLAN	78.12
66	REMARKS: SEE PLAN	78.12
67	REMARKS: SEE PLAN	78.12
68	REMARKS: SEE PLAN	78.12
69	REMARKS: SEE PLAN	78.12
70	REMARKS: SEE PLAN	78.12
71	REMARKS: SEE PLAN	78.12
72	REMARKS: SEE PLAN	78.12
73	REMARKS: SEE PLAN	78.12
74	REMARKS: SEE PLAN	78.12
75	REMARKS: SEE PLAN	78.12
76	REMARKS: SEE PLAN	78.12
77	REMARKS: SEE PLAN	78.12
78	REMARKS: SEE PLAN	78.12
79	REMARKS: SEE PLAN	78.12
80	REMARKS: SEE PLAN	78.12
81	REMARKS: SEE PLAN	78.12
82	REMARKS: SEE PLAN	78.12
83	REMARKS: SEE PLAN	78.12
84	REMARKS: SEE PLAN	78.12
85	REMARKS: SEE PLAN	78.12
86	REMARKS: SEE PLAN	78.12
87	REMARKS: SEE PLAN	78.12
88	REMARKS: SEE PLAN	78.12
89	REMARKS: SEE PLAN	78.12
90	REMARKS: SEE PLAN	78.12
91	REMARKS: SEE PLAN	78.12
92	REMARKS: SEE PLAN	78.12
93	REMARKS: SEE PLAN	78.12
94	REMARKS: SEE PLAN	78.12
95	REMARKS: SEE PLAN	78.12
96	REMARKS: SEE PLAN	78.12
97	REMARKS: SEE PLAN	78.12
98	REMARKS: SEE PLAN	78.12
99	REMARKS: SEE PLAN	78.12
100	REMARKS: SEE PLAN	78.12



STA.	TRaverse TABLE	COORDINATES	ELEV.
6	584519.8874	1250077.2031	783.212
7	584523.3463	1250340.1010	787.585
8	584541.3105	1249776.9884	732.479
9	585368.3588	1249729.1402	786.238
10	586205.3866	1249907.8675	750.143
11	595736.5715	1250427.4978	782.529
12	585878.9827	1250063.8420	766.570
21	585360.2227	1250586.7859	773.113



DETAIL "A"
DETAIL "B"
DETAIL "C"



GRAPHIC SCALE