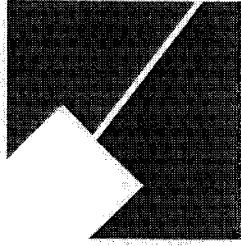


#05

M-NCPPC



MONTGOMERY COUNTY DEPARTMENT OF PARK AND PLANNING

THE MARYLAND-NATIONAL CAPITAL
PARK AND PLANNING COMMISSION

8787 Georgia Avenue
Silver Spring, Maryland 20910-3760
301-495-4500, www.mncppc.org

M E M O R A N D U M

DATE: January 30, 2004
TO: Montgomery County Planning Board
FROM: A. Malcolm Shaneman
Development Review Division
(301) 495-4587
SUBJECT: Informational Maps for Subdivision Items on the
Planning Board's Agenda for February 05, 2004.

Attached are copies of plan drawings for Item #05, #06, #07 and #08. These subdivision items are scheduled for Planning Board consideration on February 05, 2004. The items are further identified as follows:

Agenda Item #05 -Preliminary Plan 1-04039
Silver Spring Gateway

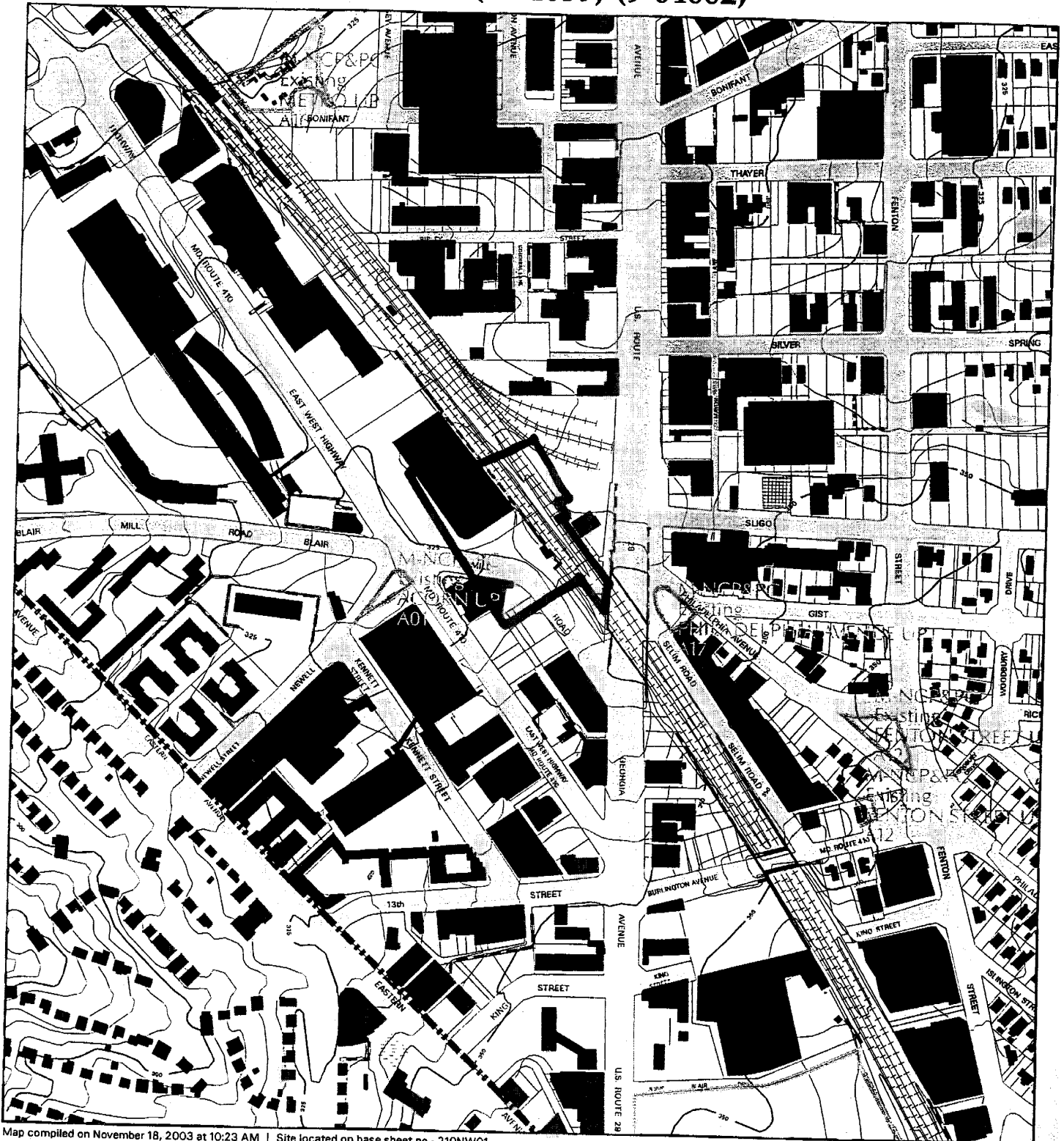
Agenda Item #06 -Preliminary Plan 1-04008
Glen Echo Heights

Agenda Item #07 -Pre-Preliminary Plan 7-04011
Nottingham

Agenda Item #08 -Pre-Preliminary Plan 7-03054
The Towns of Boland Farm

Attachment

SILVER SPRING GATEWAY (1-04039) (9-04002)



Map compiled on November 18, 2003 at 10:23 AM | Site located on base sheet no - 210NW01

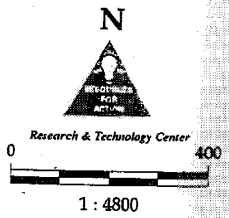
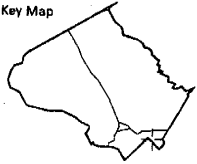
NOTICE

The planimetric, property, and topographic information shown on this map is based on copyrighted Map Products from the Montgomery County Department of Park and Planning of the Maryland -National Capital Park and Planning Commission, and may not be copied or reproduced without written permission from M-NCPPC.

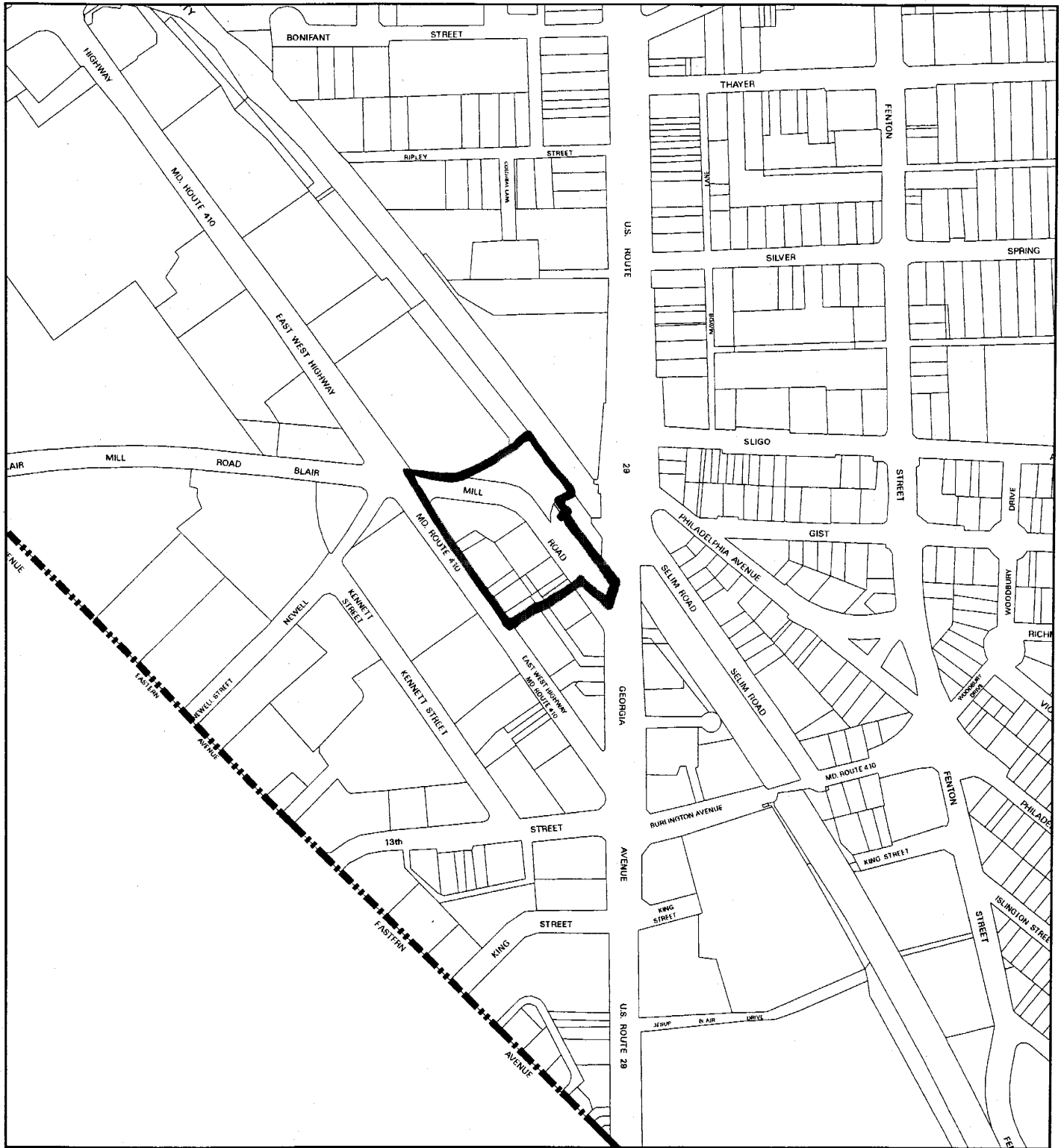
Property lines are compiled by adjusting the property lines to topography created from aerial photography and should not be interpreted as actual field surveys. Planimetric features were compiled from 1:14400 scale aerial photography using stereo photogrammetric methods.

This map is created from a variety of data sources, and may not reflect the most current conditions in any one location and may not be completely accurate or up to date. All map features are approximately within five feet of their true location. This map may not be the same as a map of the same area plotted at an earlier time as the data is continuously updated. Use of this map, other than for general planning purposes is not recommended. - Copyright 1998

MONTGOMERY COUNTY DEPARTMENT OF PARK AND PLANNING
 THE MARYLAND-NATIONAL CAPITAL PARK AND PLANNING COMMISSION
 8787 Georgia Avenue - Silver Spring, Maryland 20910-3760



SILVER SPRING GATEWAY (1-04039)



Map compiled on January 30, 2004 at 10:49 AM | Site located on base sheet no - 210NW01

NOTICE

The planimetric, property, and topographic information shown on this map is based on copyrighted Map Products from the Montgomery County Department of Park and Planning of the Maryland-National Capital Park and Planning Commission, and may not be copied or reproduced without written permission from M-NCPPC.

Property lines are compiled by adjusting the property lines to topography created from aerial photography and should not be interpreted as actual field surveys. Planimetric features were compiled from 1:14400 scale aerial photography using stereo photogrammetric methods.

This map is created from a variety of data sources, and may not reflect the most current conditions in any one location and may not be completely accurate or up to date. All map features are approximately within five feet of their true location. This map may not be the same as a map of the same area plotted at an earlier time as the data is continuously updated. Use of this map, other than for general planning purposes is not recommended. - Copyright 1998

Key Map

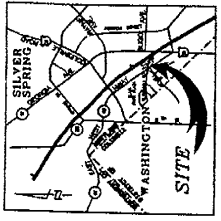


Research & Technology Center

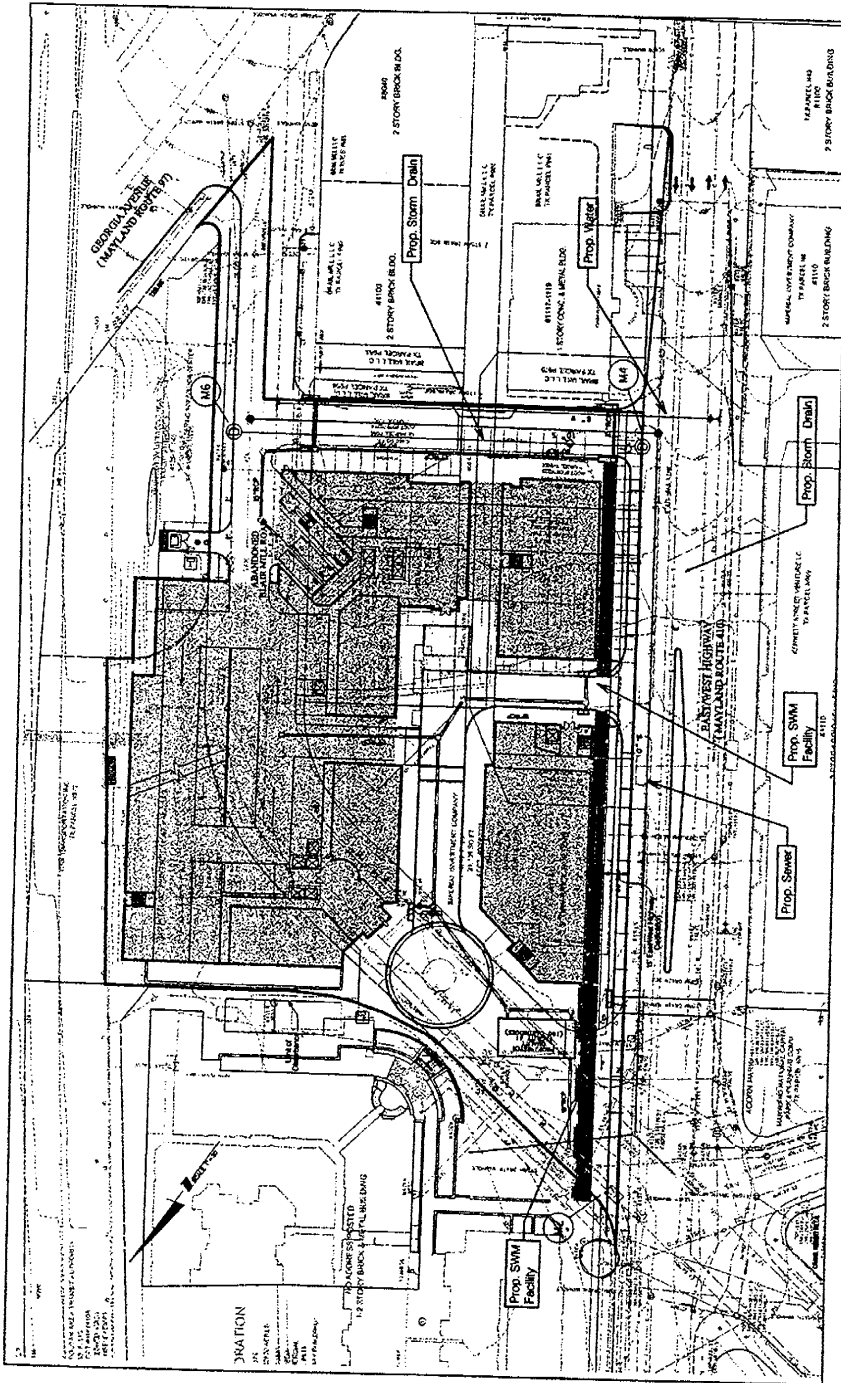


1 : 4800





LEGEND	
EXISTING	
PROPERTY LINE	—
CURB LINE	—
WATER MAIN	—
WATER VALVE	○
GAS MAIN	—
SEWER MAIN	—
STONE DRAIN PIPING	—
STONE DRAIN MANHOLE	○
FENCE	—
PROPOSED	
PROP. WATER	—
PROP. W.V.	—
PROP. G.A.S.	—
PROP. SAN	—
PROP. STORM	—
PROP. STORM MANHOLE	○



UTILITY AND PAVING PLAN
SILVER SPRING GATEWAY
1878 ELECTION DISTRICT
MONTGOMERY COUNTY, MARYLAND

THIS UTILITY NOTE
THIS UTILITY PLAN IS A PART OF THE PROJECT'S UTILITY PLAN AND SHALL BE CONSIDERED AS SUCH. IT IS THE RESPONSIBILITY OF THE ENGINEER TO VERIFY THE ACCURACY OF THE INFORMATION PROVIDED HEREON. THE ENGINEER SHALL BE RESPONSIBLE FOR OBTAINING ALL NECESSARY PERMITS FROM THE APPROPRIATE AGENCIES. THE ENGINEER SHALL BE RESPONSIBLE FOR OBTAINING ALL NECESSARY INFORMATION FROM THE UTILITY COMPANIES. THE ENGINEER SHALL BE RESPONSIBLE FOR OBTAINING ALL NECESSARY INFORMATION FROM THE UTILITY COMPANIES. THE ENGINEER SHALL BE RESPONSIBLE FOR OBTAINING ALL NECESSARY INFORMATION FROM THE UTILITY COMPANIES.

PROJECT INFORMATION			
PROJECT NO.	DATE	SCALE	REV.
1878	1/15/09	AS SHOWN	3

OWNER INFORMATION			
NAME	ADDRESS	CITY	STATE
1878 ELECTION DISTRICT	1878 ELECTION DISTRICT	SILVER SPRING	MARYLAND

ENGINEER INFORMATION			
NAME	ADDRESS	CITY	STATE
Loiederman Soltész Associates, Inc.	1878 ELECTION DISTRICT	SILVER SPRING	MARYLAND

Loiederman Soltész Associates, Inc.

Civil Engineering
Land Surveying
Environmental Science

1878 ELECTION DISTRICT
SILVER SPRING, MARYLAND

DATE: 1/15/09
SCALE: AS SHOWN
REV: 3

PROJECT NO.: 1878

