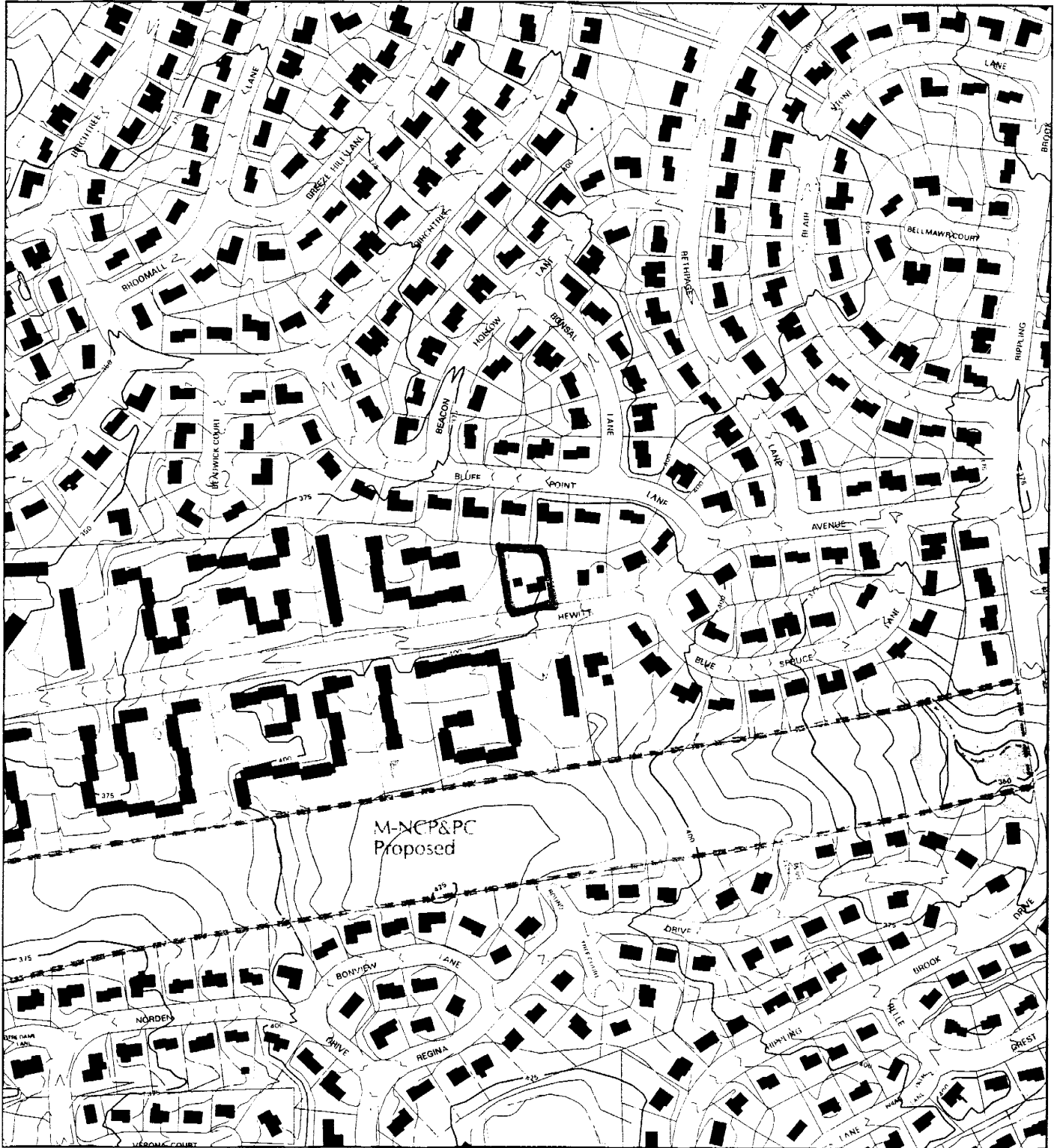


# HERMITAGE PARK (1-04010)



Map compiled on February 12, 2004 at 2:34 PM | Site located on base sheet no - 218NW03

**NOTICE**

The planimetric, property, and topographic information shown on this map is based on copyrighted Map Products from the Montgomery County Department of Park and Planning of the Maryland-National Capital Park and Planning Commission, and may not be copied or reproduced without written permission from M-NCPPC.

Property lines are compiled by adjusting the property lines to topography created from aerial photography and should not be interpreted as actual field surveys. Planimetric features were compiled from 1:14400 scale aerial photography using stereo photogrammetric methods.

This map is created from a variety of data sources, and may not reflect the most current conditions in any one location and may not be completely accurate or up to date. All map features are approximately within five feet of their true location. This map may not be the same as a map of the same area plotted at an earlier time as the data is continuously updated. Use of this map, other than for general planning purposes is not recommended. - Copyright 1998

Key Map



N

Research & Technology Center

1 : 4800

# HERMITAGE PARK (1-04010)



Map compiled on February 12, 2004 at 2:56 PM ! Site located on base sheet no - 218NW03

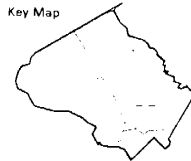
## NOTICE

The planimetric, property, and topographic information shown on this map is based on copyrighted Map Products from the Montgomery County Department of Park and Planning of the Maryland - National Capital Park and Planning Commission, and may not be copied or reproduced without written permission from M-NCPPC.

Property lines are compiled by adjusting the property lines to topography created from aerial photography and should not be interpreted as actual field surveys. Planimetric features were compiled from 1:14400 scale aerial photography using stereo photogrammetric methods.

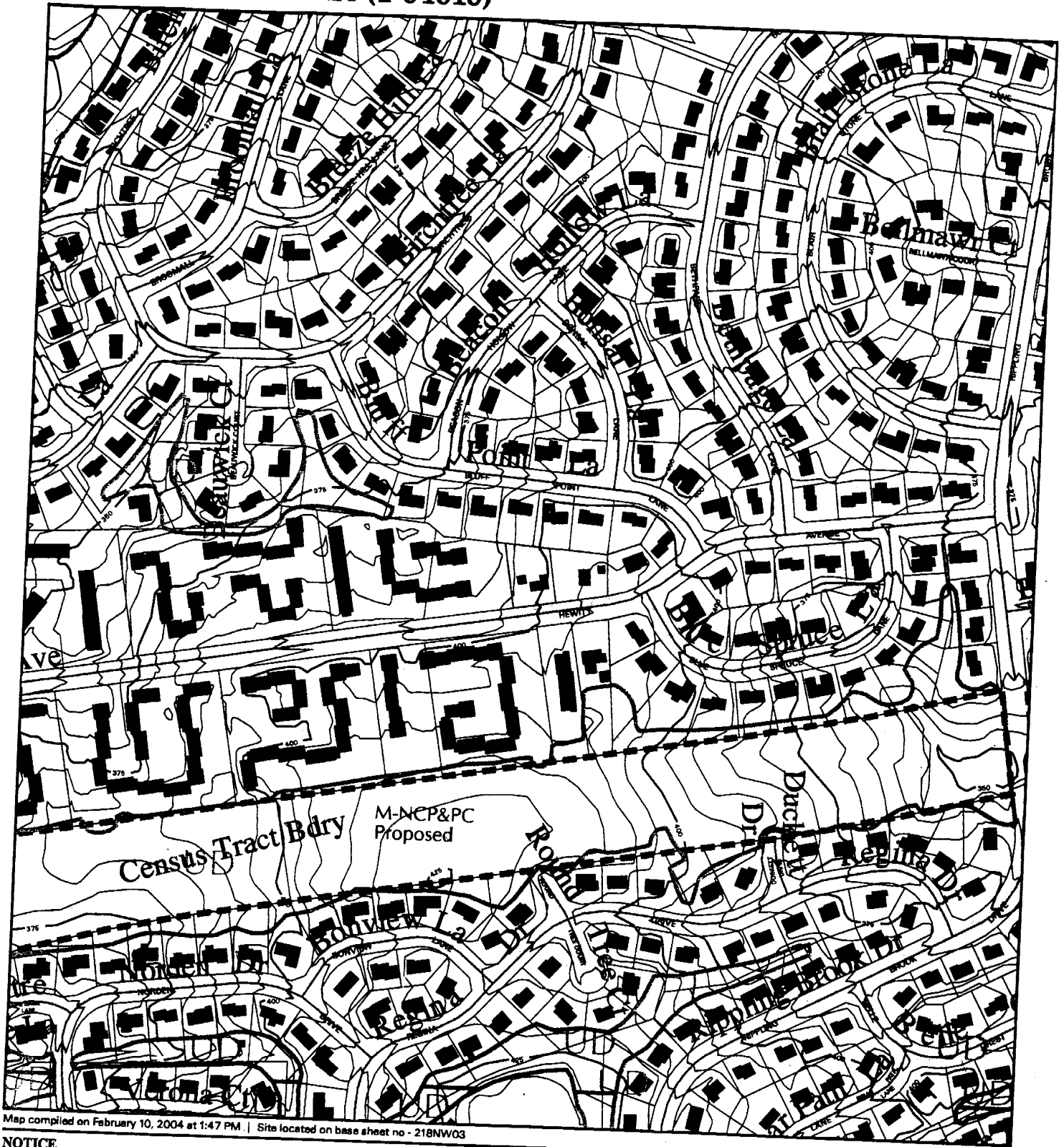
This map is created from a variety of data sources, and may not reflect the most current conditions in any one location and may not be completely accurate or up to date. All map features are approximately within five feet of their true location. This map may not be the same as a map of the same area plotted at an earlier time as the data is continuously updated. Use of this map, other than for general planning purposes is not recommended. - Copyright 1998

Key Map



1 : 4800

# HERMITAGE PARK (1-04010)

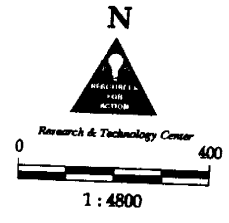
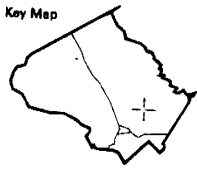


Map compiled on February 10, 2004 at 1:47 PM | Site located on base sheet no - 218NW03

**NOTICE**

The planimetric, property, and topographic information shown on this map is based on copyrighted Map Products from the Montgomery County Department of Park and Planning of the Maryland -National Capital Park and Planning Commission, and may not be copied or reproduced without written permission from M-NCPPC.

Property lines are compiled by adjusting the property lines to topography created from aerial photography using stereo photogrammetric methods. Planimetric features were compiled from 1:14400 scale aerial photography and should not be interpreted as actual field surveys. This map is created from a variety of data sources, and may not reflect the most current conditions in any one location and may not be completely accurate or up to date. All map features are approximately within five feet of their true location. This map may not be the same as a map of the same area plotted at an earlier time as the data is continuously updated. Use of this map, other than for the general planning purposes is not recommended. - Copyright 1998



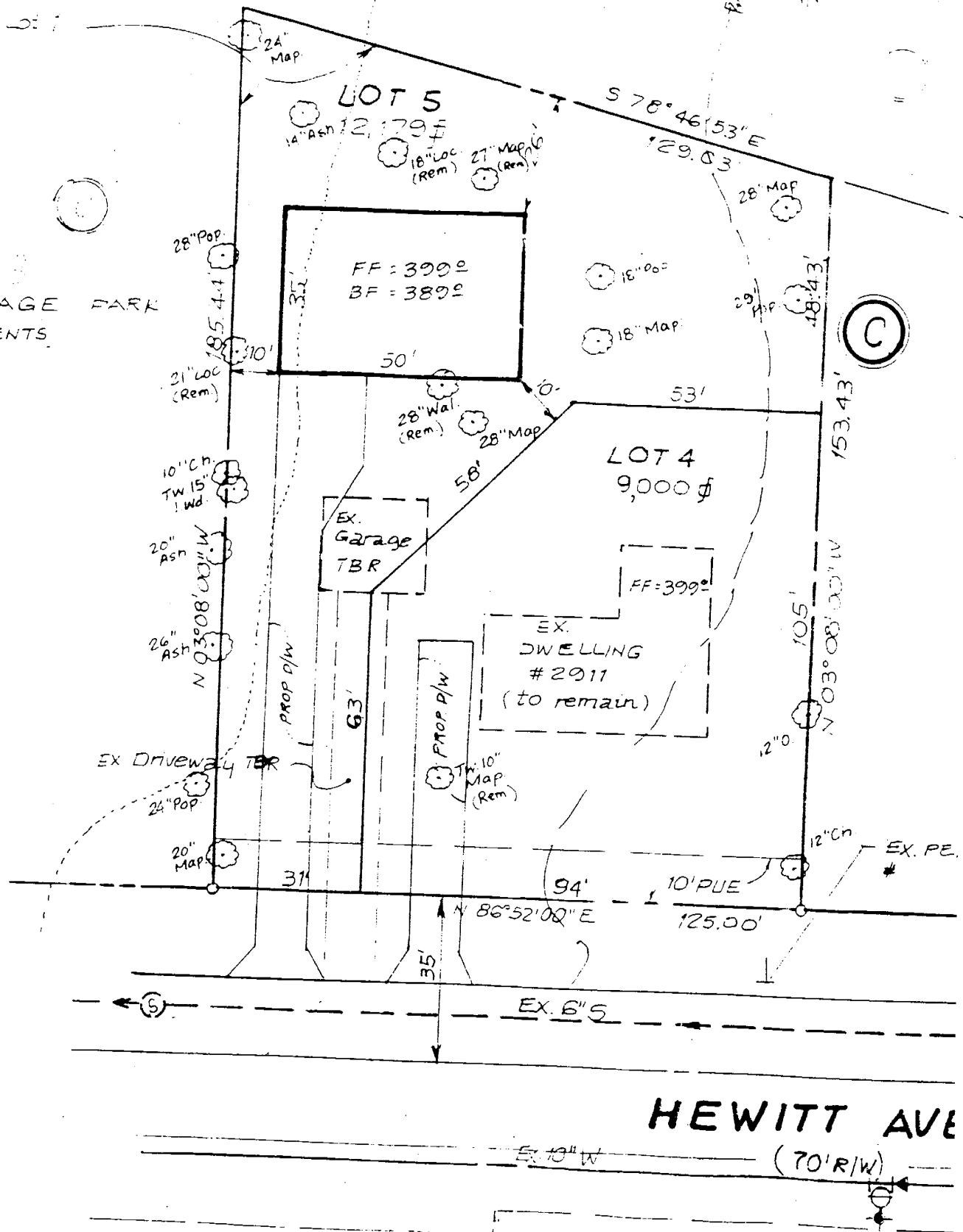
**MONTGOMERY COUNTY DEPARTMENT OF PARK AND PLANNING**  
**THE MARYLAND-NATIONAL CAPITAL PARK AND PLANNING COMMISSION**  
 8787 Georgia Avenue - Silver Spring, Maryland 20910-3760

Hermitage Part 1-03081 – Tabular Summary

Lot #	Block	Frontage Ft	Alignment	Size	Shape	Width Ft.	Lot Area
1	17	165	Perpendicular	14261	Irregular	150'	5100
2	17	80	Perpendicular	12016	Corner	74'	4440
1	13	68	Perpendicular	14781	Corner	48'	4030
1	14	96	Perpendicular	15899	Corner	90'	7056
2	14	118	Perpendicular	16562	Irregular	105'	8825
3	14	103	Perpendicular	15066	Irregular	58'	6264
4	14	100	Perpendicular	15199	Rectangular	68'	7100
5	14	100	Perpendicular	13202	Rectangular	75'	5850
6	14	80	Perpendicular	13850	Corner	68	5304
Proposed	Lots	31	Perpendicular	12,179	Pipe	125'	4182
		94	Perpendicular	9000	Irregular	94'	3250

Part of Lot 1  
21,179 sq ft

HERMITAGE PARK  
(APARTMENTS)  
R-20



LOT 5  
HERMITAGE PARK  
(APARTMENTS)  
R-20

LOT 4  
HERMITAGE PARK  
(APARTMENTS)  
R-20