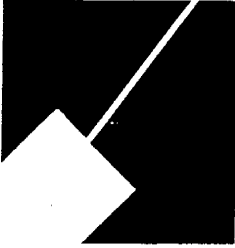


Item #4

M-NCPPC



MONTGOMERY COUNTY DEPARTMENT OF PARK AND PLANNING

THE MARYLAND-NATIONAL CAPITAL
PARK AND PLANNING COMMISSION

8787 Georgia Avenue
Silver Spring, Maryland 20910-3760

M E M O R A N D U M

DATE: February 13, 2004
TO: Montgomery County Planning Board
FROM: A. Malcolm Shaneman
Development Review Division
(301) 495-4587
SUBJECT: Informational Maps for Subdivision Items on the
Planning Board's Agenda for February 19, 2004.

Attached are copies of plan drawings for Item #03, #04, #06, #08, and #09. These subdivision items are scheduled for Planning Board consideration on February 19, 2004. The items are further identified as follows:

Agenda Item #03 -Preliminary Plan 1-04010
Hermitage Park

Agenda Item #04 -Preliminary Plan 1-04011
Meadowsweet

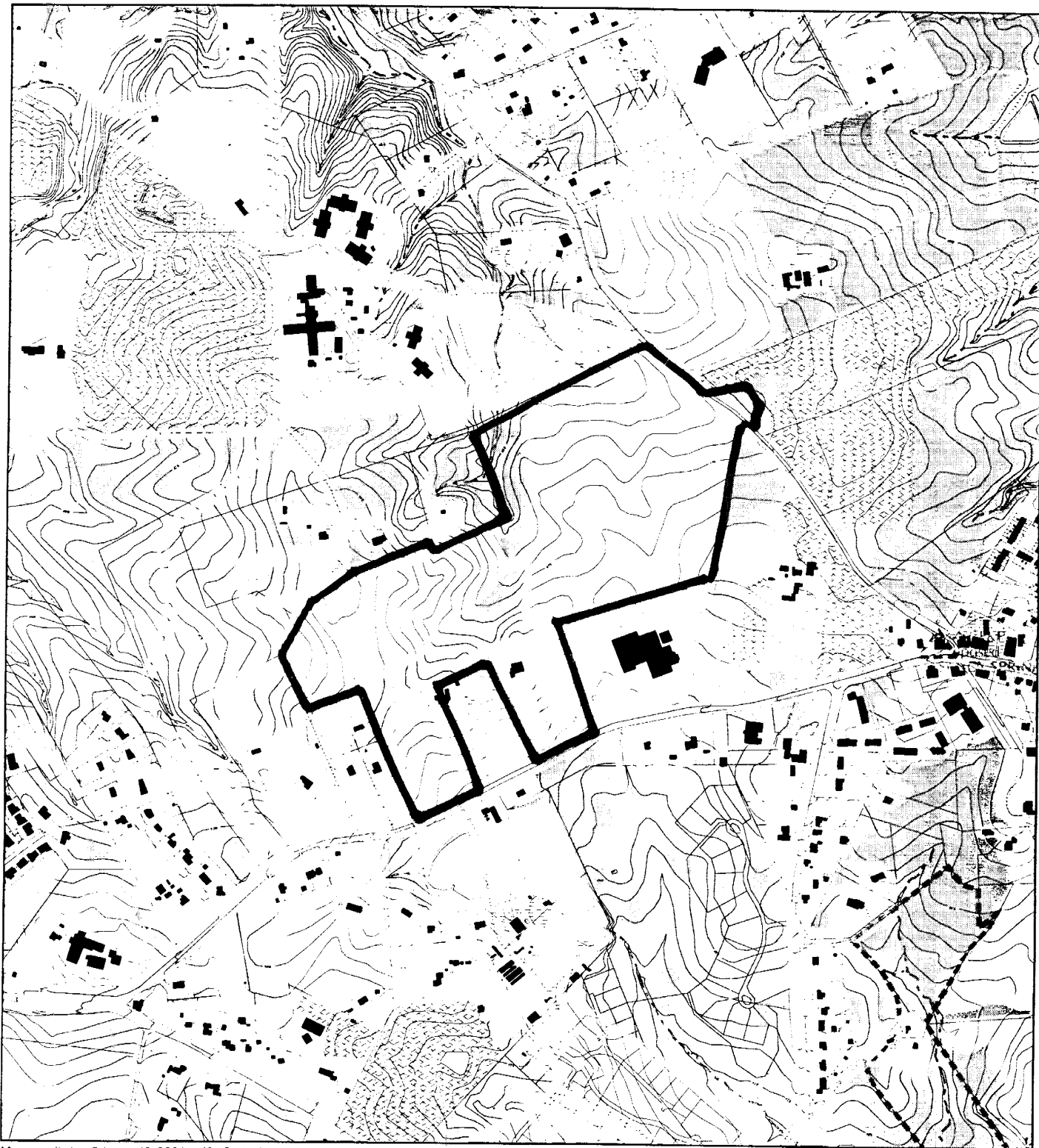
Agenda Item #06 -Preliminary Plan 1-04041
Arlington East

Agenda Item #08 -Preliminary Plan 1-04025
Woodglen Commons

Agenda Item #09 -Preliminary Plan 1-04043
Carl Property

Attachment

MEADOWSWEET (1-04011)



Map compiled on February 13, 2004 at 10:45 AM | Site located on base sheet no - 224NW02

NOTICE

The planimetric, property, and topographic information shown on this map is based on copyrighted Map Products from the Montgomery County Department of Park and Planning of the Maryland - National Capital Park and Planning Commission, and may not be copied or reproduced without written permission from M-NCPPC.

Property lines are compiled by adjusting the property lines to topography created from aerial photography and should not be interpreted as actual field surveys. Planimetric features were compiled from 1:14400 scale aerial photography using stereo photogrammetric methods.

This map is created from a variety of data sources, and may not reflect the most current conditions in any one location and may not be completely accurate or up to date. All map features are approximately within five feet of their true location. This map may not be the same as a map of the same area plotted at an earlier time as the data is continuously updated. Use of this map, other than for general planning purposes is not recommended. - Copyright 1998

Key Map

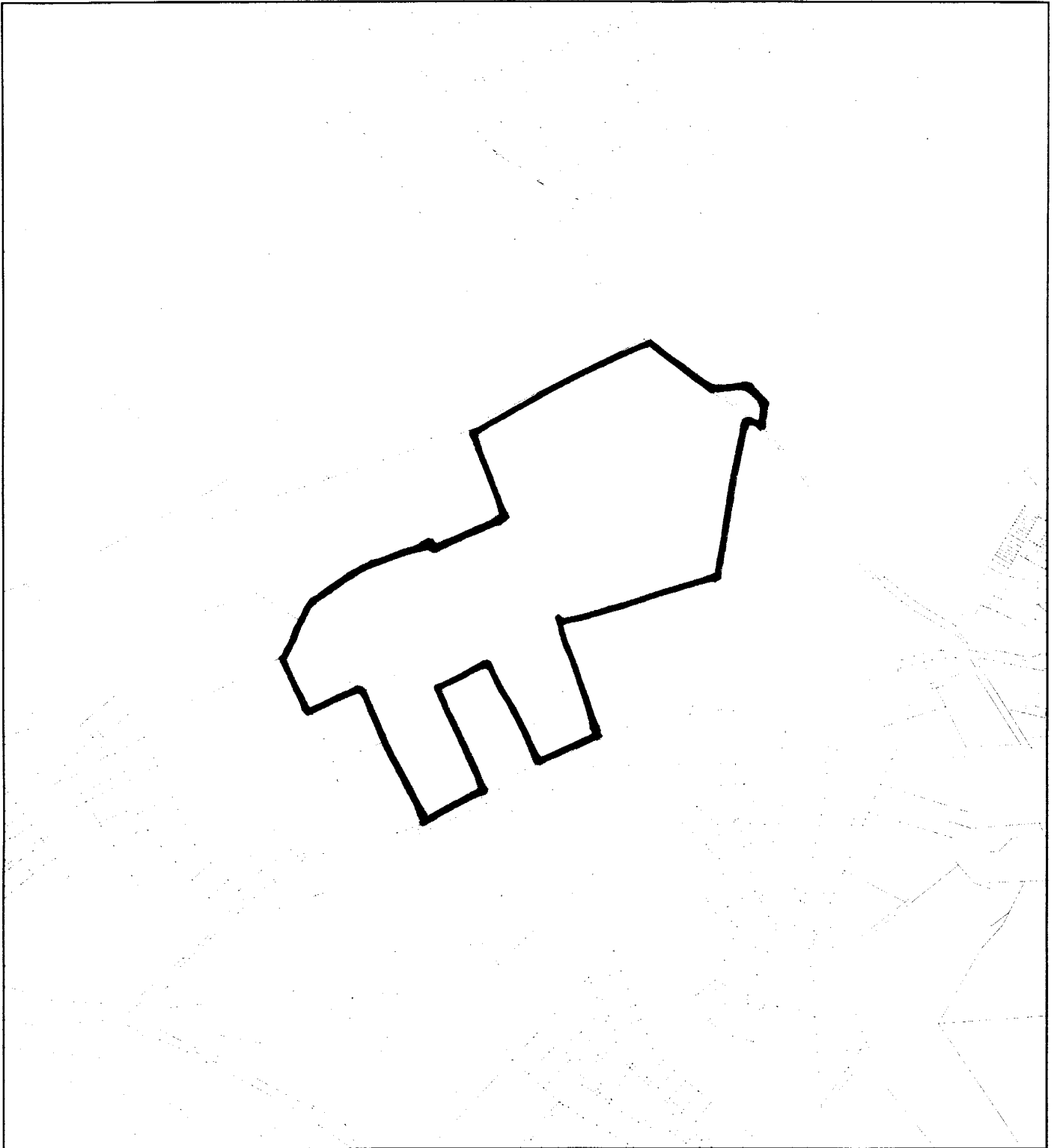


Research & Technology Center



1 : 9600

MEADOWSWEET (1-04011)



Map compiled on February 13, 2004 at 10:41 AM - Site located on base sheet no - 224NW02

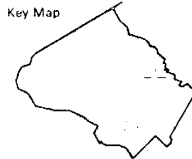
NOTICE

The planimetric, property, and topographic information shown on this map is based on copyrighted Map Products from the Montgomery County Department of Park and Planning of the Maryland-National Capital Park and Planning Commission, and may not be copied or reproduced without written permission from M-NCPPC.

Property lines are compiled by adjusting the property lines to topography created from aerial photography and should not be interpreted as actual field surveys. Planimetric features were compiled from 1:14400 scale aerial photography using stereo photogrammetric methods.

This map is created from a variety of data sources, and may not reflect the most current conditions in any one location and may not be completely accurate or up to date. All map features are approximately within five feet of their true location. This map may not be the same as a map of the same area plotted at an earlier time as the data is continuously updated. Use of this map, other than for general planning purposes is not recommended. - Copyright 1998

Key Map



N



Research & Technology Center

0 800

1 : 9600

