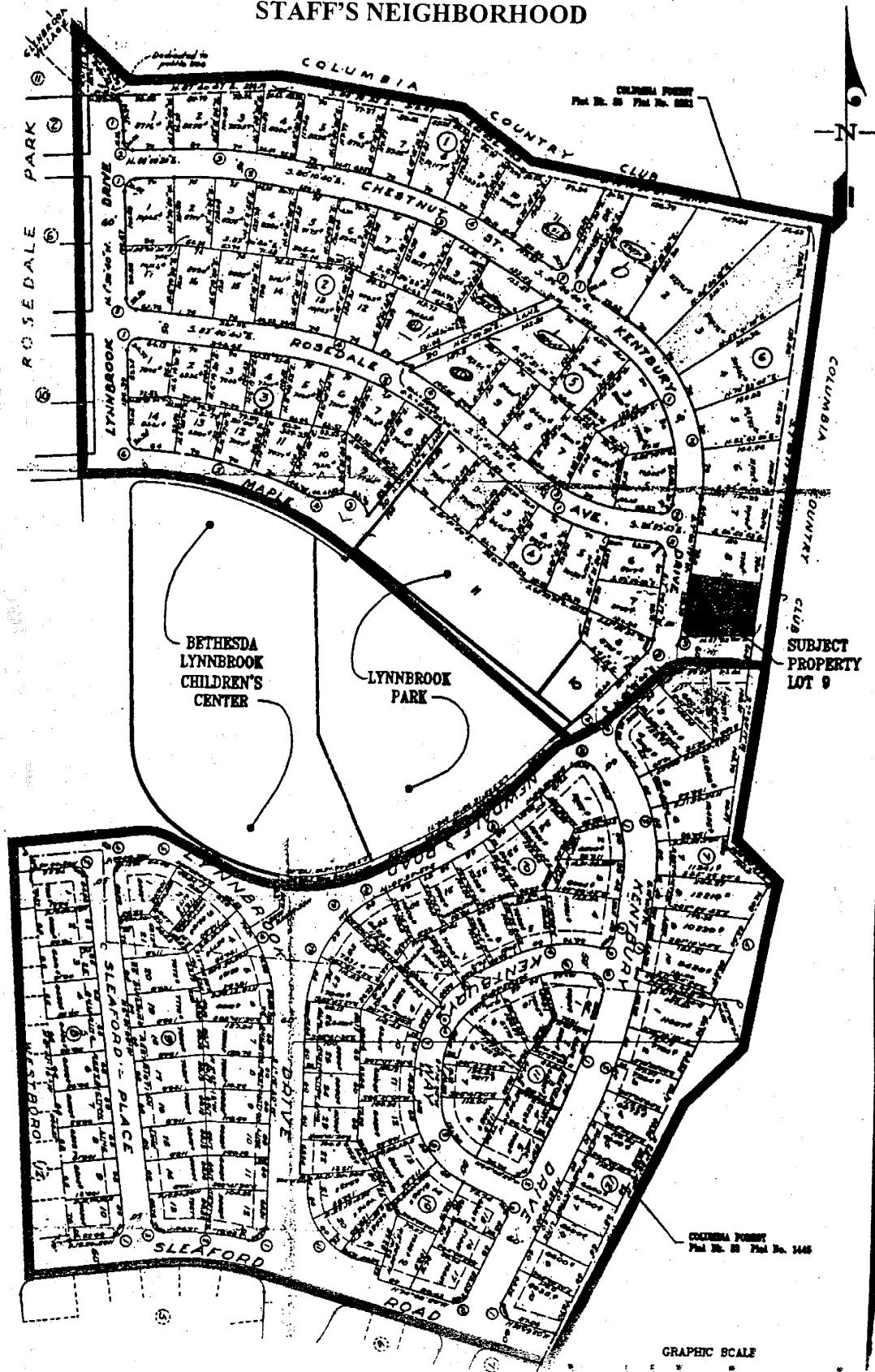


STAFF'S NEIGHBORHOOD



NEIGHBORHOOD LIMITS

V:\03012\Pre-Primary\03012\Pre-Primary\03012\Pre-Primary.dwg 12/30/2003 03:39:35 PM ESI

GLW
 GONCHER LITTA & WIER, PA
 CIVIL ENGINEER, LAND SURVEYOR, LAND PLANNER, LANDSCAPE ARCHITECT
 1000 N. 10TH ST. SUITE 200 - WASHINGTON, DC 20002
 TEL: 202-462-1100 FAX: 202-462-1101

DATE	DESCRIPTION	BY	APP'D

Columbia Forest Resubdivision

Staff's Neighborhood								
	Lot	Block	Lot Size	Frontage	Alignment	Shape	Width	Lot Area
1	16	10	5744	60	Perpendicular	Rectangular	60	2131
2	4	11	6223	65	Perpendicular	Rectangular	65	2385
3	3	11	6392	70	Perpendicular	Rectangular	70	2461
4	30	10	6500	65	Perpendicular	Rectangular	60	2585
5	2	11	6531	80	Perpendicular	Rectangular	78	2312
6	2	10	6570	80	Perpendicular	Rectangular	74	2437
7	6	12	6600	60	Perpendicular	Rectangular	60	2729
8	7	12	6600	60	Perpendicular	Rectangular	60	2729
9	8	12	6600	60	Perpendicular	Rectangular	60	2729
10	9	12	6600	60	Perpendicular	Rectangular	60	2729
11	15	10	6616	70	Corner	Corner	70	1776
12	29	10	6625	80	Perpendicular	Rectangular	72	2667
13	5	12	6649	60	Perpendicular	Rectangular	60	2762
14	31	10	6762	65	Perpendicular	Rectangular	65	2737
15	2	7	6807	100	Corner	Triangular	81	2756
16	2	3	6836	70	Perpendicular	Rectangular	70	2731
17	4	12	6972	60	Perpendicular	Rectangular	61	2958
18	6	3	7100	75	Perpendicular	Rectangular	72	2949
19	7	3	7162	75	Perpendicular	Rectangular	72	2974
20	3	3	7208	70	Perpendicular	Rectangular	70	3008
21	1	7	7231	70	Perpendicular	Rectangular	68	3052
22	3	12	7234	60	Perpendicular	Rectangular	61	3138
23	4	3	7307	70	Perpendicular	Rectangular	69	3120
24	32	10	7333	65	Perpendicular	Rectangular	65	3059
25	17	10	7353	73	Corner	Corner	73	2300
26	5	11	7368	78	Corner	Corner	78	2276
27	5	3	7464	75	Perpendicular	Rectangular	72	3226
28	8	3	7646	75	Perpendicular	Rectangular	72	3356
29	2	12	7724	60	Perpendicular	Rectangular	61	3479
30	4	5	7789	90	Perpendicular	Rectangular	81	3238
31	3	1	7835	70	Perpendicular	Rectangular	70	3407
32	1	3	7898	84	Perpendicular	Rectangular	82	2408
33	3	7	7911	60	Perpendicular	Rectangular	60	3598
34	11	3	7977	70	Perpendicular	Rectangular	73	3490
35	1	4	7986	70	Perpendicular	Rectangular	70	3594
36	2	4	7986	70	Perpendicular	Rectangular	70	3594
37	3	10	8008	70	Perpendicular	Rectangular	67	3599
38	4	7	8108	102	Corner	Corner	100	2690
39	34	10	8201	75	Perpendicular	Rectangular	77	3504
40	5	1	8238	70	Perpendicular	Rectangular	70	3778
41	6	2	8242	75	Perpendicular	Rectangular	72	3750
42	2	1	8258	80	Perpendicular	Rectangular	80	3515
43	9	2	8320	76	Perpendicular	Rectangular	73	3829
44	4	1	8396	70	Perpendicular	Rectangular	70	3888
45	8	5	8400	70	Perpendicular	Rectangular	70	3901
46	9	5	8400	70	Perpendicular	Rectangular	70	3901
47	6	5	8448	90	Perpendicular	Rectangular	85	3712
48	7	2	8515	75	Perpendicular	Rectangular	72	3989

Columbia Forest Resubdivision

	Lot	Block	Lot Size	Frontage	Alignment	Shape	Width	Lot Area
49	8	2	8537	75	Perpendicular	Rectangular	72	4012
50	3	4	8645	70	Perpendicular	Rectangular	73	4003
51	6	1	8703	70	Perpendicular	Rectangular	70	4076
52	2	2	8710	75	Perpendicular	Rectangular	74	4116
53	8	4	8715	98	Perpendicular	Rectangular	88	3970
54	1	1	8716	90	Perpendicular	Rectangular	90	2993
55	15	2	8880	74	Perpendicular	Rectangular	74	4200
56	16	2	8880	74	Perpendicular	Rectangular	74	4201
57	7	5	8910	75	Perpendicular	Rectangular	71	4188
58	6	4	8917	80	Corner	Corner	80	3072
59	33	10	8931	65	Perpendicular	Rectangular	67	4290
60	10	12	8935	88	Perpendicular	Rectangular	88	3026
61	3	2	8935	75	Perpendicular	Rectangular	73	4293
62	3	5	8959	90	Perpendicular	Rectangular	81	4259
63	10	1	9104	70	Perpendicular	Rectangular	72	4277
64	7	4	9107	94	Perpendicular	Rectangular	87	4268
65	14	2	9161	74	Perpendicular	Rectangular	75	4381
66	5	2	9175	75	Perpendicular	Rectangular	75	4412
67	1	11	9254	101	Corner	Corner	101	2972
68	4	2	9280	75	Perpendicular	Rectangular	75	4515
69	9	1	9336	70	Perpendicular	Rectangular	72	4508
70	7	1	9355	70	Perpendicular	Rectangular	72	4540
71	10	7	9430	55	Perpendicular	Rectangular	59	4667
72	8	6	9750	75	Perpendicular	Rectangular	75	4846
73	12	2	9763	74	Perpendicular	Rectangular	77	4762
74	4	4	9982	70	Perpendicular	Rectangular	75	4949
75	13	2	10023	74	Perpendicular	Rectangular	77	4991
76	7	6	10040	75	Perpendicular	Rectangular	75	5040
77	10	2	10075	123	Perpendicular	Rectangular	109	4690
78	8	1	10117	70	Perpendicular	Rectangular	72	5159
79	17	2	10126	84	Perpendicular	Rectangular	86	3972
80	1	10	10137	122	Corner	Corner	122	3382
81	5	4	10158	70	Perpendicular	Rectangular	73	5106
82	9	7	10239	60	Perpendicular	Rectangular	60	5219
83	6	7	10455	60	Perpendicular	Rectangular	64	5343
84	2	5	10589	90	Perpendicular	Rectangular	86	5398
85	5	5	10605	110	Corner	Corner	110	4555
86	1	2	10866	90	Perpendicular	Rectangular	90	4218
87	1	12	11007	84	Perpendicular	Rectangular	83	5674
88	4	10	11231	109	Corner	Corner	109	4661
89	7	7	11241	60	Perpendicular	Rectangular	64	5353
90	10	4	11250	88	Perpendicular	Rectangular	88	4905
91	10	5	11254	130	Perpendicular	Rectangular	118	5410
92	6	6	11471	70	Perpendicular	Rectangular	75	6027
93	8	7	12210	80	Perpendicular	Rectangular	60	6614
94	11	2	12461	50	Perpendicular	Rectangular	68	6598
95	5	7	13883	60	Perpendicular	Rectangular	65	7788
96	1	5	13964	70	Perpendicular	Rectangular	84	7551
97	5	6	14167	70	Perpendicular	Rectangular	75	8018
98	11	1	15913	110	Perpendicular	Rectangular	107	7216
99	4	6	20466	70	Perpendicular	Radial	75	12736

Columbia Forest Resubdivision

Lot	Block	Lot Size	Frontage	Alignment	Shape	Width	Lot Area	
100	1	6	22391	92	Perpendicular	Rectangular	95	12320
101	2	6	27221	70	Perpendicular	Rectangular	75	18453
102	3	6	32076	70	Perpendicular	Radial	75	22308
Totals			966379					453437
Proposed Lots								
10	6	7026	110	Corner	Corner	110	2031	
11	6	6262	65	Perpendicular	Rectangular	65	2404	

Columbia Forest Resubdivision

Columbia Forest Overlap Table								
Lots Excluded from Staff's Neighborhood								
Lot	Block	Lot Size	Frontage	Alignment	Shape	Width	Lot Area	
1	5	10	7230	60	Perpendicular	Radial	66	2998
2	7	10	7198	60	Perpendicular	Radial	64	2994
3	8	10	7092	55	Perpendicular	Radial	59	3068
4	9	10	8282	55	Perpendicular	Radial	64	3734
5	10	10	8341	60	Perpendicular	Radial	68	3709
6	12	10	8489	60	Perpendicular	Radial	69	3851
7	13	10	8610	60	Perpendicular	Radial	69	3897
8	14	10	9146	60	Perpendicular	Rectangular	69	4354
9	18	10	7925	60	Perpendicular	Rectangular	64	3559
10	19	10	6255	79	Perpendicular	Radial	70	2342
11	20	10	7075	80	Perpendicular	Radial	70	3012
12	21	10	6943	80	Perpendicular	Radial	71	2922
13	22	10	6758	64	Perpendicular	Rectangular	64	2766
14	23	10	6000	60	Perpendicular	Rectangular	60	2309
15	24	10	6000	60	Perpendicular	Rectangular	60	2309
16	25	10	6000	60	Perpendicular	Rectangular	60	2309
17	26	10	6423	69	Perpendicular	Rectangular	67	2532
18	28	10	7331	80	Perpendicular	Radial	73	3174
19	6	11	7555	131	Perpendicular	Radial	103	3135
20	7	11	7217	65	Perpendicular	Radial	62	3096
21	8	11	6732	88	Perpendicular	Radial	75	2729
22	9	11	6773	78	Perpendicular	Radial	68	2795
23	10	11	7214	80	Perpendicular	Radial	75	2827
Proposed Lots								
10	6	7026	110	Corner	Corner	110	2031	
11	6	6262	65	Perpendicular	Rectangular	65	2404	