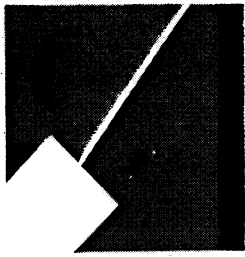


Item #12

M-NCPPC



MONTGOMERY COUNTY DEPARTMENT OF PARK AND PLANNING

THE MARYLAND-NATIONAL CAPITAL
PARK AND PLANNING COMMISSION

8787 Georgia Avenue
Silver Spring, Maryland 20910-3760

M E M O R A N D U M

DATE: September 24, 2004
TO: Montgomery County Planning Board
FROM: Catherine Conlon
Development Review Division
(301) 495-4542
SUBJECT: Informational Maps for Subdivision Items on the
Planning Board's Agenda for September 30, 2004.

Attached are copies of plan drawings for Item #06, #07, #08, #09, #10, #11 and #12. These subdivision items are scheduled for Planning Board consideration on September 30, 2004. The items are further identified as follows:

Agenda Item #06 - Preliminary Plan 1-04049
North Bethesda Town Center

Agenda Item #07 - Preliminary Plan 1-01031E
Addition to Cabin John Park

Agenda Item #08 - Preliminary Plan 1-01067E
East Hampshire Center

Agenda Item #09 - Preliminary Plan 1-04102
Garrett Park

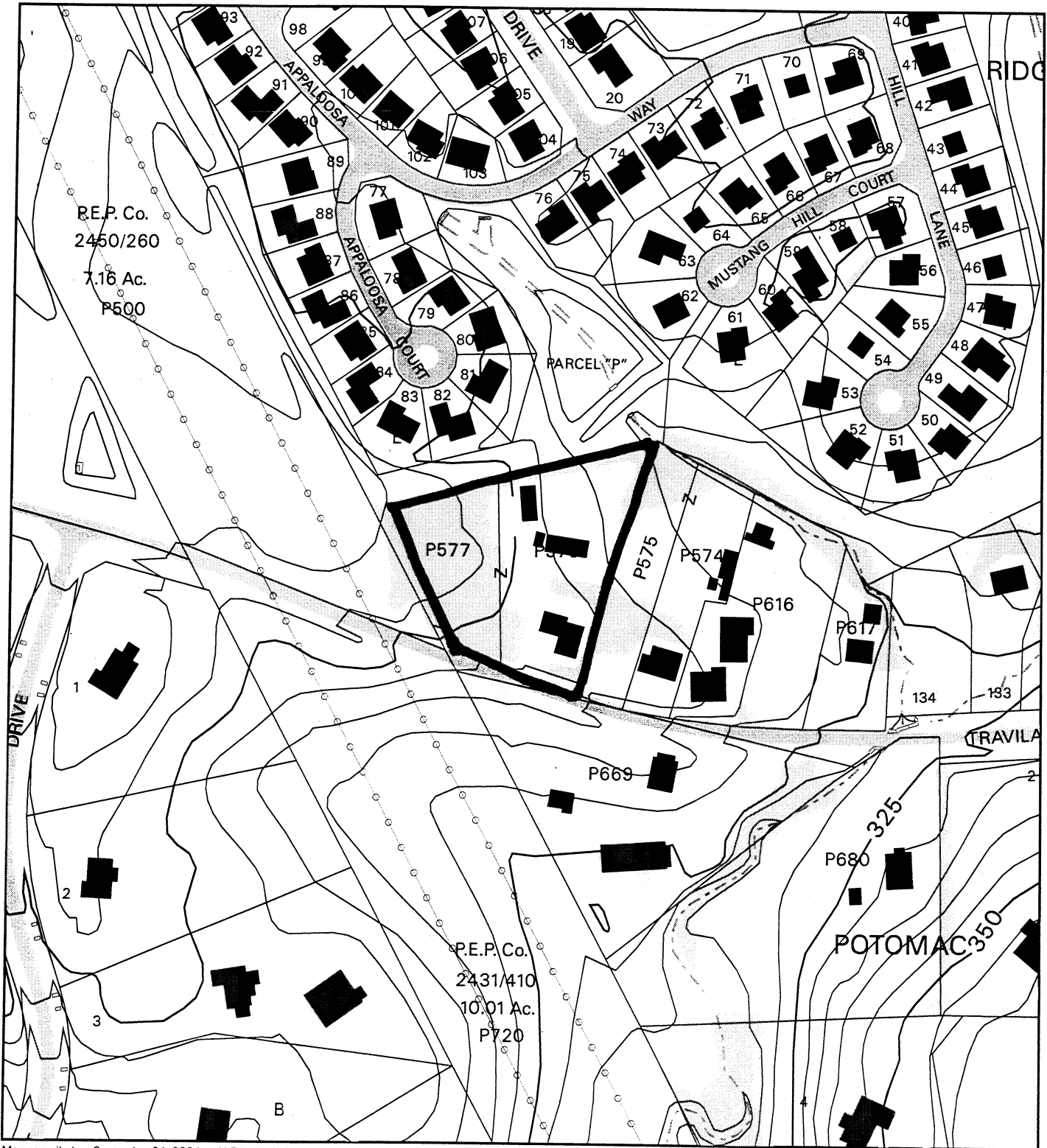
Agenda Item #10 - Pre-Preliminary Plan 7-04062
Tapestry

Agenda Item #11 - Preliminary Plan 1-00065E
Panagos Tract

Agenda Item #12 - Preliminary Plan 1-04081
Frye Estates

Attachment

FRYE ESTATES (1-04081)



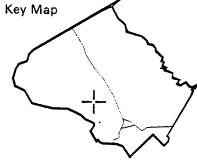
Map compiled on September 24, 2004 at 11:54 AM | Site located on base sheet no - 218NW12

NOTICE

The planimetric, property, and topographic information shown on this map is based on copyrighted Map Products from the Montgomery County Department of Park and Planning of the Maryland-National Capital Park and Planning Commission, and may not be copied or reproduced without written permission from M-NCPPC.

Property lines are compiled by adjusting the property lines to topography created from aerial photography and should not be interpreted as actual field surveys. Planimetric features were compiled from 1:14400 scale aerial photography using stereo photogrammetric methods.

This map is created from a variety of data sources, and may not reflect the most current conditions in any one location and may not be completely accurate or up to date. All map features are approximately within five feet of their true location. This map may not be the same as a map of the same area plotted at an earlier time as the data is continuously updated. Use of this map, other than for general planning purposes is not recommended. - Copyright 1998

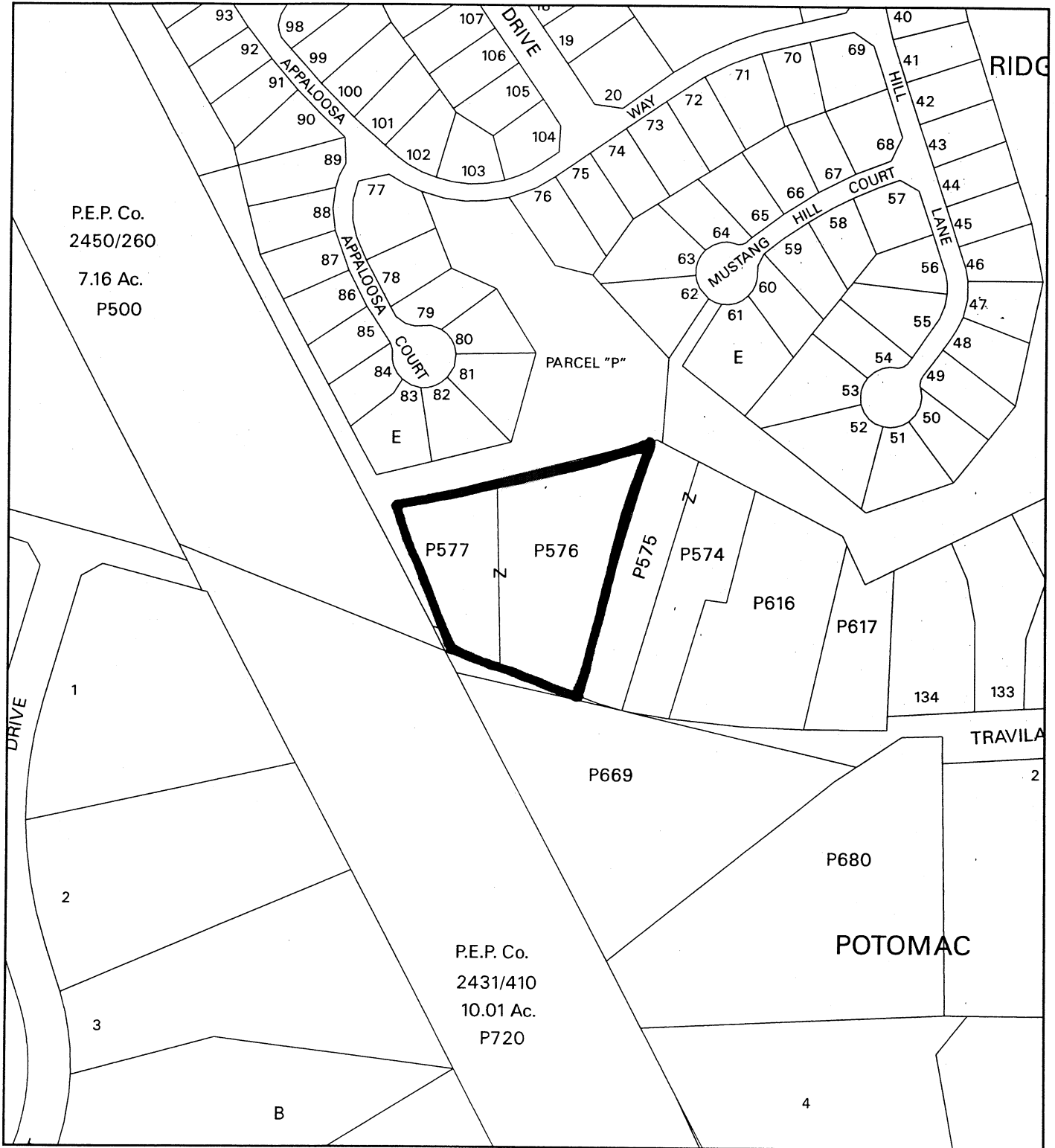


Research & Technology Center

0 200

1 inch = 200 feet
1 : 2400

FRYE ESTATES (1-04081)



Map compiled on September 24, 2004 at 11:23 AM | Site located on base sheet no - 218NW12

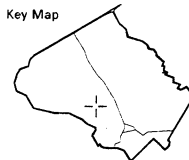
NOTICE

The planimetric, property, and topographic information shown on this map is based on copyrighted Map Products from the Montgomery County Department of Park and Planning of the Maryland -National Capital Park and Planning Commission, and may not be copied or reproduced without written permission from M-NCPPC.

Property lines are compiled by adjusting the property lines to topography created from aerial photography and should not be interpreted as actual field surveys. Planimetric features were compiled from 1:14400 scale aerial photography using stereo photogrammetric methods.

This map is created from a variety of data sources, and may not reflect the most current conditions in any one location and may not be completely accurate or up to date. All map features are approximately within five feet of their true location. This map may not be the same as a map of the same area plotted at an earlier time as the data is continuously updated. Use of this map, other than for general planning purposes is not recommended. - Copyright 1998

Key Map



Research & Technology Center



1 inch = 200 feet
1 : 2400

