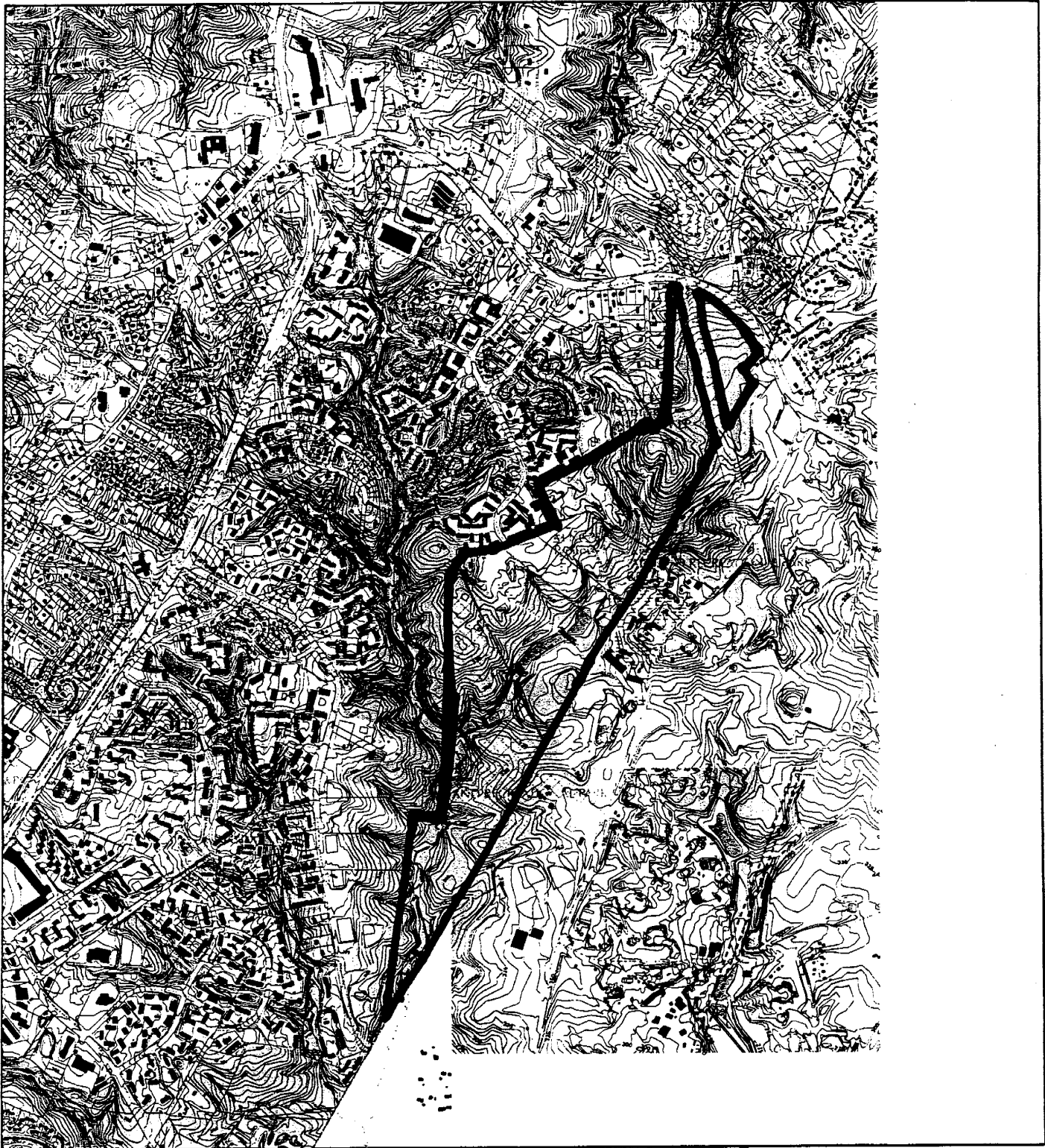


# FAIRLAND GOLF COMMUNITY (1-05020) (8-05006)



Map compiled on August 23, 2004 at 4:07 PM | Site located on base sheet no - 219NE05

### NOTICE

The planimetric, property, and topographic information shown on this map is based on copyrighted Map Products from the Montgomery County Department of Park and Planning of the Maryland-National Capital Park and Planning Commission, and may not be copied or reproduced without written permission from M-NCPPC.

Property lines are compiled by adjusting the property lines to topography created from aerial photography and should not be interpreted as actual field surveys. Planimetric features were compiled from 1:14400 scale aerial photography using stereo photogrammetric methods.

This map is created from a variety of data sources, and may not reflect the most current conditions in any one location and may not be completely accurate or up to date. All map features are approximately within five feet of their true location. This map may not be the same as a map of the same area plotted at an earlier time as the data is continuously updated. Use of this map, other than for general planning purposes is not recommended. - Copyright 1998



Research & Technology Center

0 2000

1 inch = 2000 feet  
1 : 24000



# FAIRLAND GOLF COMMUNITY (1-05020) (8-05006)



Map compiled on August 23, 2004 at 4:04 PM | Site located on base sheet no - 219NE05

## NOTICE

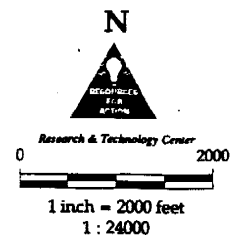
The planimetric, property, and topographic information shown on this map is based on copyrighted Map Products from the Montgomery County Department of Park and Planning of the Maryland-National Capital Park and Planning Commission, and may not be copied or reproduced without written permission from M-NCPPC.

Property lines are compiled by adjusting the property lines to topography created from aerial photography and should not be interpreted as actual field surveys. Planimetric features were compiled from 1:14400 scale aerial photography, using stereo photogrammetric methods.

This map is created from a variety of data sources, and may not reflect the most current conditions in any one location and may not be completely accurate or up to date. All map features are approximately within five feet of their true location. This map may not be the same as a map of the same area plotted at an earlier time as the data is continuously updated. Use of this map, other than for general planning purposes is not recommended. - Copyright 1998

**M-NCPPC**  
**MONTGOMERY COUNTY DEPARTMENT OF PARK AND PLANNING**  
THE MARYLAND-NATIONAL CAPITAL PARK AND PLANNING COMMISSION  
8787 Georgia Avenue - Silver Spring, Maryland 20910-3760

Key Map



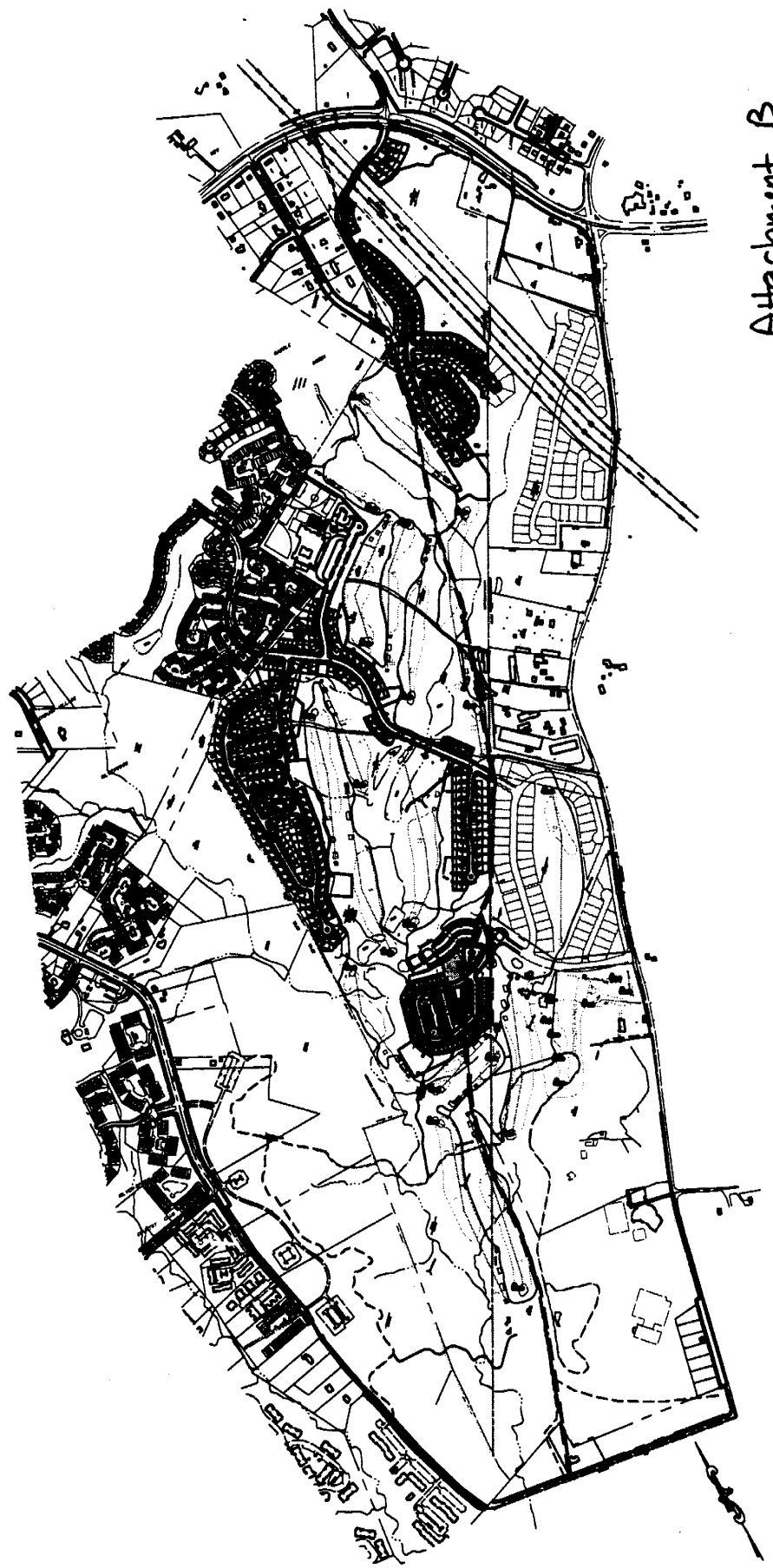
REVISIONS			
NO.	DESCRIPTION	BY	DATE

CERTIFICATE OF REGISTERED SURVEYOR:  
 I HEREBY CERTIFY THAT THE BOUNDARY LINE DATA INDICATED  
 HEREON IS TRUE AND CORRECT.  
 DATE: 10/12/2010  
 SURVEYOR: Robert A. Dewberry  
 PROFESSIONAL LAND SURVEYOR  
 REGISTRATIONAL NO. 0075

APPLICANT:  
 FAIRLAND GOLF AND COUNTRY CLUB  
 11200 FAIRLAND DR. #100  
 CHARLOTTE, NC 28211-1100  
 CONTACT: BOB DEWBERRY  
 PHONE: 704.773.1100

# FAIRLAND GOLF COMMUNITY

## COMPOSITE PRELIMINARY PLAN



Attachment B