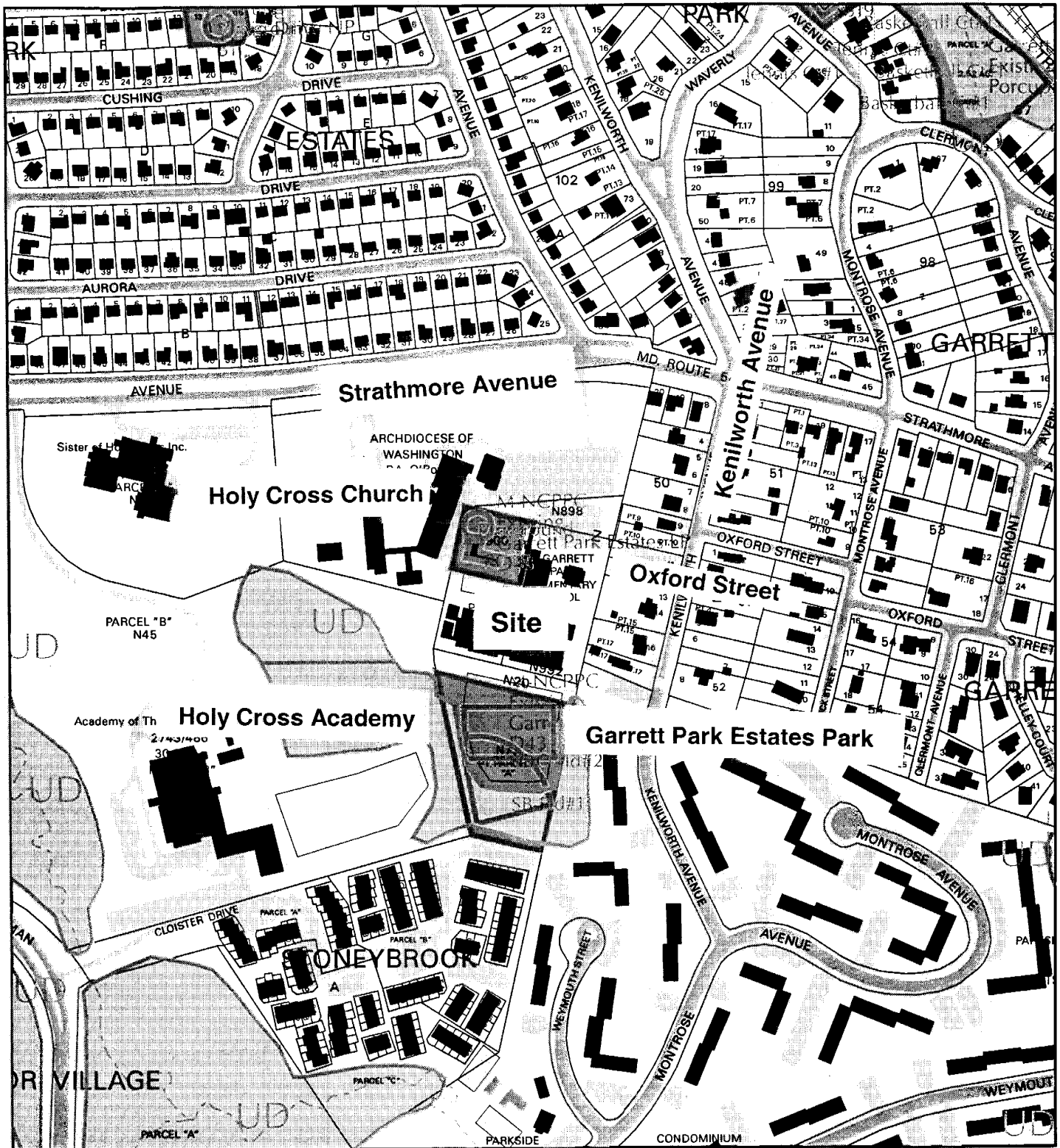


GARRETT PARK ELEMENTARY SCHOOL



Map compiled on March 10, 2005 at 2:55 PM | Site located on base sheet no - 214NW05

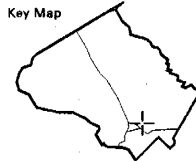
NOTICE

The planimetric, property, and topographic information shown on this map is based on copyrighted Map Products from the Montgomery County Department of Park and Planning of the Maryland-National Capital Park and Planning Commission, and may not be copied or reproduced without written permission from M-NCPPC.

Property lines are compiled by adjusting the property lines to topography created from aerial photography and should not be interpreted as actual field surveys. Planimetric features were compiled from 1:14400 scale aerial photography using stereo photogrammetric methods.

This map is created from a variety of data sources, and may not reflect the most current conditions in any one location and may not be completely accurate or up to date. All map features are approximately within five feet of their true location. This map may not be the same as a map of the same area plotted at an earlier time as the data is continuously updated. Use of this map, other than for general planning purposes is not recommended. - Copyright 1998

Key Map



N



Research & Technology Center



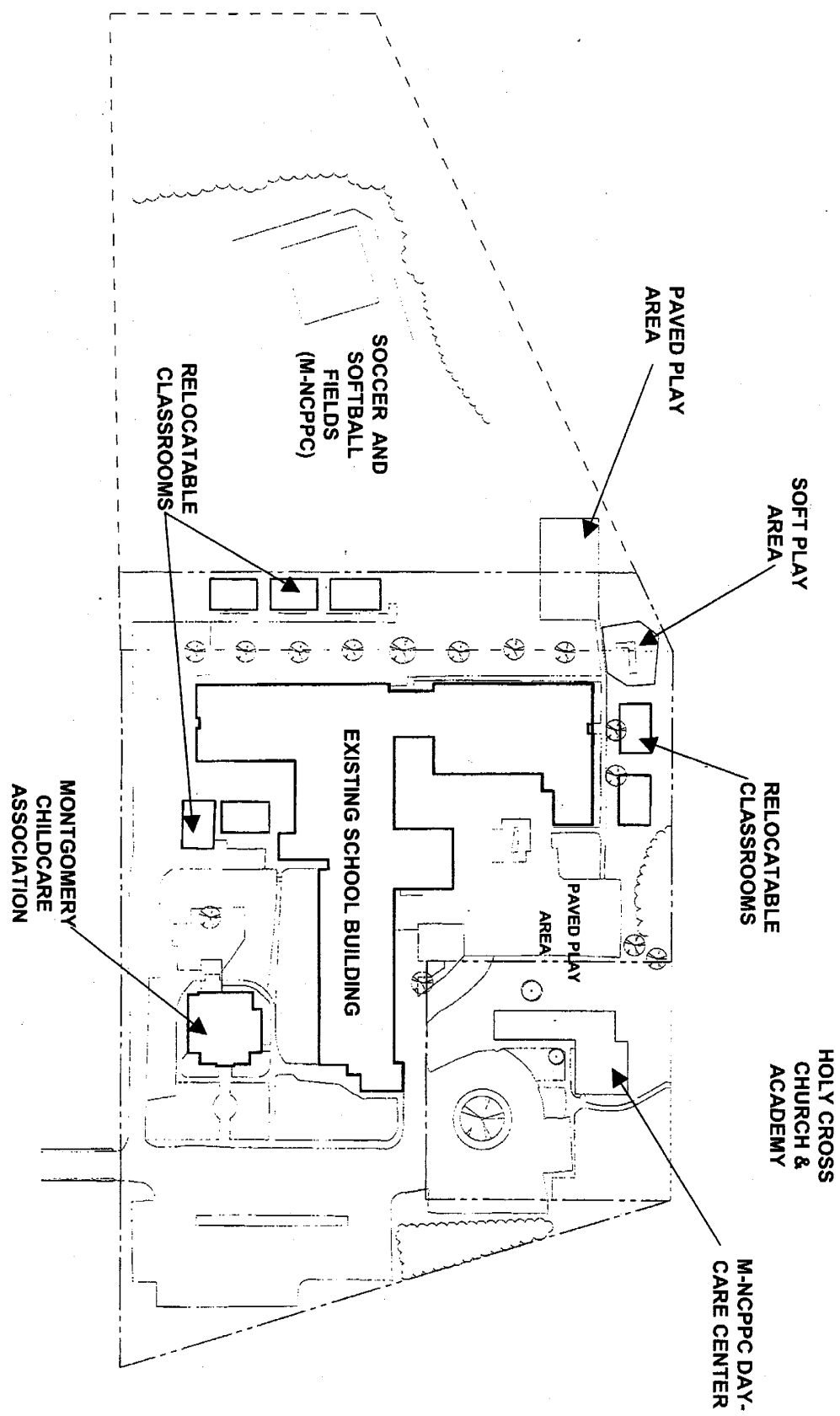
1 inch = 400 feet
1 : 4800

MONTGOMERY COUNTY DEPARTMENT OF PARK AND PLANNING
THE MARYLAND-NATIONAL CAPITAL PARK AND PLANNING COMMISSION
8787 Georgia Avenue - Silver Spring, Maryland 20910-3750

9

Garrett Park Elementary School Addition

Existing Site Plan



10

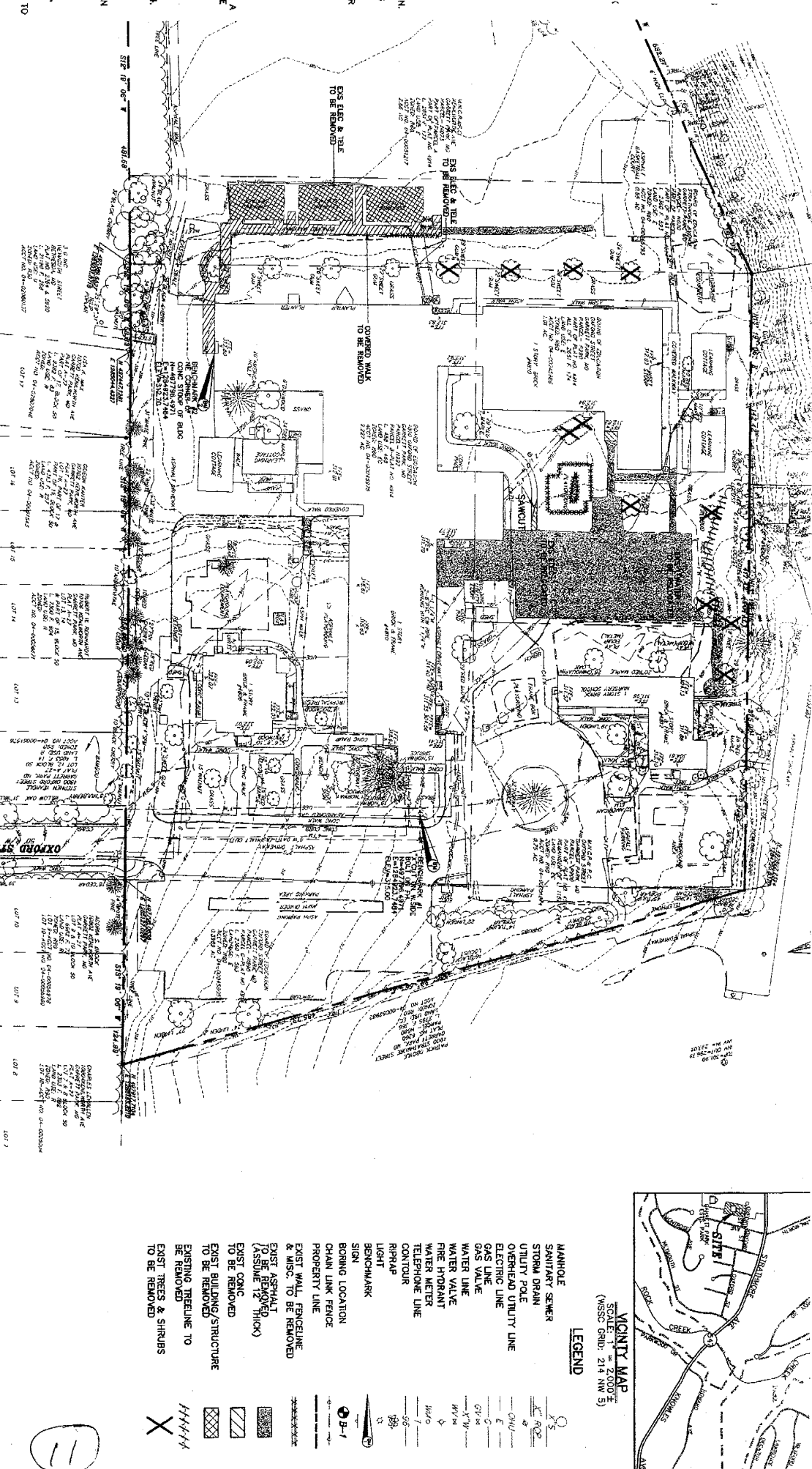


Gauthier, Alvarado & Associates

C. Existing Conditions and Demolition Plan

NO. 1 1 R

WAS R 2004.
 DES BY
 REACTION
 ACTION
 TYPICAL
 SS.
 O WAY TO
 BRARY ALL
 AND TO
 AND WITH
 COMMENCING
 AND ALL
 PORTIONS
 SITE TO
 ON UNDER
 MITTING
 TO
 FULL AND
 N 2
 THE
 ALL
 FROM
 BIDS
 NTS.
 R TO
 R TO



TRAVERSE INFORMATION			
NO.	NORTHING	EASTING	ELEVATION
50	4986077.8470	1285135.2590	324.18
51	4978483.3570	1284992.3260	314.22
52	497761.9726	128510.7939	321.60
53	497576.8762	1285035.6149	316.07
54	497337.7199	1284982.4999	308.74
55	497350.0487	1284856.0353	313.29
56	497626.1657	1284712.0988	310.23
57	497568.0349	1284683.5740	312.08
58	497568.0349	1284683.5740	312.08
59	497848.9235	1284868.0018	311.61
60	497784.7092	1284675.1532	307.35
61	497784.7092	1284675.1532	307.35
62	497744.7092	1285326.3566	328.85
63	497488.4364	1285044.5168	311.37
64	497404.0330	1284960.9926	311.23

MISS UTILITY
 CALL MISS UTILITY AT 1-800-287-7777, 48 HOURS PRIOR TO THE START OF WORK. THE EXCAVATOR MUST NOTIFY ALL PUBLIC UTILITY COMPANIES WITH UNDERGROUND FACILITIES IN THE AREA OF PROPOSED EXCAVATION AND HAVE THOSE FACILITIES LOCATED BY THE UTILITY COMPANIES PRIOR TO COMMENCING EXCAVATION. THE EXCAVATION IS NEAR COUNTY CODE COMPLIANCE WITH REQUIREMENTS OF CHARTER 50A OF THE MONTGOMERY COUNTY CODE.

ADTEK ENGINEERS, INC.
 CIVIL, STRUCTURAL & GEOTECHNICAL ENGINEER
 2835 MUDDY BRANCH ROAD
 GAITHERSBURG, MARYLAND 20878
 ATTN: RAY MARSHAWALL, P.E.
 TEL: (301) 548-7538 FAX: (301) 548-7539

OWNER/APPLICANT:
 MONTGOMERY COUNTY PUBLIC SCHOOL
 2835 MUDDY BRANCH ROAD
 GAITHERSBURG, MARYLAND 20878
 ATTN: RAY MARSHAWALL, P.E.
 TEL: (301) 548-7538 FAX: (301) 548-7539

GRAPHIC SCALE
 1" = 100'-0"
 (IN FEET)

