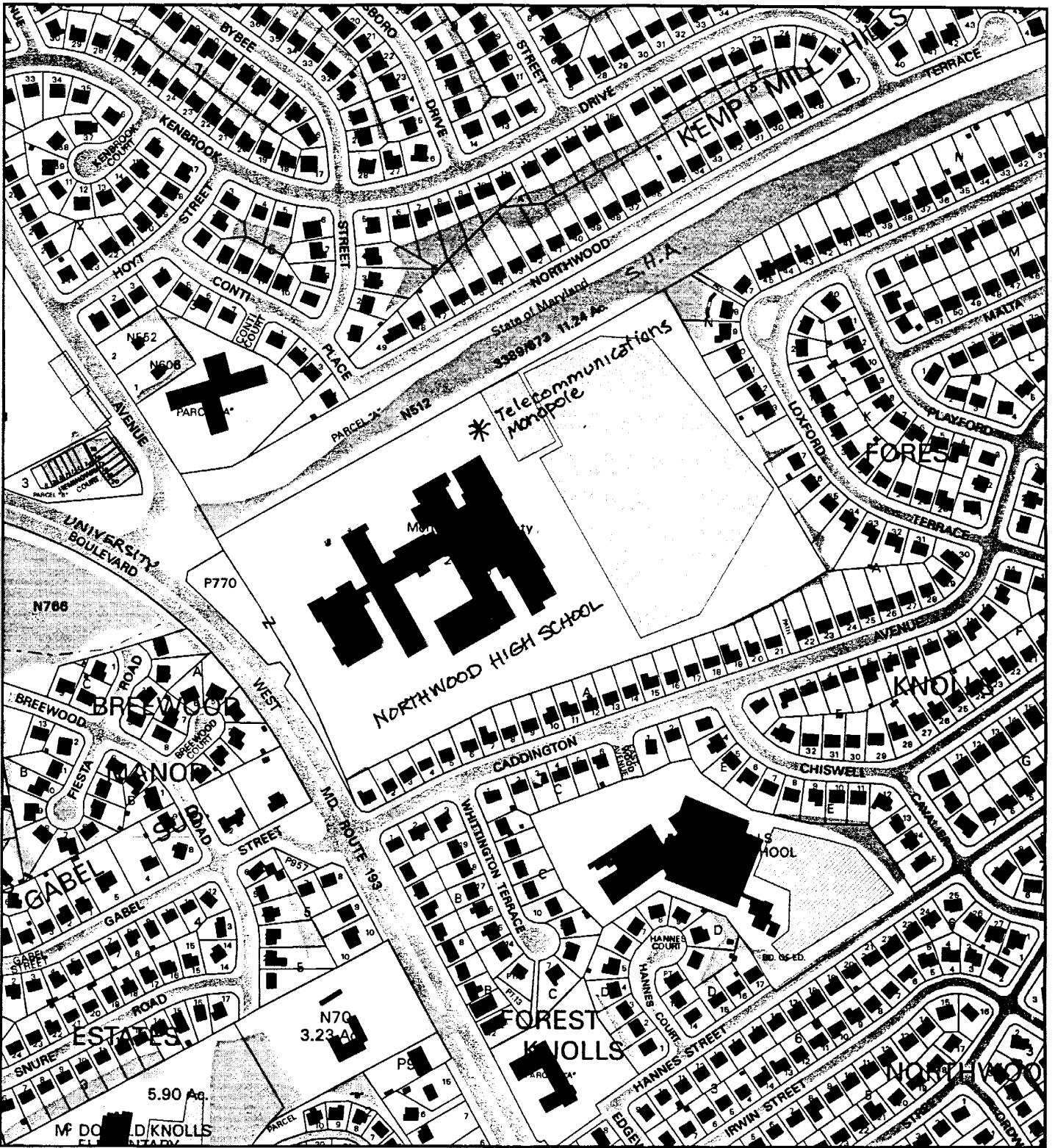


NORTHWOOD HIGH SCHOOL



Map compiled on April 06, 2005 at 3:22 PM | Site located on base sheet no - 214NW01

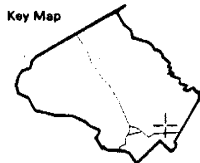
NOTICE

The planimetric, property, and topographic information shown on this map is based on copyrighted Map Products from the Montgomery County Department of Park and Planning of the Maryland-National Capital Park and Planning Commission, and may not be copied or reproduced without written permission from M-NCPPC.

Property lines are compiled by adjusting the property lines to topography created from aerial photography and should not be interpreted as actual field surveys. Planimetric features were compiled from 1:14400 scale aerial photography using stereo photogrammetric methods.

This map is created from a variety of data sources, and may not reflect the most current conditions in any one location and may not be completely accurate or up to date. All map features are approximately within five feet of their true location. This map may not be the same as a map of the same area plotted at an earlier time as the data is continuously updated. Use of this map, other than for general planning purposes is not recommended. - Copyright 1998

Key Map



Research & Technology Center



1 inch = 400 feet
1 : 4800

PROPOSED LIGHTPOLE SETBACK FROM PROPERTY LINES

	PROVIDED
FRONT YARD SETBACK	940'±
SIDE YARD (L) SETBACK	110'±
SIDE YARD (R) SETBACK	730'±
REAR YARD SETBACK	821'±

PROPOSED LIGHTPOLE SETBACK FROM SCHOOL BUILDING

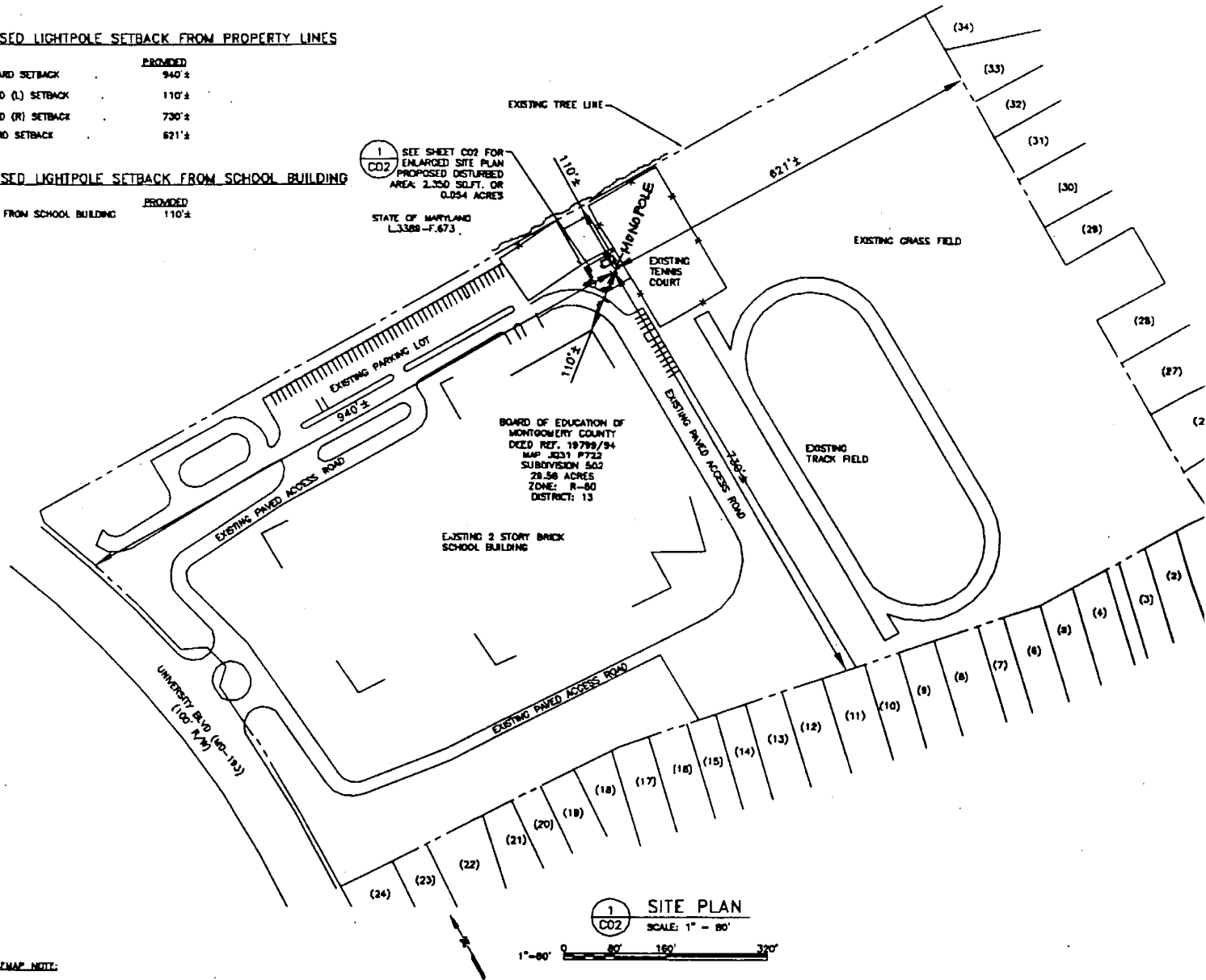
	PROVIDED
SETBACK FROM SCHOOL BUILDING	110'±

1 SEE SHEET CO2 FOR ENLARGED SITE PLAN PROPOSED DISTURBED AREA: 2,300 SQ.FT. OR 0.054 ACRES

STATE OF MARYLAND L3388-F.673

BOARD OF EDUCATION OF MONTGOMERY COUNTY
DCED REF: 19799/94
MAP J031 P722
SUBDIVISION 502
28.56 ACRES
ZONE: R-80
DISTRICT: 13

EXISTING 2 STORY BRICK SCHOOL BUILDING

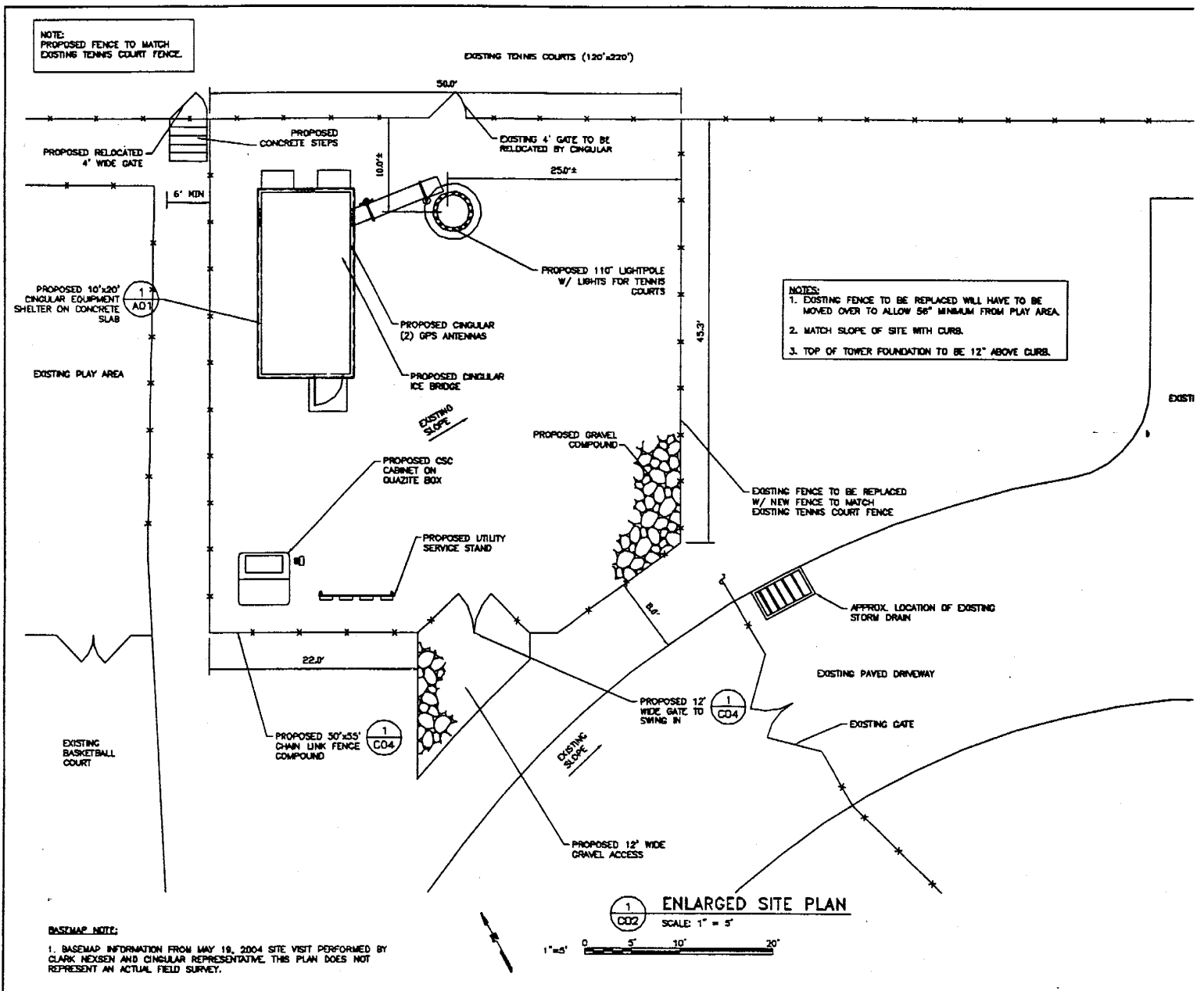


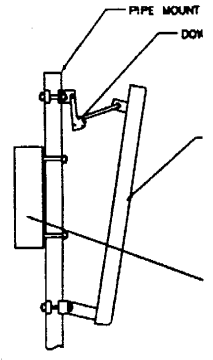
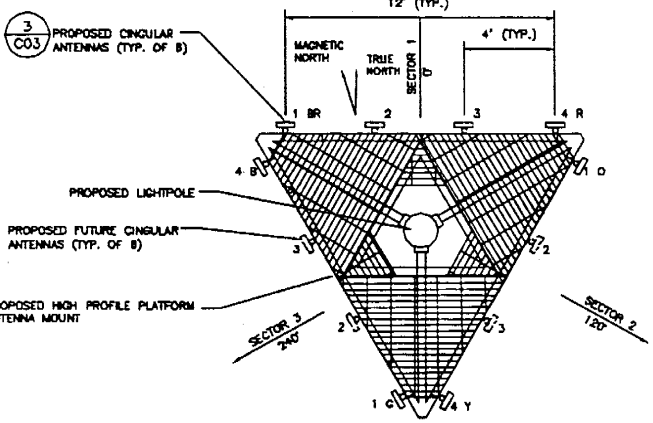
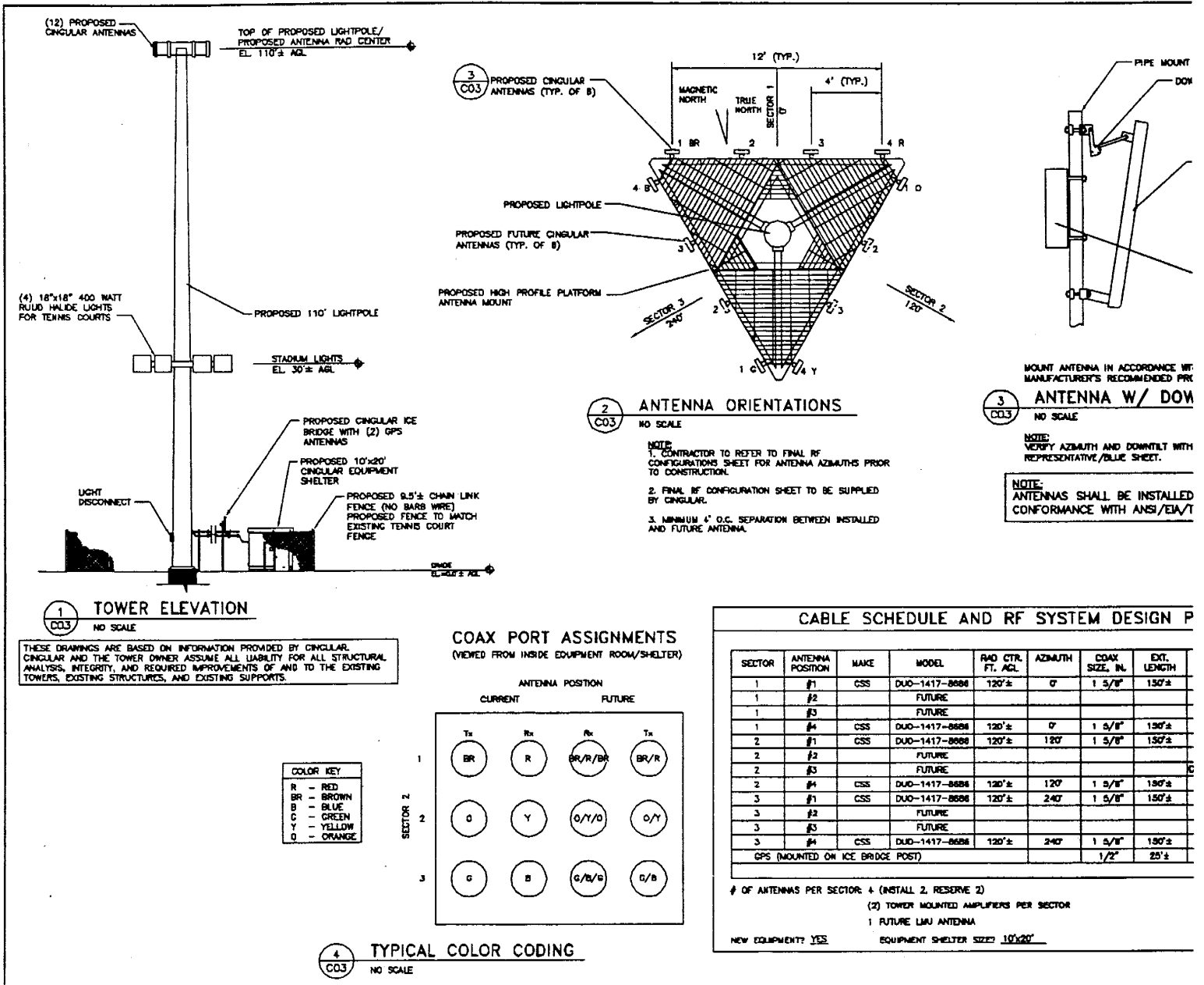
1 SITE PLAN
CO2 SCALE: 1" = 80'



BASMAP NOTE:

1. SITE PLAN INFORMATION WAS OBTAINED FROM DRAWINGS BY FANNING/HONEY ASSOCIATES, INC., DATED MAY 10, 2004 PROVIDED BY CINGULAR. THIS PLAN DOES NOT REPRESENT AN ACTUAL FIELD SURVEY.





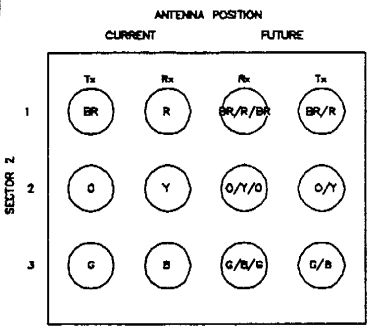
2 ANTENNA ORIENTATIONS
 NO SCALE
 NOTE:
 1. CONTRACTOR TO REFER TO FINAL RF CONFIGURATIONS SHEET FOR ANTENNA AZIMUTHS PRIOR TO CONSTRUCTION.
 2. FINAL RF CONFIGURATION SHEET TO BE SUPPLIED BY CINGULAR.
 3. MINIMUM 4' O.C. SEPARATION BETWEEN INSTALLED AND FUTURE ANTENNA.

3 ANTENNA W/ DOM
 NO SCALE
 NOTE:
 VERIFY AZIMUTH AND DOWNTILT WITH REPRESENTATIVE/BLUE SHEET.
 NOTE:
 ANTENNAS SHALL BE INSTALLED CONFORMANCE WITH ANSI/EIA/T

1 TOWER ELEVATION
 NO SCALE

THESE DRAWINGS ARE BASED ON INFORMATION PROVIDED BY CINGULAR. CINGULAR AND THE TOWER OWNER ASSUME ALL LIABILITY FOR ALL STRUCTURAL ANALYSIS, INTEGRITY, AND REQUIRED IMPROVEMENTS OF AND TO THE EXISTING TOWERS, EXISTING STRUCTURES, AND EXISTING SUPPORTS.

COAX PORT ASSIGNMENTS
 (VIEWED FROM INSIDE EQUIPMENT ROOM/SHELTER)



COLOR KEY

R	- RED
BR	- BROWN
B	- BLUE
C	- GREEN
Y	- YELLOW
O	- ORANGE

4 TYPICAL COLOR CODING
 NO SCALE

CABLE SCHEDULE AND RF SYSTEM DESIGN P

SECTOR	ANTENNA POSITION	MAKE	MODEL	RAO CTR. FT. AGL.	AZIMUTH	COAX SIZE, INL.	EXT. LENGTH	
1	#1	CSS	DUD-1417-8688	120'±	0°	1 5/8"	150'±	
1	#2		FUTURE					
1	#3		FUTURE					
1	#4	CSS	DUD-1417-8688	120'±	0°	1 5/8"	150'±	
2	#1	CSS	DUD-1417-8688	120'±	120°	1 5/8"	150'±	
2	#2		FUTURE					
2	#3		FUTURE					
2	#4	CSS	DUD-1417-8688	120'±	120°	1 5/8"	150'±	
3	#1	CSS	DUD-1417-8688	120'±	240°	1 5/8"	150'±	
3	#2		FUTURE					
3	#3		FUTURE					
3	#4	CSS	DUD-1417-8688	120'±	240°	1 5/8"	150'±	
GPS (MOUNTED ON ICE BRIDGE POST)							1/2"	25'±

OF ANTENNAS PER SECTOR: 4 (INSTALL 2, RESERVE 2)
 (2) TOWER MOUNTED AMPLIFIERS PER SECTOR
 1 FUTURE LMA ANTENNA
 NEW EQUIPMENT? YES EQUIPMENT SHELTER SIZE: 10'x20'