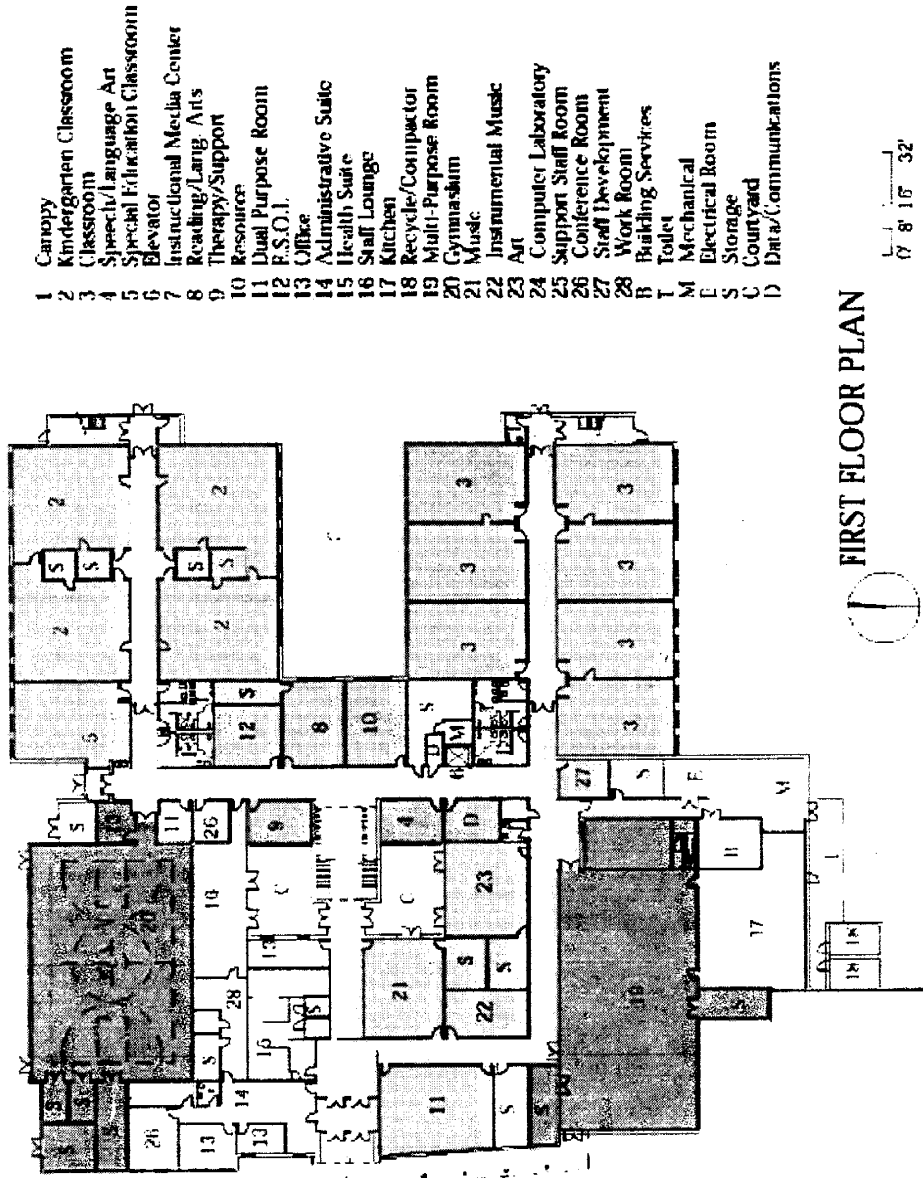
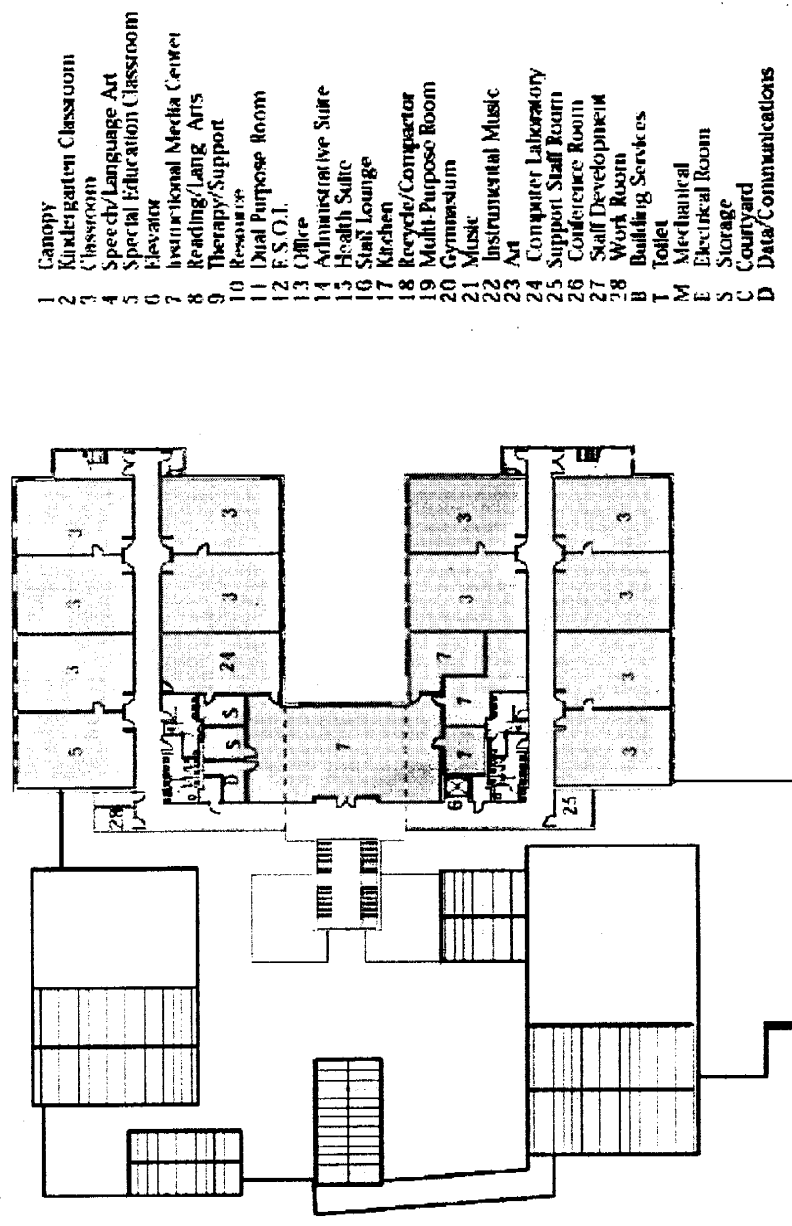


Proposed Floor Plan



FIRST FLOOR PLAN

Seven Locks Elementary School-Replacement
 WALTON • MADDEN • COOPER • ROBINSON • FONESSE, INC



- 1 Canopy
- 2 Kindergarten Classroom
- 3 Classroom
- 4 Speech/Language Art
- 5 Special Education Classroom
- 6 Elevator
- 7 Instructional Media Center
- 8 Reading/Lang Arts
- 9 Therapy/Support
- 10 Resource
- 11 Dual Purpose Room
- 12 F.S.O.I.
- 13 Office
- 14 Administrative Suite
- 15 Health Suite
- 16 Staff Lounge
- 17 Kitchen
- 18 Recycle/Comptor
- 19 Multi-Purpose Room
- 20 Gymnasium
- 21 Music
- 22 Instrumental Music
- 23 Art
- 24 Computer Laboratory
- 25 Support Staff Room
- 26 Conference Room
- 27 Staff Development
- 28 Work Room
- B Building Services
- T Toilet
- M Mechanical
- E Electrical Room
- S Storage
- C Courtyard
- D Data/Communications

SECOND FLOOR PLAN

0' 8' 10' 32'

**MCPS/Kendale Neighborhood Joint Traffic Plan
for Relocated Seven Locks Elementary School**

Revision #6, 4/25/05

Item# Description

**Study Support
MCPS¹ KNC²**

MCPS Action

KNC Action

**Approval³
sought from**

Remarks

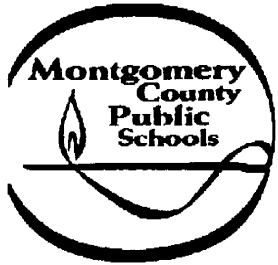
Item#	Description	Yes	Yes	Initiate, design and install	no objections (see remarks)	DPS	Remarks
1	Widen Kendale Rd between Kentsdale Rd and Crider Brook Way	Yes	Yes	Initiate, design and install	no objections	DPS	BMI-SG suggests 22' width. KNC opposed to anything wider.
2	Centerline and edge lines, same segment	Yes	n/a	Initiate, design and install	no objections	DPS/DPWT	KNC prefers no striping.
3	Directional Driveway - traffic at automobile entrance geometrically directed to the north	n/a	Yes	Initiate, design and install	Support	DPS	
4	No Left Turn Signs, school driveways at Kendale Rd	n/a	Yes	Initiate, install	Support	none required	supplemental to the usual STOP signs
5	No Right Turn Signs, NB Kendale Rd at school driveways	n/a	Yes	no objections	Initiate	DPWT	MCPS will initiate geometric restrictions at the automobile entrance to prohibit right turns from Kendale Road if DPWT approves no right turns from Northbound traffic onto the school site at all times.
6	Prohibited Entry of Kendale Road at Bradley Blvd, 7-9 AM, 2-4 PM weekdays for all vehicles including buses.	Yes	Yes	Support	Initiate	DPWT, SHA	BMI/SG recommends extending evening prohibition to 7 PM.
7	Bus Routing	Yes	Yes	Initiate	Support	none required	MCPS to ensure that buses do not use Kendale Road south of Crider Brook with exception of one bus per peak period for pick up/drop off.
8	Kendale Road: No Stopping or Standing signs on entire school frontage	Yes	Yes	Initiate	Support	DPWT	
9	Kendale Road: parking restriction on all other frontages between Kentsdale and (opp.) south school property line	Yes	Yes	Support	Initiate	DPWT	
10	Crider Brook Way: parking restrictions	n/a	Yes	no objections	Initiate	DPWT	
11	All-way STOP signs at Kendale /Crider Brook and at Kendale/Farnsworth	n/a	Yes	no objections	Initiate	DPWT	
12	All-way STOP sign at Kentsdale/Kendale	n/a	Yes	no objections	Initiate	DPWT	
13	Additional traffic calming measures on Kendale Road	Yes	Yes	no objections	Initiate	DPWT	Speed humps were recommended in the traffic study as calming measures for Kendale Road.
14	Passive school zone signs	Yes	Yes	Initiate	Support	DPWT	KNC opposed to use of active (flashing) school zone signs on Kendale Road.

1 "Seven Locks Elementary School Replacement Traffic Analysis", by BMI-SG consultants, 12/18/2004

2 "Principles For Traffic Access and Flow", compiled by Joseph Cutro, P.E., 10/6/2004

3 Approvals by appropriate agencies are neither presumed nor assured.

17. MCPS Facility Advisory Committee Meeting Schedule & Notification Letter



DIVISION OF CONSTRUCTION

Festival Center, 283 Muddy Branch Rd, Gaithersburg, MD 20878 - (301) 548-7490 (301) 548-7274 Fax

September 30, 2004

«FirstName» «LastName»
«Address1»
Or Current Resident
«City»
«State» «PostalCode»

Dear «FirstName» «LastName»:

Subject:

Montgomery County Public Schools (MCPS) is planning a new Seven Locks Elementary School to be constructed on a 10.5 acre site owned by the Montgomery County Board of Education located at 9600 Kendale Road. This letter is to inform you of the schematic design phase meetings for this project. I would like to extend my invitation to you to participate in this process. While all are invited, the community is encouraged to send representatives from their respective streets, areas, and associates. The first meeting of the Facility Advisory Committee is October 20, 2004, at 7:00 p.m. All meetings will take place at the existing Seven Locks Elementary School located at 9500 Seven Locks Road. The following is a complete schedule for the work sessions and final community presentation meeting:

Work Session Meeting #1	Wednesday, October 20th, 2004	7:00 pm
Work Session Meeting #2	Thursday November 4th, 2004	3:30 pm
Work Session Meeting #3	Wednesday, November 17th, 2004	7:00 pm
Work Session Meeting #4	Thursday December 2nd, 2004	3:30 pm
Community Presentation Meeting #5	Thursday December 16th, 2004	7:00 pm
*Community Presentation Meeting #6	Thursday January, 6th, 2005	7:00 pm
*Community Presentation Meeting #7	Thursday February, 8th, 2005	7:00 pm

* Additional meetings scheduled for community participation.

Since the meeting dates and times may be revised, please confirm the meeting prior to your attendance. The meeting will include participants from school faculty, PTSA, community neighbors, the project architect, and staff from MCPS, Division of Construction. Everyone present will have the opportunity to hear about the design process, the project timetable, and plans for keeping the community informed. For the betterment of the community and school, please plan to attend.

Should you wish to participate, or have any questions, please contact me at 301.548.7542 or e.mail to james_r_tokar@mcpsmd.org

Respectfully,

James R. Tokar,
Project Manager
Division of Construction

JRT:jrt

Copy to: Mr. Song Mr. Shpur Mr. Lavorgna Ms. Karamikas Ms. Gordon Ms. Bice
Ms. Mikolajczyk Walton, Madden, Cooper, Robinson, Poness, Inc.