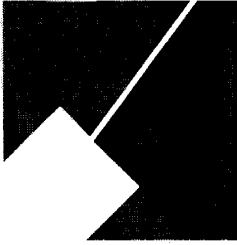


M-NCPPC



**MONTGOMERY COUNTY DEPARTMENT OF PARK AND PLANNING**

THE MARYLAND-NATIONAL CAPITAL  
PARK AND PLANNING COMMISSION

8787 Georgia Avenue  
Silver Spring, Maryland 20910-3760  
301-495-4500, [www.mncppc.org](http://www.mncppc.org)

M E M O R A N D U M

**DATE:** June 24, 2005

**TO:** Montgomery County Planning Board

**FROM:** Catherine Conlon  
Development Review Division  
(301) 495-4542

**SUBJECT:** Informational Maps for Subdivision Items on the  
Planning Board's Agenda for June 30, 2005.

-----

Attached are copies of plan drawings for item #06, #07, and #08. These subdivision items are scheduled for Planning Board consideration on June 30, 2005. The items are further identified as follows:

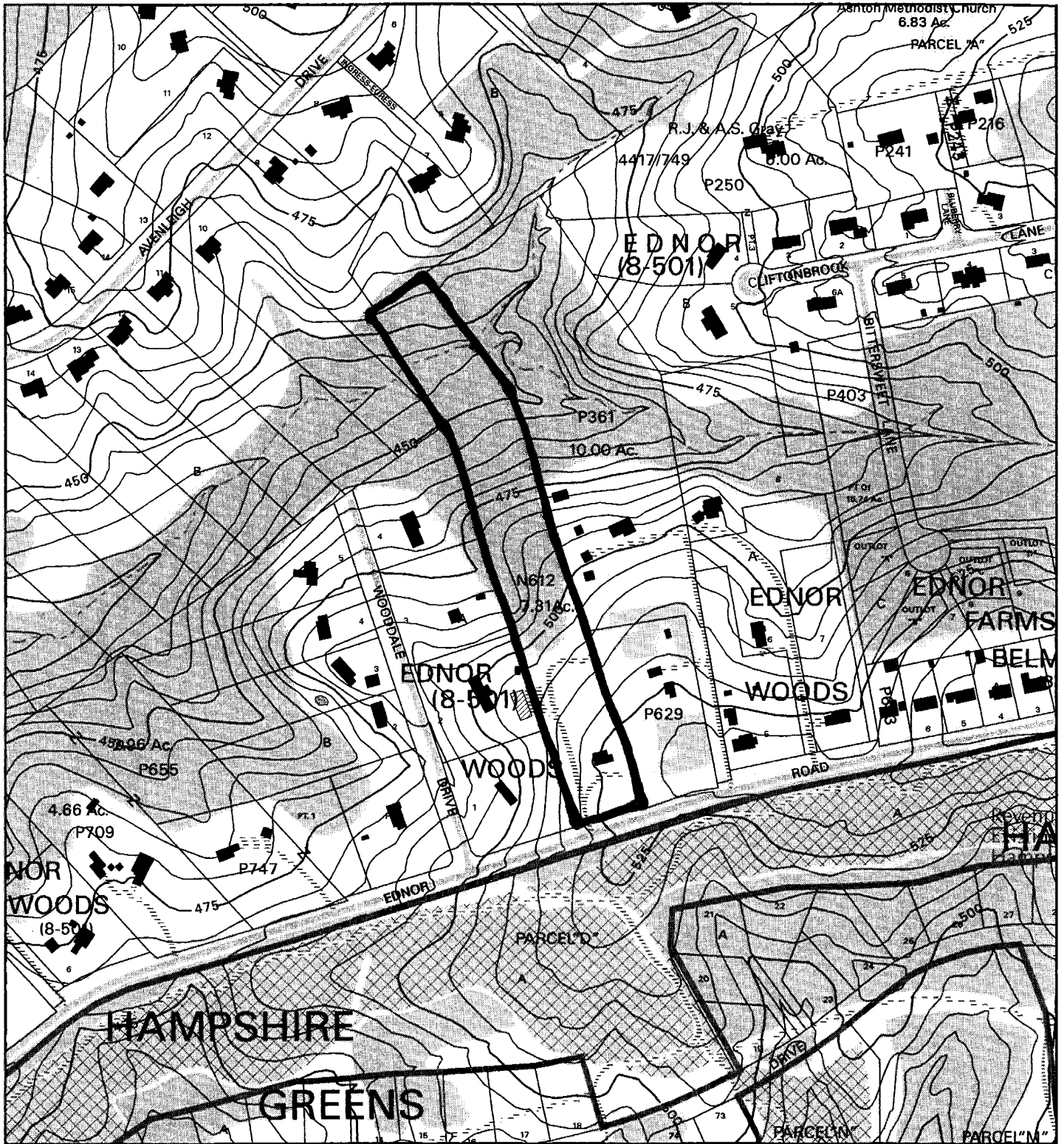
Agenda Item #06 - Preliminary Plan 1-05084  
1200 East West Highway

Agenda Item #07 - Preliminary Plan 1-05079  
Chestnut Ridge

Agenda Item #08 - Preliminary Plan 1-05065  
Drumsta Property

Attachment

# DRUMSTA PROPERTY (1-05065)



Map compiled on February 01, 2005 at 2:37 PM | Site located on base sheet no - 223NE01

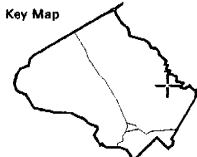
## NOTICE

The planimetric, property, and topographic information shown on this map is based on copyrighted Map Products from the Montgomery County Department of Park and Planning of the Maryland -National Capital Park and Planning Commission, and may not be copied or reproduced without written permission from M-NCPPC.

Property lines are compiled by adjusting the property lines to topography created from aerial photography and should not be interpreted as actual field surveys. Planimetric features were compiled from 1:14400 scale aerial photography using stereo photogrammetric methods.

This map is created from a variety of data sources, and may not reflect the most current conditions in any one location and may not be completely accurate or up to date. All map features are approximately within five feet of their true location. This map may not be the same as a map of the same area plotted at an earlier time as the data is continuously updated. Use of this map, other than for general planning purposes is not recommended. Copyright 1998

Key Map



N

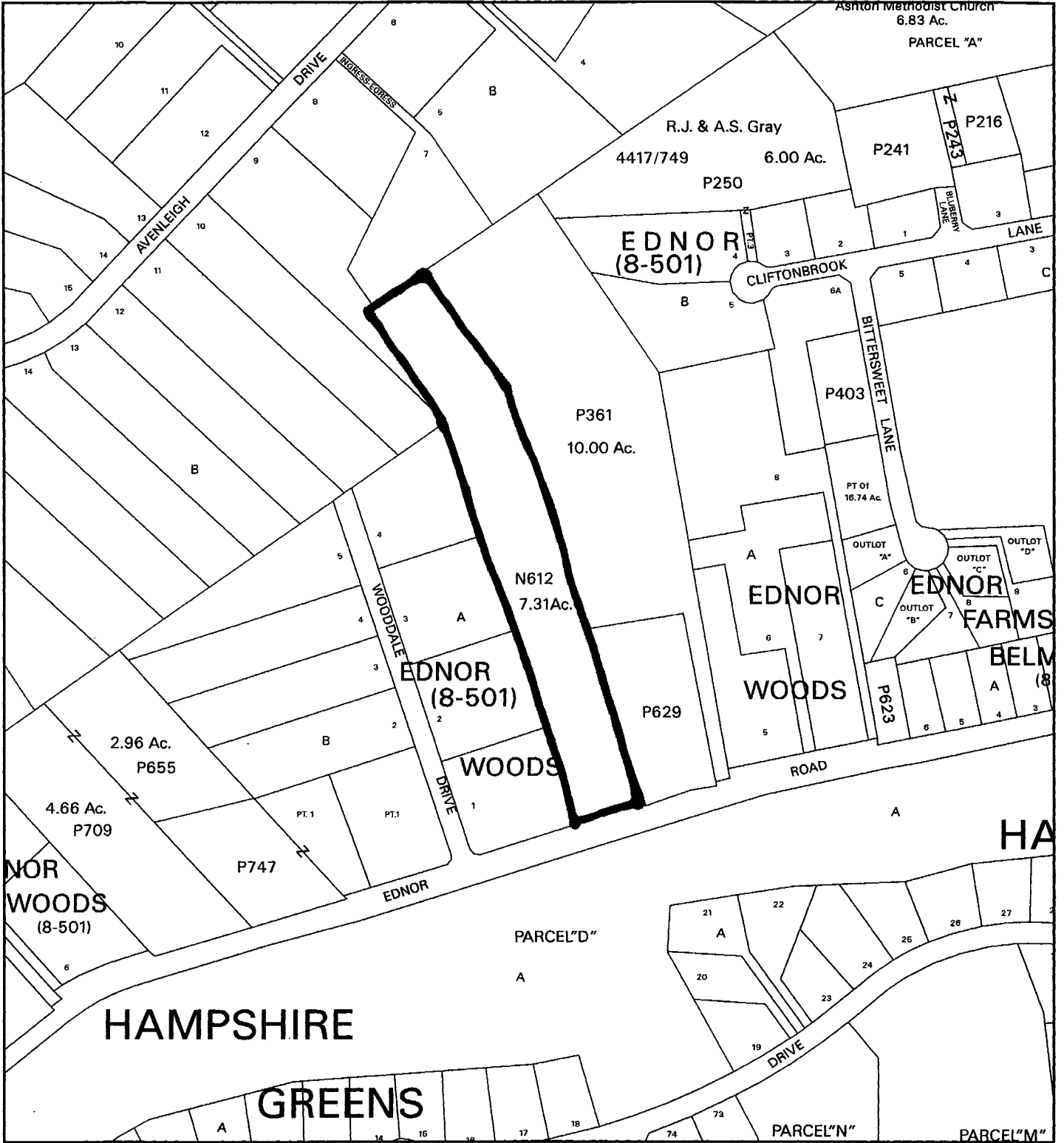


1 inch = 400 feet  
1 : 4800

**MONTGOMERY COUNTY DEPARTMENT OF PARK AND PLANNING**  
THE MARYLAND-NATIONAL CAPITAL PARK AND PLANNING COMMISSION  
8787 Georgia Avenue - Silver Spring, Maryland 20910-3760

M-NCPPC

# DRUMSTA PROPERTY (1-05065)



Map compiled on February 01, 2005 at 2:38 PM | Site located on base sheet no - 223NE01

## NOTICE

The planimetric, property, and topographic information shown on this map is based on copyrighted Map Products from the Montgomery County Department of Park and Planning of the Maryland-National Capital Park and Planning Commission, and may not be copied or reproduced without written permission from M-NCPPC.

Property lines are compiled by adjusting the property lines to topography created from aerial photography and should not be interpreted as actual field surveys. Planimetric features were compiled from 1:14400 scale aerial photography using stereo photogrammetric methods.

This map is created from a variety of data sources, and may not reflect the most current conditions in any one location and may not be completely accurate or up to date. All map features are approximately within five feet of their true location. This map may not be the same as a map of the same area plotted at an earlier time as the data is continuously updated. Use of this map, other than for general planning purposes is not recommended. - Copyright 1998

