

10° 31'W
(DECLINATION)
MAY 2001

PROPERTY MAP REF. NO.	OWNER	BUSINESS	ACRES
10A	Montgomery County	M-NCPPC	8.41
10B	Montgomery County	Montgomery County	1.5
11	Webb Tract LLC	Steve Minion, Site Manager	3.25

NOTE: MONTGOMERY COUNTY REVENUE AUTHORITY AND M-NCPPC ARE ENTERING INTO A MEMORANDUM OF AGREEMENT FOR THE PORTION OF PROPERTY WITHIN THE R2Z

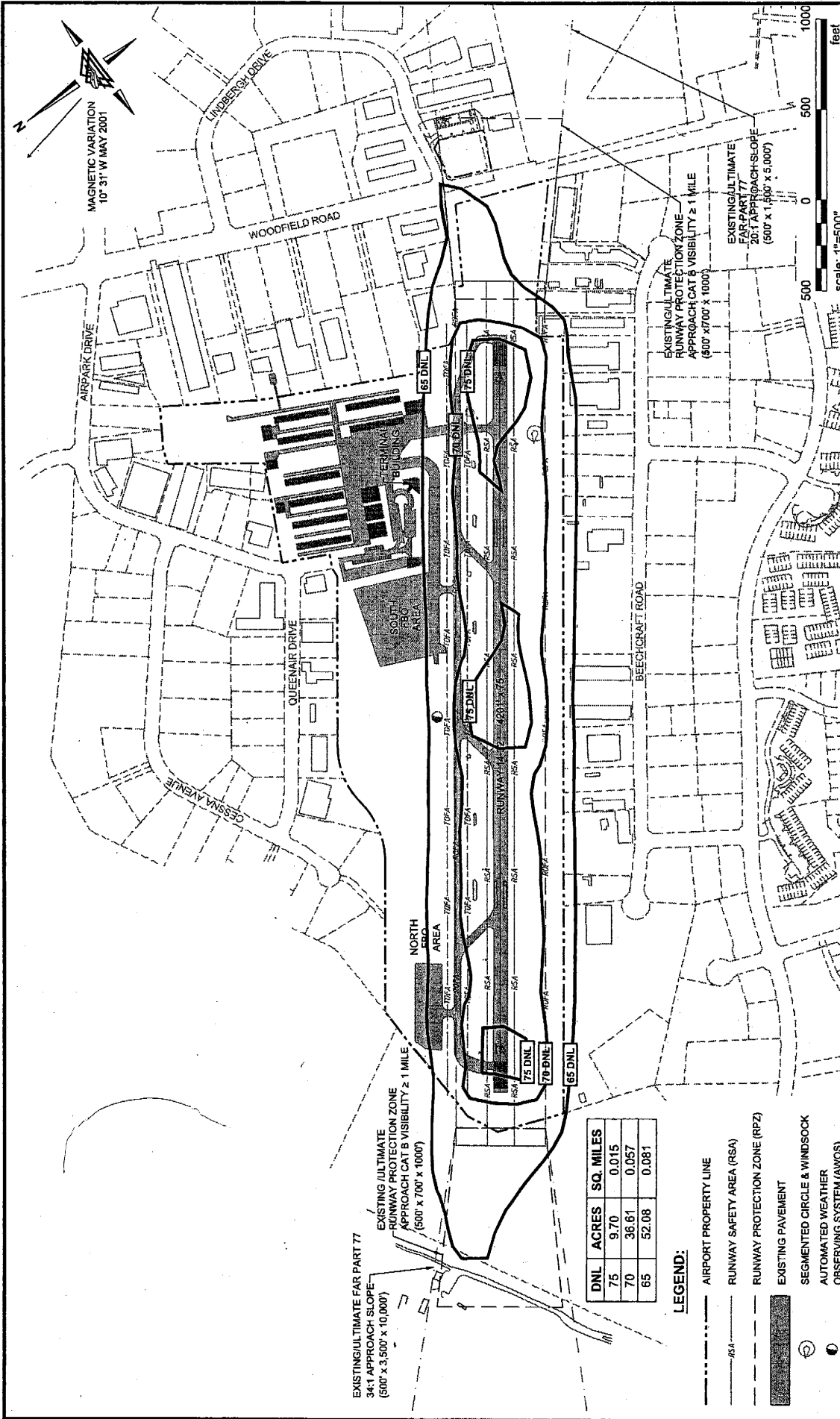
LEGEND

- PROPOSED MOA BETWEEN MCRA AND M-NCPPC
- PROPOSED PROPERTY INTEREST ACQUISITION
- EXISTING PROPERTY LINE
- PROPOSED PROPERTY LINE
- EXISTING RUNWAY OBJECT FREE AREA
- EXTENDED RUNWAY OBJECT FREE AREA



**AFFECTED PROPERTIES (RUNWAY 14 END)
MONTGOMERY COUNTY AIRPARK**

**EXHIBIT
4-4**



MAGNETIC VARIATION
10° 31' W MAY 2001



EXHIBIT
3-10

**EXISTING (2003) NOISE CONTOURS
MONTGOMERY COUNTY AIRPORT**

DATE: FEBRUARY, 2005

SCALE:

CHECKED BY:

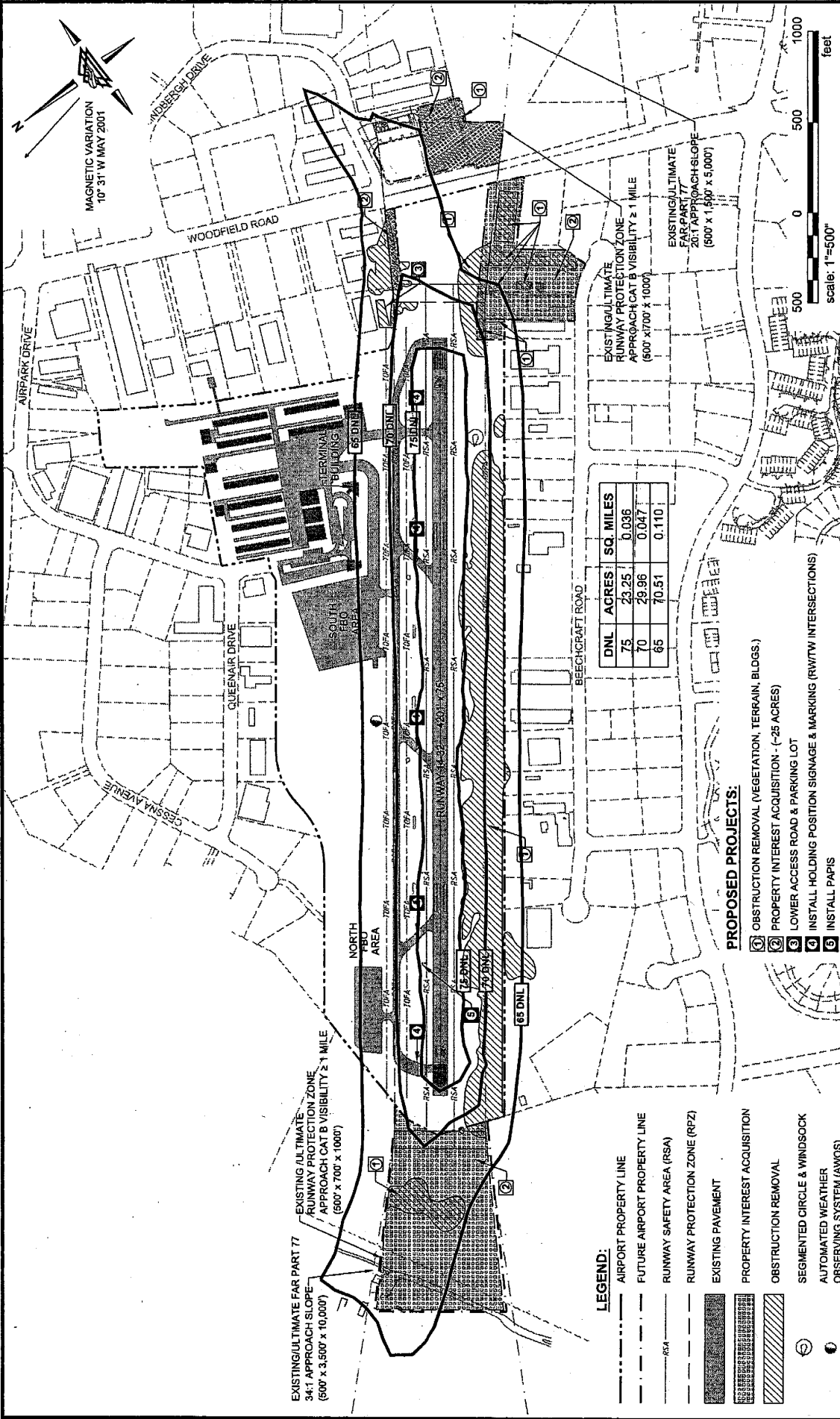
DRAWN BY:

DNL	ACRES	SQ. MILES
75	9.70	0.015
70	36.61	0.057
65	52.08	0.081

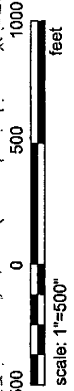
LEGEND:

- AIRPORT PROPERTY LINE
- RUNWAY SAFETY AREA (RSA)
- RUNWAY PROTECTION ZONE (RPZ)
- EXISTING PAVEMENT
- SEGMENTED CIRCLE & WINDSOCK
- AUTOMATED WEATHER OBSERVING SYSTEM (AWOS)





MAGNETIC VARIATION
10° 31' W MAY 2001



DNL	ACRES	SQ. MILES
75	23.25	0.036
70	29.96	0.047
65	70.51	0.110

PROPOSED PROJECTS:

- ① OBSTRUCTION REMOVAL (VEGETATION, TERRAIN, BLDGS.)
- ② PROPERTY INTEREST ACQUISITION - (~25 ACRES)
- ③ LOWER ACCESS ROAD & PARKING LOT
- ④ INSTALL HOLDING POSITION SIGNAGE & MARKING (RW/TW INTERSECTIONS)
- ⑤ INSTALL PAIS

- LEGEND:**
- AIRPORT PROPERTY LINE
 - - - FUTURE AIRPORT PROPERTY LINE
 - RSA
 - RUNWAY SAFETY AREA (RSA)
 - RUNWAY PROTECTION ZONE (RPZ)
 - EXISTING PAVEMENT
 - PROPERTY INTEREST ACQUISITION
 - OBSTRUCTION REMOVAL
 - SEGMENTED CIRCLE & WINDSOCK
 - AUTOMATED WEATHER OBSERVING SYSTEM (AWOS)

**ALTERNATIVE 2: FUTURE (2010) NOISE CONTOURS
MONTGOMERY COUNTY AIRPARK**

DRAWN BY: MWS CHECKED BY: CWM SCALE: C=500 DATE: FEBRUARY, 2005

EXHIBIT
4-2

