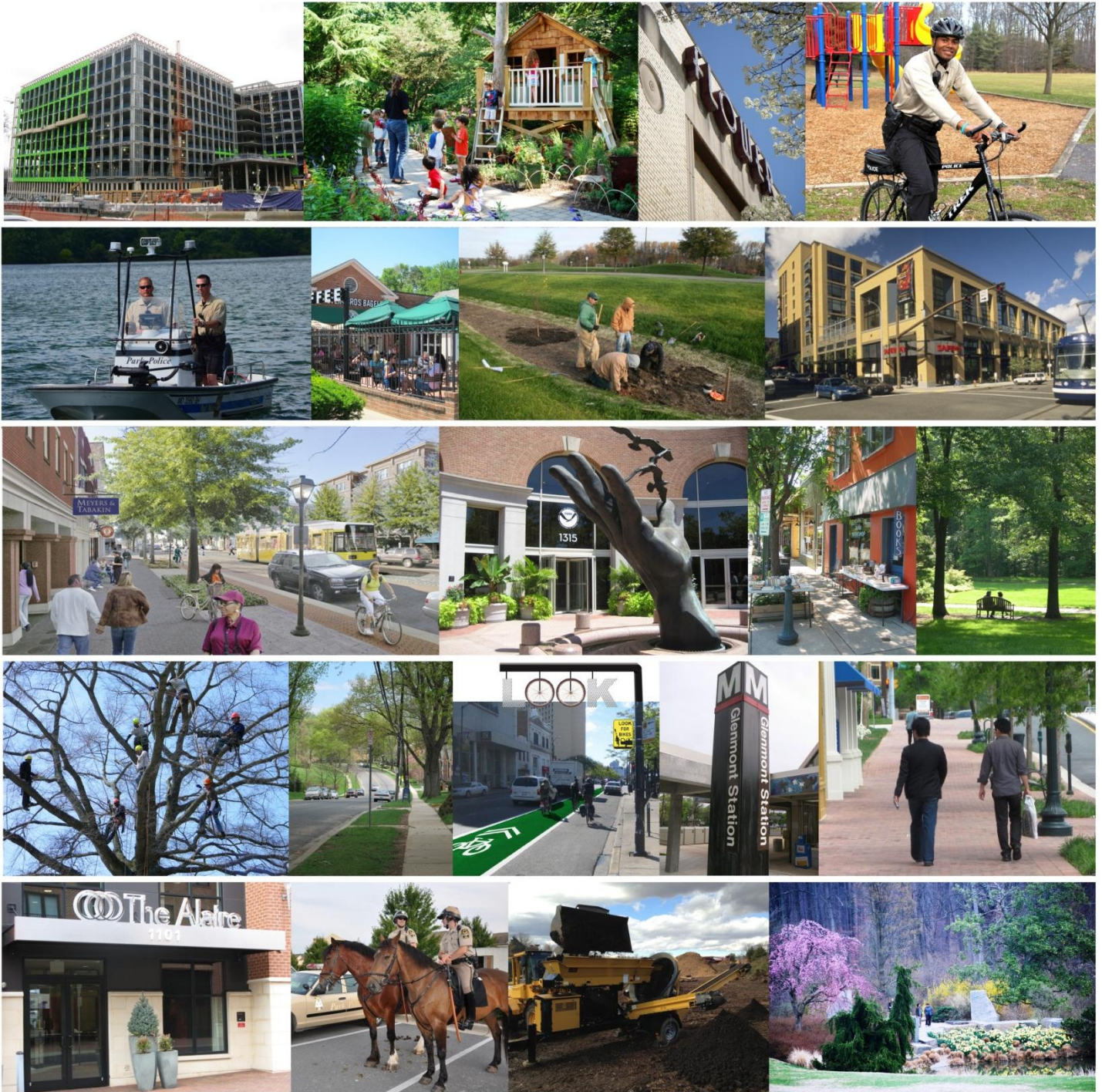


spring  
2013

# semi annual report to council



montgomery county planning department | montgomery county department of parks  
MontgomeryPlanning.org | MontgomeryParks.org





resident Navarro and Members of the Council:

It is my pleasure to summarize the latest efforts of the Planning Department and Department of Parks in our spring 2013 semi-annual report.

In the last six months, staff in both Departments have continued to advance projects and initiatives in their respective work programs. We have summarized the high points in this report.

We were pleased to be recognized by the County Executive in his recent State of the County speech for the Planning Department's contribution to economic development. In a speech focused on the county's economic progress, County Executive Leggett called out the potential for job creation from master plans, saying we are making "visionary investments" in the Great Seneca Science Corridor and "transforming" White Flint and Shady Grove. In tying the White Flint and Shady Grove plans to our greatest transportation asset, Metro's Red Line, we are growing in some of the county's most strategic places. Those plans are in keeping with the Planning Board's decade-long goal of focusing density near transit to generate housing, jobs and services while preserving our Agricultural Reserve and established neighborhoods.

With the drafting of the East County Science Gateway plan, which focuses on redeveloping aging commercial nodes near the U.S. Food and Drug Administration headquarters, we hope to generate new jobs, housing opportunities and services in an area that has long needed them.

Our work has been noticed beyond the county level. In February, we received a Maryland Sustainable Growth Award for White Flint plan implementation. The prestigious state-level award recognized that the plan has achieved several smart growth principles, including quality of life improvements, high-quality design and environmental sustainability.

In addition to focusing on jobs, our planning efforts will result in significant new affordable housing opportunities. In Shady Grove and White Flint, for example, the two plans will generate 2,628 affordable units at full build out. White Flint will yield 1,255 Moderately Priced Dwelling Units, a huge jump from the 211 existing units. Shady Grove development will include 993 MPDUs and 380 workforce housing units.

Beyond that, the new Commercial Residential Zone offers affordable housing above the county requirements as an incentive for bonus density.

As you will read in the pages that follow, our master plans, the Zoning Revision Project and the Countywide Transit Corridors functional plan are reaching project milestones on track with Council's work plan schedule.



The Department of Parks has also been recognized nationally. The Vision2030 Strategic Plan and the 2012 Parks, Recreation and Open Space (PROS) Plan have been awarded The National Capital Area Chapter of the American Planning Association's award for Outstanding Regional or Comprehensive Plan as well as the Project Excellence Award from the Society of Outdoor Recreation Professionals. Both awards recognize the Department of Parks' continued commitment to allocate its resources wisely and responsibly and in collaboration with other County agencies. These plans are already proving useful as our county becomes more developed and the demand for open space and urban amenities, such as dog parks, increases.

We are very pleased to inform you that the Montgomery County Parks Foundation raised over \$415,000 in 2012 – a 244% return on the Department's annual investment! – to support donor-designated programs including the development of boardwalks in the upper Rock Creek and stream reforestation, among others. The Foundation also successfully negotiated a countywide Whole Foods 5% day that raised \$27,000 in support of the Department's community gardens program. The coming year promises to be an even busier one for the Foundation, with two million-dollar capital campaigns in the works for Josiah Henson Special Park and Brookside Gardens as well as the development of a system-wide corporate sponsorship program.

Upcoming changes to our National Pollutant Discharge Elimination System (NPDES) permits, coordination with the WSSC on a Consent Decree to make numerous repairs in many M-NCPPC watersheds, and ongoing efforts to ensure our parks are in compliance with Americans with Disabilities Act requirements (ADA) continue to represent a significant amount of work for the Department. Resources allocated through the Water Quality Protection Fund have been a critical factor in the Department's ability to comply with its requirement to restore and improve damaged streams and waterways and maintain the ecological integrity of the county's valuable streams and rivers.

The Department's commitment to stewardship of our county's natural resources is also evident in its continued energy conservation projects, funded in part by a grant from the Department of Energy. In FY12, the Department's energy costs for electricity, natural gas and propane were reduced by 13%, 37%, and 18%. The Department's overall recycling rate also increased to 71% in FY12, up from 33% in FY03.

I continue to be impressed by and grateful for the hard work and commitment of the staff from both Departments. It is because of their hard work, dedication and creativity that the achievements in this document were possible. They deserve our sincerest thanks.

We look forward to sharing our other accomplishments and discussing these and other issues at the semi-annual presentation on April 2.

Respectfully submitted,



Françoise M. Carrier  
Chair, Montgomery County Planning Board  
The Maryland-National Capital Park and Planning Commission

# planning

## featured projects

The Planning Department is proud to play a major role in helping forge a positive future for Montgomery County. As we look forward to emerging from the economic challenges of the last few years, the Planning Department's plans and initiatives will continue to improve quality of life throughout the County.

Page | 5

Planners have made great progress on six master plans, all of which are on schedule to be delivered to Council before the end of the year. Those plans demonstrate our commitment to building diverse, sustainable communities by concentrating development near existing infrastructure, maximizing flexibility in targeted growth areas and encouraging mixed-use development.

Thanks to hours of work by staff and dozens of Planning Board reviews, the zoning code rewrite we will present to Council this spring will change the way we plan. It, too, provides greater flexibility in building standards for the right kind of growth in strategic areas. It simplifies what is now an unwieldy document that is difficult to use or understand, and it helps streamline regulatory review.

Other positive changes are coming to our development review process with the debut of ePlans, which allows plans to be submitted and reviewed online. In March, we went live with our first two plan types – preliminary and site plan applications – and others will follow soon.

The comprehensive Transportation Policy Area Review (TPAR) test, approved by Council last fall, will ensure that transportation needs are mitigated during plan review with a simplified transportation test. The Planning Board and Staff have revised LATR/TPAR Guidelines, reflecting the changes Council made in the Subdivision Staging Policy, for use in future applications.

The Department has made great progress in speeding up Planning Board resolutions. In the last several months, the Planning Board has approved resolutions on the same day it takes action on an application.

## master planning program



### Plan: Chevy Chase Lake Sector Plan

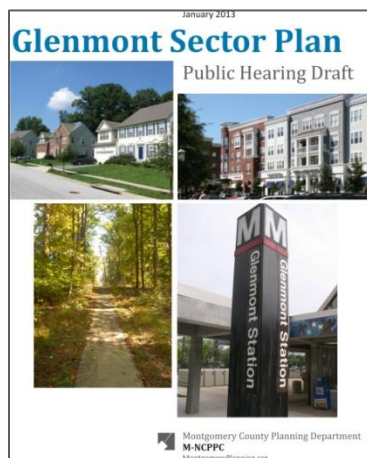
**Status:** The Planning Board transmitted its draft of the sector plan and the design guidelines to the County Council and County Executive in January. The Council held a public hearing in March. Staff is now working with Council analysts to respond to Council questions and directives.

Page | 6



### Plan: Long Branch Sector Plan

**Status:** Following a public hearing in February, the Planning Board is holding worksessions to finalize its draft of the sector plan. Staff hosted a community meeting in January, which was attended by about 100 people, to keep residents apprised of the plan's progress. The sector plan will be transmitted to Council in April or May.




### Plan: Glenmont Sector Plan

**Status:** The Planning Board held a public hearing on the sector plan in mid-February and is holding a series of worksessions to finalize its draft. To help inform residents and other stakeholders about the primary recommendations, staff developed an online slide show with captions in both English and Spanish.



### Plan: White Oak Science Gateway Master Plan

**Status:** Following a Council directive to use the new TPAR test in the White Oak Science Gateway plan, staff has re-run the transportation models. The information gained will be incorporated into the staff draft, which will be presented to the Planning Board in early April. The Board is expected to hold its public hearing in May.



# 10 Mile Creek Area Limited Amendment

Plan, on this sensitive watershed. Planners hosted two community meetings in Clarksburg – each attended by more than 100 people. In March and early April, staff presented preliminary findings to the Planning Board.

**Plan:** 10 Mile Creek Area Limited Amendment to the Clarksburg Master Plan

**Status:** Planners are analyzing the existing environmental health of Ten Mile Creek and the potential impacts of development scenarios, including the build-out envisioned in the 1994 Clarksburg Master

Page | 7



**Plan:** Burtonsville Crossroads Neighborhood Plan

**Status:** The Burtonsville Crossroads Neighborhood Plan was approved and adopted in December. At the same time, the Council approved a Zoning Text Amendment to change the Rural Cluster Zone to help protect the headwaters of the Patuxent River. The Sectional Map Amendment was approved in March. The design guidelines will be completed and delivered with the approved and adopted version of the plan.



**Plan:** Countywide Transit Corridors Functional Master Plan

**Status:** Transportation planners presented the staff draft of the Countywide Rapid Transit Corridors plan to the Planning Board in March. The draft includes recommendations for the location and treatment of corridors throughout the county, as well as the MARC Brunswick Line expansion and designation of Bicycle-Pedestrian Priority Areas. Planners have done extensive outreach on the plan, holding three community open houses last fall, following two community meetings the previous year. The community meetings drew about 200 people. Staff also is presenting about the project to interest groups by invitation.



## regulatory planning program



**Initiative:** ePlans

**Status:** Plan review entered the modern era when ePlans, our new software system configured to link to the department's database management system, went live in March. Since then, all preliminary and site plan applications have been submitted through the department's electronic portal, which enables them to be analyzed by staff and other agencies using a shared review feature. ePlans also allows planners to track the time required for each stage of the process. Record plat applications are scheduled to go live in mid-May, with other plan types to follow by year's end.

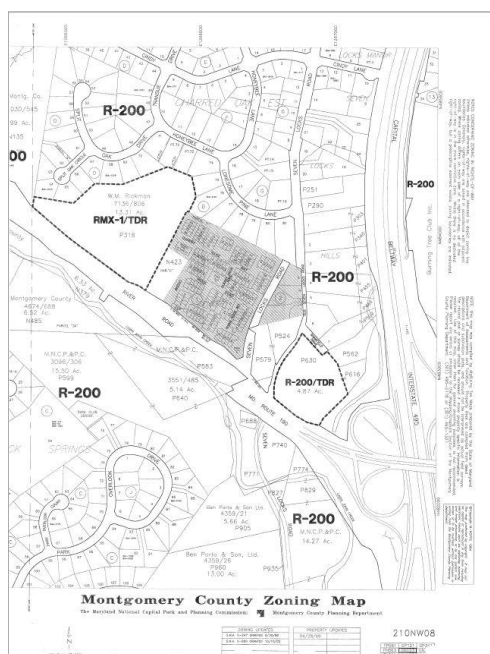
Page | 8



**Initiative:** Zoning Code Revision

**Status:** Starting last fall, the zoning code revision team began reviewing the draft Zoning Code with the Planning Board, article by article, definition by definition, incorporating feedback from Board members, county agency representatives, and numerous stakeholders. Later this spring, the Board will transmit the final draft as well as implementation recommendations to the Council. In

February, Planning Board Chair Françoise Carrier sent a letter to more than 10,000 property owners informing them of proposed zone changes and encouraging them to learn more and to comment on the changes before the Board. The Planning Department and the Planning Board Chair look forward to giving the Council an overview of the proposed rewrite, scheduled for the same day as our semi-annual report.



**Initiative:** Corrective Map Amendments

**Status:** Staff brought 16 Corrective Map Amendments to the County Council in the last fiscal year, with another 26 slated to go forward this spring. The corrective amendments fix mapping errors and update the official zoning map. After adoption of the remaining amendments, Council will be asked to designate the digital GIS zoning layer as the official zoning map, which will retire the hard copy maps.

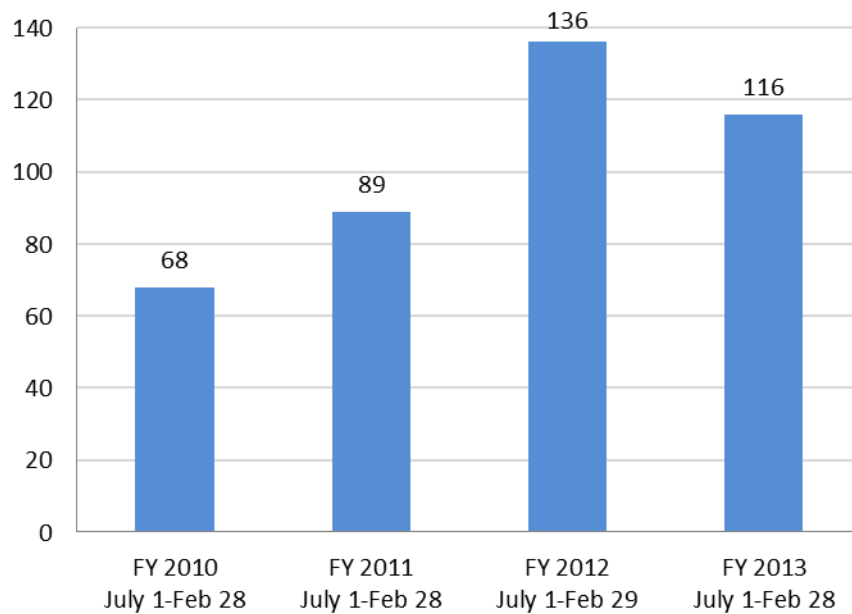


### development activity

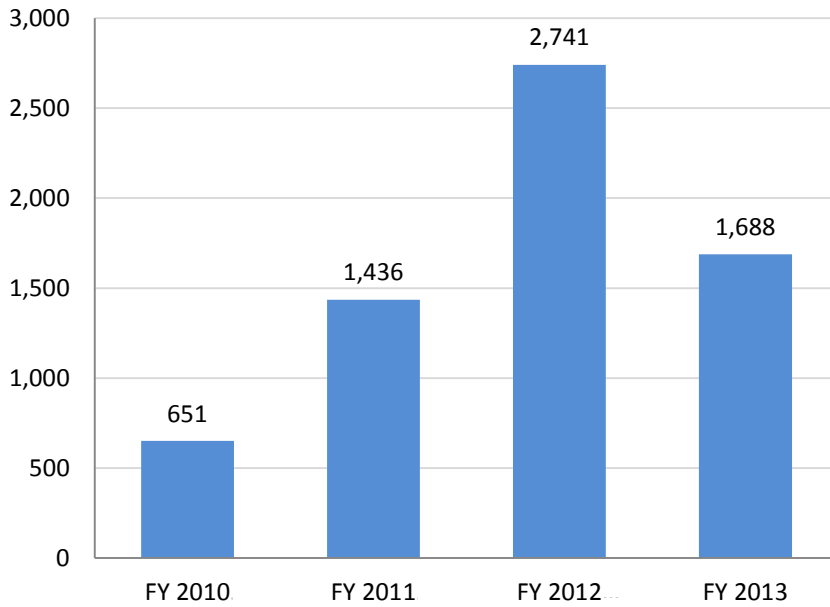
Analyzing the first six months of development activity in FY13, the Department has seen a slowing in the total number of residential units – 1,688 compared to 2,741 in FY12 – and commercial square footage because applications have been smaller in scope. The 2012 application Pike and Rose, which redevelops Mid-Pike Plaza in White Flint, added 1.7 million square feet that year, skewing the results.

The analysis appears to show a shift to more housing than commercial development; staff will watch the applications in the next several months to determine whether that constitutes a trend. Record plats continue to be filed in high numbers, indicating builder confidence.

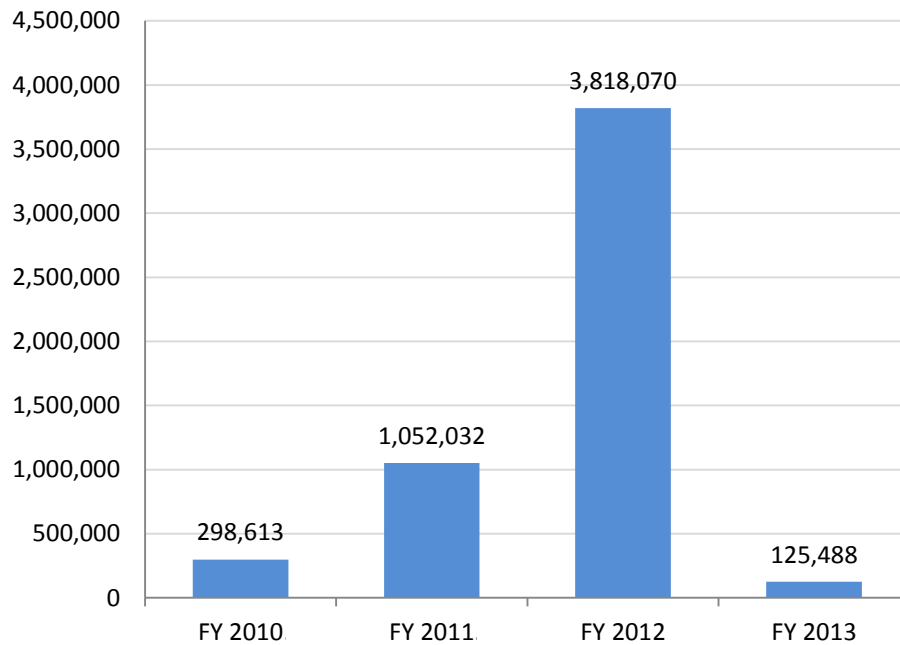
### Record Plats, July 2009 - February 2013



Approved Dwelling Units  
July 2009 - February 2013



Approved Commercial Development  
July 2009 - February 2013



**Initiative:** Notable development applications

**Status:** Among the applications approved by the Planning Board in the last few months are:



**White Flint Mall sketch plan.** Mixed-use development on the 45.3-acre site in North Bethesda will transform the mall property into a community featuring residential, office, retail and public uses and a large central plaza, a 2.3-acre addition to an existing neighborhood park and a potential elementary school site. The 5.22-million square foot development will include 2.87 million square feet of residential uses.

Page | 11

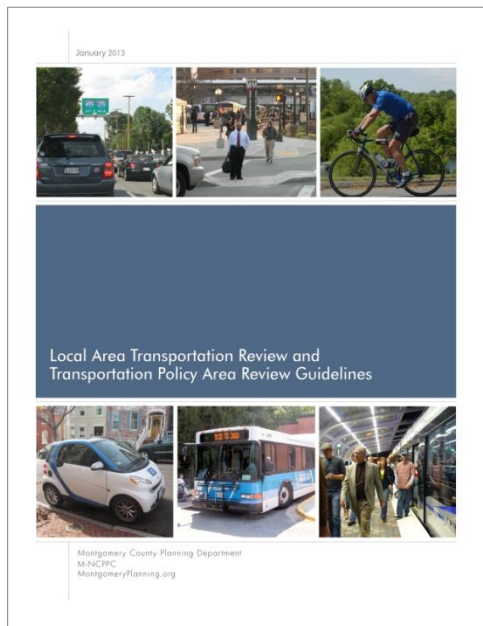


**Studio Plaza site plan.** Fenton Village in the Silver Spring Central Business District will see significant change when this mixed-use building on five acres bordered by Thayer Avenue, Fenton Street, Silver Spring Avenue and Mayor Lane is built. The 418,069 square foot building will include 10,500 square feet of retail and 415 dwelling units, including 15 percent Moderately Priced Dwelling Units. The location is a five-minute walk from the Silver Spring Metro Station.



**Shady Grove Station preliminary plan.** Located at the Montgomery County Service Park between Shady Grove Road and Redland Road, the preliminary approval includes 2,210 residential units, including 752 townhouses and 1,458 multi-family units as well as 41,828 square feet of retail, and 131,422 square feet of office development, a four-acre public park, a library and an elementary school site. Fifteen percent of the development will be Moderately Priced Dwelling Units and 10 percent workforce housing. The project will result in 93

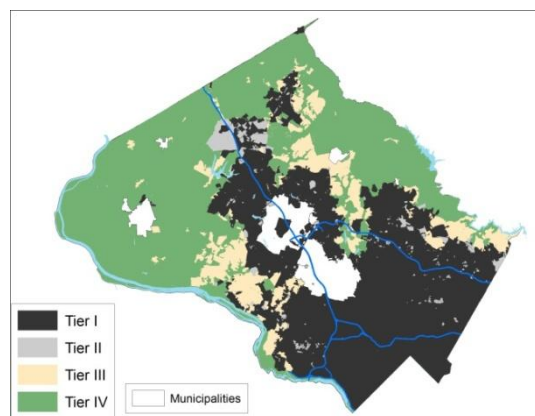
Transferable Development Rights being purchased.



**Initiative:** Subdivision Staging Policy Guidelines

**Status:** Last fall, the County Council approved the 2012-2016 Subdivision Staging Policy. In January, the Planning Board approved the guidelines for implementing the changes in Local Area Transportation Review and Transportation Policy Area Review (LATR-TPAR) required of applicants to ensure transportation adequacy for new development. LATR determines the adequacy of local roads by measuring congestion; TPAR determines whether the entire policy area has adequate transit and roadway capacity. The LATR-TPAR Guidelines detail the methodology for conducting the analysis for development applications and specify mitigation strategies.

Page | 12



**Initiative:** State Sustainable Growth & Agricultural Preservation Act

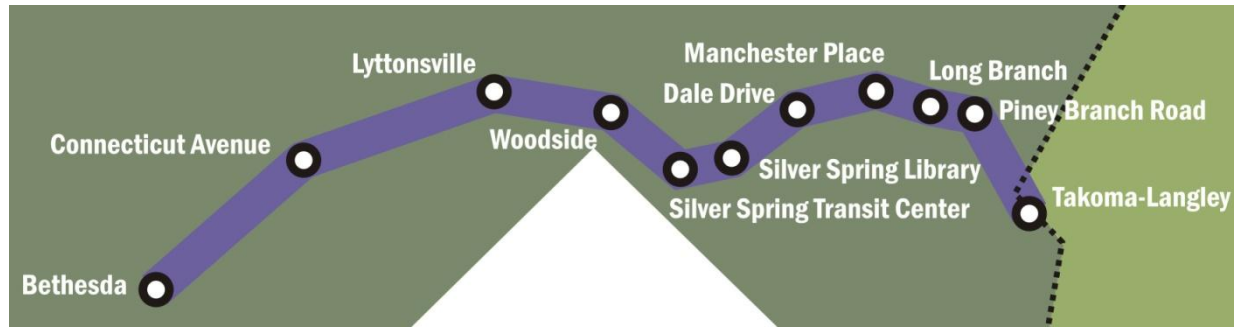
**Status:** Last fall, Montgomery County became the first county in Maryland to adopt a Tiers Map, as required by the Sustainable Growth and Agricultural Preservation Act of 2012 (SB 236). This state law requires local jurisdictions to establish and adopt growth tiers to control the number of new subdivisions on septic fields.



**Initiative:** Historic Preservation work permits

**Status:** Between October and the end of February, historic preservation staff evaluated 62 Historic Area Work Permits (HAWP), six more than during the same period in FY12. A recently completed rehabilitation project on Mohican Road in Bethesda (pictured on left) proceeded after being granted a HAWP.





**Initiative:** Purple Line and Capital Crescent Trail Design Coordination

**Status:** The Maryland Transit Administration is preparing preliminary engineering for the Purple Line and the Capital Crescent Trail that affects many sector plans underway -- as well as adopted plans for Silver Spring, Takoma/Langley and Bethesda. Transportation planners are continuing to coordinate with community planners and MCDOT to ensure that the Purple Line designs complement overall community goals for each area. The Planning Board was briefed in February and will review the State's mandatory referral application next fall.

### information resources program



**Initiative:** In-depth Demographic Analyses

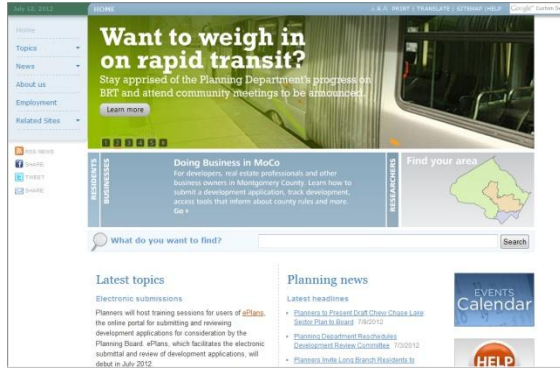
**Status:** Center for Research and Information Systems (CRIS) staff completed analyses to improve understanding of County demographics, including a detailed rental housing analysis for the Glenmont, Long Branch, and White Oak Science Gateway master plans. Researchers also analyzed unemployment, median income and poverty level data to support applications by the Executive Branch for Enterprise Zone designation for the Glenmont, and Long Branch master plan areas.



**Initiative:** Information Systems

**Status:** Using GIS technology, CRIS staff created an online tool to enable web users to build lists of home-

owners and civic association contacts. Communications staff sent a postcard to 1,100 association contacts to inform them about the new feature. CRIS staff also developed a webpage to help inform residents about the Zoning Revision project, featuring interactive county maps. One map depicts current zoning, the other shows future zoning after the revisions take effect.



**Initiative:** Web and social media

**Status:** The communications team continued to maintain and upgrade the award-winning MontgomeryPlanning.org webpage to showcase the Department's work. A new feature includes an image gallery with captions in English and Spanish that summarize the Glenmont Sector Plan recommendations. Our Facebook fan base continued to increase, and the Department launched a Twitter account. The Straight Line blog, with a handful of regular contributors from

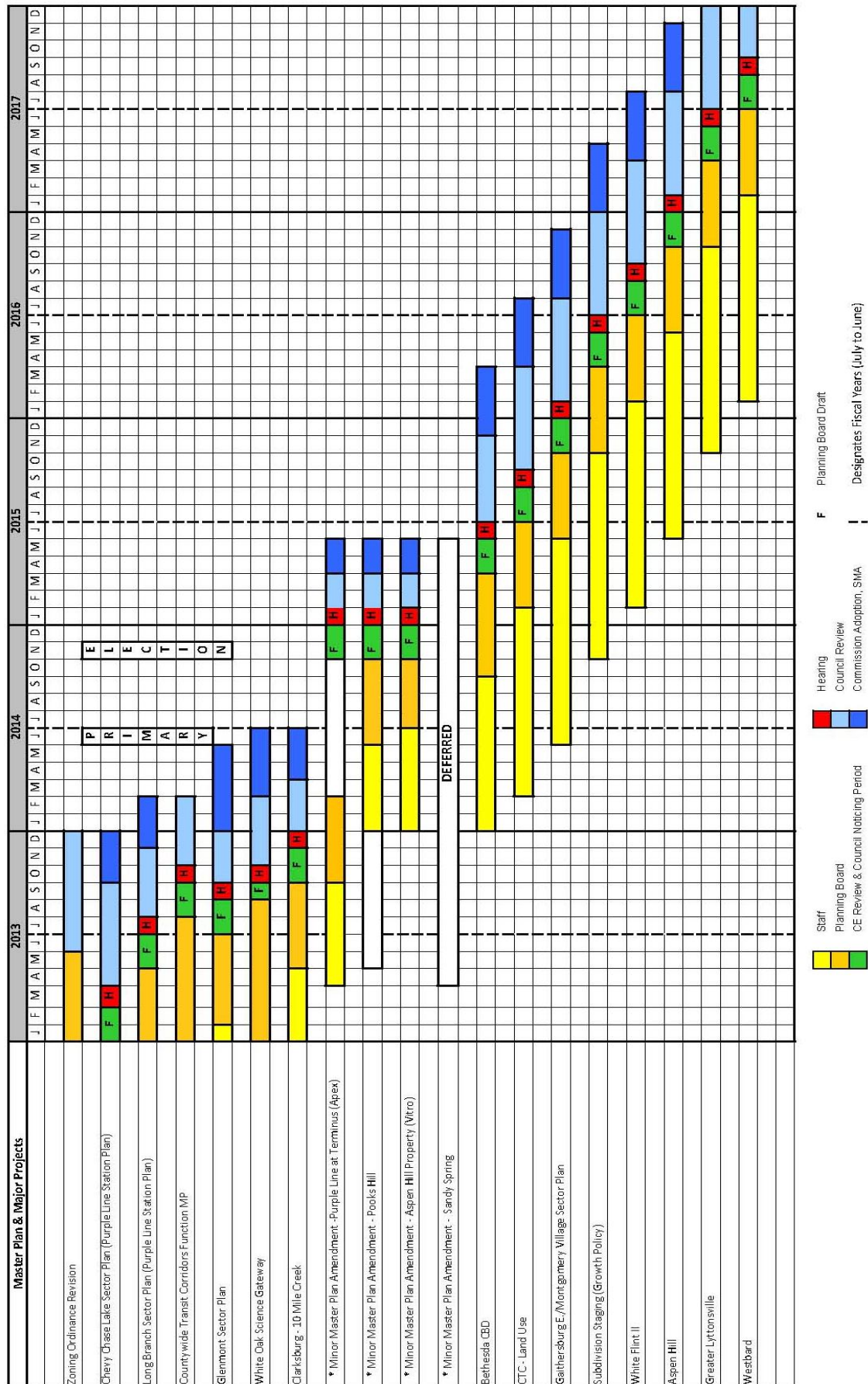
Page | 14

the department, won gold recognition from AVA Digital Awards, an international contest reviewing electronic media.



**Initiative:** Celebrating MoCo Speaker Series

**Status:** The agency hosted two speaker series presentations in February, with another scheduled for mid-April. The speaker series offers a free venue for members of the public to learn more about planning issues and how they relate to community-building, as well as professional development opportunities for planners.



# parks

## I. What We've Done

**Sustainable Design:** The Department is continuing to incorporate sustainable design practices in our park development projects. The renovation of Evans Parkway Neighborhood Park is one of 150 projects in the nation selected to participate in the pilot program for the Sustainable Sites Initiative (SITES), an interdisciplinary effort led by the American Society of Landscape Architects, the Lady Bird Johnson Wildflower Center and the United States Botanic Garden to create voluntary national guidelines and performance benchmarks for sustainable land design, construction and maintenance practices.

Page | 16



East Norbeck Pervious Parking Lot

Design for the renovation of the Rock Creek Maintenance Yard is underway with the goal of achieving LEED Gold Certification, and the new parking lots at Little Bennett Regional Park and East Norbeck Local Park both include sustainable elements, such as use of recycled materials, pervious paving and energy efficient fixtures. The old fuel site at the Wheaton Maintenance Yard has been demolished and replaced by a new state of the art above-ground fuel site that is controlled by a Fuel-Master computer system and virtually eliminates negative environmental impacts. The environmentally unsound

underground fuel tanks have been removed.

The implementation of the Fleet-Vehicle Assessment completed in 2011 is underway to expand the Department's use of hybrid vehicles, convert trucks to use bio-diesel fuel (20% during summer and 5% during winter), increase vehicle efficiency, and reduce carbon emissions. Additional work is underway to reduce domestic water use for irrigation by 15%, design new facilities and renovation projects to meet LEED certification criteria, and formalize "green procurement" guidelines for the Department, consistent with the Sustainability Policy recently adopted by M-NCPPC.

**Collaboration:** The Department continues to work with County, State and Federal agencies to eliminate duplication of services and cooperate wisely. State Highway Administration (SHA) planting efforts on parkland as part of the forest mitigation for the ICC are nearing completion. To date, more than 300 acres have been reforested throughout Montgomery County and are now in the monitoring and maintenance phase. SHA is planting additional trees in conjunction with the stream restoration, wetland creation, and storm water management projects implemented as part of the ICC Environmental Stewardship and Compensatory Mitigation Program (ES/CM). These projects are expected to all be implemented by 2015.

The Planning Board adopted an amended Athletic Field Use Permit Policy in January 2013 to reflect the streamlined field permitting processes and procedures now in effect as a result of consolidating field permitting with the County's Community Use of Public Facilities (CUPF).



Collaboration with the Recreation Department continues with the first joint Summer Camp Guide, produced in January, with a new cover look to match the quarterly Program Guide produced in collaboration since 2006. Park Police continue to proactively patrol Montgomery County pools and recreation centers, investigate and track down suspects who steal from cars in the parking lots and lockers, engage with youth who visit the recreation centers, and help out at the Homework Club at Rosemary Hills Recreation Center.



Park Police at Presidential Inauguration

Our Park Police are actively involved in supporting community events, including the 11th Annual Keith Joseph Basketball Tournament, hosted by Park Police on January 22, 2013, at the Mid-County Recreation Center. An all-day event, the Keith Joseph Tournament brings together kids from several community centers and Park Police members for a day of fun, food and competition. M-NCPPC Park Police officers were also on hand at the 57<sup>th</sup> Presidential Inauguration on January 21, 2013, starting at 3:00 a.m. Monday morning and returning after 8:00 p.m. that evening. Park Police officers were stationed at 12<sup>th</sup> Street and Pennsylvania Avenue along the parade route (picture at left).

**Required Federal and State Mandates:** Under the Department's two National Pollutant Discharge Elimination System (NPDES) permits, the Department is required by the US EPA and the Maryland Department of the Environment to develop Best Management Practices (BMPs) to clean up storm water pollution and satisfy the EPA's six Minimum Control Measures. BMPs and other related initiatives include reforestation, personnel education, illicit discharge elimination, removal of impervious surfaces, and the design, construction and maintenance of storm water management facilities. Upcoming changes to our NPDES industrial and municipal permits are likely to require us to retrofit 20% of our untreated impervious acres every five years. NPDES efforts have been able to continue due to funding from the Montgomery County Water Quality Protection Fund (WQPF), however, further funding will be required to address the additional measures which must be taken to ensure continued compliance.

Parks staff is working closely with several agencies including the Maryland Department of the Environment, U.S. Army Corp of Engineers, Maryland Department of Natural Resources, and the Maryland Historical Trust, among others, to minimize the environmental impact of a Consent Decree that obligates WSSC to make numerous repairs to reduce and eliminate sewer overflows and leaks in Montgomery County. Many repairs are occurring in M-NCPPC watersheds including Sligo Creek, Cabin John, Northwest Branch, Muddy Branch, Paint Branch, Little Falls, Seneca Creek, and Watts Branch. Information is being gathered on wetlands, historical and



Bio-retention efforts

cultural resources, forest stand delineations and individual tree surveys in areas which will be impacted; pink ribbons have been placed on affected trees in our parks. Repairs will begin in the Rock Creek watershed in the coming weeks.

The Parks Department is proceeding on schedule with Americans with Disabilities Act (ADA) Compliance activities including access audits and transitions for over 280 additional parks, employee training, policy review, and public outreach. In January 2013, more than 600 employees were trained in ADA laws and awareness. Construction improvements at four parks are underway, and signage improvements at 19 parks will be completed by August 2013. Additional resources and funding are likely to be needed for the major maintenance improvements and capital projects necessary to comply with the standards of the 2010 ADA guidelines.

**Enterprise Successes:** The Enterprise Division continues to increase revenue sufficient to cover all operating and debt service expenditures as well as CIP projects, and, for another consecutive year, is on target to finish in the black in FY13. Event Center revenue continues to grow and is up 3% over the same time period last year, largely due to the new tent pads installed at Woodlawn Manor and Seneca Lodge. These types of facility improvements coupled with effective management, innovative programming, and a continued investment in marketing have ensured the division remains self-sustaining.



**Park Activity Buildings:** Public use of the 18 permitted park activity buildings (PABs) has been increasing steadily and is now at an average of 35% utilization during peak hours. This is primarily due to increased marketing efforts which have produced a 74% return on investment. Keyless entry (similar to ZipCar technology) is being installed in all PABs to eliminate the need for customers to travel to Parkside Headquarters to pick up or drop off keys, which is anticipated to increase future use. Seven of the eleven vacant PABs are now occupied with single tenants, and RFPs will be issued within the next several months to identify tenants for the remaining four.

**Children in Nature:** Our Horticulture, Forestry and Environmental Education Division (HFEE) planned and hosted a free Environmental Educators night on October 11, 2012 to build awareness of the many opportunities the Department provides for school field trips, student service learning hours and professional development in support of the State's environmental literacy graduation requirement. In attendance were approximately 130 teachers and other representatives from thirty environmental education organizations, including the National Park Service, NASA, the Marine



Science Consortium, the Audubon Naturalist Society, and the Maryland Association of Environmental and Outdoor Educators. HFEE staff plan to participate in the third annual Green Schools Summit at Sandy Point State Park in late May which is attended by thousands of students from Maryland Green Schools and highlights hands-on activities by dozens of environmental education providers including Department staff. The Director continues to be a member of the Governor's Leadership Team on Children In Nature.



Storm Related Damage

**Storm Impacts:** Total costs for the Derecho windstorm are estimated at \$428,515. Staff spent an estimated 20,725 labor hours on debris removal. We are seeking reimbursement from FEMA to include materials and contract work for repairs to playground equipment, benches, shelters and various structures throughout the Parks. We are currently collecting and compiling data on Hurricane Sandy. Three areas of repair damages that will be submitted for reimbursement include the South Germantown driving range canopy, the Rock Creek Regional Park Shelter D and roof damage at the Potomac Horse Center. The total labor hours are still being reviewed from our SmartParks data.

**Community Gardens:** The popularity of our community gardens program continues to increase each year. Plots in eight out of the 10 existing Parks community garden sites were completely sold out by February 15th this year. As of March 1st, only 20 out of 453 plots remain to be rented at the Briggs Chaney and Maple Avenue garden sites. The partnership with MCPS to install community gardens on MCPS property has worked well at all sites except Emory Grove, which was discontinued because MCPS reclaimed the property.

**Parks Foundation:** The Montgomery County Parks Foundation (The Foundation) raised over \$415,000 in 2012, a 244% return on the Department's annual investment. Approximately \$300,000 will be dedicated directly for donor-designated program support, facility repairs and improvements, benches and trees, and other efforts including the development of boardwalks in the upper Rock Creek, improvements to the Lake Needwood boat docks and stream reforestation. The remainder will be spent to support the capital campaigns for Josiah Henson Special Park and Brookside Gardens, donor and grant management software costs, financial audit requirements, required dedication and recognition signage and other donor-related expenses, and mandatory insurance.



The Foundation also successfully negotiated a countywide Whole Foods 5% day on January 9, 2013, that raised \$27,000 to support our community gardens program. The funds will be used to install and manage the new Long Branch community garden and provide general support for the community gardens program.

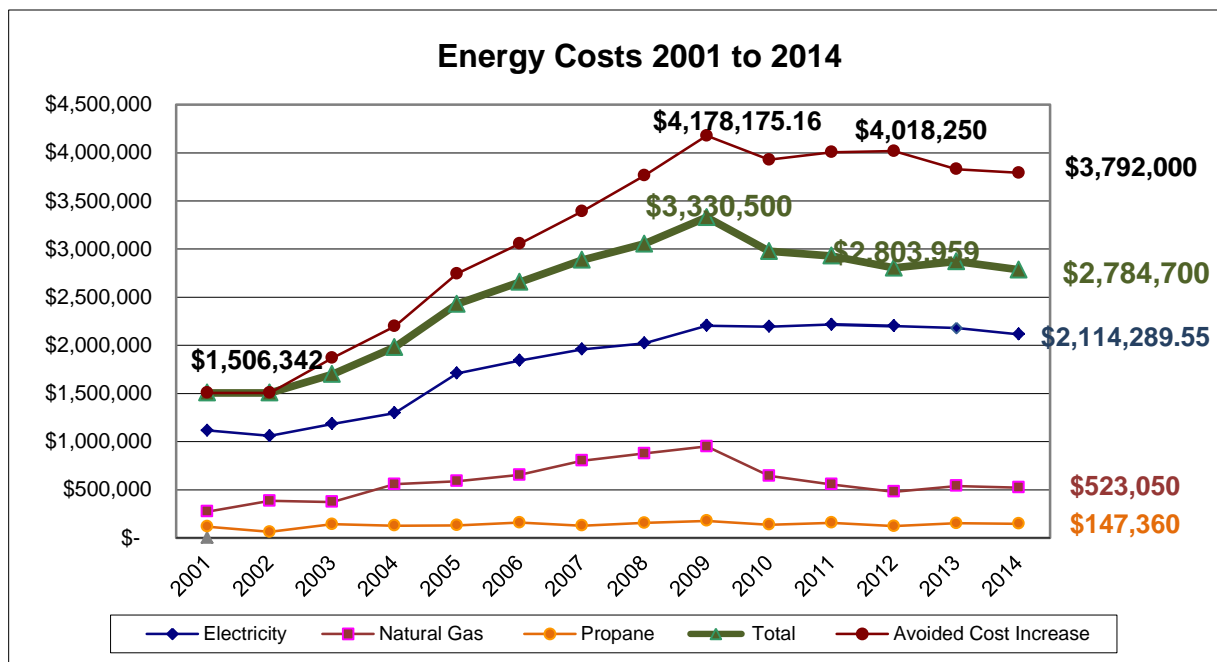


**Volunteerism:** In FY12, over 100,000 pounds of trash and debris was removed from park streams by parks volunteers. We have achieved a 2% increase in volunteer hours for the first six months of FY13 when compared to the same time period in FY12, from 37,778 hours in FY12 to 38,555 In FY13. Volunteer events included the Annual Harvest Festival, MLK National Day of Service projects, and support for National Public Lands Day. The Department is working closely to improve collaboration and coordination with new and existing Friends Groups to maximize support for park facilities and programs and empower citizen involvement in decision-making. Formal agreements are being negotiated with more than half of our existing Friends Groups, and a new Friends Group is in the development stages.



Sligo Creek Volunteer Clean-Up

**Energy and Recycling:** Due to continued energy conservation projects funded in part by a grant from the Department of Energy, the Department was able to reduce FY12 energy costs for electricity, natural gas, and propane by 13%, 37% and 18%. The goal for FY13 is to reduce consumption by 6%, with an emphasis on aging heating and air conditioning systems.



The Department's overall recycling rate has increased to 71% in FY12, up from 33% in FY03, reducing costs by 60% and the total volume of refuse and recycling disposed by 38% over the same time period. In FY13, the focus will be on increasing recycling rates for reuse products such as computers, batteries, scrap metal, tires, batteries, and light bulbs. Staff will continue to reduce yard waste and construction debris disposal to the county transfer station. A pilot program to increase community participation in recycling is underway at the Wheaton Regional Park. Since October 2012, the Department has collected and processed an estimated 1000 tons of storm debris and green waste produced by last summer's



derecho and Hurricane Sandy. This volume of material is roughly double what we have processed in previous years. The material will be transformed into over 1000 cubic yards of mulch and 300 yards of valuable compost for use in our parks. We anticipate reaching a total of 1600 tons of material processed this year, maintaining our closed loop on green waste in the parks.

**Deer Management:** Deer Management efforts for FY13 were completed in February 2013 for 26 park areas covering 15,071 acres. All harvest goals were achieved. A new sharp-shooting location was added this year in Rock Creek Stream Valley Park. Despite the very urban setting of this park, the operation went extremely well and will serve as a model for further expansion into other similar park locations. While data entry/reporting are in progress, total deer harvest for FY13 is estimated at approximately 1,050 deer. As a result, approximately 14,000 lbs. of meat were donated to area homeless shelters.

### Montgomery Parks Events October 2012 – March 2013

- **Annual Fall Apple Festival**, October 21, 2012 at Brookside Nature Center. There were 430 attendees.
- **Darnestown Square Heritage Park Opening**, November 10, 2012. One hundred (100) people came out for a ribbon cutting ceremony. The County Executive, Chair Carrier and Director Bradford took part in the ceremony. Partners included the- Darnestown Civic Association.
- **Annual Harvest Festival**, October 6, 2012 at the Agricultural History Farm Park. We had great weather this year with over 3,000 guests attending to partake in Sheep Dog demonstrations, candle making, farm machinery demonstrations and more. Friends of Agricultural History Farm Park were also involved.
- **16<sup>th</sup> Annual Emancipation Day**, November 2 - 4, 2012 held at Josiah Henson Park, Underground Railroad Trail at Woodlawn Manor, and Oakley Cabin. More than 250 people attended weekend celebrations which included a night hike on the Underground Railroad, reading of the Maryland emancipation announcement and tours of Josiah Henson Park.
- **Silver Spring Thanksgiving Day Parade**, November 17, 2012 in downtown Silver Spring. Participants included 20 Parks staff and Woody the Tree who rode in the bucket truck. A park truck was also decorated as a float.
- **Green Matters Symposium**, February 22, 2013 at Brookside Gardens. This day-long seminar on sustainable landscaping practices was well attended by 250 people.



Sculpture of Williams Darnes, founder of Darnestown

## II. Where We're Headed

**Urbanizing Areas:** As our County becomes more developed, open space is more needed and valued. The recent PROS Plan designated, for the first time, a new facility category called “Community Open Space,” defined as an open, level, grassy area for a variety of informal recreational activities. Staff is now performing site selection studies to make sure these spaces are protected where they exist or created where they are lacking throughout the County. Public demand for additional dog parks in urban areas is also growing. Currently, there are five M-NCPPC dog parks on parkland in Montgomery County, all of which are located in parks outside the beltway.

Page | 22



Urban Dog Parks have been identified as one of the park facilities with unmet needs in areas of high population density by the [Vision 2030 Strategic Plan](#) and the [2012 Park Recreation and Open Space \(PROS\) Plan](#), along with Community Open Space, Skate Parks, and Community Gardens. Staff is working to identify a quick-to-implement pilot urban dog park on existing parkland to serve the residents of downtown Silver Spring and create a long-term plan for dog parks throughout all of our urban areas. Ideas from the public will be welcome throughout the process through the website, public meetings and social media.

**Corporate Sponsorship Program:** In January 2013, the Planning Board adopted a Corporate Sponsorship Policy to provide parameters and order to the growing number of sponsorships and potential opportunities within the park system. The policy clarified that the program will not allow the renaming of entire parks for corporations or the selling or leasing of entire parks related to a sponsorship agreement. Corporate sponsors already support many Department events and facilities providing services to the public, such as the Discovery Center SoccerPlex at South Germantown Recreational Park, which was named in exchange for corporate support. The next step is to develop system-wide sponsorship packages with a “menu” of sponsorship opportunities and related benefits and values. Preliminary discussion with partners, and other public agencies operating facilities in parks, indicate there may be potential to expand the sponsorship program to include non-Commission entities operating on parkland.

**Innovation:** The Park Development Division (PDD) has launched “ProjectDox,” a customized system that enables all project information, such as documents, drawings, 3D models, project email, and faxes, to be centralized in one virtual, real-time online location so it is visible, accessible, and usable to everyone as they need it. This will allow for shared review and online approvals, resulting in direct, controlled and immediate communication among all project team members and greater efficiency during design and construction processes.

**Innovation in Education and Training:** Brookside Gardens hosted the 10th annual Green Matters Symposium in February, with prominent speakers focusing on the role of emerging technology in sustainable practices in the landscape.



The Department launched an effort to support succession planning and the professional development of future managers which included a customized, internal “Leadership Development Program” managed by the Department. The Leadership Development program includes project teams who will provide tactical solutions and support to address the objectives from the Vision 2030 Strategic Plan. In addition to the in-house leadership program, the Department offered other supervisory training choices to qualified candidates: the Supervisor Management School or Park Maintenance Management School at the National Training Center at Oglebay Resort and Conference Center in West Virginia. With a limited number of slots available, applicants completed short essay questions and provided resumes and/or work histories in order to qualify for participation. The Department is also providing training for park maintenance management and supervision, ADA compliance, and environmental education for operational staff.

#### **Upcoming 2013 Events and Openings**

Starting in March, Enterprise’s seasonal facilities began opening for the season, including the South Germantown Driving Range, the Little Bennett Camp Grounds, the Olney Skate Park, the Miniature Trains, and the boat rental facilities. The wedding season is already underway and promises to be busier this year - Seneca Lodge and Woodlawn Manor are both experiencing increased rentals due to the installation of permanent, outdoor tent pads.

Additional events this Spring include:

- **Wheaton Sports Pavilion Open House** on March 17, 2013 at Wheaton Sports Pavilion.
- **Black Hill Visitor Center Outdoor Classroom Open House** on March 24, 2013 from 1:00 – 4:00 p.m. at Black Hill Regional Park. New outdoor classrooms at Black Hill Regional Park allow students to learn about plants, animals and nature in their natural outdoor environment.
- **Annual Egg Hunt** on March 29, 2013 from 10:00 a.m. – 3:00 p.m. at Meadowside Nature Center. Attendees will search for real eggs through our meadows, then dye and decorate the eggs they find.
- **Opening Day Celebrations for Historic Sites** on April 12 – 14, 2013 at Oakley Cabin, Woodlawn Manor, Josiah Henson Park. Tours and programs to be offered.
- **Potomac River Watershed Clean-Up** on April 6, 2013 from 9:00 a.m. – 12:00 p.m. which will take place at various Montgomery Parks sites. This is the largest regional event of its kind. The Clean-up provides a transforming experience that engages citizens and community leaders and generates momentum for change. The Alice Ferguson Foundation will also support this event.
- **Woodstock Equestrian Park Opening** on April 27, 2013 will feature horse demonstrations in the new arena and on the new cross country course. Park police will provide color guard.
- **The 17<sup>th</sup> Annual Gas & Steam Engine Show** will be held on April 13, 2013 from 10:00 a.m. – 5:00 p.m. and also April 14, 2013 from 10:00 a.m. to 3:00 p.m. This show will feature Agricultural History Farm Park gas engines, tractors, antique cars and trucks, live music, hay wagon rides, food, kiddie tractor pull. Friends of Agricultural History Farm Park will support this event.
- **The Annual Sizedah Be-Dar Persian Spring Festival** will be held on April 6, 2013 at Black Hill Regional Park.
- **Be Active Montgomery County Health Festival** on June 8, 2013 at South Germantown Recreational Park featuring vendors, games, health screenings and a speaking program.

### III. Awards and Recognition October 2012 – March 2013

- **National Capital Area Chapter of the American Planning Association 2012 Award for an Outstanding Regional or Comprehensive Plan** was given to Montgomery Parks for the Vision 2030 strategic plan and the 2012 Parks and Recreation Open Space (PROS) plan.
- **National Project Excellence Award from the Society of Outdoor Recreation Professionals** was given to Montgomery Parks for the Vision 2030 strategic plan and the 2012 PROS plan.
- On December 1, 2012, the Department received a **Montgomery County Award for Historic Preservation for the Time Team America Archaeology project at Josiah Henson Special Park**, which will result in a PBS television show likely to air later this year.
- Park Police Detective Gregory Worsey received **the Non-Academy Instructor of the Year Award at the Public Safety Education and Training Center** in Sykesville, Maryland. He helped develop the TASER program and has been an Emergency Vehicle Operator Instructor since 2005.
- Mounted Officer Megan Lau received **the December “Touch of Class Award” from the Maryland Horse Industry Board** and was also the overall **winner of the National Mounted Police Equitation Championships at the North American Police Equestrian Championships**. The Touch of Class Award is presented every month to honor Maryland horses, individuals, teams, organizations or events that have garnered national or international recognition.



- **The Annual Keep Montgomery County Beautiful “The Greydon Tolson Forestry Stewardship Award”** was awarded to Carole Bergmann, staff Forest Ecologist and Weed Warriors founder.
- **The Neighbors of Northwest Branch Honor Award** was awarded to staff Natural Resources Manager Rob Gibbs.

#### IV. Parkland Acquisition and Dispositions (list of acreage acquired or disposed)

Parkland Acquired Between September 1, 2012 and March 1, 2013

- Black Hill Regional Park - 1.35 acres
- Ridge Road Recreational Park - 1.32 acres
- Batchellors Forest Local Park - 17.11 acres
- South Germantown Recreational Park - 1.55 acres
- Carroll Knolls Local Park - 2.60 acres
- Sligo Mill Neighborhood Conservation Park - 0.48 acres
- Northwest Branch Stream Valley Park, Unit 4 - 2.97 acres
- Rock Creek Stream Valley Park, Unit 1 - 2.13 acres
- Matthew Henson Greenway/State Park - 0.50 acres
- Upper Paint Branch Stream Valley Park - 2.41 acres
- Santini Road Local Park - 15.67 acres

**Total Acreage Acquired - 48.09 acres**

## Spring 2013 Semi-Annual Report: Schedule for Major CIP Projects

PDF	FY12	FY13	FY14	FY15	FY16	FY17	FY18	BSY
Battery Lane Urban Park								
Brookside Master Plan Implementation								
Darnestown Square Heritage Park								
East Norbeck Local Park								
Evans Parkway Neighborhood Park								
Falls Road Local Park - Parking Lot Design								
Germanatown Town Center Urban Park								
Greenbriar Local Park								
Kemp Mill Urban Park								
Laytonia Recreational Park								
Little Bennett Day Use Area								
Magruder Branch Trail Extension								
M-NCPPC Headquarters Project								
North Four Corners Local Park								
Northwest Branch Recreational Park								
Rock Creek Maintenance Facility								
Warner Circle Special Park (Facility Plan and Design)								
Woodlawn Barn Visitors Center								
Woodside Urban Park								
Woodstock Equestrian Center								

Design
  Construction
  Procurement or Delay

### Major Projects Completed in FY13

Darnestown Square Heritage Park  
 Takoma-Piney Branch Local Park  
 Little Bennett Campground Parking Lot  
 Meadowbrook Stable Improvements  
 Woodstock Equestrian Center

Last updated: 03-04-13

**PARK & TRAIL PLANNING MAJOR PROJECTS SCHEDULE**

PARK & TRAIL PLANNING MAJOR PROJECTS SCHEDULE	2012												2013												2014											
	J	A	S	O	N	D	J	F	M	A	M	J	J	A	S	O	N	D	J	F	M	A	M	J	J	A	S	O	N	D						
	FY 13						FY 14						FY 15																							
COUNTY-WIDE PARK and TRAIL PLANS																																				
2012 Park, Recreation, and Open Space (PROS) Plan Implementation																																				
PROS Plan Final Document	AP																																			
Site Selection for Skate Parks, Dog Parks, Community Open Space, Community Gardens, Cricket															P																					
Athletic Field Study																	P																			
Service Delivery Strategies: Maintenance Yards, Nature Centers, Park Police Headquarters																												P								
Urban Park Guidelines: Amount and Performance Standards												AP																								
Park Concept Plans																																				
White Flint: Wall Park Urban Park Concept Plan															P																					
White Flint: Civic Green Urban Park Concept Plan																									P											
Wheaton: Town Square Urban Park Concept Plan																								P												
Great Seneca Science Corridor: Civic Green Concept Plan																	P																			
Chevy Chase Open Space Concept Plan											P																									
Trail Plans																																				
Countywide Park Trails Plan Amendment					P							S			PH		AP																			
Area Trail Plans (by Service Area priorities)																			I				S			PH		AP								
Regional And Recreational Park Plans																																				
Northwest Branch Recreational Park MP																																				
Ovid Hazen Wells Recreational Park MP Limited Amendment																				I			S			PH		AP								
Wheaton Regional Park MP Limited Amendment																				I			S			PH		AP								
Agricultural History Farm Park Amendment																											I		S							
PARK, TRAIL, AND OPEN SPACE RECOMMENDATIONS in PLANNING DEPARTMENT PLANS																																				
Countywide Transit Corridors											AP												A													
Minor MP Amend A – Pooks Hill																													AP							
Minor MP Amendment B – Sandy Spring																													AP							
Subdivision Staging/Growth Policy																											AP									
Purple Line Station Area (Long Branch)											AP													A												
Purple Line Station Area (Chevy Chase Lakes)											AP													A												
Purple Line Station Area (Lyttons ville/Rosemarv Hills)																																				
White Oak Science Gateway												AP														A										
Glenmont Sector Plan													AP											A												
White Flint II																																				
Gaithersburg East/Montgomery Village Sector Plan																																				
Burtonsville Community Plan												A																								
Aspen Hill																																				
Bethesda CBD																																				
BRT Land Use																																				

**COLOR KEY**

**P** PLANNING BOARD DISCUSSION

**STAFF WORK**

**PH** PUBLIC HEARING

**I** ISSUES/OBJECTIVES/OUTREACH REPORT

**AP** PLANNING BOARD APPROVAL

**S** STAFF DRAFT

**A** COUNCIL ADOPTION

spring  
2013

# semi annual report to council



montgomery county planning department | montgomery county department of parks  
[MontgomeryPlanning.org](http://MontgomeryPlanning.org) | [MontgomeryParks.org](http://MontgomeryParks.org)