

**Plat Name:** Black Hill  
**Plat #:** 220190160

**Location:** Located in the northeast quadrant of the intersection of Century Boulevard and Dorsey Mill Road.

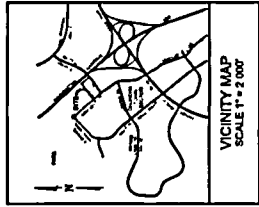
**Master Plan:** Germantown Sector Plan

**Plat Details:** CR (formerly TMX-2) zone; 1 lot, 1 parcel

**Owner:** Levine Investments Limited Partnership

The subdivision plat has been reviewed by M-NCPPC staff and determined to be in compliance with Preliminary Plan No. 12012021B (MCPB Resolution No. 18-071) and with Site Plan No. 82018011A (Certified Site Plan dated April 3, 2019) as approved by the Board, and that any minor modifications reflected on the plat do not alter the intent of the Board's previous approval of the aforesaid plans.





**PROJECT TEAM**  
**ARCHITECT**  
 Gensler  
 1000 North 17th Street  
 Philadelphia, PA 19103  
 (215) 762-1000  
**CLIENT**  
 MHG  
 1000 North 17th Street  
 Philadelphia, PA 19103  
 (215) 762-1000  
**ENGINEER**  
 [Faint text]

**GENERAL NOTES**  
 1. THIS SITE PLAN IS A PRELIMINARY DESIGN AND IS SUBJECT TO APPROVAL BY THE LOCAL JURISDICTION.  
 2. THE DEVELOPER SHALL BE RESPONSIBLE FOR OBTAINING ALL NECESSARY PERMITS AND APPROVALS.  
 3. THE DEVELOPER SHALL BE RESPONSIBLE FOR OBTAINING ALL NECESSARY UTILITIES INFORMATION.  
 4. THE DEVELOPER SHALL BE RESPONSIBLE FOR OBTAINING ALL NECESSARY SURVEYING INFORMATION.  
 5. THE DEVELOPER SHALL BE RESPONSIBLE FOR OBTAINING ALL NECESSARY ENVIRONMENTAL INFORMATION.  
 6. THE DEVELOPER SHALL BE RESPONSIBLE FOR OBTAINING ALL NECESSARY HISTORIC PRESERVATION INFORMATION.  
 7. THE DEVELOPER SHALL BE RESPONSIBLE FOR OBTAINING ALL NECESSARY TRANSPORTATION INFORMATION.  
 8. THE DEVELOPER SHALL BE RESPONSIBLE FOR OBTAINING ALL NECESSARY UTILITIES INFORMATION.  
 9. THE DEVELOPER SHALL BE RESPONSIBLE FOR OBTAINING ALL NECESSARY SURVEYING INFORMATION.  
 10. THE DEVELOPER SHALL BE RESPONSIBLE FOR OBTAINING ALL NECESSARY ENVIRONMENTAL INFORMATION.  
 11. THE DEVELOPER SHALL BE RESPONSIBLE FOR OBTAINING ALL NECESSARY HISTORIC PRESERVATION INFORMATION.  
 12. THE DEVELOPER SHALL BE RESPONSIBLE FOR OBTAINING ALL NECESSARY TRANSPORTATION INFORMATION.

**LEGEND**  
 [Symbol] DRIVEWAY  
 [Symbol] SIDEWALK  
 [Symbol] BIKEWAY  
 [Symbol] PARKING SPACE  
 [Symbol] LANDSCAPE PLANTING  
 [Symbol] UTILITY  
 [Symbol] FENCE  
 [Symbol] WALL  
 [Symbol] CURB  
 [Symbol] DRIVEWAY

**LEGEND**  
 [Symbol] DRIVEWAY  
 [Symbol] SIDEWALK  
 [Symbol] BIKEWAY  
 [Symbol] PARKING SPACE  
 [Symbol] LANDSCAPE PLANTING  
 [Symbol] UTILITY  
 [Symbol] FENCE  
 [Symbol] WALL  
 [Symbol] CURB  
 [Symbol] DRIVEWAY

**LEGEND**  
 [Symbol] DRIVEWAY  
 [Symbol] SIDEWALK  
 [Symbol] BIKEWAY  
 [Symbol] PARKING SPACE  
 [Symbol] LANDSCAPE PLANTING  
 [Symbol] UTILITY  
 [Symbol] FENCE  
 [Symbol] WALL  
 [Symbol] CURB  
 [Symbol] DRIVEWAY

**LEGEND**  
 [Symbol] DRIVEWAY  
 [Symbol] SIDEWALK  
 [Symbol] BIKEWAY  
 [Symbol] PARKING SPACE  
 [Symbol] LANDSCAPE PLANTING  
 [Symbol] UTILITY  
 [Symbol] FENCE  
 [Symbol] WALL  
 [Symbol] CURB  
 [Symbol] DRIVEWAY

**LEGEND**  
 [Symbol] DRIVEWAY  
 [Symbol] SIDEWALK  
 [Symbol] BIKEWAY  
 [Symbol] PARKING SPACE  
 [Symbol] LANDSCAPE PLANTING  
 [Symbol] UTILITY  
 [Symbol] FENCE  
 [Symbol] WALL  
 [Symbol] CURB  
 [Symbol] DRIVEWAY

**LEGEND**  
 [Symbol] DRIVEWAY  
 [Symbol] SIDEWALK  
 [Symbol] BIKEWAY  
 [Symbol] PARKING SPACE  
 [Symbol] LANDSCAPE PLANTING  
 [Symbol] UTILITY  
 [Symbol] FENCE  
 [Symbol] WALL  
 [Symbol] CURB  
 [Symbol] DRIVEWAY

**LEGEND**  
 [Symbol] DRIVEWAY  
 [Symbol] SIDEWALK  
 [Symbol] BIKEWAY  
 [Symbol] PARKING SPACE  
 [Symbol] LANDSCAPE PLANTING  
 [Symbol] UTILITY  
 [Symbol] FENCE  
 [Symbol] WALL  
 [Symbol] CURB  
 [Symbol] DRIVEWAY

**LEGEND**  
 [Symbol] DRIVEWAY  
 [Symbol] SIDEWALK  
 [Symbol] BIKEWAY  
 [Symbol] PARKING SPACE  
 [Symbol] LANDSCAPE PLANTING  
 [Symbol] UTILITY  
 [Symbol] FENCE  
 [Symbol] WALL  
 [Symbol] CURB  
 [Symbol] DRIVEWAY

**LEGEND**  
 [Symbol] DRIVEWAY  
 [Symbol] SIDEWALK  
 [Symbol] BIKEWAY  
 [Symbol] PARKING SPACE  
 [Symbol] LANDSCAPE PLANTING  
 [Symbol] UTILITY  
 [Symbol] FENCE  
 [Symbol] WALL  
 [Symbol] CURB  
 [Symbol] DRIVEWAY

**LEGEND**  
 [Symbol] DRIVEWAY  
 [Symbol] SIDEWALK  
 [Symbol] BIKEWAY  
 [Symbol] PARKING SPACE  
 [Symbol] LANDSCAPE PLANTING  
 [Symbol] UTILITY  
 [Symbol] FENCE  
 [Symbol] WALL  
 [Symbol] CURB  
 [Symbol] DRIVEWAY

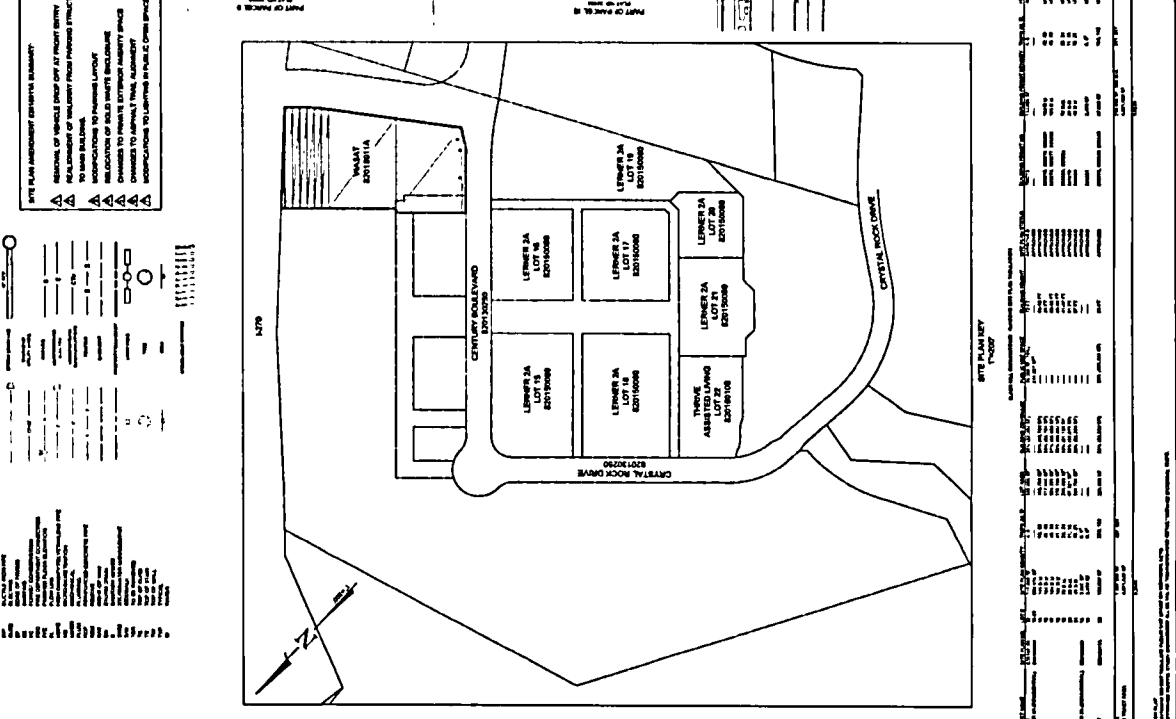
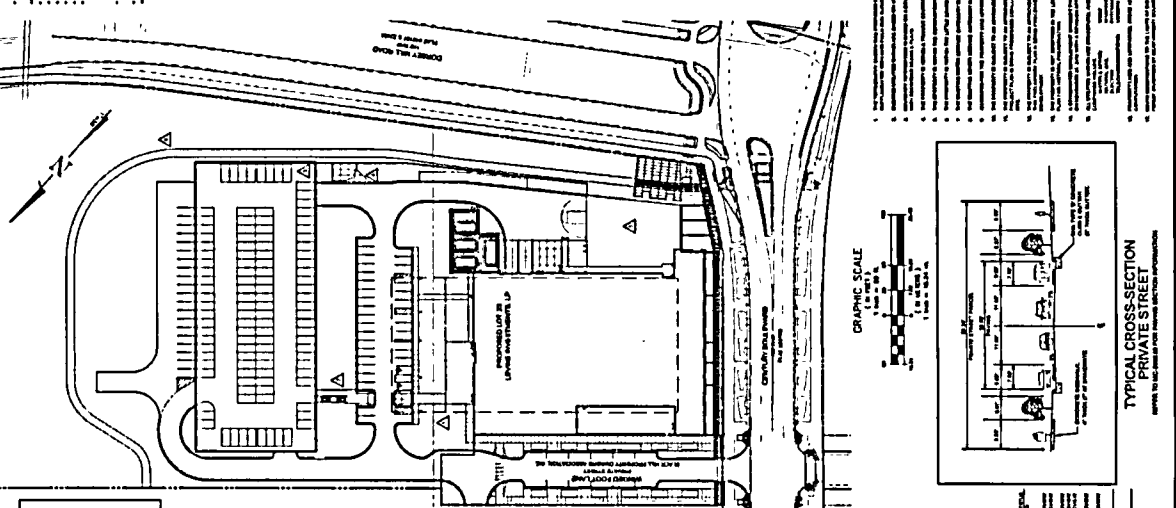
**LEGEND**  
 [Symbol] DRIVEWAY  
 [Symbol] SIDEWALK  
 [Symbol] BIKEWAY  
 [Symbol] PARKING SPACE  
 [Symbol] LANDSCAPE PLANTING  
 [Symbol] UTILITY  
 [Symbol] FENCE  
 [Symbol] WALL  
 [Symbol] CURB  
 [Symbol] DRIVEWAY

**LEGEND**  
 [Symbol] DRIVEWAY  
 [Symbol] SIDEWALK  
 [Symbol] BIKEWAY  
 [Symbol] PARKING SPACE  
 [Symbol] LANDSCAPE PLANTING  
 [Symbol] UTILITY  
 [Symbol] FENCE  
 [Symbol] WALL  
 [Symbol] CURB  
 [Symbol] DRIVEWAY

**LEGEND**  
 [Symbol] DRIVEWAY  
 [Symbol] SIDEWALK  
 [Symbol] BIKEWAY  
 [Symbol] PARKING SPACE  
 [Symbol] LANDSCAPE PLANTING  
 [Symbol] UTILITY  
 [Symbol] FENCE  
 [Symbol] WALL  
 [Symbol] CURB  
 [Symbol] DRIVEWAY

**TABLE OF LOCAL CODES**

SECTION	DESCRIPTION	REMARKS
1	...	...
2	...	...
3	...	...
4	...	...
5	...	...
6	...	...
7	...	...
8	...	...
9	...	...
10	...	...
11	...	...
12	...	...
13	...	...
14	...	...
15	...	...
16	...	...
17	...	...
18	...	...
19	...	...
20	...	...
21	...	...
22	...	...
23	...	...
24	...	...
25	...	...
26	...	...
27	...	...
28	...	...
29	...	...
30	...	...
31	...	...
32	...	...
33	...	...
34	...	...
35	...	...
36	...	...
37	...	...
38	...	...
39	...	...
40	...	...
41	...	...
42	...	...
43	...	...
44	...	...
45	...	...
46	...	...
47	...	...
48	...	...
49	...	...
50	...	...
51	...	...
52	...	...
53	...	...
54	...	...
55	...	...
56	...	...
57	...	...
58	...	...
59	...	...
60	...	...
61	...	...
62	...	...
63	...	...
64	...	...
65	...	...
66	...	...
67	...	...
68	...	...
69	...	...
70	...	...
71	...	...
72	...	...
73	...	...
74	...	...
75	...	...
76	...	...
77	...	...
78	...	...
79	...	...
80	...	...
81	...	...
82	...	...
83	...	...
84	...	...
85	...	...
86	...	...
87	...	...
88	...	...
89	...	...
90	...	...
91	...	...
92	...	...
93	...	...
94	...	...
95	...	...
96	...	...
97	...	...
98	...	...
99	...	...
100	...	...



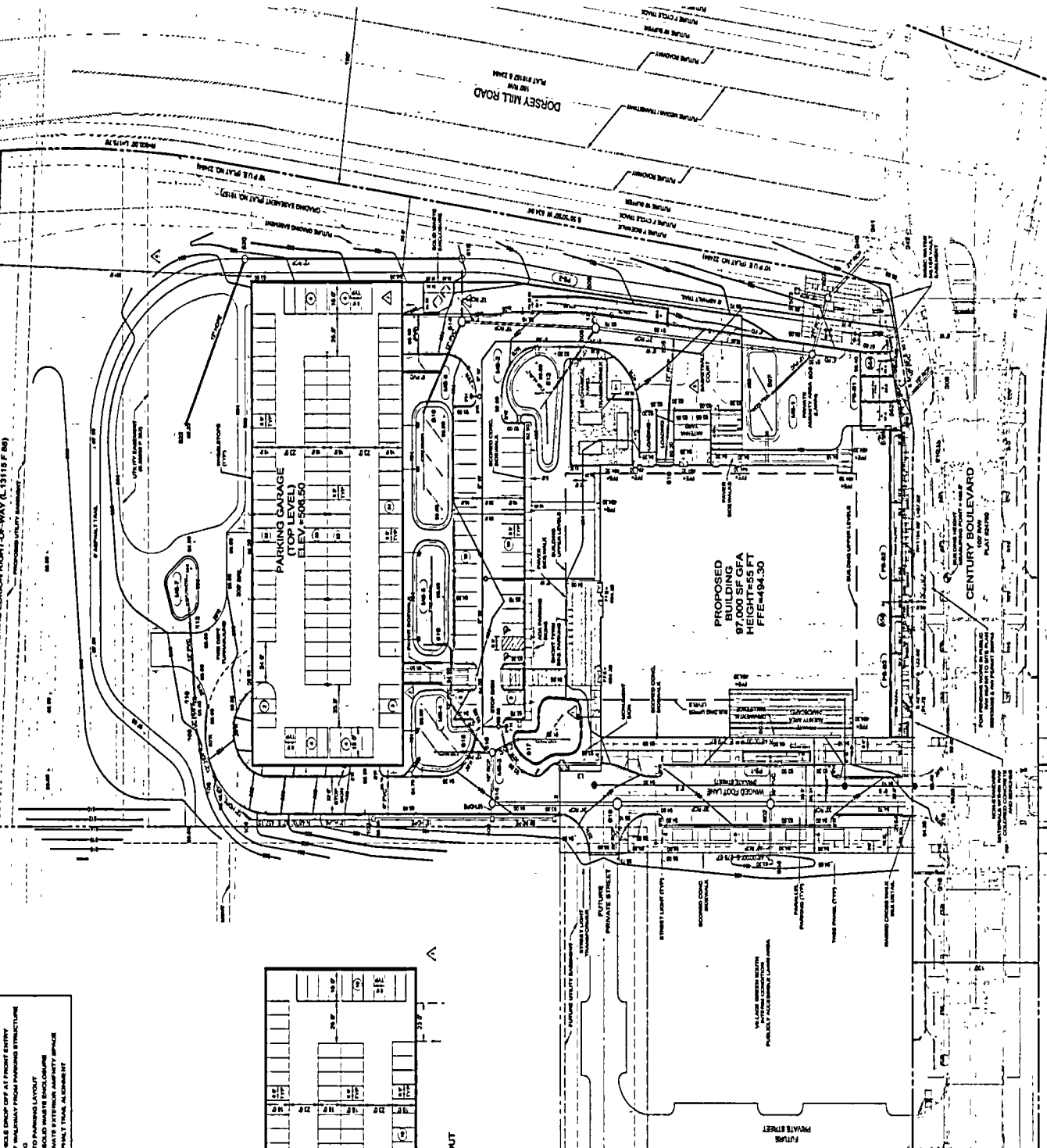
**GRAPHIC SCALE**  
 1" = 10' - 0"

**TYPICAL CROSS SECTION PRIVATE STREET**

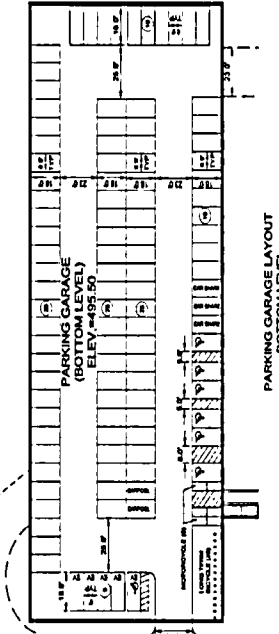
**GENERAL NOTES**

1. THIS SITE PLAN IS A PRELIMINARY DESIGN AND IS SUBJECT TO APPROVAL BY THE LOCAL JURISDICTION.
2. THE DEVELOPER SHALL BE RESPONSIBLE FOR OBTAINING ALL NECESSARY PERMITS AND APPROVALS.
3. THE DEVELOPER SHALL BE RESPONSIBLE FOR OBTAINING ALL NECESSARY UTILITIES INFORMATION.
4. THE DEVELOPER SHALL BE RESPONSIBLE FOR OBTAINING ALL NECESSARY SURVEYING INFORMATION.
5. THE DEVELOPER SHALL BE RESPONSIBLE FOR OBTAINING ALL NECESSARY ENVIRONMENTAL INFORMATION.
6. THE DEVELOPER SHALL BE RESPONSIBLE FOR OBTAINING ALL NECESSARY HISTORIC PRESERVATION INFORMATION.
7. THE DEVELOPER SHALL BE RESPONSIBLE FOR OBTAINING ALL NECESSARY TRANSPORTATION INFORMATION.
8. THE DEVELOPER SHALL BE RESPONSIBLE FOR OBTAINING ALL NECESSARY UTILITIES INFORMATION.
9. THE DEVELOPER SHALL BE RESPONSIBLE FOR OBTAINING ALL NECESSARY SURVEYING INFORMATION.
10. THE DEVELOPER SHALL BE RESPONSIBLE FOR OBTAINING ALL NECESSARY ENVIRONMENTAL INFORMATION.
11. THE DEVELOPER SHALL BE RESPONSIBLE FOR OBTAINING ALL NECESSARY HISTORIC PRESERVATION INFORMATION.
12. THE DEVELOPER SHALL BE RESPONSIBLE FOR OBTAINING ALL NECESSARY TRANSPORTATION INFORMATION.

PROPOSED UTILITY RIGHT-OF-WAY (L 13119 F 80)  
 PROPOSED UTILITY RIGHT-OF-WAY (L 13119 F 80)



- CHANGES TO THE SHEET INCLUDE:
- ▲ REMOVAL OF VEHICLE CRIMP OFF AT FRONT ENTRY
  - ▲ REVISION OF WALKWAY FROM PARKING STRUCTURE
  - ▲ NO CHANGE TO PARKING LAYOUT
  - ▲ NO CHANGE TO PARKING LAYOUT
  - ▲ RELOCATION OF SOLID WASTE ENCLOSURE
  - ▲ CHANGE TO PRIVATE EXTERIOR AMBULANCE SPACE
  - ▲ CHANGE TO AMBULANT TRAIL ALIGNMENT



- GENERAL NOTES:
- ALL WORK SHALL BE IN ACCORDANCE WITH THE LATEST EDITIONS OF THE IBC AND ALL APPLICABLE LOCAL ORDINANCES.
  - ALL WORK SHALL BE IN ACCORDANCE WITH THE LATEST EDITIONS OF THE IBC AND ALL APPLICABLE LOCAL ORDINANCES.
  - ALL WORK SHALL BE IN ACCORDANCE WITH THE LATEST EDITIONS OF THE IBC AND ALL APPLICABLE LOCAL ORDINANCES.
  - ALL WORK SHALL BE IN ACCORDANCE WITH THE LATEST EDITIONS OF THE IBC AND ALL APPLICABLE LOCAL ORDINANCES.
  - ALL WORK SHALL BE IN ACCORDANCE WITH THE LATEST EDITIONS OF THE IBC AND ALL APPLICABLE LOCAL ORDINANCES.

