

Appendix F

Concept Site Plan Sketches

- Alternate A: Permanent Road Diet
- Alternate A Rendering
- Alternate B: Trail Reorientation to Arlington Road Signal
- Alternate B Rendering
- Alternate C: Pedestrian Bridge
- Alternate C Rendering
- Concept “Ultimate” Site Plan

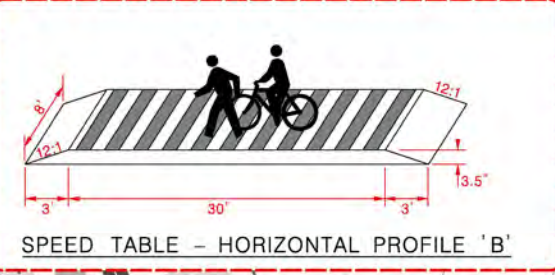
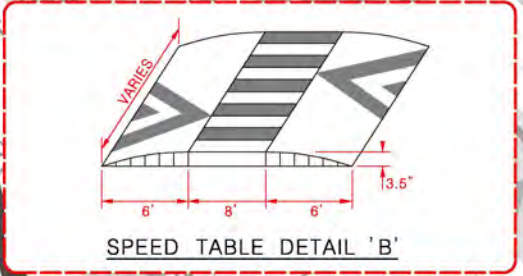
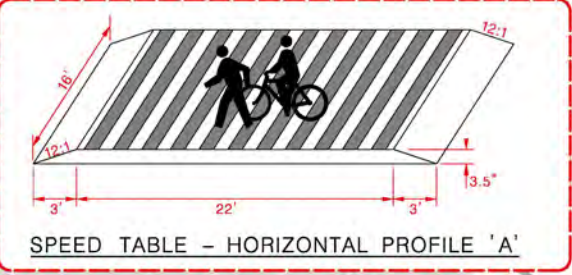
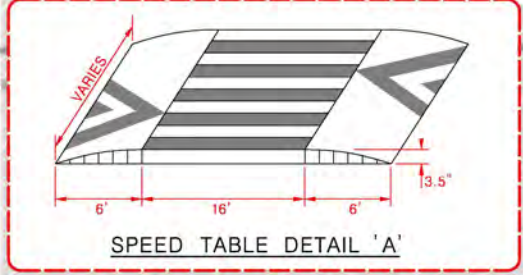
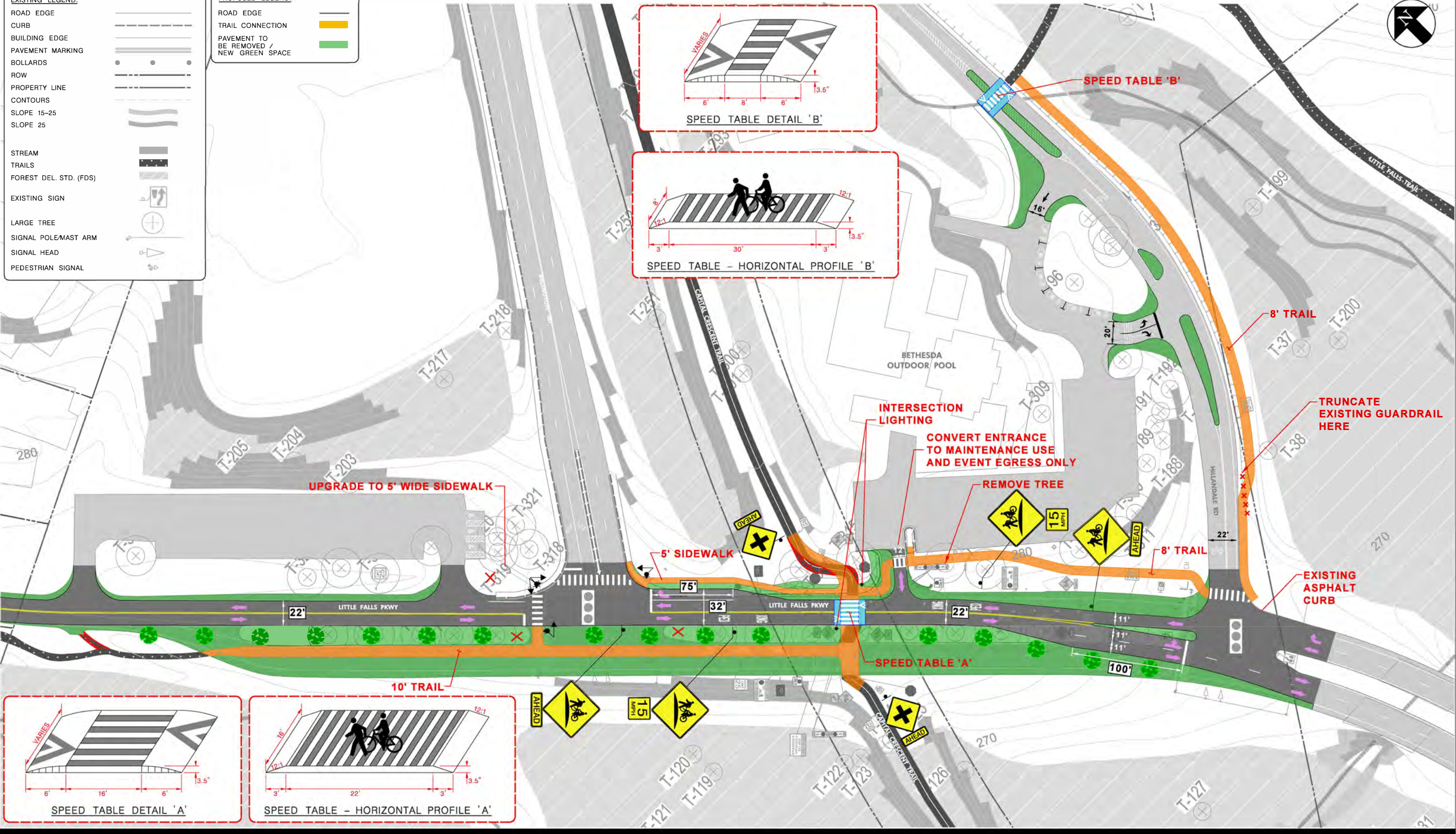
APPENDIX F CONCEPT SITE PLAN SKETCHES

EXISTING LEGEND:

- ROAD EDGE
- CURB
- BUILDING EDGE
- PAVEMENT MARKING
- BOLLARDS
- ROW
- PROPERTY LINE
- CONTOURS
- SLOPE 15-25
- SLOPE 25
- STREAM
- TRAILS
- FOREST DEL. STD. (FDS)
- EXISTING SIGN
- LARGE TREE
- SIGNAL POLE/MAST ARM
- SIGNAL HEAD
- PEDESTRIAN SIGNAL

PROPOSED LEGEND:

- ROAD EDGE
- TRAIL CONNECTION
- PAVEMENT TO BE REMOVED / NEW GREEN SPACE





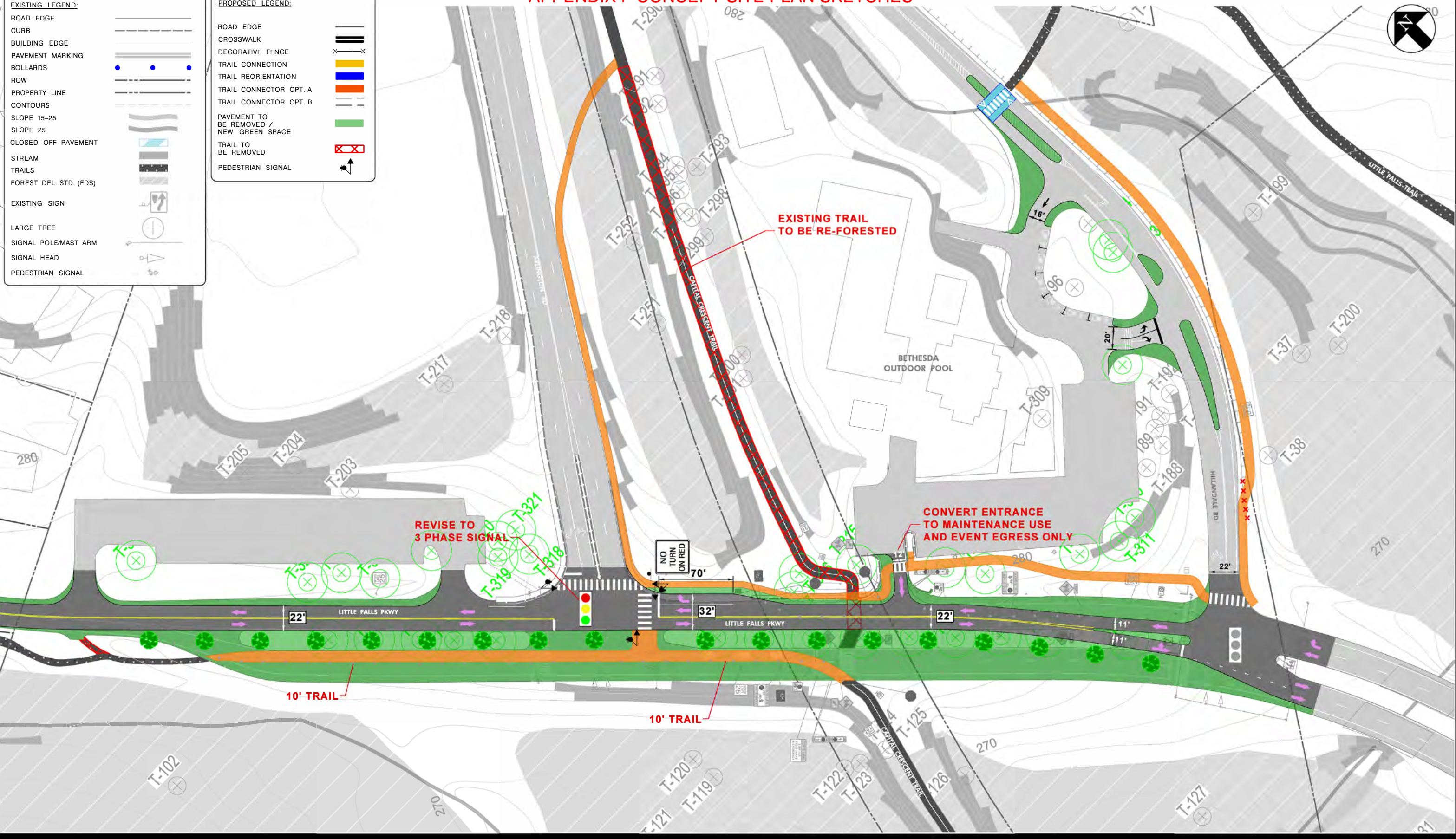
APPENDIX F CONCEPT SITE PLAN SKETCHES

EXISTING LEGEND:

ROAD EDGE	---
CURB	---
BUILDING EDGE	---
PAVEMENT MARKING	---
BOLLARDS	• • •
ROW	---
PROPERTY LINE	---
CONTOURS	---
SLOPE 15-25	---
SLOPE 25	---
CLOSED OFF PAVEMENT	---
STREAM	---
TRAILS	---
FOREST DEL. STD. (FDS)	---
EXISTING SIGN	---
LARGE TREE	⊕
SIGNAL POLE/MAST ARM	---
SIGNAL HEAD	---
PEDESTRIAN SIGNAL	---

PROPOSED LEGEND:

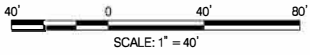
ROAD EDGE	---
CROSSWALK	---
DECORATIVE FENCE	x-x-x
TRAIL CONNECTION	---
TRAIL REORIENTATION	---
TRAIL CONNECTOR OPT. A	---
TRAIL CONNECTOR OPT. B	---
PAVEMENT TO BE REMOVED / NEW GREEN SPACE	---
TRAIL TO BE REMOVED	---
PEDESTRIAN SIGNAL	---



THE MARYLAND-NATIONAL CAPITAL
Park and Planning Commission

Little Falls Parkway at Capital Crescent Trail
Proposed Improvements

ALTERNATE B: TRAIL REORIENTATION TO ARLINGTON ROAD
TRAFFIC SIGNAL



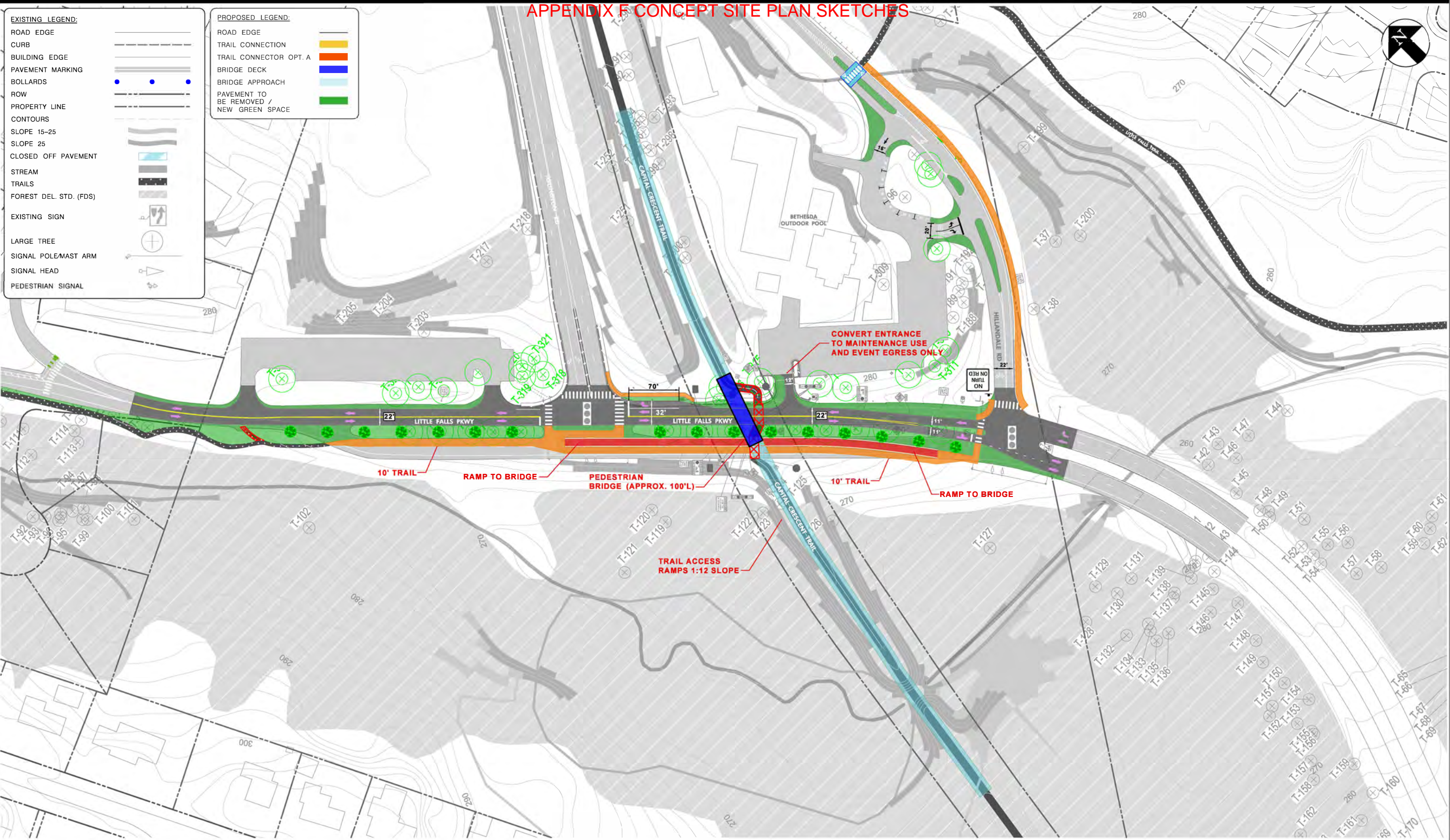
OPERATOR: keller - PLOTTED: Wednesday, March 20, 2019 AT 03:17 PM
FILE NAME: \2017\41 Capital Crescent Trail_MNCPPC_\$148\DWG\Microstation\3 Alternatives - Revised\PrintSheet_CapCrescentPkwy_AltB.dgn



APPENDIX F CONCEPT SITE PLAN SKETCHES

- EXISTING LEGEND:
- ROAD EDGE
 - CURB
 - BUILDING EDGE
 - PAVEMENT MARKING
 - BOLLARDS
 - ROW
 - PROPERTY LINE
 - CONTOURS
 - SLOPE 15-25
 - SLOPE 25
 - CLOSED OFF PAVEMENT
 - STREAM
 - TRAILS
 - FOREST DEL. STD. (FDS)
 - EXISTING SIGN
 - LARGE TREE
 - SIGNAL POLE/MAST ARM
 - SIGNAL HEAD
 - PEDESTRIAN SIGNAL

- PROPOSED LEGEND:
- ROAD EDGE
 - TRAIL CONNECTION
 - TRAIL CONNECTOR OPT. A
 - BRIDGE DECK
 - BRIDGE APPROACH
 - PAVEMENT TO BE REMOVED / NEW GREEN SPACE



OPERATOR: Keller - PLOTTED: Wednesday, March 20, 2019 AT 03:17 PM
FILE NAME: \\2017\\41 Capital Crescent Trail_MNCPCC_\$148\\DWG\\Microstation\\3 Alternatives - Revised\\PrintSheet_CapCrescentPkyw_Altis.dgn

APPENDIX F CONCEPT SITE PLAN SKETCHES



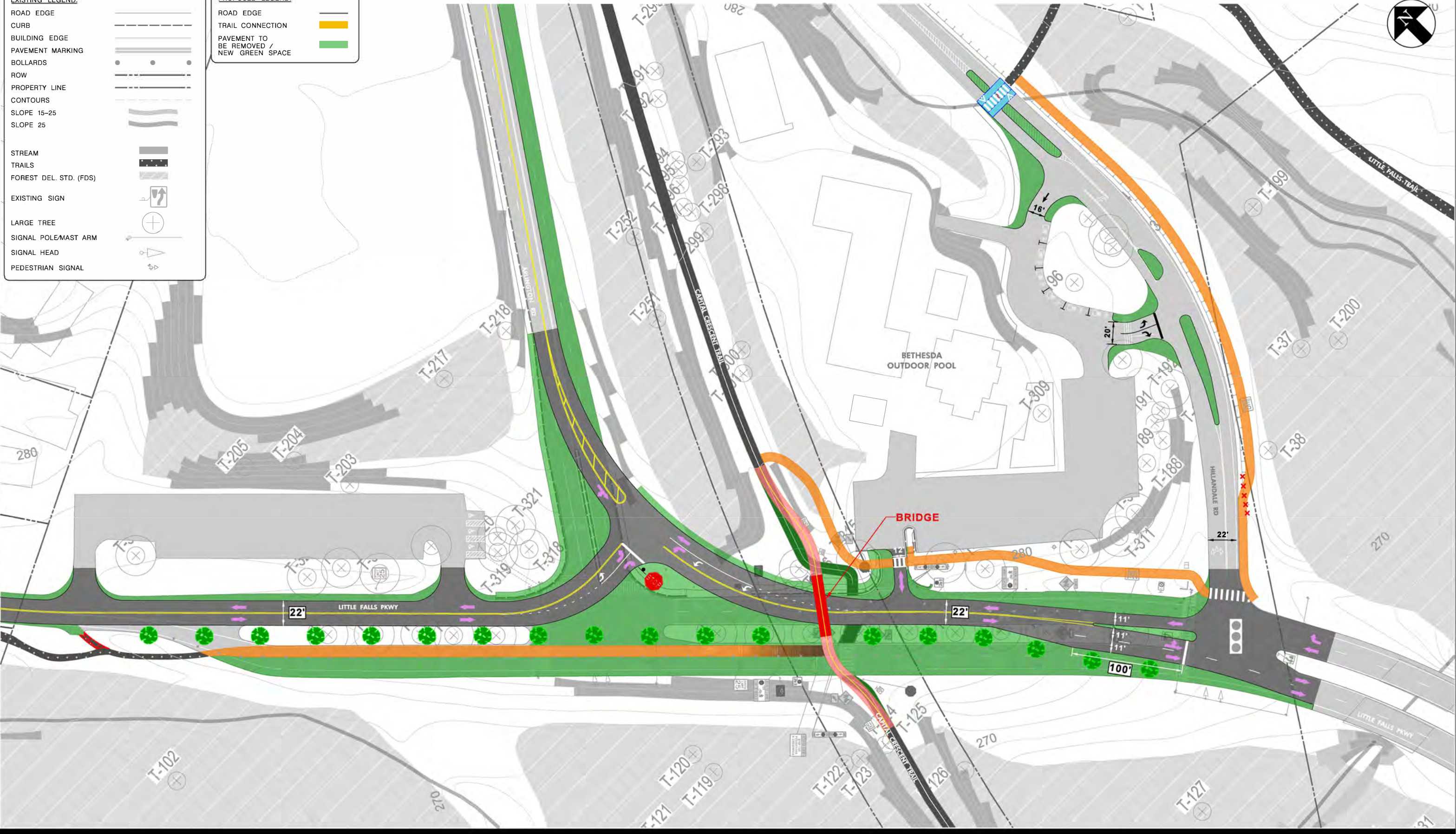
APPENDIX F CONCEPT SITE PLAN SKETCHES

EXISTING LEGEND:

- ROAD EDGE
- CURB
- BUILDING EDGE
- PAVEMENT MARKING
- BOLLARDS
- ROW
- PROPERTY LINE
- CONTOURS
- SLOPE 15-25
- SLOPE 25
- STREAM
- TRAILS
- FOREST DEL. STD. (FDS)
- EXISTING SIGN
- LARGE TREE
- SIGNAL POLE/MAST ARM
- SIGNAL HEAD
- PEDESTRIAN SIGNAL

PROPOSED LEGEND:

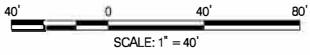
- ROAD EDGE
- TRAIL CONNECTION
- PAVEMENT TO BE REMOVED / NEW GREEN SPACE



THE MARYLAND-NATIONAL CAPITAL
Park and Planning Commission

Little Falls Parkway at Capital Crescent Trail
Proposed Improvements

CONCEPT "ULTIMATE" SITE PLAN
CCTC PROPOSED REALIGNMENT LFP/ARLINGTON ROAD



OPERATOR: keller - PLOTTED: Tuesday, March 19, 2019 AT 08:09 AM
FILE NAME: \\2017\\41 Capital Crescent Trail_MNCP_CCTC\\All Files Preferred AIT\\New Concept\\PrintSheet_NewConcept_CCTC.dgn