



Burial Sites Inventory and Guidelines



Brian Crane, Archaeologist, Historic Preservation, brian.crane@montgomeryplanning.org, 301-563-3402



Rebecca Ballo, Supervisor, Historic Preservation, rebecca.ballo@montgomeryplanning.org, 301-563-3404



Jason Sartori, Acting Chief, Functional Planning and Policy, jason.sartori@montgomeryplanning.org, 301-495-2172



Robert Kronenberg, Deputy Director, robert.kronenberg@montgomeryplanning.org, 301-495-2187



Tanya Stern, Deputy Director, tanya.stern@montgomeryplanning.org, 301-495-4508

Completed: 5/07/2019

The Historic Preservation Program will present the final Montgomery County Burial Sites Inventory and final Montgomery County Planning Board Guidelines for Burial Sites to the Planning Board for consideration and Final Adoption.

Overview

Montgomery County recognizes the significance of cemetery and burial sites to the community. In 2017, the County Council passed two laws to help preserve and protect these unique and fragile resources. Section 33A-17 of the Montgomery County Code requires the Montgomery County Planning Board to maintain an inventory of burial sites in the county and Montgomery County Ordinance 18-31 (2017) requires that all human burial sites be preserved and protected as a condition of the preliminary plan of subdivision review and approval process. Preservation of these unique archaeological resources will further protect the cultural heritage of Montgomery County.

This presentation will present modifications made to the DRAFT documents in response to Planning Board comments made on February 21 and input from stakeholders and the general public:

- The Planning Board's Guidelines for Burial Sites (and related Appendices A-D)
- The Planning Board's Burial Site Inventory

Background

The Planning Board was briefed on the Montgomery County Burial Sites Inventory and Guidelines on February 21, 2019. That briefing described how formal efforts to inventory cemeteries in Montgomery County began in 2004 sponsored by Peerless Rockville, Historic Takoma, Inc., and the Coalition to Protect Maryland Burial Sites supported by a grant awarded by the Montgomery County Historic Preservation Commission (HPC). Subsequent phases of the volunteer effort continued through 2009, resulting in a final written report including description forms for each identified cemetery, photographs, and a geographical information system (GIS) database of the recorded locations. The Planning Department has made this data available to the public via the [MCAtlas webportal](#).

In 2018, Montgomery Preservation, Inc., with the support of a grant from Heritage Montgomery, began an intensive volunteer program called the Montgomery County Cemetery Inventory Revisited. The goal of the project was to revisit the sites identified through 2009, to improve the locational data with cell-phone global positioning system (GPS) readings, current conditions, photographs, and additional descriptive information. Dozens of volunteers physically revisited all of the 266 cemeteries identified between 2004 and 2010, and conducted historical research to identify more burial sites, bringing the total to 322. Montgomery Preservation developed survey forms and protocols, trained volunteers in recording phone GPS coordinates, taking standardized photographs and completing a detailed description form. Within a span of less than 12 months, 266 of the 322 cemetery sites were visited, including 52 sites newly identified since 2010.

The results of the Montgomery County Cemetery Inventory Revisited project were delivered to the Planning Department in December 2018. These data were reviewed by Historic Preservation staff for accuracy and sufficiency, and some attribute data (such as personal information about project volunteers) was redacted.

Outreach

The Planning Department notified State Department of Assessments and Taxation enumerated property owners in writing about the inclusion of a site on their property on the inventory. Planning Department staff held three public meetings in March and April to help property owners and the public understand why the inventory was created, and what their rights and responsibilities are under state and local laws. These meetings were held in Silver Spring, Germantown, and Olney on weekday evenings and one Saturday afternoon. The Inventory and associated information has been made available through printed brochures and the inventory website, including an interactive map application.

In addition to public meetings, the Historic Preservation Office consulted with multiple organizational stakeholders regarding the Inventory and Guidelines. Organizations consulted included: the Maryland Historical Trust, the National Park Service, National Capital Region Archaeology Program, the Maryland State Highway Administration, the Maryland Commission on Indian Affairs, the Maryland Commission on African American History, the Council for Maryland Archaeology, the Montgomery County Department of General Services, Montgomery Preservation, Inc., and NAIOP.

Revisions Made to the Burial Sites Guidelines

In accordance with the revised County Code Chapter 50, “Subdivisions of Land”, the Planning Board is required to establish and amend over time, as needed, Guidelines for Burial Sites. These Guidelines will accomplish five stated goals that are intended to guide applicants, staff, the public, and the Planning Board during the preliminary plan submission and review process. The goals of the Guidelines are as follows:

1. Establish procedures for making the inventory available to the public electronically;
2. Establish procedures for additions or exclusions to the burial site inventory;

3. Establish procedures and policies that will help adequately establish the location of burial site(s);
4. Establish standards sufficient to ensure adequate preservation of burial site(s); and,
5. Establish standards sufficient to ensure adequate maintenance of burial site(s).

Many of the practices laid out in these Guidelines specify methods of archaeological investigation and survey. The portion of the Guidelines relating to archaeological investigations and report preparation are based on the Maryland Historic Trust (MHT) publication, *The Standards and Guidelines for Archaeological Investigations in Maryland* (Shaffer and Cole, 1994), *The Secretary of the Interior's Standards for Archaeology and Historic Preservation*, as well as accepted practices for archaeology in the Mid-Atlantic Region. All archaeological investigations, data collecting, and reporting done to achieve compliance with these Guidelines should conform to the MHT Standards and Guidelines.

These Guidelines include information about maintaining the inventory, informing the public, and providing guidelines for complying with the County ordinance regarding burial sites in the Preliminary Plan of Parcel Subdivision Review Process. The Guidelines include four appendices with additional information to help the public:

Appendix A: Guidelines for Cemetery Investigations

Appendix B: Standards for Maintenance of Burial Sites

Appendix C: Definitions

Appendix D: Preliminary Plan Review Process

Some revisions to the draft guidelines were made in response to comments and questions raised by the Planning Board during the February 21st briefing and in consultation with stakeholders. One question concerned Planning Board approval for relocation of a cemetery where descendants could not be identified, or if identified, did not agree on an appropriate site for relocation of remains. Sections of the text in the guidelines regarding relocation were revised to clarify that the wishes of descendants would be considered if known. Text was added stating:

The Planning Board may approve the relocation proposal or further condition the removal as warranted by the Board. The applicant will be responsible for meeting the requirements of the State's Attorney for Montgomery County following Planning Board approval.

A concern was raised about how the inventory and guidelines deal with potential crime scenes. New language was inserted stating that the guidelines are not intended to apply to crime scenes. The reader is advised to contact Montgomery County police if unanticipated human remains are found. If police investigators determine that it is not a crime scene, then the guidelines would apply.

The Planning Board asked how the guidelines apply to non-preliminary plan reviews. Section II.C.6 of the revised Guidelines states that the guidelines are applicable to all projects subject to

Planning Department Review. New text was added addressing building permits or other projects not subject to Planning Board review stating that in such cases the guidelines were not mandatory, however the guidelines represent best practices for preserving and maintaining cemetery sites.

In response to consultation with the Maryland Commission on Indian Affairs (MCIA), language was added to the guidelines requiring that protocols developed by the MCIA for the respectful handling of human remains be followed in the event that Native American burials are encountered.

Finally, Appendix D of the Guidelines (Preliminary Plan Review Process) has been rendered into an info-graphic format to make the information more accessible.

Following the delivery of notification letters, 38 property owners or representatives contacted the Historic Preservation Office in writing or by phone asking questions about the inventory and guidelines. Some property owners offered additional information clarifying the location or other particulars regarding cemetery sites on their land. Based on this feedback and continuing research and review of the data, some revisions to the inventory were made. A table of the changes made are included in Attachment C.

Burial Sites Inventory and Revisions

A burial site is defined in the ordinances as the “physical location where human remains were buried in the earth or entombed in mausoleum or columbarium. A burial site includes a cemetery, but does not include the sprinkling of ashes from cremated remains.” The Burial Site Inventory is the list of burial sites officially adopted by the Planning Board, pursuant to Section 33A-17 of the Montgomery County Code (Planning Procedures). It is maintained and updated as needed by the Planning Department’s Historic Preservation Office and consists of a GIS data layer and associated documentation. The inventory and preservation of these unique archaeological resources will further protect the cultural heritage of Montgomery County.

The confidence and precision of burial sites in the inventory varies. Some sites are well documented, or clearly visible on the surface today, and their location was confirmed through field observation. Other burial grounds are known through oral or archival history sources, but the burials have been removed, or the exact location is unknown. Sites in the inventory are divided into two broad categories:

- Known sites confirmed in the field or through historical research
- Approximate Sites, exact location and condition unknown

Staff may redact some locational data consistent with the provisions of Montgomery County Code 18-31 if there is reason to believe the site is at risk for damage from vandalism. Locations considered sensitive or at risk will be represented by the boundaries of the lot within which it is located, but the location within the lot will not be displayed publicly.

Recommendation

Staff recommends that the Planning Board **ADOPT** the Final Burial Sites Inventory and Guidelines.

ATTACHMENTS:

Attachment A: Montgomery County Planning Board Guidelines for Burial Sites

Attachment B: Montgomery County Burial Sites Inventory

Attachment C: Burial Sites Inventory Change Log

Attachment A: Burial Sites Guidelines

Montgomery County Planning Board Guidelines for Burial Sites

Background

Cemeteries are significant and important cultural resources in Montgomery County. In 2017, the County Council passed two laws to help preserve and protect these unique and fragile resources. Section 33A-17 of the Montgomery County Code requires the Montgomery County Planning Board to maintain an inventory of burial sites in the county and Montgomery County Ordinance 18-31 (2017) requires that all human burial sites be preserved and protected as a condition of the preliminary plan of subdivision review and approval process. Preservation of these unique archaeological resources will further protect the cultural heritage of Montgomery County. In accordance with the revised County Code Chapter 50, “Subdivisions of Land”, the Planning Board is required to establish and amend over time, as needed, Guidelines for Burial Sites. These Guidelines will accomplish five stated goals that are intended to guide applicants, staff, and the Planning Board during the preliminary plan submission and review process. The goals of the Guidelines are as follows:

1. Establish procedures for making the inventory available to the public electronically;
2. Establish procedures for additions or exclusions to the burial site inventory;
3. Establish procedures and policies that will help adequately establish the location of burial site(s);
4. Establish standards sufficient to ensure adequate preservation of burial site(s); and,
5. Establish standards sufficient to ensure adequate maintenance of burial site(s).

Many of the practices laid out in these Guidelines specify methods of archaeological investigation and survey. The portion of the Guidelines relating to archaeological investigations and report preparation are based on the Maryland Historic Trust (MHT) publication, The Standards and Guidelines for Archaeological Investigations in Maryland (Shaffer and Cole, 1994), The Secretary of the Interior’s Standards for Archaeology and Historic Preservation, as well as accepted practices for archaeology in the Mid-Atlantic Region. All archaeological investigations, data collecting, and reporting done to achieve compliance with these Guidelines should conform to the MHT Standards and Guidelines.

Formal efforts to inventory cemeteries in Montgomery County began in 2004 (supported by a series of small grants awarded by the Montgomery County Historic Preservation Commission (HPC) and were sponsored by Peerless Rockville with financial assistance from Historic Takoma, Inc., and the Coalition to Protect Maryland Burial Sites. Subsequent phases of the volunteer effort were undertaken from 2004 to 2009 and resulted in a final written report dated 2010. This 2010 report included description forms for each identified cemetery, photographs, a geographical information system (GIS) database of the recorded locations, and summary recommendations. The Planning Department has made these data available to the public via the [MCAtlas webportal](#).

In 2018, Montgomery Preservation, Inc., with the support of a mini grant from Heritage Montgomery, began an intensive volunteer program to revisit the sites identified in the original Cemetery Inventory to improve the locational data with cell-phone global positioning system

(GPS) readings, current conditions, photographs, and additional descriptive information. Some cemetery locations suggested by historical research, but not found in the field from 2004 to 2009, were successfully located while a few were removed from the inventory. Additional cemetery sites identified through new historical research were added to the inventory. The results of the Montgomery County Cemetery Inventory Revisited project were delivered to the Planning Department in December 2018 and included an Excel spreadsheet with all the data from the description sheets (including coordinates in latitude and longitude), as well as electronic copies of the survey forms and photographs and other supporting materials. These data were reviewed by Historic Preservation staff for accuracy and sufficiency, and some attribute data (such as personal information about project volunteers) were redacted.

These Guidelines include information about maintaining the inventory, informing the public, and providing guidelines for complying with the County ordinance regarding burial sites in the Preliminary Plan of Parcel Subdivision Review Process. The Guidelines include four appendices with additional information to help the public:

- Appendix A: Guidelines for Cemetery Investigations
- Appendix B: Standards for Maintenance of Burial Sites
- Appendix C: Definitions
- Appendix D: Preliminary Plan Review Process

I. Burial Sites Inventory

The Burial Sites Inventory is the list of Burial Sites officially adopted by the Planning Board pursuant to Section 33A-17 of the Montgomery County Code. The Burial Site Inventory shall be maintained and updated as needed by the Planning Board or its designee. The inventory will consist of a GIS data layer, and associated documentation. Staff will develop and maintain metadata consistent with Federal Geographic Data Committee standards to accompany the GIS layer. This Inventory is not static, and it is intended that the list will change and evolve as new information is received by the Planning Board.

Sites in the inventory are divided into two broad categories:

- Known sites confirmed in the field or through historical research
These sites have well documented locations. They are clearly visible on the surface today, and their location was confirmed through field observation, or historical information (such as maps and photographs) shows their location clearly.
- Approximate Sites, exact location and condition not yet determined
Sites whose locations are not yet precisely known. Physical evidence has not yet been found on the surface, and additional research and fieldwork would be necessary to verify the location. Historical sources provide an approximate location. The source for the location shown and whether the location is known or approximate will be included in the inventory.

A. Electronic Availability

The Burial Site Inventory GIS and attribute data will be made available to the public via the Montgomery County Planning Department Website. Planning Department Staff may redact some

locational data consistent with the provisions of Montgomery County Code 18-31 if there is reason to believe the site is at risk for damage from vandalism. Locations considered sensitive or at risk will be represented by the boundaries of the ~~lot~~ parcel of land within which it is located, but the location within the lot will not be displayed publicly.

B. Procedures for Updating the Inventory

Future research may identify new locations, physically confirm suspected locations, or provide new information about existing inventory records. Further investigations may also show that some locations are mapped incorrectly, or that suspected cemetery sites do not survive, or were misidentified as burial sites. This research may include oral history, archival research, and non-invasive archaeological survey. Non-invasive archaeological survey includes techniques such as pedestrian survey, ground penetrating radar and other geophysical techniques that do not disturb the ground.

1. The Planning Board's designee will update the Burial Sites Inventory, including additions, revisions, and exclusions/deletions, as new information becomes available so that it reflects the most current and accurate information.
2. Additions, revisions, and exclusions/deletions shall be presented to the Planning Board annually at a briefing.
3. The Planning Board designee will notify State Department of Assessments and Taxation enumerated property owners in writing via certified letter 30 days prior to including new or updated locations in the inventory, and 30 days prior to removing a property from the inventory. If the property owner believes the precise site location is sensitive, the publicly available location will only show the lot boundaries containing the site.

C. Public Outreach and Education Program.

Planning Department staff will hold public meetings and educational events to help property owners and the public understand why the inventory was created, and what their rights and responsibilities are under state and local laws. This information will be made available through printed brochures and the inventory website.

II. Consideration of Burial Sites During ~~Parcel~~ Subdivision Review

Applicants are strongly encouraged to contact the Compliance Review Archaeologist early when preparing their submission documents. For sites where the precise burial location is not yet determined, early discussions on the appropriate scope of work are strongly encouraged.

A. Preliminary Plan Application Requirements for Sites on the Inventory ([18-31](#))

At the time an applicant files Natural Resources Inventory and Forest Stand Delineation (NRI/FSD) documentation, the applicant shall:

1. Adequately establish the known location and boundary of any burial site for which there is actual or constructive notice or that is included in the Montgomery County Burial Sites Inventory.

2. Stake the suspected location of the burial site on the Subject Property.
3. File an inventory of existing cemetery elements (including, but not limited to walls, gates, landscape features and tombstones, including a record of their inscriptions) and their conditions.
4. The proposed cemetery boundaries and the inventory of features shall be submitted in a report separate from the NRI/FSD. The Planning Department's Compliance Review Archaeologist will review proposed boundaries of a burial site and determine whether additional burials are possible outside those boundaries or whether any other known or suspected cemetery exists within or immediately adjacent to the proposed subdivision.

B. Preliminary Plan Application Review

1. The cemetery must be shown on the preliminary plan, and any subsequent amendments to the plan.
2. If a cemetery or burial ground is present, the Planning Department will include this information in comments to the subdivision plan along with applicable requirements for conducting any needed technical investigations to verify or adjust the proposed ~~delineation~~delineation of the cemetery boundary.
3. To ensure the future protection of cemetery plots in the subdivision process, applicants shall conduct phased investigations in consultation with Historic Preservation staff and the Compliance Review Archaeologist that may include, but are not limited to, historical research, oral history, geophysical surveys, and archaeological testing. Appendix A provides standards and guidelines for conducting investigations designed to establish boundaries and grave locations, and to record key cemetery features.
4. If any graves, human remains, or grave-associated artifacts are identified by archaeological investigations outside the preliminary boundary of the cemetery as shown on documents prepared at the NRI/FSD stage, the applicant must either revise the cemetery parcel boundary as needed to include them or request the Planning Board's permission and authorization of the State's Attorney for Montgomery County to relocate them for interment within the proposed cemetery parcel boundary, or some other location acceptable to the Board.
5. In the event human remains potentially associated with Native Americans are found, the applicant must consult with the Maryland Commission on Indian Affairs (MCIA), and follow protocols established by MCIA for the recording and handling of human remains.

C. Final Cemetery Parcel Approval

1. Prior to approval of the Preliminary Plan by the Planning Board, all necessary archeological investigations shall be completed and approved by the Compliance Review Archaeologist to finalize the location and size of the burial site and identify any additional resources on the Subject Property related to the burial site.

2. The Applicant must stake/survey the final location of the burial site on the subject property and show the final location of the burial site on the Preliminary Plan documents.
 - a. If a new parcel boundary is created through Preliminary Plan approval, the final parcel boundary for the cemetery shall fully encompass the burial site as determined by any archaeological or historical investigations.
 - b. If the parcel boundaries remain unchanged through Preliminary Plan approval, the location of the burial site must still be shown on the preliminary plan and final record plat.
3. The Applicant must submit a final resource inventory of existing and suspected burial site elements, and the final technical report for archaeological investigations conducted to identify potential grave locations and cemetery boundaries, consistent with the requirements of Chapter 50. If the full report is not completed pending forensic/osteological or other detailed artifact analysis, a management summary of field results that is reviewed and approved by the Compliance Review Archaeologist must be submitted. A final technical report must be completed and approved by the Compliance Review Archaeologist prior to issuance of the first land disturbance permit.
4. Prior to approval of a preliminary plan, the ~~applicant~~Applicant shall develop with Staff a long-term maintenance program for maintaining the burial site and develop a process for protecting the burial site during future construction activities per Section III B (below).
5. Upon approval of a preliminary plan of subdivision, any cemetery located in accordance with these Guidelines which does not meet the regulations of the zone in which it is located shall be deemed to be a certified nonconforming use unless otherwise specified by the Planning Board.
6. For development sites that have an existing recorded lot or subdivision approval, and need to go through a Sketch or Site Plan review, the same standards for inventory, review, protection and maintenance apply.

III. Standards for Preservation of Burial Sites:

- A. The cemetery must be protected by arrangements sufficient to assure the Planning Board of its future maintenance and protection. Specific guidelines for cemetery preservation can be found in Appendix B.
- B. The long-term maintenance and protection program must provide for the protection of the site during all phases of construction work for the entire project, the phase of construction adjacent to the cemetery parcel, as well as the perpetual maintenance of the cemetery, including all grave markers, fencing, statuary, related landscaping, and any other cemetery elements identified during the submission process. These arrangements must ensure that stones or markers are in their original location. If markers are not in their original location, are leaning, or are toppled, the applicant will propose a plan to reset them in coordination with the Compliance Review Archaeologist. The Archaeologist must agree to the sufficiency of these plans prior to

Planning Board approval of a site plan. Covenants, easements, and/or other agreements to maintain and protect the burial site(s) may include but is not limited to, a determination of the following:

1. Current and proposed property ownership;
2. Responsibility for maintenance;
3. A maintenance plan, and schedule;
4. Provisions for granting access for persons in interest consistent with Maryland State Law (Real Property Section 14-121 Annotated Code of Maryland); and
5. Any other specifications deemed necessary by the Planning Board.

C. The program must be detailed in a plan document for review and approval by the Compliance Review Archaeologist and the comment by the MHT.

IV. Burial Sites Approved for Relocation by the Planning Board

A. Preservation in place is the preferred treatment for burial sites. Burial sites are important cultural, historical, and archaeological resources whose integrity of setting and location shall remain largely undisturbed. The Planning Board may approve the relocation of burial sites as part of a preliminary plan of subdivision, if the conditions of Chapter 50 [Section 4.3.M.4](#) Montgomery County Code and applicable state law have been satisfied. Should burial sites be approved for relocation, an appropriate standard of archaeological investigations must be completed by the applicant to provide assurance that all the graves have been located and removed. The removal of a burial site shall require the applicant to produce a detailed data recovery and relocation plan: ~~This plan shall detail~~ describing:

1. The methods that will be used to locate all graves at the site;
2. A plan for conducting public notice and obtaining the authorization of the State's Attorney required by law;
3. The methods for controlled excavation of each grave site by professional archaeologists;
4. Provisions as appropriate for the transport and study of recovered human remains by a qualified forensic anthropologist;
5. Provisions for the safe and respectful storage of any human remains and associated objects pending reinterment;
6. A specific plan for reinterment, so chosen after consultation with ~~at a location agreeable to descendants, the Planning Board (if known),~~ and persons in interest as defined by Maryland State law;
7. In the event human remains potentially associated with Native Americans are to be relocated, the applicant must consult with the Maryland Commission on Indian Affairs (MCIA), and follow protocols established by MCIA for the recording, handling and reinterment of human remains.
8. Provisions for appropriate analysis, study, and curation of any artifacts recovered during excavation; and,

89. Completion of a detailed technical report that presents the history of the site, the methods employed in the study and excavation, detailed discussion and analysis of the individual graves, and a conclusion.

The Planning Board may approve the relocation proposal or further condition the removal as warranted by the Board. The applicant will be responsible for meeting the requirements of the State's Attorney for Montgomery County following Planning Board approval.

B. The data recovery plan and technical report must be reviewed and approved by the Compliance Review Archaeologist prior to submission of the first record plat. The Compliance Review Archaeologist must further review all reinterments, preservation plans, record plat submittals, easement documents, funds, and any interpretive elements proposed for the site prior to issuance of the first building permit for the development. Following burial site relocation, the Compliance Review Archaeologist will update the Burial Sites Inventory as appropriate.

V. Applicability

The Guidelines in II – IV above are mandatory for projects submitted to the Planning Board. Other situations may arise in which known or suspected burial sites may be affected by development, or where unanticipated human remains are encountered. This section addresses how these Guidelines may apply in such situations. Property owners should contact the Historic Preservation Office for technical advice and assistance for any of the circumstances described below.

A. Crime Scenes

These Guidelines do not apply to the investigation of a crime scene. If unanticipated human remains are encountered, those who find the remains should contact Montgomery County police. If police investigators determine that the find is not related to a crime, these Guidelines describe applicable best practices a property owner may wish to follow for determining the extent of burials on their land, guidelines for disposition of remains, and preservation of the burial site. Note that if the unanticipated remains are not part of a crime scene, state laws prohibiting the willful damage of the grave or relocation without the authorization of the State's Attorney for the County would apply.

B. Development Projects Not Requiring Preliminary Plan Applications.

While not mandatory for projects not including Planning Board approval of a subdivision, these Guidelines would be applied to other regulatory applications and offer best practices for delineating cemetery boundaries, handling of human remains, and burial site preservation and maintenance.

Appendix A: Guidelines for Cemetery Investigations in Montgomery County

It is sometimes the case that there may be graves that either are not marked, are not marked in a way that is obvious to a casual observer or were marked by wooden markers or field stones that have not survived in place. Some burial grounds may have fences, plantings or other features that define the cemetery's boundary, but many others do not, or if they have such features, they may have been added long after the first interments and may not accurately reflect the location of all graves. Graves may be present outside cemetery fence lines or areas where clearly marked graves are present.

I Archaeological Investigations to Determine Cemetery Boundaries

A. **Staff Consultation:** Prior to initiating investigations to inventory cemetery features or establish boundaries, applicants should meet with Historic Preservation staff to review what is already known about the location, and discuss appropriate methodologies for any needed studies. If consultants are to be engaged to complete investigations, the scope of work must be reviewed by the Compliance Review Archaeologist in the Historic Preservation Office prior to initiating work.

B. **Historical Research:** Historical documents, such as maps, aerial photographs, deeds, wills, or family histories, may contain information on the location of grave sites. Work to identify cemetery boundaries should begin with a thorough review of previous historical research on the site and existing documents.

C. **Oral History:** Descendants, members of the county's long-established communities and local preservation groups are often knowledgeable about the locations of former house sites and their associated burial grounds. The locations of burial grounds were often passed down orally within rural communities. Interviewing persons with knowledge about a burial ground can help establish how it may have changed over time; whether there were additional grave markers that no longer survive, or whether any graves or grave stones may have been removed or relocated. It is recommended that interviews with descendants follow the Principles and Best Practices for Oral History developed by the Oral History Association (<http://www.oralhistory.org/about/principles-and-practices-revised-2009/>).

D. Geophysical and Other Non-Invasive Investigations: Geophysical investigations, such as Ground Penetrating Radar (GPR), soil resistivity, magnetometer, soil chemistry, and other techniques such as tile probe surveys or use of human remains detection dogs can help detect the presence of grave shafts or other buried cultural features not marked or visible on the surface without disturbing the ground. Project applicants may propose a wide variety of remote sensing techniques provided their use can be justified for the particular context. A combination of multiple approaches may yield the most reliable results. Non-intrusive survey techniques are most effective when more than one contrasting method is used (e.g. GPR and magnetometer). This helps control for potential gaps in the survey data arising from local conditions such as soil composition, moisture content, underground utilities, and past natural or non-grave related human disturbance of the ground.

Where geophysical techniques are employed, a technical report should be prepared that details the instrument and applicable settings used, the transect interval, and graphically shows the location and interpretation of anomalies detected. For GPR surveys for example, this should include sample processed GPR profiles showing the shapes and depths of detected anomalies, as well as representative time-slice plan view maps of the anomalies. This will help in understanding the potential depth of any graves present, as well as provide information about other disturbances or sources of interference that may potentially mask the location of additional graves not detected by geophysical methods.

In cases where potential grave shafts are identified in areas that may be subject to future ground disturbance or construction, any anomalies interpreted as potential grave shafts must be tested archaeologically to determine whether the anomaly is in fact associated with a grave.

E. Archaeological Field Investigations: Maryland state law requires the authorization of the State's Attorney for the county be obtained prior to remains being removed from the site. All archaeological work plans for work in cemeteries must include provisions for fulfilling the public notice requirements of state law and obtaining the authorization of the State's Attorney, and for the proper and respectful handling of any human remains and associated objects pending reinterment. Any analysis of potential human remains should be conducted by a qualified forensic anthropologist. Analysis of human remains potentially associated with Native Americans should be conducted in a manner consistent with protocols developed by the Maryland Commission on Indian Affairs.

Archaeological investigations should begin with a pedestrian survey designed to identify depressions in the earth, overgrown head or foot stones, fences, and concentrations or alignments of unmodified fieldstone that might mark graves, as well as the location of any plantings such as yucca, vinca, lilies, daffodils or others that could be associated with burial grounds. The vicinity of animal burrows should be inspected to see any coffin hardware or human remains which might have been brought to the surface.

The most definitive method for identifying the presence or absence of unmarked graves is through archaeological testing. Archaeological testing can be most effectively targeted when it follows historical, oral history, and geophysical investigations and an archaeological pedestrian survey. These methods can help identify which areas near known graves are most likely to have additional burials and are thus a priority for archaeological excavation. Intensive archaeological testing will generally include hand excavation above a geotechnical anomaly, depression, or other indication of an unmarked grave to the interface between the surface layer and the underlying subsoil. Soil should be hand screened through hardware mesh cloth no coarser than ¼ inch mesh size. Excavation should expose the whole perimeter of any subsurface feature found to assess the likelihood that it is a grave. Excavation should not extend deeper into the grave shaft than necessary to reveal it in planview and establish its dimensions. Disturbance of the grave itself should be avoided.

Mechanical testing of potential grave locations is acceptable when done with a smooth-edged bucket, and under the supervision of a qualified archaeologist. Mechanical excavation should only proceed to the interface between topsoil and subsoil. Where mechanical excavation is planned, at least a sample of the topsoil must be hand excavated and screened to assess the likelihood that human remains, or associated coffin hardware are present on or near the surface. If hand excavation and screening of the topsoil recover human remains or coffin hardware, then mechanical excavation in that location shall not be attempted.

F. **Professional Qualifications:** Work must be directed by a professional archaeologist meeting the qualifications listed in Appendix C. The work plan must provide for the services of a qualified forensic anthropologist to analyze any potential human remains recovered during the investigations (see Appendix C: Definitions).

II Guidelines for Archaeological Reporting and Curation

Analysis and reporting of investigations carried out to define cemetery boundaries must be sufficient to clearly document what was done and provide the technical basis for the conclusions drawn. If human remains are recovered, these must be analyzed by a qualified forensic anthropologist to verify that the bones are in fact human.

At the conclusion of investigations, the applicant shall prepare an archaeological technical report. The report must be consistent with the Standards and Guidelines for Archeological Investigations in Maryland (Shaffer and Cole 1994), and include a summary of the history of the cemetery site and environs, a discussion of field methods employed, a description of results including maps, plan and profile view drawings and photographs of investigated features, an inventory of recovered artifacts, a report from the forensic anthropologist (as needed), and a conclusion that includes a long-term maintenance program for maintaining the burial site, a plan for any potential relocations of human remains and associated materials to the site, and a process for protecting the burial site during future construction activities. The report will also create or amend as necessary any Maryland Inventory of Historic Properties (MIHP) or Maryland Inventory of Historic Properties Archeological Site Survey Forms. The draft report must be submitted for review by the

Montgomery County Planning Board Guidelines for Burial Sites
Appendix A: Standards for Cemetery Investigations

Montgomery County Compliance Review Archaeologist, and MHT. The report must be approved by the Compliance Review Archaeologist prior to Preliminary Plan approval.

Archaeological Curation: At the conclusion of analysis and reporting, any human remains or associated grave items should be reinterred on site, or at an appropriate cemetery location selected in consultation with the Compliance Review Archaeologist. Other artifacts recovered during any archaeological testing are the property of the landowner. It is recommended that applicants arrange to curate the artifact collection and associated documentation with the Maryland Archeological Conservation Lab (MAC Lab), at the Jefferson Patterson Park and Museum, St. Leonard, MD.

Appendix B: Standards for Maintenance of Burial Sites

Features identified in a burial site's inventory should be maintained in a fashion that will preserve them for future generations. Proper maintenance of a cemetery is key to the continued preservation of the site. A maintained cemetery welcomes visitation and will experience fewer problems with deterioration or vandalism. A maintenance schedule should include day-to-day, periodic, and long-term maintenance components. Guidance for proper cemetery maintenance can be found from the National Park Service: [Preservation Brief 48: Preserving Grave Markers in Historic Cemeteries](#). The needs and priorities for maintenance and preservation are specific to each cemetery site and must be approved by the Planning Board as part of parcel subdivision process.

Short term goals shall include as appropriate:

- Weeding
- Pruning
- Mowing
- Removing Litter

Longer term goals shall include as appropriate:

- Landscaping
- Addressing Erosion
- Replacement of trees and significant plantings
- Installation of fencing
- Gravestone repair

Mowing

Modern mowers allow for efficient maintenance but are one of the major causes of damage to markers in historic cemeteries. The following guidelines will help preserve the site.

Problematic Practices:

1. Riding mowers (these may knock headstones, damaging or toppling them);
2. Bumping stones with any mower;
3. Leaving grass clippings on stones (this will allow moisture to accumulate on a stone, or where the stone is joined to a base, causing the marker to deteriorate).

Best Practices:

1. Use a walk-behind mower
2. Stay at least 12 inches away from any stone with a mower
3. Trim next to stones with hand tools
4. Equip mower with rubber bumpers and discharge guards
5. Remove grass clippings.

Adding a non-grass buffer around stones or other features such as mulch may help protect them from mowing. It is best in some settings to consider alternatives to grass lawns such as low

growing heathers, phlox or other ground covers that will grow well in the area, stay low, look attractive, and require less maintenance. Some useful suggestions can be found from the National Center for Preservation Technology and Training: [Preservation Maintenance of Turf Using Resource Sensitive Techniques in Historic Landscapes](#).

Landscaping

Many headstones, footstones, and other features may get buried due to erosion, subsidence, accumulation of grass and leaf litter, burrowing animals and other forces. To best preserve the cemetery's historic landscape and to respect those buried there, such items should be continually exposed. Regular grounds maintenance will help forestall some of these problems, but where a stone has significantly sunk into the ground, or where a stone is leaning and in danger of toppling, or has toppled, the intervention of someone trained in cemetery conservation may be needed. In such cases, the stone can be carefully lifted, leveled, and sharp gravel placed underneath to help prevent further movement. Guidance for resetting headstones can be found from the National Center for Preservation Technology and Training:

[Resetting Ground Supporting Headstones](#).

Trees

Historic cemeteries may have multiple trees and bushes. The health of any trees should be assessed in order to establish a plan for their maintenance or removal and replacement. Ideally, a tree would be replaced with a tree of a similar species, unless these are so close to grave markers that the growth of the tree may move or damage the stone. Weed trees growing within a few feet of grave markers or other cemetery landscape features should be removed promptly before they displace markers or other important objects. Note that tree removal on cemeteries included in the Master Plan of Historic Sites may be subject to Forest Conservation requirements.

- Inspect trees to ensure the root system is not interfering with gravestones
- If removal of a tree in proximity to a gravestone is necessary, cut it as close to ground as possible. Allow the stump to decay naturally. Do not use chemical herbicides as these may discolor or damage stones.
- Replacement trees should not interfere with grave markers, fences, paths, or roads

Fencing

Where consistent with the historical character of a graveyard, applicants should consider installing a fence around the perimeter of the cemetery. A fence may promote the long-term maintenance of the site and further delineate the space from the surrounding environment. Applicant should discuss proposed fence design with Historic Preservation staff. Where the cemetery is listed as a historic site, or is in a historic district, the applicant will need to obtain a Historic Area Work Permit from the Historic Preservation Commission.

Gravestone Cleaning and Repair

Cleaning: Gravestones can be damaged by natural weathering and by people. The weathering of stone is a physical and chemical process that occurs slowly over time at different rates depending on the material. Marble may erode faster than other stones because the calcite and

Montgomery County Planning Board Guidelines for Burial Sites
Appendix B: Standards for Maintenance of Burial Sites

dolomite it contains is more soluble in acid rain. Pollutants and the growth of lichens, moss, or mold can also stain grave markers. However, one must not confuse a stone's natural patina (color) with pollutants. The goal of cleaning and repairing headstones is not to return a headstone to its original brightness, but to stop or slow the potential damage that is being done. Overly aggressive cleaning methods needed to return a stone to its original color will cause irreparable damage by removing some of the stone's surface thus making it more vulnerable to future erosion.

Repair: Resetting tilted grave markers or repair of broken stones will not only help preserve the historical character of a site but will also help forestall future damage. Gravestone repair needs to be understood as a kind of conservation that may require specialized materials and skills. Resources for training, materials, and techniques should be consulted and approved by Planning Department staff before attempting any repairs. If the repair is complex in nature, consult a conservation professional for further instruction or information.

A repair:

1. should not be as strong as the original material, otherwise it may cause the original material to crack.
2. should be reversible to allow for redoing in the future with better materials
3. should respect the original material.
4. should be historically accurate (e.g. appropriate mortar).
5. should not inhibit natural permeability/breath-ability of the stone (beware of sealants).
6. should only be conducted on sound stones.

Additional guidelines and resources for safe cleaning and repair methods can be found at:

- [Preservation Brief 48: Preserving Grave Markers in Historic Cemeteries](#)
- [National Center for Preservation Technology and Training: Cemetery Conservation](#)
- [Maryland Historical Trust: Historic Cemetery Preservation](#)
- [Coalition to Protect Maryland Burial Sites](#)
- [Chicora Foundation: Cemetery Lawn Maintenance](#)

Appendix C: Definitions and Terms used in the Guidelines

Anomaly— In archaeological survey, an anomaly is an area whose characteristics as measured by a geophysical instrument such as ground penetrating radar or magnetometer differ from its surroundings. Anomalies may be places where the soil is denser or looser than the surrounding soil, or where there is a concentration of magnetic material such as iron or brick. Anomalies may correspond to archaeological features such as grave shafts, foundations, wells, or other man-made structures.

Archaeological Professional—Meets the Secretary of the Interior’s Professional Qualification Standards, as stated in the Secretary of the Interior’s *Standards and Guidelines for Archeology and Historic Preservation* (36 CFR 61), as follows:

1. “The minimum professional qualifications in archeology are a graduate degree in archeology, anthropology, or closely related field plus:
2. At least one year of full-time professional experience or equivalent specialized training in archeological research, administration or management;
3. At least four months of supervised field and analytic experience in general North American archeology; and
4. Demonstrated ability to carry research to completion.

“In addition to these minimum qualifications, a professional in prehistoric archeology shall have at least one year of full-time professional experience at a supervisory level in the study of archeological resources of the prehistoric period. A professional in historic archeology shall have at least one year of full-time professional experience at a supervisory level in the study of archeological resources of the historic period.”

Burial Site—Montgomery County Ordinance 33A-17 defines a burial site as the “physical location where human remains were buried in the earth, or entombed in mausoleum or columbarium. A burial site includes a cemetery, but does not include the sprinkling of ashes from cremated remains.”

Cemetery—See Burial Site

Collection—The material remains that are excavated or removed during a survey, excavation, or other study of a prehistoric or historic archeological resource, as well as the associated records that are prepared or assembled in connection with the survey, excavation, or other study.

Compliance Review Archaeologist—Staff archaeologist with the Montgomery County Planning Department tasked with overseeing the Burial Sites Inventory program and review of archaeological sites under the historic preservation ordinance and cemetery sites under Ordinance

18-31.

Curation—Inventorying, accessioning, labeling, cleaning, and cataloging a collection (to be completed by the archeological consultant). Providing curatorial services means managing and preserving a collection according to professional museum and archival practices, including, but not limited to: storing and maintaining a collection, using appropriate methods and containers, under appropriate environmental conditions and physically secure controls (to be completed by repository).

Data Recovery Plan—Written description of proposed archival research, archaeological fieldwork, and analysis methods and techniques.

Feature— Physical remains of past human activity in a discrete area of a landscape or archaeological site such as a building foundation, a well, or grave shaft.

Forensic Anthropologist—A forensic anthropologist conducts anthropological analyses of human remains to determine, where possible, the approximate age, sex, race, and other characteristics of the remains that may be of use in potentially identifying the individual. A qualified forensic anthropologist independently supervising a project should have at a minimum a master's degree, and preferably a doctoral degree or equivalent in Physical/Biological Anthropology or a closely related field with a significant emphasis in training and experience on forensic anthropology, human osteology, skeletal biology and human variation.

Grave Shaft—The area of a grave between the burial and the ground surface. Once a burial has been placed in the bottom of a grave the shaft is filled in with the earth excavated from the grave. This soil will be a mixture of the dark topsoil with the lighter subsoils beneath and will be less compact than the surrounding soil. This difference in color and texture helps make grave shafts detectable by archaeological survey.

Ground Penetrating Radar —Geophysical survey instrument used to detect variations in soil density. Discrete areas of difference, anomalies, may correspond to areas of past human activity and provide an indication of buried features of an archaeological site.

Historic Preservation Staff—The Historic Preservation staff, including preservation planners, architectural historians, and a 36 CFR 61 qualified archeologist, are part of the Historic Preservation Section in the Montgomery County Planning Department, M-NCPPC.

Historic district: A group of historic resources which are significant as a cohesive unit and contribute to the historical, architectural, archeological or cultural values within the Maryland-Washington Regional District and which has been so designated in the master plan for historic preservation.

Historic resource: A district, site, building, structure or object, including its appurtenances and environmental setting, which is significant in national, state or local history, architecture, archeology or culture. This includes, but is not limited to, all properties on the "Locational Atlas and Index of Historic Sites in Montgomery County."

Historic site: Any individual historic resource that is significant and contributes to the historical, architectural, archeological or cultural values within the Maryland-Washington Regional District and which has been so designated in the master plan for historic preservation.

Magnetometer—Geophysical survey instrument used to detect variations in the earth’s magnetic sphere. Discrete areas of variation, or anomalies, may correspond to concentrations of magnetic material such as iron or brick, and thus serve as an indication of past human activity.

Maryland Historical Trust (MHT)—The Maryland Historical Trust is the principal operating unit within the Division of Historical and Cultural Programs, an agency of the Maryland Department of Housing and Community Development. The MHT was created in 1961 to assist the people of Maryland in identifying, studying, evaluating, preserving, protecting, and interpreting the state’s significant historic, architectural and cultural resources. The Maryland Historical Trust serves as the state historic preservation office (SHPO) for Maryland.

Maryland Inventory of Historic Properties (MIHP)—The Maryland Historical Trust’s list of districts, sites, buildings, structures, and objects of known or potential value to the prehistory, history, terrestrial or underwater archeology, architecture, engineering, and culture of Maryland.

Maryland Inventory of Historic Properties Archeological Site Survey Form—Form to be completed when an archeological site is identified. The form includes information on type of site, condition, location, and artifacts recovered.

Maryland Register of Historic Properties—The Maryland Historical Trust’s list of all properties included in or determined by its director to be eligible for listing in the National Register of Historic Places.

National Register of Historic Places—The official federal list, maintained by the National Park Service, of districts, sites, buildings, structures, and objects significant in American history, architecture, archeology, engineering, and culture.

Planning Board or Designee—The Montgomery County Planning Board. The Board may designate Montgomery County Planning Department to act as its designee where specified in these Guidelines.

Preservation and Historic Preservation—“Identification, evaluation, recordation, documentation, curation, acquisition, protection, management, rehabilitation, restoration, stabilization, maintenance, and reconstruction, or any combination of the foregoing activities.” (16 U.S.C. 470w[8]).

pXRF—Portable X-Ray Fluorescence Spectroscopy. Technique for identifying the chemical composition of a subject using X-Ray beams. It is most often used in archaeology on objects such as ceramic vessels to help identify potential sources of the clay used. It has been used for chemical analysis of soils on archaeological sites to identify features such as grave shafts.

Person in Interest—In Maryland Code: Real Property Article § 14-121. Burial sites – Access

"Person in interest" means a person who:

- (i) Is related by blood or marriage to the person interred in a burial site;
- (ii) Is a domestic partner, as defined in § 1-101 of the Health - General Article, of a person interred in a burial site;
- (iii) Has a cultural affiliation with the person interred in a burial site; or
- (iv) Has an interest in a burial site that the Office of the State's Attorney for the county where the burial site is located recognizes is in the public interest after consultation with a local burial sites advisory board or, if such a board does not exist, the Maryland Historical Trust.

Significant— Having the qualities of a historic site, district or resource that contribute to its historical character and potential eligibility for listing in the County's Master Plan for Historic Preservation.

Stratigraphic integrity—An archeological site that is found in soil that has kept its original soil stratigraphy and is undisturbed or has been minimally disturbed by erosion, agricultural practices, or other soil disturbance.

Tile Probe Survey— Using a tile probe (long metal rod) to identify potential grave shafts. The distance the probe can be inserted into the ground is measured at regular intervals across a site. Grave shafts may have soil that is less compact than the soils around them, allowing them to be identified this way.

Appendix D: Preliminary Plan Review Process

Preliminary Plan Review Process



Forest Conservation

Description: Before submitting a Preliminary Plan, a Natural Resources Inventory (NRI) or Forest Conservation Plan Exemption (FCPE) must be approved.

Cemetery Requirements: Conduct initial survey and inventory of cemetery boundaries and features. Applicants may meet with Planning Department Staff to determine what studies may be required for cemetery delineation, and begin those investigations prior to preliminary plan submittal.

Timing Planning Department Staff have 30 days to review NRIFSD and cemetery documentation provided at that time.



Submit Preliminary Plan

Description: Instructions for submitting Preliminary Plans can be found at: <https://montgomeryplanning.org/development/development-applications/preliminary-plan/>

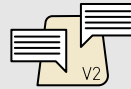
Cemetery Requirements: Stake cemetery boundary, include boundary on preliminary plans



Development Review Committee

Description: Preliminary Plans go to DRC. Planning Staff prepare recommendations for Planning Board

Cemetery Requirements: Planning Department Staff will review to determine whether additional investigations are required to verify or refine proposed cemetery boundary



Preliminary Plan Revisions

Description: Planning Board takes testimony and votes whether to approve the preliminary plan

Cemetery Requirements: Prior to Planning Board Hearing, cemetery studies must be completed and approved by Planning Department staff, and final cemetery boundaries staked and shown on Preliminary Plan drawings.

Timing: Within 120 days of preliminary plan submittal



Amendments

Description: Preliminary Plans may be amended. Before submitting an application, applicants must meet with planning staff and receive an amendment checklist that outlines the required submission items.



Relocations

Description: Preliminary plans proposing to relocate human remains with the approval of the Planning Board.

Cemetery Requirements: Must comply with the provisions of Section IV of the Burial Sites Guidelines, including obtaining the authorization of the State's Attorney for Montgomery County.

Timing Following approval of the preliminary plan by the Planning Board.

Attachment B:

Montgomery County Burial Sites Inventory

Brief Statistics

Records: 326

Known Locations: 234

Approximate Locations: 73

Location not mapped: 19

Component of Master Plan Site or District: 55

Associated Data

re

Attributes in Data Table:

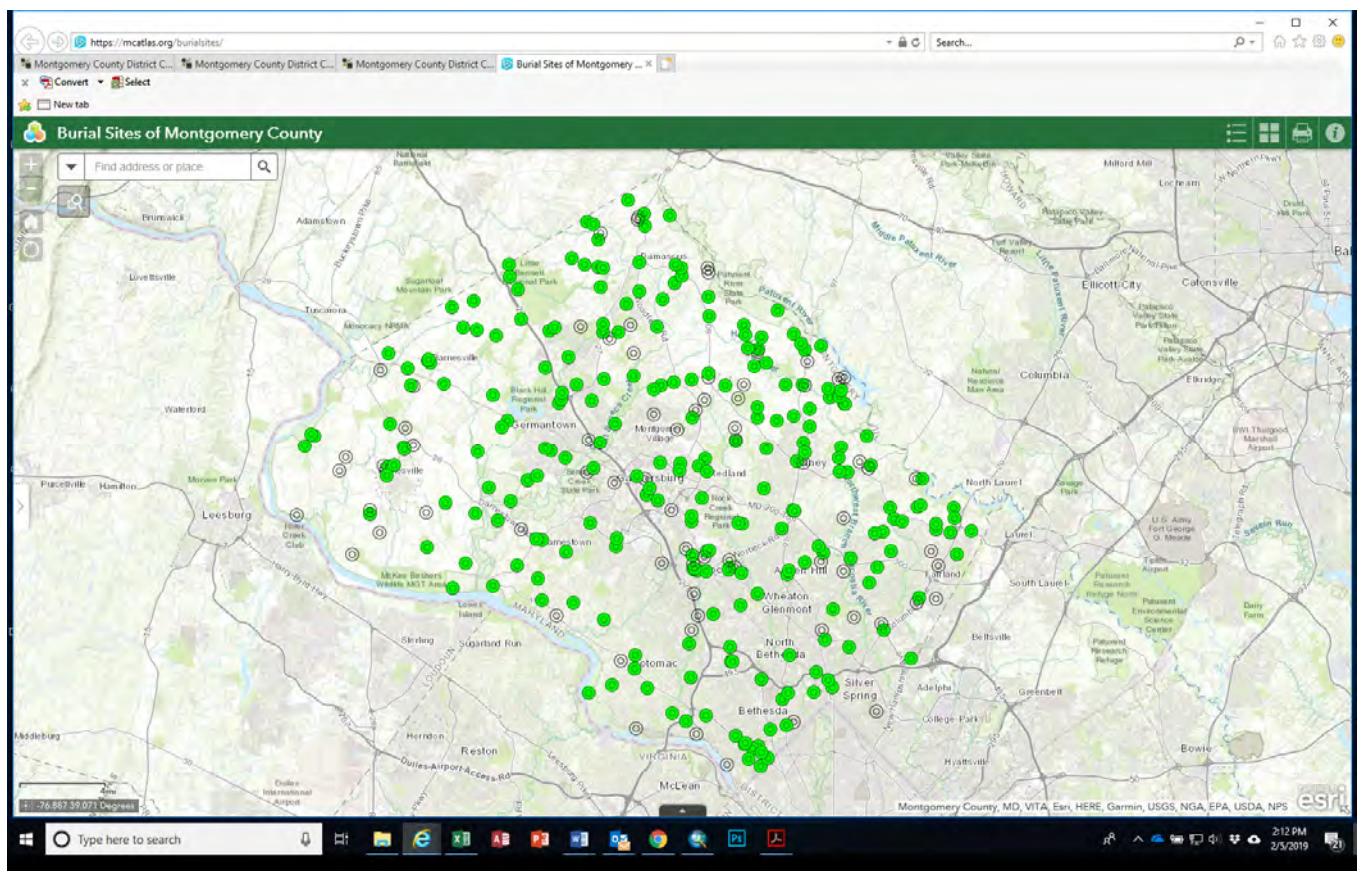
Field	Type	Description
Object ID	Number	System generated unique ID
Shape	Geometry	holds the GIS shape (point, polygon, etc.)
HP ID Num	Text	ID number assigned by Historic Preservation Office
MCCIR Num	Text	ID number assigned by Montgomery Preservation, Inc.
Name	Text	Name
Address	Text	Address
Location	Text	Town
Earliest Date	Number	Earliest known burial year
Latest Date	Number	Latest known burial year
Loc Confirmed	Text	Location confirmed in field visit
GIS Source	Text	Source of location information
GIS Confidence	Text	Known or Approximate
Number of Burials	Text	Number of burials
Geometry ID	GUID	unique ID for replicating database
User Site ID	Text	Alternate ID number
Source Data Date	Text	Date of source data
Source Data Datum	Text	Geographical Datum (e.g. NAD 1983)
Revision Date	Text	Date of last revision
Boundary Type	Text	Type of Boundary
Extant	Text	Is the site extant?
Horizontal Accuracy	Text	Estimate of locational accuracy
Map Method	Text	How location was mapped
Originator	Text	Who recorded the data?
Sensitive Location	Text	Is the location considered at risk?
Restrictions	Text	Restrictions on use/release of data
Max Display Scale	Text	Max scale location can be shown in GIS
Sensitivity Contacts	Text	Person with information about sensitivity

Attributes in Data Table:

Field	Type	Description
Sensitivity Rationale	Text	Reason location considered sensitive
Notes	Text	Notes
Master Plan Number	Text	ID number if Master Plan Site
Master Plan Type	Text	Type of Master Plan property
2006 Form	Text	Link to 2006 Form
2018 Form	Text	Link to 2018 Form

Web Application

<https://mcatlas.org/burialsites/>



ID	NAME	Earliest Date	Latest Date	Loc Confir	GIS_SOURCE	GIS Confidence	Burials	Source Date	Extant	ORIGINATOR	SENSITIVE	MP Num	MP Type
HP-1	Young-Remsburg Family Cemetery	0	0	No	2006 inventory	Approximate	0	10/15/2018	Unknown	Montgomery Preservation, Inc.			
HP-10	Spencer Family Cemetery	0	0	No	2006 inventory	Approximate	0	10/15/2018	Unknown	Montgomery Preservation, Inc.			
HP-100	Judean Memorial Gardens	1975	2018	Yes	MCCIR 2018	Known	5000	10/15/2018	Yes	Montgomery Preservation, Inc.			
HP-101	Laytonsville Methodist Cemetery	1859	2018		MCCIR 2018	Known	1000	10/15/2018	Yes	Montgomery Preservation, Inc.			
HP-102	Lincoln Park Cemetery Galilean Fisher	1920	2015	Yes	MCCIR 2018	Known	475	10/15/2018	Yes	Montgomery Preservation, Inc.			
HP-103	Monocacy Cemetery	1822	2018	Yes	MCCIR 2018	Known	5500	10/15/2018	Yes	Montgomery Preservation, Inc.		17/001-00	MASTER PLAN HISTORIC DISTRICT
HP-104	Montgomery United Methodist Church Cemetery	1871	2018	Yes	MCCIR 2018	Known	800	10/15/2018	Yes	Montgomery Preservation, Inc.			
HP-105	Gibson Grove AME Church Cemetery	0	0		MCCIR 2018	Known	12	10/15/2018	Yes	Montgomery Preservation, Inc.			
HP-106	Montgomery Chapel Cemetery	1883	1968	Yes	MCCIR 2018	Known	38	10/15/2018	Yes	Montgomery Preservation, Inc.		10/058-00	Locational Atlas Individual Sites
HP-107	Mt. Calvary A.U.M.P. Church Cemetery	0	1965	Yes	MCCIR 2018	Known	25	10/15/2018	Yes	Montgomery Preservation, Inc.			
HP-108	Mt. Carmel Patuxent Cemetery	1861	2018		MCCIR 2018	Known	775	10/15/2018	Yes	Montgomery Preservation, Inc.			
HP-109	Mt. Lebanon Methodist Protestant Church Cemetery	1907	2015		MCCIR 2018	Known	100	10/15/2018	Yes	Montgomery Preservation, Inc.		15/020-00	Locational Atlas Individual Sites
HP-11	Samuel Shoemaker Family Cemetery	1883	1888	Yes	MCCIR 2018	Known	11	10/15/2018	Yes	Montgomery Preservation, Inc.			
HP-110	Mt. Pleasant Methodist Church Cemetery	1893	1958	Yes	MCCIR 2018	Known	50	10/15/2018	Yes	Montgomery Preservation, Inc.			
HP-111	Jerusalem-Mt. Pleasant United Methodist Church Cemetery	1893	1962	Yes	MCCIR 2018	Known	28	10/15/2018	Yes	Montgomery Preservation, Inc.			
HP-112	Mt. Tabor United Methodist Church Cemetery	1884	2017	Yes	MCCIR 2018	Known	160	10/15/2018	Yes	Montgomery Preservation, Inc.		15/29	MASTER PLAN HISTORIC DISTRICT
HP-113	Mt. Zion Church Cemetery	1922	2017	Yes	MCCIR 2018	Known	100	10/15/2018	Yes	Montgomery Preservation, Inc.			
HP-114	Mt. Zion United Methodist Church Cemetery	1886	2013		MCCIR 2018	Known	170	10/15/2018	Yes	Montgomery Preservation, Inc.			
HP-115	Mountain View United Methodist Church Cemetery	1875	2018	Yes	MCCIR 2018	Known	210	10/15/2018	Yes	Montgomery Preservation, Inc.		10/024-00	Locational Atlas Historic District
HP-116	Mutual Memorial Cemetery	1878	2017	Yes	MCCIR 2018	Known	260	10/15/2018	Yes	Montgomery Preservation, Inc.			
HP-117	Neelsville Presbyterian Church Cemetery	1833	2017	Yes	MCCIR 2018	Known	650	10/15/2018	Yes	Montgomery Preservation, Inc.		19/005-00	MASTER PLAN INDIVIDUAL SITES
HP-118	Norbeck Memorial Park	1975	2018	Yes	MCCIR 2018	Known	5000	10/15/2018	Yes	Montgomery Preservation, Inc.			
HP-119	Oak Grove AME Zion Church Cemetery	1913	2002	Yes	MCCIR 2018	Known	11	10/15/2018	Yes	Montgomery Preservation, Inc.			
HP-12	Shaw (Lemuel) Family Cemetery	0	0	No	2006 inventory	Approximate	0	10/15/2018	Moved	Montgomery Preservation, Inc.			
HP-120	Layhill/Lay Hill ME Church South Cemetery	1887	1954	Yes	MCCIR 2018	Known	80	10/15/2018	Yes	Montgomery Preservation, Inc.		27/010-00	MASTER PLAN INDIVIDUAL SITES
HP-121	Parklawn Memorial Park and Menorah	1951	2018	Yes	MCCIR 2018	Known	11500	10/15/2018	Yes	Montgomery Preservation, Inc.			
HP-122	Pleasant Grove Community Church Cemetery	1884	2003	Yes	MCCIR 2018	Known	70	10/15/2018	Yes	Montgomery Preservation, Inc.		10/024-00	Locational Atlas Historic District
HP-123	Pleasant View United Methodist Church Cemetery	1890	2015	Yes	MCCIR 2018	Known	70	10/15/2018	Yes	Montgomery Preservation, Inc.		24/013-00	MASTER PLAN INDIVIDUAL SITES
HP-124	Poolesville Methodist Church Cemetery	1845	1864	Yes	MCCIR 2018	Known	16	10/15/2018	Yes	Montgomery Preservation, Inc.			
HP-125	Poplar Grove Baptist Church Cemetery	0	0	Yes	MCCIR 2018	Known	0	10/15/2018	Yes	Montgomery Preservation, Inc.		24/016-00	MASTER PLAN INDIVIDUAL SITES
HP-126	Potomac United Methodist Church Cemetery	1793	2018	Yes	MCCIR 2018	Known	1533	10/15/2018	Yes	Montgomery Preservation, Inc.			
HP-127	Rockville Cemetery	1742	2018	Yes	MCCIR 2018	Known	5000	10/15/2018	Yes	Montgomery Preservation, Inc.			
HP-128	Rockville Baptist Cemetery	1839	1896	Yes	MCCIR 2018	Known	33	10/15/2018	Yes	Montgomery Preservation, Inc.			
HP-129	Round Oak Missionary Baptist Church Cemetery	1850	2012	Yes	2006 inventory	Known	35	10/15/2018	Yes	Montgomery Preservation, Inc.			
HP-13	Beechmont	0	0	No	Find a Grave	Approximate	0	10/15/2018	Unknown	Montgomery Preservation, Inc.			
HP-130	St. Gabriel's Roman Catholic Church Cemetery	1896	2018	Yes	MCCIR 2018	Known	0	10/15/2018	Yes	Montgomery Preservation, Inc.			
HP-131	St. John the Evangelist Catholic Church Cemetery	1796	2018	Yes	MCCIR 2018	Known	1700	10/15/2018	Yes	Montgomery Preservation, Inc.		31/008-00	MASTER PLAN HISTORIC DISTRICT
HP-132	St. John's Episcopal Church Cemetery	1836	2017		MCCIR 2018	Known	460	10/15/2018	Yes	Montgomery Preservation, Inc.		23/098-00	MASTER PLAN INDIVIDUAL SITES
HP-133	St. Luke's Episcopal Church Cemetery	1887	2006	Yes	MCCIR 2018	Known	8	10/15/2018	Yes	Montgomery Preservation, Inc.			
HP-134	St. Luke's Lutheran Church Cemetery	1919	2017	Yes	MCCIR 2018	Known	250	10/15/2018	Yes	Montgomery Preservation, Inc.			
HP-135	St. Mark's Episcopal Church Cemetery	1862	2018	Yes	MCCIR 2018	Known	200	10/15/2018	Yes	Montgomery Preservation, Inc.			
HP-136	St. Mark's United Methodist Church Cemetery	1827	2017	Yes	MCCIR 2018	Known	275	10/15/2018	Yes	Montgomery Preservation, Inc.		18/008-00	MASTER PLAN HISTORIC DISTRICT
HP-137	Saint Mary's Church Cemetery	1830	2018	Yes	MCCIR 2018	Known	400	10/15/2018	Yes	Montgomery Preservation, Inc.			
HP-138	St. Mary's Catholic Cemetery	1917	2018	Yes	MCCIR 2018	Known	1000	10/15/2018	Yes	Montgomery Preservation, Inc.			
HP-139	St. Mary's Catholic Church Cemetery	1817	2011	Yes	MCCIR 2018	Known	275	10/15/2018	Yes	Montgomery Preservation, Inc.			
HP-14	Riggs (Samuel) Family Cemetery	1829	1906	Yes	MCCIR 2018	Known	6	10/15/2018	Yes	Montgomery Preservation, Inc.			
HP-140	St. Paul Community Church Cemetery	1871	2017	Yes	MCCIR 2018	Known	305	10/15/2018	Yes	Montgomery Preservation, Inc.		17/041-00	MASTER PLAN INDIVIDUAL SITES
HP-141	St. Rose of Lima Roman Catholic Church Cemetery	1860	2018	Yes	MCCIR 2018	Known	650	10/15/2018	Yes	Montgomery Preservation, Inc.			
HP-142	Salem United Methodist Church Cemetery	1825	2018		MCCIR 2018	Known	400	10/15/2018	Yes	Montgomery Preservation, Inc.		23/065-00	MASTER PLAN HISTORIC DISTRICT
HP-143	Salem United Methodist Church Cemetery	1831	2016	Yes	MCCIR 2018	Known	225	10/15/2018	Yes	Montgomery Preservation, Inc.		14/026-00	MASTER PLAN INDIVIDUAL SITES
HP-144	Seal Family Cemetery	1938	2015	Yes	MCCIR 2018	Known	75	10/15/2018	Yes	Montgomery Preservation, Inc.			
HP-145	Seneca Community Church Cemetery	1841	2017	Yes	MCCIR 2018	Known	82	10/15/2018	Yes	Montgomery Preservation, Inc.			
HP-146	Sitka Baptist Church Cemetery	0	0		MCCIR 2018	Known	0	10/15/2018	Yes	Montgomery Preservation, Inc.			
HP-147	Trinity United Methodist Church Cemetery	1877	1896	Yes	MCCIR 2018	Known	4	10/15/2018	Yes	Montgomery Preservation, Inc.			
HP-148	Union Cemetery	1850	2018		MCCIR 2018	Known	1900	10/15/2018	Yes	Montgomery Preservation, Inc.			
HP-149	Wesley Union Methodist Church Cemetery	0	0		MCCIR 2018	Known	0	10/15/2018	Yes	Montgomery Preservation, Inc.			
HP-15	Riggs (John Hammond) Cemetery	0	0	Yes	MCCIR 2018	Known	2	10/15/2018	Yes	Montgomery Preservation, Inc.			
HP-150	Upper Seneca Baptist Church Cemetery	1843	2017	Yes	MCCIR 2018	Known	300	10/15/2018	Yes	Montgomery Preservation, Inc.		14/027-00	MASTER PLAN HISTORIC DISTRICT
HP-151	Warren United Methodist Church Cemetery	1920	1984	Yes	MCCIR 2018	Known	10	10/15/2018	Yes	Montgomery Preservation, Inc.			

HP-152	Wesley Grove United Methodist Church	1877	2018	Yes	MCCIR 2018	Known	150	10/15/2018	Yes	Montgomery Preservation, Inc.	14/016-00(MASTER PLAN HISTORIC DISTRICT
HP-153	Mt. Zion Baptist Church Cemetery - Wi	1864	2018	Yes	MCCIR 2018	Known	670	10/15/2018	Yes	Montgomery Preservation, Inc.	30/018-00(MASTER PLAN INDIVIDUAL SITES
HP-154	Woodside Cemetery - Lea Family Ceme	1829	2018	Yes	MCCIR 2018	Known	220	10/15/2018	Yes	Montgomery Preservation, Inc.	
HP-155	Alloway-Miller Cemetery Cemetery	0		0 Yes	MCCIR 2018	Known	0	10/15/2018	Moved	Montgomery Preservation, Inc.	
HP-156	Kemp-Mullican Family Cemetery	0		0 No	2018 Survey has 21	Approximate	0	10/15/2018	Unknown	Montgomery Preservation, Inc.	
HP-157	Hopkins Family Cemetery	0		0	MCCIR 2018	Known	0	10/15/2018	Yes	Montgomery Preservation, Inc.	
HP-158	Cashell Family Cemetery	0		0	MCCIR 2018	Known	0	10/15/2018	Moved	Montgomery Preservation, Inc.	
HP-159	Burgess Family Cemetery	0		0 No	2006 inventory	Approximate	0	10/15/2018	Unknown	Montgomery Preservation, Inc.	
HP-16	Ricketts Family Cemetery	0		0 Yes	MCCIR 2018	Known	3	10/15/2018	Yes	Montgomery Preservation, Inc.	
HP-160	Flint Hill I Homestead	0		0 No	No GIS data.	NA	0	10/15/2018	Unknown	Montgomery Preservation, Inc.	
HP-161	Gaithersburg Presbyterian Memorial G	0		0	MCCIR 2018	Known	0	10/15/2018	Yes	Montgomery Preservation, Inc.	
HP-162	Aspin Hill Memorial Park	1918	2018	Yes	MCCIR 2018	Known	50000	10/15/2018	Yes	Montgomery Preservation, Inc.	27/017-00(MASTER PLAN INDIVIDUAL SITES
HP-163	Sugar Loaf Mountain Chapel Cemetery	1826	1959	Yes	MCCIR 2018	Known	75	10/15/2018	Yes	Montgomery Preservation, Inc.	
HP-164	Good Shepherd Episcopal Columbariur	1960	2017		MCCIR 2018	Known	240	10/15/2018	Yes	Montgomery Preservation, Inc.	
HP-165	Gott Family Farm - â€œFertile Plainsâ€	1812	1871		MCCIR 2018	Known	4	10/15/2018	Yes	Montgomery Preservation, Inc.	18/016-00: Locational Atlas Individual Sites
HP-166	Bowman (Rezin) Family	0		0 No	2006 Inventory	Approximate	0	10/15/2018	Unknown	Montgomery Preservation, Inc.	
HP-167	Clark Family Cemetery	1803	1817	Yes	MCCIR 2018	Known	9	10/15/2018	Yes	Montgomery Preservation, Inc.	
HP-168	Shaw Family Cemetery - Gue Family Ce	1842	1881	Yes	MCCIR 2018	Known	4	10/15/2018	Yes	Montgomery Preservation, Inc.	
HP-169	Duvall Family Cemetery	0		0 Yes	MCCIR 2018	Known	0	10/15/2018	Yes	Montgomery Preservation, Inc.	
HP-17	Richardson Family Cemetery	0		0 No	Suggested location	Approximate	0	10/15/2018	Unknown	Montgomery Preservation, Inc.	
HP-170	Young Family Cemetery - ""Kilmain""	0		0 No	No GIS data	NA	0	10/15/2018	Unknown	Montgomery Preservation, Inc.	
HP-171	Martinsburg Community Cemetery - N	1972	2016		MCCIR 2018	Known	50	10/15/2018	Yes	Montgomery Preservation, Inc.	
HP-172	Merry Go Round Farm ""Columbarium	1969	1992	No	Find a Grave coor	Approximate	2	10/15/2018	Unknown	Montgomery Preservation, Inc.	
HP-173	Horace Waters Cemetery	0		0 Yes	MCCIR 2018	Known	0	10/15/2018	Yes	Montgomery Preservation, Inc.	
HP-174	Howard Family Cemetery	1885	1965	Yes	MCCIR 2018	Known	8	10/15/2018	Yes	Montgomery Preservation, Inc.	
HP-175	Triadelphia Cemetery	1815	1899	Yes	MCCIR 2018	Known	40	10/15/2018	Yes	Montgomery Preservation, Inc.	
HP-176	Magruder Family Cemetery	1771	1874	Yes	MCCIR 2018	Known	4	10/15/2018	Yes	Montgomery Preservation, Inc.	
HP-177	Dorsey-Claggett-Owen Cemetery	1838	1911	Yes	MCCIR 2018	Known	8	10/15/2018	Yes	Montgomery Preservation, Inc.	
HP-178	Tobytown Cemetery	0		0 Yes	GPS	Known	0	10/15/2018	Yes	Montgomery Preservation, Inc.	25/014-00(MASTER PLAN INDIVIDUAL SITES
HP-179	Mt. Lebanon ME Church Cemetery - Be	0		0	MCCIR 2018	Known	0	10/15/2018	Yes	Montgomery Preservation, Inc.	
HP-18	Query Family Cemetery	0	1788	Yes	MCCIR 2018	Known	1	10/15/2018	Yes	Montgomery Preservation, Inc.	
HP-180	North Chevy Chase Christian Church M	1981	2016		MCCIR 2018	Known	62	10/15/2018	Yes	Montgomery Preservation, Inc.	
HP-181	Open Door MCC Memorial Garden	0		0	MCCIR 2018	Known	0	10/15/2018	Yes	Montgomery Preservation, Inc.	
HP-182	Freeman Family Cemetery	1998	2012		MCCIR 2018	Known	4	10/15/2018	Yes	Montgomery Preservation, Inc.	
HP-183	Etchison/Hilton Family Cemetery	0		0 Yes	2006 inventory	Known	0	10/15/2018	Yes	Montgomery Preservation, Inc.	
HP-184	Gartrell Family Cemetery	0		0 No	2018 approx locati	Approximate	0	10/15/2018	Unknown	Montgomery Preservation, Inc.	
HP-185	Brown Family Cemetery - ""Gittings Ha	1820	1912	Yes	MCCIR 2018	Known	15	10/15/2018	Yes	Montgomery Preservation, Inc.	
HP-186	Parker Family Cemetery	0		0	MCCIR 2018	Approximate	0	10/15/2018	Moved	Montgomery Preservation, Inc.	
HP-187	Pepe Family Cemetery â€œ ""Stella's Di	1984	2008		MCCIR 2018	Known	6	10/15/2018	Yes	Montgomery Preservation, Inc.	
HP-188	Griffith (Lyde) Family Cemetery	0		0	MCCIR 2018	Known	0	10/15/2018	Yes	Montgomery Preservation, Inc.	15/027-00: Locational Atlas Individual Sites
HP-189	Reflection Terrace Memorial	0		0	MCCIR 2018	Known	0	10/15/2018	Yes	Montgomery Preservation, Inc.	
HP-19	Purdum Family Cemetery	1795	2014	Yes	MCCIR 2018	Known	20	10/15/2018	Yes	Montgomery Preservation, Inc.	14/022-00: Locational Atlas Individual Sites
HP-190	Sharp Street United Methodist Church	0		0	MCCIR 2018	Known	0	10/15/2018	Yes	Montgomery Preservation, Inc.	28/011-00: MASTER PLAN INDIVIDUAL SITES
HP-191	Lutheran Church of St. Andrew Colum	0		0	MCCIR 2018	Known	84	10/15/2018	Yes	Montgomery Preservation, Inc.	
HP-192	St. Dunstan's Episcopal Church Colum	1984	2016		MCCIR 2018	Known	26	10/15/2018	Yes	Montgomery Preservation, Inc.	
HP-193	Musgrove Family Cemetery	0		0 No	2006 Inventory ap	Approximate	0	10/15/2018	Unknown	Montgomery Preservation, Inc.	
HP-194	Pilgrim Baptist Church Cemetery	0		0	MCCIR 2018	Known	0	10/15/2018	Moved	Montgomery Preservation, Inc.	
HP-195	St. Francis Episcopal Church Columbari	1965	2019		MCCIR 2018	Known	200	10/15/2018	Yes	Montgomery Preservation, Inc.	
HP-196	Montgomery County Poor Farm Ceme	0		0 No	2006 inventory	Approximate	0	10/15/2018	Moved	Montgomery Preservation, Inc.	
HP-197	St. John's Norwood Parish Church Mer	1977	2018		MCCIR 2018	Known	125	10/15/2018	Yes	Montgomery Preservation, Inc.	
HP-198	Soper Family Cemetery	1867	1899		MCCIR 2018	Known	5	10/15/2018	Yes	Montgomery Preservation, Inc.	
HP-199	Lee Family Cemetery at Calverton-Galv	0	1857		MCCIR 2018	Approximate	1	10/15/2018	Unknown	Montgomery Preservation, Inc.	
HP-2	Young (Richard) Family	1871	1880	Yes	MCCIR 2018	Known	3	10/15/2018	Yes	Montgomery Preservation, Inc.	11/013-00: Locational Atlas Individual Sites
HP-20	Prather Family Cemetery	1838	1859	Yes	MCCIR 2018	Known	10	10/15/2018	Yes	Montgomery Preservation, Inc.	
HP-200	Mt. Zion Methodist Episcopal Church C	0		0	MCCIR 2018	Known	0	10/15/2018	Moved	Montgomery Preservation, Inc.	
HP-201	Benson (William) Family Cemetery	0		0 No	2018 survey has re	Approximate	0	10/15/2018	Unknown	Montgomery Preservation, Inc.	19/021-00(MASTER PLAN INDIVIDUAL SITES
HP-202	St. Luke's Episcopal Church Memorial (1976	2018		MCCIR 2018	Known	0	10/15/2018	Yes	Montgomery Preservation, Inc.	
HP-203	Barnesville Methodist Episcopal Ceme	1845	1925	Yes	MCCIR 2018	Known	60	10/15/2018	Yes	Montgomery Preservation, Inc.	
HP-204	Hays Family Cemetery	1822	1857	Yes	MCCIR 2018	Known	9	10/15/2018	Yes	Montgomery Preservation, Inc.	
HP-205	Saint Mark Presbyterian Memorial Gar	1993	2017		MCCIR 2018	Known	81	10/15/2018	Yes	Montgomery Preservation, Inc.	

HP-206	Bready Family Cemetery	0	0	MCCIR 2018	Approximate	0	10/15/2018 Moved	Montgomery Preservation, Inc.	
HP-207	Cissel-Trundle Family Cemetery	0	0 No	No GIS data	NA	0	10/15/2018 Unknown	Montgomery Preservation, Inc.	
HP-208	Cecil-Davis Family Cemetery	0	0 No	2006 inventory	Approximate	0	10/15/2018 Unknown	Montgomery Preservation, Inc.	
HP-209	Dorsey Family Burying Ground	1862	1993 Yes	MCCIR 2018	Known	6	10/15/2018 Yes	Montgomery Preservation, Inc.	23/006-00X MASTER PLAN INDIVIDUAL SITES
HP-21	Peter Family Cemetery à€" Montevide	1821	2016 Yes	MCCIR 2018	Known	8	10/15/2018 Yes	Montgomery Preservation, Inc.	
HP-210	Hoskinson Family Cemetery	0	0 No	2006 Inventory ap	Approximate	0	10/15/2018 Unknown	Montgomery Preservation, Inc.	16/014-00X Locational Atlas Individual Sites
HP-211	Jones Family Cemetery - "Honeysuckle	1847	1929 Yes	MCCIR 2018	Known	13	10/15/2018 Yes	Montgomery Preservation, Inc.	
HP-212	King-Day Family Cemetery	1876	1999 Yes	MCCIR 2018	Known	4	10/15/2018 Yes	Montgomery Preservation, Inc.	
HP-213	Warfield-Beall Family Cemetery	0	0 Yes	MCCIR 2018	Known	6	10/15/2018 Yes	Montgomery Preservation, Inc.	
HP-214	St. Paul's UM Church Memorial Garder	0	0	MCCIR 2018	Known	0	10/15/2018 Yes	Montgomery Preservation, Inc.	31/006-00X MASTER PLAN HISTORIC DISTRICT
HP-215	Transfiguration Episcopal Church Colur	1984	2018	MCCIR 2018	Known	84	10/15/2018 Yes	Montgomery Preservation, Inc.	
HP-216	Riggs Family Cemetery	0	0	MCCIR 2018	Approximate	0	10/15/2018 Moved	Montgomery Preservation, Inc.	
HP-217	Bronson Drive Cemetery	0	0	MCCIR 2018	Known	0	10/15/2018 Yes	Montgomery Preservation, Inc.	
HP-218	Robertson-Counselman Family Cemete	1801	1980	MCCIR 2018	Known	4	10/15/2018 Yes	Montgomery Preservation, Inc.	14/059-00X MASTER PLAN INDIVIDUAL SITES
HP-219	Waters (Zachariah) Family Burying Gro	1796	1864 Yes	MCCIR 2018	Known	5	10/15/2018 Yes	Montgomery Preservation, Inc.	
HP-22	Pearre Family Cemetery	1763	1900 Yes	MCCIR 2018	Known	12	10/15/2018 Yes	Montgomery Preservation, Inc.	
HP-220	Wood Family Cemetery	0	0 No	2006 inventory	Approximate	0	10/15/2018 Unknown	Montgomery Preservation, Inc.	
HP-221	Ashton Methodist Episcopal Church Ce	1893	2017 Yes	MCCIR 2018	Known	24	10/15/2018 Yes	Montgomery Preservation, Inc.	
HP-222	Offutt - McDonald Cemetery	0	0	MCCIR 2018	Approximate	0	10/15/2018 Unknown	Montgomery Preservation, Inc.	
HP-223	Brandenburg Family Cemetery	0	0 No	Ashes spread at sit	Approximate	0	10/15/2018 Unknown	Montgomery Preservation, Inc.	
HP-224	Homestead Cemetery	0	0	MCCIR 2018	Approximate	0	10/15/2018 Unknown	Montgomery Preservation, Inc.	
HP-225	Darnestown Baptist Church Cemetery	1848	1948	MCCIR 2018	Approximate	115	10/15/2018 Unknown	Montgomery Preservation, Inc.	
HP-226	Mt. Glory Baptist Church Cemetery	0	0 No	2006 approx point	Approximate	0	10/15/2018 Unknown	Montgomery Preservation, Inc.	Yes
HP-227	Buck Family Cemetery	0	0	MCCIR 2018	Known	1	10/15/2018 Yes	Montgomery Preservation, Inc.	
HP-228	Litton Slave Cemetery	0	0	MCCIR 2018	Approximate	0	10/15/2018 Unknown	Montgomery Preservation, Inc.	
HP-229	St Luke's Episcopal Church Memorial G	0	0 Yes	MCCIR 2018	Known	0	10/15/2018 Yes	Montgomery Preservation, Inc.	
HP-23	Chevy Chase United Methodist Church	1984	2017	MCCIR 2018	Known	190	10/15/2018 Yes	Montgomery Preservation, Inc.	
HP-230	Rockville United Methodist Church Col	1993	2018	MCCIR 2018	Known	70	10/15/2018 Yes	Montgomery Preservation, Inc.	
HP-231	Lee Family Cemetery	0	0 No	2006 GIS approx lc	Approximate	0	10/15/2018 Unknown	Montgomery Preservation, Inc.	
HP-232	Hickman - Aud Slave Cemetery	0	0	MCCIR 2018	Approximate	0	10/15/2018 Unknown	Montgomery Preservation, Inc.	17/034-00X Locational Atlas Individual Sites
HP-233	Avery Road Cemetery - Smith Family C	0	0 Yes	MCCIR 2018	Approximate	0	10/15/2018 Unknown	Montgomery Preservation, Inc.	
HP-234	Garden of Remembrance (Gan Zikaron	1990	2018	MCCIR 2018	Known	0	10/15/2018 Yes	Montgomery Preservation, Inc.	
HP-235	All Souls Cemetery	1979	2018 Yes	MCCIR 2018	Known	1050	10/15/2018 Yes	Montgomery Preservation, Inc.	
HP-236	Anderson-Watkins Slave Cemetery	0	0	MCCIR 2018	Approximate	0	10/15/2018 Unknown	Montgomery Preservation, Inc.	35/069-00X MASTER PLAN INDIVIDUAL SITES
HP-237	Brown Church Cemetery	0	0 Yes	MCCIR 2018	Known	0	10/15/2018 Yes	Montgomery Preservation, Inc.	
HP-238	Bowman-Merrick Family Cemetery	0	0	MCCIR 2018	Approximate	0	10/15/2018 Unknown	Montgomery Preservation, Inc.	
HP-239	Griffith Family Cemetery - Retirement	1797	1908 Yes	MCCIR 2018	Known	24	10/15/2018 Yes	Montgomery Preservation, Inc.	23/019-00X MASTER PLAN INDIVIDUAL SITES
HP-24	Owen Family Cemetery	1838	1894 Yes	MCCIR 2018	Known	10	10/15/2018 Yes	Montgomery Preservation, Inc.	
HP-240	Burdett-Gue Family Cemetery	1834	1868 Yes	MCCIR 2018	Known	3	10/15/2018 Yes	Montgomery Preservation, Inc.	
HP-241	Moxley (Ezekiel) Family Cemetery	1869	1877 Yes	MCCIR 2018	Known	2	10/15/2018 Yes	Montgomery Preservation, Inc.	10/003-00X Locational Atlas Individual Sites
HP-242	Brooke Family Cemetery	0	0	MCCIR 2018	Approximate	0	10/15/2018 Unknown	Montgomery Preservation, Inc.	
HP-243	Seneca Congregation Cemetery	0	0 No	No GIS data	NA	0	10/15/2018 Moved	Montgomery Preservation, Inc.	
HP-244	Brewer Family Cemetery	0	0	MCCIR 2018	Approximate	0	10/15/2018 Unknown	Montgomery Preservation, Inc.	17/006-00X Locational Atlas Individual Sites
HP-245	Chilton-Dyer Family Cemetery	1822	1851 Yes	MCCIR 2018	Known	8	10/15/2018 Yes	Montgomery Preservation, Inc.	16/010-00X Locational Atlas Individual Sites
HP-246	Briscoe Family Cemetery	0	0 No	2006 Inventory ap	Approximate	0	10/15/2018 Unknown	Montgomery Preservation, Inc.	
HP-247	Greenwood Slave Cemetery (Associati	0	0	MCCIR 2018	Approximate	0	10/15/2018 Unknown	Montgomery Preservation, Inc.	
HP-248	Unknown Family Cemetery - Franklin F	1883	0	MCCIR 2018	Known	2	10/15/2018 Yes	Montgomery Preservation, Inc.	
HP-249	Martin Family Cemetery	1926	0 Yes	MCCIR 2018	Known	2	10/15/2018 Yes	Montgomery Preservation, Inc.	
HP-25	Offutt (James) Family Cemetery	1855	1857 Yes	MCCIR 2018	Known	2	10/15/2018 Yes	Montgomery Preservation, Inc.	
HP-250	Concord Methodist Episcopal Church C	1849	1954 Yes	MCCIR 2018	Known	20	10/15/2018 Yes	Montgomery Preservation, Inc.	
HP-251	Beckwith Family Cemetery	0	0 No	2006 approx loc	Approximate	0	10/15/2018 Unknown	Montgomery Preservation, Inc.	
HP-252	Dunlop Family Cemetery	0	0	MCCIR 2018	Known	0	10/15/2018 Yes	Montgomery Preservation, Inc.	35/010-00X MASTER PLAN INDIVIDUAL SITES
HP-253	Crawford Family Cemetery	0	0 No	2006 inventory	Approximate	0	10/15/2018 Unknown	Montgomery Preservation, Inc.	19/011-00X MASTER PLAN INDIVIDUAL SITES
HP-254	Bowie Family Cemetery - ""Oatland Fa	1824	1889 Yes	MCCIR 2018	Known	11	10/15/2018 Yes	Montgomery Preservation, Inc.	
HP-255	Waters (Basil) Family Cemetery	1824	1945 Yes	MCCIR 2018	Known	11	10/15/2018 Yes	Montgomery Preservation, Inc.	
HP-256	Day Family Cemetery - Southwind Farr	0	0	MCCIR 2018	Approximate	0	10/15/2018 Unknown	Montgomery Preservation, Inc.	
HP-257	Glaze Family Cemetery	0	0 No	No GIS data	NA	0	10/15/2018 Unknown	Montgomery Preservation, Inc.	
HP-258	Carmack Family Cemetery	0	0	MCCIR 2018	Approximate	0	10/15/2018 Unknown	Montgomery Preservation, Inc.	
HP-259	Anderson Family Cemetery	0	0 No	2018 Update Coor	Approximate	0	10/15/2018 Unknown	Montgomery Preservation, Inc.	
HP-26	Offutt (Andrew) Family Cemetery	1837	1875 Yes	MCCIR 2018	Known	4	10/15/2018 Yes	Montgomery Preservation, Inc.	

HP-260	Button Farm Cemetery - Black Mill Cen	0	0	MCCIR 2018	Known	6	10/15/2018	Yes	Montgomery Preservation, Inc.	24/006-00(MASTER PLAN INDIVIDUAL SITES
HP-261	Case-Kemp Family Cemetery	0	0 Yes	MCCIR 2018	Known	0	10/15/2018	Moved	Montgomery Preservation, Inc.	
HP-262	Darne Family Cemetery - Darnestown !	0	0 Yes	MCCIR 2018	Known	0	10/15/2018	Yes	Montgomery Preservation, Inc.	
HP-263	Gartrell Slave Cemetery	0	0 No	2006 approx point	Approximate	0	10/15/2018	Unknown	Montgomery Preservation, Inc.	
HP-264	Scotland AME Zion Church Cemetery	0	0	MCCIR 2018	Known	0	10/15/2018	Yes	Montgomery Preservation, Inc.	29/015-00(MASTER PLAN INDIVIDUAL SITES
HP-265	Unknown Family Cemetery	0	0	MCCIR 2018	Known	1	10/15/2018	Yes	Montgomery Preservation, Inc.	
HP-266	Moxley Family Cemetery	0	0 No	2006 Survey	Approximate	0	10/15/2018	Unknown	Montgomery Preservation, Inc.	
HP-267	Moxley Slave Cemetery	0	0 No	2006 approx locati	Approximate	0	10/15/2018	Unknown	Montgomery Preservation, Inc.	
HP-268	Ward Family Cemetery	0	0	MCCIR 2018	Known	0	10/15/2018	Yes	Montgomery Preservation, Inc.	10/001-00(Master Plan Individual Sites
HP-269	Shelton-Smith Family Cemetery	0	0 No	2006 inventory	Approximate	0	10/15/2018	Moved	Montgomery Preservation, Inc.	
HP-27	Mobley-Magers-Arnold Cemetery	1893	1904 Yes	MCCIR 2018	Known	5	10/15/2018	Yes	Montgomery Preservation, Inc.	
HP-270	Saffell Family Cemetery	0	0	MCCIR 2018	Known	0	10/15/2018	Yes	Montgomery Preservation, Inc.	
HP-271	Clipper Family Cemetery - Stonecutter.	0	1903	MCCIR 2018	Known	0	10/15/2018	Yes	Montgomery Preservation, Inc.	Yes 17/052-00(MASTER PLAN INDIVIDUAL SITES
HP-272	Magruder (James) Family Cemetery	0	0 No	2006 inventory	Approximate	0	10/15/2018	Unknown	Montgomery Preservation, Inc.	
HP-273	Robinson-Duley Family Cemetery	0	0 No	2006 inventory	Approximate	0	10/15/2018	Unknown	Montgomery Preservation, Inc.	
HP-274	Layton Family Cemetery	0	0 No	2006 Approx loc	Approximate	0	10/15/2018	Unknown	Montgomery Preservation, Inc.	
HP-275	Edgehill Slave Cemetery	0	0	MCCIR 2018	Approximate	0	10/15/2018	Unknown	Montgomery Preservation, Inc.	23/017-00(MASTER PLAN INDIVIDUAL SITES
HP-276	Washington Aqueduct Cemetery - Ray	1855	0	MCCIR 2018	Known	12	10/15/2018	Yes	Montgomery Preservation, Inc.	
HP-277	Barnsley Family Cemetery - Avery Lodge	0	0	MCCIR 2018	Approximate	0	10/15/2018	Yes	Montgomery Preservation, Inc.	
HP-278	Walker Family Cemetery	0	0	MCCIR 2018	Known	0	10/15/2018	Yes	Montgomery Preservation, Inc.	
HP-279	Ball Family Cemetery	1855	1862 No	Approx based on 2	Approximate	2	10/15/2018	Unknown	Montgomery Preservation, Inc.	10/012-00(MASTER PLAN INDIVIDUAL SITES
HP-28	Merson Family Cemetery	1908	0 Yes	2006 inventory	Known	12	10/15/2018	Yes	Montgomery Preservation, Inc.	
HP-280	Selby Family Cemetery	0	0 No	2006 approx loc	Approximate	0	10/15/2018	Unknown	Montgomery Preservation, Inc.	
HP-281	Brighton Centennial Church Cemetery	0	0 No	No GIS data	NA	0	10/15/2018	Unknown	Montgomery Preservation, Inc.	
HP-282-A	Posey Family Cemetery - Busey Family	0	0	MCCIR 2018	Known	0	10/15/2018	Yes	Montgomery Preservation, Inc.	
HP-282-B	Posey Family Cemetery - Busey Family	0	0	MCCIR 2018	Known	0	10/15/2018	Yes	Montgomery Preservation, Inc.	
HP-283	Sugarloaf Pet Gardens	0	0	MCCIR 2018	Known	0	10/15/2018	Yes	Montgomery Preservation, Inc.	
HP-284	Plummer-Hays Family Cemetery	0	0 No	No GIS data	NA	0	10/15/2018	Unknown	Montgomery Preservation, Inc.	
HP-285	Magruder Slave Cemetery	0	0 No	MCCIR 2018	Approximate	12/15/2018	Unknown	Unknown	Montgomery Preservation, Inc.	17/002-00(MASTER PLAN INDIVIDUAL SITES
HP-286	Hempstone Family Cemetery	0	0 No	2006 Approx Loc	Approximate	0	10/15/2018	Unknown	Montgomery Preservation, Inc.	
HP-287	Grafton Duvall Family Cemetery	1890	1891 Yes	MCCIR 2018	Known	3	12/15/2018	Yes	Montgomery Preservation, Inc.	
HP-288	Keith Family Cemetery	0	0 No	No GIS data	NA	0	10/15/2018	Unknown	Montgomery Preservation, Inc.	
HP-289	Green Family Cemetery	0	0 No	No GIS data	NA	0	10/15/2018	Unknown	Montgomery Preservation, Inc.	
HP-29	Christ Episcopal Church Columbarium	1996	2017	MCCIR 2018	Known	38	10/15/2018	Yes	Montgomery Preservation, Inc.	
HP-290	Slave and Native American Cemetery	0	0 No	2006 approx loc	Approximate	0	10/15/2018	Unknown	Montgomery Preservation, Inc.	
HP-291	Rabbitt Farm Cemetery	0	0	MCCIR 2018	Approximate	12/15/2018	Unknown	Unknown	Montgomery Preservation, Inc.	
HP-292	Thompson Family Cemetery	1851	1874	MCCIR 2018	Known	0	10/15/2018	Yes	Montgomery Preservation, Inc.	
HP-294	Boswell Family Cemetery	0	0 No	2006 approx loc	Approximate	0	10/15/2018	Unknown	Montgomery Preservation, Inc.	
HP-295	Snyder Family Cemetery	0	0 No	No GIS data	NA	0	10/15/2018	Unknown	Montgomery Preservation, Inc.	
HP-296	Claggett (William) Family Cemetery	0	0 No	No GIS data	NA	0	10/15/2018	Unknown	Montgomery Preservation, Inc.	
HP-297	William Family Cemetery - Civil War Bt	0	0 No	2006 inventory ge	Approximate	0	10/15/2018	Unknown	Montgomery Preservation, Inc.	15/024-00(Locational Atlas Individual Sites
HP-298	Hilton (William Harrison) Family Ceme	1859	1896 No	MCCIR 2018	Approximate	5	12/15/2018	Unknown	Montgomery Preservation, Inc.	
HP-299	Perry Etchison Family Cemetery	0	0 No	2018 coord. 2006	Approximate	0	10/15/2018	Unknown	Montgomery Preservation, Inc.	
HP-3	Wilson Family Cemetery (Mt. Pleasant	1892	1901 Yes	MCCIR 2018	Known	2	10/15/2018	Yes	Montgomery Preservation, Inc.	
HP-30	Magruder (Robert Pottinger) Family Ce	0	0 Yes	Relocated. 2018 di	Known	0	10/15/2018	Moved	Montgomery Preservation, Inc.	
HP-300	Dawson Family Cemetery - ""Mother's	1797	1866	MCCIR 2018	Known	2	10/15/2018	Yes	Montgomery Preservation, Inc.	
HP-302	Wootton Family Cemetery	0	0	MCCIR 2018	Approximate	0	10/15/2018	Moved	Montgomery Preservation, Inc.	
HP-303	Chiswell Family Cemetery	0	0	MCCIR 2018	Approximate	0	10/15/2018	Unknown	Montgomery Preservation, Inc.	
HP-304	Gaither Family Cemetery - Rolling Acre	1843	1864	MCCIR 2018	Known	16	10/15/2018	Yes	Montgomery Preservation, Inc.	17/019-00(MASTER PLAN INDIVIDUAL SITES
HP-305	Scotland Cemeteries	0	0 No	Ottery report appr	Approximate	0	10/15/2018	Unknown	Montgomery Preservation, Inc.	
HP-306	Beall Slave Cemetery	0	0 No	2006 inventory	Approximate	0	10/15/2018	Unknown	Montgomery Preservation, Inc.	
HP-307	Griffith (Basil) Family Cemetery	0	0 Yes	2006 inventory	Known	0	10/15/2018	Yes	Montgomery Preservation, Inc.	
HP-308	Jones, Walter Gravesite	0	0 No	No GIS data	NA	0	10/15/2018	Unknown	Montgomery Preservation, Inc.	23/071-00(MASTER PLAN INDIVIDUAL SITES
HP-309	Marenn Duvall Gravesite	0	0 No	No GIS data	NA	0	10/15/2018	Unknown	Montgomery Preservation, Inc.	
HP-31	Hunt Ridge Civil War Cemetery	0	0	MCCIR 2018	Known	3	10/15/2018	Yes	Montgomery Preservation, Inc.	
HP-310	Slave? Cemetery	0	0 No	2006 inventory ap	Approximate	0	10/15/2018	Unknown	Montgomery Preservation, Inc.	
HP-311	Cecil Slave Cemetery	0	0 No	No GIS data	NA	0	10/15/2018	Unknown	Montgomery Preservation, Inc.	
HP-312	Wilson Family Cemetery	0	0 No	2006 inventory	Approximate	0	10/15/2018	Unknown	Montgomery Preservation, Inc.	
HP-313	Poole-Sellman Family Cemetery	0	0 No	No GIS data	NA	0	10/15/2018	Unknown	Montgomery Preservation, Inc.	
HP-314	Williams Family Cemetery	0	0 No	No GIS data	NA	0	10/15/2018	Unknown	Montgomery Preservation, Inc.	

HP-315	Unknown Slave Cemetery	0	0	No	No GIS data	NA	0	10/15/2018	Unknown	Montgomery Preservation, Inc.	
HP-316	Watkins Family Cemetery	0	0	No	2006 Approx Loc	Approximate	0	10/15/2018	Moved	Montgomery Preservation, Inc.	
HP-317	Johnson Family Cemetery	0	0	No	2006 Approx Loc	Approximate	0	10/15/2018	Unknown	Montgomery Preservation, Inc.	
HP-318	Shaw (Rezin) Family Cemetery	0	0	No	2006 Approx Loc	Approximate	0	10/15/2018	Unknown	Montgomery Preservation, Inc.	
HP-32	Concord & St. Andrew U.M. Memorial	1973	2017		MCCIR 2018	Known	100	10/15/2018	Yes	Montgomery Preservation, Inc.	
HP-324	Shoemaker (Isaac) Family Cemetery	0	0	Yes	2006 inventory	Known	0	10/15/2018	Yes	Montgomery Preservation, Inc.	
HP-325	Wood Family Cemetery	0	0		MCCIR 2018	Known	0	10/15/2018	Yes	Montgomery Preservation, Inc.	
HP-326	Jacob Wilbert Family Cemetery	0	0		MCCIR 2018	Known	0	10/15/2018	Yes	Montgomery Preservation, Inc.	
HP-327	White's Tabernacle No. 39 of the Ancie	0	0		MCCIR 2018	Known	more th	10/15/2018	Yes	Montgomery Preservation, Inc.	
HP-328	Solyom Family Cemetery	1870	1915		MCCIR 2018	Known	6	10/15/2018	Yes	Montgomery Preservation, Inc.	
HP-33	King (John Duckett) Family Cemetery -	1879	1909		MCCIR 2018	Known	15	10/15/2018	Yes	Montgomery Preservation, Inc.	11/010-000 MASTER PLAN INDIVIDUAL SITES
HP-330	Waters Slave Cemetery	0	0		MCCIR 2018	Known	0	10/15/2018	Yes	Montgomery Preservation, Inc.	
HP-331	Poole Family Cemetery	0	0		MCCIR 2018	Known	1	10/15/2018	Yes	Montgomery Preservation, Inc.	
HP-34	Jones (Gustavus) Family Cemetery	1853	1896	Yes	MCCIR 2018	Known	4	10/15/2018	Yes	Montgomery Preservation, Inc.	23/058-000 MASTER PLAN INDIVIDUAL SITES
HP-35	Howes Family Cemetery	0	0		MCCIR 2018	Known	0	10/15/2018	Yes	Montgomery Preservation, Inc.	
HP-36	Holland Family Cemetery - Prospect Hi	1816	1911	Yes	MCCIR 2018	Known	12	10/15/2018	Yes	Montgomery Preservation, Inc.	23/072-000 MASTER PLAN INDIVIDUAL SITES
HP-37	Higgins Family Cemetery	1816	1891	Yes	MCCIR 2018	Known	30	10/15/2018	Yes	Montgomery Preservation, Inc.	30/25 MASTER PLAN INDIVIDUAL SITES
HP-38	Hickman Family Cemetery - Edwards Fi	0	0	Yes	Loc Atlas. close to	Approximate	0	10/15/2018	Unknown	Montgomery Preservation, Inc.	Yes
HP-39	Hershey Family Cemetery	1837	1901	Yes	MCCIR 2018	Known	7	10/15/2018	Yes	Montgomery Preservation, Inc.	
HP-4	Welling Family Cemetery - Comus Seve	1944	1966	Yes	MCCIR 2018	Known	4	10/15/2018	Yes	Montgomery Preservation, Inc.	12/006-000 Locational Atlas Individual Sites
HP-40	Harding (Joseph) Family Cemetery	1852	2002	Yes	MCCIR 2018	Known	17	10/15/2018	Yes	Montgomery Preservation, Inc.	
HP-41	Harding (Andrew) Family Cemetery	1882	1907	Yes	MCCIR 2018	Known	2	10/15/2018	Yes	Montgomery Preservation, Inc.	
HP-42	Griffith Family Cemetery	1803	2005		MCCIR 2018	Known	16	10/15/2018	Yes	Montgomery Preservation, Inc.	23/017-000 MASTER PLAN INDIVIDUAL SITES
HP-43	Musser Family Cemetery - Graff Family	1823	0	Yes	MCCIR 2018	Known	5	10/15/2018	Yes	Montgomery Preservation, Inc.	
HP-44	Garrett Family Cemetery	0	0		MCCIR 2018	Known	0	10/15/2018	Yes	Montgomery Preservation, Inc.	
HP-45	Gaither (Benjamin) Family Cemetery	0	0	No	2006 inventory	Approximate	0	10/15/2018	Unknown	Montgomery Preservation, Inc.	
HP-46	Gaither - Worthington Family Cemeter	1845	1858	Yes	MCCIR 2018	Known	4	10/15/2018	Yes	Montgomery Preservation, Inc.	23/031-000 MASTER PLAN INDIVIDUAL SITES
HP-47	Fletchall Family Cemetery (Mt. Nebo C	0	0	No	2006 inventory	Approximate	0	10/15/2018	Unknown	Montgomery Preservation, Inc.	
HP-48	Emmanuel Lutheran Church Columbar	1982	2018		MCCIR 2018	Known	96	10/15/2018	Yes	Montgomery Preservation, Inc.	
HP-49	Dorsey (Joshua) Family Cemetery	0	0	No	2018 analysis of 15	Approximate	0	10/15/2018	Moved	Montgomery Preservation, Inc.	
HP-5	Waters (Washington) Family Cemetery	0	0	Yes	MCCIR 2018	Known	20	10/15/2018	Yes	Montgomery Preservation, Inc.	
HP-50	DeSellem/DeSellum Family Cemetery	1847	1891	Yes	MCCIR 2018	Known	4	10/15/2018	Yes	Montgomery Preservation, Inc.	
HP-51	Davis Family Cemetery	1828	0	Yes	MCCIR 2018	Known	8	10/15/2018	Yes	Montgomery Preservation, Inc.	23/046-000 MASTER PLAN INDIVIDUAL SITES
HP-52	Darnall Family Cemetery	1830	1848	Yes	MCCIR 2018	Known	4	10/15/2018	Yes	Montgomery Preservation, Inc.	18/021-000 MASTER PLAN INDIVIDUAL SITES
HP-53	Crabb Family Cemetery	1800	1925	Yes	MCCIR 2018	Known	17	10/15/2018	Yes	Montgomery Preservation, Inc.	22/033-000 MASTER PLAN INDIVIDUAL SITES
HP-54	Cooke Family Cemetery & Pope Farn	1805	1904	Yes	MCCIR 2018	Known	31	10/15/2018	Yes	Montgomery Preservation, Inc.	
HP-55	Carr Family Cemetery	1832	1910	Yes	MCCIR 2018	Known	20	10/15/2018	Yes	Montgomery Preservation, Inc.	
HP-56	Byrd Family Cemetery	1830	2014	Yes	MCCIR 2018	Known	8	10/15/2018	Yes	Montgomery Preservation, Inc.	18/035-000 Locational Atlas Individual Sites
HP-57	Burton Family Cemetery	1893	0	Yes	MCCIR 2018	Known	20	10/15/2018	Yes	Montgomery Preservation, Inc.	15/076-000 MASTER PLAN INDIVIDUAL SITES
HP-58	Brown (James) Family Cemetery	1854	1912	Yes	MCCIR 2018	Known	11	10/15/2018	Yes	Montgomery Preservation, Inc.	
HP-59	Bonifant Family Cemetery	1886	2013	Yes	MCCIR 2018	Known	49	10/15/2018	Yes	Montgomery Preservation, Inc.	
HP-6	Waters (Richard) Family	1810	1833	Yes	MCCIR 2018	Known	3	10/15/2018	Yes	Montgomery Preservation, Inc.	
HP-60	Beall Family Cemetery	1835	1895	Yes	MCCIR 2018	Known	7	10/15/2018	Yes	Montgomery Preservation, Inc.	27/015-000 MASTER PLAN INDIVIDUAL SITES
HP-61	Allnutt-Ayton Family Cemetery	0	0	No	No GIS data. Listec	NA	0	10/15/2018	Unknown	Montgomery Preservation, Inc.	
HP-62	Awkard Family Cemetery	1880	1883		MCCIR 2018	Approximate	5	10/15/2018	Unknown	Montgomery Preservation, Inc.	
HP-63	Aud Family Cemetery	0	0		MCCIR 2018	Known	0	10/15/2018	Yes	Montgomery Preservation, Inc.	
HP-64	Allen Chapel A.M.E. Church Cemetery - P	1894	2000	Yes	MCCIR 2018	Known	40	10/15/2018	Yes	Montgomery Preservation, Inc.	
HP-65	Asbury United Methodist Church Cemi	1903	2006	Yes	MCCIR 2018	Known	53	10/15/2018	Yes	Montgomery Preservation, Inc.	
HP-66	Ash Memorial Cemetery	1850	2018	Yes	MCCIR 2018	Known	500	10/15/2018	Yes	Montgomery Preservation, Inc.	
HP-67	Bethesda Meeting House Cemetery	1820	1942	Yes	MCCIR 2018	Known	110	10/15/2018	Yes	Montgomery Preservation, Inc.	
HP-68	Bethesda United Methodist Church Ce	1847	2018	Yes	MCCIR 2018	Known	838	10/15/2018	Yes	Montgomery Preservation, Inc.	
HP-69	Boyds Presbyterian Church Cemetery	1874	2018	Yes	MCCIR 2018	Known	300	10/15/2018	Yes	Montgomery Preservation, Inc.	18/008-000 MASTER PLAN HISTORIC DISTRICT
HP-7	Waters Family Cemetery - Belmont Ce	1856	1891	Yes	MCCIR 2018	Known	12	10/15/2018	Yes	Montgomery Preservation, Inc.	
HP-70	Brooke Grove United Methodist Churc	1883	2018	Yes	MCCIR 2018	Known	500	10/15/2018	Yes	Montgomery Preservation, Inc.	14/039-000 Locational Atlas Individual Sites
HP-71	Clarksburg United Methodist Church C	1811	2017	Yes	MCCIR 2018	Known	520	10/15/2018	Yes	Montgomery Preservation, Inc.	13/010-000 MASTER PLAN HISTORIC DISTRICT
HP-72	Colesville Cemetery / Andrew Chapel P	1869	2018		MCCIR 2018	Known	900	10/15/2018	Yes	Montgomery Preservation, Inc.	
HP-73	Columbia Primitive Baptist Church Cen	1883	2014	Yes	MCCIR 2018	Known	25	10/15/2018	Yes	Montgomery Preservation, Inc.	
HP-74	Church of the Ascension Columbarium	2007	2017		MCCIR 2018	Known	125	10/15/2018	Yes	Montgomery Preservation, Inc.	
HP-75	Damascus United Methodist Church Ce	1865	2018	Yes	MCCIR 2018	Known	1100	10/15/2018	Yes	Montgomery Preservation, Inc.	
HP-76	Darnestown Presbyterian Church Cemi	1836	2016	Yes	MCCIR 2018	Known	1295	10/15/2018	Yes	Montgomery Preservation, Inc.	24/019-000 MASTER PLAN INDIVIDUAL SITES

HP-77	Derwood Cemetery - Ricketts Family C	1880	2015	Yes	MCCIR 2018	Known	110	10/15/2018	Yes	Montgomery Preservation, Inc.	
HP-78	Faith UM Church Memorial Garden	1983	2018		MCCIR 2018	Known	96	10/15/2018	Yes	Montgomery Preservation, Inc.	
HP-79	Elijah United Methodist Church Cemeter	1871	2014	Yes	MCCIR 2018	Known	90	10/15/2018	Yes	Montgomery Preservation, Inc.	17/018-00(MASTER PLAN INDIVIDUAL SITES
HP-8	Ward Family Cemetery	1880	1935	Yes	MCCIR 2018	Known	5	10/15/2018	Yes	Montgomery Preservation, Inc.	
HP-80	Emory Grove UM Church Cemetery	1890	2016	Yes	MCCIR 2018	Known	150	10/15/2018	Yes	Montgomery Preservation, Inc.	
HP-81	Emory Grove UM Church Cemetery	0	1923	Yes	MCCIR 2018	Known	1	10/15/2018	Yes	Montgomery Preservation, Inc.	
HP-82	Flower Hill Church of the Brethren Cen	1933	2018	Yes	MCCIR 2018	Known	100	10/15/2018	Yes	Montgomery Preservation, Inc.	
HP-83	Forest Oak Cemetery	1877	2018	Yes	MCCIR 2018	Known	1800	10/15/2018	Yes	Montgomery Preservation, Inc.	
HP-84	Sandy Spring Friends Meeting House C	1754	2018	Yes	MCCIR 2018	Known	560	10/15/2018	Yes	Montgomery Preservation, Inc.	28/011-00(MASTER PLAN INDIVIDUAL SITES
HP-85	Friendship United Methodist Church C	1885	2014	Yes	MCCIR 2018	Known	220	10/15/2018	Yes	Montgomery Preservation, Inc.	15/115-00(Locational Atlas Individual Sites
HP-86	Gate of Heaven Cemetery	0	2018	Yes	MCCIR 2018	Known	32000	10/15/2018	Yes	Montgomery Preservation, Inc.	
HP-87	Germantown Baptist Church Cemetery	1860	2018		MCCIR 2018	Known	191	10/15/2018	Yes	Montgomery Preservation, Inc.	
HP-88	Good Hope Union United Methodist Cl	1795	2008	Yes	MCCIR 2018	Known	150	10/15/2018	Yes	Montgomery Preservation, Inc.	28/031-00(MASTER PLAN INDIVIDUAL SITES
HP-89	Goshen Methodist Episcopal Church Ci	1844	2017		MCCIR 2018	Known	300	10/15/2018	Yes	Montgomery Preservation, Inc.	14/041-00(MASTER PLAN INDIVIDUAL SITES
HP-9	Lytton/Litton Family Cemetery - Twinb	1802	0	Yes	MCCIR 2018	Known	6	10/15/2018	Yes	Montgomery Preservation, Inc.	
HP-90	Grace Episcopal Church Cemetery	1846	2015	Yes	MCCIR 2018	Known	310	10/15/2018	Yes	Montgomery Preservation, Inc.	36/004-00(Locational Atlas Historic District
HP-900	Green Farm Cemetery	0	0	No	GPS points, oral hi	Approximate		11/7/2018	Unknown	M-NCPPC Historic Preservation	
HP-91	Haiti Cemetery	1868	1983	Yes	MCCIR 2018	Known	33	10/15/2018	Yes	Montgomery Preservation, Inc.	
HP-92	Hawlings River Chapel of Ease Cemete	1862	1898		MCCIR 2018	Known	4	10/15/2018	Yes	Montgomery Preservation, Inc.	
HP-93	Hermon Presbyterian Church Cemeter	1880	2013	Yes	MCCIR 2018	Known	54	10/15/2018	Yes	Montgomery Preservation, Inc.	29/037-00(MASTER PLAN INDIVIDUAL SITES
HP-94	Howard Chapel Cemetery	1834	1942	Yes	MCCIR 2018	Known	40	10/15/2018	Yes	Montgomery Preservation, Inc.	23/011-00(MASTER PLAN INDIVIDUAL SITES
HP-95	Hyattstown Christian Church Cemetery	1813	2018	Yes	MCCIR 2018	Known	0	10/15/2018	Yes	Montgomery Preservation, Inc.	
HP-96	Hyattstown United Methodist Church	1846	2016	Yes	MCCIR 2018	Known	500	10/15/2018	Yes	Montgomery Preservation, Inc.	10/059-00(MASTER PLAN HISTORIC DISTRICT
HP-97	Jerusalem Baptist Church Cemetery	1934	2016	Yes	MCCIR 2018	Known	40	10/15/2018	Yes	Montgomery Preservation, Inc.	
HP-98	Jerusalem Baptist Church Cemetery	0	0	Yes	MCCIR 2018	Known	80	10/15/2018	Yes	Montgomery Preservation, Inc.	
HP-99	John Wesley United Methodist Church	1871	2014	Yes	2006 inventory	Known	275	10/15/2018	Yes	Montgomery Preservation, Inc.	

Sensitive Native American Burial Sites

Site Number	SITENAME	ALTNAME	SITETYPE
18MO3	Shepard		Late Woodland village and burials
18MO364	Cairn		Late Woodland cairn and burial
18MO13	Mason Island II		Late Woodland village
18MO9	Winslow		Early, Middle, & Late Archaic short-term camp, Early & Late Woodland villages, Late 18th-Early
18MO1	Hughes		Late Woodland village and burials; Late Archaic and Early & Middle Woodland smaller compone
18MO20	Selden Island I	Walker Village	Late Woodland palisaded village
18MO391	Harrison Island		Late Woodland possible village



MONTGOMERY COUNTY CEMETERY INVENTORY REVISITED

BURIAL SITE INFORMATION

Name: Prather Family Cemetery	Inventory ID: 020
Alternate name:	
Address: Meadowside Nature Center, 5100 Meadowside Lane, Rockville	
Website:	
GPS coordinates: Latitude: 39.113350	Longitude: -77.114757
FindaGrave: https://www.findagrave.com/cemetery/2535578	

BURIAL SITE TYPE

Category: ☐ Religious ☐ Community ☒ **Family** ☐ African American ☐ Other:

BURIAL SITE EVALUATION

Setting/location description: <input type="checkbox"/> Rural <input type="checkbox"/> Urban <input checked="" type="checkbox"/> Suburban <input checked="" type="checkbox"/> Wooded <input type="checkbox"/> Other:		
General condition (See conditions sheet): <input type="checkbox"/> Excellent <input type="checkbox"/> Good <input type="checkbox"/> Fair <input checked="" type="checkbox"/> Poor <input type="checkbox"/> None		
Is there a formal entrance? <input type="checkbox"/> Yes <input checked="" type="checkbox"/> No	Accessibility: <input type="checkbox"/> Inaccessible <input checked="" type="checkbox"/> By foot <input type="checkbox"/> By car	
Is cemetery active (recent burials)? <input type="checkbox"/> Yes <input checked="" type="checkbox"/> No	Is there a cemetery sign: <input type="checkbox"/> Yes <input checked="" type="checkbox"/> No	
Is cemetery being maintained? <input type="checkbox"/> Yes <input type="checkbox"/> Minimal <input checked="" type="checkbox"/> No (If yes, note caretaker's name below)		
Are there visible markers? <input checked="" type="checkbox"/> Yes <input type="checkbox"/> No	Approximate number of burials/visible markers: 10	Date ranges: 1838-1859

Description: (markers, materials, arrangement, landscaping/vegetation, fence, paths and roads, etc.)

- **Located less than a mile from the nature center. Difficult to locate in woods – overgrown with underbrush.**
- **Perimeter fence line of upright stones which are sinking.**
- **Obelisk monument is deteriorating.**
- **Possible burial depressions with illegible field stones.**

BURIAL SITE CONTACT

Name: Maryland-National Park and Planning Commission		
Relationship to burial site: Montgomery Parks, Manager	Advocacy contact: Jamie Kuhns, History Specialist	
Address: 9500 Brunett Avenue		Phone: 301-650-4362
City: Silver Spring	State: MD	ZIP Code: 20901

BURIAL SITE SURVEYOR

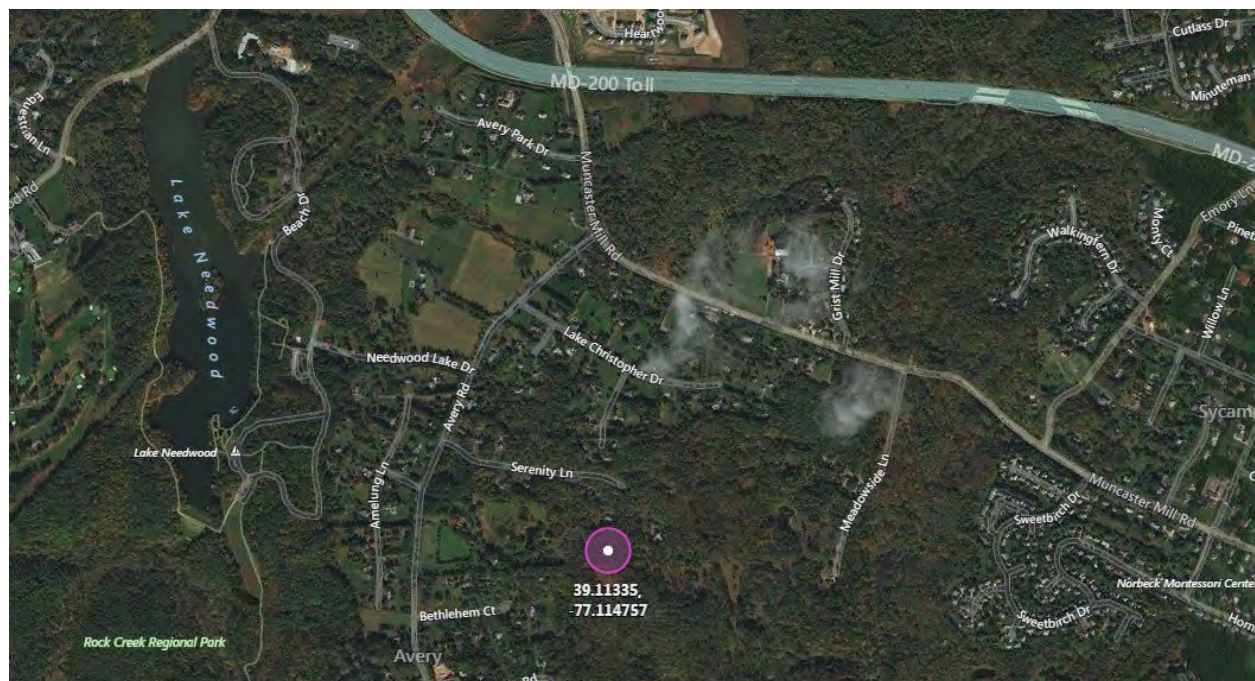
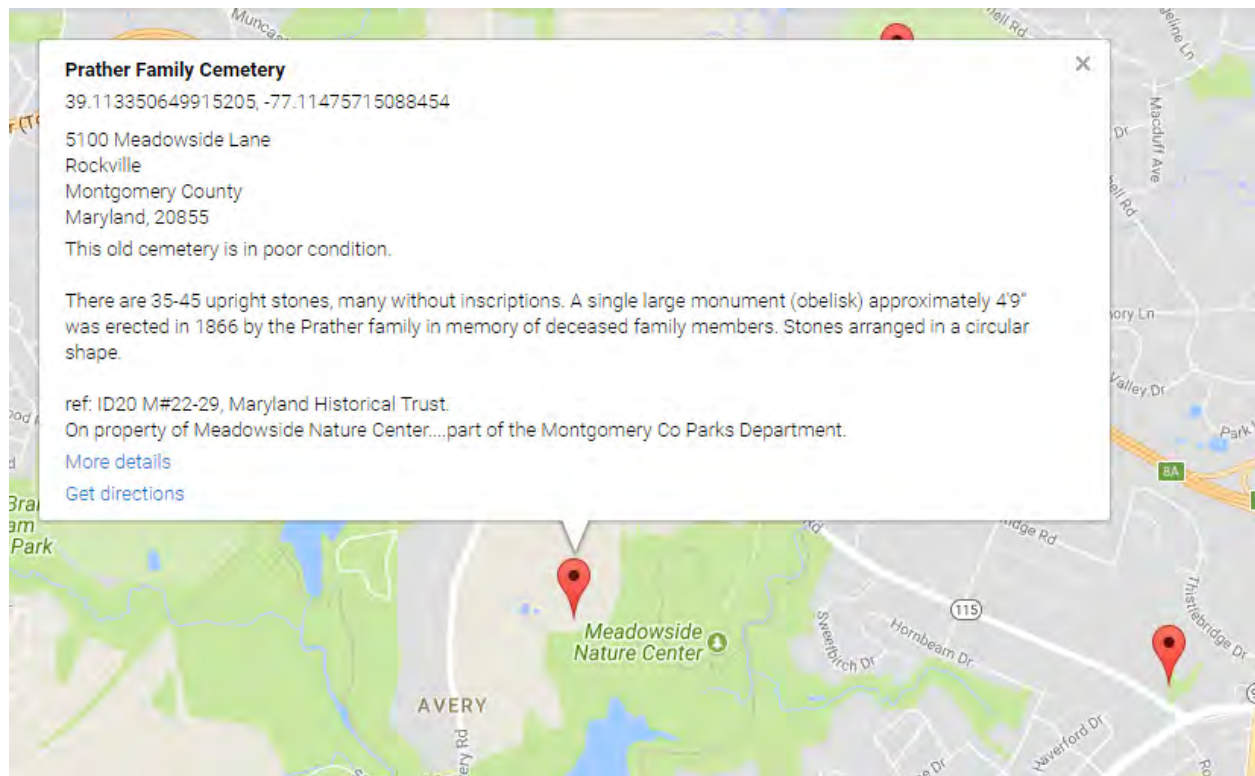
Name: Susan Potter	Survey Date: 3/12/2018	Time spent:
Address:		Phone:
Photographer: Susan Potter		

COMMENTS

Suggestions for follow-up:
• Arborist to determine if dead tree in proximity to obelisk and 2 headstones should be removed
Safety issues, invasive vegetation removal, fence removal/restoration, signage, trash, erosion, vandalism:
• No vandalism – hard to see and not near roadway or path
• Fallen trees and underbrush
Anything of significance about this cemetery?
The Prather family came from England and farmed a large tract of land, called Plain Dealing, which included the current site of the graveyard. Because the plantation was large, the Prathers probably owned many slaves. After the Civil War, many of the slaves took the Prather last name and settled in nearby Prathertown, located in Gaithersburg. The graveyard is untended and overgrown and many stones are without inscriptions.

SOURCES

- <http://prathergenealogy.com/defaultmain.htm>
- <https://www.montgomeryparks.org/parks-and-trails/rock-creek-regional-park/meadowside-nature-center/history/>
- http://www.montgomerypreservation.org/wp-content/uploads/2018/06/Prather-Family_MGS2018.pdf



Montgomery County Cemetery Inventory Photograph Log

Cemetery Name: Prather Family Cemetery		Inventory ID: 020
Photographer: Susan Potter		Date: 3/12/2018
Time	Photo No.	Description and direction you are facing (Ex: detail of wall around Carr plot facing North)
	1	Entry from service road used by WSSC
	2	Possible stone perimeter fence line
	3	Obelisk monument



1. Entry from service road used by WSSC



2. Possible stone perimeter fence line



3. Obelisk monument

- The first Prather at "Plain Dealing", Aaron Allen Prather: <https://www.wikitree.com/wiki/Prather-68>
- Aaron Allen Prather's Oath of Allegiance in 1776: http://services.dar.org/Public/DAR_Research/search_adb/?action=full&p_id=A092389
- Zachariah Prather's Revolutionary War record: <https://www.fold3.com/search#query=William+prather&w=h1Lf4Q2MgKX7ggrxz>

Attachment C: Draft Burial Sites Inventory Change Log

Date	Site	Change	Reason
3/12/2019	Cemetery sites on NPS land	Flagged as sensitive	NPS request
3/13/2019	Clipper Family	Moved location to C&O Park	GPS readings taken on 3/9/19 show location was mis-mapped
3/14/2019	248 Unknown family	Moved location	Review of site plans on file show location was mis-mapped
3/14/2019	HP-16 Ricketts	Moved location	To match cemetery property call-out on MPI form (their GIS point slightly off)
3/14/2019	Hickman Family	Moved location	Staff review of site location shows it was mis-mapped.
3/14/2019	Jerusalem Church Cemetery	Moved location	Point mis-mapped very slightly on neighboring property
3/14/2019	Sugar Loaf Mountain Chapel Cemetery - Sugarloaf Mountain Christian Community Church	Moved location	point was across street from correct location
3/14/2019	Isaac Shoemaker Family Cemetery	Moved location	point was very slightly off, but across property line from what MPI's deed research showed
4/2/2019	Magruder slave cemetery	removed owner name and address from form	Owner didn't want name and address listed on the form
4/19/2019	Barnsley Family Cemetery - Avery Lodge Cemetery	changed from "known" to "approximate"	Property owner has additional information on the history of the site that puts the location in doubt
4/19/2019	St. Francis Episcopal Church Columbarium	Changed latest date to 2019	emailed request from columbarium manager