



**MONTGOMERY COUNTY DEPARTMENT OF PARKS**  
THE MARYLAND-NATIONAL CAPITAL PARK AND PLANNING COMMISSION

**M-NCPPC Montgomery County Park Directive**

**SUBJECT:** E-Bike and E-Scooter Pilot Program No. MC-19-001

**AUTHORITY:** M-NCPPC Park Rules and Regulations, Chapter I, Section 3

**RELATED:** N/A.

**EFFECTIVE:** June 1, 2019

**EXPIRATION:** December 1, 2019

Pursuant to Chapter I, Section 3, of the M-NCPPC Park Rules & Regulations (2017), the Director of the Montgomery County Department of Parks issues the following Park Directive:

- *An Electric Bicycle is defined in Park Rules Chapter II, Section 1(G) as a vehicle that (1) is designed to be operated by human power with the assistance of an electric motor; (2) is equipped with fully operable pedals; (3) has two or three wheels; and (4) has a motor with a rating of 500 watts or less.*
- *For the purposes of this Park Directive, an Electric Scooter is defined as a vehicle that (1) is designed to transport only the operator; (2) weighs less than 100 pounds; (3) has single wheels in tandem or a combination of one or two wheels at the front and rear of the vehicle; (4) is equipped with handlebars and a platform designed to be stood on while riding; (5) is solely powered by an battery-powered electric motor and human power; and (6) is capable of operating at a speed of up to 25 mph.*
- *Park Rules Chapter V, Section 14(A) prohibits the use of Electric Bicycles and Electric Scooters on Department of Parks property except as authorized by permit or in areas where expressly designated by Park Directive and posted accordingly.*
- *To evaluate the use of Electric Bicycles and Electric Scooters on certain hard-surface hiker-biker trails on Montgomery County Department of Parks property, this Park Directive hereby authorizes a six-month pilot program permitting the use of Electric Bicycles as defined in the Park Rules, as well as Electric Scooters as defined above, on certain hiker-biker trails located on land devoted to park or recreation uses and owned, operated, or established otherwise by the Maryland-National Capital Park & Planning Commission in Montgomery County, Maryland (“M-NCPPC Montgomery County Parkland”). The specific trails are noted below.*
- *This pilot program shall begin on June 1, 2019 and end on December 1, 2019 with 6-month extension option.*

- While the pilot program is effective, *Electric Bicycles and Electric Scooters*, as defined above, may be used in the same manner as non-motorized bicycles on certain hard-surface hiker-biker trails on M-NCPPC Montgomery County Parkland (see Figure. A).
- Trails to be included in the pilot program are:
  - *Rock Creek Trail (hard surface)*
  - *Sligo Creek Trail (within Montgomery County, not into Prince Georges) (hard surface)*
  - *Matthew Henson Trail (hard surface)*
  - *Long Branch Trail (hard surface)*
  - *Northwest Branch Trail Paved Sections (within Montgomery County, not into Prince Georges) (hard surface)*

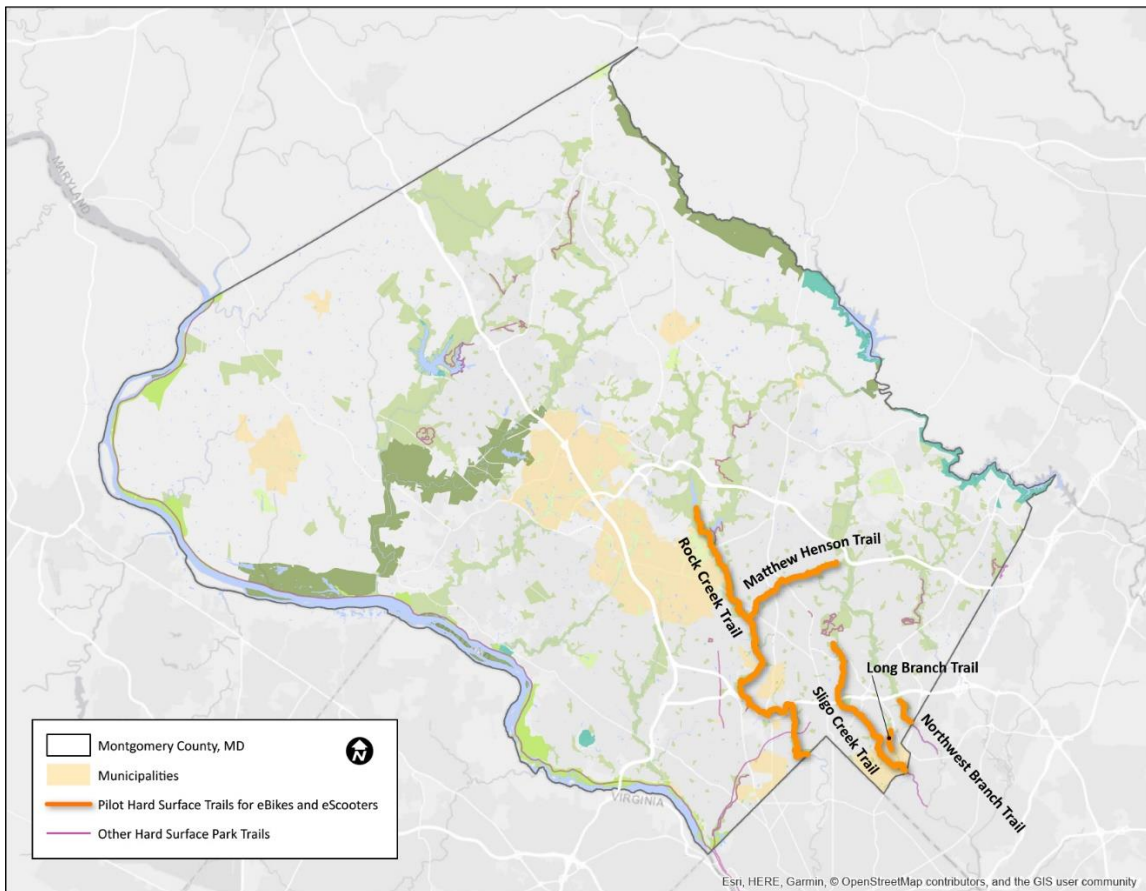


Figure A: Applicable Hiker-Biker Trails for Parks' E-bikes and E-scooters pilot program.

- Except as described in this Park Directive, all other restrictions on the use of motorized vehicles on M-NCPPC Montgomery County Parkland remain in effect.

Authorized and approved as provided under the Park Rules and Regulations adopted on March 15, 2017 by the Maryland-National Capital Park and Planning Commission:

**SIGNATURE:**



Michael F. Riley, Director  
Montgomery County Department of Parks

**DATE:**

May 9, 2019

This Park Directive was published with the Agenda of the Montgomery County Planning Board for its regular meeting held on May 9, 2019.

This Park Directive was published on the website of the Montgomery County Department of Parks on April 29, 2019.