



Civil Engineers
Land Planners
Landscape Architects
Land Surveyors

9220 Wightman Road, Suite 120
Montgomery Village, MD 20886
Phone: 301.670.0840
www.mhgas.com

Copyright © 2018 by Macris, Hendricks & Glascock, P.A. All Rights Reserved

DATE: 2/21/18

MD DEPT. OF NATURAL RESOURCES
COMAR 86.19.02.01

Qualified Professional Certification
I hereby certify that the information shown herein is correct and that this plan has been prepared in accordance with the requirements of the existing state and city forest conservation legislation.

OWNER

MHP FOREST GLEN, LLC
12200 TECH ROAD, SUITE 250
SILVER SPRING, MD 20904
CONTACT: PRAJ KASBEKAR
(301) 622-2400
PKASBEKAR@MHPARTNERS.ORG

LAND USE ATTORNEY

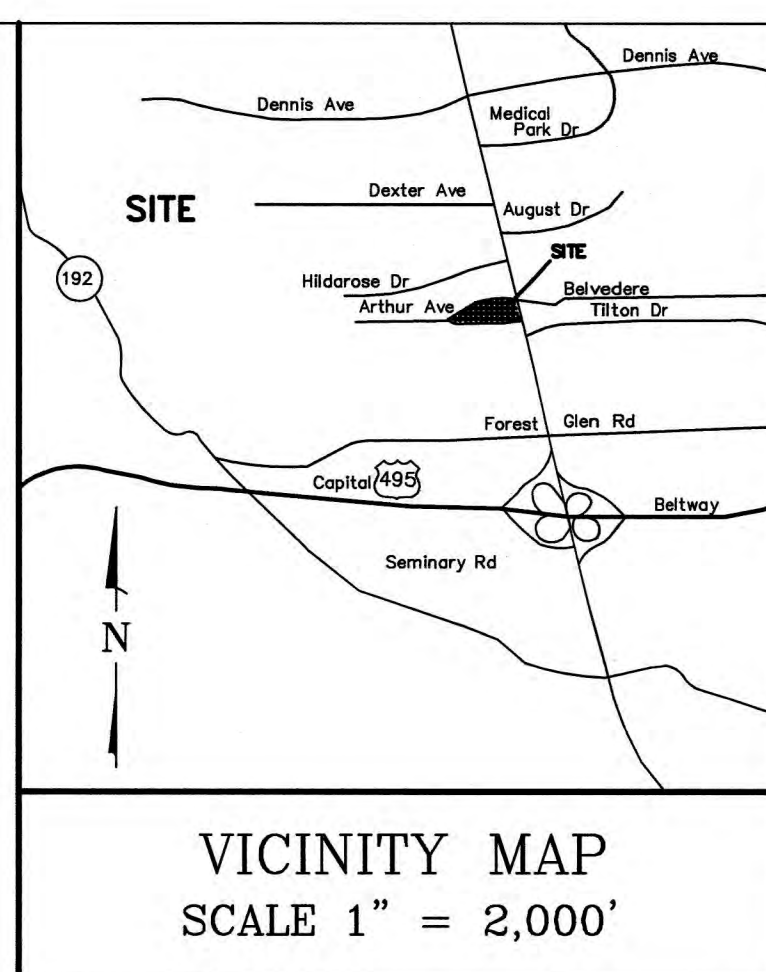
BALLARD SPAHR, LLP
1909 K STREET, NW, 12TH FLOOR
WASHINGTON, DC 20006
CONTACT: EMILY VAJAS
(202) 661-2238
VAJASE@BALLARDSPAHR.COM

ARCHITECT

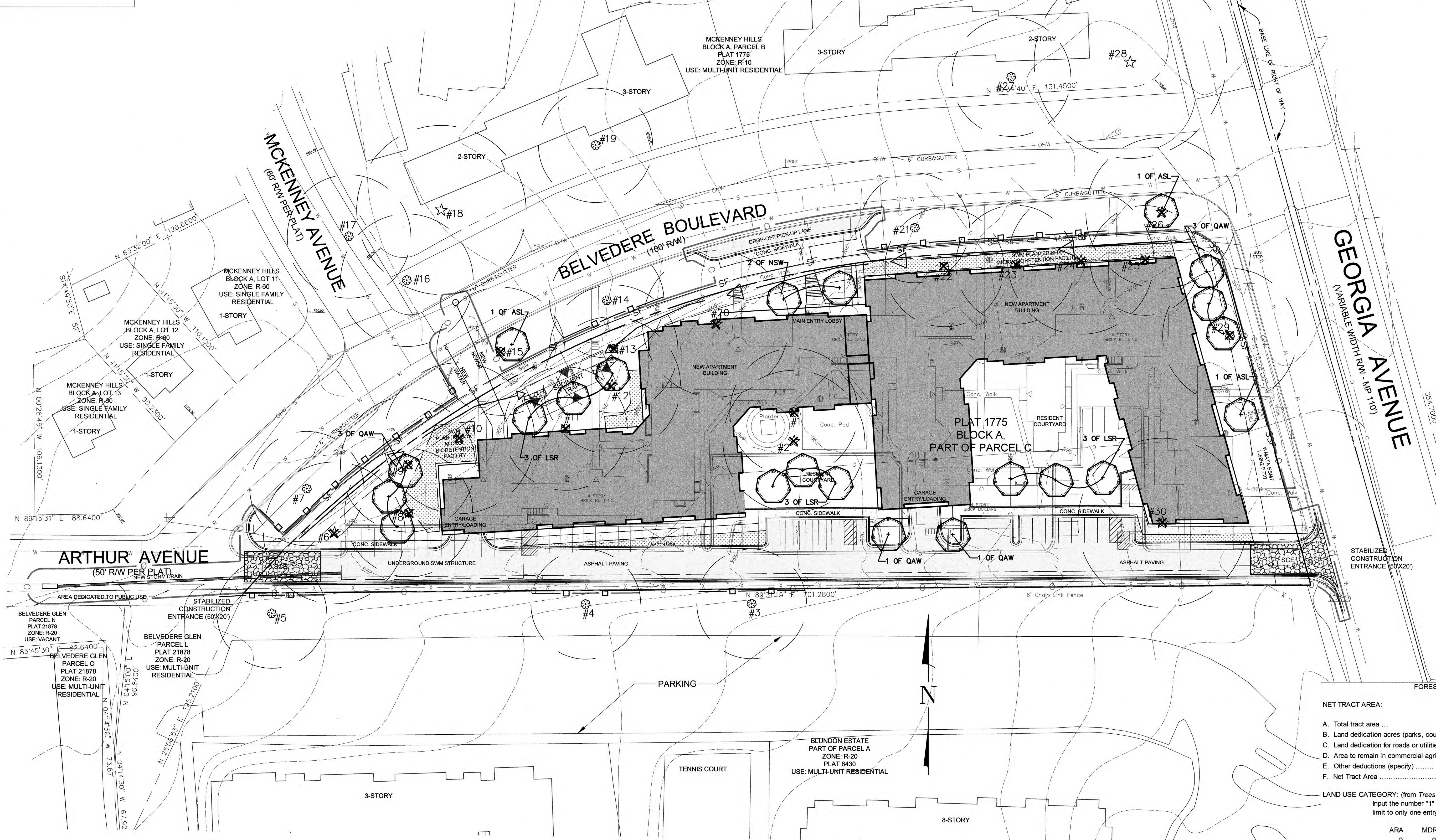
GRIMM AND PARKER
11720 BELTSVILLE DRIVE
SUITE 600
CALVERTON, MD 20705
(301) 596-1000

LAND PLANNER

TOWNSCAPE DESIGN, LLC
6030 DAYBREAK CIRCLE
SUITE A150
CLARKSVILLE, MD 21029
CONTACT: DAVID AGER
(410) 531-2621
DAGER@TOWNSCAPEDESIGN.COM



VICINITY MAP
SCALE 1" = 2,000'



FOREST CONSERVATION WORKSHEET
Forest Glen Apartments

NET TRACT AREA:

A. Total tract area ...	2.98
B. Land dedication acres (parks, county facility, etc.) ...	0.00
C. Land dedication for roads or utilities (not being constructed by this plan) ...	0.00
D. Area to remain in commercial agricultural production/use ...	0.00
E. Other deductions (specify) ...	0.00
F. Net Tract Area ...	2.98

LAND USE CATEGORY: (from Trees Technical Manual)
Input the number "1" under the appropriate land use, limit to only one entry.

ARA	MDR	IDA	HDR	MPD	CIA
0	0	0	1	0	0

G. Afforestation Threshold ...	15%	x F =	0.45
H. Conservation Threshold ...	20%	x F =	0.60

EXISTING FOREST COVER:

I. Existing forest cover ...	0.00
J. Area of forest above afforestation threshold ...	0.00
K. Area of forest above conservation threshold ...	0.00

BREAK EVEN POINT:

L. Forest retention above threshold with no mitigation ...	0.00
M. Clearing permitted without mitigation ...	0.00

PROPOSED FOREST CLEARING:

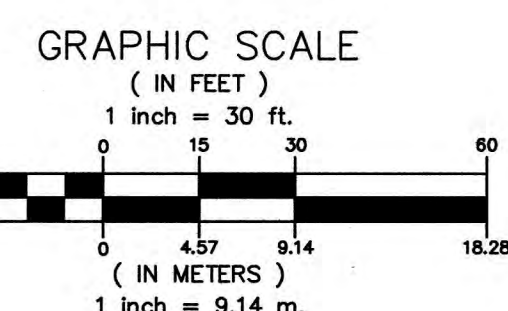
N. Total area of forest to be cleared ...	0.00
O. Total area of forest to be retained ...	0.00

PLANTING REQUIREMENTS:

P. Reforestation for clearing above conservation threshold ...	0.00
Q. Reforestation for clearing below conservation threshold ...	0.00
R. Credit for retention above conservation threshold ...	0.00
S. Total reforestation required ...	0.00
T. Total afforestation required ...	0.45
U. Credit for landscaping (may not exceed 20% of "S") ...	0.00
V. Total reforestation and afforestation required ...	0.45

Worksheet updated 8/5/2002

0.45 acre Forest Conservation requirement to be met in an off-site forest mitigation bank.



ON-SITE SPECIMEN TREE MITIGATION LIST					
KEY	QTY	BOTANICAL NAME	COMMON NAME	CAL	ROOT
LSR	9	Liquidambar styraciflua 'Rotundiloba'	Fruitless Sweetgum	3-3 1/2"	B&B
NSW	2	Nyssa sylvatica 'Wildfire'	Wildfire Black Gum	3-3 1/2"	B&B
ASL	3	Acer saccharum 'Legacy'	Legacy Sugar Maple	3-3 1/2"	B&B
QAW	8	Quercus alba	White Oak	3-3 1/2"	B&B
TOTAL SPECIMEN TREE MITIGATION PROVIDED				66	

FOREST CONSERVATION NOTES:

- SUBJECT PROPERTY: PART OF PARCEL C BLOCK A, MCKENNEY HILLS, PLAT 1775
- ADDRESS: 2106 BELVEDERE BLVD, SILVER SPRING, MD 20904
- TAX ACCOUNT: 13-01125413
- TOTAL TRACT AREA: 2.63 ACRES
- WATERSHED: LOWER ROCK CREEK USE: I
- SPECIAL PROTECTION AREA: NA
- PRIMARY MANAGEMENT AREA: NA
- NO WETLANDS, FLOODPLAINS, STREAMS, OR ASSOCIATED BUFFERS EXIST ON THE PROPERTY.
- NO RARE, THREATENED, OR ENDANGERED SPECIES WERE OBSERVED ON THE PROPERTY.
- THE SITE IS NOT LISTED ON THE LOCATIONAL ATLAS AND INDEX OF HISTORIC SITES.
- FIELD WORK CONDUCTED ON 12/16/18
- ON-SITE TOPOGRAPHY BY MACRIS, HENDRICKS, & GLASCOCK P.A.
- OFF-SITE TOPOGRAPHY FROM MNCPPC 212NW02
- NO FOREST EXISTS ON-SITE.
- CURRENT ZONE: R-10

FOREST CONSERVATION DATA TABLE			
DESCRIPTION	SIZE	STATUS	MITIGATION
Total Tract Area (includes 0.35 acres of off-site disturbance)	2.63 Acres		
Tract remaining in Ag use	0.00 Acres		
Road & Utility ROW (unimproved)	0.00 Acres		
Existing Forest	0.00 Acres		
Total Forest Retention	0.00 Acres		
Total Forest Cleared	0.00 Acres		
Land Use Category			
Afforestation Threshold	15%		
Reforestation Threshold	20%		
Average Buffer Width	NA		
Acres of Forest in:			
Retained			
Cleared			
Planted			
TOTAL	259'		

TREE TABLE					
TREE ID#	COMMON NAME	BOTANICAL NAME	SIZE (DIAMETER)	CONDITION	DISPOSITION
1	TULIP POPLAR	LIRIODENDRON TULIPIFERA	28	Fair/Good - DW	REMOVE
2	TULIP POPLAR	LIRIODENDRON TULIPIFERA	31	Fair - DW, canopy damage, vines	REMOVE
3	WHITE MULBERRY	MORUS ALBA	24	Poor - trunk damage, vines, DW	SAVE
4	BLACK WALNUT	JUGLANS NIGRA	24	Fair/Good - DW, vines	SAVE
5	WHITE MULBERRY	MORUS ALBA	24	Poor - DW, damage	SAVE
6	SYCAMORE	PLATANUS OCCIDENTALIS	31	Fair/Poor - Damage trunk, would closure, root damage, epicormic growth	REMOVE
7	SYCAMORE	PLATANUS OCCIDENTALIS	25	Fair/Good - root damage, wound closure	SAVE
8	SYCAMORE	PLATANUS OCCIDENTALIS	28	Fair - DW, leans	REMOVE
9	SYCAMORE	PLATANUS OCCIDENTALIS	29.5	Fair/Good - DW, canopy damage	REMOVE
10	SYCAMORE	PLATANUS OCCIDENTALIS	33	Fair - vines, DW	SAVE
11	RED MAPLE	ACER RUBRUM	27	Fair/Good - DW, vines	REMOVE
12	SYCAMORE	PLATANUS OCCIDENTALIS	30	Poor - dieback, DW, vines, rot, main leader gone	REMOVE
13	SYCAMORE	PLATANUS OCCIDENTALIS	28	Fair - wound closure, DW, saproxy holes, lean	REMOVE
14	SYCAMORE	PLATANUS OCCIDENTALIS	25	Fair/Good - DW, wound closure	SAVE
15	SYCAMORE	PLATANUS OCCIDENTALIS	28	Fair - canopy damage, DW	REMOVE
16	RED MAPLE	ACER RUBRUM	29	Poor - cavity, DW	SAVE
17	RED MAPLE	ACER RUBRUM	27	Fair - DW, root flare swollen, root damage	SAVE
18	SYCAMORE	PLATANUS OCCIDENTALIS	37	Fair/Poor - DW, canopy damage, epicormic growth	SAVE
19	EASTERN HEMLOCK	TSUGA CANADENSIS	25	Fair - DW, leans	SAVE
20	SYCAMORE	PLATANUS OCCIDENTALIS	32	Poor - topped, vines, DW, rot	REMOVE
21	SYCAMORE	PLATANUS OCCIDENTALIS	24	Good - DW	SAVE
22	SYCAMORE	PLATANUS OCCIDENTALIS	26	Fair - DW, canopy damage	REMOVE
23	SYCAMORE	PLATANUS OCCIDENTALIS	26	Fair/Good - DW	REMOVE
24	SYCAMORE	PLATANUS OCCIDENTALIS	32	Poor - Bark loss, major DW	REMOVE
25	SYCAMORE	PLATANUS OCCIDENTALIS	24	Fair - DW, heavy vines	REMOVE
26	SYCAMORE	PLATANUS OCCIDENTALIS	33	Fair - root flare issues, DW, poorly pruned	REMOVE
27	SYCAMORE	PLATANUS OCCIDENTALIS	26	Fair - partly topped	SAVE
28	AMERICAN BEECH	FAGUS GRANDIFOLIA	42	Fair - significant DW, cavity	SAVE
29	SYCAMORE	PLATANUS OCCIDENTALIS	29.5	Fair - root damage, epicormic growth, DW, vines	REMOVE
30	SYCAMORE	PLATANUS OCCIDENTALIS	37	Poor - DW, heavily pruned, at 3 main leaders topped	REMOVE
				259' 4" = 64.76' Planted with 3" DBH trees = 22 trees to be planted for variance mitigation	

NOTE: SPECIMEN TREE #28 IS IN RIGHT OF WAY AND THEREFORE TWO VARIANCE MITIGATION TREES ARE PROPOSED TO BE PLANTED BACK IN THE RIGHT OF WAY.

PROJECT NO. 18.197.11
SHEET NO. 1 OF 1