

**DEVELOPER'S CERTIFICATE**

The undersigned agrees to execute all the features of Approved Final Forest Conservation Plan No. SC2020007, including financial bonding, forest planting, maintenance, and all other applicable agreements.

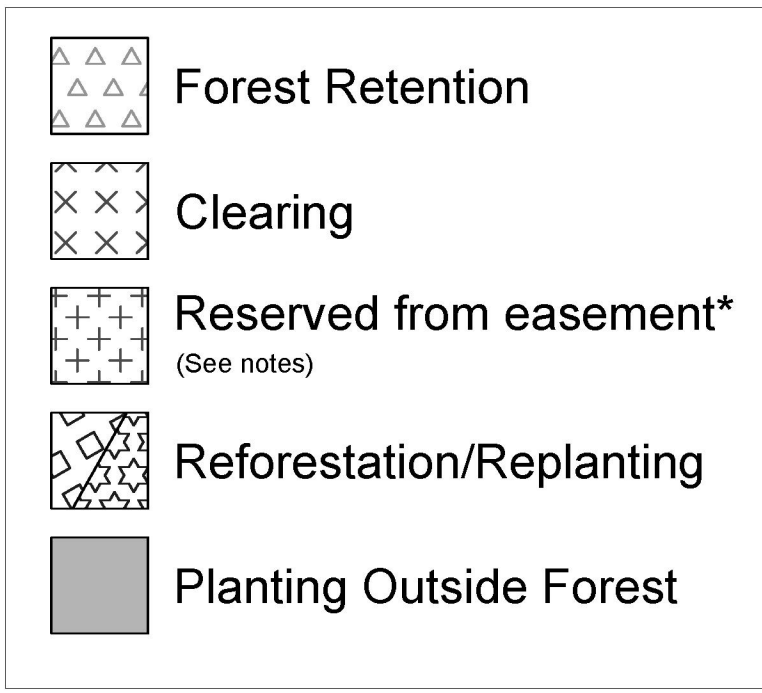
Developer's Name: Audubon Naturalist Society  
Printed Company Name

Contact Person or Owner: Bryan Seipp  
Printed Name

Address: 3290 N Ridge Rd., Suite #290  
Ellicott City, MD 21043

Phone and Email: 410-461-8323, ext. 3206; bts@cwp.org

Signature: *[Signature]*



**REFORESTATION PLAN**

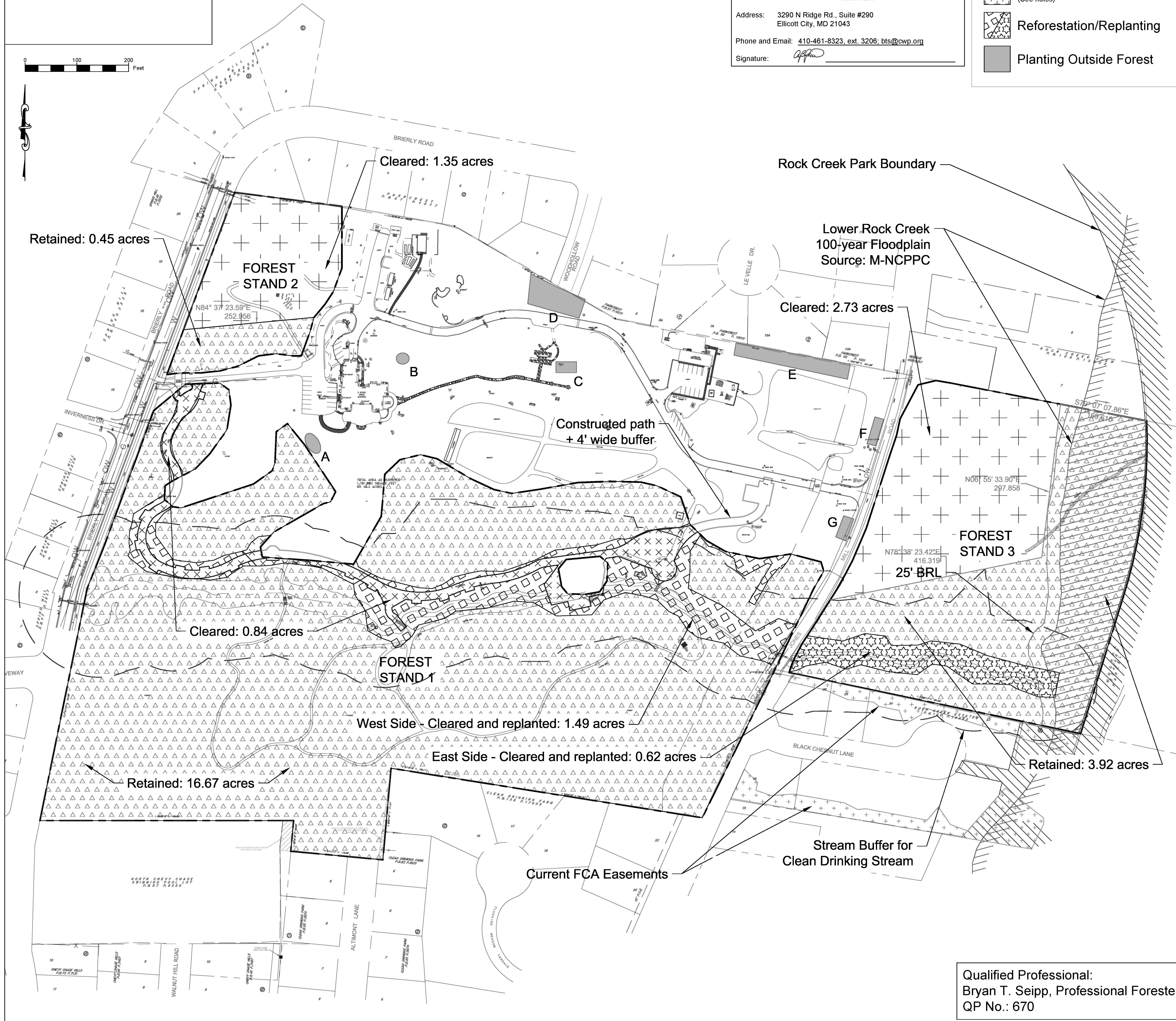
Overstory Trees						
Botanical Name	Common Name	Size	Stock	Spacing (On Center)	West Side QTY	East Side QTY
<i>Carya cordiformis</i>	bitternut hickory	3/4"- 1" caliper	B&B or container grown (min 5 gal)	15'	10	
<i>Carya tomentosa</i>	mockernut hickory	3/4"- 1" caliper	B&B or container grown (min 5 gal)	15'	10	
<i>Quercus alba</i>	white oak	3/4"- 1" caliper	B&B or container grown (min 5 gal)	15'	5	
<i>Quercus coccinea</i>	scarlet oak	3/4"- 1" caliper	B&B or container grown (min 5 gal)	15'	5	
<i>Quercus velutina</i>	black oak	3/4"- 1" caliper	B&B or container grown (min 5 gal)	15'	5	
<i>Quercus bicolor</i>	swamp white oak	3/4"- 1" caliper	B&B or container grown (min 5 gal)	15'	9	
<i>Quercus rubra</i>	northern red oak	3/4"- 1" caliper	B&B or container grown (min 5 gal)	15'	12	
<i>Acer rubrum</i>	red maple	3/4"- 1" caliper	B&B or container grown (min 5 gal)	15'	4	20
<i>Nyssa sylvatica</i>	black gum	3/4"- 1" caliper	B&B or container grown (min 5 gal)	15'	5	
<i>Platanus occidentalis</i>	American sycamore	3/4"- 1" caliper	B&B or container grown (min 5 gal)	15'	10	20
					<b>75</b>	<b>40</b>

Understory Trees						
Botanical Name	Common Name	Size	Stock	Spacing (On Center)	West Side QTY	East Side QTY
<i>Cornus florida</i>	flowering dogwood	3/4"- 1" caliper	B&B or container grown (min 5 gal)	15'	36	
<i>Chionanthus virginicus</i>	fringetree	3/4"- 1" caliper	B&B or container grown (min 5 gal)	15'	14	
<i>Cercis canadensis</i>	redbud	3/4"- 1" caliper	B&B or container grown (min 5 gal)	15'	13	
<i>Ilex opaca</i>	American holly	3/4"- 1" caliper	B&B or container grown (min 5 gal)	15'	18	10
<i>Juniperus virginiana</i>	eastern red cedar	3/4"- 1" caliper	B&B or container grown (min 5 gal)	15'	6	
<i>Prunus serotina</i>	black cherry	3/4"- 1" caliper	B&B or container grown (min 5 gal)	15'	13	
<i>Amelanchier laevis</i>	Allegheny serviceberry	3/4"- 1" caliper	B&B or container grown (min 5 gal)	15'	10	
<i>Amelanchier canadensis</i>	serviceberry	3/4"- 1" caliper	B&B or container grown (min 5 gal)	15'	10	
<i>Sassafras albidum</i>	sassafras	3/4"- 1" caliper	B&B or container grown (min 5 gal)	15'	8	
<i>Asimina triloba</i>	paw paw	3/4"- 1" caliper	B&B or container grown (min 5 gal)	15'	23	10
<i>Betula nigra</i>	river birch	3/4"- 1" caliper	B&B or container grown (min 5 gal)	15'	12	
<i>Celtis occidentalis</i>	hackberry	3/4"- 1" caliper	B&B or container grown (min 5 gal)	15'	6	
<i>Magnolia virginiana</i>	sweet bay magnolia	3/4"- 1" caliper	B&B or container grown (min 5 gal)	15'	12	20
					<b>181</b>	<b>20</b>

Shrubs						
Botanical Name	Common Name	Size	Stock	Spacing	West Side QTY	East Side QTY
<i>Hydrangea arborescens</i>	smooth hydrangea	18" to 24" height	Container grown		15	
<i>Euonymus americanus</i>	strawberry bush	18" to 24" height	Container grown		18	
<i>Ilex verticillata</i>	winterberry holly	18" to 24" height	Container grown		11	
<i>Physocarpus opulifolius</i>	nineberry	18" to 24" height	Container grown		15	
<i>Sambucus canadensis</i>	elderberry	18" to 24" height	Container grown		16	
<i>Vaccinium corymbosum</i>	highbush blueberry	18" to 24" height	Container grown		34	
<i>Viburnum dentatum</i>	arrowwood viburnum	18" to 24" height	Container grown		20	
<i>Viburnum prunifolium</i>	blackhaw	18" to 24" height	Container grown		20	
<i>Rhododendrum periclymenoides</i>	pink azalea	18" to 24" height	Container grown		15	
<i>Vaccinium angustifolium</i>	lowbush blueberry	18" to 24" height	Container grown		20	
<i>Vaccinium stamineum</i>	deerberry	18" to 24" height	Container grown		20	
<i>Viburnum acerifolium</i>	mapleleaf viburnum	18" to 24" height	Container grown		15	
<i>Aronia melanocarpa</i>	black chokeberry	18" to 24" height	Container grown		0	40
					<b>219</b>	<b>40</b>

Shrubs should be evenly distributed over the planting area and among the trees

Non-Forest Tree Planting						
Area/Location	Botanical Name	Common Name	Size	Stock	Spacing (On Center)	QTY
A	<i>Ilex opaca</i>	American holly	3" caliper	B&B or container grown (min 7 gal)	15'	4
B	<i>Cornus florida</i>	flowering dogwood	3" caliper	B&B or container grown (min 7 gal)	15'	3
	<i>Cercis canadensis</i>	redbud	3" caliper	B&B or container grown (min 7 gal)	15'	3
C	<i>Juniperus virginiana</i>	eastern red cedar	3" caliper	B&B or container grown (min 7 gal)	15'	3
	<i>Ilex opaca</i>	American holly	3" caliper	B&B or container grown (min 7 gal)	15'	6
E	<i>Ilex opaca</i>	American holly	3" caliper	B&B or container grown (min 7 gal)	15'	10
F	<i>Betula nigra</i>	river birch	3" caliper	B&B or container grown (min 7 gal)	15'	5
G	<i>Betula nigra</i>	river birch	3" caliper	B&B or container grown (min 7 gal)	15'	3
						<b>37</b>



Qualified Professional:  
Bryan T. Seipp, Professional Forester  
QP No.: 670

**NOTES**

- Trees to be planted outside the forest stands are to be individually located on site during planting by Owner or Owner's representative.
- Areas in Forest Stands 2 and 3 marked as "Reserved from easement" are, for purposes of planting/reforestation requirements, calculated as though they are being cleared. However, these areas are to remain forested unless and until some future use, as discussed in the supporting documents submitted to M-NCPPC, is deemed necessary, and no other environmental restrictions exist that would prevent location of the future use in these areas.

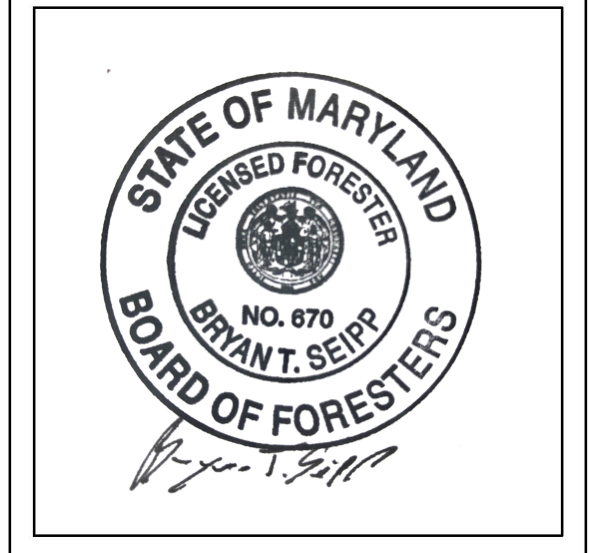
**PROJECT LOCATION:**  
8940 Jones Mill Rd  
Chevy Chase, MD 20815

**Tax Map/Grid:** HP51/0000  
WSSC Grid: 211NW03

**OWNER:**  
Audubon Naturalist Society Woodend Sanctuary  
8940 Jones Mill Rd  
Chevy Chase, MD 20815  
301-652-9188

**PROJECT PARTNERS:**  
L/E Environmental Design | Avelé Engineers, PLLC  
3124 Hope Valley Rd | 7688 Valley Blvd  
Durham, NC, 27707 | Blowing Rock, NC 28607  
919-886-4440 | 828-434-0587

**ENGINEER:**  
Center for Watershed Protection, Inc.  
3290 North Ridge Road, Suite #290  
Ellicott City, MD 21043  
410-461-8323



**PROJECT:** FCP  
Audubon Naturalist Society Woodend Sanctuary  
**PROJECT:** SC2020007

**SHEET TITLE:**  
FCP - FCA Easement, Retention,  
Reforestation, Mitigation

**SCALE:** 1 inch = 100 feet

**DESIGN BY:** ADD

**DRAWN BY:** ADD

**CHECKED BY:** ADD

**PROJECT ID:** WL-17-026

**DATE:** 2020.03.18