





FY2022 Annual School Test and Utilization Report

 Hye-Soo Baek, Senior Planner, Countywide Planning and Policy, Hye-Soo.Baek@montgomeryplanning.org, 301-495-2192
 Jason Sartori, Chief, Countywide Planning and Policy, Jason.Sartori@montgomeryplanning.org, 301-495-2172

Completed: 06/10/21

Description

The 2020-2024 Growth and Infrastructure Policy requires the Planning Board to certify the results of the Annual School Test, which is to be accompanied by a School Utilization Report.

Annual School Test Guidelines

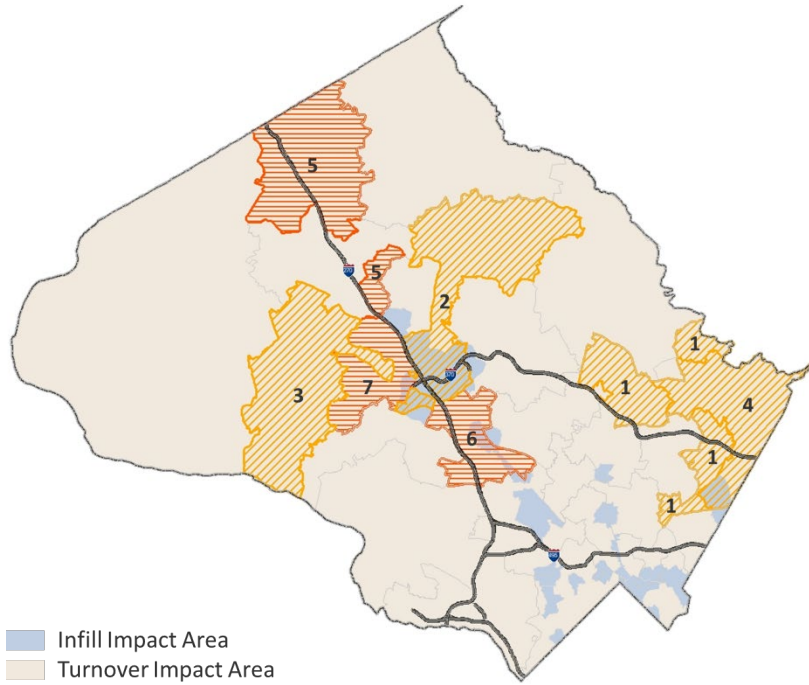
The Planning Board approved [Annual School Test Guidelines](#), version 1.0, on December 17, 2020. There are no changes made to this document, which explains the methodology and standards used in administering the Annual School Test. The FY22 Annual School Test has therefore been conducted according to the previously approved methodology.

FY22 Annual School Test Results

Under the new Growth and Infrastructure Policy, the Annual School Test evaluates individual school facilities for their projected utilization levels 4-years in the future. When found to exceed certain adequacy levels, school service areas are placed in Utilization Premium Payment tiers according to their projected levels of utilization.

The FY22 Annual School Test, administered based on projections for the 2025-2026 school year, places the following school service areas into Utilization Premium Payment tiers.

High School Service Area UPP Tiers



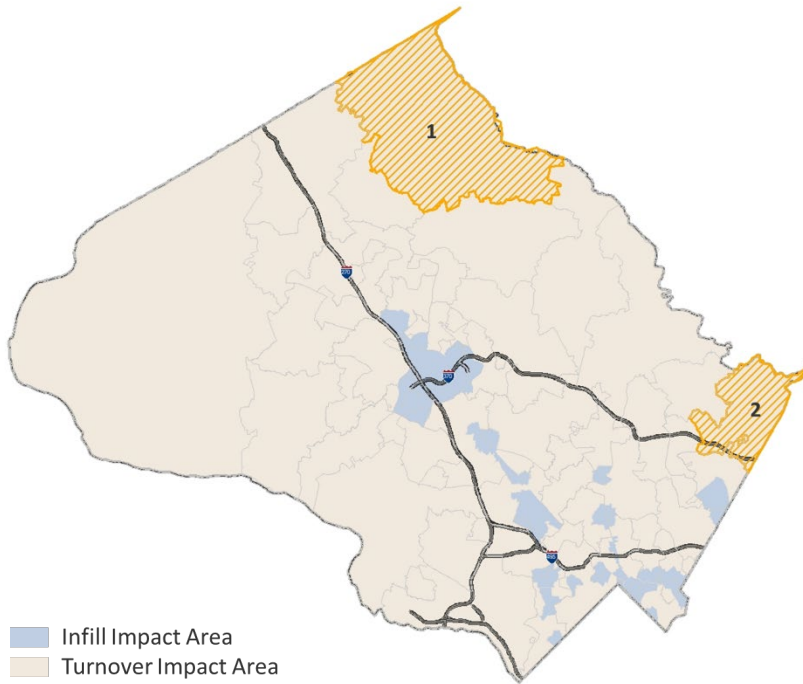
Tier 1 UPP

1. James Hubert Blake HS
2. Gaithersburg HS
3. Northwest HS
4. Paint Branch HS

Tier 2 UPP

5. Clarksburg HS
6. Richard Montgomery HS
7. Quince Orchard HS

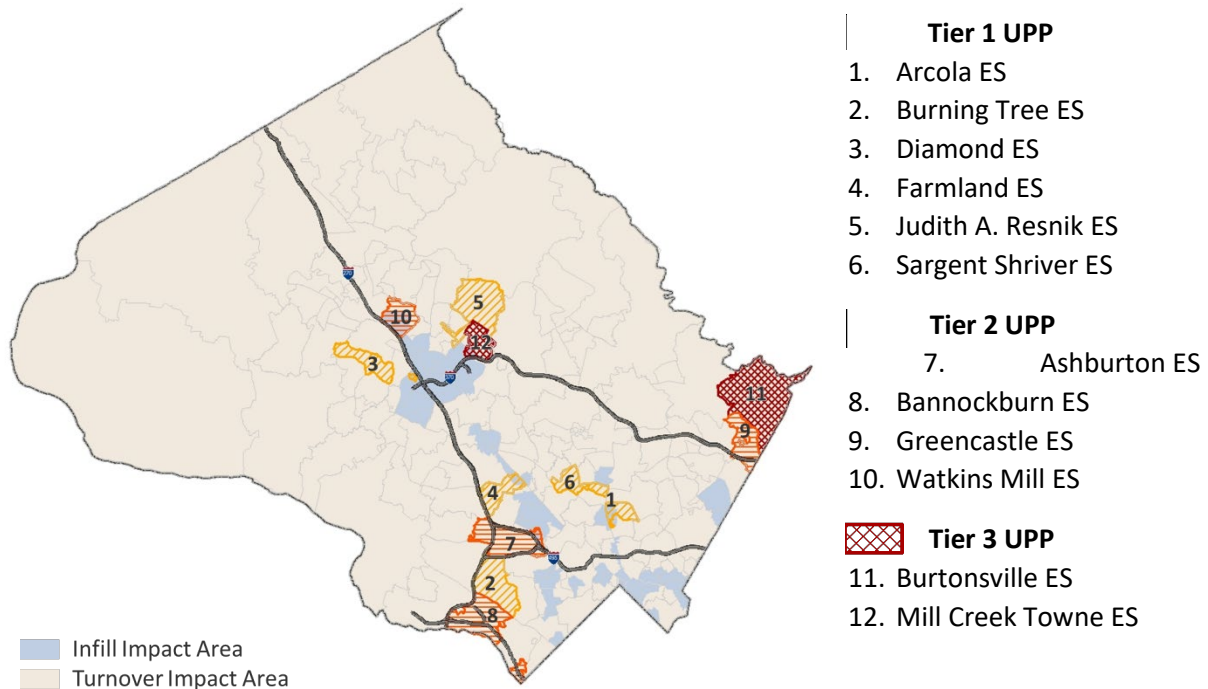
Middle School Service Area UPP Tiers



Tier 1 UPP

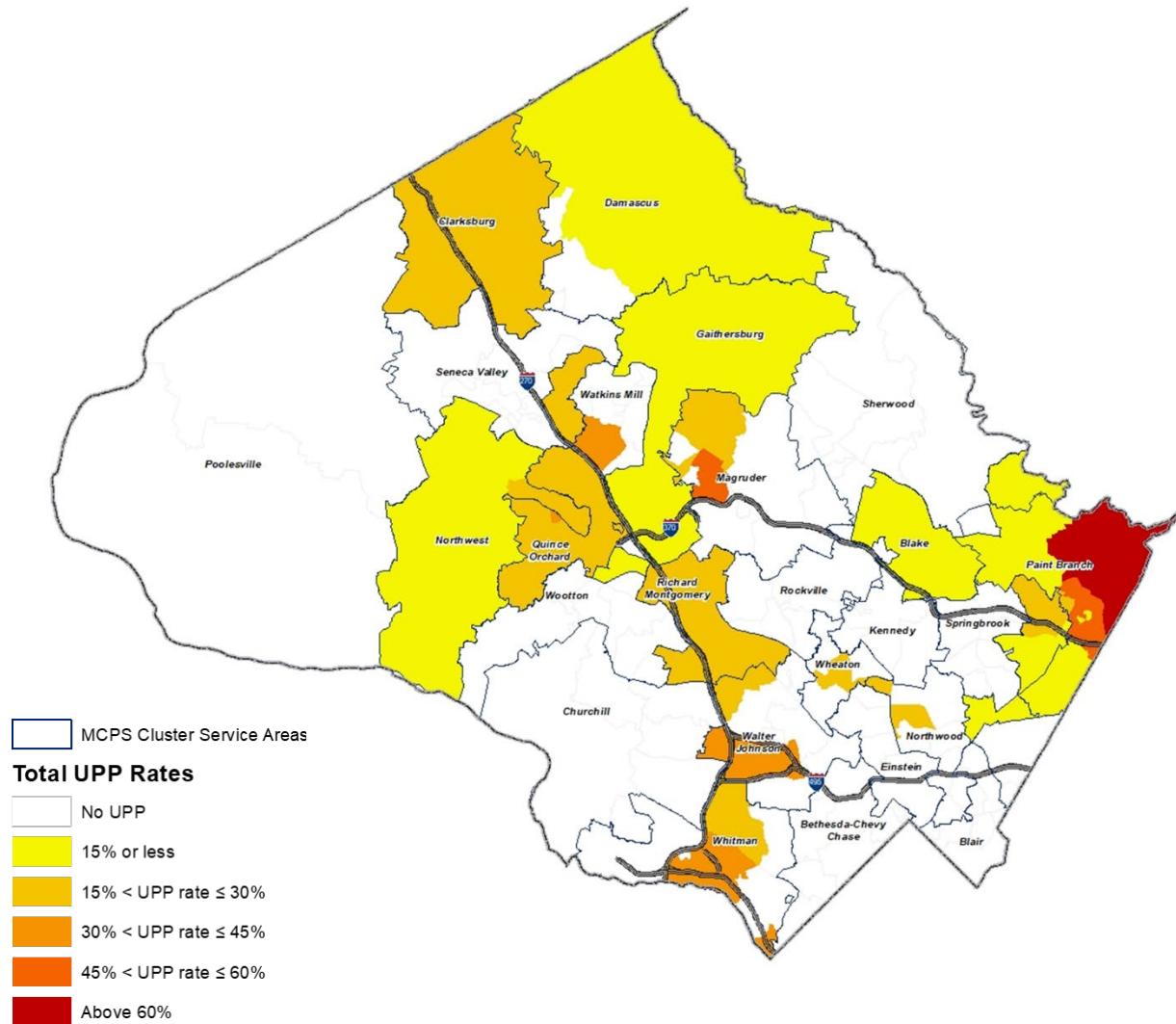
1. John T. Baker MS
2. Benjamin Banneker MS

Elementary School Service Area UPP Tiers



Total UPP Rate

The total Utilization Premium Payment rate of a specific area is calculated by summing the payment factor of the UPP tier for each applicable school service area. The map below illustrates how the total UPP rate ranges across the county. A residential development application may be subject to a higher rate than illustrated below if the estimated number of students generated exceeds the adequacy ceiling identified in the Annual School Test results for any of its school service areas.



Schools Approaching Adequacy Ceilings

When a development application is reviewed for school adequacy, the estimated number of students generated by the proposed development is compared to UPP tier ceilings to determine if partial payments are required or if partial payments at multiple tiers are required. These ceilings are identified in the detailed school test results, and the Annual School Test Guidelines explain how partial payment factors are calculated.

For FY22, the following schools are within 15 projected students of the next payment tier:

- Argyle MS – 7 students from Tier 1
- John T. Baker MS – 10 students from Tier 2
- Bannockburn ES – 11 students from Tier 3
- Burning Tree ES – 2 students from Tier 2
- Diamond ES – 9 students from Tier 2

- Greencastle ES – 8 students from Tier 3
- Spark M. Matsunaga ES – 4 students from Tier 1
- Judith A. Resnik ES – 8 students from Tier 2
- Rock Creek Forest ES – 2 students from Tier 1

These results will go into effect on July 1, 2021 for development applications approved throughout FY22. See Attachment A for further details of the FY22 Annual School Test results.

FY22 School Utilization Report

The 2020 Growth and Infrastructure Policy also requires the Planning Department to prepare a School Utilization Report at the time of the Annual School Test. The Utilization Report consists of a Countywide Report and Individual Schools Report that provides supplemental information about the county's public school facilities from both perspectives.

In the FY22 School Utilization Report, a snapshot of 2020 housing data by school service area has been added. This part of the report is still an ongoing effort and may be improved in future years as additional housing trends data and related information are gathered and analyzed.

See Attachment B for the FY22 School Utilization Report.

Attachments

Attachment A: FY22 Annual School Test Results

Attachment B: FY22 School Utilization Report