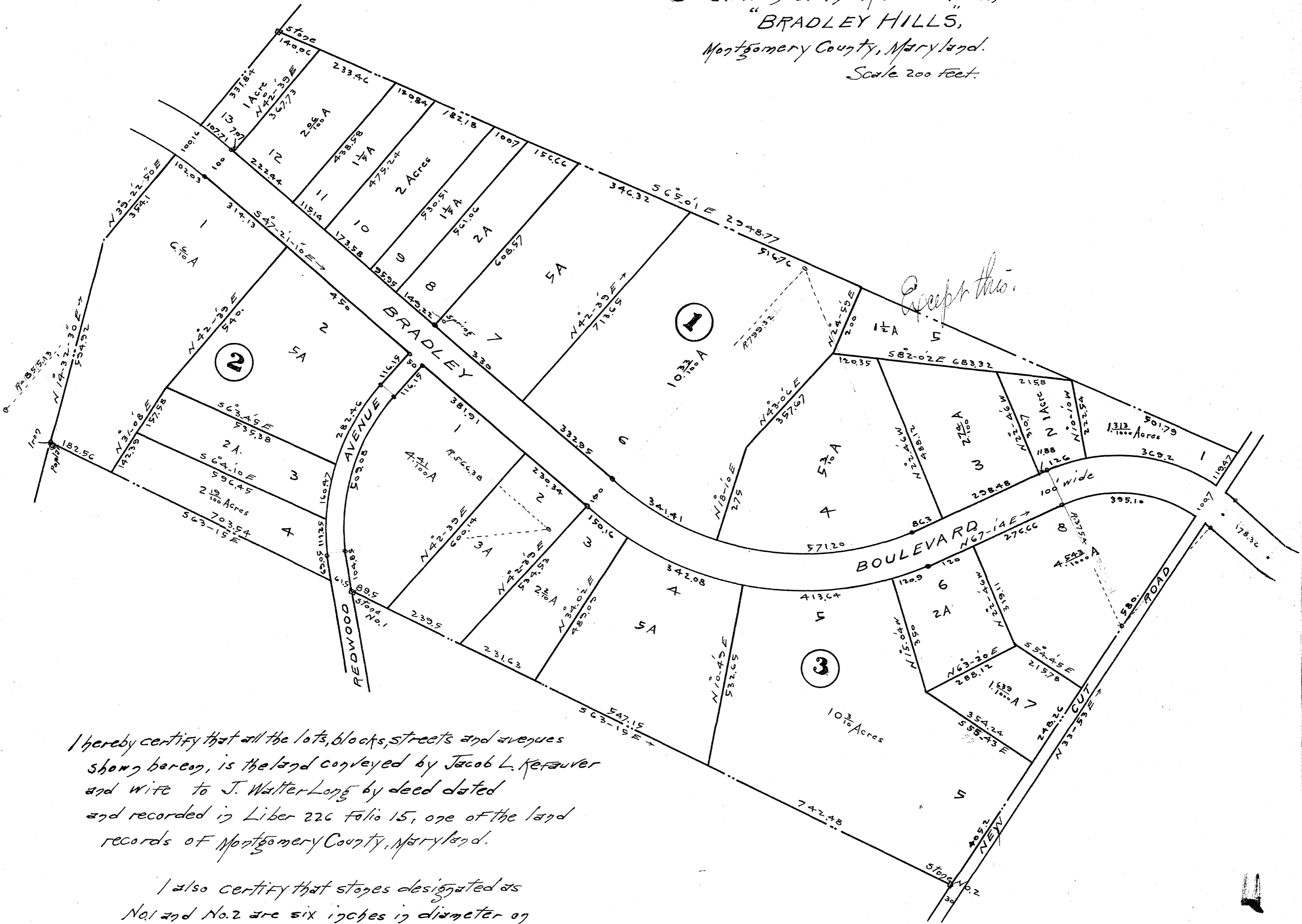


201
Subdivision of the Kerauver Tract,
"BRADLEY HILLS",
Montgomery County, Maryland.
Scale 200 Feet.



I hereby certify that all the lots, blocks, streets and avenues shown hereon, is the land conveyed by Jacob L. Kerauver and wife to J. Walter Long by deed dated and recorded in Liber 226 Folio 15, one of the land records of Montgomery County, Maryland.

I also certify that stops designated as No. 1 and No. 2 are six inches in diameter on top, are planted two feet in the ground, and are properly located at each end of one of the principal lines, and that the bearings are calculated to the true meridian.

E. N. Jackson, G.E.
1918

I, the owner of the subdivision hereby annexed, to be known as the subdivision of the Kerauver Tract, hereby direct the Clerk of the Circuit Court for Montgomery County to file and record this plat among the subdivision records of said County.

Owner
Bradley Hill Incorporated

Witness:

FILED
FEB 18 1920