

## BURIAL SITES INVENTORY UPDATE 2022



### Description

The Historic Preservation Program will present the third annual update to the Montgomery County Burial Sites Inventory to the Planning Board for adoption. This includes modifications made to the Montgomery County Burial Sites Inventory since May 2021 along with a summary of activities carried out as part of the burial sites program in the past year.

	Brian Crane, Cultural Resources Planner III brian.crane@montgomeryplanning.org, 301-563-3402
	Rebecca Ballo, HP Supervisor rebecca.ballo@montgomeryplanning.org, 301-563-3404
	Jason Sartori, Chief, Countywide Planning and Policy jason.sartori@montgomeryplanning.org, 301-495-2172

## SUMMARY

- Staff recommends that the Planning Board adopt the Updated Burial Sites Inventory.
- 13 new sites were added to the inventory based on new information.
- 4 sites changed locations based on new information or a review of existing information.
- 1 site was changed from an approximate location to a known location based on a field visit.
- 2 sites contain administrative changes.
- Fully modernized Cemetery Inventory Database Management.
- Additional updates on compliance review, field visits, public outreach, and research.



# Burial Sites Inventory Program

Draft

Work, Public Hearing, Planning Board

Lead Planner

Brian Crane

Staff Contact

brian.crane@montgomeryplanning.org,  
301-563-3402

Date

June 2, 2022

Planning Division

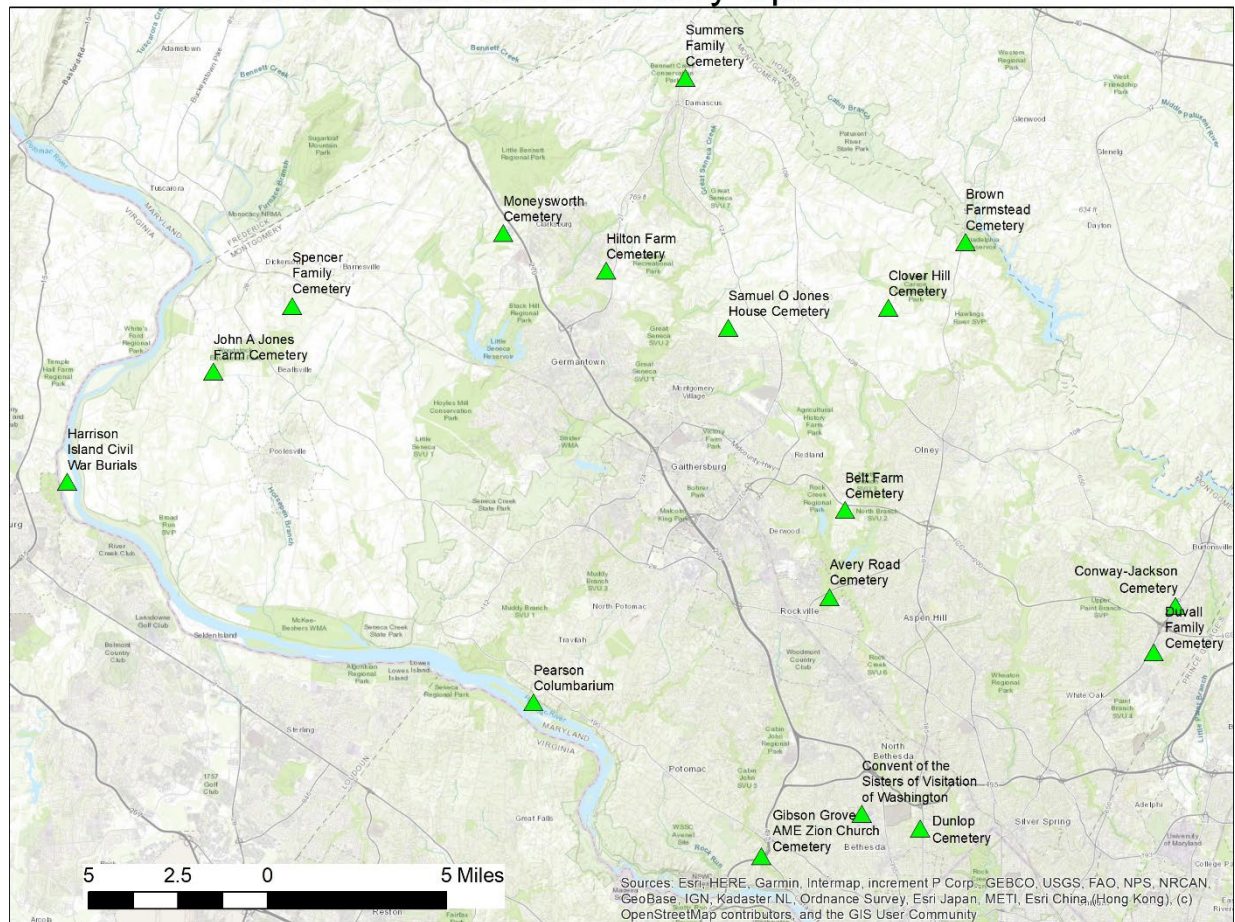
Countywide Planning and Policy, Historic  
Preservation

Planning Board Information

MCPB

Item No. 11

## 2022 Burial Sites Inventory Updates



## TABLE OF CONTENTS

INTRODUCTION .....	3
INVENTORY REVISIONS.....	4
Summary.....	4
Discussion .....	6
BURIAL SITES INVENTORY PROGRAM ACTIVITIES .....	8
Information Systems .....	8
Ongoing Project Related Consultation .....	8
Field Visits .....	8
Public Inquiries And Outreach .....	9
Ongoing And Future Research .....	9
Inventory Refinement.....	9
Master Plan For Historic Preservation .....	9
Identification Pilot Study.....	9
ATTACHMENTS .....	10
Attachment A: Burial Sites Information Forms.....	10
Attachment B: Correspondence Related To Inventory Changes .....	11

## INTRODUCTION

### BACKGROUND

The Montgomery County Guidelines for Burial Sites states that “The Planning Board’s designee will update the Burial Sites Inventory, including additions, revisions, and exclusions/deletions, as new information becomes available so that it reflects the most current and accurate information” and that “additions, revisions, and exclusions/deletions shall be presented to the Planning Board annually at a briefing.” This presentation includes the revisions to the inventory made since May 2021 for the Planning Board’s adoption.



Montgomery County recognizes the significance of cemeteries and burial sites to the community. In 2017, the County Council passed two laws to help preserve and protect these unique and fragile resources. Section 33A-17 of the Montgomery County Code requires the Montgomery County Planning Board to maintain an inventory of burial sites in the county and Montgomery County Ordinance 18-31 (2017) requires that all human burial sites be preserved and protected as a condition of the preliminary plan of subdivision review and approval process. Preservation of these unique archaeological resources will further protect the cultural heritage of Montgomery County. The Planning Board adopted the [Montgomery County Burial Sites Inventory and Guidelines](#) on May 16, 2019. The Planning Department has made these data available to the public via the MCAtlas webportal.

A burial site is defined in the ordinances as the “physical location where human remains were buried in the earth, or entombed in a mausoleum or columbarium. A burial site includes a cemetery, but does not include the sprinkling of ashes from cremated remains.” The Burial Site Inventory is the list of burial sites officially adopted by the Planning Board, pursuant to Section 33A-17 of the Montgomery County Code (Planning Procedures). It is maintained and updated as needed by the Planning Department’s Historic Preservation Office and consists of a GIS data layer and associated documentation. The inventory and preservation of these unique archaeological resources will further protect the cultural heritage of Montgomery County.

The confidence and precision of burial sites in the inventory varies. Some sites are well documented, or clearly visible on the surface today, and their location was confirmed through field observation. Other burial grounds are known through oral or archival history sources, but the burials have been removed, or the exact location is unknown. Sites in the inventory are divided into two broad categories:

- Known Sites: Confirmed in the field or through historical research
- Approximate Sites: Exact location and condition unknown

Staff may redact some locational data consistent with the provisions of Montgomery County Code 18-31 if there is reason to believe the site is at risk for damage from vandalism. A location considered sensitive or at risk will be represented by the boundaries of the lot within which it is located, but the location within the lot will not be displayed publicly.

## BURIAL SITES INVENTORY REVISIONS

### SUMMARY

Efforts to refine and improve the information contained in the Burial Sites Inventory are constantly ongoing. The Historic Preservation Office responds to information or inquiries brought to the Planning Department by members of the public and through ongoing research by staff. As required by the Burial Sites Guidelines, applicable property owners were notified in writing by certified mail on

November 3, 2021 and April 23, 2022 about substantive changes to Burial Sites Inventory records on their property.

Details of the revisions to the Burial Sites Inventory are shown in **Table 1**. Individual site forms are included in **Attachment A**. Correspondence received related to revisions is included in **Attachment B**.

Revisions (20 total) to the Inventory made since last year include:

- 13 new sites were added to the inventory based on new information;
- 4 sites changed locations based on new information or a review of existing information;
- 1 of the updated location sites was also changed from an approximate location to a known location based on a field visit to the site; and
- 2 administrative changes were made (the name of HP-310 was changed to the Conway-Jackson Cemetery to better reflect the history of the site; the name of HP-290 “Slave and Native American Cemetery” was changed to “Possible Enslaved Persons Cemetery” because an indigenous attribution is unsupported by any evidence and is therefore unlikely).

<b>Table 1: Revisions to the Burial Sites Inventory</b>				
<b>ID Number</b>	<b>Cemetery</b>	<b>Revision</b>	<b>Type</b>	<b>Basis for Change</b>
HP-010	Spencer Family Cemetery	1. Correct location	Approximate	Historical maps, deeds, local informant
HP-172	Pearson Columbarium	2. Correct location	Approximate	Deed research
HP-233	Avery Road Cemetery	3. Correct location	Known	Historical research, field visit
		4. Make known		
HP-290	Possible Enslaved Persons Cemetery	5. Name change	Approximate	To clarify probable association of the cemetery
HP-310	Conway-Jackson Cemetery	6. Correct location	Approximate	Historical research including deeds, aerial photographs
		7. Name change		
HP-339	*NEW SITE* Moneysworth Cemetery	8. Add	Approximate	Review of Maryland Inventory of Historic Places form, Historical and deed research
HP-340	*NEW SITE* Convent of the Sisters of Visitation of Washington Cemetery	9. Add	Approximate	Review of Maryland Inventory of Historic Places form, Historical research
HP-341	*NEW SITE* Clover Hill Cemetery	10. Add	Approximate	Review of Maryland Inventory of Historic Places form, deed research

<b>Table 1: Revisions to the Burial Sites Inventory</b>				
<b>ID Number</b>	<b>Cemetery</b>	<b>Revision</b>	<b>Type</b>	<b>Basis for Change</b>
HP-342	*NEW SITE* Hilton Farm Cemetery	11. Add	Approximate	Review of Maryland Inventory of Historic Places form, 1/4 acre reserved in deeds for burial ground
HP-343	*NEW SITE* Samuel O Jones House Cemetery	12. Add	Approximate	Review of Maryland Inventory of Historic Places form, graves were surrounded by brick wall as of 1976
HP-344	*NEW SITE* John A Jones Farm Cemetery	13. Add	Approximate	Review of Maryland Inventory of Historic Places form; will mention walling graveyard.
HP-346	*NEW SITE* Belt Farm Cemetery	14. Add	Approximate	Review of Maryland Inventory of Historic Places form; former Montgomery Parks staff field visit
HP-347	*NEW SITE* Brown Farmstead Cemetery	15. Add	Known	Archaeological survey
HP-348	*NEW SITE* Harrison Island Civil War Burials	16. Add	Approximate	Descriptions of Civil War graves, Battle of Ball's Bluff
HP-349	*NEW SITE* Summers Family Cemetery	17. Add	Approximate	Review of Maryland Inventory of Historic Places form; 1848 Deed reservation
HP-350	*NEW SITE* Gibson Grove AME Zion Church Cemetery	18. Add	Known	Archaeological investigations
HP-351	*NEW SITE* Duvall Family Cemetery	19. Add	Approximate	1865 Deed reservation
HP-352	*NEW SITE* Dunlop Family Cemetery	20. Add	Approximate	1890 deed reservation; 1926 plat

## DISCUSSION

The Montgomery County Burial Sites Inventory initially adopted by the Planning Board in 2019 represented the cumulative work of many volunteers carried out over more than 10 years. That work was extensive; however, staff discovered it did not include systematic search of the 2,620 Maryland Inventory of Historic Places (MIHP) forms for Montgomery County. MIHP forms are the standard field documentation forms submitted to the Maryland Historical Trust. Staff obtained from the Maryland Historical Trust copies of all MIHP forms for Montgomery County in searchable pdf format. This



allowed a systematic computer search – of the tens of thousands of pages in those forms – for the words “cemetery” or “cemeteries,” “grave” or “burial.” This search identified 18 MIHP forms that referenced family burial grounds not currently in the inventory.

Close examination of these sites produced 13 new locations to add to the inventory this year. These sites included specific detailed observations recorded in the past and/or primary source documentation such as deeds or wills. Additionally, five sites could not be verified with sufficient certainty to warrant inclusion in the inventory at this time, but archival research will continue at these locations. Staff conducted deed research to map historical farm boundaries, historic maps and aerial photographs in conjunction with the predictive model developed in 2020 to help identify potential locations for these burial sites.

The inventory includes four cemeteries where graves have reportedly been exhumed and moved, including the Convent of the Sisters of Visitation Cemetery, the Belt Farm Cemetery, the Dunlop Family Cemetery, and the Avery Road Cemetery. Archaeological investigations in the region demonstrate that graveyard removals are often incomplete, and there are known cases where unrecorded burials remained in cemeteries thought to have been entirely exhumed.

There are numerous examples of incomplete cemetery removals in the region. The Riggs family moved their ancestors’ remains to St. John’s cemetery in Olney when they sold the property in 1930. But more burials were found in unmarked graves in 1981 during development of the former farm into the Oaks Landfill. Snowden Funeral Home moved these graves to the Poor Farm. Among the updates included this year, the Dunlop family graves were moved in 1926; however, during subsequent residential development, additional graves were reported from the same location. Another important example of an incompletely moved cemetery was documented by archaeologists for the Maryland Department of Transportation State Highway Administration (MDOT SHA) in neighboring Prince George’s County. The Simon Hill Cemetery in Hyattsville was purportedly moved 50 years ago, but archaeologists working in 2017 found dozens of graves left behind.

This possibility is particularly relevant for the graves of people held in slavery. Prior to emancipation, the graves of people held in slavery may have been in or near the burial grounds of their enslavers, but were typically unmarked, marked with perishable materials such as wood, or marked with unmodified fieldstones that may not be obvious as grave markers.

Staff received a comment letter from MDOT SHA regarding revisions to the burial sites inventory within MDOT SHA rights-of-way, included here as Attachment B.

## BURIAL SITES INVENTORY PROGRAM ACTIVITIES

### INFORMATION SYSTEMS

To better integrate burial sites data into a single system that is sustainable for the long term, Historic Preservation staff worked with Information Technology and Innovation Division staff to migrate the Burial Sites Inventory to the Planning Department's Hansen information system, which maintains regulatory and development application data. Previously, the Inventory consisted of information stored in 3 places: a GIS database, volunteer generated pdf information forms, and additional information in a Microsoft Access database. Staff have integrated the information from the GIS attributes and volunteer forms in a single relational database in Hansen. As part of this migration, staff created a new information form linked to Hansen that will allow updated information to be displayed via MCATLAS. Staff are in the process of generating new information forms for all cemetery records. Next steps include synchronizing edits between GIS and Hansen.

### ONGOING PROJECT RELATED CONSULTATION

Staff continue consultation on projects including preliminary plans, an administrative subdivision, mandatory referrals, and National Historic Preservation Act Section 106 undertakings. In the past year, staff attended consulting party meetings and reviewed archaeological technical reports and a draft programmatic agreement for MDOT SHA's Op Lanes project to add managed lanes to the Beltway and I-270. Coordination for the Op Lanes project involved collaboration with representatives of the Cabin John Citizens Association and Friends of Moses Hall concerning the potential impacts of the project on the Morningstar Tabernacle #88 Cemetery in Gibson Grove. We have also worked with MDOT SHA on potential impacts to the Poor Farm Cemetery site in Rockville. We continue to coordinate additions and revisions to the burial sites inventory with the Maryland Department of Natural Resources, Montgomery County Government, and WSSC.

### FIELD VISITS

Historic Preservation staff routinely perform field visits to publicly accessible cemetery sites in the Burial Sites Inventory in an effort to confirm or improve mapped locations and learn more about how small family, church, and community cemeteries are sited and laid out. Staff visited 19 sites on or under consideration for listing in the inventory since the last inventory update in 2021. Staff have visited 81 sites listed in the inventory since the program was initiated in 2018, accounting for approximately 1/4 of the total sites.

---

## PUBLIC INQUIRIES AND OUTREACH

We are regularly contacted by members of the public with questions about cemeteries in the inventory or with inquiries about cemeteries not yet in the inventory. Outreach efforts since the last update have included contacting property owners and managing agencies of newly added cemetery sites through certified mail and responding to inquiries about these additions. Staff included cemetery history information as part of Fairland and Briggs Chaney Master Plan existing conditions information. Staff participated with regional archaeologists in a panel conversation sponsored by the Montgomery County Remembrance and Reconciliation Commission on May 14, 2022. This panel was designed to help members of the public to research the location of African American family and community cemeteries. Staff prepared a short piece on the use of photogrammetry to record headstones for the [Maryland Archaeology Month booklet](#) prepared by the Maryland Historical Trust, and a blog post for the [Third Place Blog](#) on the use of historical research to locate lost cemeteries.

---

## ONGOING AND FUTURE RESEARCH

### INVENTORY REFINEMENT

The review of Maryland Inventory of Historic Places forms identified other potential cemetery sites not included in this update. For these, further research is needed to verify that a cemetery existed, and to find enough geographical precision to warrant listing in the Inventory.

### MASTER PLAN FOR HISTORIC PRESERVATION

Staff began working on identifying archaeological and cemetery sites that may merit consideration for addition to the Master Plan for Historic Preservation in 2020. This involved reaching out to potentially interested public groups within the county about their interests and concerns. Staff have continued to work in the past year to identify and correct GIS data errors within the Master Plan data, especially with respect to the overlap between Master Plan sites and cemetery sites. Corrections were made to the Mount Nebo Master Plan Historic Site boundary.

### IDENTIFICATION PILOT STUDY

HP staff are working on identifying practical, non-invasive techniques for locating the 82 approximate burial sites in the inventory. In addition to conducting archival research (primarily deed research) and archaeological reconnaissance, staff submitted a proposal for a Maryland Historical Trust non-capital grant to partner with contractors, volunteers, and other community resources to identify potentially missing sites and pinpoint approximate sites. This year's grant proposal was not successful, but we continue to look for opportunities to conduct this research.



## ATTACHMENTS

### ATTACHMENT A: BURIAL SITES INFORMATION FORMS



Montgomery County Planning Department  
The Maryland-National Capital Park and Planning Commission

## Montgomery County Burial Sites Inventory

---

Historic Preservation ID:

HP-010

Name:

Spencer Family Cemetery

Description:

Community:

☐

Religious:

☐

Family:

☐

African American:

☒

Other Site Type:

Number of Burials:

0

Visible Markers:

☐

Formal Entrance:

☐

Cemetery Sign:

☐

Active:

☐

Earliest Year:

0

Latest Year:

0

Is the Site Extant?:

Unknown

Is the Location Sensitive?:

☐

Sensitive Contact:

Sensitive Reason:

Location Confidence:

Approximate

Location Confirmed:

No

**Volunteer Forms and External Web Links (Montgomery Planning is not responsible for content.  
Links provided for informational purposes only)**

2006 Survey Summary:

[https://mcatlas.org/filetransfer/HistoricPreservation/MCCI\\_Summaries\\_2004/MCCI\\_Summary\\_ID\\_010.pdf](https://mcatlas.org/filetransfer/HistoricPreservation/MCCI_Summaries_2004/MCCI_Summary_ID_010.pdf)

Montgomery Preservation, Inc.:

FindaGrave.com:

Maryland Tombstone Transcription Project:

Other Website:

<https://mht.maryland.gov/secure/Medusa/PDF/Montgomery/M%3B%2012-42-34.pdf>

Master Plan Historic Resource No.:

Historic Resource:

Confirmed by Planning Board:

No

Confirmation Date:

Site Survey Date:

01/12/2022

Revision Date:

Site Surveyor Name:

Brian Crane

Data Originator:

Montgomery Preservation, Inc.

Notes:

Maryland Inventory of Historic Places Form 12-42-34. Site visit performed in January 2022 with long-term neighbor who remembers seeing wooden grave markers. No visible evidence of the cemetery was found.

**Technical information about the locational information shown in the online map.**

Public Display Scale:

1: 0

Is there a Restriction on Sharing Information?:

GIS Source Date:

01/12/2022

GIS Source Datum:

Boundary Type:

Horizontal Accuracy:

GIS Data Source:

GPS M-NCPPC

Additional Information:

The location mapped by MPI volunteers was substantially off from probable location. The site of the January 2022 field visit is within the metes and bounds of an 1806 deed (Liber N Folio 33), and close to where Eugene Scheel mapped it in his map of historical and archaeological sites in Western Montgomery County.



Images:

---



HP-10-01

1979 photograph showing wooden markers

Date

Photographer



HP-10-02

Possible location facing west

Date

01/12/2022

Photographer

Brian Crane



HP-10-03

Facing Northwest

Date

01/12/2022

Photographer

Brian Crane



HP-10-04

Facing North

Date

01/12/2022

Photographer

Brian Crane



HP-10-05  
Facing Northeast

Date 01/12/2022  
Photographer Brian Crane



HP-10-06  
Facing East Southeast

Date 01/12/2022  
Photographer Brian Crane

---

<u>MARKER ID</u>	<u>GIVEN NAME</u>	<u>FAMILY NAME</u>	<u>DEATH YEAR</u>
------------------	-------------------	--------------------	-------------------





Montgomery County Planning Department  
The Maryland-National Capital Park and Planning Commission

## Montgomery County Burial Sites Inventory

---

Historic Preservation ID:

HP-172

Name:

Merry Go Round Farm "Columbarium"

Description:

Community:

☐

Religious:

☐

Family:

☒

African American:

☐

Other Site Type:

Number of Burials:

2

Visible Markers:

☒

Formal Entrance:

☐

Cemetery Sign:

☐

Active:

☐

Earliest Year:

1969

Latest Year:

1992

Is the Site Extant?:

Unknown

Is the Location Sensitive?:

☐

Sensitive Contact:

Sensitive Reason:

Location Confidence:

Approximate

Location Confirmed:

No

**Volunteer Forms and External Web Links (Montgomery Planning is not responsible for content.  
Links provided for informational purposes only)**

2006 Survey Summary:

Montgomery Preservation, Inc.:

[https://mcatlas.org/filetransfer/HistoricPreservation/Cemeteries/172 Merry-Go-Round Potomac/172 Merry-Go-Round Potomac 2018/172 Merry-Go-Round Potomac 2018 Survey.pdf](https://mcatlas.org/filetransfer/HistoricPreservation/Cemeteries/172_Merry-Go-Round_Potomac/172_Merry-Go-Round_Potomac_2018/172_Merry-Go-Round_Potomac_2018_Survey.pdf)

FindaGrave.com:

Maryland Tombstone Transcription Project:

Other Website:

Master Plan Historic Resource No.:

Historic Resource:

Confirmed by Planning Board:

Confirmation Date:

Site Survey Date:

Revision Date:

01/24/2018

04/13/2022

Site Surveyor Name:

Glenn Wallace

Data Originator:

Montgomery Preservation, Inc.

Notes:

Burial of Drew and Luvie Pearson near their home. Deed research shows that the location mapped by MPI is well outside the property they owned. The updated location corrects that error.

**Technical information about the locational information shown in the online map.**

Public Display Scale:

Is there a Restriction on Sharing Information?:

1: 0

GIS Source Date:

GIS Source Datum:

Boundary Type:

10/15/2018

Horizontal Accuracy:

GIS Data Source:

Drew and Luvie Pearson property and house

Additional Information:

Images:

Date

Photographer

---

<u>MARKER ID</u>	<u>GIVEN NAME</u>	<u>FAMILY NAME</u>	<u>DEATH YEAR</u>
------------------	-------------------	--------------------	-------------------





Montgomery County Planning Department  
The Maryland-National Capital Park and Planning Commission

## Montgomery County Burial Sites Inventory

---

Historic Preservation ID:

HP-233

Name:

Avery Road Cemetery - Smith Family Cemetery

Description:

Community:

☒

Religious:

☐

Family:

☒

African American:

☒

Other Site Type:

Number of Burials:

unknown

Visible Markers:

☐

Formal Entrance:

☐

Cemetery Sign:

☒

Active:

☐

Earliest Year:

Latest Year:

Is the Site Extant?:

Moved

Is the Location Sensitive?:

☐

Sensitive Contact:

Sensitive Reason:

Location Confidence:

Known

Location Confirmed:

Yes

**Volunteer Forms and External Web Links (Montgomery Planning is not responsible for content.  
Links provided for informational purposes only)**

2006 Survey Summary:

[https://mcatlas.org/filetransfer/HistoricPreservation/MCCI\\_Summaries\\_2004/MCCI\\_Summary\\_ID\\_233.pdf](https://mcatlas.org/filetransfer/HistoricPreservation/MCCI_Summaries_2004/MCCI_Summary_ID_233.pdf)

Montgomery Preservation, Inc.:

[https://mcatlas.org/filetransfer/HistoricPreservation/Cemeteries/233\\_Avery-Road\\_Smith\\_Rockville/233\\_Avery-Road\\_Smith\\_Rockville\\_2018/233\\_Avery-Road\\_Smith\\_Rockville\\_2018\\_Survey.pdf](https://mcatlas.org/filetransfer/HistoricPreservation/Cemeteries/233_Avery-Road_Smith_Rockville/233_Avery-Road_Smith_Rockville_2018/233_Avery-Road_Smith_Rockville_2018_Survey.pdf)

FindaGrave.com:

<https://www.findagrave.com/cemetery/2672463>

Maryland Tombstone Transcription Project:

Other Website:

Master Plan Historic Resource No.:

Historic Resource:

Confirmed by Planning Board:

Confirmation Date:

Site Survey Date:

Revision Date:

No

03/25/2018

03/30/2022

Site Surveyor Name:

Julianne Mangin (2018) Brian Crane (2022)

Data Originator:

Montgomery Preservation, Inc.

Notes:

Deed research shows that the location recorded in 2018 is slightly off. Fieldwork in 2022 confirmed this and found physical evidence of the cemetery, including at least one headstone base, foundation remains, and multiple large depressions that may be where graves were exhumed and not refilled. Area of possible graveyard may extend across the hill/stream terrace beyond boundary suggested by deeds.

**Technical information about the locational information shown in the online map.**

Public Display Scale:

Is there a Restriction on Sharing Information?:

1: 0

GIS Source Date:

GIS Source Datum:

Boundary Type:

03/30/2022

Horizontal Accuracy:

GIS Data Source:

GPS M-NCPPC 2022

Additional Information:

Cemetery boundaries are referenced in a neighboring 1906 deed: "then to exclude the colored Grave Yard, South seventy three degrees, nine minutes East, eleven and fifteen hundredths perches; thence North sixteen degrees and fifty one minutes East, three and sixty three hundredths perches; ; thence North seventy three degrees, nine minutes West, eleven and seventy eight hundredths perches to the center line of the aforesaid road" (Liber 184 Folio 466-468).

The cemetery is labeled as a "Colored Cemetery" in the 1917 Deets and Maddox "A Real Estate Atlas of the Part of Montgomery County Adjacent to the District of Columbia" Plate 5.

<https://jscholarship.library.jhu.edu/bitstream/handle/1774.2/35333/Plate%2005.JPG?sequence=55&isAllowed=y>

Images:

---



HP-233-01

Looking north across bridge towards rise containing cemetery

Date 03/30/2022  
Photographer Brian Crane



HP-233-02

Approach to cemetery from trail looking east

Date 03/30/2022  
Photographer Brian Crane



HP-233-03

A shallow depression, possible foundation looking south

Date 03/30/2022  
Photographer Brian Crane



HP-233-04

A shallow depression lined with stones near top of hill facing south

Date 03/30/2022  
Photographer Brian Crane





HP-233-05

A shallow depression facing north

Date 03/30/2022

Photographer Brian Crane



HP-233-06

Gravestone base near possible foundation remains

Date 03/30/2022

Photographer Brian Crane



HP-233-07

Mortared bricks

Date 03/30/2022

Photographer Brian Crane

---

MARKER ID

GIVEN NAME

FAMILY NAME

DEATH YEAR



Montgomery County Planning Department  
The Maryland-National Capital Park and Planning Commission

## Montgomery County Burial Sites Inventory

---

Historic Preservation ID:

HP-310

Name:

Conway-Jackson Cemetery

Description:

Late 19th, early 20th-century African American Cemetery.

---

Community:

☐

Religious:

☐

Family:

☐

African American:

☒

Other Site Type:

Number of Burials:

100

Visible Markers:

☐

Formal Entrance:

☐

Cemetery Sign:

☐

Active:

☐

Earliest Year:

0

Latest Year:

0

Is the Site Extant?:

Unknown

Is the Location Sensitive?:

☐

Sensitive Contact:

Sensitive Reason:

Location Confidence:

Approximate

Location Confirmed:

No

**Volunteer Forms and External Web Links (Montgomery Planning is not responsible for content.  
Links provided for informational purposes only)**

2006 Survey Summary:

[https://mcatlas.org/filetransfer/HistoricPreservation/MCCI\\_Summaries\\_2004/MCCI\\_Summary\\_ID\\_310.pdf](https://mcatlas.org/filetransfer/HistoricPreservation/MCCI_Summaries_2004/MCCI_Summary_ID_310.pdf)

Montgomery Preservation, Inc.:

FindaGrave.com:

Maryland Tombstone Transcription Project:

Other Website:

Master Plan Historic Resource No.:

Historic Resource:

Confirmed by Planning Board:

Yes

Confirmation Date:

05/16/2019

Site Survey Date:

Revision Date:

04/13/2022

Site Surveyor Name:

Data Originator:

Montgomery Preservation, Inc.

Notes:

Referenced in Burtonsville Heritage Genealogically Speaking by Audrey Lord (1976). The revision moves the location suggested by MPI volunteers to be within the property boundary and within the US 29 right-of-way as described by historical research.

### Technical information about the locational information shown in the online map.

Public Display Scale:

1: 0

Is there a Restriction on Sharing Information?:

GIS Source Date:

10/15/2018

GIS Source Datum:

Boundary Type:

Horizontal Accuracy:

GIS Data Source:

2006 inventory approx loc

Additional Information:

Audrey Lord reported information she received from Roy Miles for her 1976 book on Burtonsville: the cemetery was "reported to have been "on the Randy Roby property," in the vicinity of Airy Hill Road (turn east from Old Columbia pike). However, since no survivors were located when dual Highway Route 29 came through it was obliterated. Miles recalls 100 to 150 crude stones there, on roughly an acre of ground, and thought former slaves named Grif Conway and Emma Jackson were interred there."

Miles' recollection corresponds to an orchard some 250 feet north of a homestead shown on 1950s aerial photographs and Maryland Highway As-built plans for US 29. The location is on a stream terrace, and within the ROW for the new Columbia Pike (US 29) alignment.

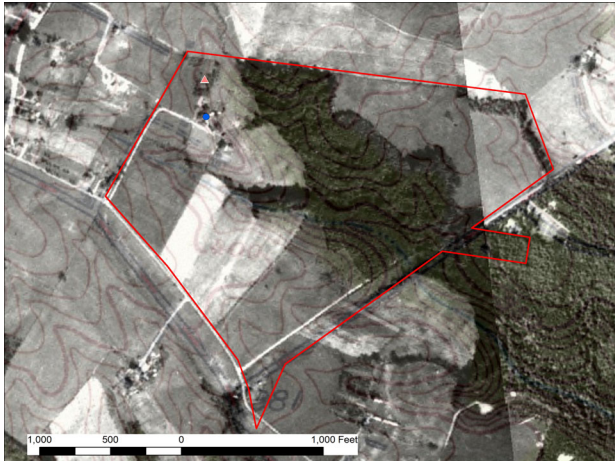
Emma Jackson was a daughter of Malinda Jackson who purchased the cabin where she and her family had been enslaved from her former enslaver Ann Downs in 1869. Griffin Conway was a boarder who lived with the Jacksons on their property. Both the Jackson homestead and the Conway-Jackson cemetery site are located on land that once belonged to Downs. The nearby farmstead corresponds to where real estate maps indicate Downs and later owners had their homes. There are Jackson descendants living in the area today.

Emma Jackson was born in slavery, the daughter of Malinda Jackson who purchased the cabin where she and her family had been enslaved from her former enslaver Ann Downs in 1869. Griffin Conway was a boarder who lived with the Jacksons on their property. Both the Jackson homestead and the Conway-Jackson cemetery site are located on land that once belonged to Ann Downs. The nearby farmstead corresponds to where real estate maps indicate Downs and later owners had their homes.



## Images:

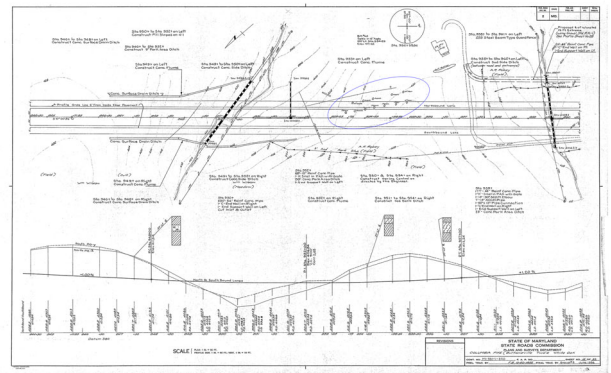
---



HP-310-01

1951 Aerial photograph and topographic map showing probable location of the cemetery

Date 04/07/2022  
Photographer Brian Crane



HP-310-02

1954 As-Built plans for US 29 showing orchard where cemetery may have been located

Date 04/07/2022  
Photographer Brian Crane

---

MARKER ID

GIVEN NAME

FAMILY NAME

DEATH YEAR



Montgomery County Planning Department  
The Maryland-National Capital Park and Planning Commission

## Montgomery County Burial Sites Inventory

---

Historic Preservation ID:

HP-339

Name:

Moneysworth Farm Cemetery

Description:

Small 19th-century family cemetery.

---

Community:

☐

Religious:

☐

Family:

☒

African American:

☒

Other Site Type:

Number of Burials:

Visible Markers:

☐

Formal Entrance:

☐

Cemetery Sign:

☐

Active:

☐

Earliest Year:

Latest Year:

Is the Site Extant?:

Is the Location Sensitive?:

☐

Sensitive Contact:

Sensitive Reason:

Location Confidence:

Location Confirmed:

Approximate

**Volunteer Forms and External Web Links (Montgomery Planning is not responsible for content.  
Links provided for informational purposes only)**

2006 Survey Summary:

Montgomery Preservation, Inc.:

FindaGrave.com:

Maryland Tombstone Transcription Project:

Other Website:

<https://mht.maryland.gov/secure/Medusa/PDF/Montgomery/M%3B%2013-14.pdf>

Master Plan Historic Resource No.:

Historic Resource:

Confirmed by Planning Board: \_\_\_\_\_

Confirmation Date:

Site Survey Date: \_\_\_\_\_

Revision Date:

No

01/25/2022

Site Surveyor Name: \_\_\_\_\_

Brian Crane

Data Originator:

Notes: \_\_\_\_\_

Reserved in a deed from Dorothy Williams to William Willson of John, September 15, 1827 (L BS 1 F 297). Maryland Inventory of Historic Places Form says that Marshall Day testified in 1975 that his enslaved ancestors were buried near the house. Field visit did not find clear surface evidence of a cemetery.

**Technical information about the locational information shown in the online map.**

Public Display Scale: \_\_\_\_\_

Is there a Restriction on Sharing Information?:

1: 50,000

GIS Source Date:

GIS Source Datum:

Boundary Type:

Horizontal Accuracy:

GIS Data Source:

Additional Information: \_\_\_\_\_

This approximate site is estimated to be within a few hundred feet of the historic house, most likely to the northwest. It is on the grounds of the Moneysworth Farm Master Plan Historic Site 13-14, and on the grounds of the Montgomery County Correctional Facility.

The MIHP form reads in part: "Marshall Day, a black man, remembers that his relatives worked at this mill,10 His slave ancestors are buried in a cemetery near the house."

Images:

---



HP-339-01

Historic House from SE

Date 01/25/2022  
Photographer Brian Crane



HP-339-02

Historic House from SW

Date 01/25/2022  
Photographer Brian Crane



HP-339-03

Fieldstones north of house

Date 01/25/2022  
Photographer Brian Crane



HP-339-04

Fieldstone north of house

Date 01/25/2022  
Photographer Brian Crane





HP-339-05

Fieldstone northwest of house

Date 01/25/2022  
Photographer Brian Crane



HP-339-06

Fieldstone west of house

Date 01/25/2022  
Photographer Brian Crane

---

MARKER ID

GIVEN NAME

FAMILY NAME

DEATH YEAR



Montgomery County Planning Department  
The Maryland-National Capital Park and Planning Commission

## Montgomery County Burial Sites Inventory

---

Historic Preservation ID:

HP-340

Name:

Convent of the Sisters of Visitation Cemetery

Description:

Cemetery for sisters of the Convent.

---

Community:

☐

Religious:

☒

Family:

☐

African American:

☐

Other Site Type:

Number of Burials:

23

Visible Markers:

☐

Formal Entrance:

☐

Cemetery Sign:

☐

Active:

☐

Earliest Year:

1920

Latest Year:

1982

Is the Site Extant?:

Is the Location Sensitive?:

☐

Sensitive Contact:

Sensitive Reason:

Location Confidence:

Approximate

Location Confirmed:

**Volunteer Forms and External Web Links (Montgomery Planning is not responsible for content.  
Links provided for informational purposes only)**

2006 Survey Summary:

Montgomery Preservation, Inc.:

FindaGrave.com:

Maryland Tombstone Transcription Project:

Other Website:

<https://mht.maryland.gov/secure/Medusa/PDF/Montgomery/M%3B%2035-9-6.pdf>



Master Plan Historic Resource No.:

Historic Resource:

Confirmed by Planning Board:

Confirmation Date:

Site Survey Date:

Revision Date:

No

Site Surveyor Name:

Data Originator:

Notes:

A 2019 Washington Post article states that 23 graves moved circa 1982 prior to NIH sale. Interment dates are not known; the date range includes the time the order owned the property.

### Technical information about the locational information shown in the online map.

Public Display Scale:

Is there a Restriction on Sharing Information?:

1: 50,000

GIS Source Date:

GIS Source Datum:

Boundary Type:

Horizontal Accuracy:

GIS Data Source:

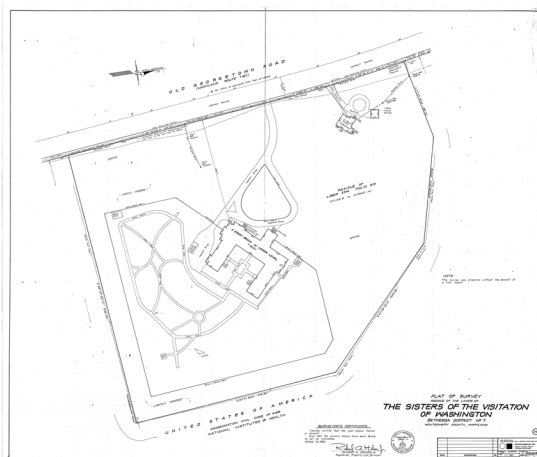
Additional Information:

Review of NIH files by NIH staff did not find materials indicating the original location of the cemetery. A 1983 survey plat shows the original buildings, but does not indicate a cemetery.

Maryland Inventory of Historic Places Form 35-9-6 reads: "There was a cemetery located at the Convent. Prior to the sale of the property, the bodies of 23 Sisters were exhumed and re-interred in other Catholic cemeteries."

Images:

October 1983 Survey Plat of Convent



Date

Photographer NA

---

<u>MARKER ID</u>	<u>GIVEN NAME</u>	<u>FAMILY NAME</u>	<u>DEATH YEAR</u>
------------------	-------------------	--------------------	-------------------



Montgomery County Planning Department  
The Maryland-National Capital Park and Planning Commission

## Montgomery County Burial Sites Inventory

---

Historic Preservation ID:

HP-341

Name:

Clover Hill Cemetery

Description:

Enslaved persons burial ground in orchard

---

Community:

☐

Religious:

☐

Family:

☐

African American:

☒

Other Site Type:

Number of Burials:

Visible Markers:

☐

Formal Entrance:

☐

Cemetery Sign:

☐

Active:

☐

Earliest Year:

Latest Year:

Is the Site Extant?:

Is the Location Sensitive?:

☐

Sensitive Contact:

Sensitive Reason:

Location Confidence:

Location Confirmed:

Approximate

**Volunteer Forms and External Web Links (Montgomery Planning is not responsible for content.  
Links provided for informational purposes only)**

2006 Survey Summary:

Montgomery Preservation, Inc.:

FindaGrave.com:

Maryland Tombstone Transcription Project:

Other Website:

<https://mht.maryland.gov/secure/Medusa/PDF/Montgomery/M%3B%2023-51.pdf>

Master Plan Historic Resource No.:

Historic Resource:

Confirmed by Planning Board:

Confirmation Date:

Site Survey Date:

Revision Date:

No

Site Surveyor Name:

Data Originator:

Notes:

---

Based on information in MIHP Form 23-51 for Clover Hill, a Master Plan Historic Site.

**Technical information about the locational information shown in the online map.**

Public Display Scale:

Is there a Restriction on Sharing Information?:

1: 50,000

GIS Source Date:

GIS Source Datum:

Boundary Type:

Horizontal Accuracy:

GIS Data Source:

Additional Information:

---

MIHP form reads: "Clover Hill remained in Gaither family hands until 1891, when the heirs of Thomas Gaither defaulted on the mortgage, and State Senator Henry Benson purchased Clover Hill at a sheriff's sale. During his ownership, the senator planted an orchard on the property, on the site of an old slave burial ground. Some of the gravestones which were removed to build the orchard eventually found their way into a garden wall which adjoins the house, built in 1927, by then-owner Major J.W. Swaren, U.S. Army."

Images:

---

South elevation of House



Date 03/07/2004

Photographer Jennifer Cosham (for MHT)

---

<u>MARKER ID</u>	<u>GIVEN NAME</u>	<u>FAMILY NAME</u>	<u>DEATH YEAR</u>
------------------	-------------------	--------------------	-------------------



Montgomery County Planning Department  
The Maryland-National Capital Park and Planning Commission

## Montgomery County Burial Sites Inventory

---

Historic Preservation ID:

HP-342

Name:

Hilton Farm Cemetery

Description:

Small 19th-century rural family cemetery.

---

Community:

☐

Religious:

☐

Family:

☒

African American:

☐

Other Site Type:

Number of Burials:

Visible Markers:

☐

Formal Entrance:

☐

Cemetery Sign:

☐

Active:

☐

Earliest Year:

Latest Year:

Is the Site Extant?:

Is the Location Sensitive?:

☐

Sensitive Contact:

Sensitive Reason:

Location Confidence:

Location Confirmed:

Approximate

**Volunteer Forms and External Web Links (Montgomery Planning is not responsible for content.  
Links provided for informational purposes only)**

2006 Survey Summary:

Montgomery Preservation, Inc.:

FindaGrave.com:

Maryland Tombstone Transcription Project:

Other Website:

<https://mht.maryland.gov/secure/Medusa/PDF/Montgomery/M%3B%2013-18.pdf>



Master Plan Historic Resource No.:

Historic Resource:

Confirmed by Planning Board:

Confirmation Date:

Site Survey Date:

Revision Date:

No

Site Surveyor Name:

Data Originator:

Notes:

An 1868 deed reserves 1/4 acre for a burial ground.

### Technical information about the locational information shown in the online map.

Public Display Scale:

Is there a Restriction on Sharing Information?:

1: 50,000

GIS Source Date:

GIS Source Datum:

Boundary Type:

Horizontal Accuracy:

GIS Data Source:

Additional Information:

The Maryland Inventory of Historic Places Form 13-18 reads: "In 1868, after Margaret Purdum's remarriage, the property was ordered sold under a court order, with the proceeds to be divided among Purdum's eight children. Thomas Anderson was appointed trustee for the sale of Purdum's property, described as "200-250 acres, with a comfortable dwelling, a barn, and two tobacco houses worth \$20 an acre " The property was divided into three lots and lot #1, containing 124 acres (part of two tracts known as "The Resurvey of Locust Levels" and "The Addition to Brooks Grove") was sold to George W. and Frances C. Hilton for \$35.50 an acre, one quarter acre was reserved for a graveyard. The dower lot, which was reserved for Purdum's widow, contained 36 112 acres and a one-bay, two-story, gable-roof dwelling."

Images:



1951 Aerial with 1868 farm boundary shown in red, possible cem loction shown as green triangle

Date 04/06/2022

Photographer Brian Crane

---

<u>MARKER ID</u>	<u>GIVEN NAME</u>	<u>FAMILY NAME</u>	<u>DEATH YEAR</u>
------------------	-------------------	--------------------	-------------------



Montgomery County Planning Department  
The Maryland-National Capital Park and Planning Commission

## Montgomery County Burial Sites Inventory

---

Historic Preservation ID:

HP-343

Name:

Samuel O. Jones House Cemetery

Description:

Small 19th-century rural family graveyard.

---

Community:

☐

Religious:

☐

Family:

☒

African American:

☐

Other Site Type:

Number of Burials:

Visible Markers:

☐

Formal Entrance:

☐

Cemetery Sign:

☐

Active:

☐

Earliest Year:

1847

Latest Year:

Is the Site Extant?:

Is the Location Sensitive?:

☐

Sensitive Contact:

Sensitive Reason:

Location Confidence:

Approximate

Location Confirmed:

**Volunteer Forms and External Web Links (Montgomery Planning is not responsible for content.  
Links provided for informational purposes only)**

2006 Survey Summary:

Montgomery Preservation, Inc.:

FindaGrave.com:

Maryland Tombstone Transcription Project:

Other Website:

<https://mht.maryland.gov/secure/Medusa/PDF/Montgomery/M%3B%2014-61.pdf>

Master Plan Historic Resource No.:

Historic Resource:

Confirmed by Planning Board:

Confirmation Date:

Site Survey Date:

Revision Date:

No

Site Surveyor Name:

Data Originator:

Notes:

Referenced on MIHP Form 14-61.

**Technical information about the locational information shown in the online map.**

Public Display Scale:

Is there a Restriction on Sharing Information?:

1: 0

GIS Source Date:

GIS Source Datum:

Boundary Type:

Horizontal Accuracy:

GIS Data Source:

Additional Information:

The Maryland Inventory of Historic Places Form (14-61) prepared in 1979 reads: "The family graveyard dates from 1847 and remains on the property, enclosed by a brick wall."

Images:



HP-343\_01

SW Corner Historic House

Date 08/23/1974

Photographer Mike Dwyer

---

<u>MARKER ID</u>	<u>GIVEN NAME</u>	<u>FAMILY NAME</u>	<u>DEATH YEAR</u>
------------------	-------------------	--------------------	-------------------



Montgomery County Planning Department  
The Maryland-National Capital Park and Planning Commission

## Montgomery County Burial Sites Inventory

---

Historic Preservation ID:

HP-344

Name:

John A. Jones Farm Cemetery

Description:

Small 19th-century rural family graveyard.

---

Community:

☐

Religious:

☐

Family:

☒

African American:

☐

Other Site Type:

Number of Burials:

Visible Markers:

☐

Formal Entrance:

☐

Cemetery Sign:

☐

Active:

☐

Earliest Year:

Latest Year:

Is the Site Extant?:

Is the Location Sensitive?:

☐

Sensitive Contact:

Sensitive Reason:

Location Confidence:

Location Confirmed:

Approximate

**Volunteer Forms and External Web Links (Montgomery Planning is not responsible for content.  
Links provided for informational purposes only)**

2006 Survey Summary:

Montgomery Preservation, Inc.:

FindaGrave.com:

Maryland Tombstone Transcription Project:

Other Website:

<https://mht.maryland.gov/secure/Medusa/PDF/Montgomery/M%3B%2016-3.pdf>

Master Plan Historic Resource No.:

Historic Resource:

Confirmed by Planning Board:

Confirmation Date:

Site Survey Date:

Revision Date:

No

02/09/2022

Site Surveyor Name:

Data Originator:

Notes:

Referenced on MIHP Form 16-3. A field visit on February 9, 2022 did not identify any surface evidence for the cemetery. The site is a Locational Atlas Historic Site, and owned by Montgomery County.

**Technical information about the locational information shown in the online map.**

Public Display Scale:

Is there a Restriction on Sharing Information?:

1: 0

GIS Source Date:

GIS Source Datum:

Boundary Type:

Horizontal Accuracy:

GIS Data Source:

Additional Information:

The Maryland Inventory of Historic Places Form (16-3) reads: "At the time of his death (circa 1807} Thomas Cooley (Cowley) willed his plantation to his wife and seven children. His widow continued to occupy the house until her death in 1825. Her will mentioned a family graveyard on the property." The will reads: "after my debts and funeral charges are paid, and the expence [sic.] of walling the grave yard in with stone and pointed with lime on the insides and out are paid"



Images:

---



HP-344-01

Entrance to farm facing east



HP-344-02

Farmstead

Date 02/09/2022  
Photographer Brian Crane

Date 02/09/2022  
Photographer Brian Crane

---

MARKER ID

GIVEN NAME

FAMILY NAME

DEATH YEAR



Montgomery County Planning Department  
The Maryland-National Capital Park and Planning Commission

## Montgomery County Burial Sites Inventory

---

Historic Preservation ID:

HP-346

Name:

Belt Farm Cemetery

Description:

Small 19th-century rural family cemetery.

---

Community:

☐

Religious:

☐

Family:

☒

African American:

☐

Other Site Type:

Number of Burials:

Visible Markers:

☐

Formal Entrance:

☐

Cemetery Sign:

☐

Active:

☐

Earliest Year:

1888

Latest Year:

1889

Is the Site Extant?:

Is the Location Sensitive?:

☐

Sensitive Contact:

Sensitive Reason:

Location Confidence:

Approximate

Location Confirmed:

**Volunteer Forms and External Web Links (Montgomery Planning is not responsible for content.  
Links provided for informational purposes only)**

2006 Survey Summary:

Montgomery Preservation, Inc.:

FindaGrave.com:

<https://www.findagrave.com/memorial/129402189/john-benjamin-belt>

Maryland Tombstone Transcription Project:

Other Website:

<https://mht.maryland.gov/secure/Medusa/PDF/Montgomery/M%3B%2022-26.pdf>

Master Plan Historic Resource No.:

Historic Resource:

Confirmed by Planning Board:

Confirmation Date:

Site Survey Date:

Revision Date:

No

Site Surveyor Name:

Data Originator:

Notes:

---

Recorded by Michael Dwyer, M-NCPPC Park Historian 8/19/75.

**Technical information about the locational information shown in the online map.**

Public Display Scale:

Is there a Restriction on Sharing Information?:

1: 0

GIS Source Date:

GIS Source Datum:

Boundary Type:

Horizontal Accuracy:

GIS Data Source:

Additional Information:

---

MIHP Form 22-26 reads: "The old family graveyard is located in the center of the field, to the NE of the buildings. The base of a marker remains, but the bodies were reinterred at Rockville Cemetery. Two of the stones are in the yard of Mrs. Ruth (Belt) Pope, nearby. They read:

In memory of our father  
John Belt  
Passed to rest Nov. (?)  
Aged (?) 2 mos.  
I have. fought a .good fight  
I have finished my course  
I have kept the faith

Nancy  
wife of  
John Belt  
Born Sept. 14, 1810  
Died March 14, 1888"

Images:

---



HP-346-01

1951 Aerial photograph of approximate area  
where original grave locations were noted in  
1975 by Parks historian Mike Dwyer

Date 04/08/2022

Photographer Brian Crane

---

MARKER ID

GIVEN NAME

FAMILY NAME

DEATH YEAR



Montgomery County Planning Department  
The Maryland-National Capital Park and Planning Commission

## Montgomery County Burial Sites Inventory

---

Historic Preservation ID:

HP-347

Name:

Brown Farm Cemetery

Description:

Small 19th-century rural family cemetery.

---

Community:

☐

Religious:

☐

Family:

☒

African American:

☐

Other Site Type:

Number of Burials:

Visible Markers:

☐

Formal Entrance:

☐

Cemetery Sign:

☐

Active:

☐

Earliest Year:

Latest Year:

Is the Site Extant?:

Is the Location Sensitive?:

☐

Sensitive Contact:

Sensitive Reason:

Location Confidence:

Known

Location Confirmed:

Yes

**Volunteer Forms and External Web Links (Montgomery Planning is not responsible for content.  
Links provided for informational purposes only)**

2006 Survey Summary:

Montgomery Preservation, Inc.:

FindaGrave.com:

Maryland Tombstone Transcription Project:

Other Website:

<https://mht.maryland.gov/secure/Medusa/PDF/Montgomery/M%3B%2023-155.pdf>

Master Plan Historic Resource No.:

Historic Resource:

Confirmed by Planning Board:

Confirmation Date:

Site Survey Date:

Revision Date:

No

02/02/2022

Site Surveyor Name:

Brian Crane

Data Originator:

Notes:

Mentioned on Maryland Inventory of Historic Places Form 23-155 recorded in 2008.

**Technical information about the locational information shown in the online map.**

Public Display Scale:

Is there a Restriction on Sharing Information?:

1: 0

GIS Source Date:

GIS Source Datum:

Boundary Type:

Horizontal Accuracy:

GIS Data Source:

Additional Information:

There are several upright fieldstones on the edge of the hill to the east of the farmhouse ruins noted by archaeologists in 2007. At least two potential uninscribed fieldstone grave markers were noted in a heavily overgrown area during a site visit in February 2022.



Images:

---



HP-347-02

Approach to Cemetery

Date 02/02/2022  
Photographer Brian Crane



HP-347-03

Uninscribed Marker

Date 02/02/2022  
Photographer Brian Crane



HP-347-04

Uninscribed Marker

Date 02/02/2022  
Photographer Brian Crane

---

MARKER ID

GIVEN NAME

FAMILY NAME

DEATH YEAR





Montgomery County Planning Department  
The Maryland-National Capital Park and Planning Commission

## Montgomery County Burial Sites Inventory

---

Historic Preservation ID:

HP-348

Name:

Harrison Island Civil War Burials

Description:

Civil War burials associated with the Battle of Balls Bluff.

---

Community:

☐

Religious:

☐

Family:

☐

African American:

☐

Other Site Type:

Civil War battlefield burials

---

Number of Burials:

unknown

Visible Markers:

☐

Formal Entrance:

☐

Cemetery Sign:

☐

Active:

☐

Earliest Year:

1861

Latest Year:

1861

Is the Site Extant?:

Is the Location Sensitive?:

☐

Sensitive Contact:

Sensitive Reason:

Location Confidence:

Approximate

Location Confirmed:

**Volunteer Forms and External Web Links (Montgomery Planning is not responsible for content.  
Links provided for informational purposes only)**

2006 Survey Summary:

Montgomery Preservation, Inc.:

FindaGrave.com:

Maryland Tombstone Transcription Project:

Other Website:

<https://mht.maryland.gov/secure/Medusa/PDF/Montgomery/M%3B%2016-32.pdf>

Master Plan Historic Resource No.:

Historic Resource:

Confirmed by Planning Board:

Confirmation Date:

Site Survey Date:

Revision Date:

Site Surveyor Name:

Data Originator:

Notes:

---

The farmhouse on the island was used as a field hospital during the Battle of Balls Bluff in October 1861. Multiple contemporary accounts mention Union casualties buried on the island.

**Technical information about the locational information shown in the online map.**

Public Display Scale: \_\_\_\_\_

Is there a Restriction on Sharing Information?:

1: 0

GIS Source Date:

GIS Source Datum:

Boundary Type:

Horizontal Accuracy:

GIS Data Source:

"The dead and wounded were collected in an old house on Harrison's Island, and were ferried across to the Maryland shore as rapidly as possible during the night, and were then put on canal-boats and taken down to Edwards Ferry, where the wounded were sent to their different regimental hospitals, while the dead were laid on stretchers and on shutters and doors taken from the house on the island, and placed in a row on the porch of the old store near the ferry." 20th Massachusetts pg 61-62.

"I reported with the men at the hospital on the island." Patch 1958: 42

"The detachment of the Tammany regiment that remained on the island in consequence of the accident heretofore mentioned —consisting of Companies B, Lieut. James McGrath commanding ; D, Capt. Isaac Gotthold, commanding; F, Capt. J. W. Tobin, commanding; G, Capt. John Quinn commanding; and I, Capt. David Hogg commanding — were on active and arduous service from the moment of their arrival on the island until 2 pm. Of the succeeding day in taking care of and conveying the wounded to the hospital, and in standing in the intrenchments as a guard under a heavy and incessant fire from the enemy." Patch 1958:49.

"Meanwhile others of us were removing the wounded and burying the dead on the island. I was told off as one of the burying party. For any boy of seventeen it would have been a trying task. It was so for me who had rarely seen a corpse and never one from violence. Sunk in the mud, or sprawling on wet grass, the naked or half-clad bodies were fearful in their pallor, grimy with dirt and horrible with gaping wounds. Some features were placid and peaceful as though death was welcome, while others were twisted and contorted as if unbearable pain had come at the end, but all were ghastly in my eyes. A sense of duty and the wish to care duly for the bodies of our slain comrades kept me up to the work without murmur or any sense of repulsion. It was a serious training in the art of war, which made a deep impress on my future life.

Near our trenches was the body of a man, naked save for his trousers, who had been shot through the forehead as he came out of the river, after swimming across. Covered with mud and slime, blood oozing out of the wound, he lay on the river bank, head up and mouth open. As he was taken up for burial, one of the men said that he opened his lips, and so must be alive. A heartless man said, "Take him along with the others. He'll never get well." Mahoney cried out, "You d. . . . brute, I'd like to kill you! You must bury me before him." The unconscious man was carried back to the Maryland shore and sent to the hospital, where I was later told he fully recovered. I shuddered to think how near we had come to burying a man alive." Greely 1927: 40-41.

"Forty-seven bodies were buried upon the battle-field, twelve were brought over to Harrison's Island, and almost twenty were left for the enemy to bury." Story of the Fifteenth pg 95.

"When I got upon the island they commenced with him, and while they were extracting the bullets from his thigh, he said: ' Chaplain, will you find my wallet and put those bullets in? I shall want them some time.' From that time throughout he has been bright, cheerful and hopeful." Story of the Fifteenth pg 104.

"October 17, Lieutenant Derby writes: " We are fortifying the island and are to have reënforcements and hold it in case of attack . I was up till three o'clock this morning overseeing the throwing up of intrenchments. The ruins of the old stone barn make a good fort."" Story of the Fifteenth pg 60.

"Arriving at the island, we found that the firing we had heard was no boys' play. Quite a number of Company H's men lay wounded in the only house there was. It was then and there that we first witnessed the horrors of war.

Leaving our blankets and overcoats in the ruins of an old barn, we embarked, or rather my company crowded itself on to the only boat there was for conveying us to the Virginia shore." Story of the Fifteenth pg 77.

---

“As it became dark, the wounded were crowded together in and about the two farm houses, which were used as hospitals. “No light had been provided or could be found until Surgeon Haven discovered two inches of candle in an old bottle, by the light of which Lieutenant-Colonel Ward’s limb was amputated.” “It was a sad sight to see a brave officer in that position.” More candles were afterwards found in a closet. Surgeon Bates, who rose for this work from a sick bed to which he had been confined for several weeks, attended to the wounded on the Maryland shore. Surgeon Haywood of the Twentieth Massachusetts was with Assistant-Surgeon Haven on the island. Chaplain Scandlin was also very devoted in his attentions to the wounded and dying. The transportation of the wounded to the Maryland shore was continued until the noon of Tuesday, October 22.” Story of the Fifteenth pg 93-94.

“We struck a barn-yard. Long ricks of straw and hay were on our right, under which men, horses, cannon, and provisions were crowded for shelter, and as we got on a little farther, an extraordinarily high hedge, around a queer barn, commenced in grand style of hewn stone but never completed, being a central octagon of fifty feet diameter, and two wings, one from the south face and one from the east, and full of soldiers eating raw pork and hard bread, and belonging to Hincks's regiment (Nineteenth Massachusetts).

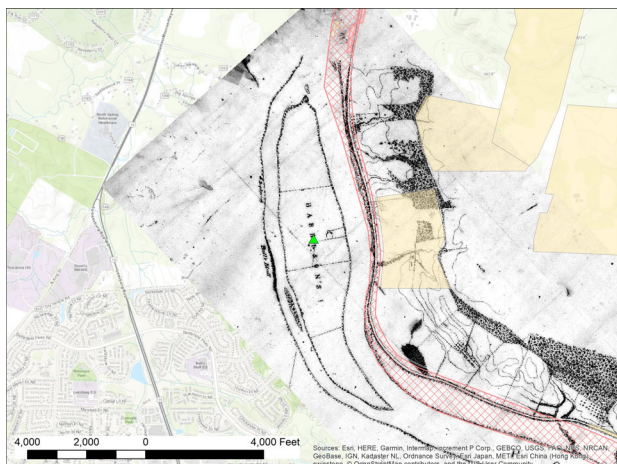
Hamilton, William R. "Ball's Bluff: From the Diary of the Late Major L.H.D. Crane, Third Wisconsin Volunteers," The United Service. A Monthly Review of Military and Naval Affairs, n.s. vol. 17 (January 1897). Pg 15

The farm - house had been used by the surgeons, and the larger room upon the lower floor I found completely covered with blood, and in one corner, feet, hands, and arms were piled like pig's feet in a butcher's shop, while in an old shabby building adjoining (the inevitable “ old house ” which the people here never tear down or burn up but leave to use for a wood-shed, or granary, or to bacco-house, or nigger-quarters, until it passes fitness for any earthly use and then suffer it to lie and rot in its place) lay the bodies of the men who had been operated on and died on the island. Out in the rain, close by were also several dead bodies, and all —ex necessitate—naked. The men were digging a trench to bury them in one corner of the yard, under a large chestnut tree, as we came away.

Hamilton, William R. "Ball's Bluff: From the Diary of the Late Major L.H.D. Crane, Third Wisconsin Volunteers," The United Service. A Monthly Review of Military and Naval Affairs, n.s. vol. 17 (January 1897). Pg 16

NB: a building shape matching the barn description above is on an 1865 map.

Images:



Civil War Era Map of Harrison's Island, approximate location of possible burials shown as a green triangle

Date 04/08/2022

Photographer Brian Crane

---

<u>MARKER ID</u>	<u>GIVEN NAME</u>	<u>FAMILY NAME</u>	<u>DEATH YEAR</u>
------------------	-------------------	--------------------	-------------------





Montgomery County Planning Department  
The Maryland-National Capital Park and Planning Commission

## Montgomery County Burial Sites Inventory

---

Historic Preservation ID:

HP-349

Name:

Summers Family Cemetery

Description:

Small 19th-century rural family cemetery.

---

Community:

☐

Religious:

☐

Family:

☒

African American:

☐

Other Site Type:

Number of Burials:

unknown

Visible Markers:

☐

Formal Entrance:

☐

Cemetery Sign:

☐

Active:

☐

Earliest Year:

Latest Year:

1848

Is the Site Extant?:

Is the Location Sensitive?:

☐

Sensitive Contact:

Sensitive Reason:

Location Confidence:

Approximate

Location Confirmed:

**Volunteer Forms and External Web Links (Montgomery Planning is not responsible for content.  
Links provided for informational purposes only)**

2006 Survey Summary:

Montgomery Preservation, Inc.:

FindaGrave.com:

Maryland Tombstone Transcription Project:

Other Website:

<https://mht.maryland.gov/secure/Medusa/PDF/Montgomery/M%3B%2011-1.pdf>

Master Plan Historic Resource No.:

Historic Resource:

Confirmed by Planning Board:

Confirmation Date:

Site Survey Date:

Revision Date:

No

Site Surveyor Name:

Data Originator:

Notes:

Family cemetery reserved in 1848 deed (Liber STS 3, Folio 376)

### Technical information about the locational information shown in the online map.

Public Display Scale:

Is there a Restriction on Sharing Information?:

1: 0

GIS Source Date:

GIS Source Datum:

Boundary Type:

Horizontal Accuracy:

GIS Data Source:

Additional Information:

Maryland Inventory of Historic Places Form 11-1 reads: "Paul Summers owned the property for 41 years, from 1807 to 1848. Paul Summers may well have built a house here. His family had a cemetery on a half-acre lot on the road for which they retained ownership after they sold the land."

The 1848 deed (Liber STS 3, Folio 376) reads: "except the Graveyard and a half acre of land to front on and with the quaker or ridge road to run with the South West side of the orchard so as to include the aforesaid Graveyard."

Images:



1951 Aerial photograph with 1848 Summers property line in red, and possible cemetery location as a green triangle.

Date 04/12/2022

Photographer Brian Crane

HP-349-01

---

<u>MARKER ID</u>	<u>GIVEN NAME</u>	<u>FAMILY NAME</u>	<u>DEATH YEAR</u>
------------------	-------------------	--------------------	-------------------



Montgomery County Planning Department  
The Maryland-National Capital Park and Planning Commission

## Montgomery County Burial Sites Inventory

---

Historic Preservation ID:

HP-350

Name:

Gibson Grove A.M.E. Zion Church Cemetery

Description:

Church burial ground.

---

Community:

☐

Religious:

☒

Family:

☐

African American:

☒

Other Site Type:

Number of Burials:

4

Visible Markers:

☐

Formal Entrance:

☐

Cemetery Sign:

☐

Active:

☐

Earliest Year:

Latest Year:

Is the Site Extant?:

Is the Location Sensitive?:

☐

Sensitive Contact:

Sensitive Reason:

Location Confidence:

Known

Location Confirmed:

**Volunteer Forms and External Web Links (Montgomery Planning is not responsible for content.  
Links provided for informational purposes only)**

2006 Survey Summary:

Montgomery Preservation, Inc.:

FindaGrave.com:

Maryland Tombstone Transcription Project:

Other Website:

<https://mht.maryland.gov/secure/Medusa/PDF/Montgomery/M%3B%2029-39.pdf>

Master Plan Historic Resource No.:

Historic Resource:

Confirmed by Planning Board:

Confirmation Date:

Site Survey Date:

Revision Date:

07/09/2021

Site Surveyor Name:

Tim Horsely

Data Originator:

Notes:

Ground Penetrating Radar investigations in July 2021 found 1 probable and 3 possible graves near the church building.

**Technical information about the locational information shown in the online map.**

Public Display Scale:

Is there a Restriction on Sharing Information?:

1: 0

GIS Source Date:

GIS Source Datum:

Boundary Type:

Horizontal Accuracy:

GIS Data Source:

Additional Information:

The church is a Montgomery County Master Plan Historic Site (29-39), and is eligible for the National Register of Historic Places. The church was formally established in 1898 following a period of time where there were church circuit visits to the community.

Images:

Photographer

Date

---

<u>MARKER ID</u>	<u>GIVEN NAME</u>	<u>FAMILY NAME</u>	<u>DEATH YEAR</u>
------------------	-------------------	--------------------	-------------------





Montgomery County Planning Department  
The Maryland-National Capital Park and Planning Commission

## Montgomery County Burial Sites Inventory

---

Historic Preservation ID:

HP-351

Name:

Marlow House/Duvall Family Cemetery

Description:

Small 19th-century rural family cemetery.

---

Community:

☐

Religious:

☐

Family:

☒

African American:

☐

Other Site Type:

Number of Burials:

Unknown

Visible Markers:

☐

Formal Entrance:

☐

Cemetery Sign:

☐

Active:

☐

Earliest Year:

Latest Year:

1865

Is the Site Extant?:

Is the Location Sensitive?:

☐

Sensitive Contact:

Sensitive Reason:

Location Confidence:

Approximate

Location Confirmed:

**Volunteer Forms and External Web Links (Montgomery Planning is not responsible for content.  
Links provided for informational purposes only)**

2006 Survey Summary:

Montgomery Preservation, Inc.:

FindaGrave.com:

Maryland Tombstone Transcription Project:

Other Website:

<https://mht.maryland.gov/secure/Medusa/PDF/Montgomery/M%3B%2034-8.pdf>

Master Plan Historic Resource No.:

Historic Resource:

Confirmed by Planning Board:

Confirmation Date:

Site Survey Date:

Revision Date:

Site Surveyor Name:

Data Originator:

Notes:

---

Referenced in an 1865 deed reservation.

**Technical information about the locational information shown in the online map.**

Public Display Scale:

Is there a Restriction on Sharing Information?:

1: 0

GIS Source Date:

GIS Source Datum:

Boundary Type:

Horizontal Accuracy:

GIS Data Source:

Additional Information:

---

1865 deed from Washington and Ann Duvall to Julius Marlow states: "excepting and reserving the family grave yard." Liber EBP 2 Folio 10.

Images:

---

Date

Photographer

---

<u>MARKER ID</u>	<u>GIVEN NAME</u>	<u>FAMILY NAME</u>	<u>DEATH YEAR</u>
------------------	-------------------	--------------------	-------------------



Montgomery County Planning Department  
The Maryland-National Capital Park and Planning Commission

## Montgomery County Burial Sites Inventory

---

Historic Preservation ID:

HP-352

Name:

Dunlop Family Cemetery Original Location

Description:

Small 19th-century rural family cemetery.

---

Community:

☐

Religious:

☐

Family:

☒

African American:

☐

Other Site Type:

Number of Burials:

Unknown

Visible Markers:

☐

Formal Entrance:

☐

Cemetery Sign:

☐

Active:

☐

Earliest Year:

Latest Year:

Is the Site Extant?:

Is the Location Sensitive?:

☐

Sensitive Contact:

Sensitive Reason:

Location Confidence:

Known

Location Confirmed:

**Volunteer Forms and External Web Links (Montgomery Planning is not responsible for content.  
Links provided for informational purposes only)**

2006 Survey Summary:

Montgomery Preservation, Inc.:

FindaGrave.com:

Maryland Tombstone Transcription Project:

Other Website:

<https://mht.maryland.gov/secure/Medusa/PDF/Montgomery/M%3B%2035-10.pdf>

Master Plan Historic Resource No.:

Historic Resource:

Confirmed by Planning Board:

Confirmation Date:

Site Survey Date:

Revision Date:

No

Site Surveyor Name:

Data Originator:

Notes:

---

Referenced with specific metes and bounds in an 1890 deed reservation.

### **Technical information about the locational information shown in the online map.**

Public Display Scale:

Is there a Restriction on Sharing Information?:

1: 0

GIS Source Date:

GIS Source Datum:

Boundary Type:

Horizontal Accuracy:

GIS Data Source:

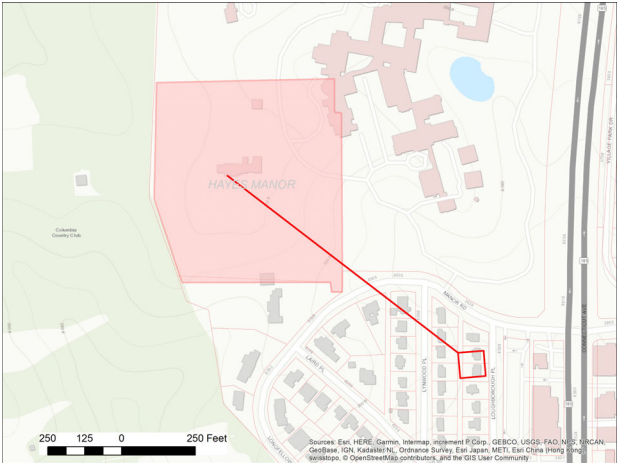
Additional Information:

---

1890 deed from William and Anna Laird to William Stewart states: "excepting and reserving out of the above described property part-thereof used as a cemetery and described as follows: Beginning at the north-west corner of said cemetery, said corner being distant nine hundred and eight-five (985) feet from the south-west corner of the old mansion on a course south fifty-two (52) degrees thirty (30) minutes east and running thence north eight-five (85) degrees fifteen (15) minutes east eighty-six and five-tenths (86.5) feet, thence south four (4) degrees forty-five (45) minutes east eighty-six (86) feet; thence south eighty-five (85) degrees fifteen (15) minutes west eighty-six and five-tenths (86.5) feet thence north four (4) degrees forty-five (45) minutes west eighty-six (86) feet to the place of beginning, containing seventeen hundred and twelve ten-thousandths (.1712) of an acre." Liber JA 19 Folio 160-162

Maryland Inventory of Historic Places Form 35-10 includes a lengthy excerpt from a 1954 Maryland Historical Magazine piece entitled "Hayes, a Montgomery County House." A footnote in the article reads: "An old family burial ground had been established, date unknown. several hundred yards southeast of the house, and in 1926, in an exchange of land with the Chevy Chase Land Co. to correct and straighten boundaries, all the remains that could be found were removed and re-interred in a common grave under the monument at its present site. It is probable that Alexander Williamson established this graveyard and reserved a corner for his slaves-and many slave remains were exhumed after the family remains were moved."

Images:



HP-352-01

1890 Cemetery reservation metes and bounds

Date 04/12/2022

Photographer Brian Crane

---

<u>MARKER ID</u>	<u>GIVEN NAME</u>	<u>FAMILY NAME</u>	<u>DEATH YEAR</u>
------------------	-------------------	--------------------	-------------------



---

**ATTACHMENT B: CORRESPONDENCE RELATED TO INVENTORY CHANGES**

---

May 10, 2022

Dr. Brian Crane  
Archaeology Planner Coordinator  
Historic Preservation  
Maryland-National Capital Park and Planning Commission  
2425 Reedie Drive, 3<sup>rd</sup> Floor  
Wheaton, MD, 20902

Dear Dr. Crane:

Thank you for providing information about the recent updates to the Montgomery County Burial Sites Inventory, and about the possible Conway-Jackson cemetery, Summers family cemetery, and the columbarium located on private property at or near Merry-Go-Round-Farm.

Our cultural resources section has reviewed the research materials and location information you provided about the two burial sites that will be mapped within MDOT SHA right-of-way on the publicly accessible Burial Sites Inventory Map. We appreciate that the inventory records and mapping conventions indicate that locations are approximate and that the exact locations and conditions of these possible burials are unknown; however, there is no information clearly identifying burials within MDOT SHA right-of-way, and providing a mapped location within MDOT SHA right-of-way, even with caveats about the confidence and precision of the documentation, is misleading.

In the case of the burials in the vicinity of Fairland along US 29, which may include the burials of Emma Jackson and Griffin Conway, the only indication that these burials might have been within MDOT SHA right-of-way is a secondhand account of the recollections of an informant, Roy Miles, who refers to 100-150 burials on “the Randy Roby property.” MDOT SHA provided right-of-way plats and as-built construction plans (1955) that showed two Roby (or Robey) properties along this section of US 29, one belonging to Carl Robey and one to Alfred Robey. Deed research indicates that various members of the Robey family purchased and sold multiple properties in the Fairland area throughout the twentieth century; the Randy Roby property could therefore have been almost any property surrounding the intersections of US 29 with Briggs-Chaney Road and the ICC, depending on the timeframe of Roy Miles’ recollections (he did not specify a date range).

Deeds for the land parcels surrounding the intersections of US 29 and Briggs-Chaney Road and the ICC revealed no mention of any cemetery on any of the properties, and no burials are depicted on plats, although Roy Miles described numerous headstones marking these graves. We appreciate that African-American cemeteries are uniquely marginalized and vulnerable

resources, and that archival sources are frequently inadequate to identify them. Mr. Miles' recollection of a cemetery in this vicinity is therefore valuable, but it is not precise.

We agree that there is a possibility of a cemetery located within MDOT SHA right-of-way in this general vicinity, but the evidence provided does not unequivocally support the assumptions outlined in the documentation provided, and it does not provide an exact location.

For example, it is not clear why the Conway-Jackson cemetery is likely to have been in the orchard depicted on MDOT SHA as-built plans. Roy Miles mentions stones marking between 100 and 150 burials; no stones are depicted on the plans. Even assuming that the orchard and the cemetery are one and the same, only a small portion of the orchard was within MDOT SHA right-of-way; the majority was left intact adjacent to US 29, as shown in aerial imagery from 1957. The location with the highest potential for intact burials would therefore be the property currently owned by the Villa Del Sol Limited Partnership, underneath a parking lot for the Windsor Court and Tower Apartments at 13802 Castle Boulevard. However, given that Miles described the cemetery as "obliterated," and only one end of the orchard was destroyed during the construction of US 29, it is more likely that the cemetery was located elsewhere.

Since the burials described by Roy Miles could be anywhere in the vicinity of the US 29/Briggs-Chaney and US 29/ICC interchanges, we believe it would be more accurate to show a larger circle or polygon encompassing the surrounding properties, rather than constraining it to a single point on a map.

In the case of the Summers family cemetery, the evidence is similarly insufficient to determine the exact location of burials. The only mention of this cemetery is in an 1848 deed, which reads: "except the Graveyard and a half acre of land to front on and with the quaker or ridge road to run with the South West side of the orchard so as to include the aforesaid Graveyard" (Liber STS 3; folio 176). This places the graveyard near Ridge Road, but not necessarily adjacent to it, and there is no clear evidence of resources within MDOT SHA right-of-way. Rather than identifying this possible resource with a single point, we believe a larger polygon encompassing the former Summers property on either side of Ridge Road/MD 27 would more accurately reflect the data available, and would provide potential researchers with a better understanding of the area where burials may be present.

We appreciate the effort made by Montgomery County to research and map these important resources, and to provide this valuable research tool to the public. We respectfully request that you modify the online mapping to more accurately reflect the ambiguity of the historical record in consideration of the above comments, and to ensure that any potential impacts in these areas are cognizant of the sensitivities. Thank you for the opportunity to comment.

Sincerely,

Steve Archer  
Cultural Resources Team Leader  
Environmental Planning Division

Attachments

cc:     Rebecca Ballo, M-NCPPC  
          Julie Schablitsky, MDOT  
          Richard Ervin, MDOT SHA  
          Lisa Kraus, MDOT SHA